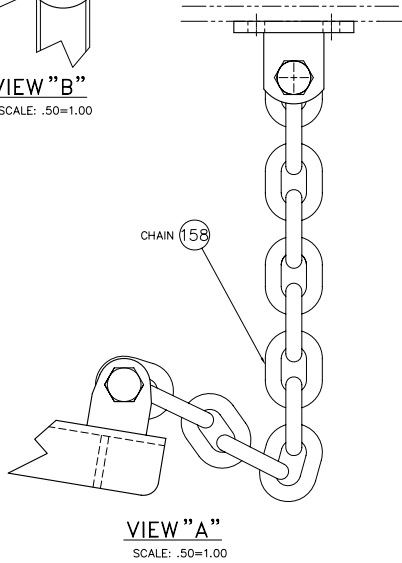
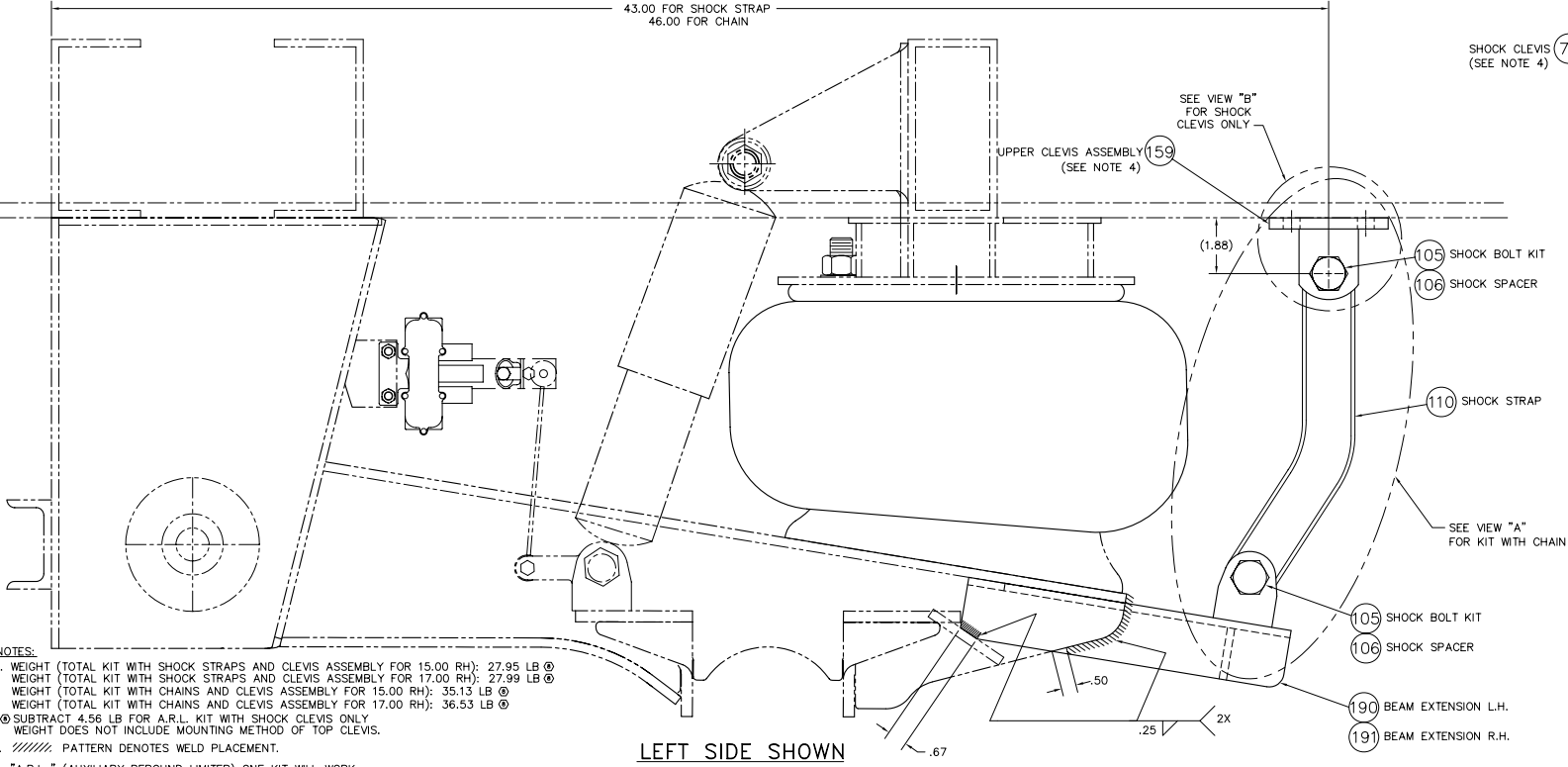
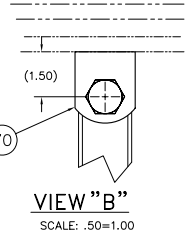
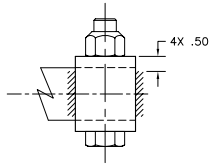
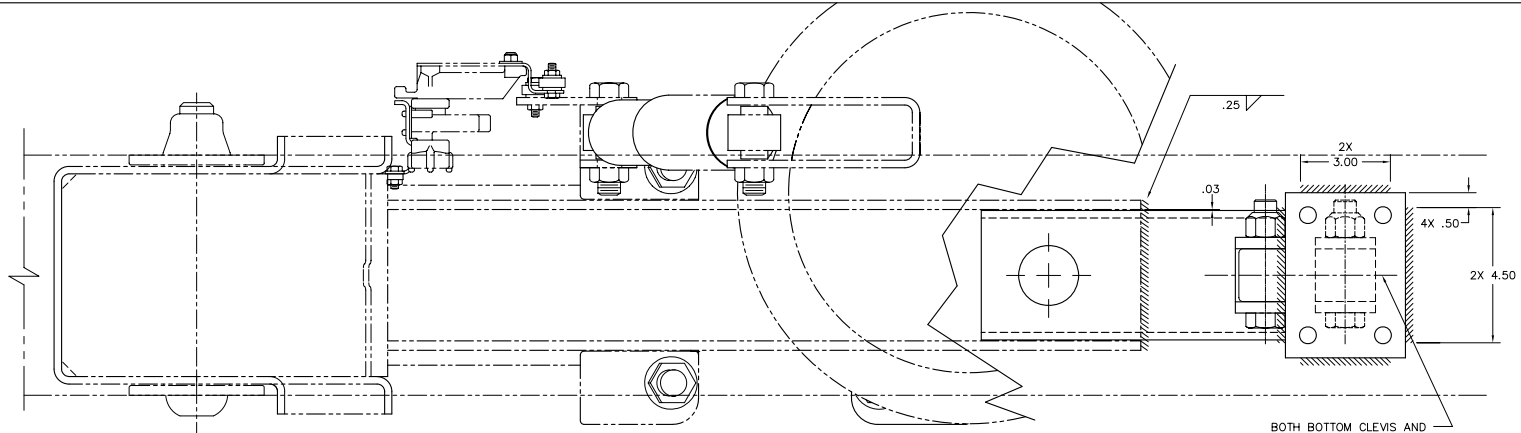


ITEM	DESCRIPTION	ARL
1-199	ARL KIT COMPONENTS	B-26594

BOLT TORQUE VALUES			
ITEM	DESCRIPTION	SIZE	TORQUE
105	SHOCK BOLT KIT	3/4-10	150 FT LB



- NOTES:**
- WEIGHT (TOTAL KIT WITH SHOCK STRAPS AND CLEVIS ASSEMBLY FOR 15.00 RH); 27.95 LB @  
WEIGHT (TOTAL KIT WITH SHOCK STRAPS AND CLEVIS ASSEMBLY FOR 17.00 RH); 27.99 LB @  
WEIGHT (TOTAL KIT WITH CHAINS AND CLEVIS ASSEMBLY FOR 15.00 RH); 35.13 LB @  
WEIGHT (TOTAL KIT WITH CHAINS AND CLEVIS ASSEMBLY FOR 17.00 RH); 36.53 LB @  
⊙ SUBTRACT 4.56 LB FOR A.R.L. KIT WITH SHOCK CLEVIS ONLY  
WEIGHT DOES NOT INCLUDE MOUNTING METHOD OF TOP CLEVIS.
  - ////// PATTERN DENOTES WELD PLACEMENT.
  - "A.R.L." (AUXILIARY REBOUND LIMITER) ONE KIT WILL WORK ON WELD-ON AND BOLT-ON SUSPENSIONS.
  - IT IS THE RESPONSIBILITY OF THE SUSPENSION INSTALLER AND THE VEHICLE DESIGNER TO PROVIDE BOTH ADEQUATE VEHICLE FRAME DESIGN AND PROPER SECUREMENT METHOD FOR THE A.R.L. UPPER SHOCK CLEVIS (ITEM 3).
  - BALLOONED NUMBERS FOR HENDRICKSON INTERNAL USE ONLY.

This Print remains the property of Hendrickson. All information contained thereon is confidential. It is loaned, subject to return on demand and on express condition that it is not to be copied or used directly or indirectly for any purpose other than the purpose for which it has been loaned to you.

<b>HENDRICKSON</b> Trailer Suspension Systems <small>3700 HERRINGTON PLACE SE. CANTON, OH 44705-1000 USA</small>	<small>UNLESS OTHERWISE NOTED:</small> TOLERANCES ARE: DIMENSIONS IN INCHES: FRACTIONS DECIMALS .005 ± .005 .010 ± .010 .015 ± .010 .020 ± .010 .030 ± .010 .040 ± .010 .050 ± .010 .060 ± .010 .070 ± .010 .080 ± .010 .090 ± .010 .100 ± .010 .125 ± .010 .150 ± .010 .175 ± .010 .200 ± .010 .250 ± .010 .300 ± .010 .375 ± .010 .450 ± .010 .500 ± .010 .625 ± .010 .750 ± .010 .875 ± .010 1.000 ± .010 1.250 ± .010 1.500 ± .010 1.750 ± .010 2.000 ± .010 2.500 ± .010 3.000 ± .010 3.750 ± .010 4.500 ± .010 5.000 ± .010 6.000 ± .010 7.000 ± .010 8.000 ± .010 9.000 ± .010 10.000 ± .010 ANGULAR: ± .05° 1.000 ± .010 1.500 ± .010 2.000 ± .010 2.500 ± .010 3.000 ± .010 3.750 ± .010 4.500 ± .010 5.000 ± .010 6.000 ± .010 7.000 ± .010 8.000 ± .010 9.000 ± .010 10.000 ± .010 DIMENSIONS AGREE TO AND 114.00-1140 (REV) CHN. NO. BY DATE	# 12060 7 12060 6 10874 3 10708	#101 04-12-02 1-2-03 7-24-07 8-28-07	DRAWN BY: H. DAUGHERTY CHECK BY: J. SULKOSKI APPR BY: N. MYERS	8-17-98 THE DESIGN IS THE CONFIDENTIAL PROPERTY OF HENDRICKSON	HT300 ARL KIT CLEVIS & FLAT BRACKET	SCALE: .50=1.00 SHEET NO. D PAGE 1 OF 1	D-24171
--	--	--	--	--	---	--	---	---------