

# **H** PARTS LIST

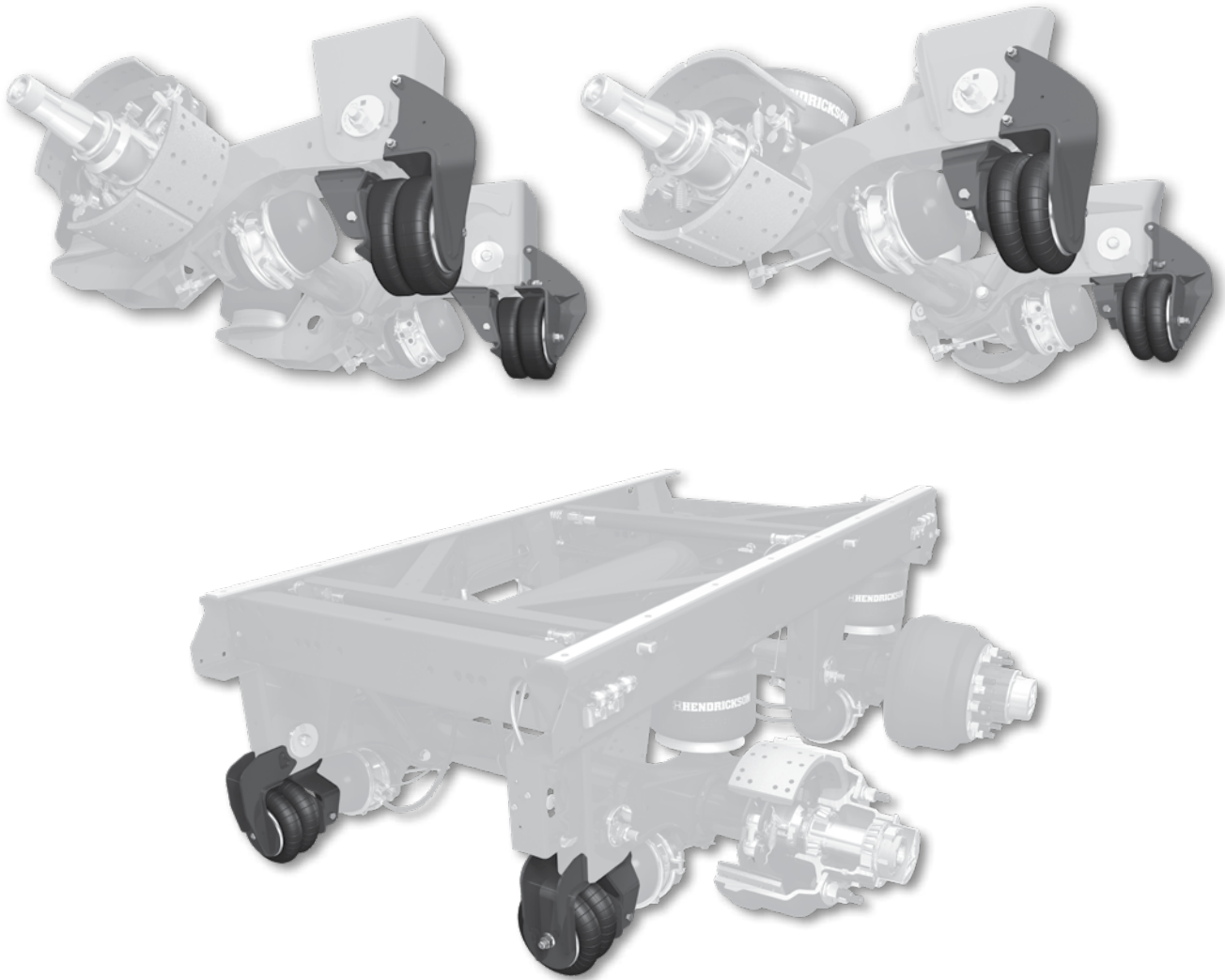
## UBL™ UNDER BEAM LIFT™

LIT NO: L757

DATE: June 2019

REVISION: H

---

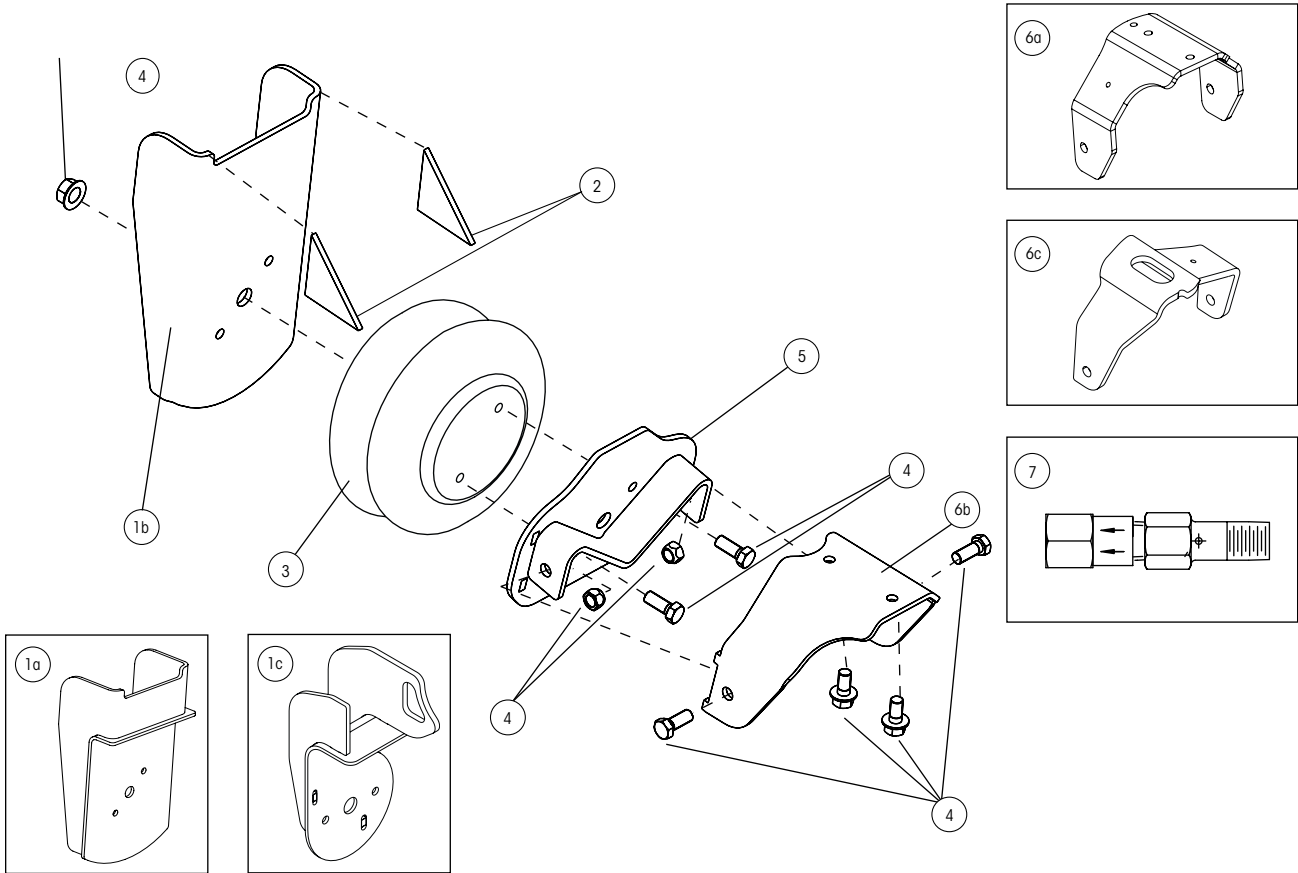




**OEM-INSTALLED UBL**

**UBL - 001, UBL - 002, UBL - 003, UBL - 004 (Weld-on)**

- INTRAAX AAT
- INTRAAX AAL 23/25K
- INTRAAX AAEDT 30K
- INTRAAX AANT
- HT SERIES HT230/300
- HT SERIES HT250T



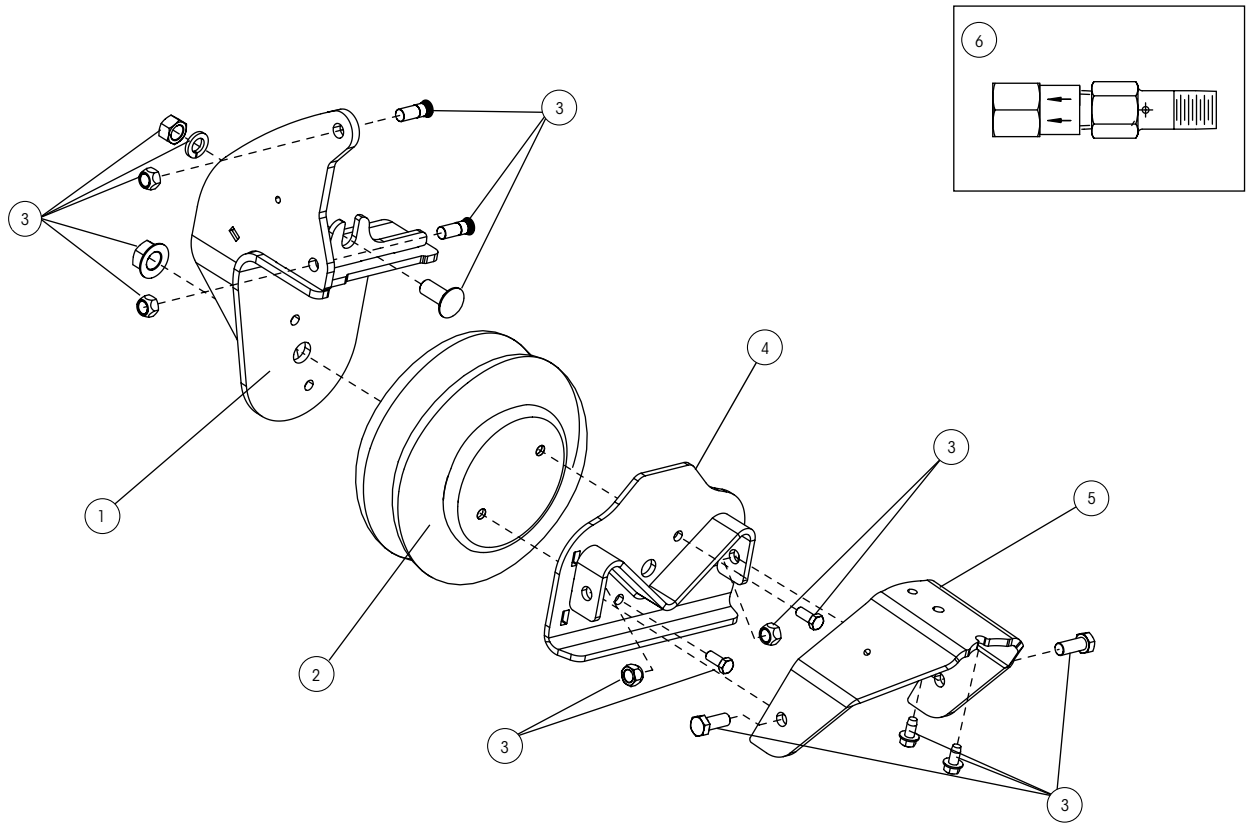
ITEM	DESCRIPTION	PART NO.	QTY.	NOTES
<b>1</b>	<b>FRAME BRACKET LIFT SUPPORT</b>			
	1a UBL-001	D-23301C	2	AAT, HT230 and HT300 models; Std. painted
	1b UBL-002, UBL-003	D-24658C	2	AAL, AAEDT, AAEDL and HT250T models; Std. painted
	1c UBL-004	C-28610-1C/-2C	2	AANT models only; Std. painted
<b>2</b>	<b>GUSSET</b>	S-2901-37	4	Not for use with UBL-004
<b>3</b>	<b>AIR SPRING</b>	S-23114	2	
<b>4</b>	<b>LIFT ASSEMBLY BOLT KIT</b>	S-24614/2	2	Includes (2) 1/2" bolts, (2) 3/8" bolts, (2) self-tapping screws, (2) prevailing torque hex nuts and (1) Spirallock® hex nut
<b>5</b>	<b>LIFT SPRING PLATE ASSEMBLY</b>			
	UBL-001, UBL-002, UBL-003	S-27945	2	All models except AANT / AANL
	UBL-004	C-28614	2	AANT models only
<b>6</b>	<b>LIFT BRACKET</b>			
	6a UBL-001	C-23299C	2	HT230 and HT300 models; Std. painted
	6b UBL-002, UBL-003	S-28537C	2	HT250T models only; Std. painted
	6c UBL-004	C-28617-1/-2	1	AANT models only
<b>7</b>	<b>CROSSOVER VALVE</b>			
	UBL-003	VS-27214	1	AAL 30K, AAEDL 30K and HT250T models only



# OEM-INSTALLED UBL

UBL - 101 / 102, 201 / 202, UBL - 301 / 302 (Bolt-on)

- INTRAAX AAL
- INTRAAX AAT
- INTRAAX AAEDT
- INTRAAX AAEDL
- VANTRAAX HKAT
- VANTRAAX HKAL
- VANTRAAX HKARL



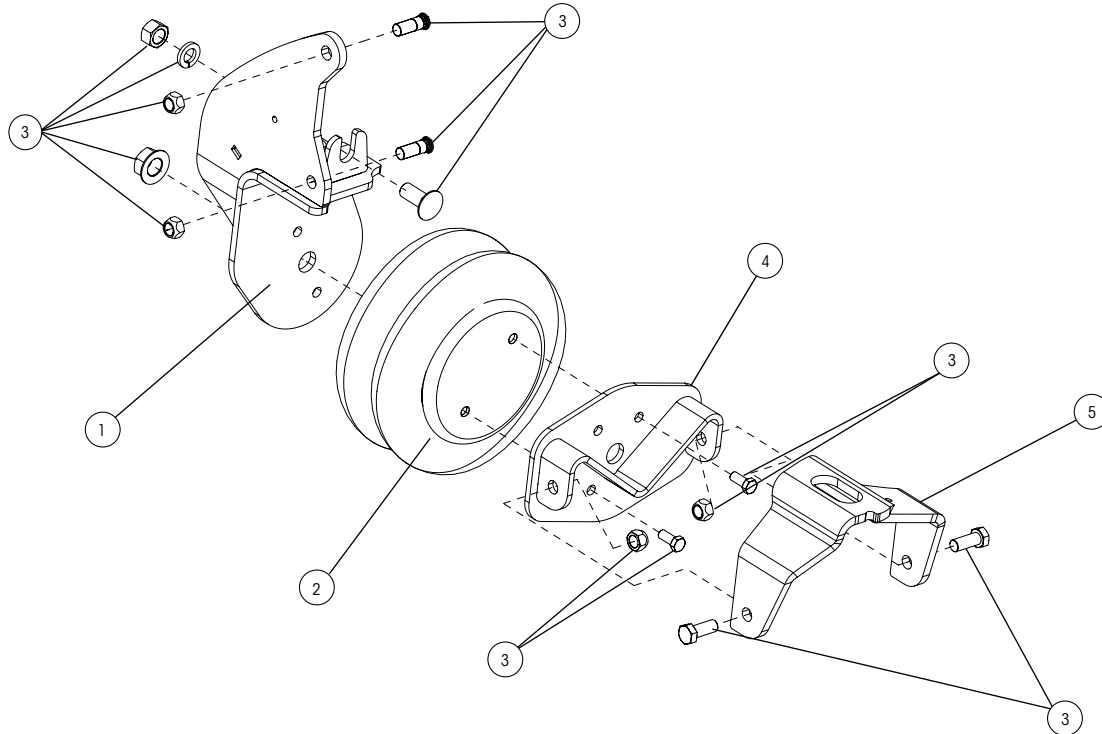
ITEM	DESCRIPTION	PART NO.	QTY.	NOTES
1	<b>FRAME BRACKET LIFT SUPPORT</b>			
	UBL-101, UBL-201, UBL-301	C-33350-1C/-2C	2	Std. painted
	UBL-102, UBL-202, UBL-302	C-33350-1GV/-2GV	2	Galvanized
2	<b>AIR SPRING</b>	S-23114	2	
3	<b>LIFT ASSEMBLY BOLT KIT</b>	S-30634-1/-2	2	Includes (2) 1/2" bolts, (2) 3/8" bolts, (1) carriage bolt, (2) 1/2" round head ribbed neck bolts, (2) self-tapping screws, (4) prevailing torque hex nuts, (1) 1/2" hex nut, (1) 5/8" hex nut, (1) lock washer and (1) Spirallock® hex nut
4	<b>LIFT SPRING PLATE ASSEMBLY</b>	S-27945	2	
5	<b>LIFT BRACKET</b>			
	AAT only	C-32893C	2	Std. painted
	AAL, AAEDL and AAEDT only	C-32041C	2	Std. painted
6	<b>CROSSOVER VALVE</b>			
	UBL-301, UBL-302	VS-27214	1	AAL 30K, AAEDL 30K and HT250T models only



**OEM-INSTALLED UBL**

**UBL - 401 / 402 (Bolt-on)**

- **INTRAAX AANT 23K**
- **VANTRAAX HKANT 69K23 (units built before Oct. 2016)**
- **VANTRAAX HKANT 46K (units built before Oct. 2016)**
- **VANTRAAX HKANT 40K (units built before Oct. 2016)**



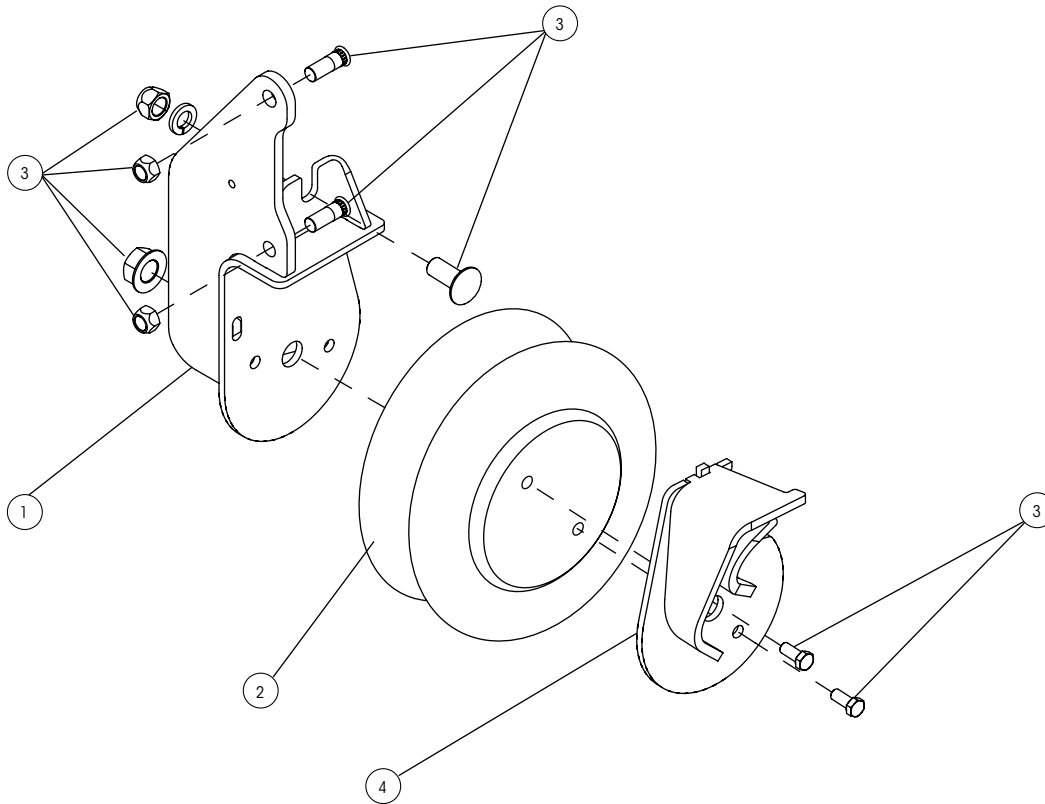
ITEM	DESCRIPTION	PART NO.	QTY.	NOTES
1	<b>FRAME BRACKET LIFT SUPPORT</b>			
	UBL-401	C-32038-1C/-2C	1	Std. painted
	UBL-402	C-32038-1GV/-2GV	1	Galvanized
2	<b>AIR SPRING</b>	S-23114	2	
3	<b>LIFT ASSEMBLY BOLT KIT</b>	S-30634-1/-2	2	Includes (2) 1/2" bolts, (2) 3/8" bolts, (1) carriage bolt, (2) 1/2" round head ribbed neck bolts, (2) self-tapping screws, (4) prevailing torque hex nuts, (1) 1/2" hex nut, (1) 5/8" hex nut, (1) lock washer and (1) Spirallock® hex nut
4	<b>LIFT SPRING PLATE ASSEMBLY</b>	C-28614	2	
5	<b>LIFT BRACKET</b>	C-28617-1/-2	1	



# OEM-INSTALLED UBL

## UBL - 005, UBL-005GV (Bolt-on)

- INTRAAX AANL 23K
- VANTRAAX HKANL



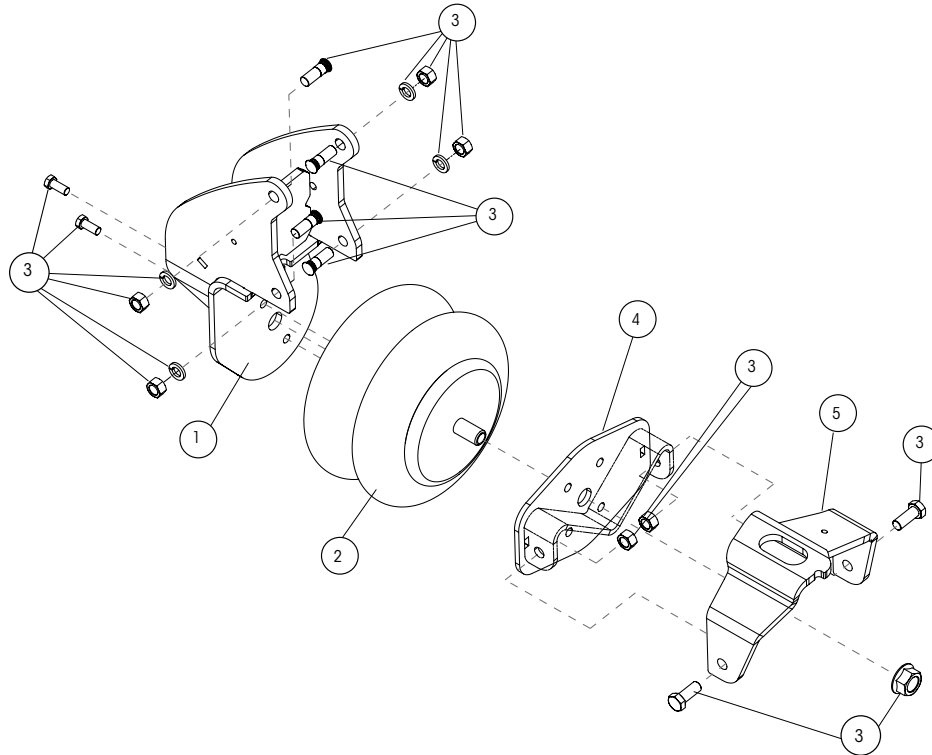
ITEM	DESCRIPTION	PART NO.	QTY.	NOTES
1	<b>FRAME BRACKET LIFT SUPPORT</b>			
	UBL-005	C-30293-1C/-2C	2	Std. painted
	UBL-005GV	C-30293-1GV/-2GV	2	Galvanized
2	<b>AIR SPRING</b>	S-23114	2	
3	<b>LIFT ASSEMBLY BOLT KIT</b>	S-30634-1/-2	2	Includes (2) 1/2" bolts, (2) 3/8" bolts, (1) carriage bolt, (2) 1/2" round head ribbed neck bolts, (2) self-tapping screws, (4) prevailing torque hex nuts, (1) 1/2" hex nut, (1) 5/8" hex nut, (1) lock washer and (1) Spirallock® hex nut
4	<b>LIFT BRACKET</b>	C-30209-1/-2	1	



## HENDRICKSON-INSTALLED UBL

### UBL - 601 (Bolt-on)

- VANTRAAK HKANT 69K23 (units built after Oct. 2016)
- VANTRAAK HKANT 46K (units built after Oct. 2016)
- VANTRAAK HKANT 40K (units built after Oct. 2016)



ITEM	DESCRIPTION	PART NO.	QTY	NOTE
1	FRAME BRACKET LIFT SUPPORT	UBL-601	1	Std. painted
		UBL-602	1	Galvanized
2	AIR SPRING	S-23114	2	
3	LIFT ASSEMBLY BOLT KIT	S-37955-1/2	2	Includes (1) 3/4" hex nut, (2) hex head bolts, (4) 1/2" round head ribbed neck bolts, (2) hex cap screws, (6) 1/2" hex nuts and (4) lock washers.
4	LIFT SPRING PLATE ASSEMBLY	C-28614	2	
5	LIFT BRACKET	C-28617-1/2	1	

**HENDRICKSON-INSTALLED UBL****SUGGESTED CONTROLS BILL OF MATERIALS CHART — WABCO ABS**

PART NUMBER	QUANTITY	VENDOR	DESCRIPTION	NOTES
<b>ABS Electronic Control Unit</b>				
400 500 105 0	1	WABCO	InfoLink ECU/Valve Assembly (2S/2M-4S/3M)	Trailer ABS ECU must be InfoLink equipped. Lift axle function must also be activated using Meritor WABCO TOOLBOX software. Reference WABCO TP-08103 Technical Bulletin for programming information.**
<b>OR</b>				
400 500 106 0	1	WABCO	InfoLink ECU/Valve Assembly (2S/1M)	
<b>Lift Axle Control Components</b>				
400 850 821 0	1	WABCO	Lift Axle Control Kit	Reference WABCO TP-08103 Technical Bulletin for installation information.
Kit includes:			463 084 050 0 Lift Axle Control Valve	
			449 518 030 0 3-meter Solenoid Valve Cable	
			449 442 010 0 Multiple Generic I/O Cable	
			449 428 030 0 12-volt Analog Input Cable	
			441 044 106 0 Pressure Sensor	
			TP-09174 Label	
<b>Parked Auto-Deploy Components (Required by Hendrickson)</b>				
8000	1	Sealco	Pressure Switch	The 449 428 030 0 cable included with the WABCO Lift Axle Control Option Kit allows the installation of a non-WABCO pressure switch. The pressure switch should be plumbed into the Emergency/Supply glad hand circuit.
<b>Service Brake Isolation Components</b>				
780215	2	Sealco	Free Wheel Control Valve	Reference Sealco's product documentation for plumbing schematics. The pilot circuit of the free wheel control valve should be plumbed to the lift bag circuit.
<b>Optional Components</b>				
Multiple	1	Peterson	Light	Peterson Manufacturing stocks a wide variety of light options. Alternatively, the light can be purchased from any trailer lighting supplier.
449 711 120 0	1	WABCO	12m Light Cable	

\*\* Customers who currently use Meritor WABCO 2S/1M ECU/valve that is non-InfoLink equipped can remove existing ECU and replace with a new InfoLink 2S/1M ECU only (part number S446 108 206 0). For all other non-2S/1M systems, the ECU and Valve assembly must be replaced.

**HENDRICKSON-INSTALLED UBL****SUGGESTED CONTROLS BILL OF MATERIALS CHART — BENDIX ABS**

OEM PART NUMBER	AFTERMARKET PART NUMBER	QUANTITY	VENDOR	DESCRIPTION	NOTES
<b>TABS-6 Advanced</b>					
K102325	K102326		Bendix	TABS-6 advanced Pigtail Harness	9" Power pigtail with 9" auxiliary 6-pin pigtail (all 6 pins included) with 9" 4-pin J1939 diagnostic connector
K099802	K099803	1	Bendix	Lift Axle Harness with Park Brake Override via Lift Lower (LL) Feature	6-pin DTM auxiliary connector to Lift Axle Control (LAC) solenoid 8 ft. with 2-pin AMP connector; Lift Lower (LL) override pigtail 5 ft with 2 pin DT connector
<b>Lift Axle Service Brake Override</b>					
109001	65476	1	Bendix	Relay Valve R12-P	Pivot relay valve; tank mounted
109424	65476	1	Bendix	Relay Valve R12-P	Pivot relay valve; bracket mounted (optional)
101450	101450N	1	Bendix	TR-3 Inversion Valve	
<b>Park Brake Disable</b>					
K101876	K101877	1	Bendix	Pressure Switch	Normally closed 60 PSI cut in; 40 PSI cut out
<b>Hendrickson Lift Axle</b>					
AKAD0012		1	Hendrickson	Lift Valve	
<b>Label</b>					
K101839	K101840	1	Bendix	Warning Label	Warning vehicle equipped with automatic lift axle control

Actual product performance may vary depending upon vehicle configuration, operation, service and other factors.

All applications must comply with applicable Hendrickson specifications and must be approved by the respective vehicle manufacturer with the vehicle in its original, as-built configuration. Contact Hendrickson for additional details regarding specifications, applications, capacities, and operation, service and maintenance instructions.

Call Hendrickson at **330.489.0045** or **866.RIDEAIR (743.3247)** for additional information.



[www.hendrickson-intl.com](http://www.hendrickson-intl.com)

**TRAILER COMMERCIAL VEHICLE SYSTEMS**  
2070 Industrial Place SE  
Canton, OH 44707-2641 USA  
866.RIDEAIR (743.3247)  
330.489.0045 • Fax 800.696.4416

**Hendrickson Canada**  
250 Chrysler Drive, Unit #3  
Brampton, ON Canada L6S 6B6  
800.668.5360  
905.789.1030 • Fax 905.789.1033

**Hendrickson Mexicana**  
Circuito El Marqués Sur #29  
Parque Industrial El Marqués  
Pob. El Colorado, Municipio El Marqués,  
Querétaro, México C.P. 76246  
+52 (442) 296.3600 • Fax +52 (442) 296.3601

L757 Rev H 06-19

© 2001–2019 Hendrickson USA, L.L.C. All Rights Reserved. All trademarks shown are owned by Hendrickson USA, L.L.C., or one of its affiliates, in one or more countries. Information contained in this literature was accurate at the time of publication. Product changes may have been made after the copyright date that are not reflected.

Printed in United States of America