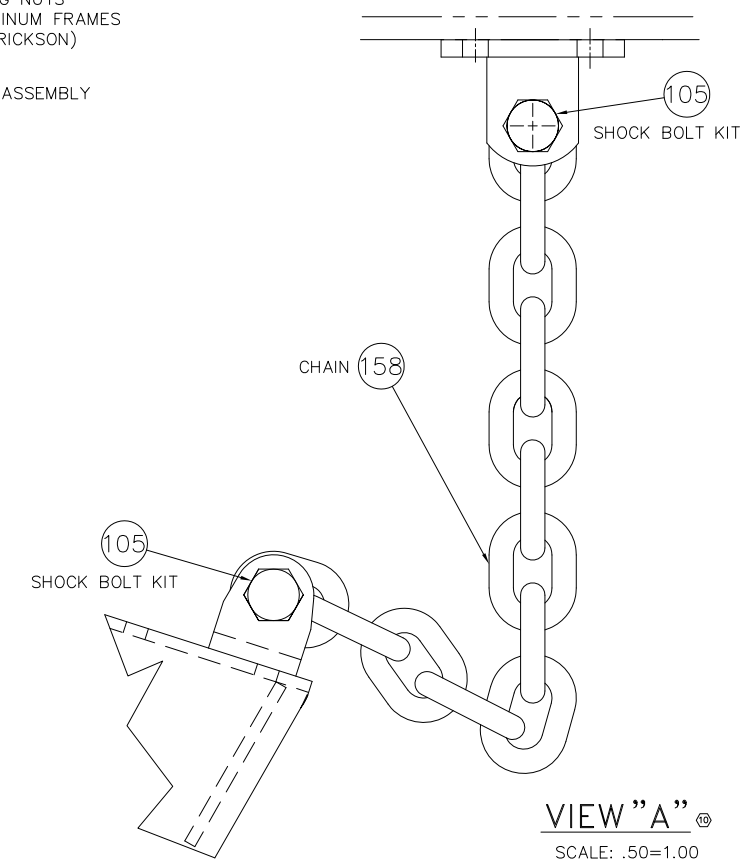
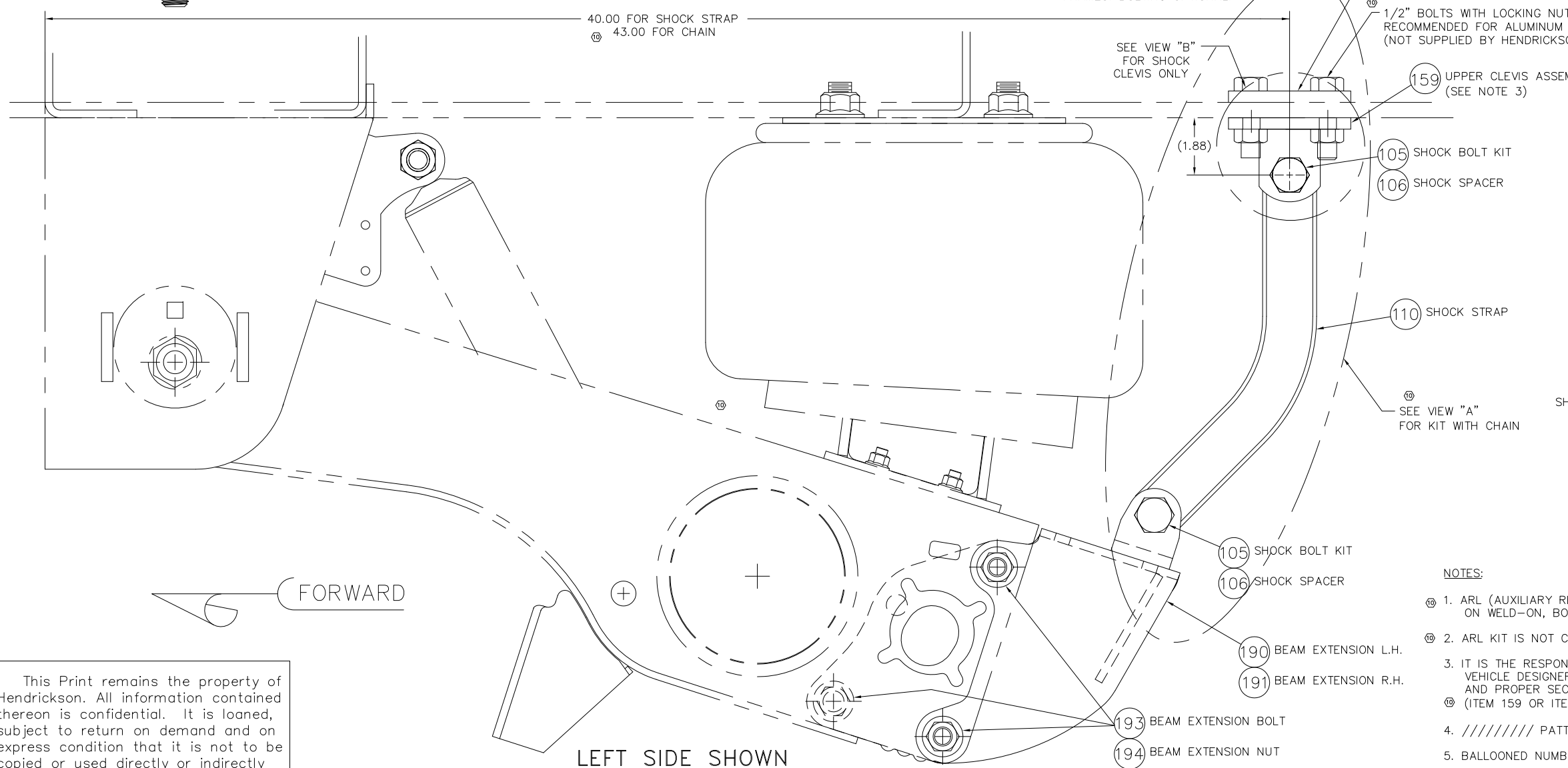
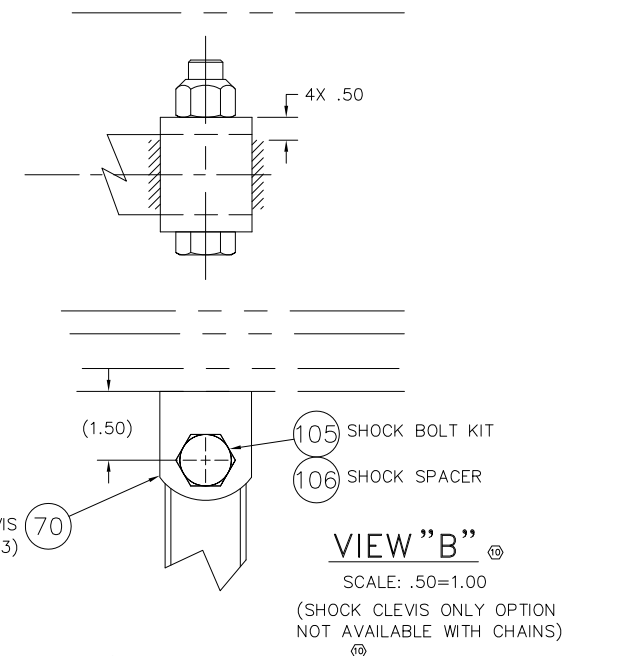
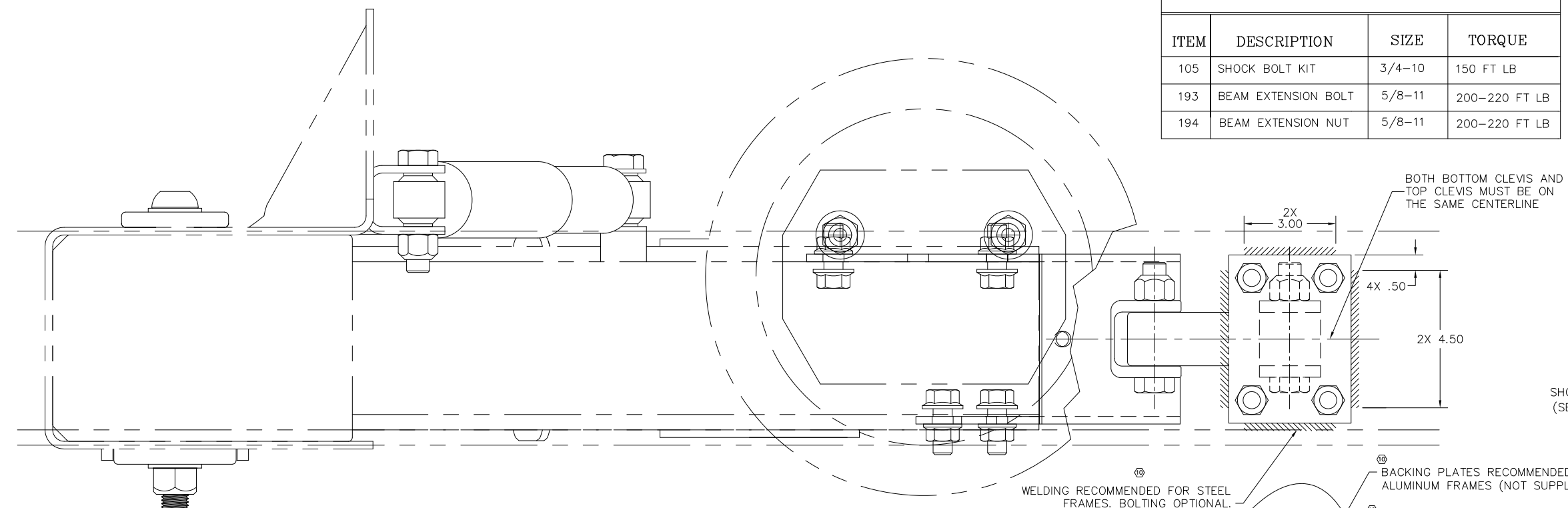


ITEM	DESCRIPTION	ARL
1-199	ARL KIT COMPONENTS	B-26594

BOLT TORQUE VALUES			
ITEM	DESCRIPTION	SIZE	TORQUE
105	SHOCK BOLT KIT	3/4-10	150 FT LB
193	BEAM EXTENSION BOLT	5/8-11	200-220 FT LB
194	BEAM EXTENSION NUT	5/8-11	200-220 FT LB



- NOTES:
- ARL (AUXILIARY REBOUND LIMITER) KIT WILL WORK ON WELD-ON, BOLT-ON, WING OR WINGLESS HANGER APPLICATIONS.
 - ARL KIT IS NOT COMPATIBLE WITH AIR DISC BRAKES.
 - IT IS THE RESPONSIBILITY OF THE SUSPENSION INSTALLER AND THE VEHICLE DESIGNER TO PROVIDE BOTH ADEQUATE VEHICLE FRAME DESIGN AND PROPER SECUREMENT METHOD FOR THE ARL UPPER SHOCK CLEVIS (ITEM 159 OR ITEM 70).
 - ////////// PATTERN DENOTES WELD PLACEMENT.
 - BALLOONED NUMBERS FOR HENDRICKSON INTERNAL USE ONLY.

This Print remains the property of Hendrickson. All information contained thereon is confidential. It is loaned, subject to return on demand and on express condition that it is not to be copied or used directly or indirectly for any purpose other than the purpose for which it has been loaned to you.

*DWG PART NUMBER REVISION MUST MATCH REVISION OF DOCUMENT

PART NO.	* REV
DWG D-241321	10

HENDRICKSON
TRAILER SUSPENSION SYSTEMS
2070 INDUSTRIAL PLACE S.E., CANTON, OH 44707-2800 U.S.A.

UNLESS OTHERWISE NOTED:	TOLERANCES ARE:	DIMENSIONS ARE:	INCHES
XX: ± .1	Ø: ± .006	XX: ± .030	ANGULAR: ± 0.5°

NO	ISSUED	CDP	6-5-20	DRAWN BY	5-28-98
9	18591	CDP	1/12/10	K. GALIGHER	
8	12060	CDP	1-15-03	J. SUKOSD	
7	10874	JAD	7-24-01	W. SCHNEIDER	

INTRAAAX® AAT
ARL KIT
CLEVIS & FLAT BRACKET

P
PRODUCTION
SCALE: .50=1.00
D
PAGE 1 OF 1
D-24132