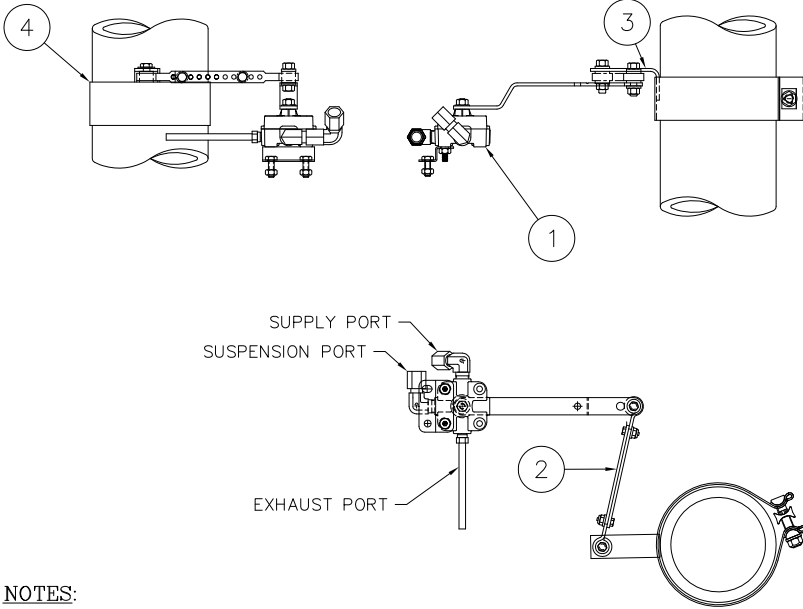


This Print remains the property of Hendrickson. All information contained thereon is confidential. It is loaned, subject to return on demand and on express condition that it is not to be copied or used directly or indirectly for any purpose other than the purpose for which it has been loaned to you.

LINK CHART	
RISE HEIGHT	LINK(INCHES)
6.50	3.50
7.50	3.50
9.00	3.50
10.00	3.50
11.00	6.25
12.00	6.25
14.00	5.50
15.00	6.25
16.00	9.25
17.00	10.00

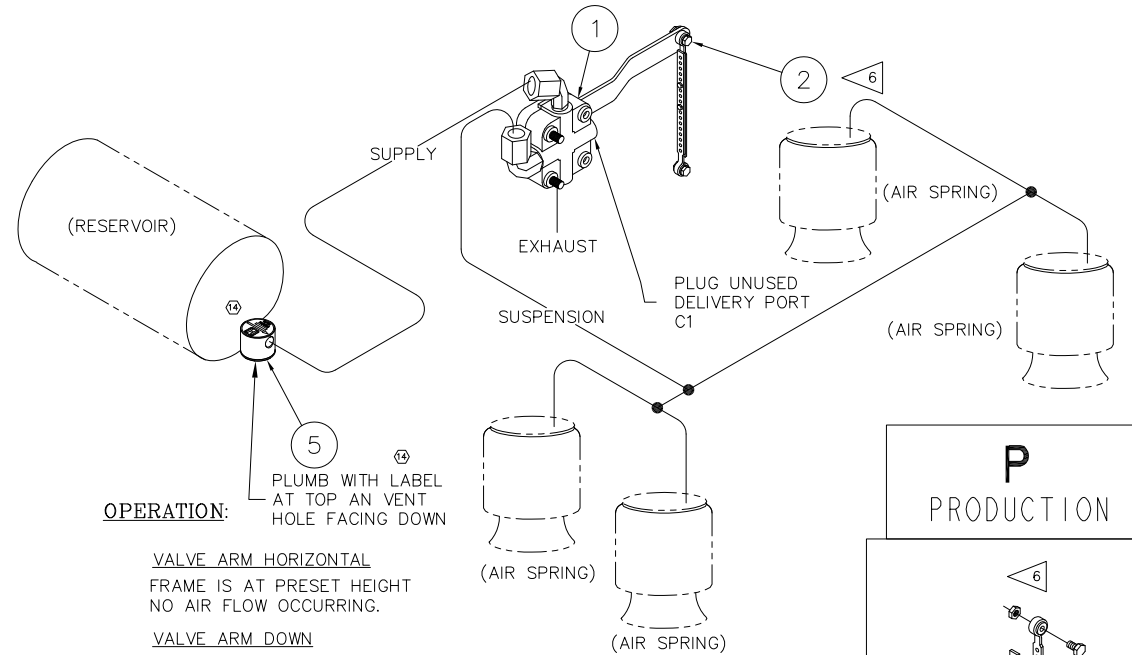


NOTES:

- DO NOT ADD LUBRICATION TO AIR SYSTEM.
- ALL CONNECTIONS MUST BE LEAK PROOF.
- AVOID BENDS IN AIR LINES.
- AIR LINE FITTINGS AND LINES TO BE FURNISHED BY INSTALLER. 3/8" O.D. POLYIMIDE TUBING RECOMMENDED.
- APPLICATION - ALL TRAILERS USING INTRAAX® AAL, AAEDL, AND AAEDT SUSPENSION MODELS.
- TRIM & BOLT LINKS TO SPECIFIED LENGTH IN LINK CHART.
- AIR UP SUSPENSION UNTIL AXLE IS SET AT PROPER RIDE HEIGHT. INSERT LOCATING PIN IN HCV CONTROL ARM TO HOLD ARM IN NEUTRAL POSITION. INSTALL ONE END OF THE LINK TO THE HEIGHT CONTROL VALVE. INSTALL BRACKET (ITEM 3) AND THE BAND CLAMP (ITEM 4) LOOSELY ON THE AXLE. ROTATE ITEMS 3 AND 4 TO LINE UP THE MOUNTING HOLE AND THE OTHER END OF THE LINK. INSTALL LINK FASTENER AND TIGHTEN NUT. DO NOT OVER-TIGHTEN LINK FASTENER TO ALLOW THE LINK TO ROTATE FREELY. TIGHTEN THE BAND CLAMP (ITEM 4) TO 50-60 FT-LB, BEING CAREFUL NOT TO CHANGE THE ORIENTATION OF ITEM 3.

BILL OF MATERIALS					
HCV WITHOUT DUMP			AKH-235B-3	AKH-235-3	
			REVISION	13	14
ITEM	PART NO.	DESCRIPTION	QTY.	QTY.	QTY.
1	A-28651	HCV - VALVE ONLY	1	1	1
2	A-14187	LINK ASSEMBLY - BOLTED	1	1	1
3	B-23293	HCV BRACKET	1	1	1
4	B-26593-1	CLAMP, BAND	1	1	1
5	B-38941	PRESSURE PROTECTION VALVE	-	1	1
*6	DWG C-24911	HIGH FLOW HCV KIT FOR INTRAAX® UNDERSLUNG	1	1	1
*7	L-668	INSTALLATION INSTRUCTIONS	1	1	1
*8	A-34959	HCV SUB-KIT (#8)	1	1	1
			WEIGHT:	2.32	2.49

* NOT SHOWN

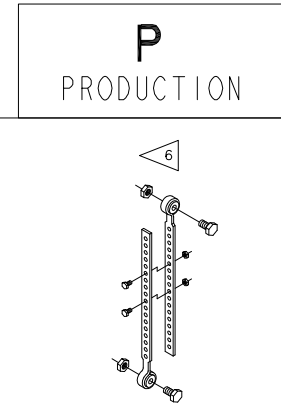


OPERATION:

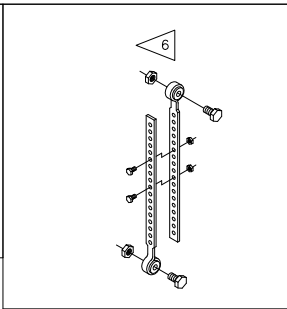
- VALVE ARM HORIZONTAL**
FRAME IS AT PRESET HEIGHT
NO AIR FLOW OCCURRING.
- VALVE ARM DOWN**
FRAME IS HIGH, AIR SPRINGS
ARE EXHAUSTED UNTIL ARM
IS HORIZONTAL.
- VALVE ARM UP**
FRAME IS LOW, AIR SPRINGS
ARE INFLATED UNTIL ARM
IS HORIZONTAL.

FUNCTION:

AUTOMATIC HEIGHT CONTROL.

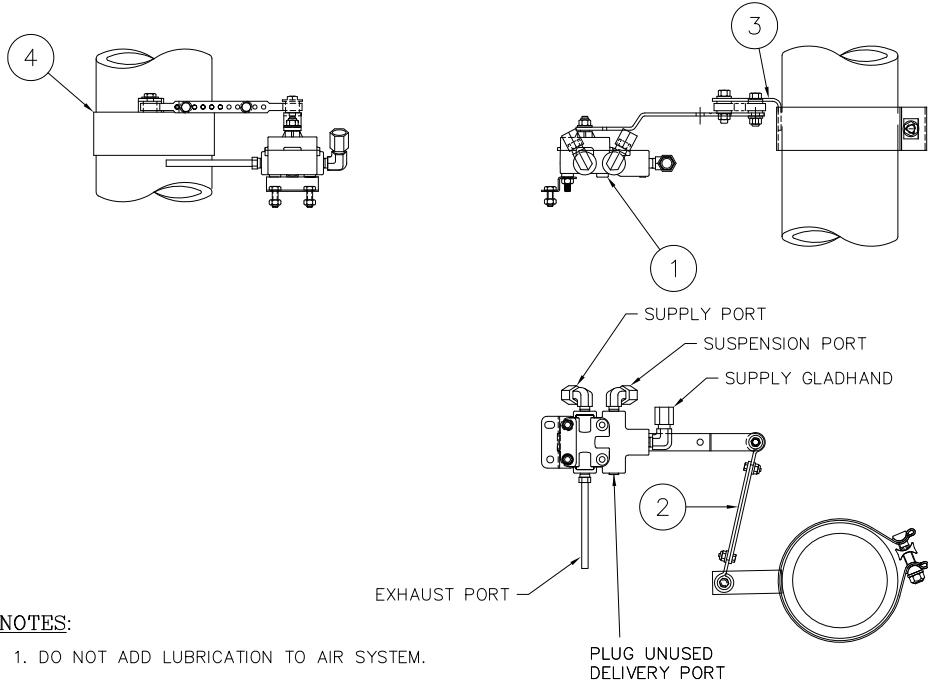


This Print remains the property of Hendrickson. All information contained thereon is confidential. It is loaned, subject to return on demand and on express condition that it is not to be copied or used directly or indirectly for any purpose other than the purpose for which it has been loaned to you.



LINK CHART	
RISE HEIGHT	LINK(INCHES)
6.50	3.50
7.50	3.50
9.00	3.50
10.00	3.50
11.00	6.25
12.00	6.25
14.00	5.50
15.00	6.25
16.00	9.25
17.00	10.00

BILL OF MATERIALS			
HCV WITH DUMP			AKHD-235-3
			REVISION 14
ITEM	PART NO.	DESCRIPTION	QTY.
1	A-29391	HCV W/DUMP	1
2	A-14187	LINK ASSEMBLY - BOLTED	1
3	B-23293	HCV BRACKET	1
4	B-26593-1	CLAMP, BAND	1
5	B-38941	PRESSURE PROTECTION VALVE	1
*6	DWG C-24911	HIGH FLOW HCV KIT FOR INTRAAX® UNDERSLUNG	1
*7	L-668	INSTALLATION INSTRUCTIONS	1
*8	L-373	CAUTION STICKER	1
*9	A-34960	HCV SUB-KIT (#9)	1
*10	A-29874	HCV SUB-KIT (#5)	1
* NOT SHOWN			WEIGHT: 2.94



NOTES:

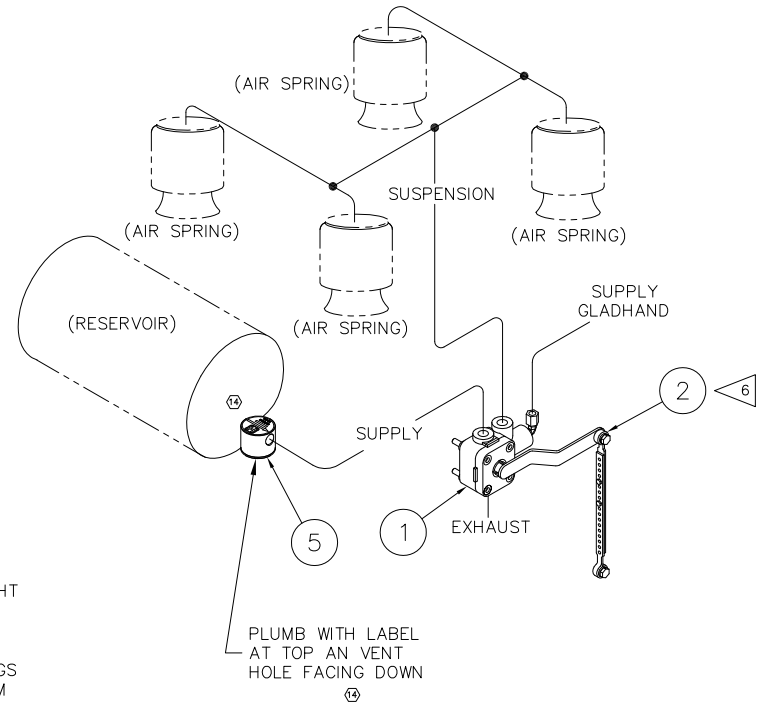
- DO NOT ADD LUBRICATION TO AIR SYSTEM.
- ALL CONNECTIONS MUST BE LEAK PROOF.
- AVOID BENDS IN AIR LINES.
- AIR LINE FITTINGS AND LINES TO BE FURNISHED BY INSTALLER. 3/8" O.D. POLYIMIDE TUBING RECOMMENDED.
- APPLICATION - ALL TRAILERS USING INTRAAX® AAL, AAEDL, AND AAEDT SUSPENSION MODELS.
- TRIM & BOLT LINKS TO SPECIFIED LENGTH IN LINK CHART.
- AIR UP SUSPENSION UNTIL AXLE IS SET AT PROPER RIDE HEIGHT. INSERT LOCATING PIN IN HCV CONTROL ARM TO HOLD ARM IN NEUTRAL POSITION. INSTALL ONE END OF THE LINK TO THE HEIGHT CONTROL VALVE. INSTALL BRACKET (ITEM 3) AND THE BAND CLAMP (ITEM 4) LOOSELY ON THE AXLE. ROTATE ITEMS 3 AND 4 TO LINE UP THE MOUNTING HOLE AND THE OTHER END OF THE LINK. INSTALL LINK FASTENER AND TIGHTEN NUT. DO NOT OVER-TIGHTEN LINK FASTENER TO ALLOW THE LINK TO ROTATE FREELY. TIGHTEN THE BAND CLAMP (ITEM 4) TO 50-60 FT-LB, BEING CAREFUL NOT TO CHANGE THE ORIENTATION OF ITEM 3.

OPERATION:

VALVE ARM HORIZONTAL
 FRAME IS AT PRESET HEIGHT
 NO AIR FLOW OCCURRING.

VALVE ARM DOWN
 FRAME IS HIGH, AIR SPRINGS
 ARE EXHAUSTED UNTIL ARM
 IS HORIZONTAL.

VALVE ARM UP
 FRAME IS LOW, AIR SPRINGS
 ARE INFLATED UNTIL ARM
 IS HORIZONTAL.



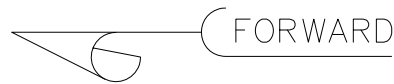
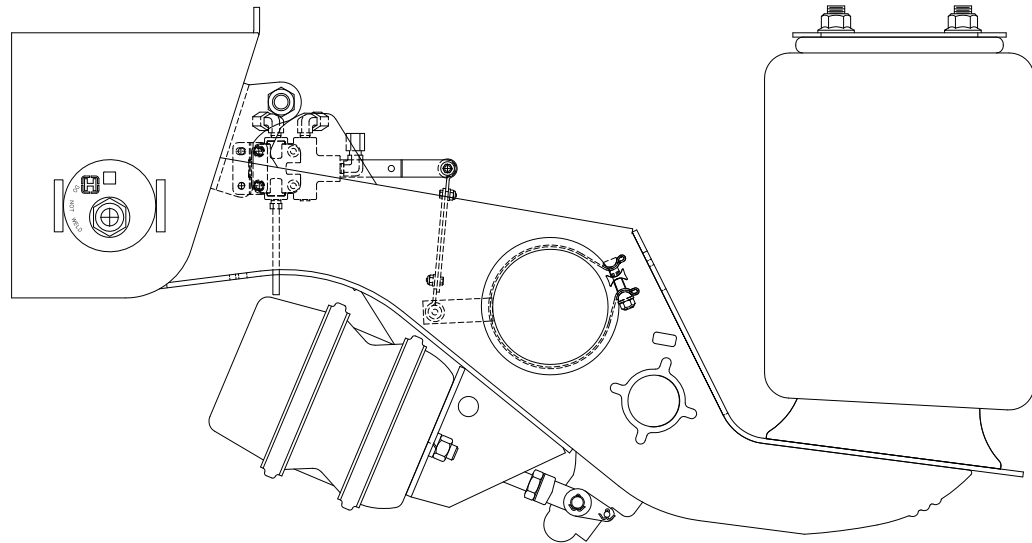
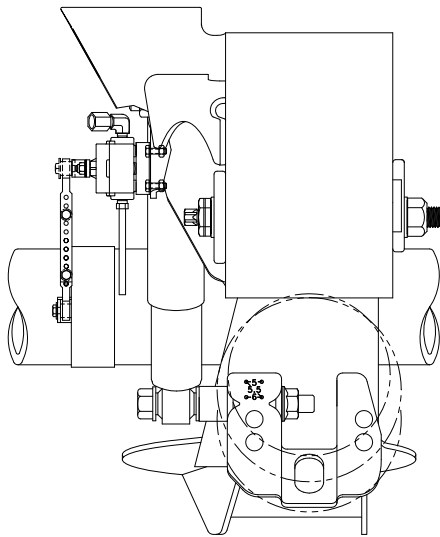
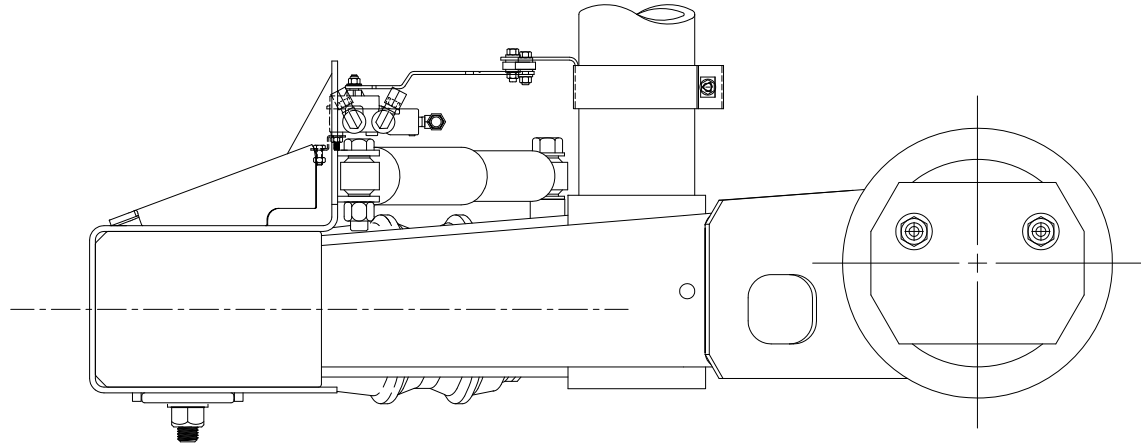
FUNCTION:

AUTOMATIC HEIGHT CONTROL.
 AUTOMATIC SUSPENSION DUMP.

P
 PRODUCTION

 TRAILER COMMERCIAL VEHICLE SYSTEMS 2070 INDUSTRIAL PLACE S.E., CANTON, OH 44707-2600 U.S.A.	UNLESS OTHERWISE NOTED: DIMENSIONS ARE IN INCHES		14 32402 BLM 02-25-19 13 24284 DPB 06-02-15 12 19076 PSD 08-25-10 11 16040 PSD 10-12-07	DRAWN BY L. WILSON DATE 3-3-99 CHKD BY G. SHENKLE 4-21-99 APP'D BY J. CERVANTEZ	THIS DRAWING IS THE CONFIDENTIAL PROPERTY OF HENDRICKSON	SCALE NTS (SIZE) PAGE 2 OF 3 DRAWING NO. C-24911
	DIMENSIONS ADHERE TO ANSI Y14.5M-1982 REV. ECN NO. BY DATE					

This Print remains the property of Hendrickson. All information contained thereon is confidential. It is loaned, subject to return on demand and on express condition that it is not to be copied or used directly or indirectly for any purpose other than the purpose for which it has been loaned to you.



P
PRODUCTION



TRAILER COMMERCIAL VEHICLE SYSTEMS
2070 INDUSTRIAL PLACE S.E., CANTON, OH 44707-2600 U.S.A.

UNLESS OTHERWISE NOTED: TOLERANCES ARE: .X: ± .1 .XX: ± .06 .XXX: ± .030 ANGULAR: ± 0.5°	DIMENSIONS ARE: INCHES 14 32402 13 24284 12 19076 11 16040	BLM 02-25-19 DPB 06-02-15 PSD 08-25-10 PSD 10-12-07	REV. ECN NO. BY DATE	DRAWN BY L. WILSON	DATE 3-3-99
3RD ANGLE PROJECTION	DIMENSIONS ADHERE TO ANSI Y14.5M-1982	REV. ECN NO. BY DATE	REV. ECN NO. BY DATE	CHKD BY 4-21-99 G. SHENKLE	APPRD BY J. CERVANTEZ

HIGH FLOW HCV KIT
FOR INTRAAX® UNDERSLUNG

SCALE
.25=1.00
(SIZE)

PAGE
3 OF 3
DRAWING No.

C-24911