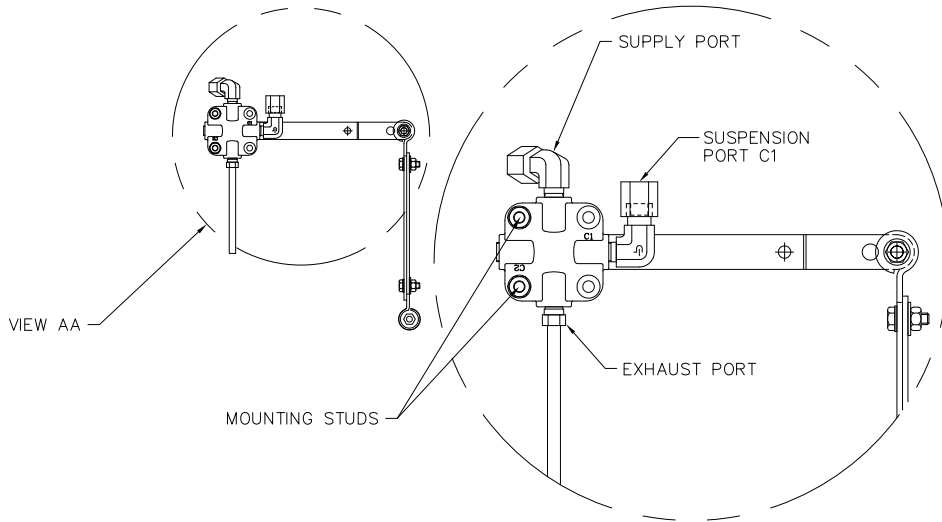
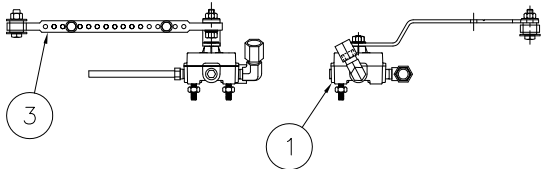
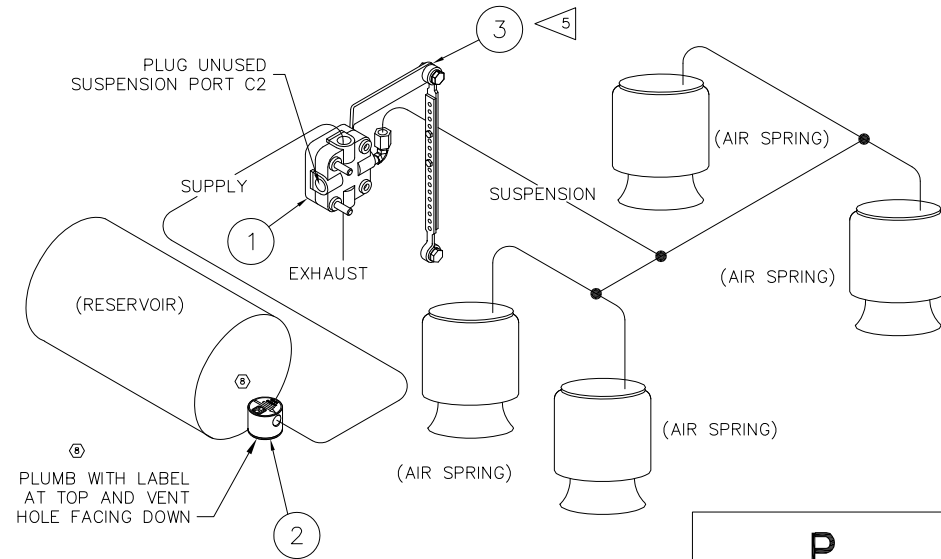


This Print remains the property of Hendrickson. All information contained thereon is confidential. It is loaned, subject to return on demand and on express condition that it is not to be copied or used directly or indirectly for any purpose other than the purpose for which it has been loaned to you.

BILL OF MATERIALS			
HCV WITHOUT DUMP			AKH-239-3
			REVISION 8
ITEM	PART NO.	DESCRIPTION	QTY.
1	A-28651	HCV - VALVE ONLY	1
2	B-38941	PRESSURE PROTECTION VALVE	1
3	A-14187	LINK ASSEMBLY - BOLTED	1
*4	L-668	INSTALLATION INSTRUCTIONS	1
*5	DWG C-25071	NON DELAY HCV KIT FOR T MODEL SUSPENSIONS	1
*6	A-29870	HCV SUB-KIT (#1)	1
* NOT SHOWN			WEIGHT: 1.62



VIEW AA
SCALE: .50=1.00



PLUMB WITH LABEL AT TOP AND VENT HOLE FACING DOWN

NOTES:

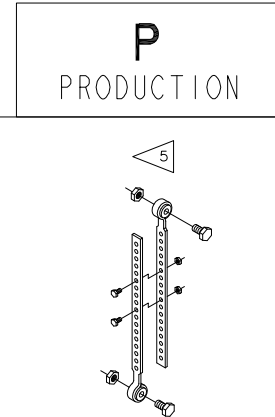
- DO NOT ADD LUBRICATION TO AIR SYSTEM.
- ALL CONNECTIONS MUST BE LEAK PROOF.
- AVOID BENDS IN AIR LINES.
- AIR LINE FITTINGS AND LINES TO BE FURNISHED BY INSTALLER. 3/8" O.D. POLYIMIDE TUBING RECOMMENDED.
- TRIM & BOLT LINKS AS REQ'D TO HOLD HEIGHT CONTROL VALVE IN NEUTRAL POSITION WHEN SUSPENSION IS AT RIDE HEIGHT.
- DO NOT OVER TIGHTEN LINK MOUNTING BOLTS. THE LINK SHOULD PIVOT FREELY ABOUT THE BOLT. THE LINK, WHEN PROPERLY INSTALLED, SHOULD APPEAR VERTICAL WHEN VIEWING IT FROM THE FRONT OF THE SUSPENSION.
- TO MAKE FINE ADJUSTMENTS IN RIDE HEIGHT LOOSEN MOUNTING NUTS AND ROTATE VALVE BODY.
- ALL ITEMS SHIPPED UNASSEMBLED. FITTINGS, NUTS AND BOLTS TO BE PLACED IN A PLASTIC BAG.

OPERATION:

- VALVE ARM HORIZONTAL**
FRAME IS AT PRESET HEIGHT
NO AIR FLOW OCCURRING.
- VALVE ARM DOWN**
FRAME IS HIGH, AIR SPRINGS ARE EXHAUSTED UNTIL ARM IS HORIZONTAL.
- VALVE ARM UP**
FRAME IS LOW, AIR SPRINGS ARE INFLATED UNTIL ARM IS HORIZONTAL.

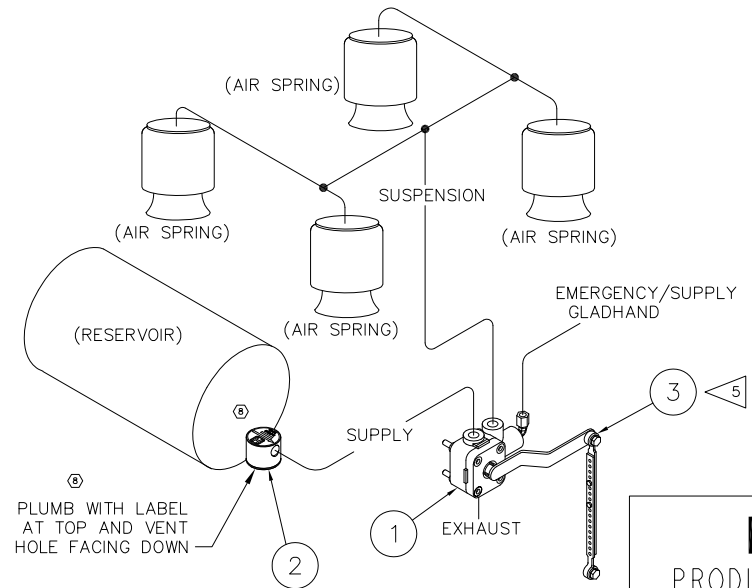
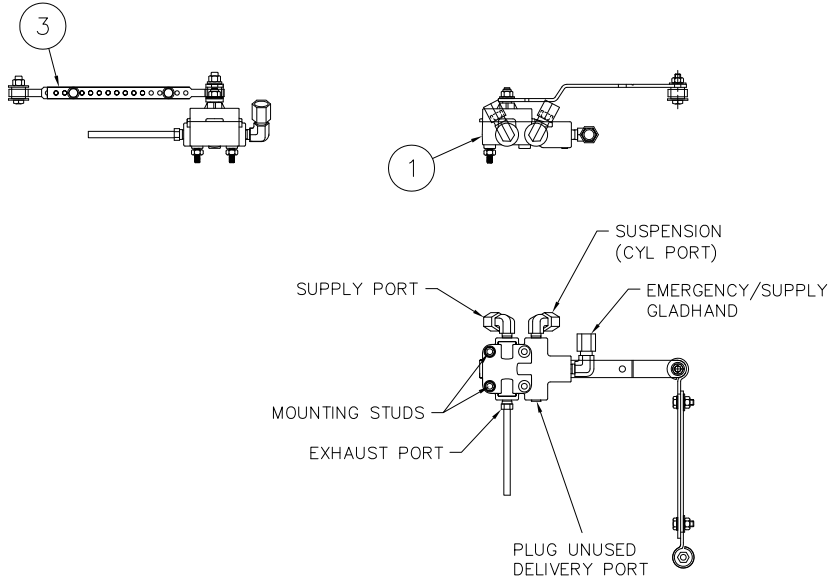
FUNCTION:

AUTOMATIC HEIGHT CONTROL.



<p>TRAILER COMMERCIAL VEHICLE SYSTEMS 2070 INDUSTRIAL PLACE S.E., CANTON, OH 44707-2600 U.S.A.</p>	UNLESS OTHERWISE NOTED: DIMENSIONS ARE IN INCHES TOLERANCES ARE: .X: ± .1 .XX: ± .06 .XXX: ± .030 ANGULAR: ± 0.5°		8 32402 BLM 02-25-19 7 16040 PSO 10-12-07 6 15594 CDR 06-05-07 5 13023 CDR 02-25-04	DRAWN BY L. WILSON DATE 4-29-99 CHKD BY G. SHENKLE DATE 5-25-99 APP'D BY J. CERVANTEZ	NON DELAY HCV KIT FOR T MODEL SUSPENSIONS	SCALE NTS (SIZE) 1 OF 3 DRAWING No. C-25071
	DIMENSIONS ADHERE TO ANSI Y14.5M-1982 REV. ECN NO. BY DATE			THIS DRAWING IS THE CONFIDENTIAL PROPERTY OF HENDRICKSON		

This Print remains the property of Hendrickson. All information contained thereon is confidential. It is loaned, subject to return on demand and on express condition that it is not to be copied or used directly or indirectly for any purpose other than the purpose for which it has been loaned to you.



BILL OF MATERIALS			
HCV WITH DUMP			AKHD-239-3
			REVISION 8
ITEM	PART NO.	DESCRIPTION	QTY.
1	A-29391	HCV W/DUMP	1
2	B-38941	PRESSURE PROTECTION VALVE	1
3	A-14187	LINK ASSEMBLY - BOLTED	1
*4	L-373	CAUTION STICKER	1
*5	DWG C-25071	NON DELAY HCV KIT FOR T MODEL SUSPENSIONS	1
*6	L-668	INSTALLATION INSTRUCTIONS	1
*7	A-29871	HCV SUB-KIT (#2)	1
*8	A-29874	HCV SUB-KIT (#5)	1

* NOT SHOWN

WEIGHT: 2.07

NOTES:

- DO NOT ADD LUBRICATION TO AIR SYSTEM.
- ALL CONNECTIONS MUST BE LEAK PROOF.
- AVOID BENDS IN AIR LINES.
- AIR LINE FITTINGS AND LINES TO BE FURNISHED BY INSTALLER. 3/8" O.D. POLYIMIDE TUBING RECOMMENDED.
- TRIM & BOLT LINKS AS REQ'D TO HOLD HEIGHT CONTROL VALVE IN NEUTRAL POSITION WHEN SUSPENSION IS AT RIDE HEIGHT.
- DO NOT OVER TIGHTEN LINK MOUNTING BOLTS. THE LINK SHOULD PIVOT FREELY ABOUT THE BOLT. THE LINK, WHEN PROPERLY INSTALLED, SHOULD APPEAR VERTICAL WHEN VIEWING IT FROM THE FRONT OF THE SUSPENSION.
- TO MAKE FINE ADJUSTMENTS IN RIDE HEIGHT LOOSEN MOUNTING NUTS AND ROTATE VALVE BODY.
- ALL ITEMS SHIPPED UNASSEMBLED. FITTINGS, NUTS AND BOLTS TO BE PLACED IN A PLASTIC BAG.

OPERATION:

VALVE ARM HORIZONTAL

FRAME IS AT PRESET HEIGHT
NO AIR FLOW OCCURRING.

VALVE ARM DOWN

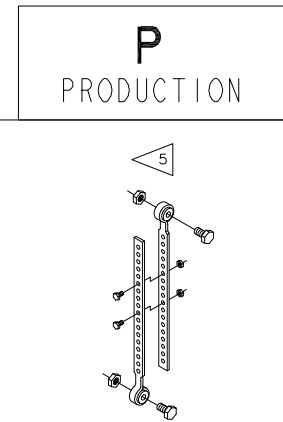
FRAME IS HIGH, AIR SPRINGS
ARE EXHAUSTED UNTIL ARM
IS HORIZONTAL.

VALVE ARM UP

FRAME IS LOW, AIR SPRINGS
ARE INFLATED UNTIL ARM
IS HORIZONTAL.

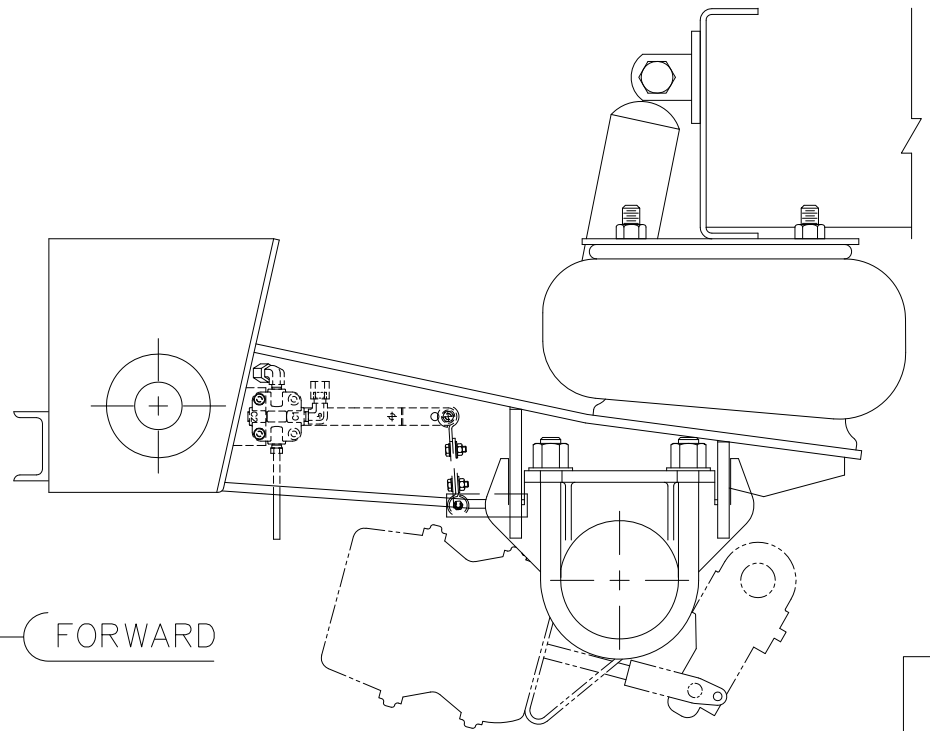
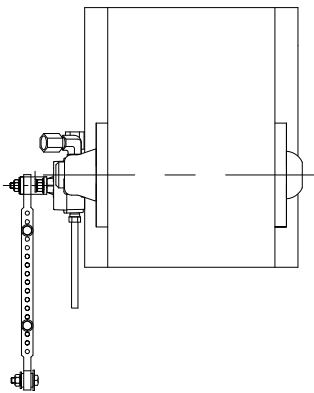
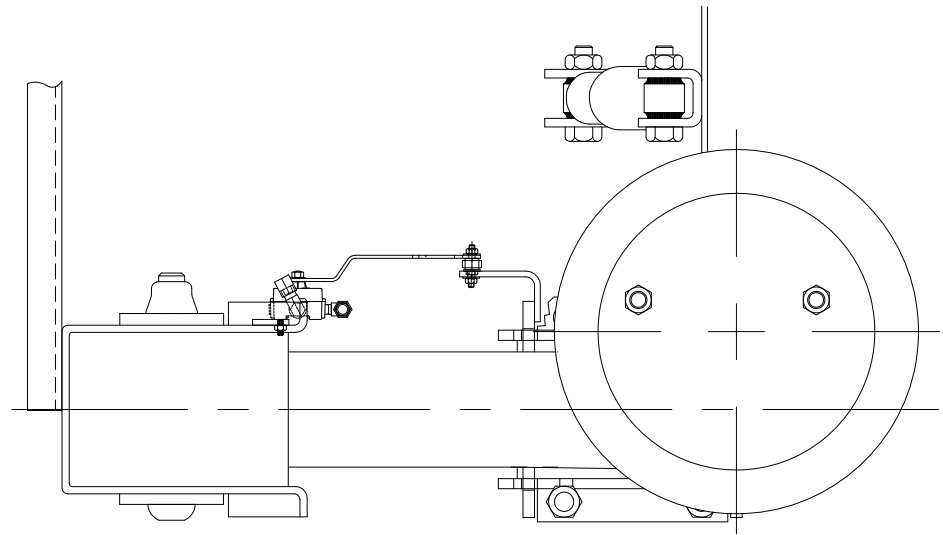
FUNCTION:

AUTOMATIC HEIGHT CONTROL.
AUTOMATIC SUSPENSION DUMP.



<p>TRAILER COMMERCIAL VEHICLE SYSTEMS 2070 INDUSTRIAL PLACE S.E., CANTON, OH 44707-2600 U.S.A.</p>	UNLESS OTHERWISE NOTED: TOLERANCES ARE: .X: ± .1 .XX: ± .06 .XXX: ± .030 ANGULAR: ± 0.5°		DIMENSIONS ARE: INCHES 7 16040 6 15594 5 13023		# 32402 7 16040 6 15594 5 13023	BLM 02-25-19 PSO 10-12-07 CDR 06-05-07 CDR 02-25-04	DRAWN BY L. WILSON DATE 4-29-99 CHKD BY G. SHENKLE 5-25-99 APP'D BY J. CERVANTEZ	THIS DRAWING IS THE CONFIDENTIAL PROPERTY OF HENDRICKSON	NON DELAY HCV KIT FOR T MODEL SUSPENSIONS	SCALE NTS (SIZE)	PAGE 2 OF 3 DRAWING NO. C-25071
	DIMENSIONS ADHERE TO ANSI Y14.5M-1982 REV. ECN NO. BY DATE										

This Print remains the property of Hendrickson. All information contained thereon is confidential. It is loaned, subject to return on demand and on express condition that it is not to be copied or used directly or indirectly for any purpose other than the purpose for which it has been loaned to you.



P
PRODUCTION

HENDRICKSON

TRAILER COMMERCIAL VEHICLE SYSTEMS
2070 INDUSTRIAL PLACE S.E., CANTON, OH 44707-2600 U.S.A.

UNLESS OTHERWISE NOTED:		8	32402	BLM	02-25-19	DRAWN BY	L. WILSON	DATE	4-29-99
TOLERANCES ARE:		7	16040	PSO	10-12-07	CHKD BY	5-25-99 G. SHENKLE	THIS DRAWING IS THE CONFIDENTIAL PROPERTY OF HENDRICKSON	
.X:	± .1	6	15594	CDR	06-05-07	APPD BY	J. CERVANTEZ		
.XX:	± .06	5	13023	CDR	02-25-04				
.XXX:	± .030								
ANGULAR:	± 0.5°								
DIMENSIONS ADHERE TO ANSI Y14.5M-1982									

NON DELAY HCV KIT FOR
T MODEL SUSPENSIONS

SCALE	PAGE
.25=1.00 (SIZE)	3 OF 3
DRAWING No. C-25071	