

# **H** PARTS LIST

## SOFTEK® Front Suspension System for Lion Bus

LIT NO: SP-312

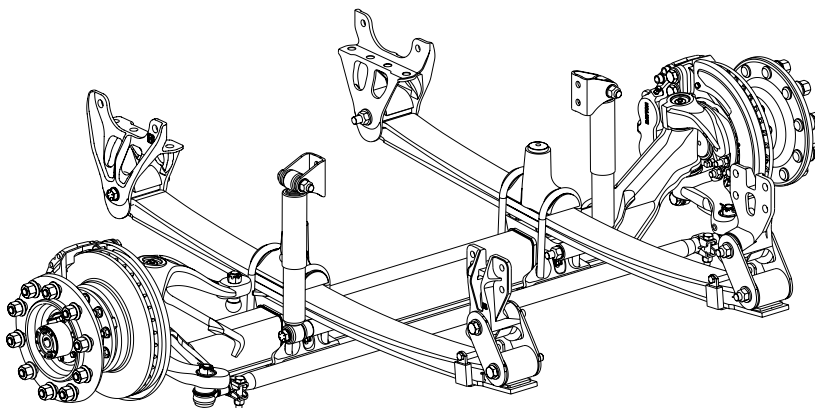
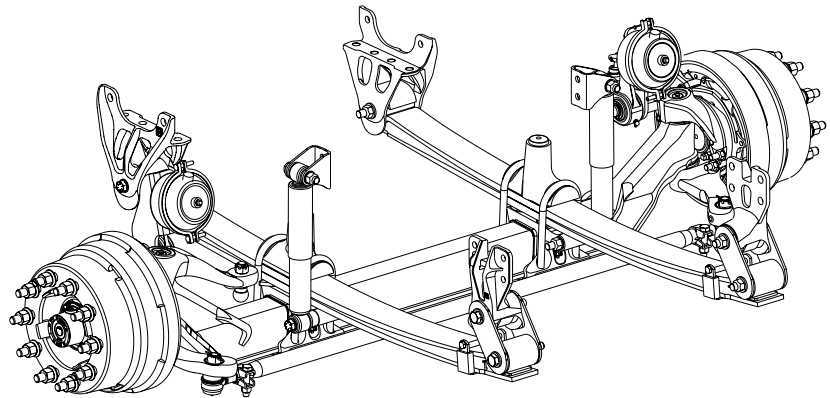
DATE: November 2018

REVISION: B

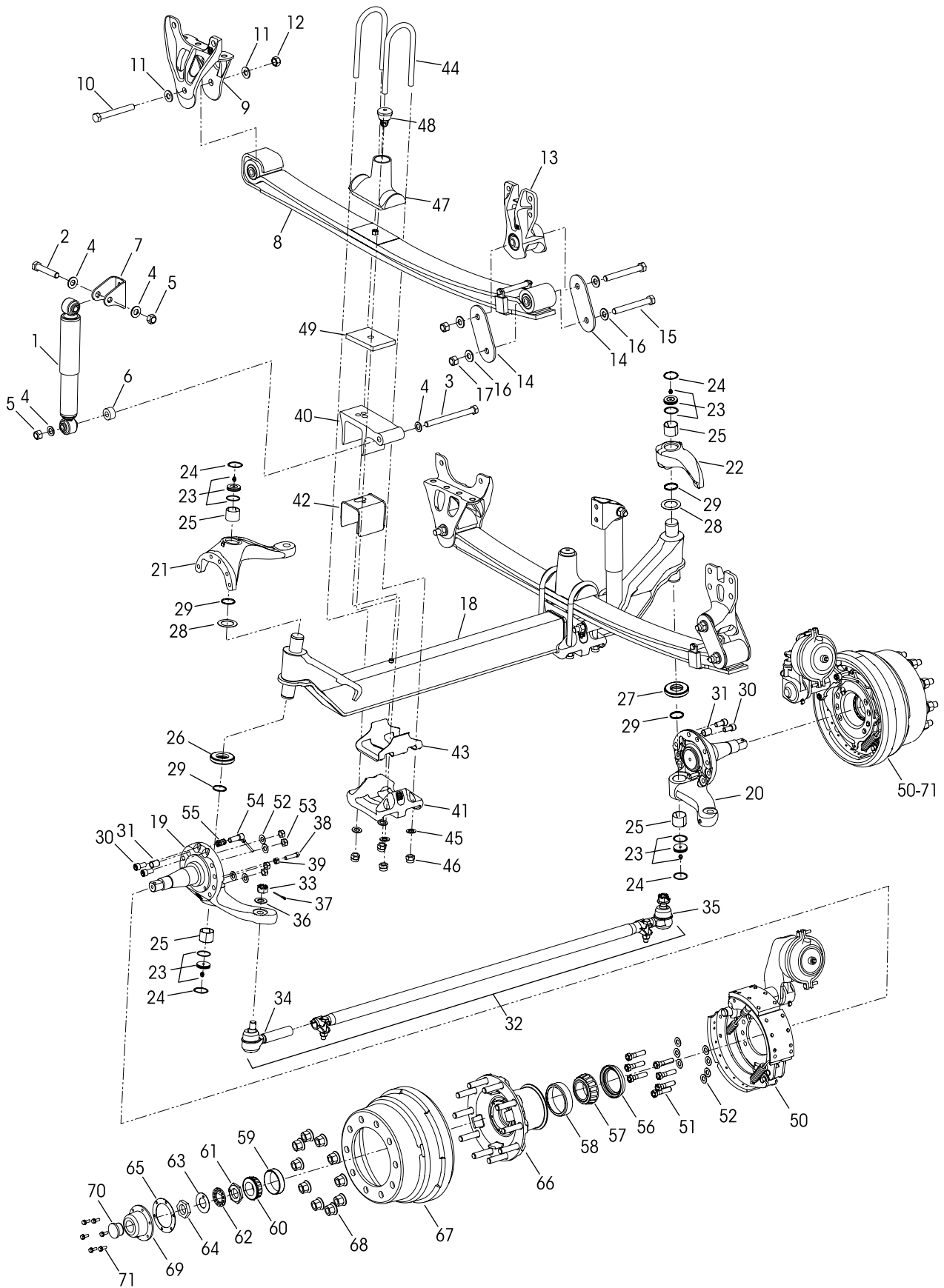
### CONTENTS

DESCRIPTION	PAGE
SOFTEK equipped with Drum Brakes . . . . .	2
SOFTEK equipped with Air Disc Brakes. . . . .	4
Special Tool . . . . .	6
Notes . . . . .	6

SOFTEK® with Drum Brakes



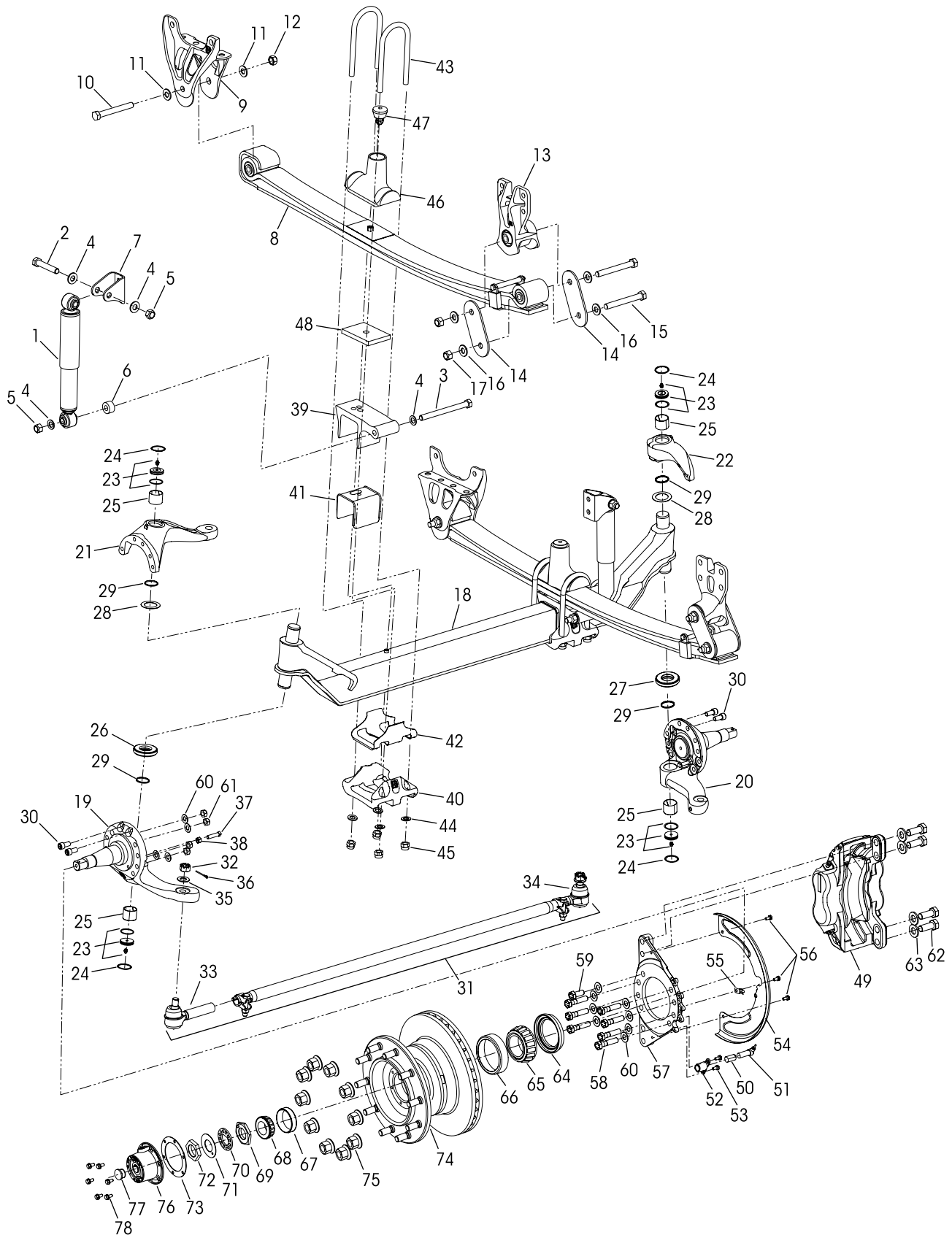
SOFTEK® with Air Disc Brakes





# SOFTEK® for Lion Bus equipped with Drum Brakes

KEY NO.	PART NO.	DESCRIPTION	VEHICLE QTY.	KEY NO.	PART NO.	DESCRIPTION	VEHICLE QTY.
1	58913-009L	Shock Absorber	2			Tie Rod Ends, 1 1/8" Threads	
2	58917-001	3/4"-10 UNC x 4 1/4" Upper Shock Bolt	2	34	70995-001	Left Hand	1
3	58917-016	3/4"-10 UNC x 8 1/2" Lower Shock Bolt	2	35	70995-002	Right Hand	1
4	22962-001	3/4" Hardened Washer	8	36	22962-007	7/8" Flat Washer	2
5	49842-000	3/4"-10 UNC Hex Locknut	4	37	17800-004	Tie Rod Nut Cotter Pin	2
6	59946-001	Shock Spacer	2		60961-069	<b>Stop Bolt Service Kit, One Side,</b> Includes Key Nos. 38-39	
7	59423-002	Shock Bracket	2	38	60238-001	1/2"-13 UNC x 2" Square Head Bolt	2
	60961-162	<b>Leaf Spring Assembly Service Kit,</b> Includes Key Nos. 8, 13-14		39	60240-000	1/2"-13 UNC Hex Jam Nut	2
8	53624-000	Leaf Spring Assembly	2	40	59952-003	Top Axle Wrap	2
9	64488-002	Front Hanger	2	41	64722-003	Bottom Axle Wrap	2
10	58258-008	M20 x 160 mm Hex Bolt	2	42	60508-000	Top Axle Wrap Liner	2
11	58246-004	M20 Hardened Washer	4	43	59845-000	Bottom Axle Wrap Liner	2
12	58259-000	M20 Locknut	2		60961-140	<b>Clamp Group Service Kit, One side,</b> Includes Key Nos. 44-46	
13	66510-001	Rear Shackle Bracket Assembly	2	44	64804-110	3/4"-16 UNF x 1 1/2" U-bolt	4
14	64314-000	Rear Shackle Plate	4	45	22962-001	3/4" Flat Washer	8
15	58258-008	M20 x 160 mm Hex Bolt	4	46	17700-035	3/4"-16 UNF 2B Nylon Locknut	8
16	58246-004	M20 Hardened Washer	8		64506-000	Top Pad/Axle Stop Assembly Includes Key Nos. 47-48	
17	58259-000	M20 Locknut	4	47	64519-000	Top Pad	2
	64502-048	STEERTEK Axle Assembly with Brake Assembly, Includes Key Nos. 18-43, 50-71		48	64080-000	Rubber Axle Stop	2
18	64905-001	Axle & Kingpin Assembly	1	49	70105-010	Front Axle Spacer - 10 mm	2
		Lower Steering Knuckle Assembly, Includes Key Nos. 25, 29, 31		50		<b>**Meritor Drum Brake Assembly, 15" x 4"</b> Left Hand Part No. QP4-1540-3085 Right Hand Part No. QP4-1540-3086	1 1
19	58900-027	Left Hand	1	51	32043-002	5/8"-11 UNC x 2 3/4" Hex Bolt	14
20	58900-028	Right Hand	1	52	22962-036	5/8" Hardened Washer	22
		Upper Steering Knuckle Assembly, Includes Key Nos. 25, 29		53	47764-000	5/8"- UNC Locknut	8
21	60903-034	Left Hand, <i>Replaces 60903-004</i>	1	54	64547-000	ABS Sensor	2
22	60904-002	Right Hand	1	55	64550-000	ABS Sensor Clip	2
		<b>Kingpin Bushing and Bearing Service Kits</b>		56		<b>**Federal Mogul Wheel Seal</b> Kit No. M380001TX0	2
	60961-040	<b>Axle Set,</b> Includes Kit Nos. 60961-009 & -039				<b>**Timken Inner Bearing One side, Set No. 413,</b> Includes Key Nos. 57-58	
	60961-009	<b>Left Hand with Composite Thrust Bearing,</b> Includes Key Nos. 23-26, 28-30 and Loctite		57		Inner Bearing Cone	2
	60961-039	<b>Right Hand with Roller Thrust Bearing,</b> Includes Key Nos. 23-25, 27-30 and Loctite		58		Inner Bearing Cup	2
23	59156-000	Grease Cap Assembly	4			<b>**Timken Outer Bearing One Side, Set No. 406,</b> Includes Key Nos. 59-60	
24	58937-000	Retaining Ring	4	59		Outer Bearing Cup	2
25	58909-000	Kingpin Bushing	4	60		Outer Bearing Cone	2
		<b>Thrust Bearing Service Kits</b>		61		<b>**Meritor 1 1/2"-12 UNF Inner Wheel</b> Bearing Adj. Nut Part No. 1227-U-541	2
	60961-043	<b>Axle Set,</b> Includes Kit Nos. 60961-041 & -042		62		<b>**Meritor 3/4" Wheel End Lock Ring</b> Part No. 1229-G-475	2
	60961-041	<b>Left Hand Composite Thrust Bearing,</b> Includes Key Nos. 26, 28-30 and Loctite		63		<b>**Meritor 0.05" Wheel End Lock Washer</b> Part No. 1229-F-474	2
	60961-042	<b>Right Hand Roller Thrust Bearing,</b> Includes Key Nos. 27-30 and Loctite		64		<b>**Meritor Wheel End Outer Nut No. 1227-B-106</b>	2
26	59828-000	Left Hand Composite Thrust Bearing	1	65		<b>**Stemco Hubcap Gasket Part No. 330-3024</b>	2
27	64256-000	Right Hand Roller Thrust Bearing	1	66		<b>**Webb Hub Part No. 25201-1T</b>	2
28		Kingpin Shim	As Req.	67		<b>**Webb Drum Part No. 65545B</b>	2
	60259-001X	0.005" Thickness (Pack of 4)		68		<b>**M22 x 1.5 Two-piece Wheel Nut</b>	20
	60259-002	0.047" Thickness		69		<b>**Stemco Hubcap Assembly - 6",</b> Kit No. 343-4346, Includes Key No. 70	2
29	58910-001	Kingpin Seal	4	70		*Rubber Plug	2
30	60236-001	5/8"-11 UNC Socket Head Cap Screw	4	71	64545-002	5/16"-18 UNC x 3/4" Hex Bolt with Retainer Washer (Hubcap Bolts)	12
	60937-000	Loctite (Red) Compound Tube (Not Shown)	1				
31	64246-000	ABS Sensor Sleeve	2				
32	76877-003	Tie Rod Assembly, Includes Key Nos. 33-35	1				
33		<b>**5/8" Castle Nut</b>	2				
		<b>Tie Rod End Service Kits</b>					
	60961-734	<b>Axle Set,</b> Includes 60961-736 and 60961-741					
	60961-736	<b>Left Hand,</b> Includes Key Nos. 34, 36-37					
	60961-741	<b>Right Hand,</b> Includes Key Nos. 35-37					





VEHICLE				VEHICLE			
KEY NO.	PART NO.	DESCRIPTION	QTY.	KEY NO.	PART NO.	DESCRIPTION	QTY.
1	58913-009L	Shock Absorber	2	35	22962-007	7/8" Flat Washer	2
2	58917-001	3/4"-10 UNC x 4 1/4" Upper Shock Bolt	2	36	17800-004	Tie Rod Nut Cotter Pin	2
3	58917-016	3/4"-10 UNC x 8 1/2" Lower Shock Bolt	2		60961-069	<b>Stop Bolt Service Kit, One Side,</b> Includes Key Nos. 37-38	
4	22962-001	3/4" Hardened Washer	8	37	60238-001	1/2"-13 UNC x 2" Square Head Bolt	2
5	49842-000	3/4"-10 UNC Hex Locknut	4	38	60240-000	1/2"-13 UNC Hex Jam Nut	2
6	59946-001	Shock Spacer	2	39	59952-003	Top Axle Wrap	2
7	59423-002	Shock Bracket	2	40	64722-003	Bottom Axle Wrap	2
	60961-162	<b>Leaf Spring Assembly Service Kit,</b> Includes Key Nos. 8, 13-14		41	60508-000	Top Axle Wrap Liner	2
8	53624-000	Leaf Spring Assembly	2	42	59845-000	Bottom Axle Wrap Liner	2
9	64488-002	Front Hanger	2		60961-140	<b>Clamp Group Service Kit, One side,</b> Includes Key Nos. 43-45	
10	58258-008	M20 x 160 mm Hex Bolt	2	43	64804-110	3/4"-16 UNF x 1 1/4" U-bolt	4
11	58246-004	M20 Hardened Washer	4	44	22962-001	3/4" Flat Washer	8
12	58259-000	M20 Locknut	2	45	17700-035	3/4"-16 UNF 2B Nylon Locknut	8
13	66510-001	Rear Shackle Bracket Assembly	2		64506-000	Top Pad/Axle Stop Assembly Includes Key Nos. 46-47	
14	64314-000	Rear Shackle Plate	4	46	64519-000	Top Pad	2
15	58258-008	M20 x 160 mm Hex Bolt	4	47	64080-000	Rubber Axle Stop	2
16	58246-004	M20 Hardened Washer	8	48	70105-010	Front Axle Spacer - 10 mm	2
17	58259-000	M20 Locknut	4	49		<b>**Meritor Brake Caliper Assembly</b> Left Hand Part No. 60450482007 Right Hand Part No. 60450483007	2
		STEERTEK Axle Assembly with Brake Assembly, Includes Key Nos. 18-42, 49-65, 68-78		50		<b>**Wabco ABS Sensor Clip Part No. 300088</b>	2
	64502-050	Vehicles built <b>AFTER</b> July 20, 2017		51		<b>**Wabco ABS Sensor Part No. 441 032 814 0</b>	2
	64502-049	Vehicles built <b>PRIOR TO</b> July 20, 2017		52		<b>**Meritor ABS Bracket Part No. 69180466</b>	2
18	64905-001	Axle & Kingpin Assembly	1	53	18160-012	5/8"-18 UNC x 1/2" Bolt (ABS Bracket)	4
		Steering Knuckle Assembly, Includes Key Nos. 25, 29		54		<b>**Meritor Dust Shield Part No. 3264W1453</b>	2
19		Left Hand Lower	1	55		<b>**Meritor Dust Shield Clip Part No. 2257V1270</b>	2
	58900-053	Vehicles built <b>AFTER</b> July 20, 2017		56	64201-001	M8 x 1 1/4"-6G Cap Screw (Dust Shield)	6
	58900-061	Vehicles built <b>PRIOR TO</b> July 20, 2017		57		<b>**Meritor Torque Plate</b> Left Hand Part No. 69120952 Right Hand Part No. 69120951	2
20		Right Hand Lower	1	58	32043-002	5/8"-11 UNC x 2 3/4" Hex Bolt (Torque Plate)	14
	58900-054	Vehicles built <b>AFTER</b> July 20, 2017		59	32043-021	5/8"-11 UNC x 1 1/2" Hex Bolt (Torque Plate)	2
	58900-062	Vehicles built <b>PRIOR TO</b> July 20, 2017		60	22962-036	5/8" Hardened Washer (Torque Plate)	24
21	60903-004	Left Hand Upper	1	61	47764-000	5/8"-11 UNC Locknut (Torque Plate)	8
22	60904-002	Right Hand Upper	1	62	58258-017	M20 x 2.5-6G Hex Bolt (Caliper)	8
		<b>Kingpin Bushing and Bearing Service Kits</b>		63	58246-018	M20 Hardened Washer (Caliper) <i>Replaces 58246-009</i>	8
	60961-040	<b>Axle Set,</b> Includes Kit Nos. 60961-009 & -039		64		<b>**Federal Mogul Wheel Seal</b> Kit No. M380001TX0	2
	60961-009	<b>Left Hand with Composite Thrust Bearing,</b> Includes Key Nos. 23-26, 28-30 and Loctite				<b>**Timken Inner Bearing One side, Set No. 413,</b> Includes Key Nos. 65-66	
	60961-039	<b>Right Hand with Roller Thrust Bearing,</b> Includes Key Nos. 23-25, 27-30 and Loctite		65		Inner Bearing Cone	2
23	59156-000	Grease Cap Assembly	4	66		Inner Bearing Cup	2
24	58937-000	Retaining Ring	4			<b>**Timken Outer Bearing One Side, Set No. 406,</b> Includes Key Nos. 67-68	
25	58909-000	Kingpin Bushing	4	67		Outer Bearing Cup	2
		<b>Thrust Bearing Service Kits</b>		68		Outer Bearing Cone	2
	60961-043	<b>Axle Set,</b> Includes Kit Nos. 60961-041 & -042		69		<b>**Meritor 1 1/2"-12 UNF Inner Wheel</b> Bearing Adj. Nut Part No. 1227-U-541	2
	60961-041	<b>Left Hand Composite Thrust Bearing,</b> Includes Key Nos. 26, 28-30 and Loctite		70		<b>**Meritor 3/4" Wheel End Lock Ring</b> Part No. 1229-G-475	2
	60961-042	<b>Right Hand Roller Thrust Bearing,</b> Includes Key Nos. 27-30 and Loctite		71		<b>**Meritor 0.05" Wheel End Lock Washer</b> Part No. 1229-F-474	2
26	59828-000	Left Hand Composite Thrust Bearing	1	72		<b>**Meritor Wheel End Outer Nut No. 1227-B-106</b>	2
27	64256-000	Right Hand Roller Thrust Bearing	1	73		<b>**Stemco Hubcap Gasket Part No. 330-3024</b>	2
28		Kingpin Shim	As Req.	74		<b>**Meritor Hub &amp; Rotor Assembly,</b> Steel Hub 15.38 x 1.54 Rotor Part No. 17160671003	2
	60259-001X	0.005" Thickness (Pack of 4)		75		<b>**M22 x 1.5 Two-piece Wheel Nut</b>	20
	60259-002	0.047" Thickness		76		<b>**Stemco Hubcap Assembly - 6",</b> Kit No. 343-4346, Includes Key No. 77	2
29	58910-001	Kingpin Seal	4	77		<b>*Rubber Plug</b>	2
30	60236-001	5/8"-11 UNC Socket Head Cap Screw	4	78	64545-002	5/8"-18 UNC x 3/4" Hex Bolt with Retainer Washer (Hubcap Bolts)	12
	60937-000	Loctite (Red) Compound Tube (Not Shown)	1				
31		Tie Rod Assembly, 1 1/8" Threads, Includes Key Nos. 32-34	1				
	76877-002	Vehicles built <b>AFTER</b> July 20, 2017					
	76877-003	Vehicles built <b>PRIOR TO</b> July 20, 2017					
32		<b>3/8" Castle Nut</b>	2				
		<b>Tie Rod End Service Kits</b>					
	60961-734	<b>Axle Set,</b> Includes 60961-736 and 60961-741					
	60961-736	<b>Left Hand,</b> Includes Key Nos. 33, 35-36					
	60961-741	<b>Right Hand,</b> Includes Key Nos. 34-36					
		Tie Rod End, 1 1/8" Threads					
33	70995-001	Left Hand	1				
34	70995-002	Right Hand	1				

## ■ Special Tool

### KINGPIN BUSHING TOOL – ADJUSTABLE STRAIGHT FLUTE REAMER

The dimension of cutting diameter must facilitate a range of **1.802"-1.812"**



**NOTES:** \* Item included in assembly only, part not sold separately.

\*\* Not supplied by Hendrickson for aftermarket service purposes. Description and part number listed for reference only. For more information and assistance with service, maintenance and rebuild instructions on these components see below component manufacturers:

- Federal Mogul technical and parts support 800.325.8886 or online at [www.fme-cat.com](http://www.fme-cat.com)
- Meritor technical and parts support 888.725.9355 or online, parts ([www.meritorpartsexpress.com](http://www.meritorpartsexpress.com)), technical support ([www.meritorbullpen.com](http://www.meritorbullpen.com))
- Stemco technical and part support 800.527.8492 or online at [www.stemco.com](http://www.stemco.com)
- Timken at technical and part support 866.984.6536 or online at [www.timken.com/resources](http://www.timken.com/resources) or Timken YouTube series, Timken Tricks of the Trade (Installing a Timken® Set-Right® Bearing)
- WABCO technical and parts support 855.228.3203 or online at [www.wabco-auto.com/aftermarket-services/inform-product-catalog](http://www.wabco-auto.com/aftermarket-services/inform-product-catalog)
- Webb technical and part support 800.633.3256 or online at [www.webbwheel.com](http://www.webbwheel.com)

\*\*\* Not supplied by Hendrickson, used for reference only. Contact the vehicle manufacturer for more information.

This is a general parts list to provide directional information. Components may vary by model. Questions in regards to parts, contact Hendrickson Truck Parts at 1.866.755.5968 (Toll-free U.S. and Canada), 630.910.2800 (Outside U.S. and Canada) or e-mail: [truckparts@hendrickson-intl.com](mailto:truckparts@hendrickson-intl.com).

[www.hendrickson-intl.com](http://www.hendrickson-intl.com)



Truck Commercial Vehicle Systems  
800 South Frontage Road  
Woodridge, IL 60517-4904 USA

1.866.755.5968 (Toll-free U.S. and Canada)  
1.630.910.2800 (Outside U.S. and Canada)  
Fax 1.630.910.2899

"HENDRICKSON", the "H" logo and other Hendrickson marks designated with the "®" symbol are registered trademarks of Hendrickson USA, L.L.C. in the United States and certain other countries.

Information contained in this literature was accurate at the time of publication. Product changes may have been made after the copyright date that are not reflected.  
© 2017-2018 Hendrickson USA, L.L.C. All Rights Reserved