

- Proven performance
- Proven productivity for demanding applications
- Proven durability



HT230T



HT300YB



HT250YS



HT250US

To learn more about HT SERIES,  
call 866.743.3247 or visit  
[www.hendrickson-intl.com](http://www.hendrickson-intl.com)

## Our workhorse suspensions help deliver value and profits by the trailer load

**Hendrickson HT™ SERIES** trailer air suspensions stand out as true trucking industry workhorses. Hundreds of thousands of HT suspensions are on the road under various types of trailers from vans to autohaulers, from platforms to pups.



The HT Series helps deliver value and additional profits by the trailer load. Our state-of-the-art manufacturing techniques and fewer parts provide the HT Series its durability and reliability for reduced maintenance and downtime.

Its smooth ride provides superior protection for cargo and equipment to boost your bottom line.

Hendrickson is a pioneer in modern air suspension systems and continues to define the frontiers of suspension technology. Drawing from more than 100 years of industry leadership, we bring an advanced level of skill and experience to the table. Hendrickson uses high quality raw materials and componentry while employing leading-edge design, testing and manufacturing technologies such as finite element modeling, dynamic testing and robotic manufacturing.

Known for rugged dependability, HT Series air suspensions exist for a broad range of applications, on- and off-highway. Our patented<sup>▲</sup> TRI-FUNCTIONAL<sup>®</sup> Bushing in unison with a rigid beam and solid axle connection provides the ideal combination of ride softness and roll stability. This level of performance combined with our commitment to quality and innovation makes Hendrickson a leader in trailer air suspensions around the globe.

### HT Series suspensions have it all.

**All the benefits** — Bigger payloads; lower maintenance; outstanding ride quality for protection of cargo, equipment and drivers; superior stability.

**All the flexibility** — Primary suspensions in many ride heights, slider systems and fixed subframes. Wide range of installation configurations: single axles, lift axles, close space and wide spread.

**All the strength and reliability** — Rugged construction, proven performance on- and off-highway, exacting quality control, industry-leading warranties.

<sup>▲</sup>This product is covered by at least one or more U.S. and/or foreign patents and/or pending U.S. and/or foreign patent applications. See Hendrickson for details.

Call your trailer dealer or Hendrickson at 1-866-RIDEAIR (743-3247) or visit [www.hendrickson-intl.com](http://www.hendrickson-intl.com).





# From a modern suspension pioneer — a de

## HT™ SERIES — Reliable, affordable, quality suspensions for dependable operation

### FEATURES AND BENEFITS

- Designed for use with multiple brake sizes including 12-inch
- Multiple brake chamber orientations available
- TRI-FUNCTIONAL® Bushing with up to a five-year limited warranty\*
- Five-year structural warranty\*
- Off-the-shelf replacement parts

*\*Contact your local Hendrickson representative for complete warranty*

### Top-Mount Air Suspensions HT190T, HT230T and HT300T

- Available in 20,000-, 23,000- and 30,000-lb. capacities
- Ride heights from 12 to 23 inches
- High control versions available for certain models
- Some models available for use with steerable axles
- Some models available for use with air disc brakes
- QUIK-ALIGN® pivot connection option available for all capacities
- HT230T and HT300T are a robotically welded design to promote consistent structural integrity



### HT250T

- 23,000-lb. capacity
- Ride heights from 12 to 19 inches
- Excellent for high travel suspension applications (up to 5.9-inch)
- Can be combined with a UBL™ UNDER BEAM LIFT™ lift axle
- Available for use with self-steer axles
- Standard with QUIK-ALIGN pivot connection



### Underslung Air Suspensions HT190U, HT250US and HT300US

- Available in 20,000-, 25,000- and 30,000-lb. capacities
- Ride heights from 3.5 to 17 inches
- High control versions available for certain models
- Some models available for use with steerable axles
- QUIK-ALIGN comes standard on the HT250US and HT300US
- Robotically welded designs to promote consistent structural integrity



### Y-Beam Air Suspensions HT250YS Y-Beam

- 25,000-lb. capacity
- 80 pounds lighter than original HT250Y
- Ride heights of 6.5, 7.5 and 9 inches
- For use in conjunction with HT250US (25,000 lb.) on applications such as lowboys, etc.
- Robotically welded design to promote consistent structural integrity
- Standard with QUIK-ALIGN pivot connection



### HT300YB Y-Beam

- 30,000-lb. capacity
- Ride heights of 6.5, 7.5 and 9 inches
- For use in conjunction with HT300US (30,000-lb.) on applications such as lowboys, etc.
- Standard with the QUIK-ALIGN pivot connection



# Design solutions for diverse trailer applications.

## Conventional Ride Heights

Single-axle capacities from 20,000 to 30,000 pounds; ride heights from 12 to 23 inches — Axle arrangement: single, tandem (122-inch max. axle spacing), tri or quad.



## Low Ride Heights

Single-axle capacities from 20,000 to 30,000 pounds; ride heights as low as 3.5 inches; excellent ground clearance on liftable models — Axle arrangement: single, tandem (122-inch max. axle spacing), tri or quad.



## High Control Models

For use on pup trailers and trailers with multi-articulation points like doubles, triples, B-trains, dollies and full trailers; 20,000- to 30,000-pound capacities; ride heights from 3.5 to 23 inches.



## Maximizing Cube

MAXILIFT™ elevates high-cube, low deck trailers to standard dock height; suspension capacity of 20,000 pounds at ride height and 17,000 pounds when lifted. Available in 9-inch ride height for fixed applications and 9- to 12-inch ride heights for sliding applications.



## Applications

- VANS
- PLATFORMS
- DUMPS
- DRY BULK TANKERS
- DOLLIES and PUPS
- LOWBOYS
- AUTO HAULERS
- TRAILERS ON FLAT CARS
- B-TRAINS
- MICHIGAN TRAINS
- CONTAINER CHASSIS
- LIQUID TANKERS
- GRAIN HOPPERS
- FORESTRY TRAILERS





# Proven Design — Option Versatility

## Hendrickson Stands Behind You

### Superior support

- Five-year structural warranty\*
- Off-the-shelf replacement parts

## Lifts

- UBL™ UNDER BEAM LIFT™ available for use on select HT SERIES models
- CL, HTCL, VCL and HTBL lifts available for use on other models with 23,000 to 30,000-lb. capacities
- SBL® SIDE BEAM LIFT® available for HT250US models



## UBL™ UNDER BEAM LIFT™

*Adds operational flexibility, helps extend tire life and improves maneuverability*

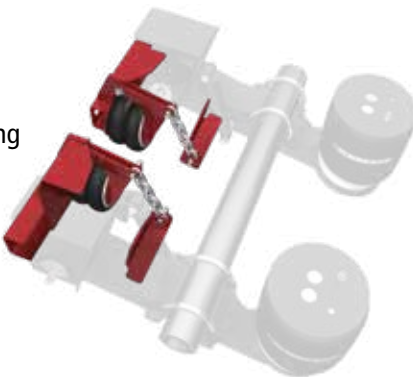
- Combine with HT230, HT250T and HT300T
- No chains, cables or metal-on-metal parts to wear or bind
- Galvanized and standard primer options



See UNDER BEAM LIFT flyer - Hendrickson Literature No. L727

## HT250US SBL® SIDE BEAM LIFT®

- Patented<sup>▲</sup> design
- Lighter weight than current center lifts by up to 20 pounds
- Maximizes ground clearance, more efficient to mount and frees up the middle of the trailer
- Improved design to ease installation
- Does not limit axle spacing
- Lift mounts independent of the trailer frame
- Not dependent on suspension beam centers like a center lift



## Engineered for Efficiency

### Rigid trailing arm / solid axle connection

- Simplicity of design reduces the number of moving parts, bushings and fasteners for minimal maintenance
- Provides superior stability while eliminating torque rods and stabilizer bars
- Eliminates retorquing requirements
- Low spring rate for exceptional ride quality
- Compatible with industry standard axles
- Large bore shocks for longer life

## TRI-FUNCTIONAL® Bushing

*Proven technology for mile after mile of dependable service*

- Voids positioned to optimally absorb road forces
- The ideal combination of ride softness and roll stability
- Specially formulated rubber compound stands up to tough operating conditions
- Only two long-life bushings in each suspension
- Up to five-year warranty\* depending on application

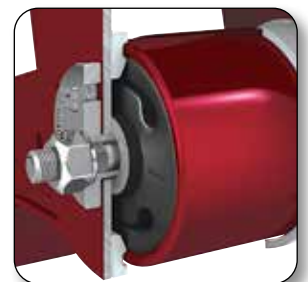


## QUIK-ALIGN® Pivot Connection

*(standard on most models)*

### Fast and easy axle realignment

- Helps save time and money
- Shear type bolt eliminates guesswork
- Realign using standard tools — no torque wrench or welding required
- Helps optimize tire life



## Bolt-On Suspension Mounting

- Available with bolt-on frame brackets and air spring mounts for use on aluminum trailer frames.

\* Contact your local Hendrickson representative or refer to L583 Comprehensive Warranty Statement for complete warranty terms, conditions and limitations.

▲ This product is covered by at least one or more U.S. and/or foreign patents and/or pending U.S. and/or foreign patent applications. See Hendrickson for details.

# We can satisfy your special requirements

- Suspension lift kits
- Specialized suspension travel and damping
- Other ride heights
- Trailer raising, lowering and deck lock technology
- Electronic controls
- Air controls



## HT™ SERIES Specifications

Model	Suspension Capacity (pounds) <sup>1</sup>	Ride Height (inches) <sup>2</sup>	Base Model Weights (pounds) <sup>4</sup>
HT190T	20,000	14 - 17	269
HT230	23,000	14 - 19	299
HT250T <sup>3</sup>	23,000	12 - 19	345
HT300T	30,000	15 - 23	355
HT190U	20,000	6 - 12	338
HT250US	25,000	3.5 - 14	361
HT300US	30,000	5.5 - 17	389
HT250YS	25,000	6.5 - 9	417
HT300YB	30,000	6.5 - 9	502

1 Capacity of suspension only, axle not included.

2 Suspension ride heights must be set within Hendrickson specifications in order to ensure proper suspension performance. Failure to maintain proper ride height settings can lead to suspension, axle or trailer damage. Varying ride heights between suspensions may impact equalization.

3 The HT250T is intended for use as a liftable suspension, in combination with other HT primary models. It may also be used in place of an HT230 when the application calls for high travel or lower ride height.

4 Weights are base suspension models. Contact Hendrickson for specific model weight.



*Actual product performance may vary depending upon vehicle configuration, operation, service and other factors.*

*All applications must comply with applicable Hendrickson specifications and must be approved by the respective vehicle manufacturer with the vehicle in its original, as-built configuration. Contact Hendrickson for additional details regarding specifications, applications, capacities, and operation, service and maintenance instructions.*

**Call Hendrickson at 330.489.0045 or 866.RIDEAIR (743.3247) for additional information.**



[www.hendrickson-intl.com](http://www.hendrickson-intl.com)

### TRAILER COMMERCIAL VEHICLE SYSTEMS

2070 Industrial Place SE  
Canton, OH 44707-2641 USA  
866.RIDEAIR (743.3247)  
330.489.0045 • Fax 800.696.4416

### Hendrickson Canada

250 Chrysler Drive, Unit #3  
Brampton, ON Canada L6S 6B6  
800.668.5360  
905.789.1030 • Fax 905.789.1033

### Hendrickson Mexicana

Circuito El Marqués Sur #29  
Parque Industrial El Marqués  
Pob. El Colorado, Municipio El Marqués,  
Querétaro, México C.P. 76246  
+52 (442) 296.3600 • Fax +52 (442) 296.3601

L632 Rev J 10-19

© 1998 – 2019 Hendrickson USA, L.L.C. All Rights Reserved. All trademarks shown are owned by Hendrickson USA, L.L.C., or one of its affiliates, in one or more countries. Information contained in this literature was accurate at the time of publication. Product changes may have been made after the copyright date that are not reflected.

Printed in United States of America