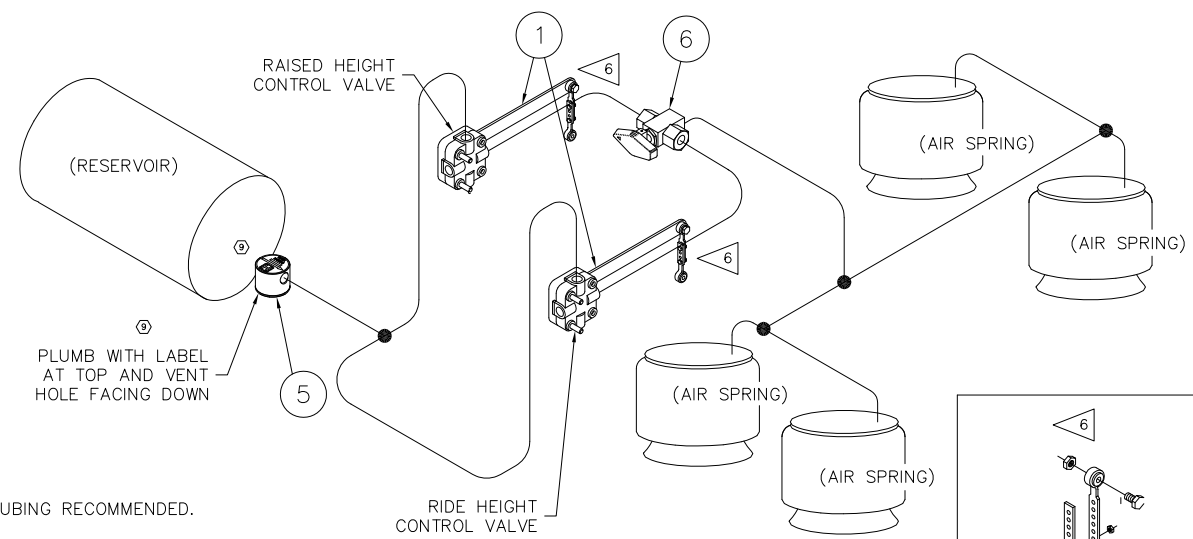
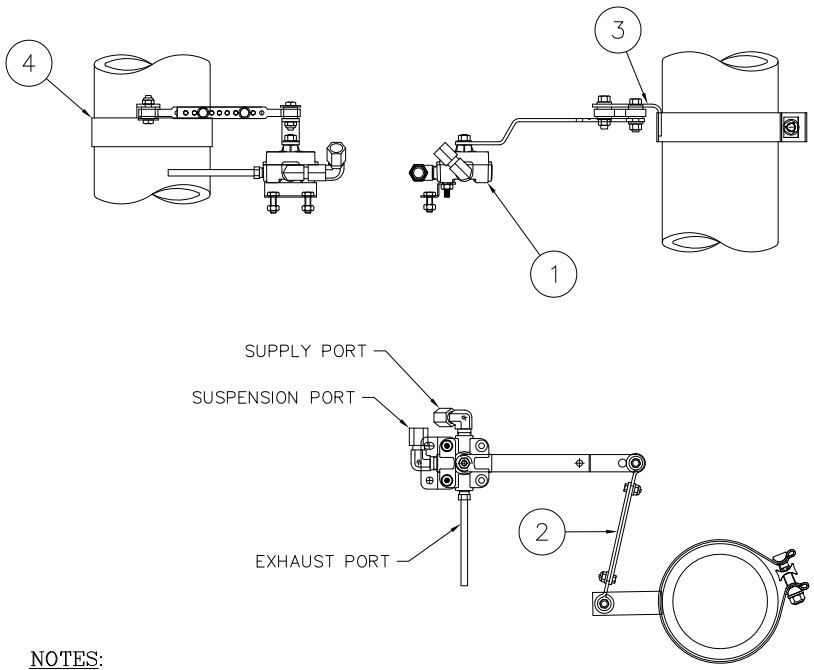


| RIDE HEIGHT VALVE LINK LENGTH |              |
|-------------------------------|--------------|
| RIDE HEIGHT                   | LINK(INCHES) |
| 6.50                          | 3.50         |
| 7.50                          | 3.50         |
| 8.00                          | 3.50         |
| 9.00                          | 3.50         |
| 12.00                         | 6.25         |
| 14.00                         | 5.50         |
| 15.00                         | 6.25         |
| 16.00                         | 9.25         |
| 17.00                         | 10.00        |
| 19.00                         | 10.00        |

| RAISED HEIGHT VALVE LINK LENGTH |              |
|---------------------------------|--------------|
| RIDE HEIGHT                     | LINK(INCHES) |
| 6.50                            | 5.50         |
| 7.50                            | 5.50         |
| 8.00                            | 5.50         |
| 9.00                            | 5.50         |
| 12.00                           | 8.50         |
| 14.00                           | 10.75        |
| 15.00                           | 10.75        |
| 16.00                           | 10.75        |
| 17.00                           | 10.75        |
| 19.00                           | 10.75        |

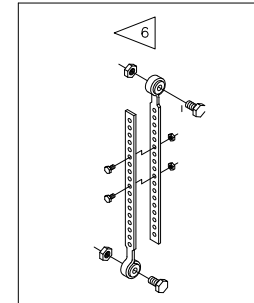
This Print remains the property of Hendrickson. All information contained thereon is confidential. It is loaned, subject to return on demand and on express condition that it is not to be copied or used directly or indirectly for any purpose other than the purpose for which it has been loaned to you.

| BILL OF MATERIALS |             |                                     |             |            |
|-------------------|-------------|-------------------------------------|-------------|------------|
| HCV WITHOUT DUMP  |             |                                     | AKH0267-3   | AKH0267B-3 |
|                   |             |                                     | REVISION    |            |
|                   |             |                                     | 8           | 7          |
| ITEM              | PART NO.    | DESCRIPTION                         | QTY.        | QTY.       |
| 1                 | A-28651     | HCV - VALVE ONLY                    | 2           | 2          |
| 2                 | A-14187     | LINK ASSEMBLY - BOLTED              | 2           | 2          |
| 3                 | B-23293     | HCV BRACKET                         | 2           | 2          |
| 4                 | B-26593-1   | CLAMP BAND                          | 2           | 2          |
| 5                 | B-38941     | PRESSURE PROTECTION VALVE           | 1           | -          |
| 6                 | A-22535     | 3-WAY BALL VALVE                    | 1           | 1          |
| *7                | DWG AKH0267 | HIGH FLOW HCV KIT FOR AAZL W/ RAISE | 1           | 1          |
| *8                | L-668       | INSTALLATION INSTRUCTIONS           | 1           | 1          |
| *9                | A-34959     | HCV SUB-KIT (#8)                    | 2           | 2          |
| * NOT SHOWN       |             |                                     | WEIGHT (LB) |            |
|                   |             |                                     | 5.12        | 4.95       |

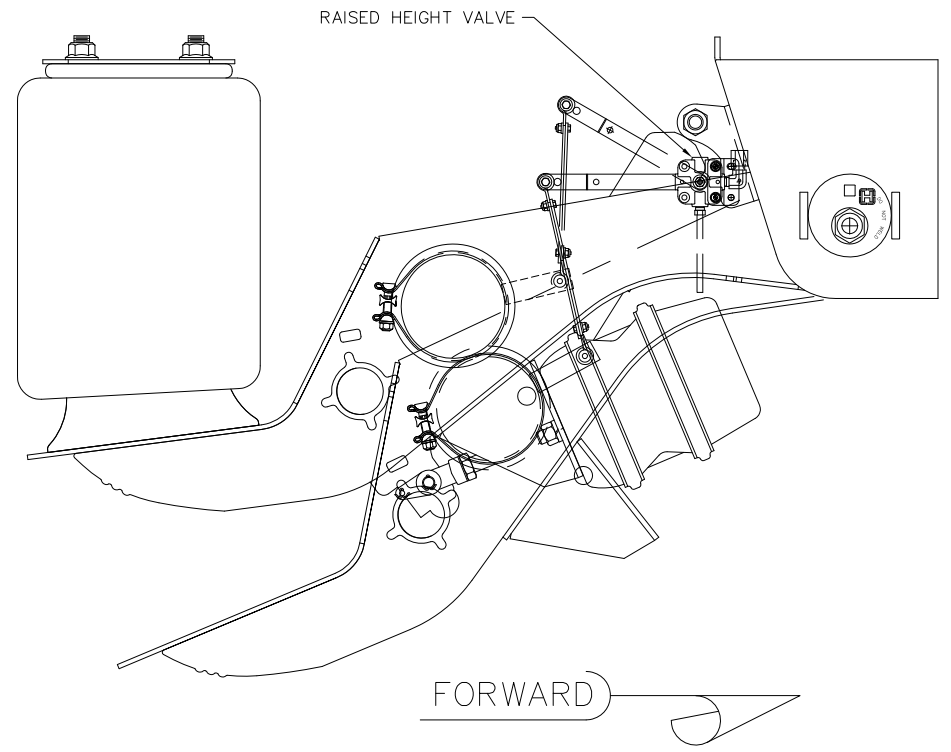
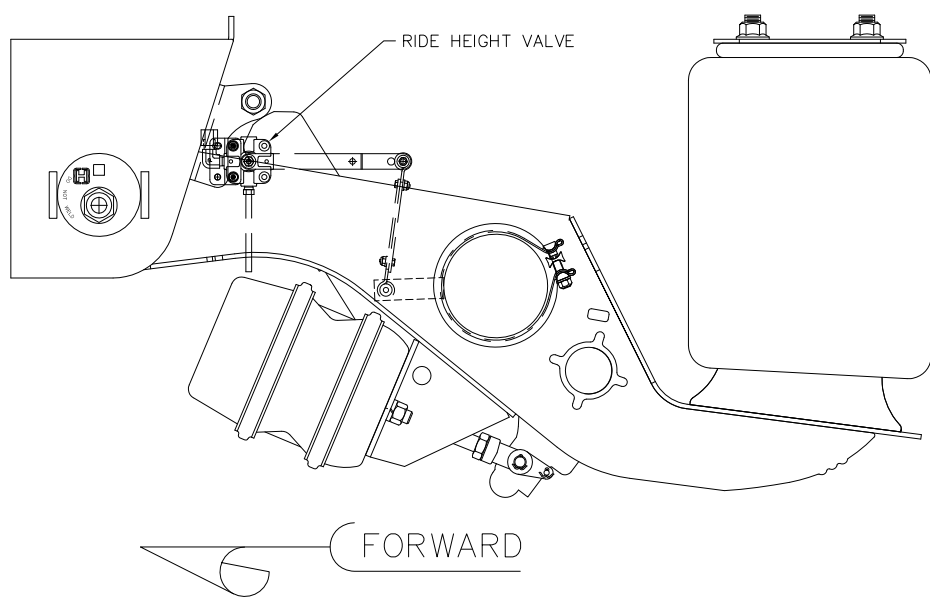
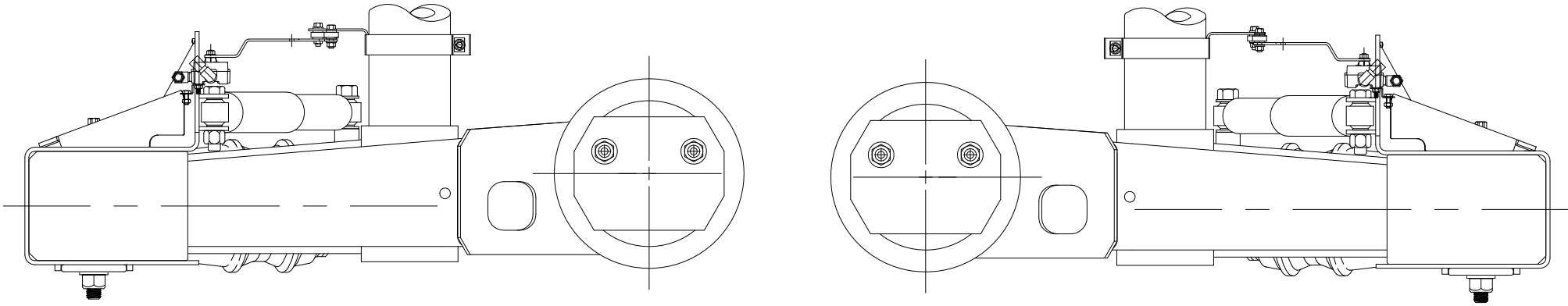


**NOTES:**

- DO NOT ADD LUBRICATION TO AIR SYSTEM.
- ALL CONNECTIONS MUST BE LEAK PROOF.
- AVOID BENDS IN AIR LINES.
- AIR LINE FITTINGS AND LINES TO BE FURNISHED BY INSTALLER. 3/8" O.D. POLYIMIDE TUBING RECOMMENDED.
- APPLICATION - TRAILERS USING AAZL SUSPENSION MODELS.
- TRIM & BOLT LINKS TO SPECIFIED LENGTH IN LINK CHART.
- AIR UP SUSPENSION UNTIL AXLE IS SET AT PROPER RIDE HEIGHT. INSERT LOCATING PIN IN HCV CONTROL ARM TO HOLD ARM IN NEUTRAL POSITION. ASSEMBLE LINKS TO THE LENGTH GIVEN IN THE TABLE. INSTALL ONE END OF THE LINK TO THE HEIGHT CONTROL VALVE. INSTALL BRACKET (ITEM 3) AND THE BAND CLAMP (ITEM 4) LOOSELY ON THE AXLE. ROTATE ITEMS 3 AND 4 TO LINE UP THE MOUNTING HOLE AND THE OTHER END OF THE LINK. INSTALL LINK FASTENER AND TIGHTEN NUT. TIGHTEN THE BAND CLAMP (ITEM 4) TO 45-60 FT-LB, BEING CAREFUL NOT TO CHANGE THE ORIENTATION OF ITEM 3. TURN THE MANUAL VALVE (ITEM 6) AND AIR UP THE SUSPENSION TO THE RAISED POSITION USING THE RAISED HEIGHT VALVE. REPEAT THE PROCESS FOR THE RAISED HEIGHT CONTROL VALVE. ONCE BOTH VALVES ARE INSTALLED, CYCLE THE SUSPENSION BETWEEN DUMPED AND RAISED POSITIONS MAKING SURE THAT THE CONTROL ARMS OF BOTH VALVES ARE CLEAR OF ANY OBSTACLES.
- ITEM 9 SHIPPED LOOSE IN A PLASTIC BAG.
- RECOMMENDED AIRLINE FITTING INSTALLATION TORQUE NOT TO EXCEED 7 FT-LB.



**P**  
PRODUCTION



This Print remains the property of Hendrickson. All information contained thereon is confidential. It is loaned, subject to return on demand and on express condition that it is not to be copied or used directly or indirectly for any purpose other than the purpose for which it has been loaned to you.

**P**  
PRODUCTION

|  |  |  |   |                                 |  |  |                                       |                             |
|--|--|--|---|---------------------------------|--|--|---------------------------------------|-----------------------------|
| <br><b>HENDRICKSON</b><br>TRAILER COMMERCIAL VEHICLE SYSTEMS<br>2070 INDUSTRIAL PLACE S.E., CANTON, OH 44707-2600 U.S.A. | UNLESS OTHERWISE NOTED:<br>TOLERANCES ARE: .X: ± .1<br>.XX: ± .06<br>.XXX: ± .030<br>ANGULAR: ± 0.5° |  | DIMENSIONS ARE: INCHES<br>9 32391 BLM 02-22-19<br>70 25944 SRP 11-07-16<br>7 24284 DPB 05-29-15<br>6 19076 PSD 08-16-10 |                                 | DRAWN BY: J.CERVANTEZ<br>DATE: 3-18-03 | THIS DRAWING IS THE CONFIDENTIAL PROPERTY OF HENDRICKSON | SCALE: NTS<br>(SIZE)                  | PAGE: 2 OF 2<br>DRAWING No. |
|  | DIMENSIONS ADHERE TO ANSI Y14.5M-1982  |  | 3RD ANGLE PROJECTION  | CHKD BY: C. ANDERSON<br>3/19/03 | APPD BY: J. WHITE                      |  | HIGH FLOW HCV KIT FOR AAZL WITH RAISE | AKH0267                     |