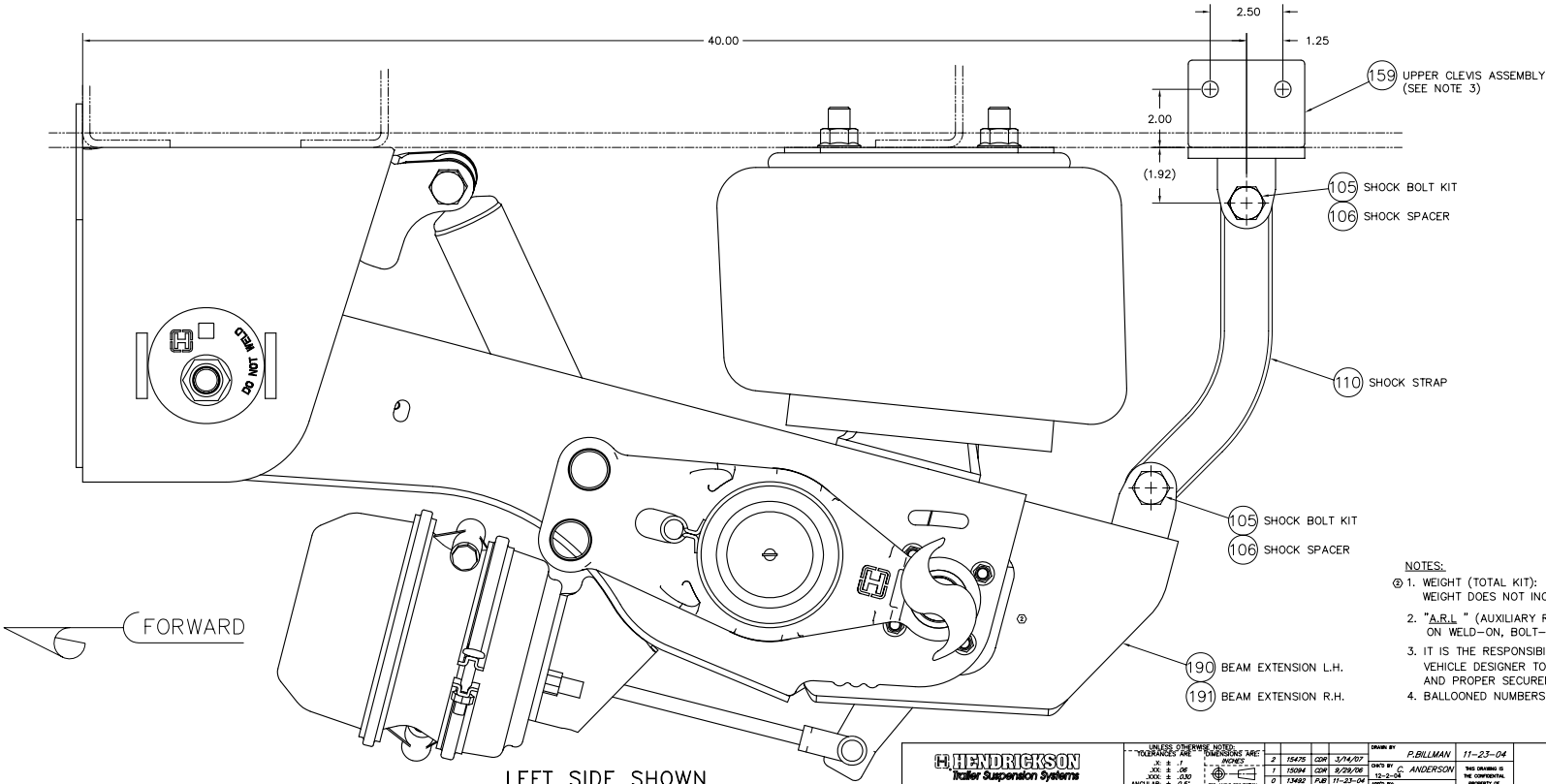
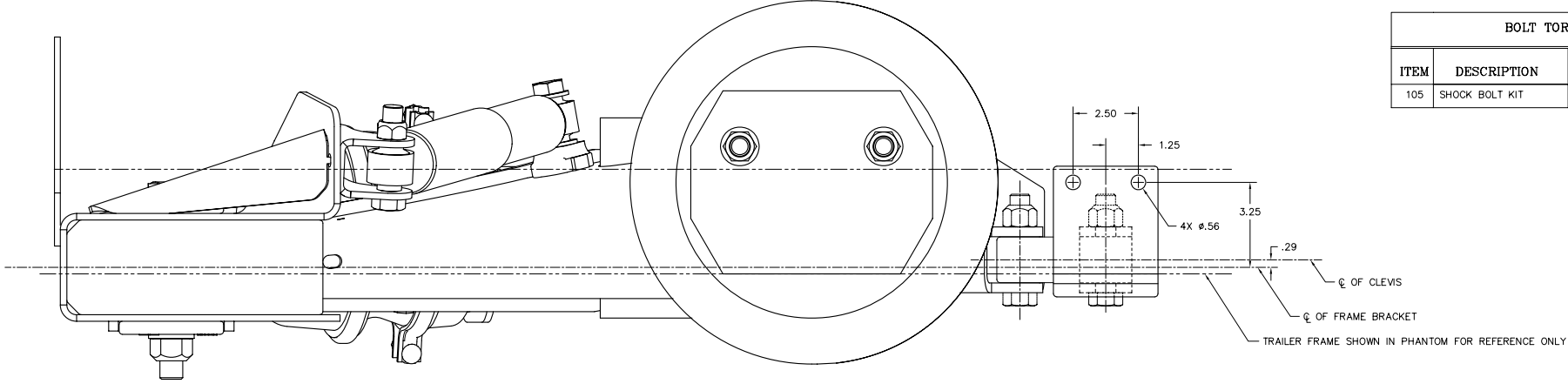


| ITEM | DESCRIPTION | ARL |
|-------|--------------------|---------|
| 1-199 | ARL KIT COMPONENTS | B-26594 |

| BOLT TORQUE VALUES | | | |
|--------------------|----------------|--------|-----------|
| ITEM | DESCRIPTION | SIZE | TORQUE |
| 105 | SHOCK BOLT KIT | 3/4-10 | 150 FT LB |

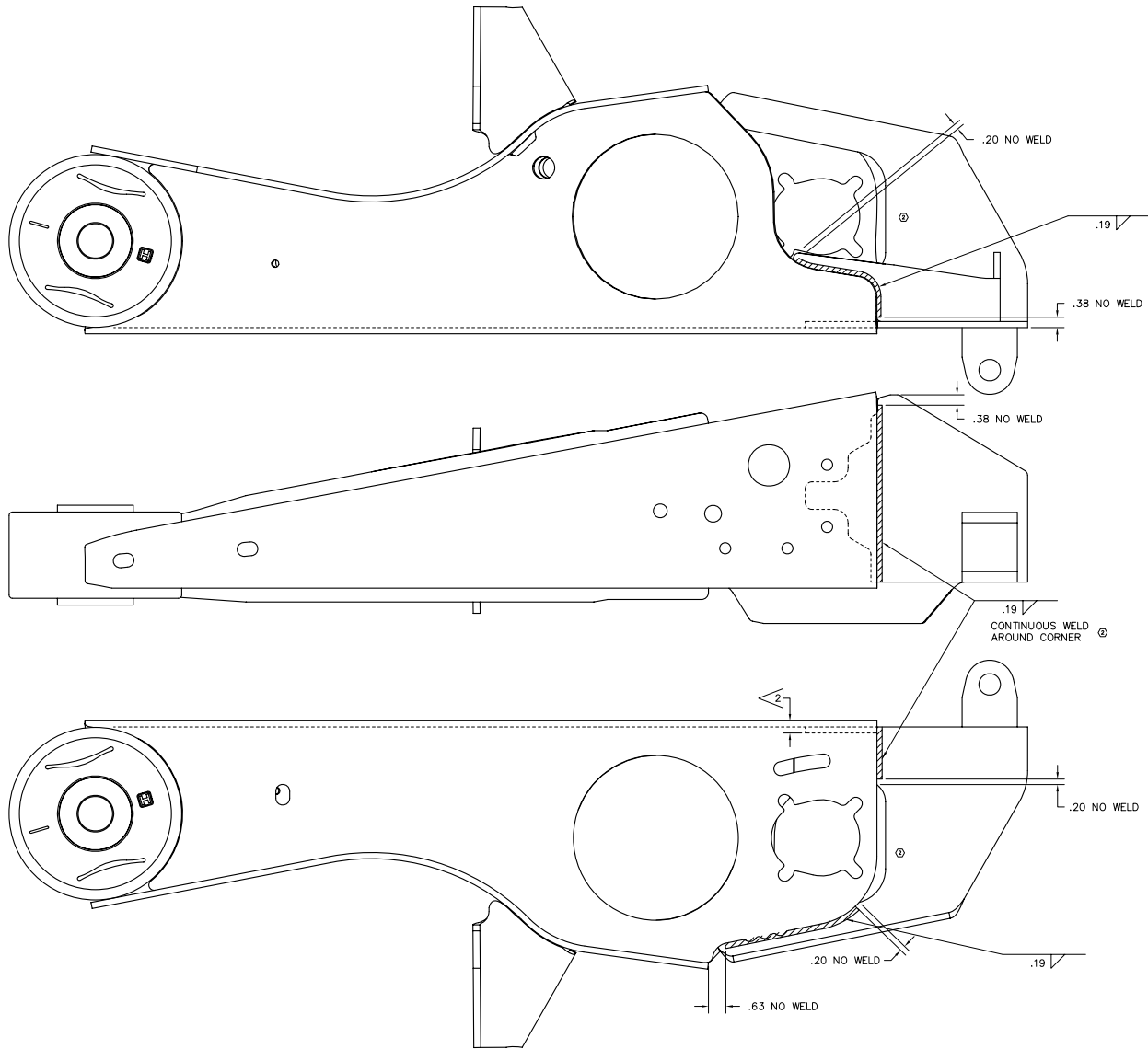


This Print remains the property of Hendrickson. All information contained thereon is confidential. It is loaned, subject to return on demand and on express condition that it is not to be copied or used directly or indirectly for any purpose other than the purpose for which it has been loaned to you.

- NOTES:**
- ① 1. WEIGHT (TOTAL KIT): 29.51 LB. WEIGHT DOES NOT INCLUDE MOUNTING METHOD OF TOP CLEVIS
 - 2. "A.R.L." (AUXILIARY REBOUND LIMITER) KIT WILL WORK ON WELD-ON, BOLT-ON, WING OR WINGLESS FRAME BRACKET APPLICATIONS.
 - 3. IT IS THE RESPONSIBILITY OF THE SUSPENSION INSTALLER AND THE VEHICLE DESIGNER TO PROVIDE BOTH ADEQUATE VEHICLE FRAME DESIGN AND PROPER SECUREMENT METHOD FOR THE A.R.L. UPPER CLEVIS ASSEMBLY (ITEM 159).
 - 4. BALLOONED NUMBERS FOR HENDRICKSON INTERNAL USE ONLY.

LEFT SIDE SHOWN

| | | | |
|---|---|--|---|
| <p>HENDRICKSON Trailer Suspension Systems</p> <p>3700 HANCOCK PLACE SE. CANTON, OH 44705-1000 U.S.A.</p> | <p>UNLESS OTHERWISE NOTED, DIMENSIONS ARE IN INCHES.</p> <p>FRAMES BY: P. BILLMAN 11-23-04</p> <p>DESIGNED BY: C. ANDERSON</p> <p>DATE: 11-23-04</p> <p>BY: R. CORE</p> | <p>INTRAAX® AANT ARL KIT "L" BRACKET</p> | <p>SCALE: 1:50=1.00</p> <p>DRAWING NO.: D-28541</p> <p>PAGE: 1 OF 2</p> |
| | <p>15475 2 15475 2 15475 2 15475 2</p> <p>15094 7 15094 7 15094 7 15094 7</p> <p>15482 2 15482 2 15482 2 15482 2</p> <p>11-23-04 11-23-04 11-23-04 11-23-04</p> | <p>11-23-04</p> | <p>11-23-04</p> |



VIEW AA
SCALE: 1.00=1.00

- ASSEMBLY NOTES:
1. GRIND PAINT OFF END OF BEAM.
 2. CLAMP EXTENDED TAB OF BEAM EXTENSION TO INSIDE OF BEAM TOP SURFACE TO INSURE THAT EXTENSION IS PARALLEL WITH THE TOP OF THE BEAM.
 3. // DENOTES WELD PLACEMENT

This Print remains the property of Hendrickson. All information contained thereon is confidential. It is loaned, subject to return on demand and on express condition that it is not to be copied or used directly or indirectly for any purpose other than the purpose for which it has been loaned to you.

| | | | | | | | | | | |
|--|---|---------------------------|----------------------|-----------------------------|------------------------------------|------------------------------|---|--|--------------------------|----------------------------|
| HENDRICKSON Water Suspension Systems <small>3700 HANCOCK PLACE, S.E. CANTON, OH 44705-3900 U.S.A.</small> | <small>UNLESS OTHERWISE NOTED: DIMENSIONS ARE IN INCHES</small> | | | | <small>DRAWN BY</small> P.BILLMAN | <small>DATE</small> 11-23-04 | INTRAAX® AANT ARL KIT " L " BRACKET | <small>SCALE</small> .50=1.00 | <small>SHEET</small> D | <small>PAGE</small> 2 OF 2 |
| | <small>TOLERANCES ARE:</small> .XX ± .02 .XX ± .03 ANGULAR ± 0.5° <small>DIMENSIONS REFER TO MFG 11-23-04</small> | <small>QUANTITY</small> 2 | <small>15475</small> | <small>DATE</small> 3/24/02 | <small>CHKD BY</small> C. ANDERSON | <small>DATE</small> 8/29/02 | | <small>THE DIMENSIONS ARE GOVERNED BY THE DIMENSIONS OF THE ORIGINAL PROPERTY OF HENDRICKSON</small> | <small>DRAWN NO.</small> | D-28541 |