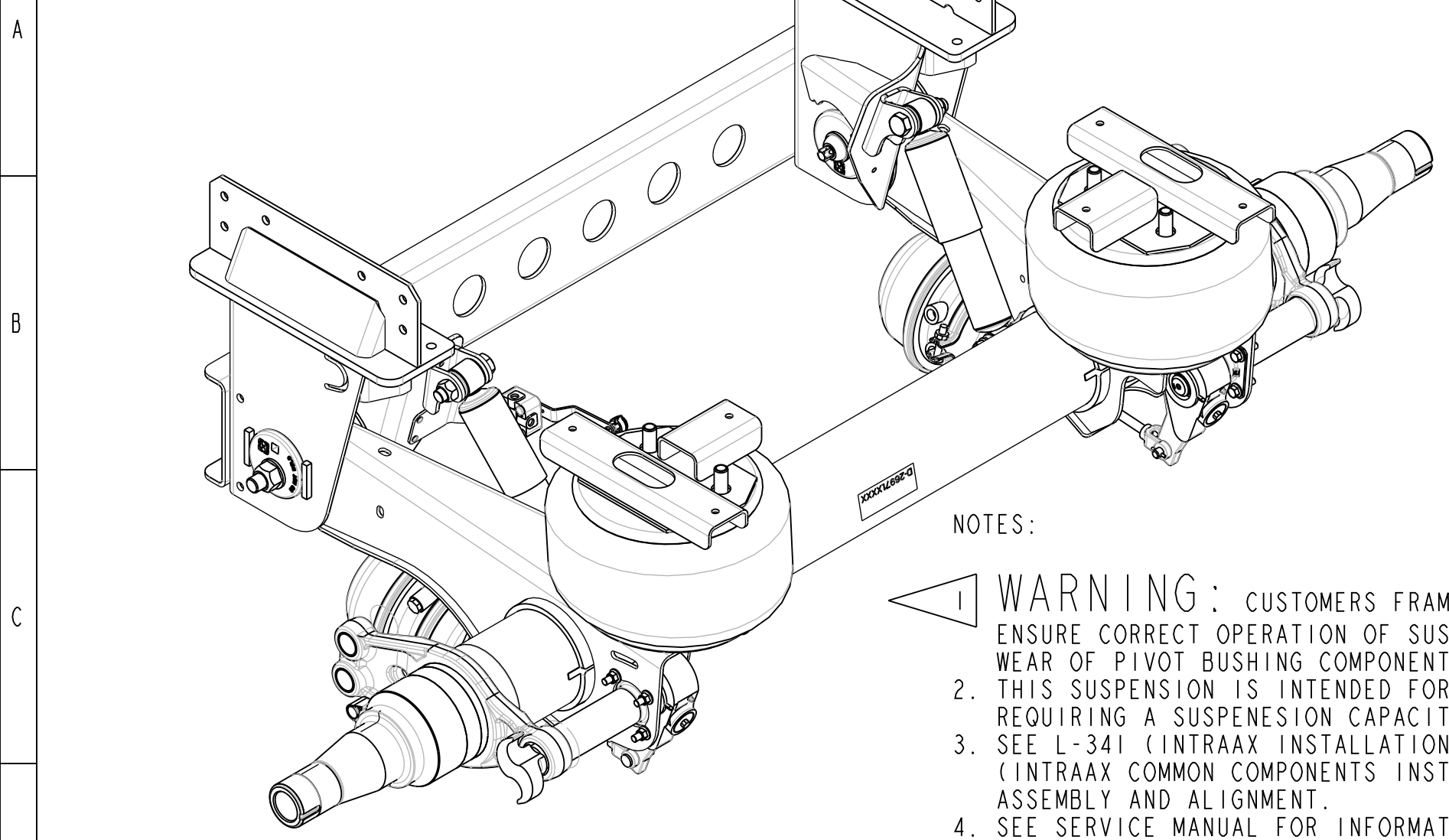


NOTE: ORIGINAL DRAWING CREATED IN PRO/ENGINEER. SOME MODELS ARE NOT OFFICIALLY RELEASED IN PRO/ENGINEER, SO GEOMETRY FOR THOSE MODELS MAY NOT REFLECT THE TRUE PART. ALL REVISIONS TO THIS DRAWING MUST BE PERFORMED ON THE PRO/ENGINEER DRAWING AND THEN CONVERTED TO THE APPLICABLE FORMAT.

6	7	8	9	10	11	12	13	14	15	16	
RIDE HT	JOUNCE	REBOUND	BUMPER CONTACT	D	E	F	G	H			
2	2	2					3	3			
BOLT-ON											
STANDARD TRAVEL HIGH CONTROL*											
13.0	2.4	2.7	1.9	.1875	10.5	24.371	10.6	15.7			

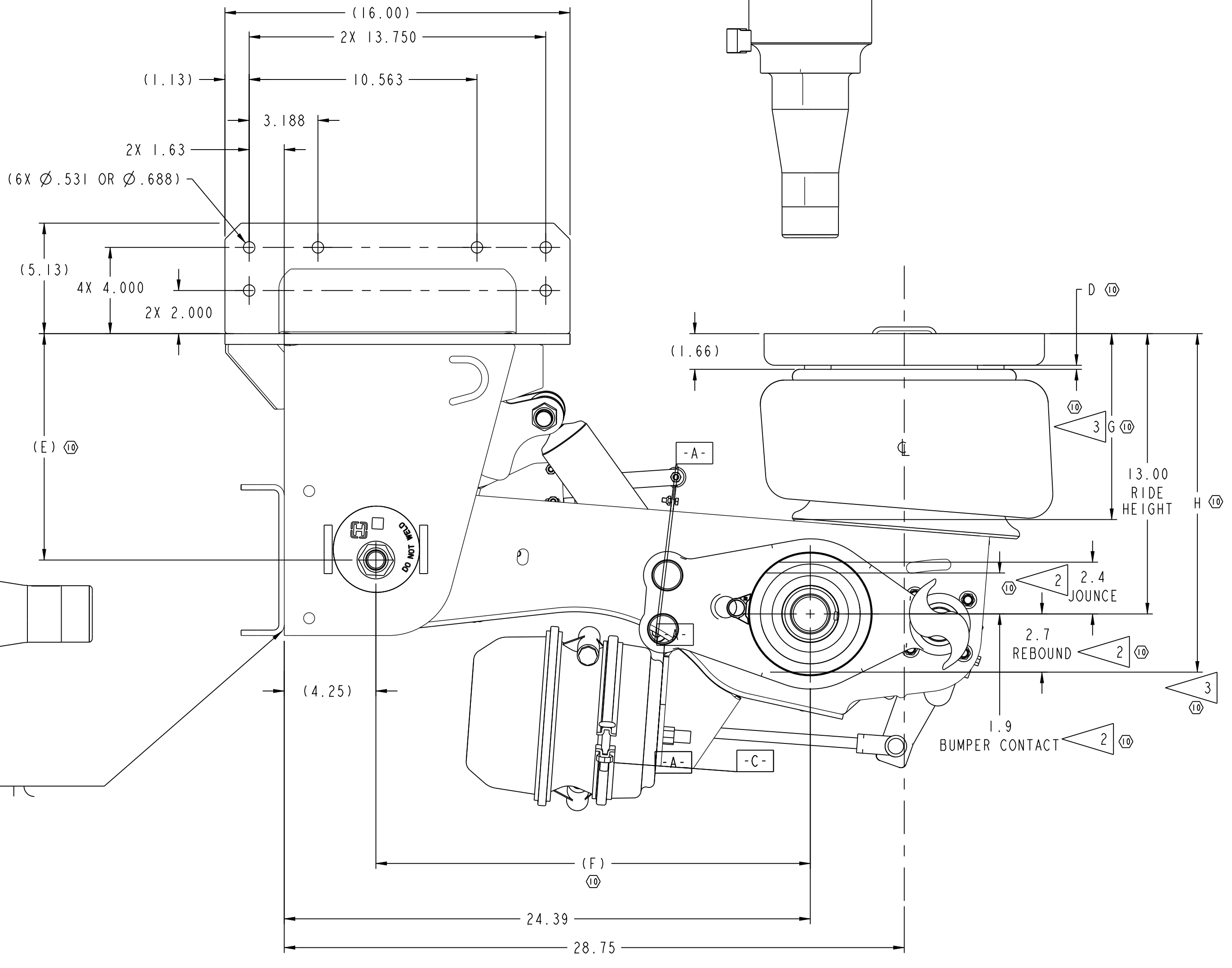
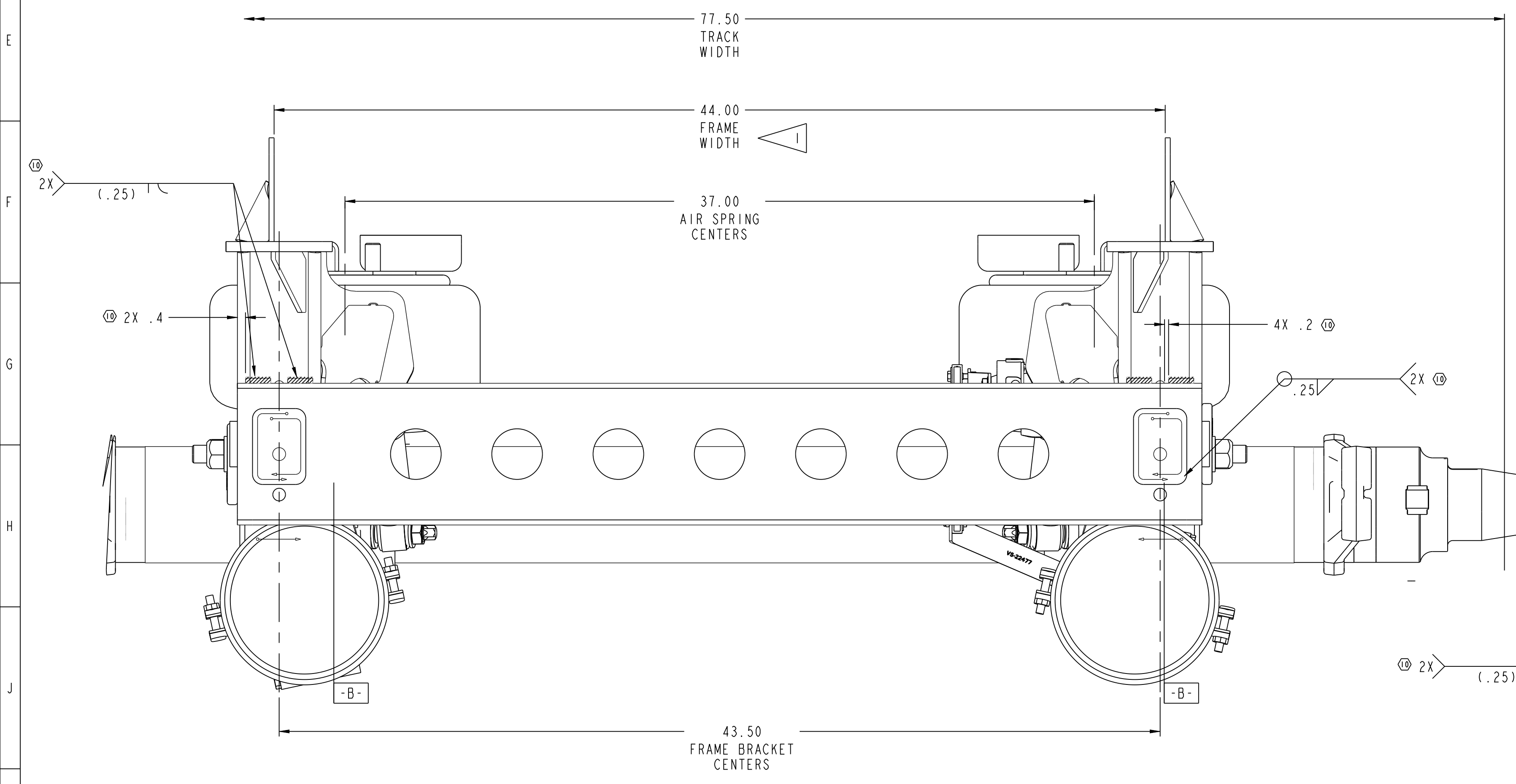
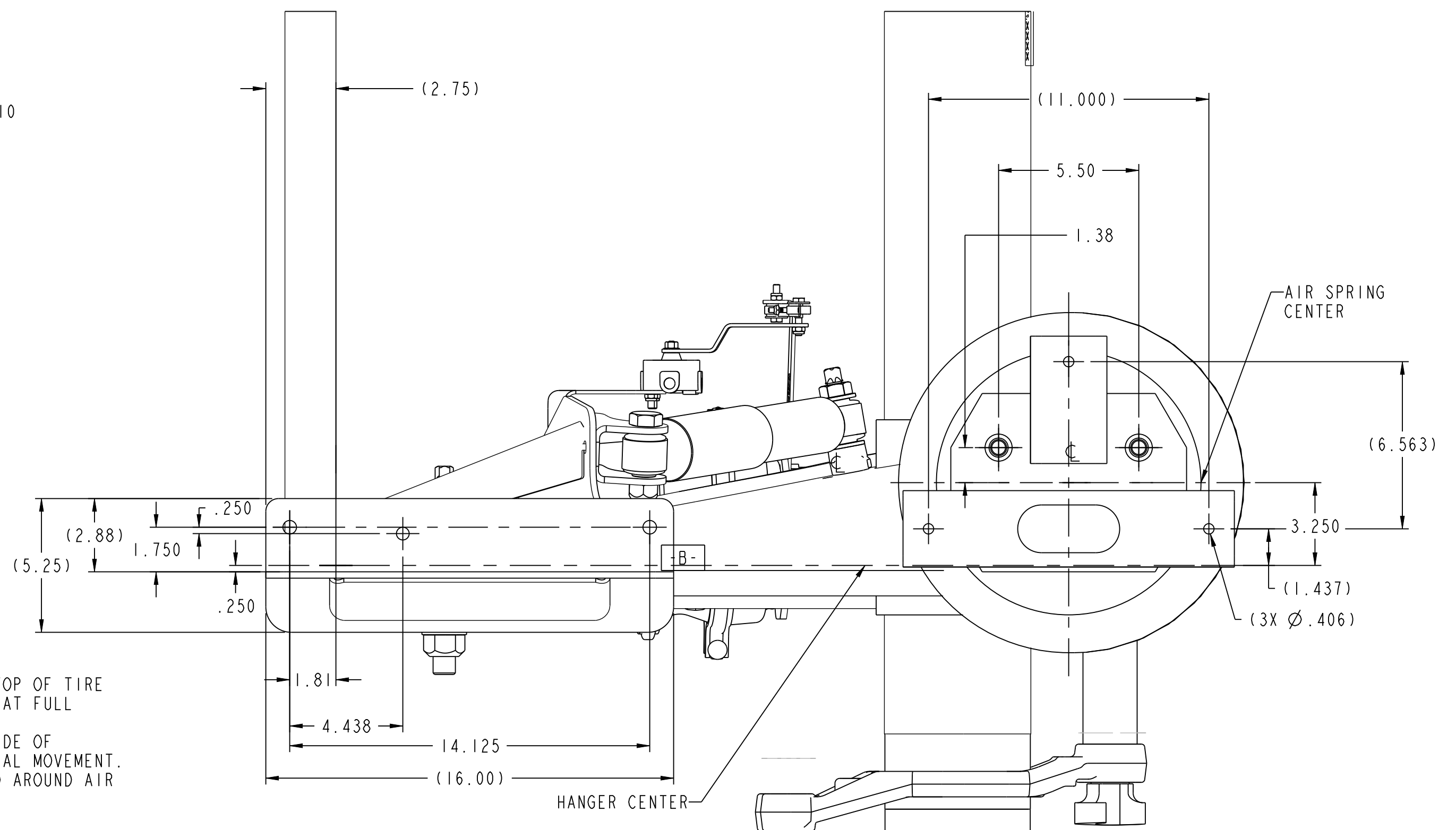
\*SEE NOTE 10



NOTES:

- WARNING:** CUSTOMERS FRAME WIDTH MUST BE WITHIN  $\pm .06$  TO ENSURE CORRECT OPERATION OF SUSPENSION OR ELSE PREMATURE WEAR OF PIVOT BUSHING COMPONENTS COULD RESULT.
- THIS SUSPENSION IS INTENDED FOR ON-HIGHWAY USE, ON TRAILERS REQUIRING A SUSPENSION CAPACITY OF 23,000 POUNDS.
- SEE L-341 (INTRAAX INSTALLATION INSTRUCTIONS) AND DRAWING D-25266 (INTRAAX COMMON COMPONENTS INSTALLATIONS) FOR INFORMATION ON ASSEMBLY AND ALIGNMENT.
- SEE SERVICE MANUAL FOR INFORMATION CONCERNING MAINTENANCE PROCEDURE.
- MANUFACTURED UNDER ONE OR MORE OF THE FOLLOWING U.S. PATENT NOS.: 4,166,640; 5,366,237; 6,213,507. OTHER PATENTS PENDING.
- SEE L-575 FOR HEIGHT CONTROL KIT OPTIONS.
- DO NOT WELD ON AXLE TUBE
- ////// PATTERN DENOTES WELD PLACEMENT. (C) DENOTES WELD DIRECTION.
- "G" = RIDE HEIGHT - JOUNCE. (C)
- "H" = RIDE HEIGHT + REBOUND. (C)
- AIR SPRING MOUNTING PLATE OPTION = STANDARD

CLEARANCE SPECIFICATIONS:  
a) 1.0 INCH MINIMUM CLEARANCE REQUIRED BETWEEN TOP OF TIRE AND BOTTOM OF TRAILER STRUCTURE WHEN AXLE IS AT FULL JOUNCE.  
b) 2.0 INCHES OF CLEARANCE REQUIRED BETWEEN INSIDE OF TIRE AND TRAILER STRUCTURE FOR TIRE AND LATERAL MOVEMENT.  
c) .75 INCH MINIMUM CLEARANCE MUST BE MAINTAINED AROUND AIR SPRING WHEN IT IS AT MAXIMUM DIAMETER.



This print remains the property of Hendrickson. All information contained hereon is confidential. It is loaned, subject to return on demand, and on the express condition that it is not to be copied or used directly or indirectly for any purpose other than the purpose for which it has been loaned to you.

**HENDRICKSON**  
TRAILER COMMERCIAL VEHICLE SYSTEMS  
2070 INDUSTRIAL PLACE S.E. CANTON, OH 44701-2600 U.S.A.

UNLESS OTHERWISE NOTED:				10	32906	DAR	7-30-19	DRAWN BY:	M. ZAKES	DATE:	05-Feb-03
TOLERANCES ARE:				9	17553	SEG	3-13-09	CHECKED BY:	C. ANDERSON	THIS DRAWING IS THE CONFIDENTIAL PROPERTY OF HENDRICKSON	
XX: $\pm .06$				8	16744	CDR	7/7/08	APPROVED BY:	J. RAMSEY	SCALE:	1:4
XXX: $\pm .030$				7	15633	LMK	5-11-07	REV. ECN NO. BY DATE	PAGE: 1 OF 3		
ANGULAR: $\pm 0.5^\circ$										SIZE:	D
DIMENSIONS ADHERE TO ANSI Y14.5M-1982										DRAWING NUMBER:	D-27367

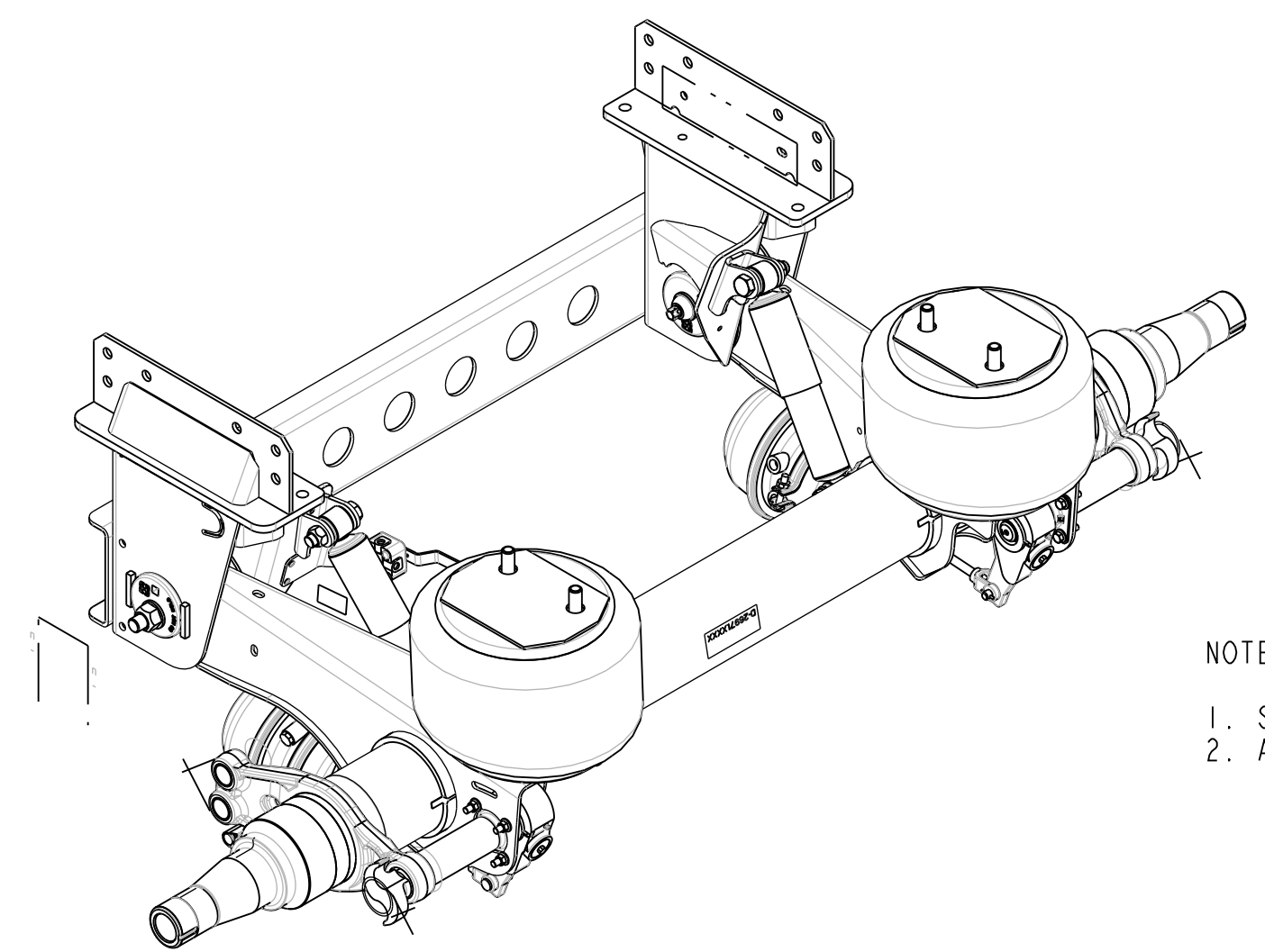
AANT BOLT-ON,  
SIDE MOUNT, WINGLESS ASSEMBLY

NOTE: ORIGINAL DRAWING CREATED IN CREO  
ALL REVISIONS TO THIS DRAWING MUST BE  
PERFORMED ON THE CREO DRAWING AND  
THEN CONVERTED TO THE APPLICABLE FORMAT.

RIDE HT	JOUNCE	REBOUND	BUMPER CONTACT	D	E	F	G	H
BOLT-ON								
STANDARD TRAVEL HIGH CONTROL*								
13.0	3.7	2.7	3.1	.1875	10.5	24.371	9.3	15.7
13.5	2.7	6.5	2.1	.250	10.5	24.039	10.8	20.0
14.0	3.2	6.0	2.6	.250	10.5	24.039	10.8	20.0
15.0	3.1	5.0	2.6	.250	10.5	23.602	11.9	20.0
STANDARD TRAVEL NO HIGH CONTROL								
16.0	3.5	5.4	2.9	.250	10.5	23.289	12.5	21.4
17.0	3.6	4.4	3.0	.250	10.5	23.289	13.4	21.4

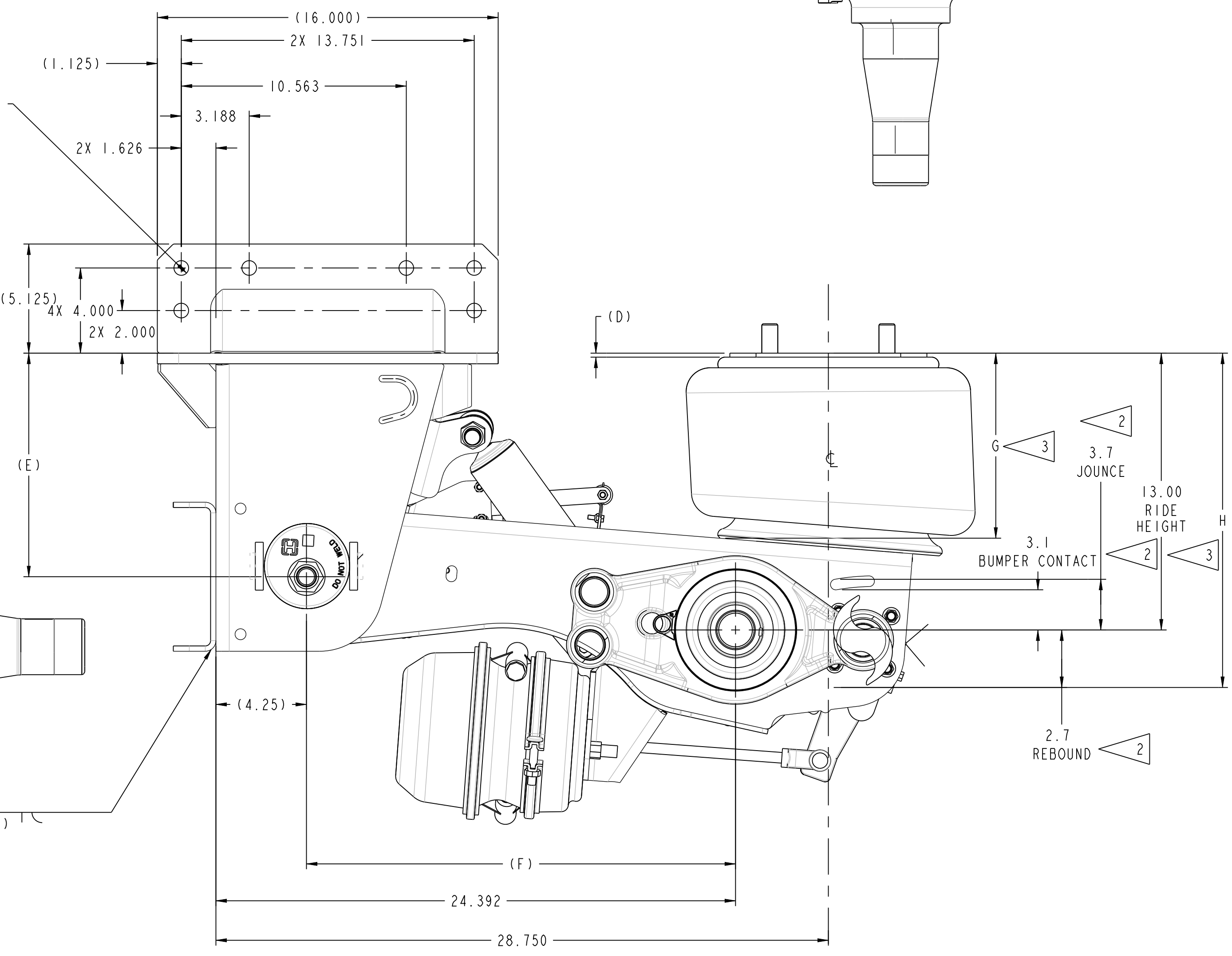
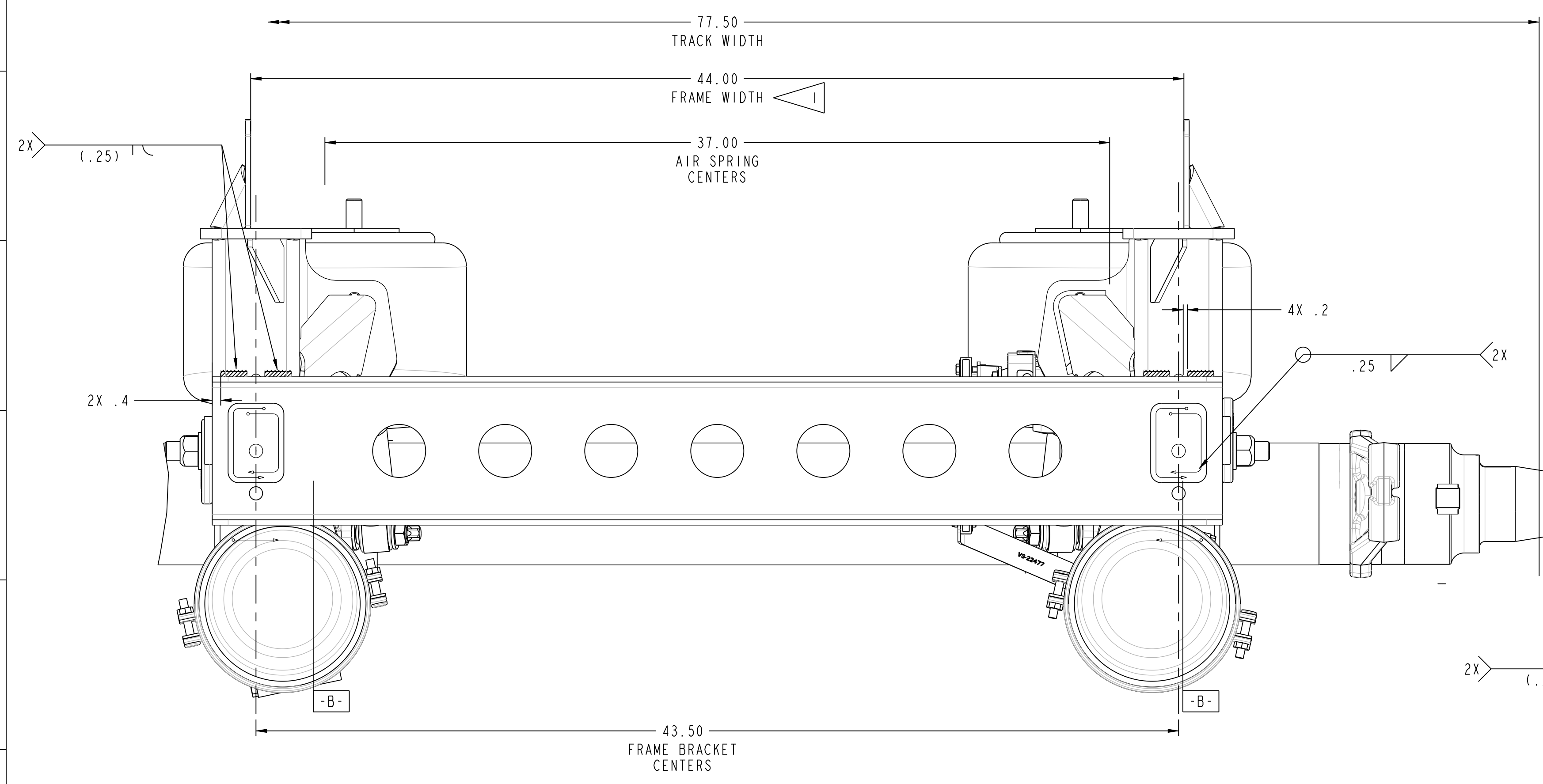
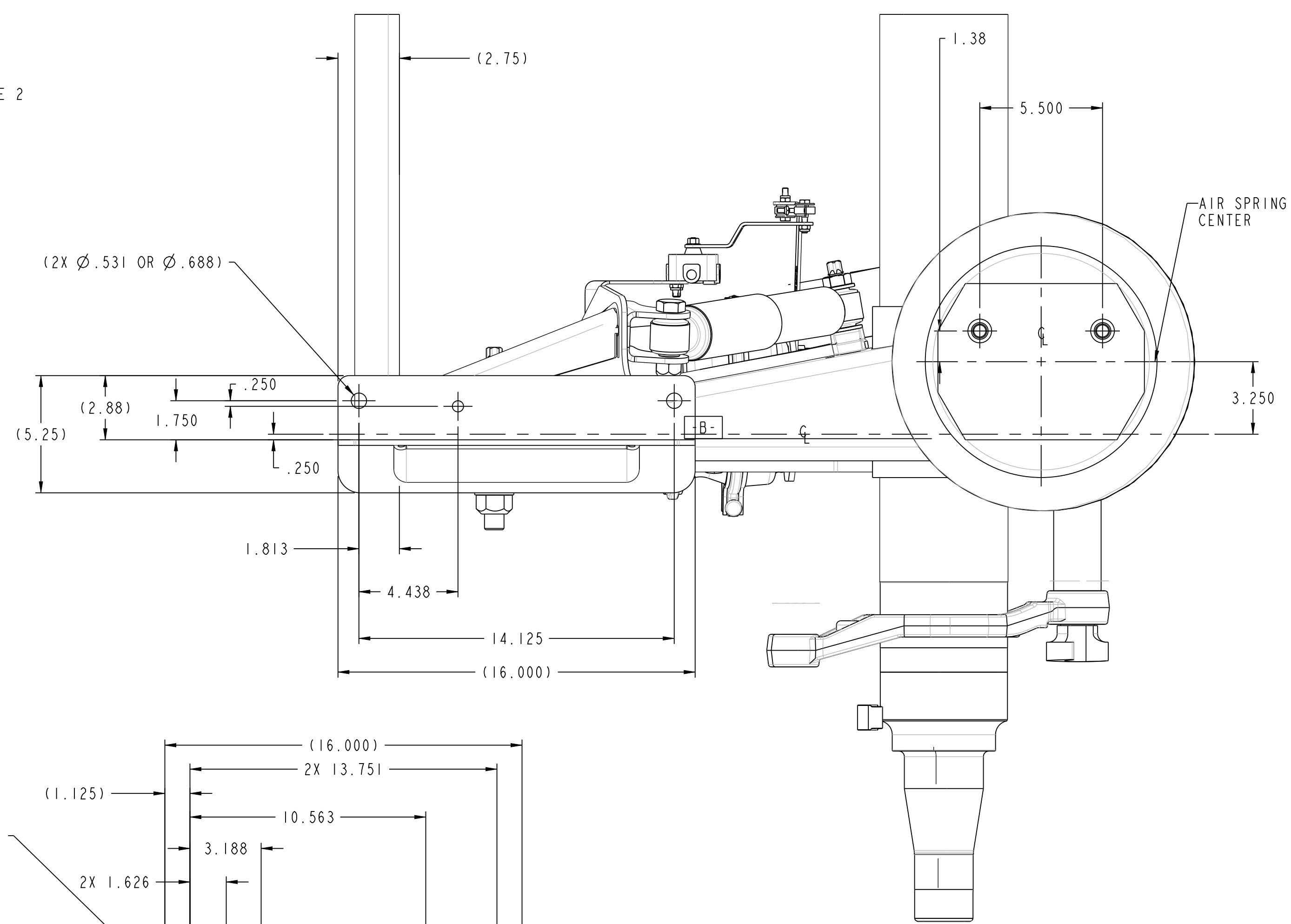
\*SEE NOTE 2

A  
B  
C  
D  
E  
F  
G  
H  
J  
K



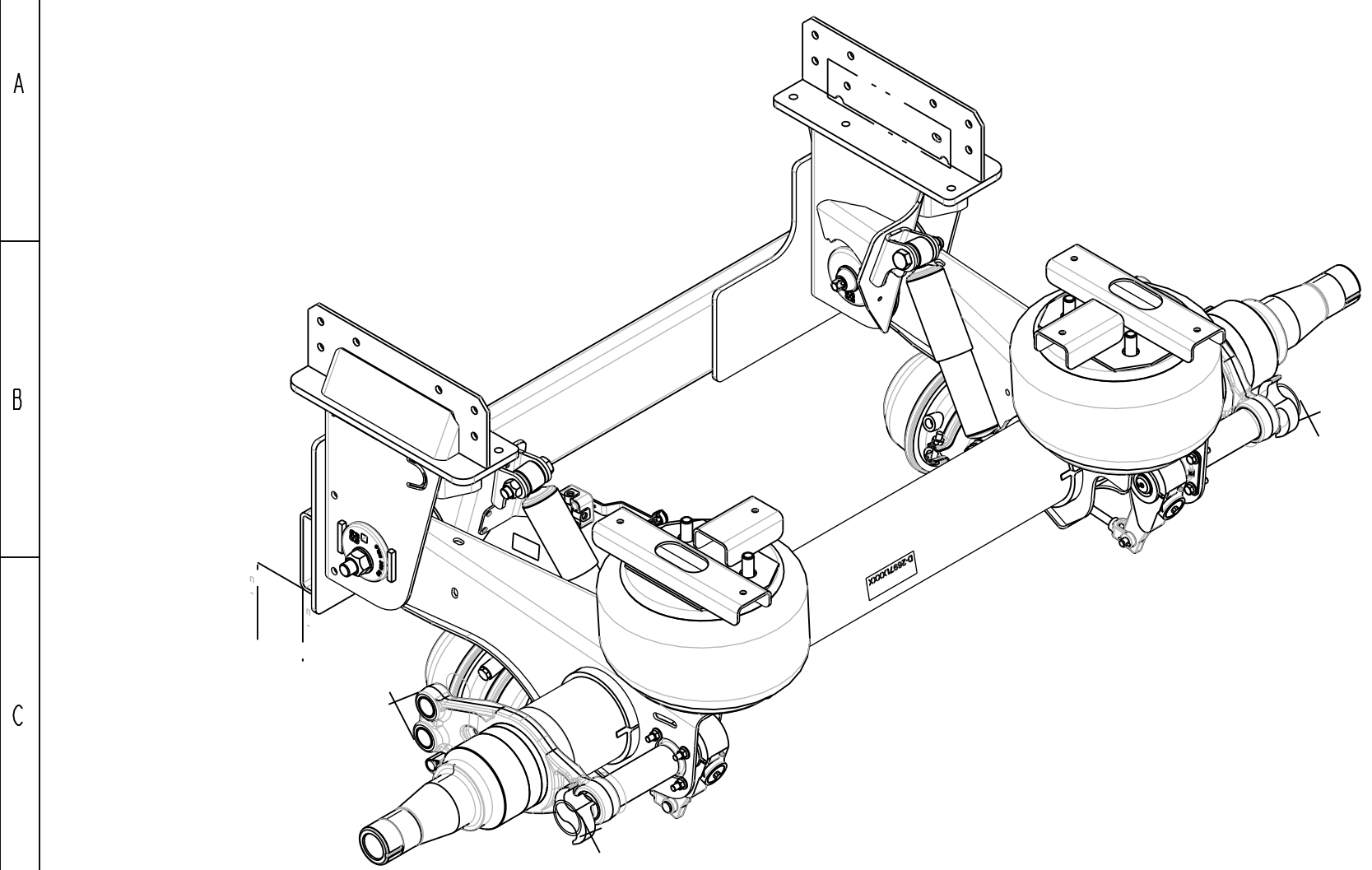
SCALE 1:10

- NOTES:  
1. SEE PAGE 1  
2. AIR SPRING MOUNTING PLATE OPTION = NONE



This print remains the property of Hendrickson. All information contained hereon is confidential. It is loaned, subject to return on demand, and on the express condition that it is not to be copied or used directly or indirectly for any purpose other than the purpose for which it has been loaned to you.

NOTE: ORIGINAL DRAWING CREATED IN PRO/ENGINEER  
ALL REVISIONS TO THIS DRAWING MUST BE  
PERFORMED ON THE PRO/ENGINEER DRAWING AND  
THEN CONVERTED TO THE APPLICABLE FORMAT.

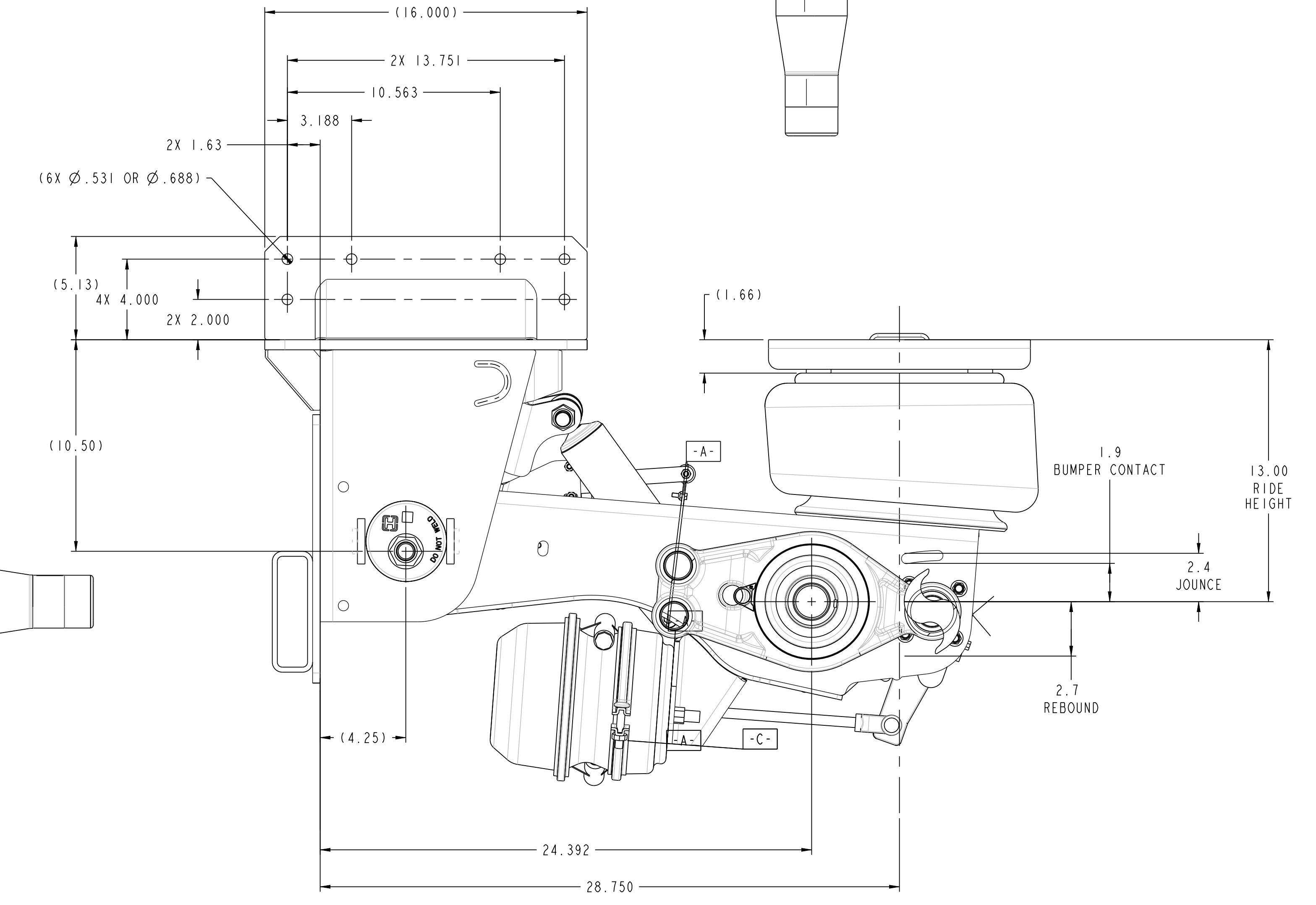
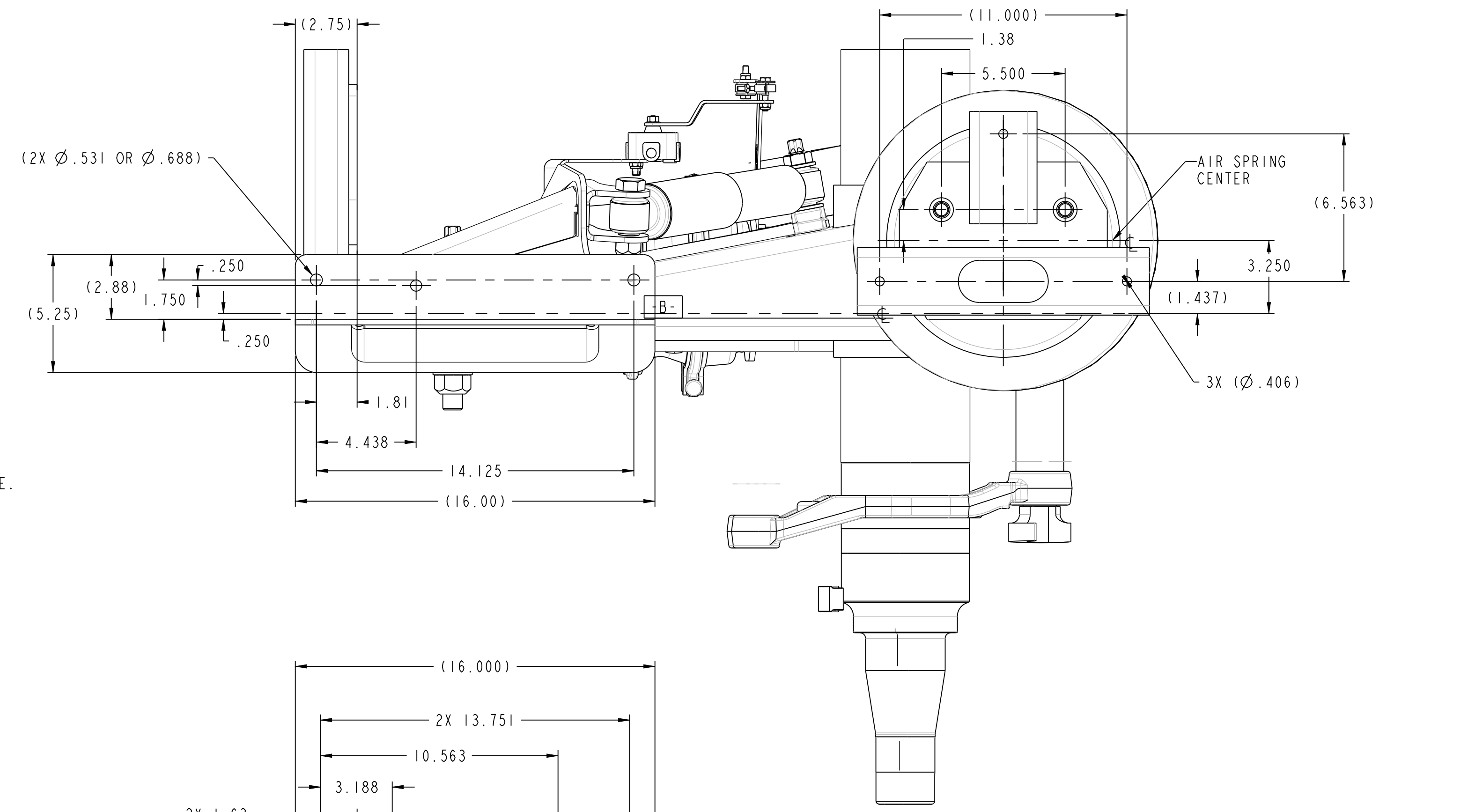
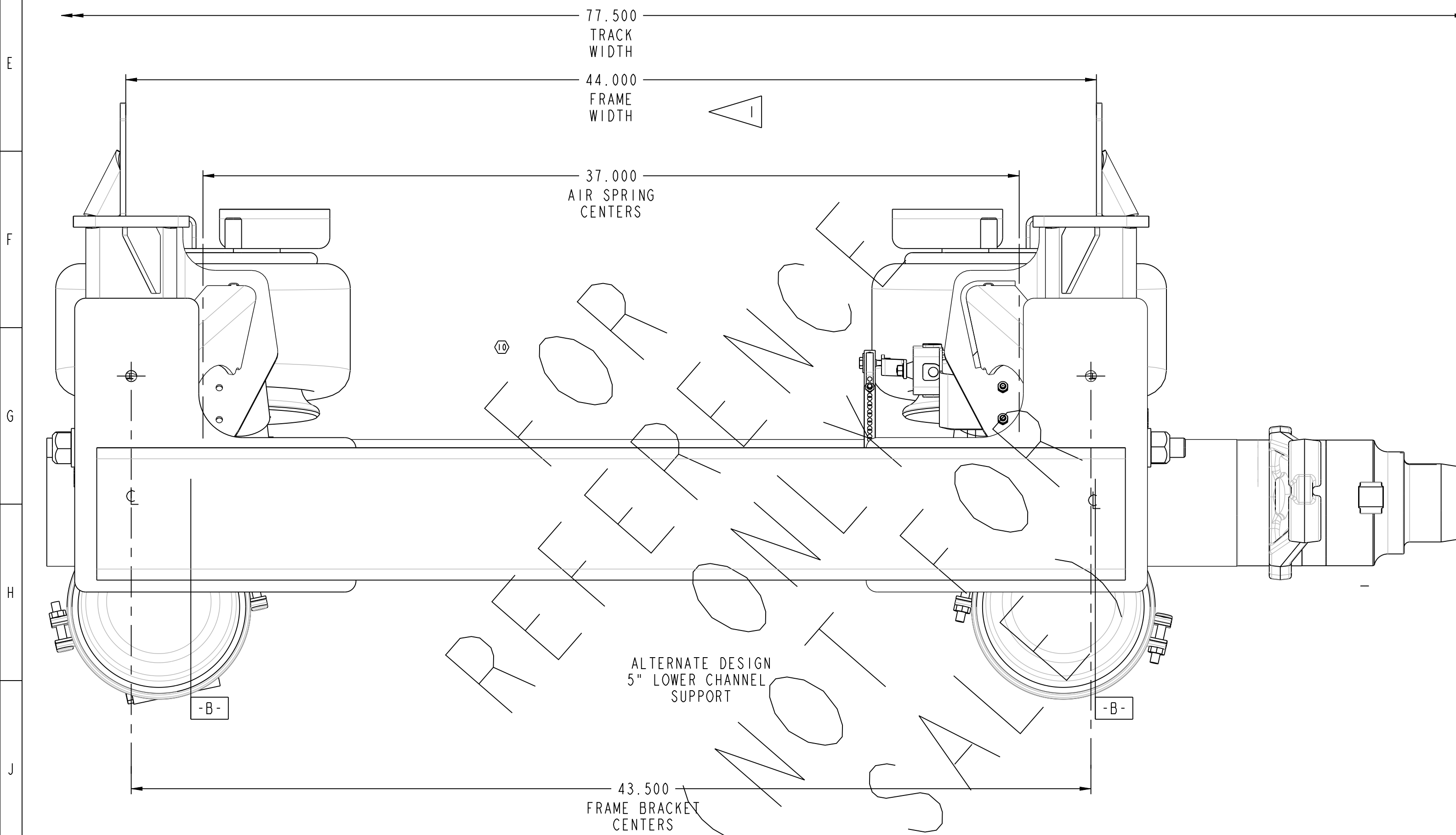


SCALE 1:10

NOTES:

- WARNING:** CUSTOMERS FRAME WIDTH MUST BE WITHIN  $\pm .06$  TO ENSURE CORRECT OPERATION OF SUSPENSION OR ELSE PREMATURE WEAR OF PIVOT BUSHING COMPONENTS COULD RESULT.
- THIS SUSPENSION IS INTENDED FOR ON-HIGHWAY USE, ON TRAILERS REQUIRING A SUSPENSION CAPACITY OF 23,000 POUNDS.
  - SEE L-341 (INTRAAX INSTALLATION INSTRUCTIONS) AND DRAWING D-25266 (INTRAAX COMMON COMPONENTS INSTALLATIONS) FOR INFORMATION ON ASSEMBLY AND ALIGNMENT.
  - SEE SERVICE MANUAL FOR INFORMATION CONCERNING MAINTENANCE PROCEDURE.
  - MANUFACTURED UNDER ONE OR MORE OF THE FOLLOWING U.S. PATENT NOS.: 4,166,640; 5,366,237; 6,213,507. OTHER PATENTS PENDING.
  - SEE L-575 FOR HEIGHT CONTROL KIT OPTIONS.
  - DO NOT WELD ON AXLE TUBE.

- CLEARANCE SPECIFICATIONS:**
- 1.0 INCH MINIMUM CLEARANCE REQUIRED BETWEEN TOP OF TIRE AND BOTTOM OF TRAILER STRUCTURE WHEN AXLE IS AT FULL JOUNCE.
  - 2.0 INCHES OF CLEARANCE REQUIRED BETWEEN INSIDE OF TIRE AND TRAILER STRUCTURE FOR TIRE AND LATERAL MOVEMENT.
  - .75 INCH MINIMUM CLEARANCE MUST BE MAINTAINED AROUND AIR SPRING WHEN IT IS AT MAXIMUM DIAMETER.



This print remains the property of Hendrickson. All information contained hereon is confidential. It is loaned, subject to return on demand, and on the express condition that it is not to be copied or used directly or indirectly for any purpose other than the purpose for which it has been loaned to you.