

H TECHNICAL BULLETIN

VANTRAAX® HEIGHT CONTROL VALVE (HCV)

SUBJECT: Linkage Installation Tips

LIT NO: T89001

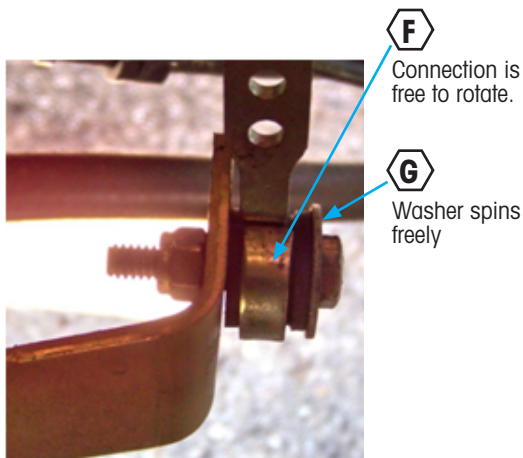
DATE: March 2012

This bulletin describes the proper Height Control Valve (HCV) linkage installation for the standard height control valve on VANTRAAX® slider suspensions. Refer to *L668 Non-Delay Height Control Valve Installation Procedures* for complete installation instructions, including instructions for DST®, Integral Dump, INTRAAX®, etc.

The HCV linkage connects the HCV arm to the suspension beam. For best performance, the **linkage should be installed vertically and must have freedom of movement** at top and bottom connections. The correct installation of the linkage is an important factor for extending the life of the components and for ensuring proper operation of the suspension:

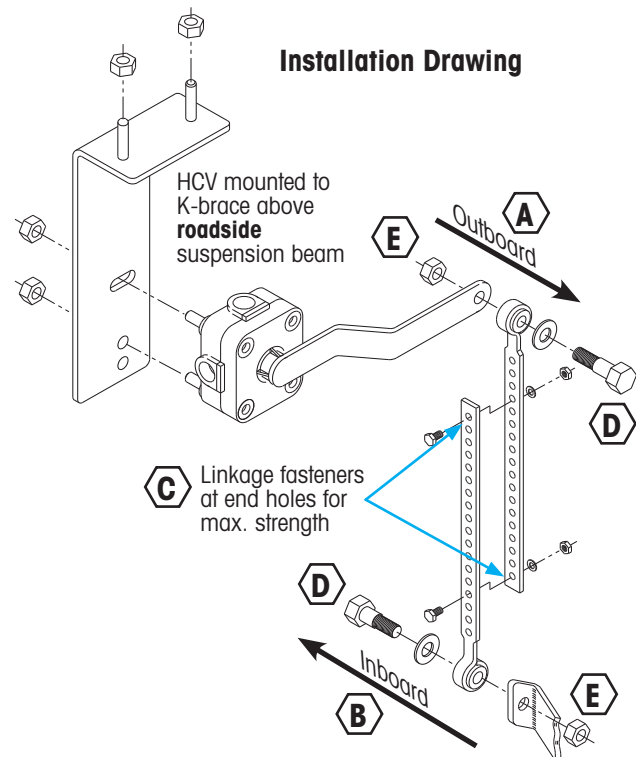
TIP	NOTES
<ul style="list-style-type: none"> • Correctly locate the link 	<ul style="list-style-type: none"> A. Outboard side of HCV arm B. Inboard side of lower link bracket C. Insert linkage fasteners in last hole
<ul style="list-style-type: none"> • Install link bolts in the correct orientation 	<ul style="list-style-type: none"> D. Bolt head and flat washer on link side E. Nut against lower bracket or HCV arm
<ul style="list-style-type: none"> • DO NOT OVER TIGHTEN THE LINK BOLTS 	<ul style="list-style-type: none"> F. The link connection must be allowed to pivot freely G. The washer spins freely
<ul style="list-style-type: none"> • Use only Genuine Hendrickson HCV and linkage mounting hardware 	

Link Bolt Connection Example



← Continued on back

Installation Drawing



Correctly installed linkage



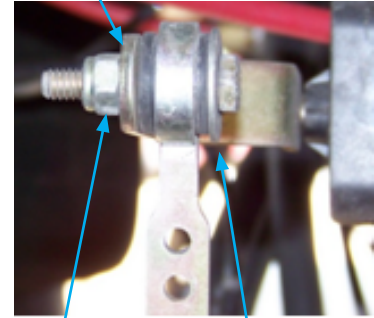
Linkage positioned vertically.

Common mistakes when mounting the HCV linkage include:

Linkage mounted on wrong side of HCV lever
(bolt in wrong direction)

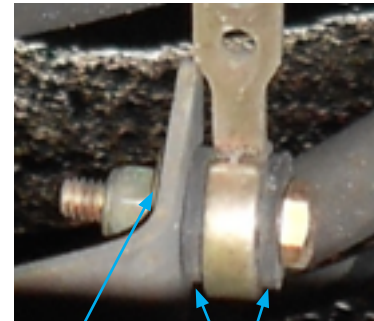


Linkage positioned non-vertical.
Do not add lean or twist to linkage.



Washer must be free to spin

Lock nut must not compress bushing and connection.



Washer should be at bolt head

Connection is too tight and restricted.
Rubber bushing is compressed.

www.hendrickson-intl.com



Hendrickson Canada
250 Chrysler Drive, Unit #3
Brampton, ON Canada L6S 6B6
905.789.1030
Fax 905.789.1033

Trailer Commercial Vehicle Systems
2070 Industrial Place SE
Canton, OH 44707-2641 USA

866.RIDEAIR (743.3247)
330.489.0045
Fax 800.696.4416

Hendrickson Mexicana
Av. Industria Automotriz #200
Parque Industrial Silva Aeropuerto
Apodaca, N.L., México C.P. 66600
+52 (81) 8288 1300
Fax +52 (81) 8288 1301