

H PARTS LIST

INTRAAX® AANT 23K

LIT NO: L1057

DATE: October 2019

REVISION: H





SUSPENSION ASSEMBLIES

Frame Bracket Assembly

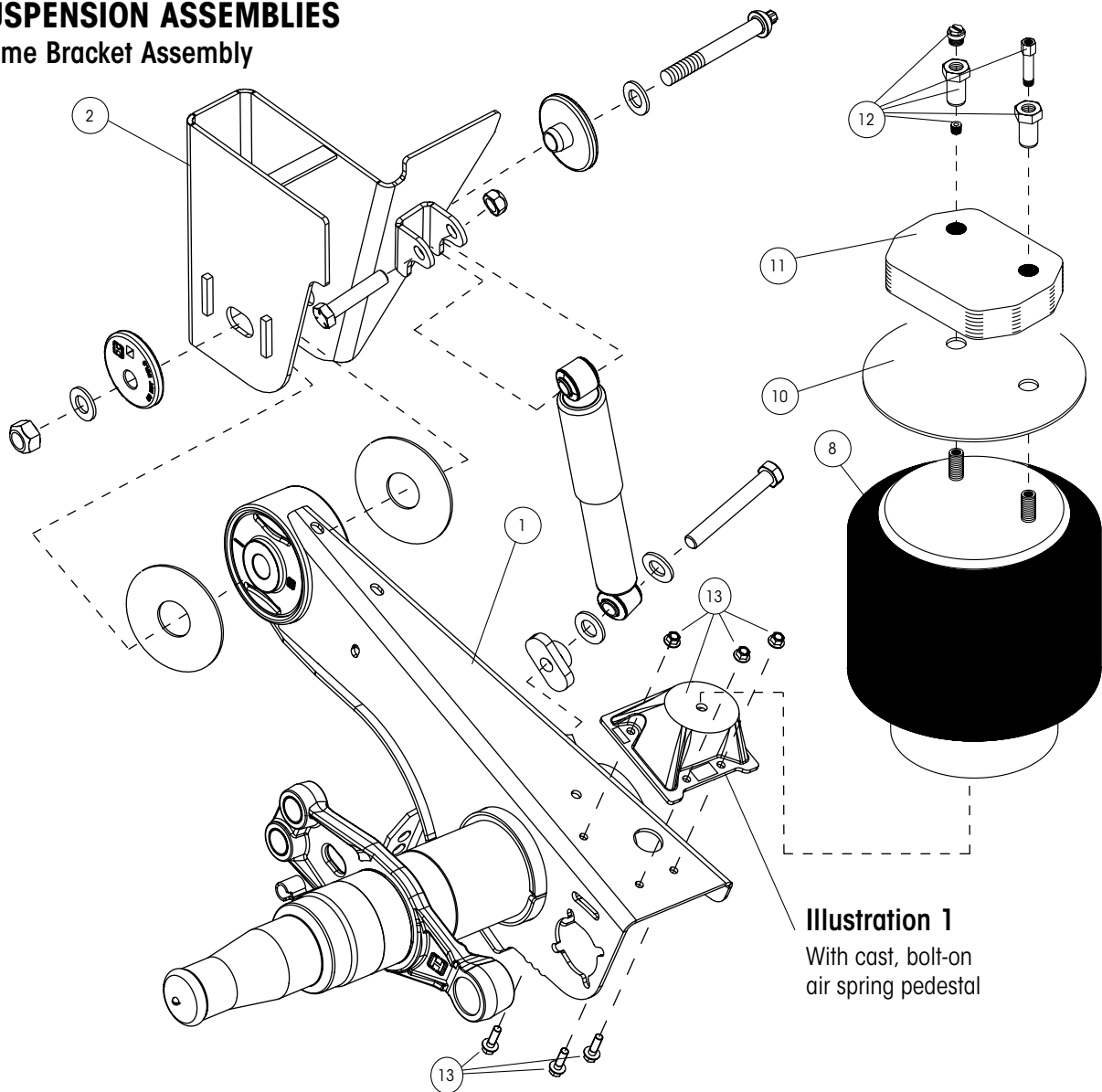
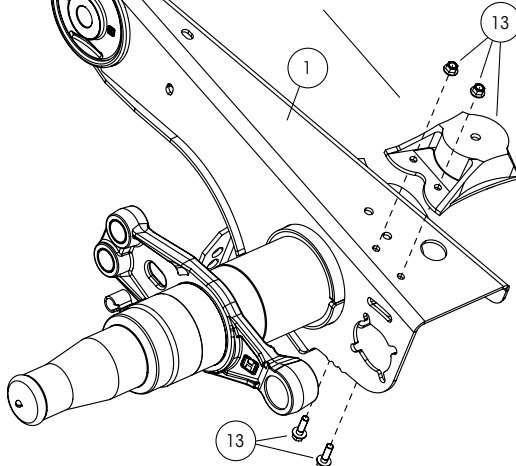


Illustration 1
With cast, bolt-on
air spring pedestal

Manufactured Late August 2002 Through 2008

Illustration 2

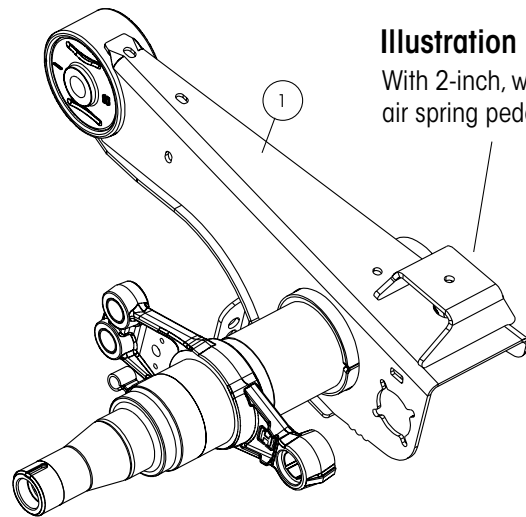
With cast, bolt-on
air spring pedestal



Manufactured 2001 Through 2002

Illustration 3

With 2-inch, weld-on
air spring pedestal





INTRAAX® AANT 23K PARTS LIST

ITEM	DESCRIPTION	PART NO.	QTY.	NOTE
1	AXLE / BEAM WELDMENT	HTRAAX.XXX		Contact Hendrickson for assistance
2	FRAME BRACKET¹			See L1266 Frame Bracket Parts List
3	BOLT-ON C-CHANNEL KIT² (Not Shown)			
	71.5" track	S-31901-1C		Standard / black primer; includes c-channel, 2 struts and strut bolt kit
	77.5" track	S-31901-2C		Standard / black primer; includes c-channel, 2 struts and strut bolt kit
4	STRUT³ (Not Shown)	B-30591	2	
5	C-CHANNEL BOLT KIT (Not Shown)	S-29822	1	Includes 2 screws and 2 prevailing torque nuts
6	STRUT BOLT KIT (Not Shown)	S-30720-1	1	6 Screws and 6 prevailing torque nuts
7	WELD-ON C-CHANNEL (Not Shown)			
	71.5" track	C-27375-1	1	7" C-channel, wingless
	75.5" track	C-27375-2	1	7" C-channel, wingless
	77.5" track	C-27375	1	7" C-channel, wingless
8	AIR SPRING			
	Standard pressure	S-26773	2	12" to 13" ride heights
	Standard pressure	S-21800	2	13.5" to 19" ride heights
	Low pressure	S-20901	2	13.5" to 19" ride heights
9	ZMD® TECHNOLOGY			See page 6
10	AIR SPRING MOUNTING PLATE³			
	Weld-on	S-20905	2	12" - 19" ride heights; standard air spring mounting plate
	Bolt-on ³	B-21145	2	13.5" - 19" ride heights; standard air spring mounting plate
		B-21715	2	13.5" - 19" ride heights; pattern 1 air spring mounting plate
		B-22390	2	13.5" - 19" ride heights; pattern 2 air spring mounting plate
		B-27264	2	13.5" - 19" ride heights; pattern 3 air spring mounting plate
11	AIR SPRING SPACER⁴			Standard travel
	17" ride height	B-22510-1	2	
	16" and 18" ride heights	B-22510-2	2	Only on ZMD air spring and weld-on frame bracket for 16" ride height
	19" ride height	B-22510-3	2	
12	AIR SPRING MOUNTING KIT⁵			(1) per air spring
	12" ride height	S-22907 / 2	2	Standard frame thickness
	13.5" - 16" ride heights	S-22619 / 2	2	Standard frame thickness
	17" ride height	S-22630 / 2	2	Standard frame thickness
	18" ride height	S-22631 / 2	2	Standard frame thickness
	19" ride height	S-22632 / 2	2	Standard frame thickness
13	AIR SPRING PEDESTAL KITS			Includes 2 pedestals, 6 nuts and 6 screws
	13.5" - 14" ride heights	S-27447-1	2	
	15" ride height	S-27447-3	2	
	16" - 19" ride heights	S-27447-4	2	Only on standard air springs for 16" ride height
	16" ride height	S-27447-2	2	Only on ZMD air spring and weld-on frame bracket

1. Options exist based on frame attachment, frame bracket style bolt hole pattern and connection. Contact Hendrickson for assistance or refer to L1266 Frame Bracket Parts List.

2. Struts are only optional for bolt-on frame brackets. Other options exist for galvanized or different track widths.

3. Please see INTRAAX® bolt-on mounting drawing, D-26651, for assistance in pattern selection. This drawing can be found in the literature section of the Hendrickson website (www.hendrickson-intl.com).

4. Air spring spacer standard options listed. Other options exist. Please contact Hendrickson for assistance.

5. Kits listed are for units with standard travel, standard air spring hardware and standard air spring mounting plate. Components may vary for limited rebound, limited jounce, thick frame or steel spacer models.

Note: Identification tag can be found on the inside of the curbside beam

SUSPENSION ASSEMBLIES

Frame Bracket Assembly

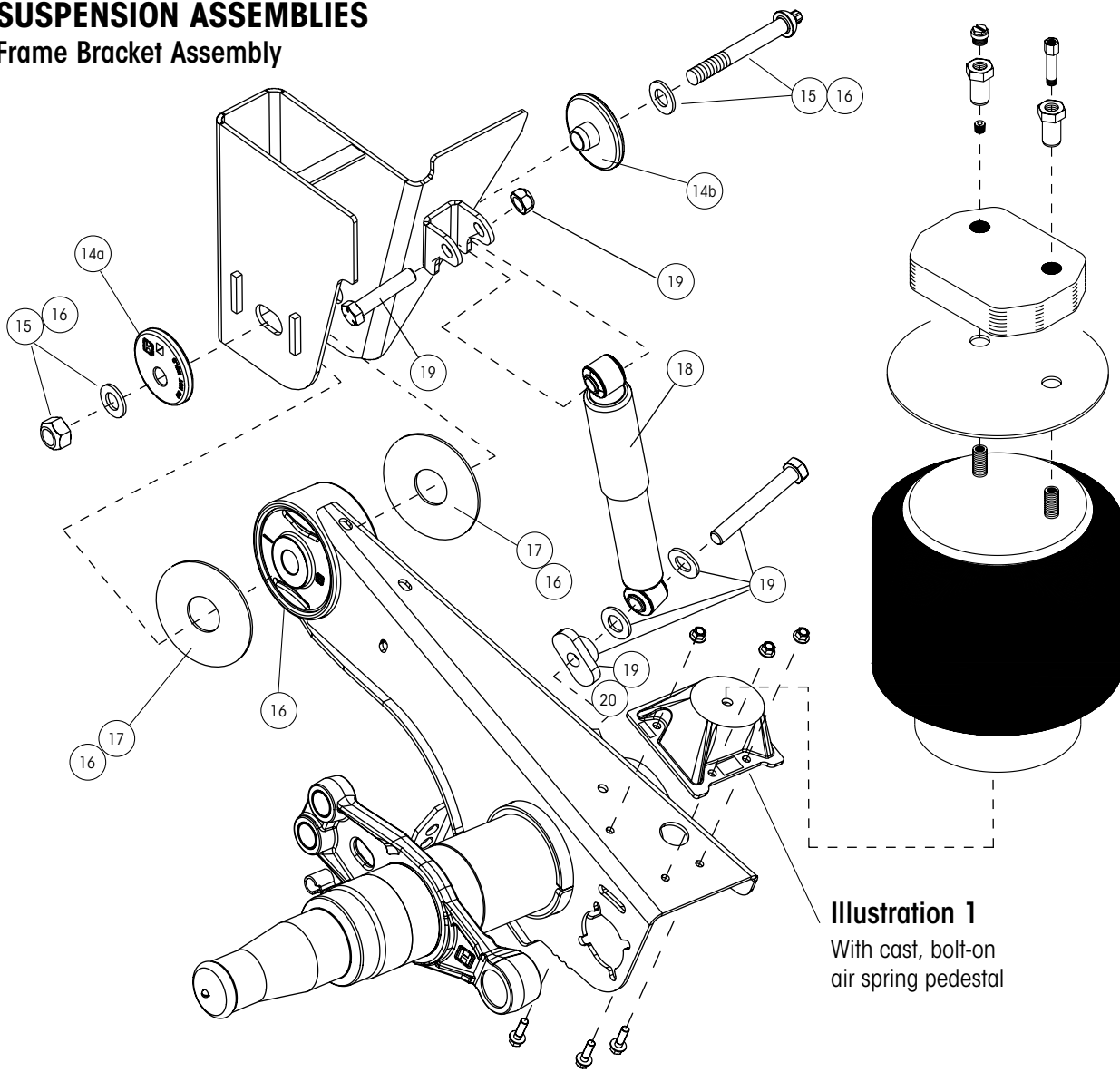
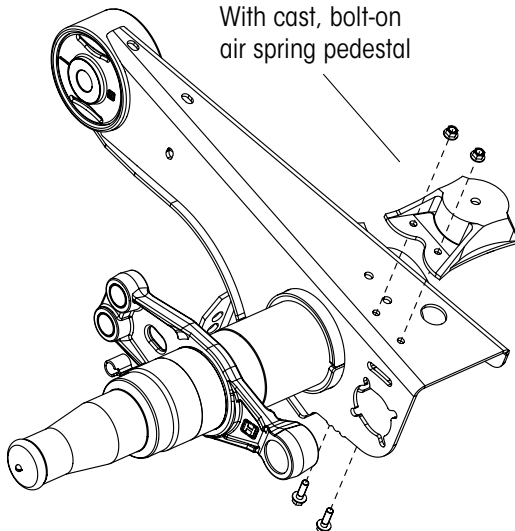


Illustration 1
With cast, bolt-on
air spring pedestal

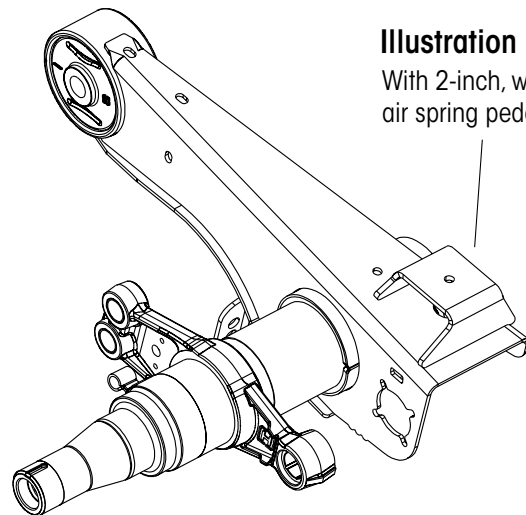
Manufactured Late August 2002 Through 2008

Illustration 2
With cast, bolt-on
air spring pedestal



Manufactured 2001 Through 2002

Illustration 3
With 2-inch, weld-on
air spring pedestal





INTRAAX® AANT 23K PARTS LIST

ITEM	DESCRIPTION	PART NO.	QTY.	NOTE
14	ALIGNMENT COLLARS			
	14a Eccentric	S-20925	2	Pivot bolt hole is offset from the center of collar
	14b Concentric	S-20924	2	Pivot bolt hole is in the center of collar
15	QUIK-ALIGN® PIVOT BOLT KIT⁷	S-24705	2	Includes 7" shear-type bolt, nut and washers
16	TRI-FUNCTIONAL® BUSHING KIT^{6,7}	S-26321	1	Includes (2) bushings, pivot bolt kits (Item 15), bushing tube spacers and lube
17	BUSHING TUBE SPACERS	S-26807	4	
18	FRONT SHOCK ABSORBER			See L1287 Shock Parts List
19	FRONT SHOCK BOLT KIT	S-24049/2	2	
20	SHOCK SPACER	S-27196	1	
21	SHOCK STRAP KIT			See L1287 Shock Parts List

6. Bushing tool, S-24736, is required to correctly rebush the suspension.

7. Best installed with Hendrickson's E-20 socket S-24536 (1-inch drive sleeveless), S-25119 (1-inch drive sleeve) or S-24303 (3/4-inch drive sleeveless).

Note: Identification tag can be found on the inside of the curbside beam



ZMD® ZERO MAINTENANCE DAMPING® COMPONENTS (Not Shown)

ITEM	DESCRIPTION	PART NO.	QTY.	NOTE
22	ZMD AIR SPRING			14" - 17" ride heights only, std. travel
	Plastic piston	S-39400	2	
	Steel piston	S-35510	2	
23	ZMD DOWNSTOP			
	14" and 16" ride heights	S-33669	2	Only on bolt-on frame brackets for 16" ride height
	15" - 17" ride heights	S-33669-3	2	Only on weld-on frame brackets for 16" ride height
24	ZMD DOWNSTOP BOLT KIT	S-24049/2	2	Includes shear bolts, spacers, washers, hex bolt and hex nut
25	ZMD SHOCK CLEVIS BOLT KIT⁸	S-37219	2	Includes 2 tapping screws and 2 hex nuts
26	ZMD RETROFIT KIT			Includes 2 ZMD air springs, 2 downstop assemblies and hardware
	Winged			
	14" ride height	S-39350-1	1	
	15" ride height	S-39350-3	1	
	16" ride height			
	Bolt-on	S-39350-1	1	
	Weld-on std. frame	S-39350-5	1	
	Weld-on thick frame	S-39350-7	1	
	17" ride height	S-39350-3	1	
	Wingless			
	14" ride height	S-39350-2	1	
	15" ride height	S-39350-4	1	
	16" ride height			
	Bolt-on	S-39350-2	1	
	Weld-on std. frame	S-39350-6	1	
	Weld-on thick frame	S-39350-8	1	
	17" ride height	S-39350-4	1	
27	AIR SPRING SPACER	B-22510-2	2	Only on weld-on frame brackets for 16" ride height
28	AIR SPRING PEDESTAL KIT	S-27447-2	2	Only on weld-on frame brackets for 16" ride height

8. Required only on winged frame brackets equipped with ZMD technology.

Note: Identification tag can be found on the inside of the curbside beam



NOTES:

A series of horizontal lines for taking notes, starting below the 'NOTES:' label and extending to the bottom of the page.

*Actual product performance may vary depending upon vehicle configuration, operation, service and other factors.
All applications must comply with applicable Hendrickson specifications and must be approved by the respective vehicle manufacturer with the vehicle in its original, as-built configuration.
Contact Hendrickson for additional details regarding specifications, applications, capacities, and operation, service and maintenance instructions.*

Call Hendrickson at 330.489.0045 or 866.RIDEAIR (743.3247) for additional information.



www.hendrickson-intl.com

TRAILER COMMERCIAL VEHICLE SYSTEMS

2070 Industrial Place SE
Canton, OH 44707-2641 USA
866.RIDEAIR (743.3247)
330.489.0045 • Fax 800.696.4416

Hendrickson Canada

250 Chrysler Drive, Unit #3
Brampton, ON Canada L6S 6B6
800.668.5360
905.789.1030 • Fax 905.789.1033

Hendrickson Mexicana

Circuito El Marqués Sur #29
Parque Industrial El Marqués
Pob. El Colorado, Municipio El Marqués,
Querétaro, México C.P. 76246
+52 (442) 296.3600 • Fax +52 (442) 296.3601

L1057 Rev H 10-19

© 2008 - 2019 Hendrickson USA, L.L.C. All Rights Reserved. All trademarks shown are owned by Hendrickson USA, L.L.C., or one of its affiliates, in one or more countries.
Information contained in this literature was accurate at the time of publication. Product changes may have been made after the copyright date that are not reflected.

Printed in United States of America