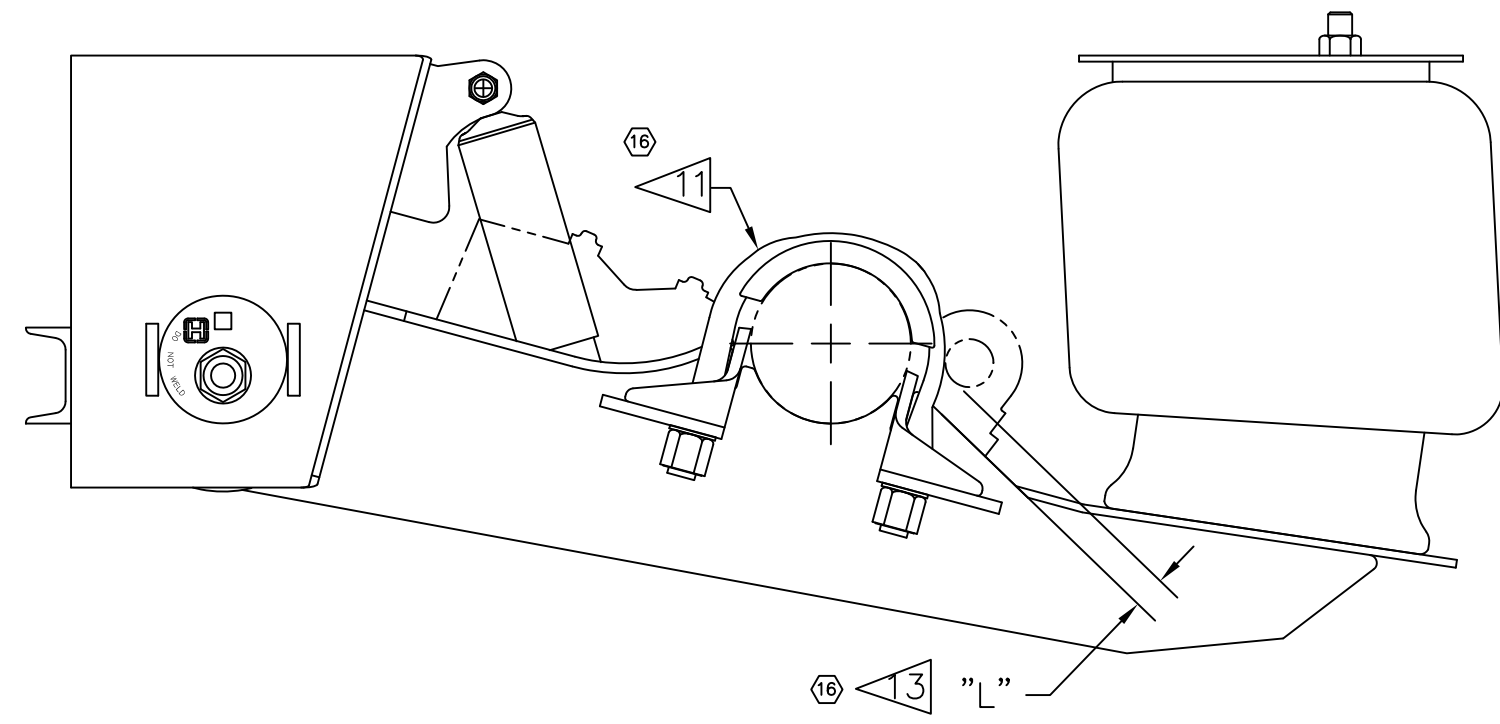
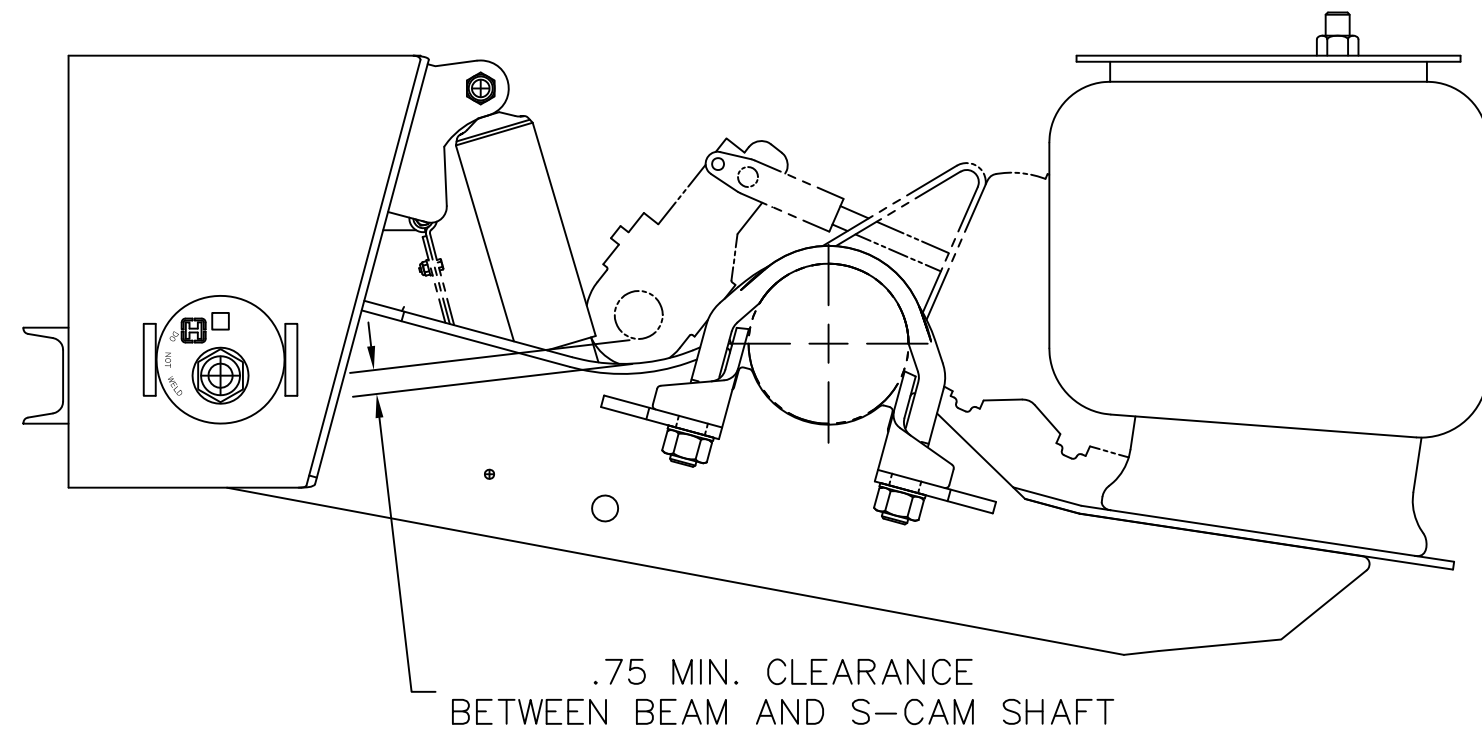


OPTIONAL 17.5" TIRE (12.25" BRAKE) U-BOLT DETAILS



OPTIONAL S-CAMS FORWARD DETAILS**

**AS SHOWN WITH 19.5" OR LARGER TIRES (16.5" BRAKES), BUT ALSO APPLIES TO 17.5" TIRES (12.25" BRAKES)



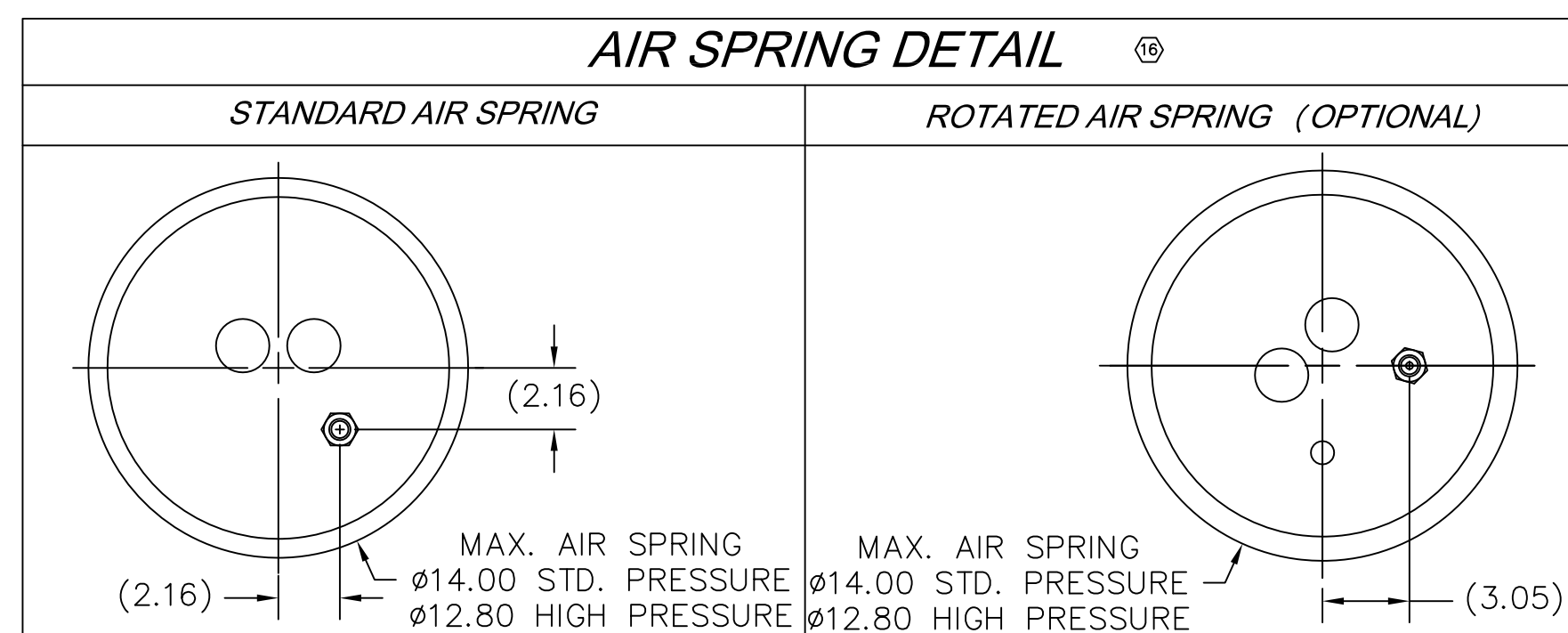
NOTES:

- SEE T44004 FOR INFORMATION ON ASSEMBLY, WELDING PROCEDURE, AND ALIGNMENT.
- LOAD CAPACITY: 25,000 LB @ GROUND.
- SEE PAGE 5 FOR REQUIRED CROSSMEMBER MOUNTING DETAILS. ACTUAL SIZE AND SHAPE MAY VARY WITH TRAILER DESIGN. IT IS THE RESPONSIBILITY OF THE INSTALLER TO ENSURE STRUCTURAL ADEQUACY OF TRAILER FRAME AND CROSSMEMBERS.
- SEE L1182 FOR HEIGHT CONTROL KIT OPTIONS.
- SEE PAGE 2 FOR ALLOWABLE RIDE HEIGHT RANGES.
- SEE PAGE 5 FOR FRAME BRACKET BRACING REQUIREMENTS.
- SEE PAGE 2 FOR TABULATED DIMENSIONS.
- GRAPHICS SHOWN ARE REFERENCE OF A HT250US AT 9.0" RH 16.50" BRAKES S-CAMS REAR.
- DO NOT ROUTE ITEMS THROUGH THIS AREA DUE TO MINIMAL BEAM TO FRAME CLEARANCE.
- SEE PAGE 6 FOR BOLT-ON MOUNTING PATTERN & INSTALLATION DETAILS.
- NOTICE: U-BOLT KIT VARIES DEPENDING ON TIRE SIZE. STANDARD U-BOLT KIT SHOWN IN MAIN VIEWS. FLATTENED U-BOLT SHOWN IN DETAIL VIEW ABOVE. FLATTENED SIDE OF U-BOLT MUST BE INSTALLED ON THE SAME SIDE OF THE AXLE AS THE S-CAM.
- WHEN PAIRING WITH A HTZUS SLIDER SEE D-28439 HTZUS INSTALLATION DRAWING.
- RECOMMENDED BRAKE CAMSHAFT AND BRAKE CHAMBER LOCATIONS LISTED ON PAGE 2 IN CHART AA ARE FOR REFERENCE ONLY AND MAY VARY SLIGHTLY BASED ON AXLE MANUFACTURERS RECOMMENDATIONS. S-CAM "L" POSITION OF 1.00" IS SHOWN TO PROVIDE CLEARANCE AROUND THE BRAKE CHAMBER FOR ACCESS TO THE LOWER SHOCK BOLT WITH AN IMPACT WRENCH. THE S-CAM CANNOT BE POSITIONED FOR SHOCK BOLT CLEARANCE ON 3.5", 4", 5.5" AND 6.5" RIDE HEIGHTS DUE TO INTERFERENCE BETWEEN THE BRAKE CHAMBER AND THE TRAILER FRAME AT FULL JOUNCE.
- S-CAMS FORWARD ARE REQUIRED FOR SBL AND CL LIFT KITS.

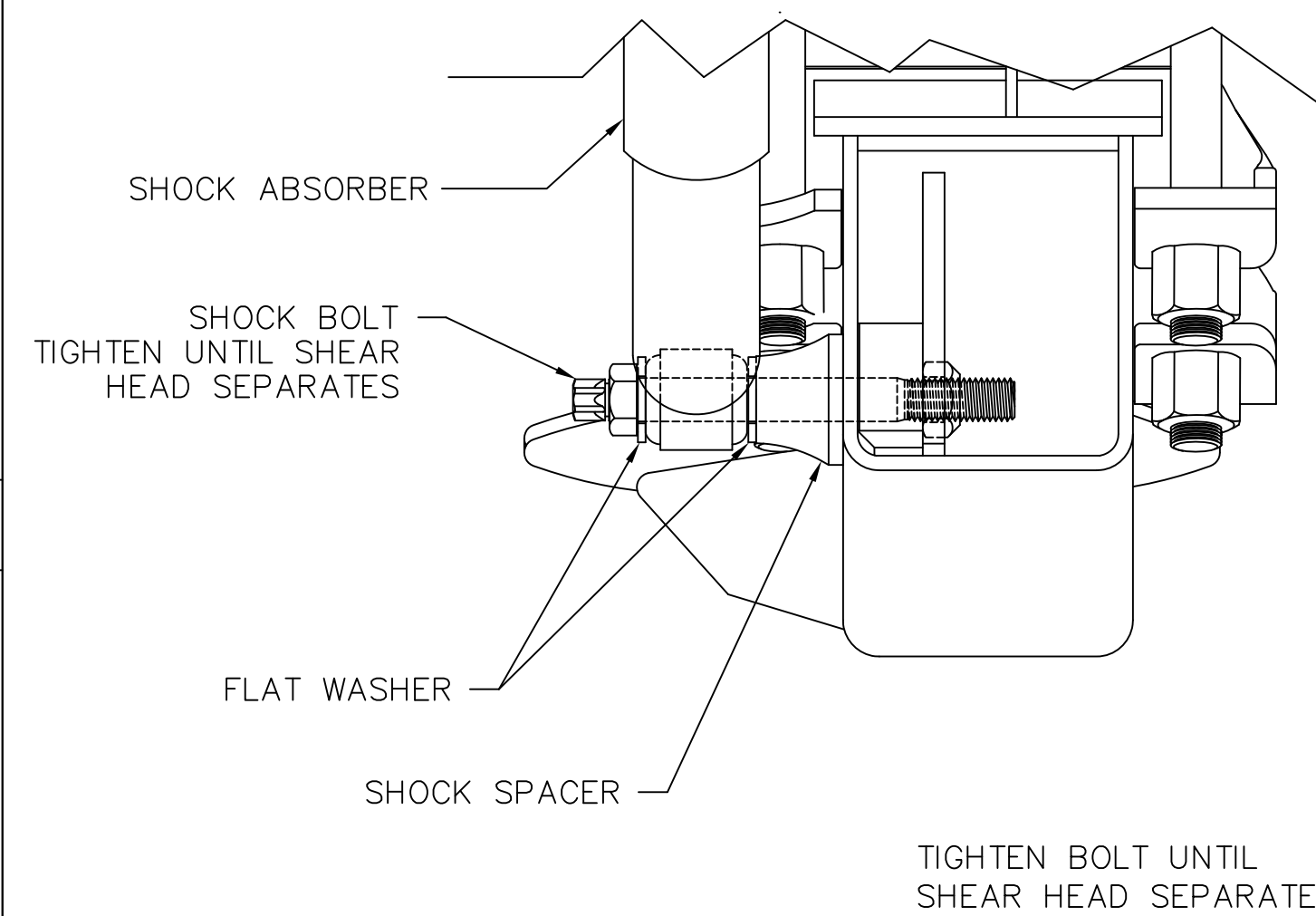
CAUTION

CLEARANCE SPECIFICATIONS:

- 1.0 INCH MINIMUM REQUIRED BETWEEN TOP OF TIRE AND BOTTOM OF TRAILER STRUCTURE WHEN AXLE IS AT FULL JOUNCE.
- 2.0 INCHES MINIMUM REQUIRED BETWEEN INSIDE OF TIRE AND TRAILER STRUCTURE FOR LATERAL MOVEMENT.
- 1.0 INCH MINIMUM CLEARANCE MUST BE MAINTAINED AROUND AIR SPRING WHEN IT IS AT MAXIMUM DIAMETER.



STANDARD LOWER SHOCK MOUNTING ILLUSTRATION (SCALE 1:3)



ARRANGEMENT OF COMPONENTS LISTED IN A-24185 SHOCK BOLT KIT.

CHART BB TORQUE SPECIFICATIONS

DESCRIPTION	SIZE	TORQUE (FT LB)
SHOCK BOLTS, UPPER	3/4-10	210-235
*SHOCK BOLTS, LOWER	3/4-10	210-235
AIR SPRING NUTS, UPPER	3/4-16	80-100
AIR SPRING BOLTS, LOWER	1/2-13	40-50
U-BOLTS	7/8-14	475-525

*USE SHEAR HEAD BOLT TO ESTABLISH TORQUE.

SHOCK STRAP MOUNTING DETAILS (SCALE 1:3)

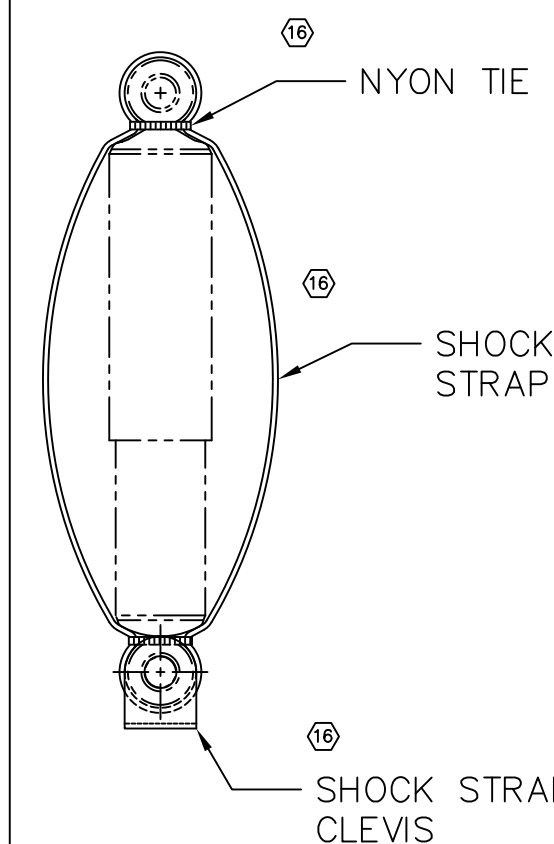
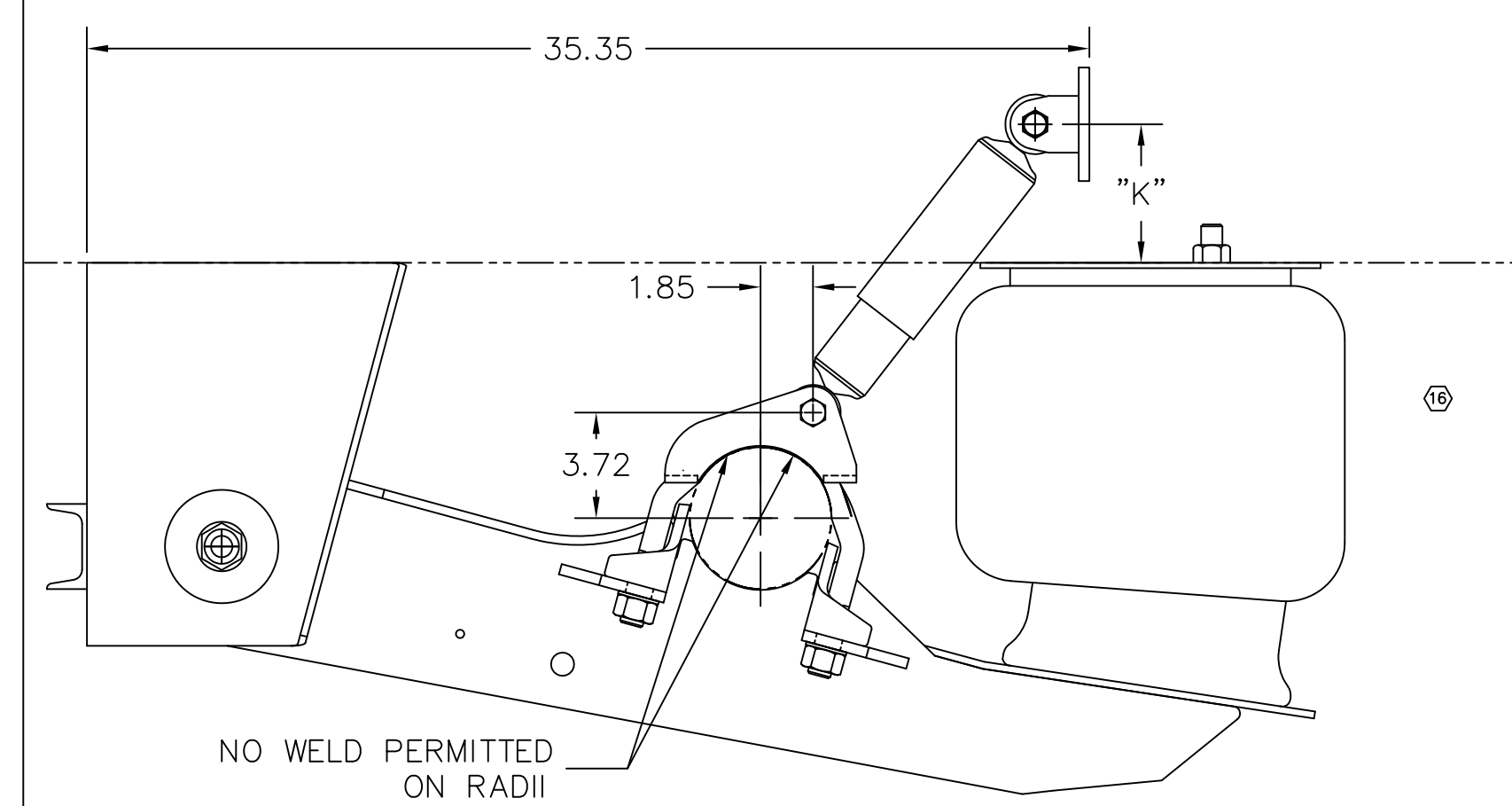


CHART EE - SFK

TRAVEL	STANDARD	LIMITED JOUNCE
RIDE HEIGHT		
3.5	N/A	
4.0		
5.5	SFK-091	N/A
6.5		
7.5	SFK-092	
9.0		SFK-095
12.0	SFK-093	SFK-094
14.0	SFK-094	N/A

REMOTE SHOCK MOUNTING DETAILS

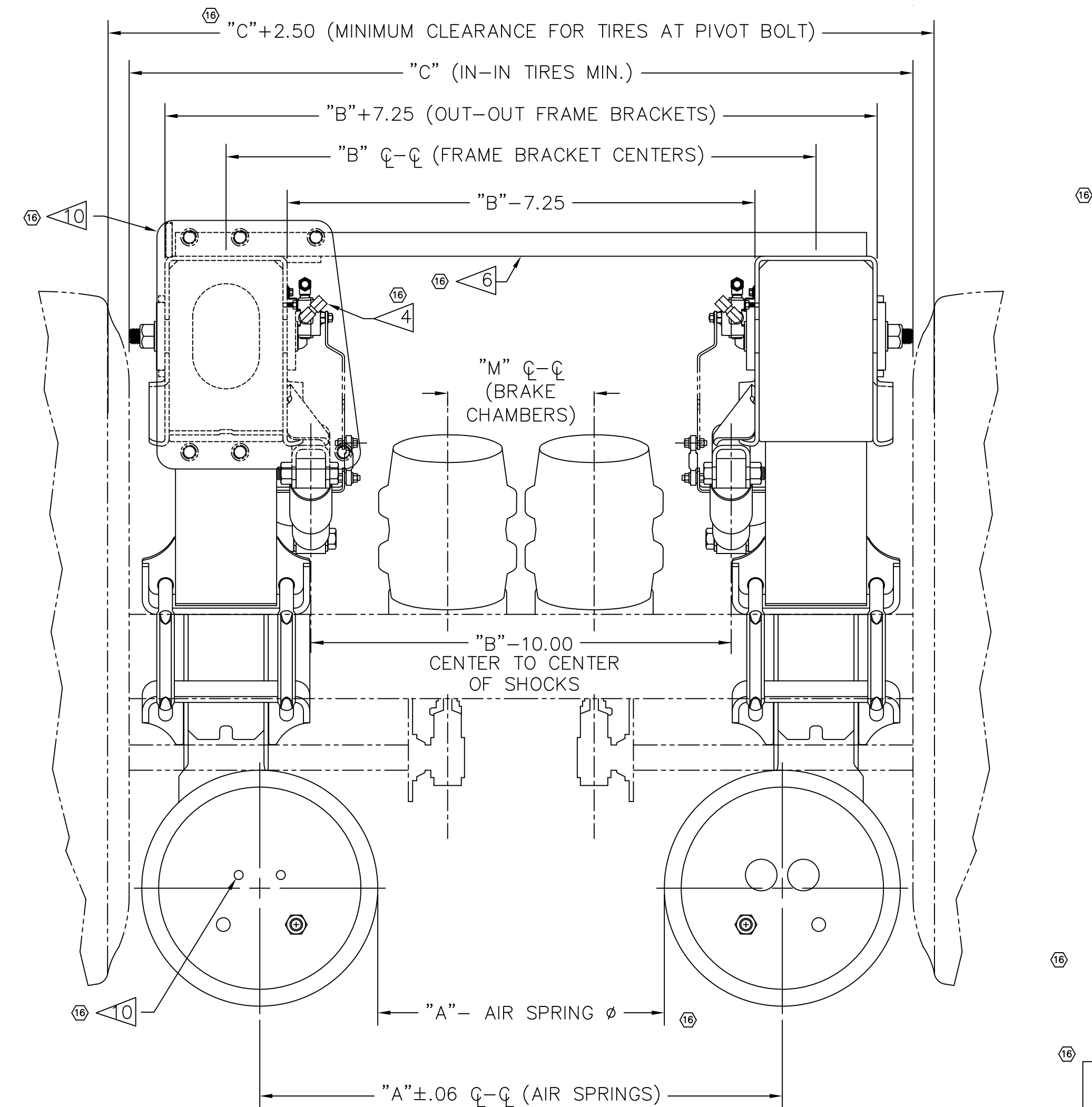
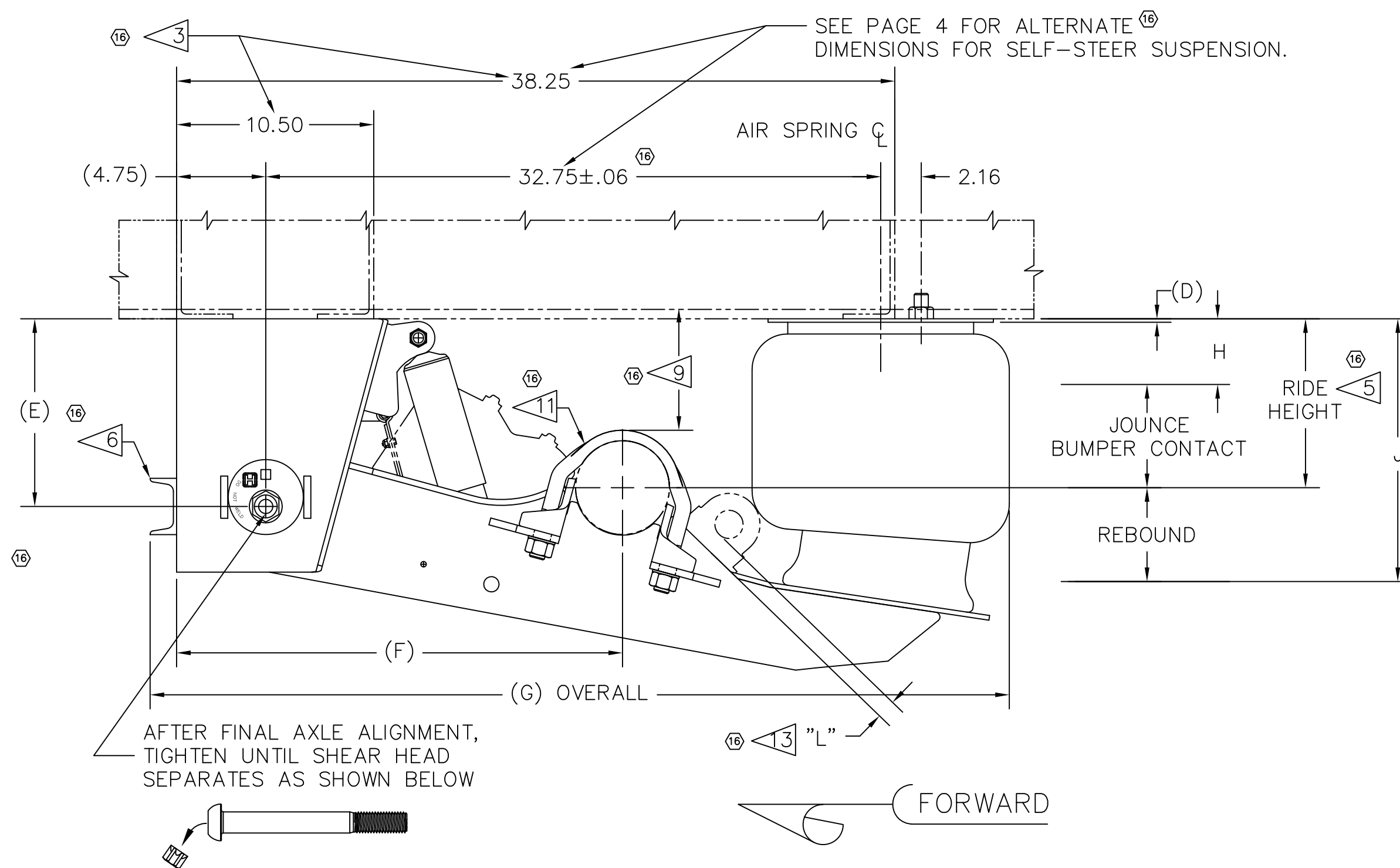


(DIMENSIONS SHOWN ARE WITH AXLE AT RIDE HEIGHT)

CHART DD - DIMENSION "K"

RIDE HEIGHT	5.5	6.5	7.5	9.0	12.0	14.0
TRAVEL						
STANDARD				4.88		
EXTENDED REBOUND	10.50	10.50	9.25	9.00	N/A	

- NOTES:**
- ////// DENOTES WELD PLACEMENT.
 - DIMENSIONS SHOWN ARE FOR STANDARD FRAME BRACKET MTG. ONLY. SEE PAGE 4 FOR ANGLED STRUCTURE REMOTE SHOCK DIMENSIONS.



P
PRODUCTION



UNLESS OTHERWISE NOTED: TOLERANCES ARE: DIMENSIONS ARE: INCHES

16	33172	K/E	10-28-19	DRAWN BY	P.BILLMAN	3-14-01
15	21618	K/R	08-10-12	CHG BY		
14	19734	CRG	05/25/11	APP'D BY	G. SHENKLE	
13	19275	K/E	11/29/10	DATE	J.RUSHE	

**HT250US
INSTALLATION DRAWING**

SCALE: 1:6 SIZE: D PAGE: 1 OF 7
DRAWING NO.: D-25773

This Print remains the property of Hendrickson. All information contained thereon is confidential. It is loaned, subject to return on demand and on express condition that it is not to be copied or used directly or indirectly for any purpose other than the purpose for which it has been loaned to you.

	STANDARD TRAVEL HT250US												
	RIDE HEIGHT	JOUNCE	REBOUND	BUMPER CONTACT	D	E	F	G	H	J	RIDE HEIGHT TOLERANCE LIMITS		SUSP. WEIGHT (LB)
											MIN. (16)	MAX. (16)	
											4		
WELD-ON STANDARD SHOCK MT.	3.5	2.6	3.0	2.2	.19	4.5	23.74	45.18	.9	6.5	3.50	3.50	337
	4.0	3.1	3.2	2.5	.19	4.5	23.76	45.68	.9	7.2	4.00	4.25	346
	5.5	2.1	4.7	1.6	.19	8.0	23.60	45.76	3.4	10.2	5.50	7.25	363
	6.5	3.1	3.7	2.6	.19	8.0	23.71	45.76	3.4	10.2	5.50	7.25	363
	7.5	3.2	6.3	2.7	.19	10.0	23.61	45.76	4.3	13.8	7.50	10.75	380
9.0	4.7	4.8	4.2	.19	10.0	23.75	45.76	4.3	13.8	7.50	10.75	380	
12.0	5.3	4.3	4.8	3.00	12.0	23.78	45.76	6.7	16.3	10.25	13.25	396	
14.0	5.3	4.3	4.7	5.00	14.0	23.78	45.76	8.7	18.3	12.25	15.25	410	
WELD-ON REMOTE SHOCK MT.	5.5	2.1	4.2	1.6	.19	8.0	23.60	45.76	3.4	9.7	5.50	6.75	371
	6.5	3.1	3.3	2.6	.19	8.0	23.71	45.76	3.4	9.8	5.50	6.75	371
	7.5	3.2	5.3	2.7	.19	10.0	23.61	45.76	4.3	12.8	7.50	9.75	387
	9.0	4.7	3.8	4.2	.19	10.0	23.75	45.76	4.3	12.8	7.50	9.75	387
	12.0	5.3	5.2	4.7	3.00	12.0	23.78	45.76	6.7	17.2	10.25	14.25	406
14.0	5.3	3.5	4.7	5.00	14.0	23.78	45.76	8.7	17.5	12.25	14.50	413	
BOLT-ON STANDARD SHOCK MT.	5.5	1.9	5.2	1.4	.25	8.38	23.55	45.99	3.6	10.7	5.50	7.75	379
	6.5	2.9	4.2	2.4	.25	8.38	23.68	45.99	3.6	10.7	5.50	7.75	379
	7.5	3.0	6.8	2.5	.25	10.38	23.56	45.99	4.5	14.3	7.50	11.25	396
	9.0	4.5	5.3	4.0	.25	10.38	23.73	45.99	4.5	14.3	8.00	11.25	396
	12.0	4.9	4.6	4.4	3.19	12.5	23.77	45.99	7.1	16.6	10.50	13.50	424
14.0	4.9	4.6	4.4	5.19	14.5	23.77	45.99	9.1	18.6	12.50	15.50	438	
SHORT BELLOWS	6.5	3.1	3.7	2.6	.19	8.0	23.71	45.79	3.4	10.2	5.50	7.25	351
FRAME CLEARANCE	14.0	5.3	4.1	4.7	5.00	14.0	23.77	45.75	8.7	18.1	12.25	15.00	410
ANGLED STRUCTURE	6.5	3.1	5.2	2.6	.19	8.0	23.71	45.79	3.4	11.7	6.50	8.75	357
ANGLED STRUCTURE REMOTE SHOCK MOUNTING	7.5	3.2	4.1	2.7	.19	8.0	23.61	45.98	4.3	11.6	7.50	8.50	359
ROTATED STRUCTURE	7.5	3.2	5.3	2.7	.19	8.0	23.22	45.99	4.3	12.8	7.50	9.75	363

	LIMITED JOUNCE TRAVEL HT250US												
	RIDE HEIGHT	JOUNCE	REBOUND	BUMPER CONTACT	D	E	F	G	H	J	RIDE HEIGHT TOLERANCE LIMITS		SUSP. WEIGHT (LB)
											MIN. (16)	MAX. (16)	
											4		
WELD-ON STANDARD SHOCK MT.	3.5	2.2	3.0	1.7	1.00	4.50	23.75	45.18	1.3	6.5	3.50	3.50	340
	6.5	1.8	7.3	1.2	1.00	10.0	23.45	45.76	4.7	13.8	6.50	10.75	382
	7.5	2.8	6.3	2.2	1.00	10.0	23.61	45.76	4.7	13.8	7.50	10.75	382
	9.0	3.1	4.8	2.6	3.00	10.0	23.75	45.76	5.9	13.8	9.00	10.75	389
	12.0	3.3	6.3	2.7	5.00	14.0	23.67	45.76	8.7	18.3	12.00	15.25	410
6.5	1.5	7.8	1.0	1.19	10.38	23.38	45.99	5.0	14.3	6.50	11.25	399	
7.5	2.5	6.8	2.0	1.19	10.38	23.56	45.99	5.0	14.3	7.50	11.25	399	
9.0	2.9	5.3	2.3	3.19	10.38	23.73	45.99	6.1	14.3	9.00	11.25	406	
12.0	2.9	6.6	2.4	5.19	14.5	23.63	45.99	9.1	18.6	12.00	15.50	438	

	EXTENDED REBOUND TRAVEL HT250US												
	RIDE HEIGHT	JOUNCE	REBOUND	BUMPER CONTACT	D	E	F	G	H	J	RIDE HEIGHT TOLERANCE LIMITS		SUSP. WEIGHT (LB)
											MIN. (16)	MAX. (16)	
											4		
BOLT-ON WELD-ON STANDARD SHOCK MT.	6.5	3.1	5.2	2.6	.19	8.0	23.71	45.79	3.4	11.7	6.50	8.75	364
WELD-ON REMOTE SHOCK MT.	6.5	3.1	5.2	2.6	.19	8.0	23.71	45.76	3.4	11.7	6.50	8.75	370
	7.5	3.2	5.5	2.7	.19	10.0	23.61	45.76	4.3	13.0	7.50	10.00	389
	9.0	4.7	4.3	4.2	.19	10.0	23.75	45.76	4.3	13.3	7.50	10.25	389
BOLT-ON REMOTE SHOCK MT.	5.5 (16)	1.9	6.2	1.4	.25	8.38	23.71	45.99	3.6	11.7	5.50	8.75	403
	6.5 (16)	2.9	5.3	2.4	.25	8.38	23.61	45.99	3.6	11.8	5.50	8.75	403

	STANDARD TRAVEL SELF-STEER HT250US												
	RIDE HEIGHT	JOUNCE	REBOUND	BUMPER CONTACT	D	E	F	G	H	J	RIDE HEIGHT TOLERANCE LIMITS		SUSP. WEIGHT (LB)
											MIN. (16)	MAX. (16)	
											4		
WELD-ON STANDARD SHOCK MT.	7.5	2.9	6.3	2.3	.69	10.0	23.61	48.26	4.6	13.8	7.50	10.75	388
	9.0	4.4	4.8	3.8	.69	10.0	23.75	48.26	4.6	13.8	7.50	10.75	388
	12.0	4.9	4.3	4.4	3.50	12.0	23.78	48.26	7.1	16.3	10.50	13.25	405
	14.0	4.9	4.3	4.4	5.50	14.0	23.78	48.26	9.1	18.3	12.50	15.25	418
BOLT-ON WELD-ON STANDARD SHOCK MT.	9.0	3.9	5.3	3.4	1.19	10.38	23.73	48.49	5.1	14.3	7.50	11.25	406
	12.0	4.3	4.6	3.8	4.19	12.5	23.77	48.49	7.7	16.6	11.25	13.50	435
	14.0	4.3	4.6	3.8	6.19	14.5	23.77	48.49	9.7	18.6	13.25	15.50	448

	CHART AA (16)					
	20", 22", 24" TIRES		19.5" TIRES		17.5" TIRES	
	RIDE HEIGHT	DIM "L"	RIDE HEIGHT	DIM "L"	RIDE HEIGHT	DIM "L"
3.50-4.00 RIDE HEIGHT WELD-ON	3.50	(2.60)	3.50	(2.27)	3.50	(1.48)
	4.00	(2.71)	4.00	(2.37)	4.00	(1.56)
	5.50	(1.00)	5.50	(1.00)	5.50	(1.00)
5.50-14.00 RIDE HEIGHT	6.50	(1.00)	6.50	(1.00)	6.50	(1.00)
	7.50	(1.00)	7.50	(1.00)	7.50	(1.00)
	9.00	(1.00)	9.00	(1.00)	9.00	(1.00)
	12.00	(1.00)	12.00	(1.00)	12.00	(1.00)
	14.00	(1.00)	14.00	(1.00)	14.00	(1.00)
	REMOTE SHOCK WELD-ON	5.50	(2.25)	5.50	(1.94)	5.50
6.50		(2.49)	6.50	(2.16)	6.50	(1.39)
7.50		(2.28)	7.50	(1.97)	7.50	(1.25)
9.00		(2.63)	9.00	(2.30)	9.00	(1.51)
12.00		(2.85)	12.00	(2.50)	12.00	(1.67)
14.00		(2.85)	14.00	(2.50)	14.00	(1.67)

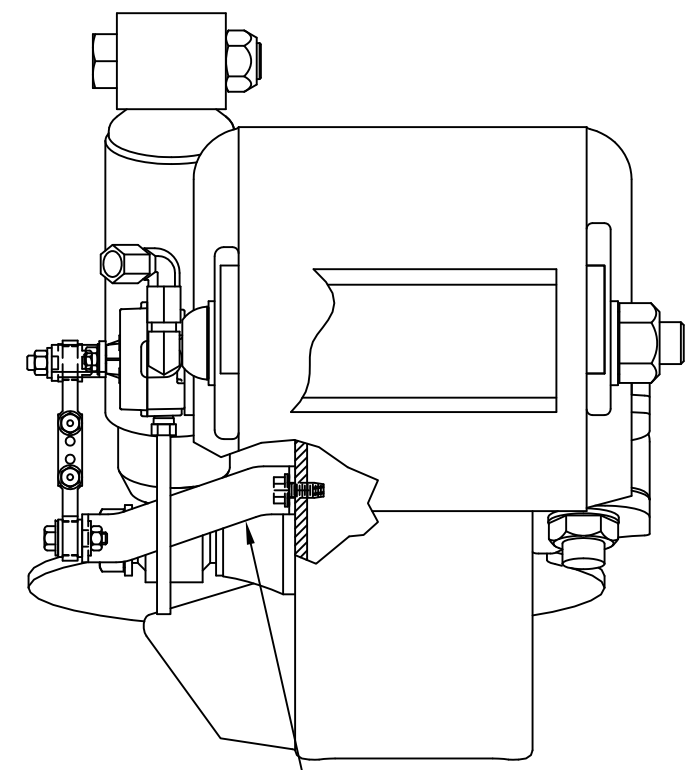
CHART CC (16)		
TRAILER WIDTH (IN)	96.0	102.0
DIMENSION "A" (IN)	31.00	37.00
DIMENSION "B" (IN)	35.00	41.00
DIMENSION "C" (IN)	46.50	52.50
DIMENSION "M" (IN)	9.5 MAX.	15.5 MAX.

- NOTES:
- SUSPENSION WEIGHT INCLUDES SUSPENSION COMPONENTS ONLY. WEIGHT REFLECTS STANDARD AIR SPRING, FRAME BRACKETS WITH STANDARD SHOCKS. ADD 3.00 LB. FOR HIGH DAMPING SHOCK.
 - JOUNCE AND REBOUND DIMENSIONS CHANGE AS THE RIDE HEIGHT CHANGES FROM THE NOMINAL POSITION.
 - DIMENSIONS "H" & "J" WILL REMAIN CONSTANT REGARDLESS OF RIDE HEIGHT VARIATION FROM NOMINAL POSITION.

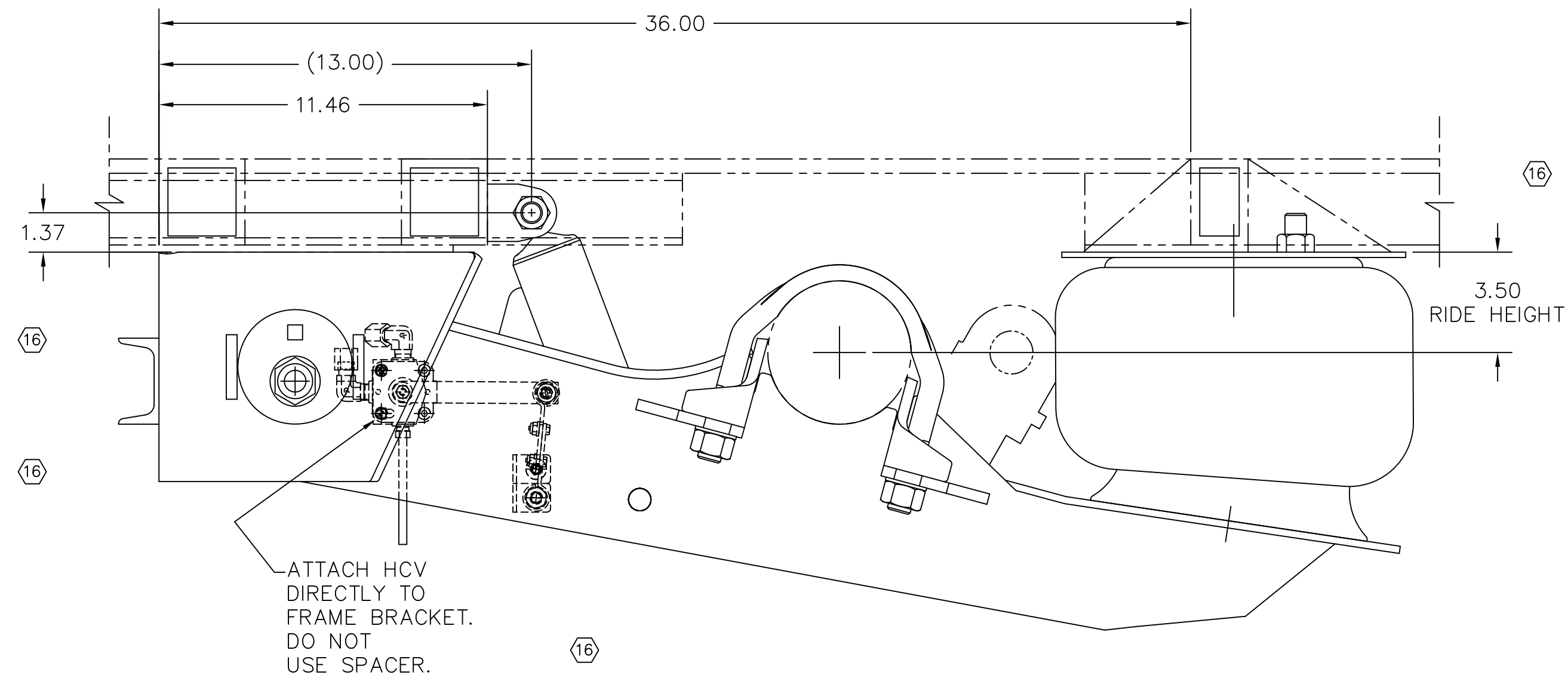
RIDE HEIGHT - JOUNCE = "H"
RIDE HEIGHT + REBOUND = "G"
 - FOR OPTIMUM SUSPENSION PERFORMANCE ALL SUSPENSIONS ON A TRAILER SHOULD BE AT DESIGNED RIDE HEIGHT WHEN THE TRAILER IS LOADED. TRAILERS WITH FLEXIBLE FRAMES REQUIRE SPECIAL ATTENTION TO MAKE SURE THEY OPERATE WITHIN THE RIDE HEIGHT TOLERANCE LIMITS, BOTH EMPTY AND LOADED. OPERATION OUTSIDE OF THE MAXIMUM AND/OR MINIMUM RIDE HEIGHT TOLERANCE LIMITS CAN REDUCE RIDE QUALITY AND SHORTEN SUSPENSION LIFE.
 - VARIATION IN RIDE HEIGHT BETWEEN LIKE SUSPENSIONS MAY RESULT IN UNEQUAL LOADING OF THE AXLES.

16 P PRODUCTION

This Print remains the property of Hendrickson. All information contained thereon is confidential. It is loaned, subject to return on demand and on express condition that it is not to be copied or used directly or indirectly for any purpose other than the purpose for which it has been loaned to you.

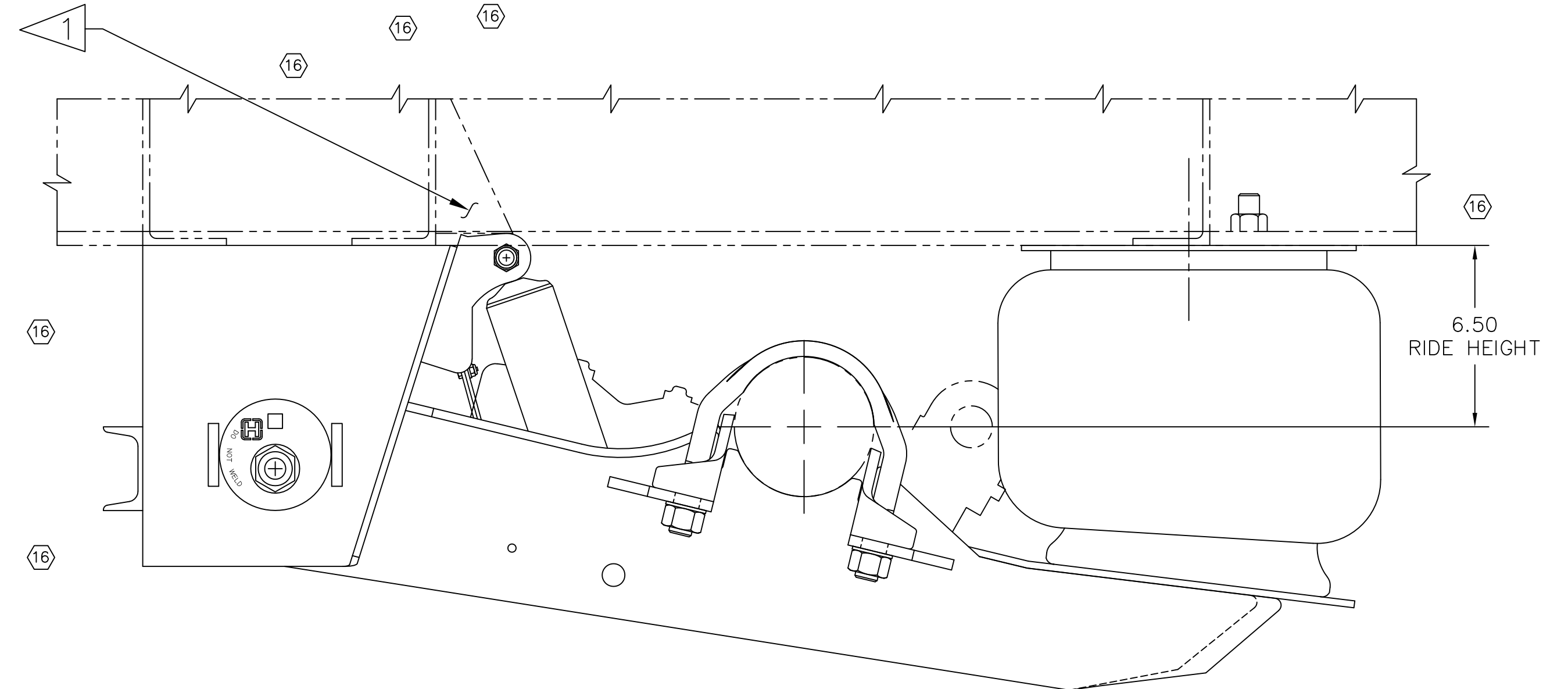


REPLACE HCV BRACKET INCLUDED WITH AIR KIT WITH ONE INCLUDED WITH SUSPENSION.

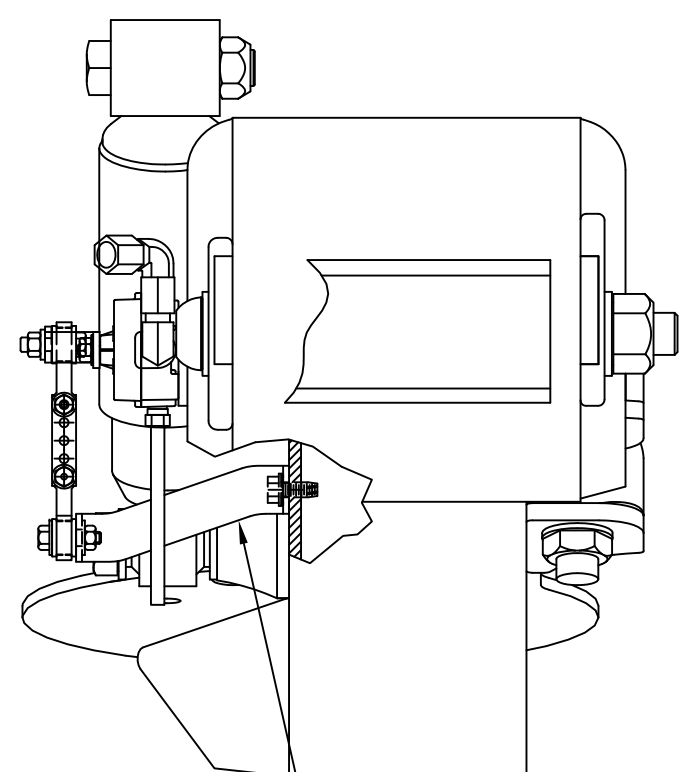


**3.5 RIDE HEIGHT STANDARD
WELD-ON MOUNTING INFORMATION**

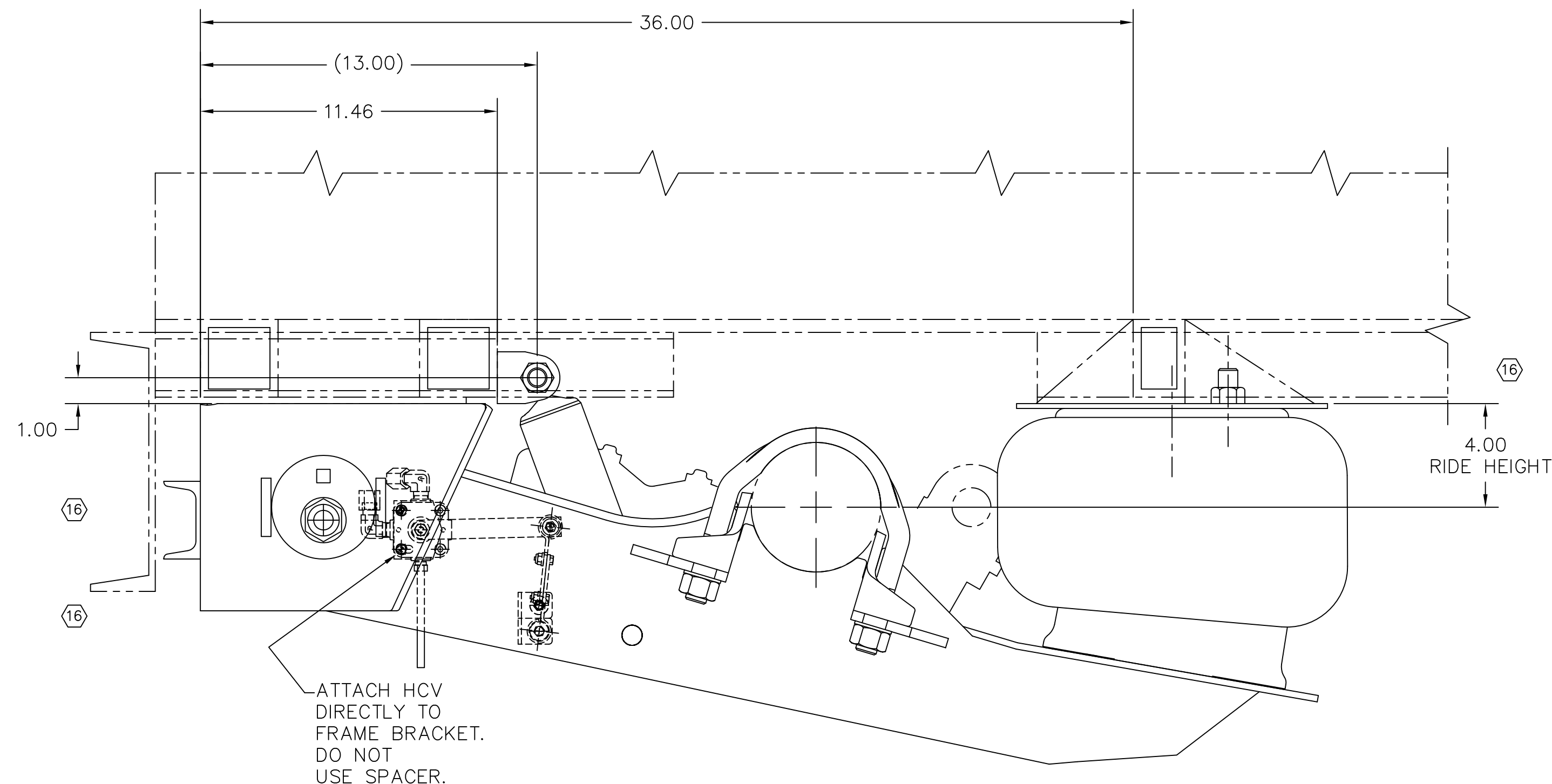
ATTACH HCV DIRECTLY TO FRAME BRACKET. DO NOT USE SPACER.



**6.5 RIDE HEIGHT EXTENDED REBOUND
WELD-ON MOUNTING INFORMATION**



REPLACE HCV BRACKET INCLUDED WITH AIR KIT WITH ONE INCLUDED WITH SUSPENSION.



**4.0 RIDE HEIGHT STANDARD
WELD-ON MOUNTING INFORMATION**

ATTACH HCV DIRECTLY TO FRAME BRACKET. DO NOT USE SPACER.

NOTES:

1. BECAUSE THE SHOCK IS NOT FULLY SUPPORTED BY THE FRAME BRACKET ASSEMBLY, THE INSTALLER MUST REINFORCE THE CLEVIS TO THE TRAILER STRUCTURE. 8,000 LB. IS NORMALLY THE MAXIMUM LOAD AT THE SHOCK.
2. ALL DIMENSIONS NOT SHOWN ON THIS PAGE MATCH PAGE 1 GRAPHICS AND TABLES ON PAGE 2

This Print remains the property of Hendrickson. All information contained thereon is confidential. It is loaned, subject to return on demand and on express condition that it is not to be copied or used directly or indirectly for any purpose other than the purpose for which it has been loaned to you.



TRAILER COMMERCIAL VEHICLE SYSTEMS
2070 INDUSTRIAL PLACE S.E., CANTON, OH 44707-2800 U.S.A.

UNLESS OTHERWISE NOTED: TOLERANCES ARE: X: ± XX: ± XXX: ± ANGULAR: ±	DIMENSIONS ARE: INCHES 1/16 1/32 1/64	16 33172 K/E 10-28-19	15 21618 K/R 08-10-12	14 19734 CRG 05/25/11	13 19275 K/E 11/29/10	DRAWN BY P.BILLMAN 3-14-01	CHKD BY G. SHENKLE 3/15/01	APPRD BY J.RUSHE
---	---	-----------------------	-----------------------	-----------------------	-----------------------	----------------------------	----------------------------	------------------

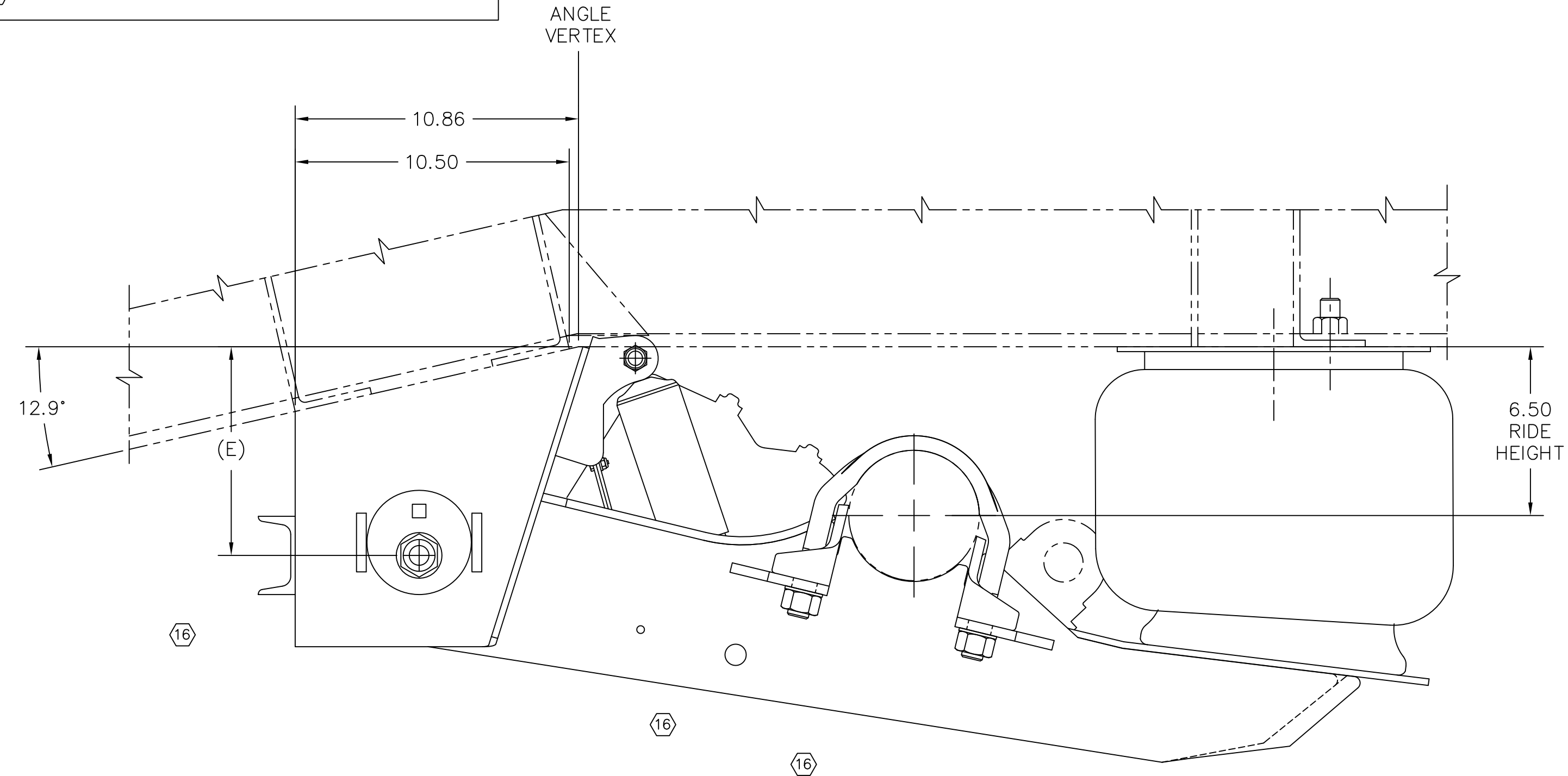
THIS DRAWING IS THE CONFIDENTIAL PROPERTY OF HENDRICKSON

HT250US
INSTALLATION DRAWING

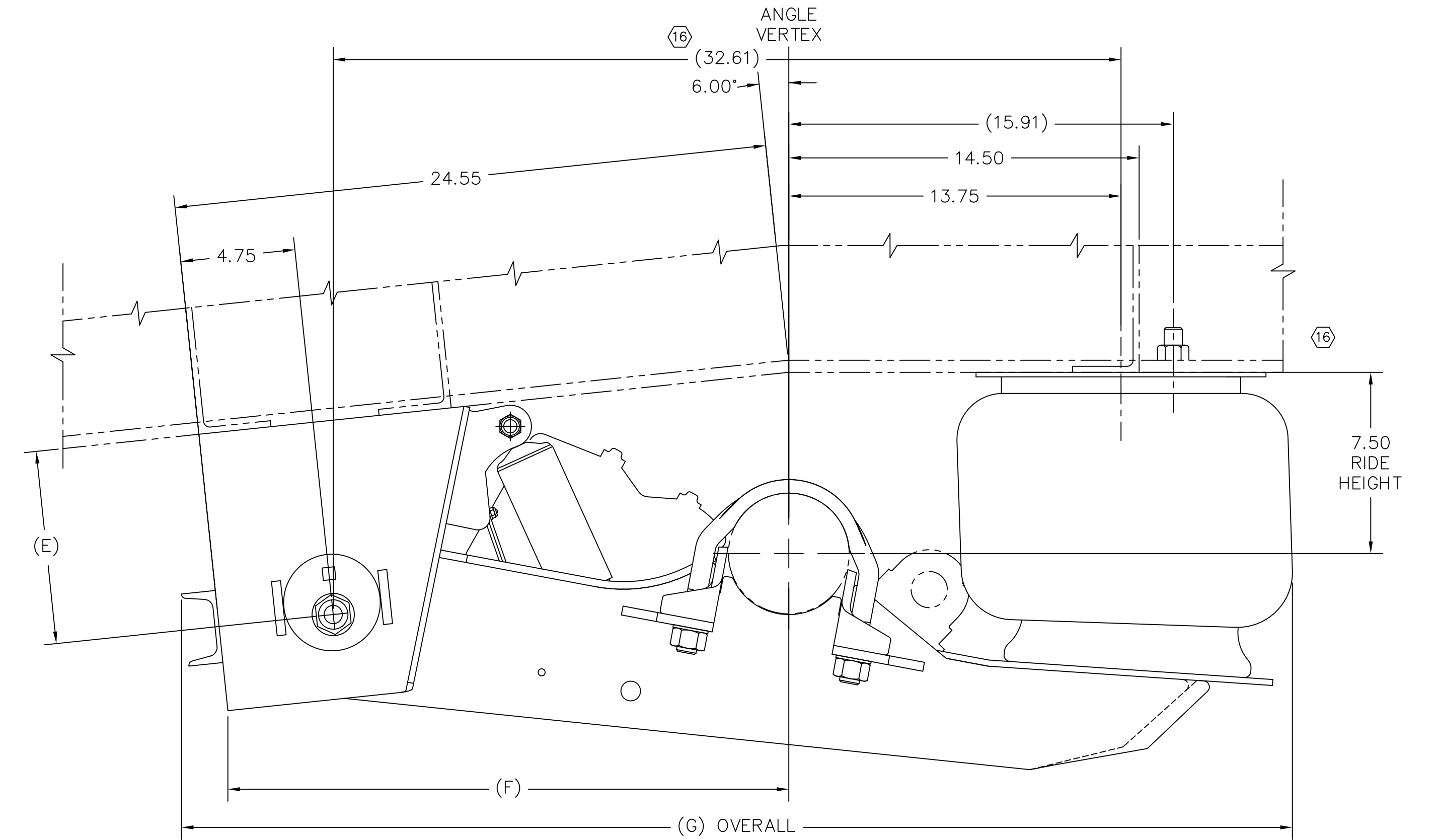
SCALE 1:4	SIZE D	PAGE 3 OF 7
DRAWING NO. D-25773		PRODUCTION

This Print remains the property of Hendrickson. All information contained thereon is confidential. It is loaned, subject to return on demand and on express condition that it is not to be copied or used directly or indirectly for any purpose other than the purpose for which it has been loaned to you.

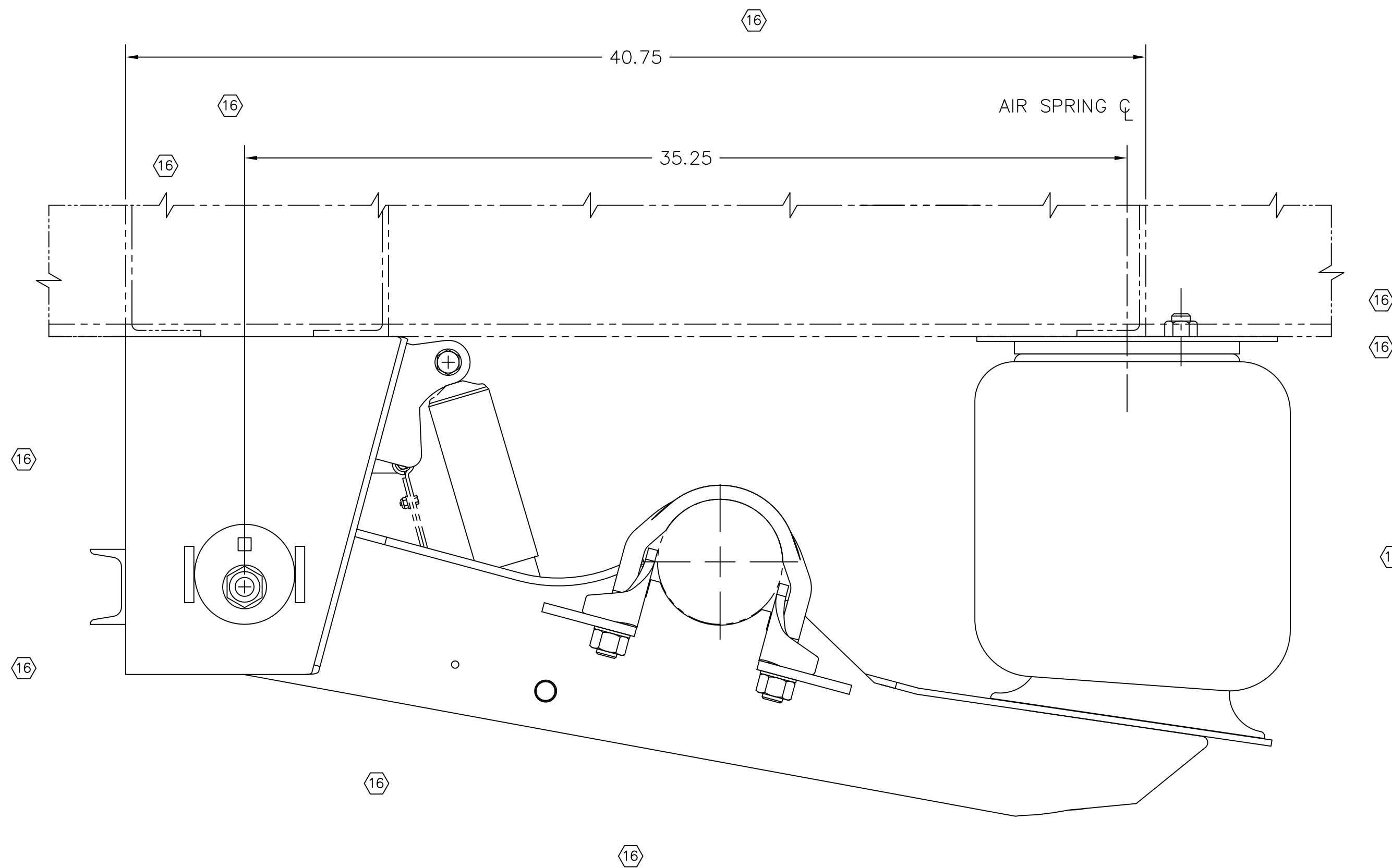
NOTES:
1. ALL DIMENSIONS NOT SHOWN ON THIS PAGE MATCH PAGE 1 GRAPHICS AND TABLES ON PAGE 2.



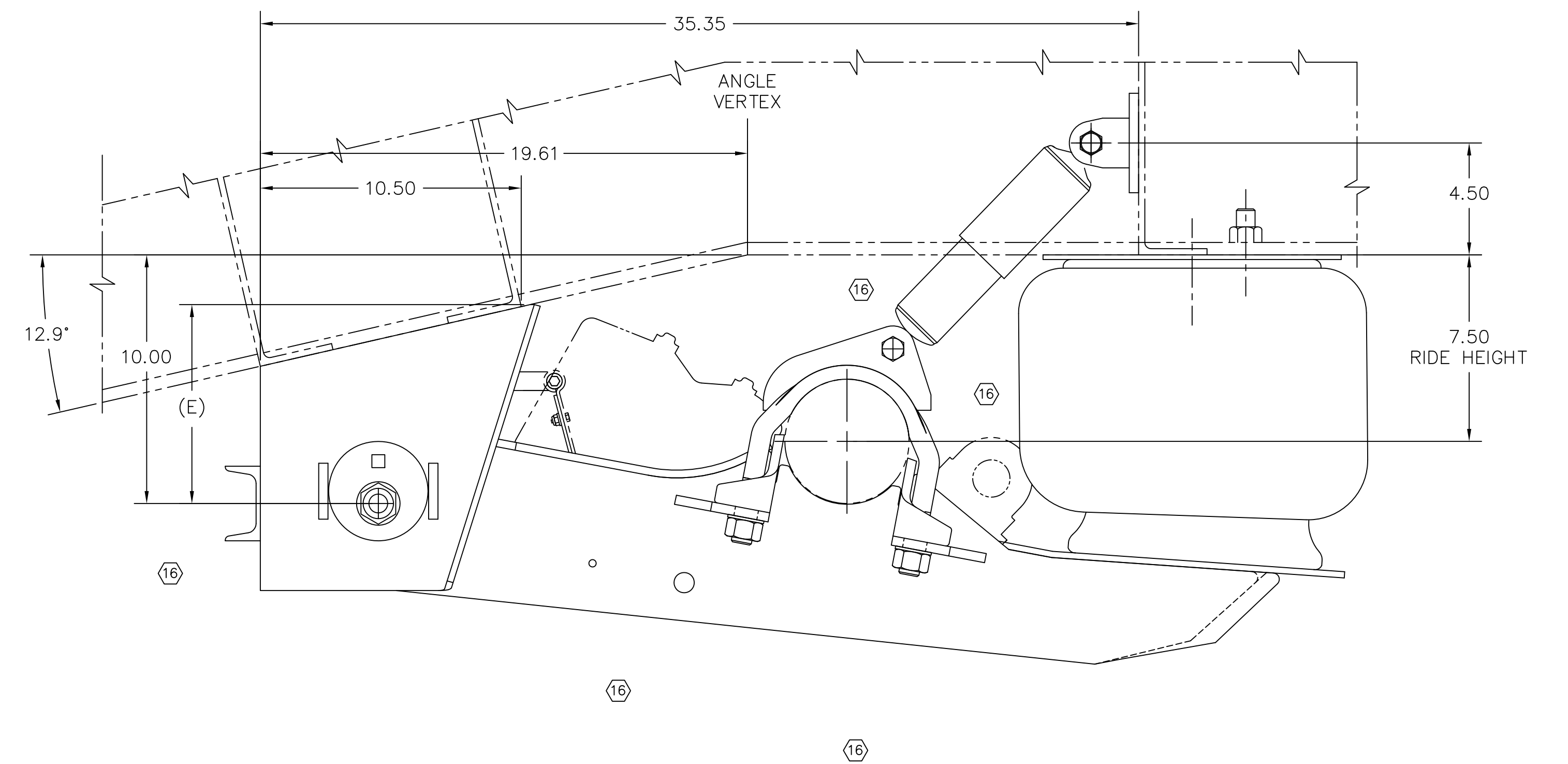
ANGLED STRUCTURE MOUNTING INFORMATION



ROTATED STRUCTURE MOUNTING INFORMATION



SELF-STEER AXLE SUSPENSION INFORMATION



ANGLED STRUCTURE REMOTE SHOCK MOUNTING INFORMATION

HENDRICKSON

TRAILER COMMERCIAL VEHICLE SYSTEMS
2070 INDUSTRIAL PLACE S.E., CANTON, OH 44707-2800, U.S.A.

UNLESS OTHERWISE NOTED:		16	33172	K/E	10-28-19	DRAWN BY	C.RADCLIFF	8/25/05
TOLERANCES ARE:	DIMENSIONS ARE:	15	21618	K/R	08-10-12	CHKD BY	P. BILLMAN	8/28/05
XX: ±	INCHES	14	19734	CRG	05/25/11	APPR BY	R. GORE	
XXX: ±		13	19275	K/E	11/29/10			
ANGULAR: ±	3RD ANGLE PROJECTION							
	DIMENSIONS ADHERE TO ANSI Y14.5M-1982	REV.	ECN NO.	BY	DATE			

THIS DRAWING IS THE CONFIDENTIAL PROPERTY OF HENDRICKSON

HT250US
INSTALLATION DRAWING

SCALE	1:4	SIZE	D	PAGE	4 OF 7
DRAWING NO.	D-25773				

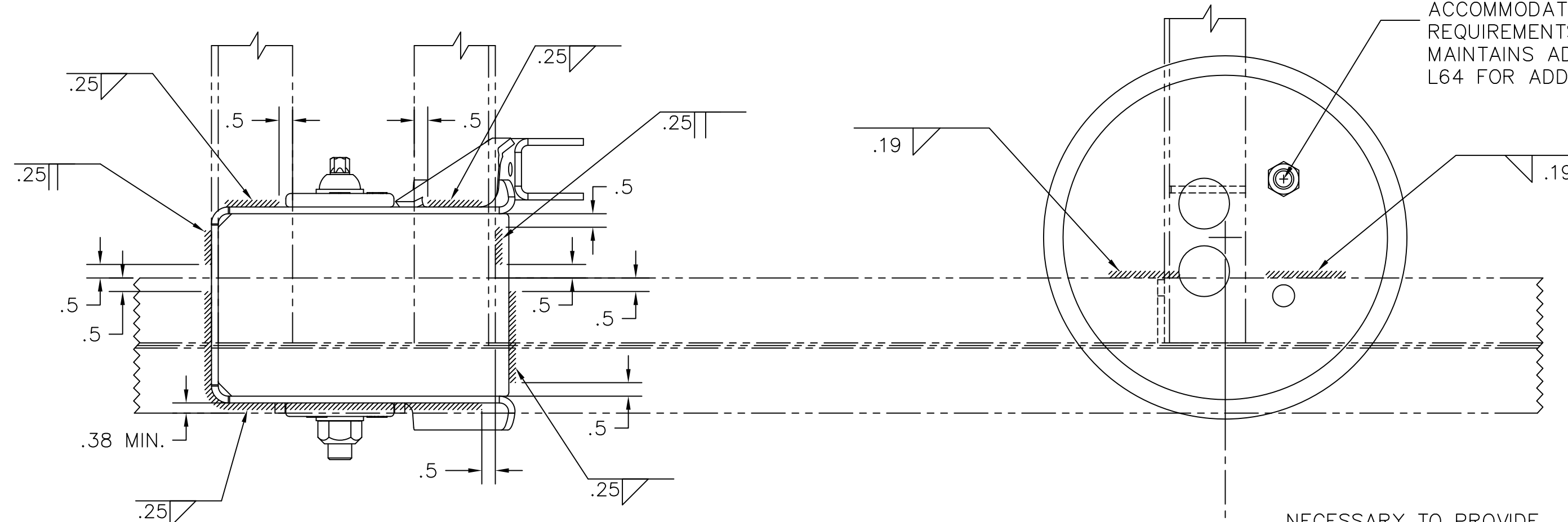
PRODUCTION

SUGGESTED WELD-ON ATTACHMENT DETAIL

FRAME BRACKET WELD-ON WINGLESS

AIR SPRING PLATE STANDARD

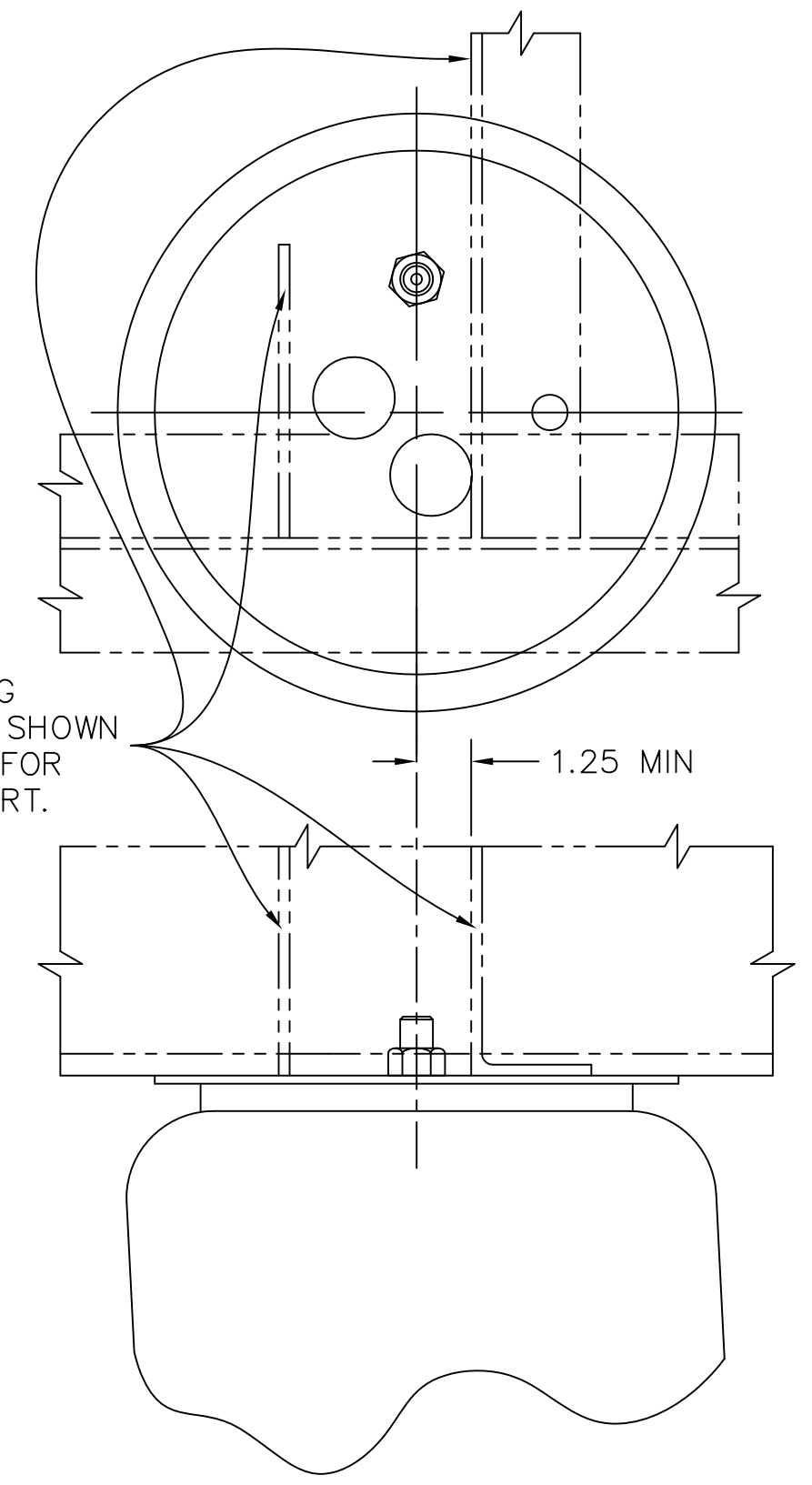
AIR SPRING STUD MAY BE ROTATED ABOUT AIR SPRING CENTER TO ACCOMMODATE INDIVIDUAL FRAME REQUIREMENTS, PROVIDED CUSTOMER MAINTAINS ADEQUATE SUPPORT. SEE L64 FOR ADDITIONAL INFORMATION.



NECESSARY TO PROVIDE CLEARANCE FOR MOUNTING NUTS AND SOCKET WRENCH

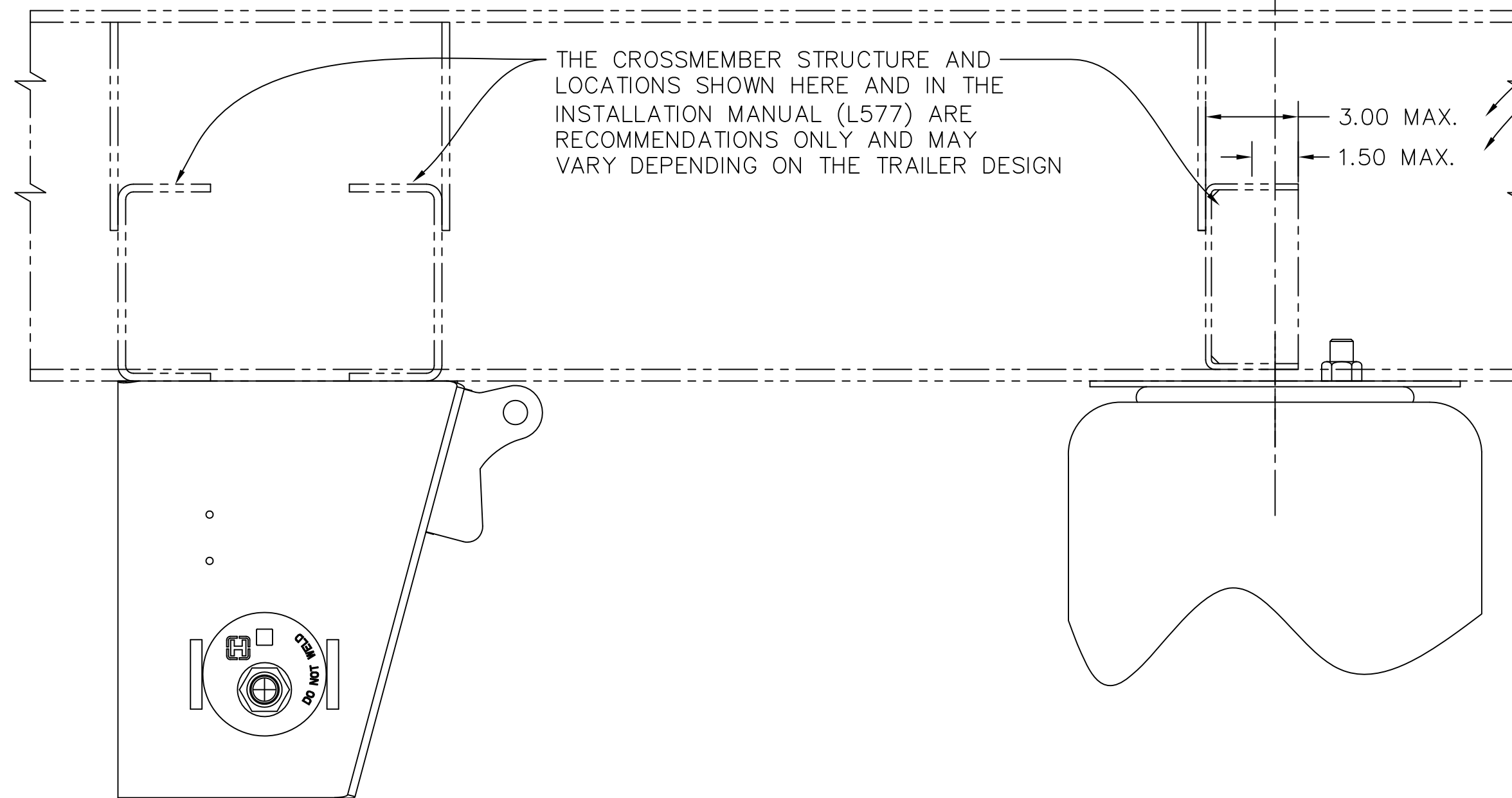
OPTIONAL ROTATED AIR SPRING DETAIL

LOCATE AIR SPRING CROSSMEMBER AS SHOWN AND ADD GUSSET FOR ADDITIONAL SUPPORT.



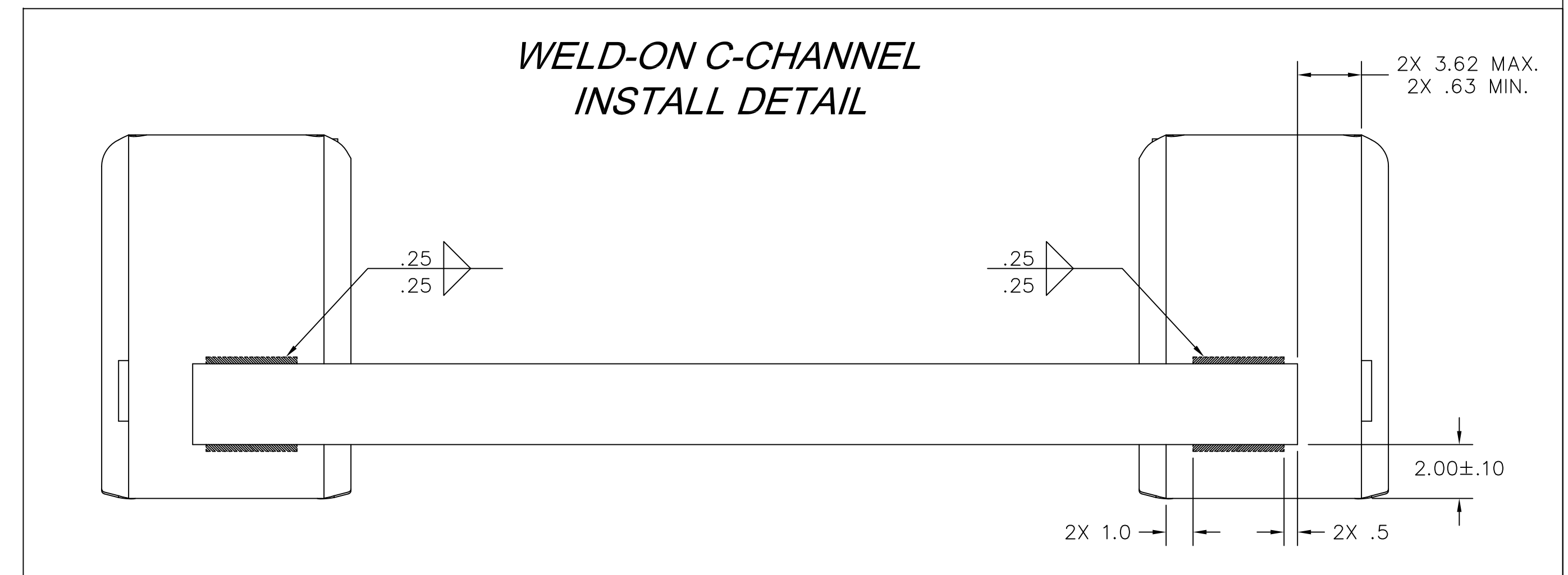
GUSSET (FULL HEIGHT RECOMMENDED)

EXTERNAL WEB STIFFENER (OPTIONAL) ALIGNED WITH WEB OF EACH CROSSMEMBER RECOMMENDED IF INTERNAL GUSSETS ARE OMITTED OR NOT FULL-HEIGHT



INSTALLER TO SUPPLY SPACER BETWEEN TOP OF AIR SPRING MOUNTING PLATE AND UNDERSIDE OF CROSSMEMBER

WELD-ON C-CHANNEL INSTALL DETAIL



NOTES:

1. PATTERN DENOTES WELD PLACEMENT.
2. SEE L577 INSTALLATION INSTRUCTIONS FOR ADDITIONAL INFORMATION ON FRAME BRACKET AND CROSSMEMBER WELDING PROCEDURES.
3. SEE PAGE 2 FOR TABULATED DIMENSIONS.
4. FOR FRAME BRACKET OVERHANG SEE PAGE 6 FOR SUGGESTED METHOD OF SUPPORT.
5. SEE L64, TRAILER SUSPENSION SYSTEMS WELDING PROCEDURES FOR ADDITIONAL INFORMATION ON FRAME BRACKET, CROSS MEMBER, UPPER SHOCK BRACKET AND AIR SPRING MOUNT WELDING PROCEDURES.

CAUTION

CROSSMEMBER REQUIREMENTS

- A) CROSSMEMBER AND/OR GUSSETS MUST ADEQUATELY SUPPORT UPPER AIR SPRING PLATE. 20,000 LBS. CAN BE EXERTED THROUGH AIR SPRING BUMPER

FRAME BRACKET SUPPORT REQUIREMENTS

- A) ALL SUSPENSIONS REQUIRE FRAME BRACKET SUPPORT.
B) IF FRAME BRACKET SUPPORT IS NOT PURCHASED FROM HENDRICKSON THEN IT IS THE RESPONSIBILITY OF THE SUSPENSION INSTALLER TO PROVIDE AN EQUIVALENT SUPPORT.

This Print remains the property of Hendrickson. All information contained thereon is confidential. It is loaned, subject to return on demand and on express condition that it is not to be copied or used directly or indirectly for any purpose other than the purpose for which it has been loaned to you.

HENDRICKSON

TRAILER COMMERCIAL VEHICLE SYSTEMS
2070 INDUSTRIAL PLAGE SE., CANTON, OH 44707-2800 U.S.A.

UNLESS OTHERWISE NOTED:
TOLERANCES ARE: DIMENSIONS ARE:
X: ± .005 INCHES
XX: ± .010 INCHES
XXX: ± .015 INCHES
ANGULAR: ± .5°
DIMENSIONS ADHERE TO ANSI Y14.5M-1982

16 33172 KJE 10-28-19
REV. ECN NO. BY DATE

DRAWN BY: K. ERDMANN
CHKD BY: J. HOFER
APP'D BY: S. BIRKEY

10-28-19
THIS DRAWING IS THE CONFIDENTIAL PROPERTY OF HENDRICKSON

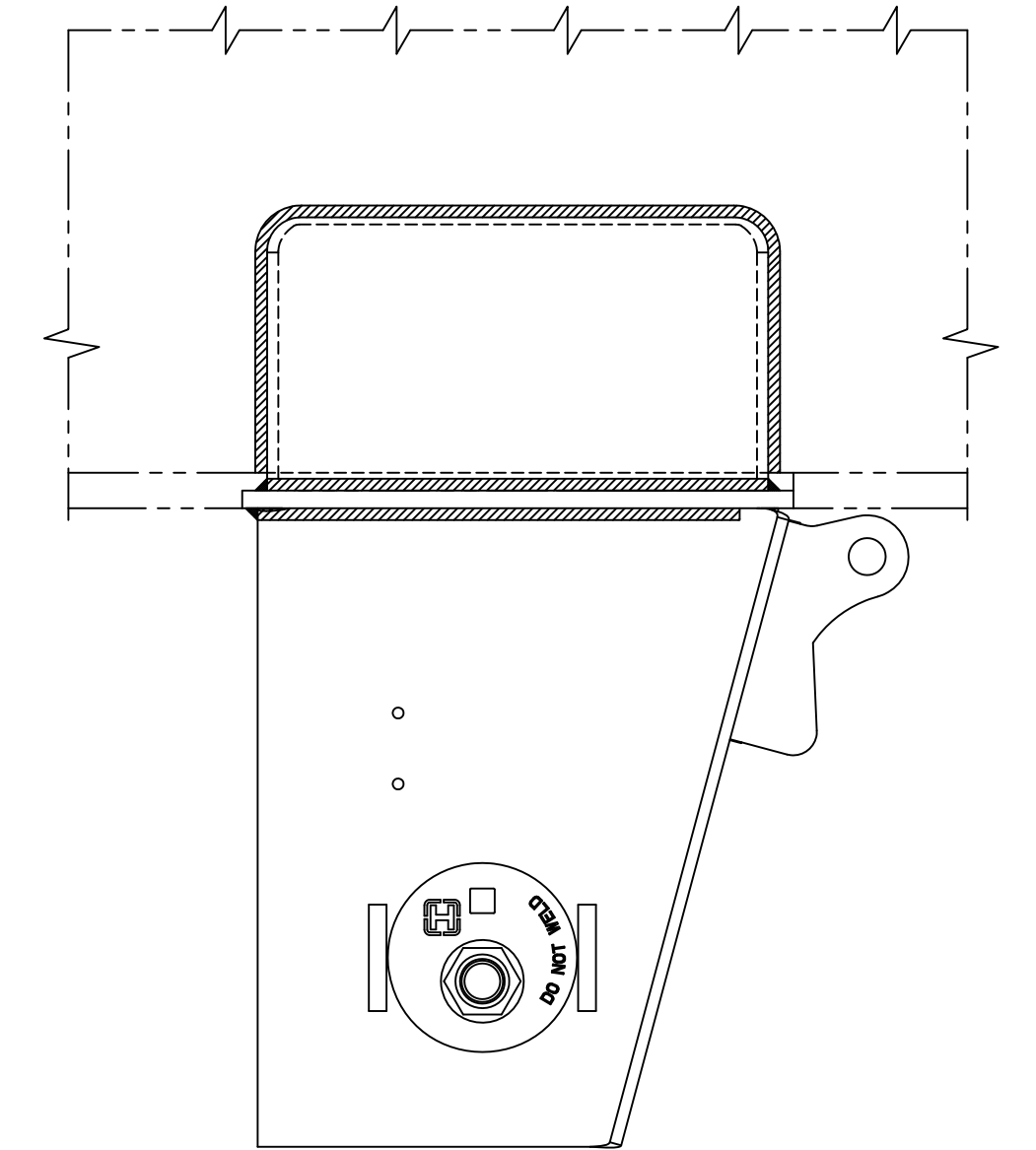
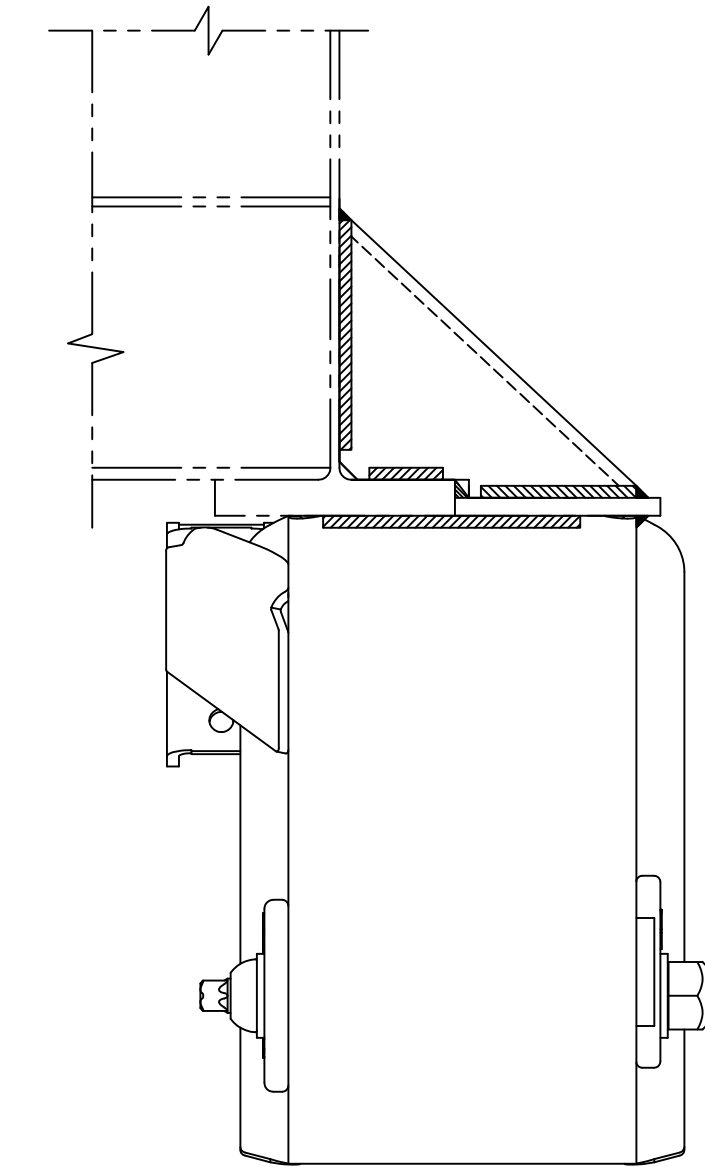
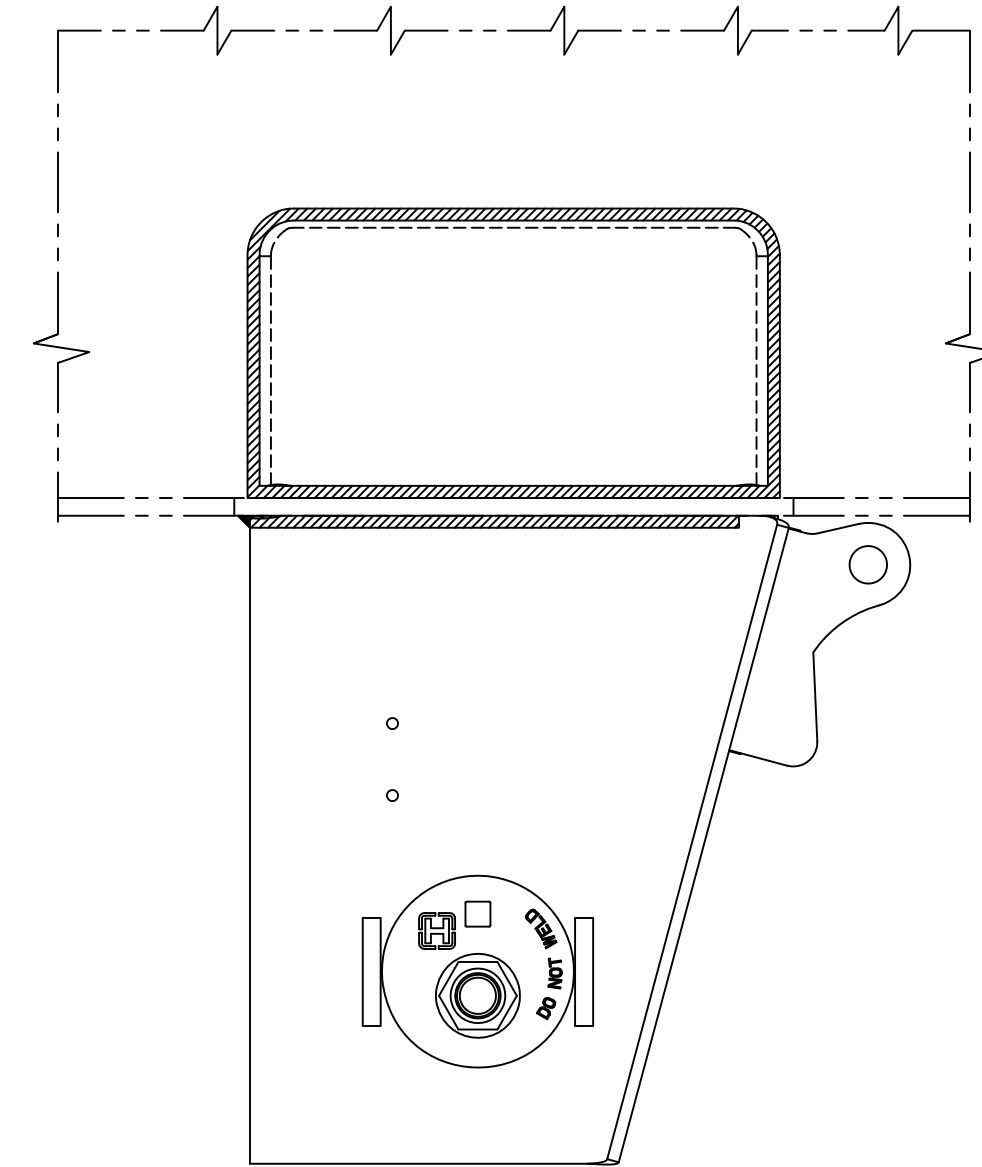
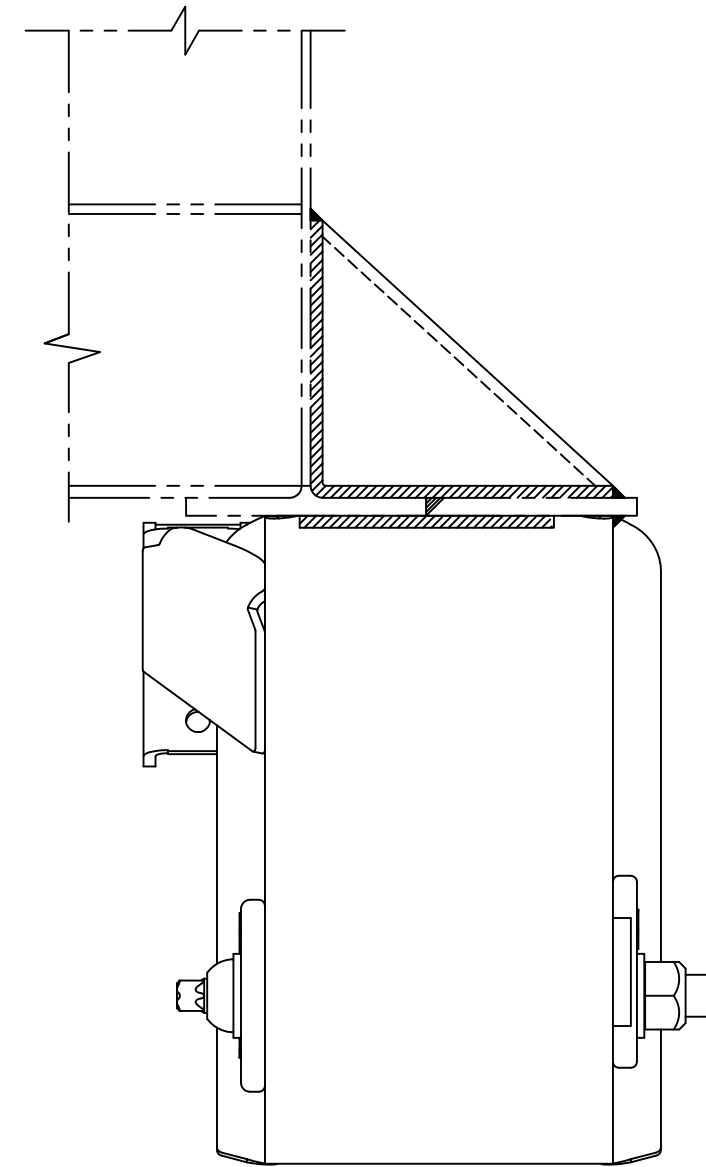
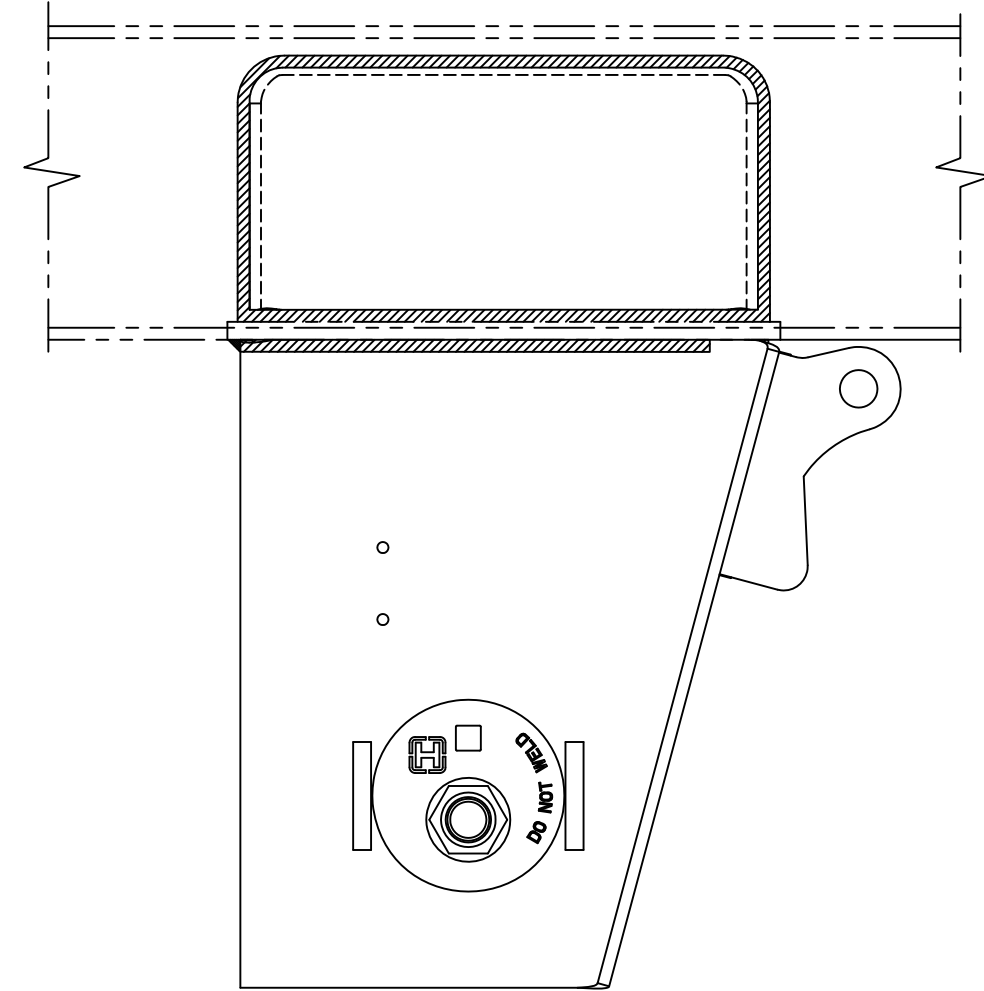
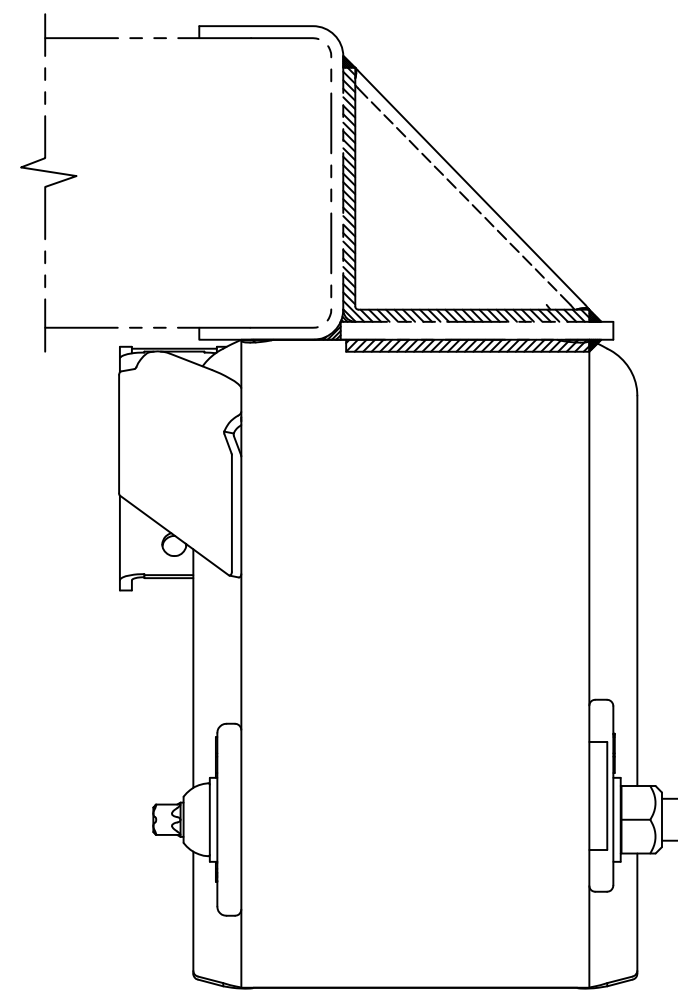
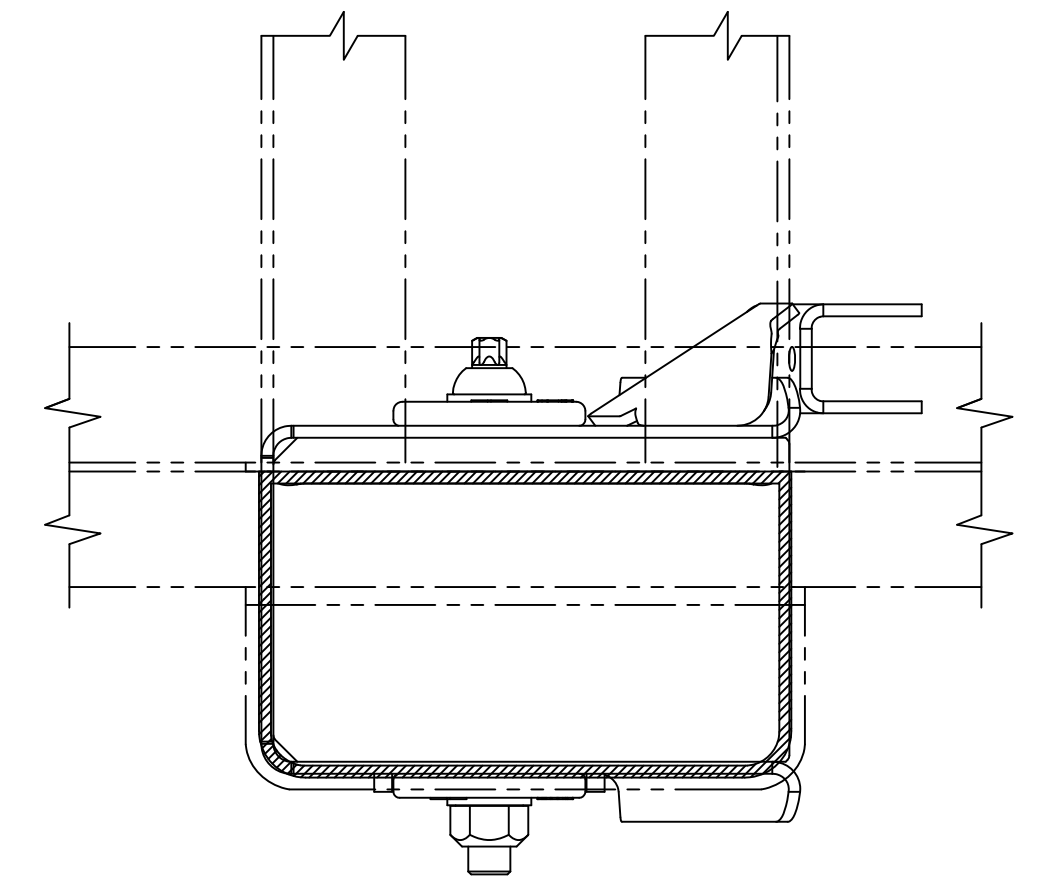
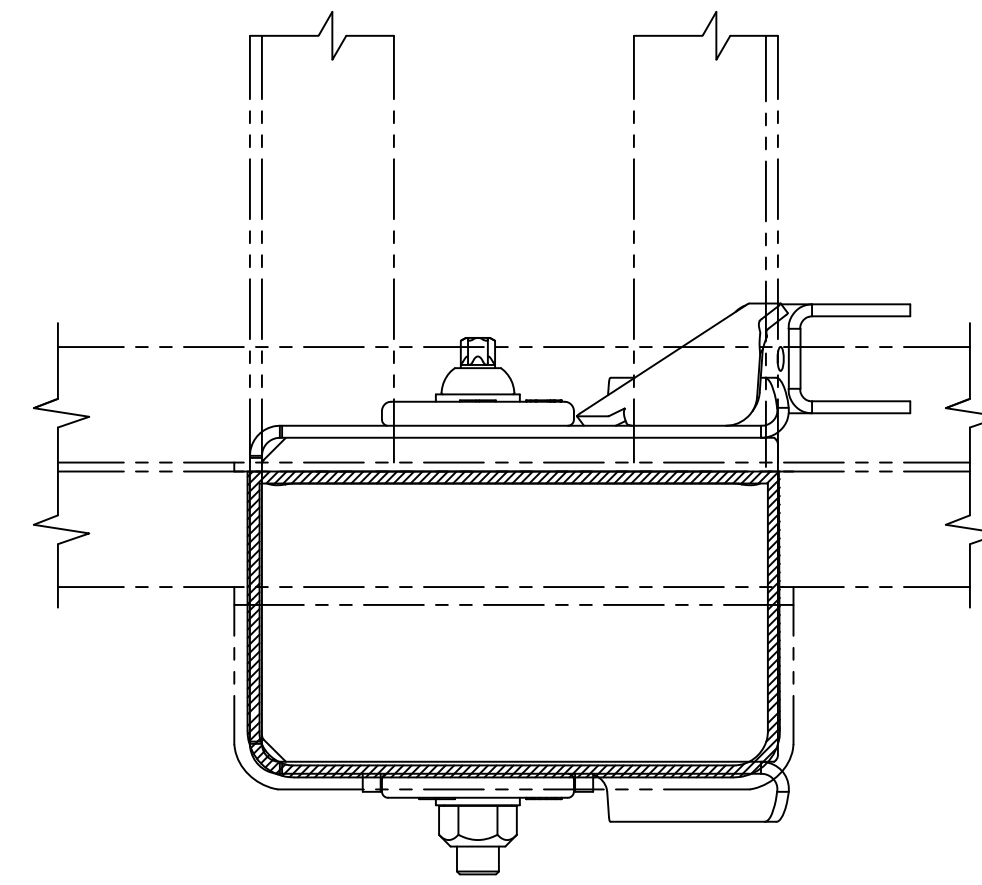
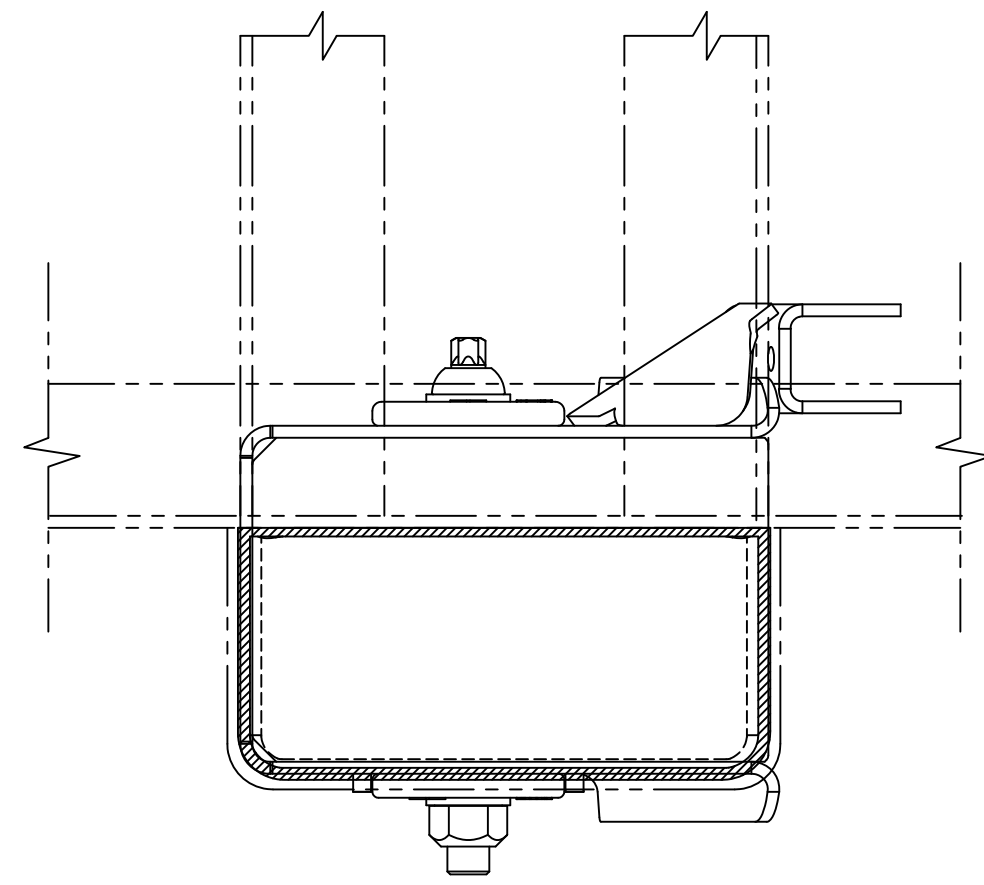
HT250US
INSTALLATION DRAWING

SCALE: 1:4
SIZE: D
PAGE: 5 OF 7
DRAWING NO.: D-25773

P
PRODUCTION

16

SUGGESTED METHOD OF SUPPORTING FRAME BRACKET OVERHANG



CHANNEL

THIN FLANGE I-BEAM

THICK FLANGE I-BEAM

This Print remains the property of Hendrickson. All information contained thereon is confidential. It is loaned, subject to return on demand and on express condition that it is not to be copied or used directly or indirectly for any purpose other than the purpose for which it has been loaned to you.

- NOTES:
1. PATTERN DENOTES WELD PLACEMENT.

 <small>TRAILER COMMERCIAL VEHICLE SYSTEMS 2070 INDUSTRIAL PLAGE S.E., CANTON, OH 44707-2800 U.S.A.</small>	<small>UNLESS OTHERWISE NOTED: TOLERANCES ARE: DIMENSIONS ARE: X: ± .005 INCHES XX: ± .010 INCHES XXX: ± .015 INCHES ANGULAR: ± .010 INCHES DIMENSIONS ADHERE TO ANSI Y14.5M-1982</small>	<small>REV. ECN NO. BY DATE</small> 15 33172 KJE 10-28-19	<small>DRAWN BY</small> K. ERDMANN 10-28-19 <small>CHK'D BY</small> J. HOFER <small>APP'D BY</small> S. BIRKEY	HT250US INSTALLATION DRAWING	<small>SCALE</small> 1:4 <small>SIZE</small> D <small>PAGE</small> 7 OF 7 <small>DRAWING NO.</small> D-25773	P PRODUCTION 16
	<small>THIS DRAWING IS THE CONFIDENTIAL PROPERTY OF HENDRICKSON</small>					