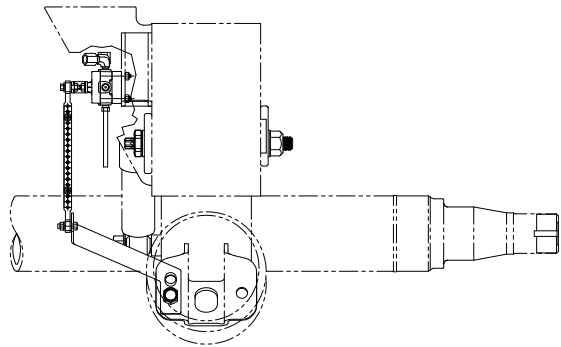
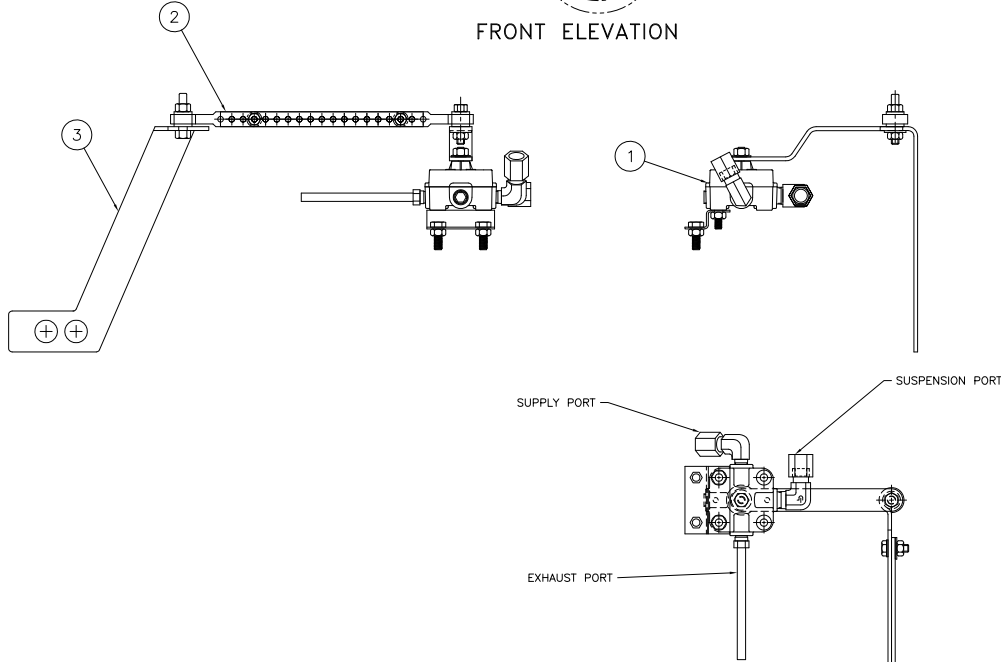


This Print remains the property of Hendrickson. All information contained thereon is confidential. It is loaned, subject to return on demand and on express condition that it is not to be copied or used directly or indirectly for any purpose other than the purpose for which it has been loaned to you.



FRONT ELEVATION



NOTES:

- DO NOT ADD LUBRICATION TO AIR SYSTEM.
- ALL CONNECTIONS MUST BE LEAK PROOF.
- AVOID BENDS IN AIR LINES.
- AIR LINE FITTINGS AND LINES TO BE FURNISHED BY INSTALLER. 3/8" O.D. POLYIMIDE TUBING RECOMMENDED.
- TRIM & BOLT LINKS AS REQ'D TO HOLD HEIGHT CONTROL VALVE IN NEUTRAL POSITION WHEN SUSPENSION IS AT RIDE HEIGHT.
- DO NOT OVER TIGHTEN LINK MOUNTING BOLTS. THE LINK SHOULD PIVOT FREELY ABOUT THE BOLT. THE LINK, WHEN PROPERLY INSTALLED, SHOULD APPEAR VERTICAL WHEN VIEWING IT FROM THE FRONT OF THE SUSPENSION.
- TO MAKE FINE ADJUSTMENTS IN RIDE HEIGHT LOOSEN HCV MOUNTING NUTS AND ROTATE VALVE BODY.
- ALL ITEMS SHIPPED UNASSEMBLED. FITTINGS, NUTS AND BOLTS TO BE PLACED IN A PLASTIC BAG.
- RECOMMENDED AIRLINE FITTING INSTALLATION TORQUE NOT TO EXCEED 7 FT-LB.

OPERATION :

VALVE ARM HORIZONTAL
FRAME IS AT PRESET HEIGHT
NO AIR FLOW OCCURRING.

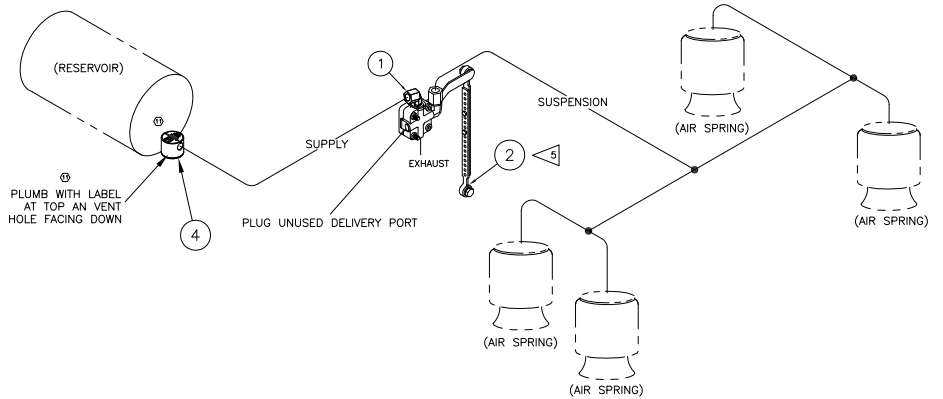
VALVE ARM DOWN
FRAME IS HIGH, AIR SPRINGS
ARE EXHAUSTED UNTIL ARM
IS HORIZONTAL.

VALVE ARM UP
FRAME IS LOW, AIR SPRINGS
ARE INFLATED UNTIL ARM
IS HORIZONTAL.

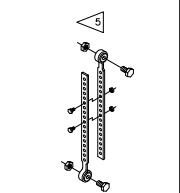
FUNCTION :

AUTOMATIC HEIGHT CONTROL.

BILL OF MATERIALS				
HCV WITHOUT DUMP				
		REVISION	10	11
ITEM	PART NO.	DESCRIPTION	QTY.	QTY.
1	A-28648	HCV - VALVE ONLY	1	1
2	A-14187	LINK ASSEMBLY - BOLTED	1	1
3	C-22477	BRACKET, HCV	1	1
4	B-38941	PRESSURE PROTECTION VALVE	-	1
*5	L-668	INSTALLATION INSTRUCTIONS	1	1
*6	DWG D-24604	NON DELAY HCV KITS FOR INTRAAX®	1	1
*7	A-34959	HCV SUB-KIT (#8)	1	1
* NOT SHOWN			WEIGHT:	2.00 2.17

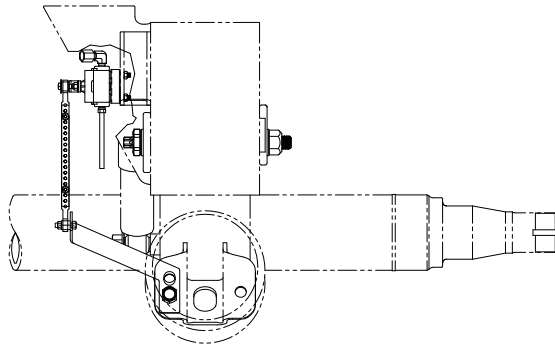


P
PRODUCTION

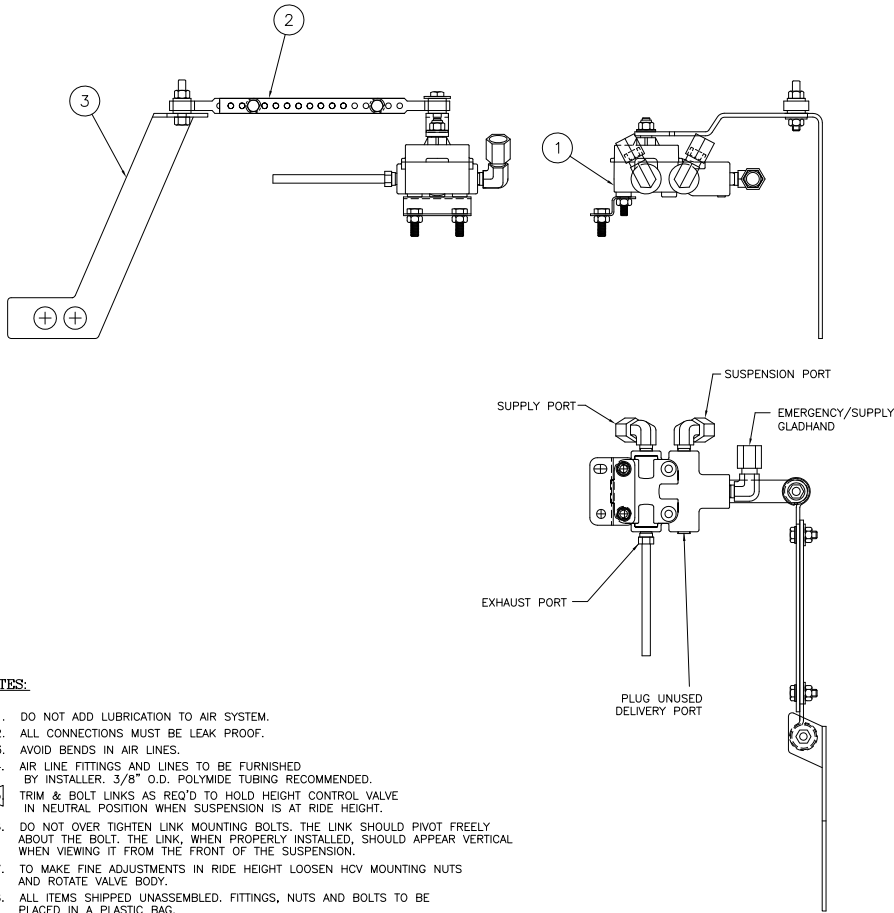


<p>HENDRICKSON</p> <p>TRAILER COMMERCIAL VEHICLE SYSTEMS 2915 Wadsworth, P.O. Box 51, Columbus, OH 43260-0051 USA</p>	<p>UNLESS OTHERWISE NOTED: TOLERANCES ARE: DIMENSIONS ARE IN INCHES</p> <p>30 ± .010 X30 ± .0150 ANGULAR: ± 0.5° DIMENSIONS REFER TO 2007 174.034-174034 (REV. 10)</p>	<p>11 23402 10 24094 8 23704 8 18078</p>	<p>REV. BY L. MILSON G. SHERKLE J. CERVANTEZ</p>	<p>DATE 02-25-10 06-22-12 08-24-14 08-25-10</p>	<p>SCALE NTS D 1 OF 2</p>	<p>NON DELAY HCV KITS FOR INTRAAX®</p>	<p>D-24604</p>
--	--	--	--	---	---------------------------------------	--	----------------

This Print remains the property of Hendrickson. All information contained thereon is confidential. It is loaned, subject to return on demand and on express condition that it is not to be copied or used directly or indirectly for any purpose other than the purpose for which it has been loaned to you.



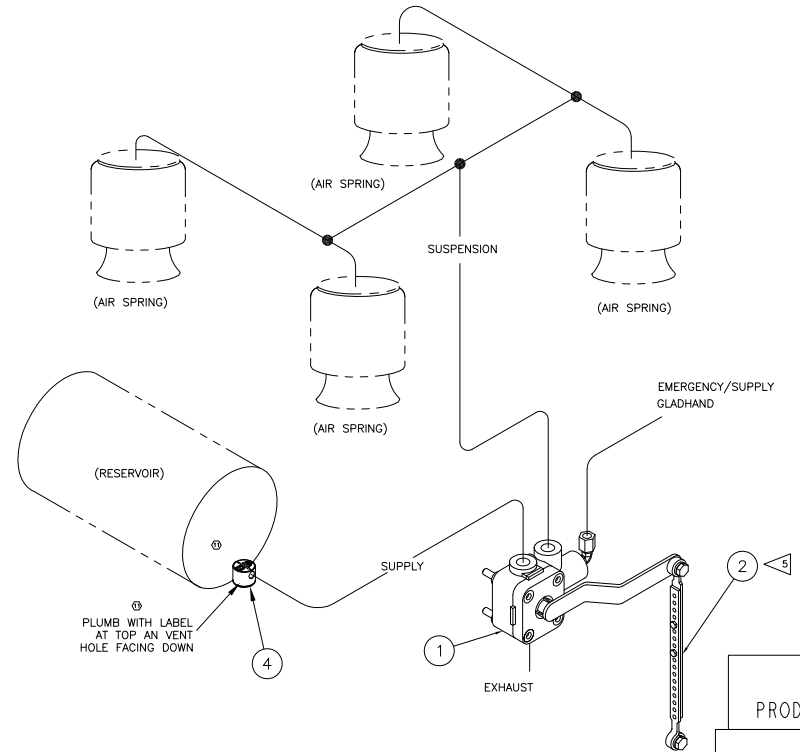
FRONT ELEVATION



NOTES:

1. DO NOT ADD LUBRICATION TO AIR SYSTEM.
2. ALL CONNECTIONS MUST BE LEAK PROOF.
3. AVOID BENDS IN AIR LINES.
4. AIR LINE FITTINGS AND LINES TO BE FURNISHED BY INSTALLER. 3/8" O.D. POLYIMIDE TUBING RECOMMENDED.
5. TRIM & BOLT LINKS AS REQ'D TO HOLD HEIGHT CONTROL VALVE IN NEUTRAL POSITION WHEN SUSPENSION IS AT RIDE HEIGHT.
6. DO NOT OVER TIGHTEN LINK MOUNTING BOLTS. THE LINK SHOULD PIVOT FREELY ABOUT THE BOLT. THE LINK, WHEN PROPERLY INSTALLED, SHOULD APPEAR VERTICAL WHEN VIEWING IT FROM THE FRONT OF THE SUSPENSION.
7. TO MAKE FINE ADJUSTMENTS IN RIDE HEIGHT LOOSEN HCV MOUNTING NUTS AND ROTATE VALVE BODY.
8. ALL ITEMS SHIPPED UNASSEMBLED. FITTINGS, NUTS AND BOLTS TO BE PLACED IN A PLASTIC BAG.
9. RECOMMENDED AIRLINE FITTING INSTALLATION TORQUE NOT TO EXCEED 7 FT-LB.

BILL OF MATERIALS				
HCV WITH DUMP				
		REVISION	AKHD-238-3	AKHD-238F-3
ITEM	PART NO.	DESCRIPTION	QTY.	QTY.
1	A-29393	HCV W/DUMP	1	1
2	A-14187	LINK ASSEMBLY - BOLTED	1	1
3	C-22477	BRACKET, HCV	1	1
4	B-38941	PRESSURE PROTECTION VALVE	1	1
*5	L-373	CAUTION STICKER	1	1
*6	DWG D-24604	NON DELAY HCV KITS FOR INTRAAX®	1	1
*7	L-668	INSTALLATION INSTRUCTIONS	1	1
*8	A-34960	HCV SUB-KIT (#9)	1	1
*9	A-29874	HCV SUB-KIT (#5)	1	-
* NOT SHOWN			WEIGHT:	2.58
				2.25



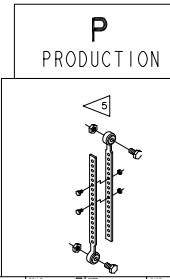
OPERATION :

VALVE ARM HORIZONTAL
FRAME IS AT PRESET HEIGHT
NO AIR FLOW OCCURRING.

VALVE ARM DOWN
FRAME IS HIGH, AIR SPRINGS
ARE EXHAUSTED UNTIL ARM
IS HORIZONTAL.

VALVE ARM UP
FRAME IS LOW, AIR SPRINGS
ARE INFLATED UNTIL ARM
IS HORIZONTAL.

FUNCTION :
AUTOMATIC HEIGHT CONTROL,
AUTOMATIC SUSPENSION DUMP.



<p>HENDRICKSON TRAILER COMMERCIAL VEHICLE SYSTEMS 2015 14th Street, P.O. Box 1000, Lincoln, NE 68501-1000 USA</p>	<p>UNLESS OTHERWISE NOTED: TOLERANCES ARE: FRACTIONS DECIMALS X.X ± .1 X.XX ± .05 X.XXX ± .015 ANGULAR ± 0.5° DIMENSIONS AGREE TO ASME Y14.5M-1994 (REV. 1995)</p>	<p>11 24602 REV 02-25-10 10 24594 REV 06-22-12 8 23704 REV 08-24-14 8 18078 REV 08-25-10</p>	<p>DESIGNED BY: L. MILSON CHECKED BY: G. SENEKLE DATE: 2-5-99 APPROVED BY: J. CERVANTES</p>	<p>11-11-98 THE NAME IS THE PROPERTY OF HENDRICKSON</p>	<p>NON DELAY HCV KITS FOR INTRAAX® D-24604</p>	<p>SCALE: NTS DATE: 11/11/98 PAGE: 2 OF 2</p>
--	--	--	---	---	--	---