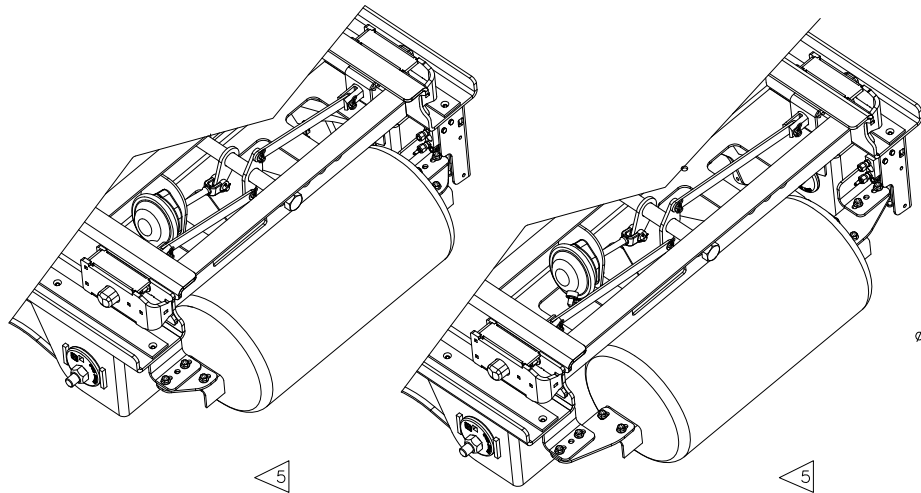


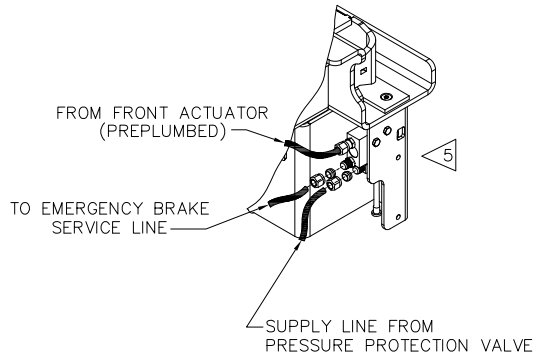
37" & 38" SLIDER

43" & 44" SLIDER



- NOTE:
- FOR TRAILER WIDTHS OF 37" OR 38" USE TANK BRACKET KIT S-27742-1. (NOTE SHORT BRACKET) FOR TRAILER WIDTHS OF 43" OR 44" USE TANK BRACKET KIT S-27742-2. (NOTE LONG BRACKET) (BOTH -1 AND -2 KITS WILL WORK FOR EITHER 1488 CU. IN. OR 2800 CU. IN. TANKS)
 - KITS ARE DESIGNED FOR 27.50" MTG. CENTERS FOR A 1488 CU. IN. TANK AND 29.50" MTG. CENTERS FOR A 2800 CU. IN. TANK.
 - THE 1488 CU. IN. TANK IS SHOWN ABOVE WITH RESPECT TO TRAILER WIDTHS. OTHER HOLES PROVIDED IN THE BRACKETS WILL ACCOMMODATE THE USE OF A 2800 CU. IN. TANK BUT GRAPHICALLY WILL LOOK DIFFERENT THAN ABOVE.
 - WITH TANK MOUNTED TO THE FRONT OF THE SLIDER BOX, A MINIMUM OF 52" AXLE SPACING IS REQUIRED WHEN BUTTED UP AGAINST THE REAR OF A STATIONARY SUSPENSION.

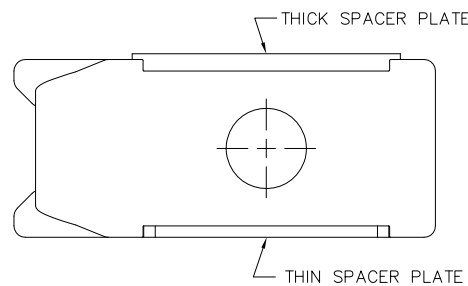
AIR TANK INSTALLATION



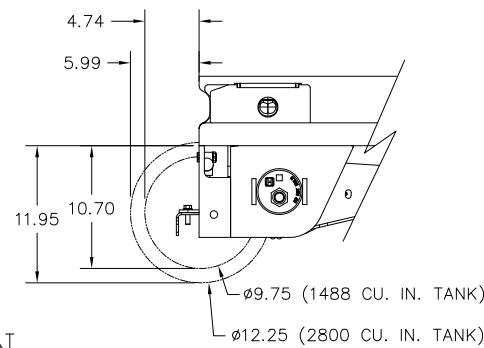
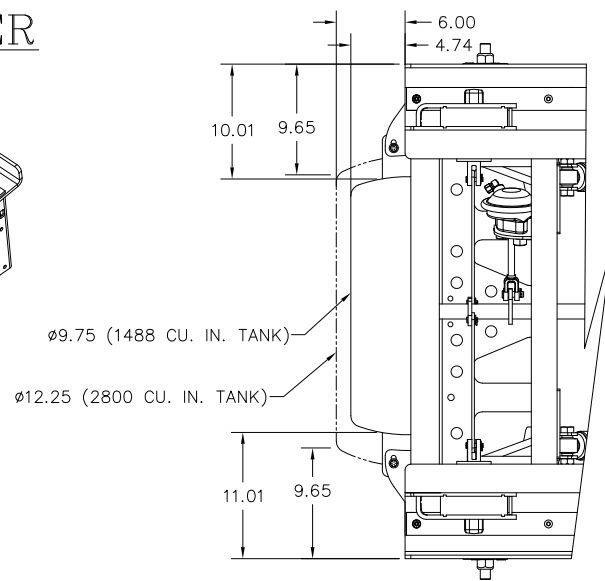
PLUMBING DETAIL

PIN CAGE PLACEMENT

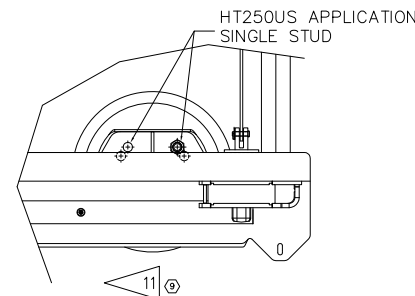
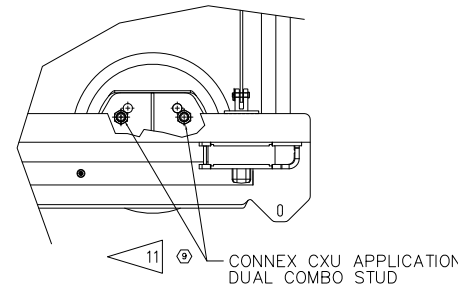
- NOTE:
- PIN CAGES HAVE A THICK SPACER PLATE AND A THIN SPACER PLATE:
 THE THICK SPACER PLATE MUST BE DOWN WHEN BOTTOM FLANGE OF TRAILER I-BEAM IS .500 THK. OR LESS.
 THE THIN SPACER PLATE MUST BE DOWN WHEN BOTTOM FLANGE OF TRAILER I-BEAM IS GREATER THAN .500 THK. BUT DOES NOT EXCEED .750 THK.
 - IF PIN CAGES NEED FLIPPED:
 WHEN GOING FROM ONE THICKNESS TO THE OTHER, THE FRONT PIN CAGE IS FLIP AND MOVED TO THE REAR PIN CAGE LOCATION.
 THE REAR PIN CAGE IS FLIPPED AND MOVED TO THE FRONT PIN CAGE LOCATION.



This Print remains the property of Hendrickson. All information contained thereon is confidential. It is loaned, subject to return on demand and on express condition that it is not to be copied or used directly or indirectly for any purpose other than the purpose for which it has been loaned to you.

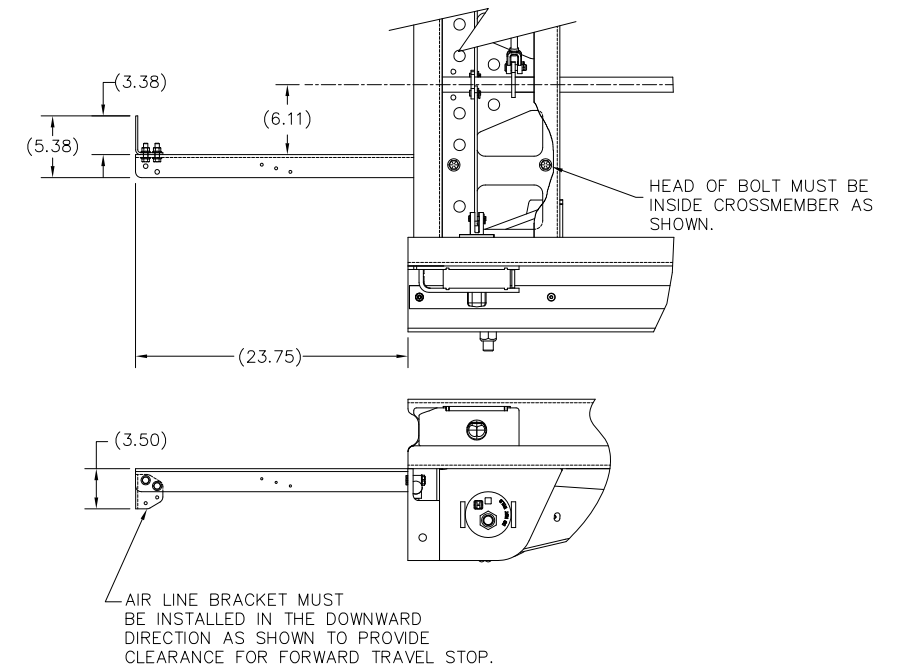


CONNEX CXU AIR SPRING INSTALLATION

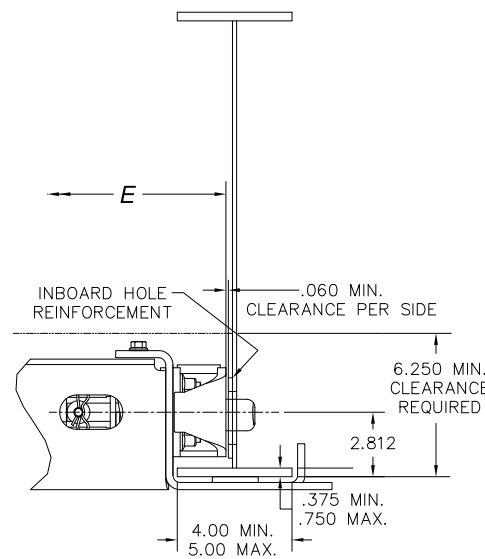


HT250US AIR SPRING INSTALLATION

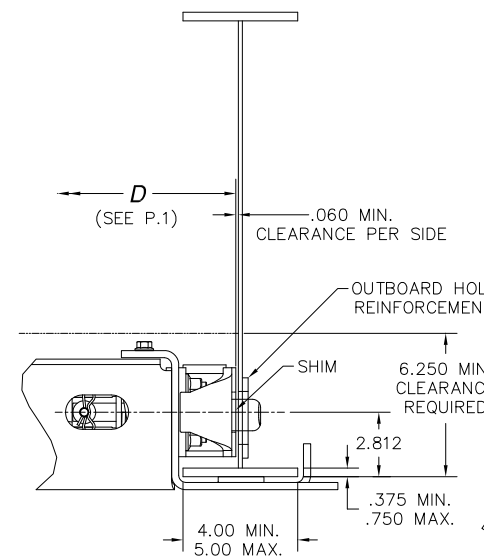
STINGER INSTALLATION



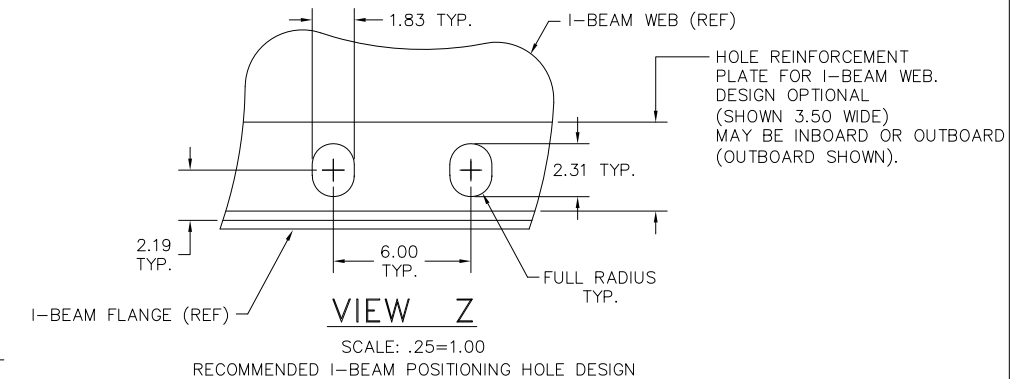
TRAILER FRAME REQUIREMENTS



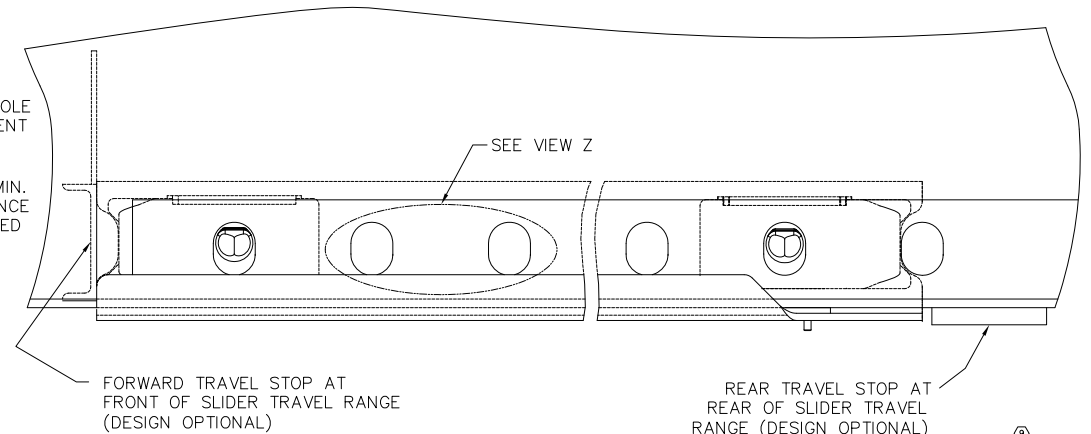
FRONT VIEW
 INBOARD HOLE REINFORCEMENTS
 SCALE: .25=1.00
 ORDER SLIDER WITH NO SHIMS ON OUTER LOCK PIN CAGES.



FRONT VIEW
 OUTBOARD HOLE REINFORCEMENTS
 SCALE: .25=1.00
 ORDER SLIDER WITH SHIMS ON OUTER LOCK PIN CAGES.



- NOTE: HORIZONTAL DIMENSIONS MUST BE MAINTAINED AS SHOWN. VERTICAL DIMENSIONS SHOWN ARE OPTIONAL, BUT ARE RECOMMENDED FOR THE FOLLOWING REASONS:
- ALLOWS HOLE POSITION ON WEB TO BE IDENTICAL FOR ANY FLANGE THICKNESS FROM 3/8" TO 3/4".
 - ALLOWS DIRECT CONTACT BETWEEN I-BEAM FLANGE AND BOTTOM SIDE OF OUTER LOCK PIN CAGES WHEN TRAILER IS LIFTED BY FRAME.



FORWARD TRAVEL STOP AT FRONT OF SLIDER TRAVEL RANGE (DESIGN OPTIONAL)

REAR TRAVEL STOP AT REAR OF SLIDER TRAVEL RANGE (DESIGN OPTIONAL)

© P PRODUCTION

RIDE HEIGHT	◁3 JOUNCE	◁3 REBOUND	BUMPER CONTACT	M	N	P	◁4 S	◁4 R	**SUSPENSION WEIGHT (LB)
5.5	2.1	4.7	1.6	8.0	18.85	47.10	3.4	10.2	275.21
6.5	3.1	3.7	2.6		18.96				
7.5	3.2	6.3	2.7	10.0	18.85	47.10	4.3	13.8	276.21
9.0	4.7	4.8	4.2		19.00				

This Print remains the property of Hendrickson. All information contained thereon is confidential. It is loaned, subject to return on demand and on express condition that it is not to be copied or used directly or indirectly for any purpose other than the purpose for which it has been loaned to you.

RIDE HEIGHT	* SLIDER BOX WEIGHT (LB)			
	I-BEAM CENTERS			
	37"	38"	43"	44"
5.5	360.59	362.79	373.79	376.00
6.5				
7.5	376.27	378.47	389.47	391.68
9.0				

* BOX WEIGHT INCLUDES: SLIDER BOX WELDMENT WITH FRAME BRACKETS, LOCK PINS AND ALL PIN PULL COMPONENTS (INCLUDING ACTUATOR VALVE, FITTINGS, ETC.) AND NO SHIMS (FOR TRAILERS WITH INTERNAL WEB REINFORCEMENT AT LOCK PIN HOLES).

** SUSPENSION WEIGHT INCLUDES: BEAMS, BUSHINGS, PIVOT CONNECTION COMPONENTS, AIR SPRING COMPONENTS AND SHOCK ABSORBER COMPONENTS.

**** OPTION WEIGHT ADDITION (LB)		
OPTIONAL COMPONENT	I-BEAM CENTERS	
	37" & 38"	43" & 44"
SHIMS ON BOX (FOR EXTERNAL WEB HOLE REINFORCEMENT)	5.72	
HIGH-DAMPING SHOCKS	2.20	
SHOCK STRAPS	1.06	
AKH-236-3 HCV KIT (BOLTED LINK)	2.31	
STINGER KIT (23.75" LG)	10.02	
SPRAY GUARD MTG. ANGLE KIT	23.8	25.3
AIR TANK BRACKET KIT (2800 C.I. TANK)	2.26	3.24
AIR TANK BRACKET KIT (1488 C.I. TANK)		

NOTES:

- TO OBTAIN TOTAL SYSTEM WEIGHT, ADD ONE ITEM EACH FROM SLIDER BOX AND SUSPENSION PLUS ALL APPLICABLE OPTION WEIGHTS FROM OPTION WEIGHT TABLE.
- CONTACT HENDRICKSON FOR ALLOWABLE RIDE HEIGHT RANGES.
- ◁3 JOUNCE AND REBOUND DIMENSIONS CHANGE AS THE RIDE HEIGHT CHANGES FROM THE NOMINAL POSITION.
- ◁4 DIMENSIONS "S" & "R" WILL REMAIN CONSTANT REGARDLESS OF RIDE HEIGHT VARIATION FROM NOMINAL POSITION.
- RIDE HEIGHT - JOUNCE = "S"
RIDE HEIGHT + REBOUND = "R"

9 P PRODUCTION