

# **H** PARTS LIST

## STEERTEK™ NXT High Capacity Steer Axle System for Ferrara Fire/Rescue Vehicles

LIT NO: SP-335

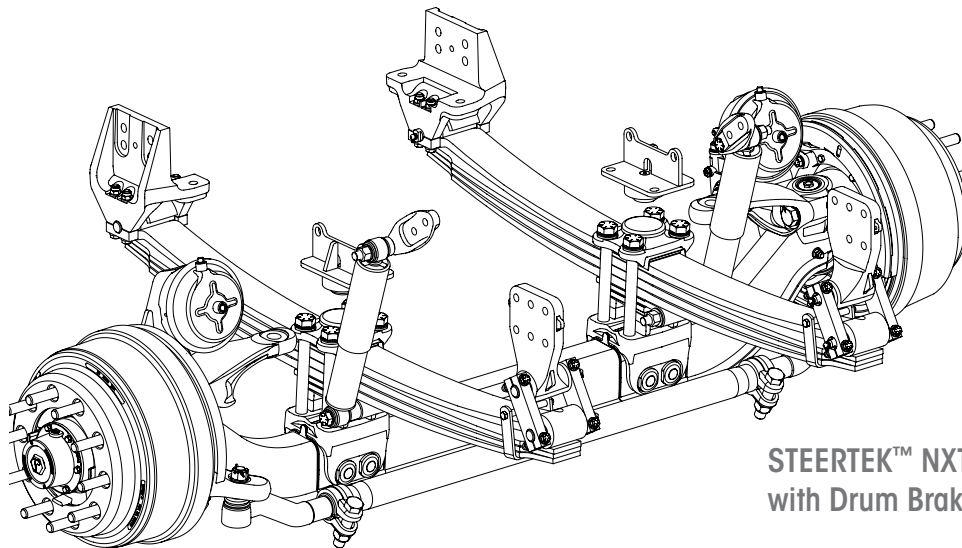
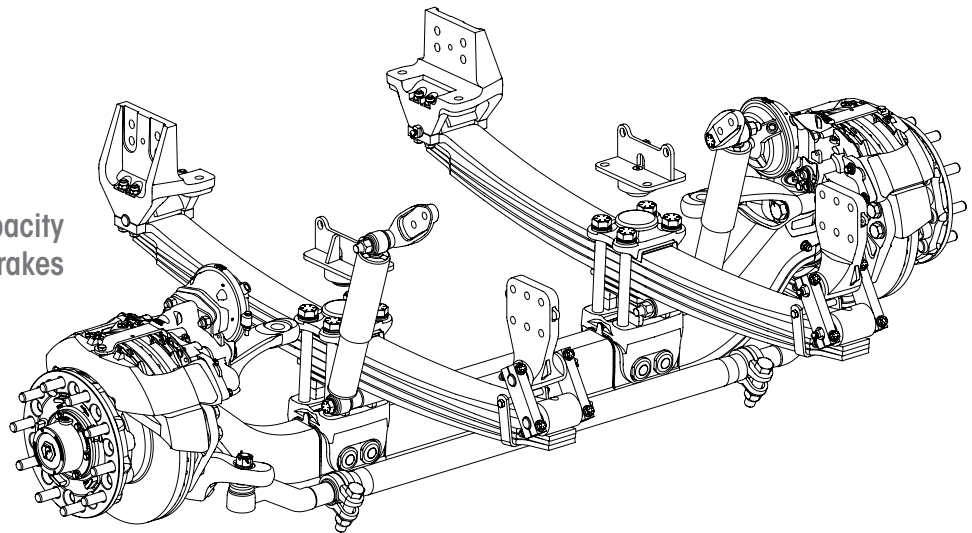
DATE: May 2020

REVISION: A

### CONTENTS

DESCRIPTION	PAGE	DESCRIPTION	PAGE
Parts Lists		Selection Guide . . . . .	6
■ Suspension • Axle • Clamp Group Assembly	2	Special Tool . . . . .	6
■ Disc Brake Assembly . . . . .	4		
■ Drum Brake Assembly . . . . .	5		

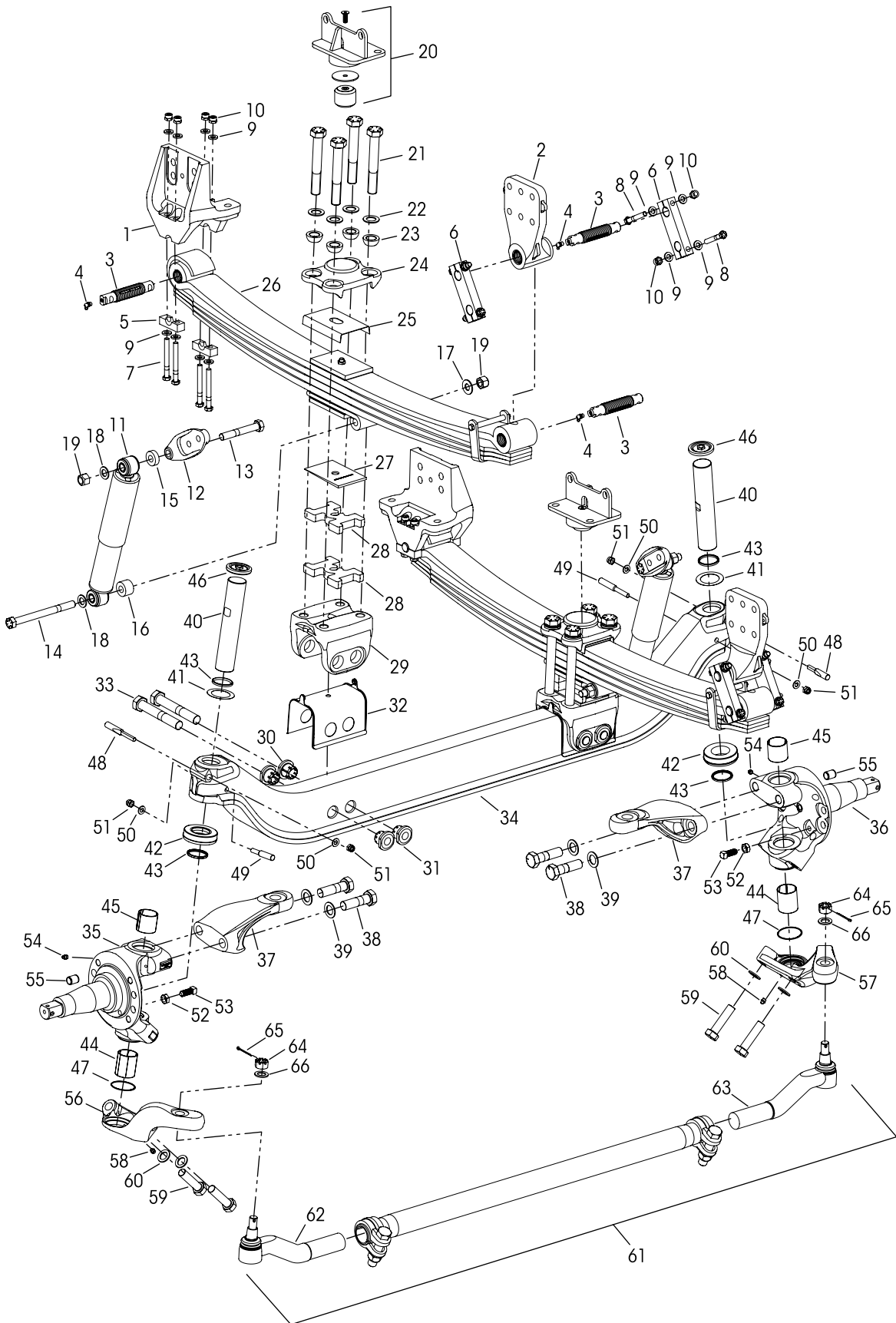
STEERTEK™ NXT High Capacity  
with Air Disc Brakes



STEERTEK™ NXT High Capacity  
with Drum Brakes



Suspension • Clamp Group • Axle Assembly





# STEERTEK™ NXT High Capacity Steer Axle System for Ferrara Vehicles

			VEHICLE				VEHICLE
KEY NO.	PART NO.	DESCRIPTION	QTY.	KEY NO.	PART NO.	DESCRIPTION	QTY.
1	79894-004	Frame Hanger Assembly Front	2	33		*1"-8 UNC x 6½" Hex Thru Bolt	4
2	80159-003	Rear with Bushing	2	34	91844-XXX	STEERTEK NXT Axle Fire and Rescue, Includes Key Nos. 35-66, <i>See Table 1 below</i>	1
	34013-247	<b>Frame Hanger Fastener Service Kit, One Side</b> Front, Includes Key Nos. 5, 7, 9-10				Knuckle Assembly, Includes Key Nos. 43, 52-55	
	34013-248	Rear, Includes Key Nos. 3-4, 6, 8-10		35	77243-001	Left Hand	1
	34013-249	<b>Single Threaded Pin and Grease Zerk Service Kit, Includes Key Nos. 3-4</b>		36	77243-002	Right Hand	1
3		*Threaded Pin	6	37	79685-003	Steering Arm	2
4		*Grease Zerk	6	38	30550-027	1"-14 UNF x 3½" Hex Bolt	4
5	79843-000	Front Hanger Bottom Cap	4	39	22962-051	1" Flat Washer	4
6	79888-001	Rear Shackles	4		34013-230	<b>Kingpin Service Kit, One Side</b> Includes Key Nos. 40, 41 a, 42-51, 59-60	
7	80362-001	½"-20 UNC x 4½" Hex Bolt	8	40	75923-001	Kingpin	2
8	80362-002	½"-20 UNC x 3¼" Shackle Hex Bolt	8	41		Kingpin Shim (As needed for service)	2
9	22962-014	½" Flat Washer	32	a	77241-002	0.01" Thickness	
10	17700-034	½"-20 UNC Nut	16	b	77241-003	0.02" Thickness	
11	80606-001L	Shock Absorber	2	42	75918-001	Thrust Bearing	2
12	78250-002	Shock Bracket	2	43	75966-001	Kingpin Seal	4
13	50764-008	¾"-10 UNC x 5" Upper Shock Hex Bolt	2			Kingpin Bushing	
14	50764-014	¾"-10 UNC x 8½" Lower Shock Hex Bolt	2	44	75919-001	Lower, 2½" Length	2
		Shock Spacer		45	75919-002	Upper, 2" Length	2
15	59946-006	Upper, 13.2 mm Thick	2	46	77209-001	Grease Cap	2
16	59946-015	Lower Outboard, 28 mm Thick	2	47	68303-004	O-Ring	2
17	59946-005	Lower Inboard, 3 mm Thick	2			Kingpin Draw Key	
18	22962-001	¾" Flat Washer	4	48	75925-001	Upper, 3¾" Length	2
19	49842-000	¾"-10 UNC Nut	4	49	75925-002	Lower, 4¾" Length	2
20		Jounce Stop Assembly		50	22962-054	7/16" Flat Washer	4
	79855-000	Left Hand	1	51	17700-008	7/16"-14 UNC-2B Nut	4
	79854-000	Right Hand	1	52	17491-023	5/8"-11 UNC-2B Jam Nut	2
	91843-XXX	Leaf Spring & Clamp Group Assembly, Includes Key Nos. 21-33, <i>See Table 2 on Page 6</i>	2	53	80183-000	5/8"-11 UNC x 1½" Set Screw	2
	34013-XXX	<b>Clamp Group Service Kit, One Side, Includes Key Nos. 21-23 &amp; 25, <i>See Table 2 on Page 6</i></b>		54	33117-000	Grease Zerk	2
21	64107-XXX	1"-8 UNC Hex Bolt, <i>See Table 2 on Page 6</i>	8	55	64246-000	ABS Sensor Sleeve	2
22	22962-051	1" Flat Washer ( <i>if equipped</i> ) <i>See Table 2 on Page 6</i>	8		77244-XXX	Tie Rod Arm Assembly, Includes Key No. 58 <i>See Table 1 below</i>	
23	78356-002	1" Spherical Washer	8	56		Left Hand	1
24	78888-000	Top Pad	2	57		Right Hand	1
25	79273-001	Spring Liner	2	58	33117-000	Grease Zerk	2
26		Leaf Spring Assembly, <i>See Table 2 on Page 6</i>	2	59	30418-014	7/8"-14 UNF x 3½" Hex Bolt	4
27	80143-001	Caster Wedge - 2°	2	60	22962-002	7/8" Flat Washer	4
28		Leaf Spring Spacer ( <i>if equipped</i> ) <i>See Table 2 on Page 6</i>	4	61	79365-001	Tie Rod Assembly, 20K Drop, Includes Key Nos. 62-64	1
29	77232-000	Axle Seat	2			<b>Tie Rod End Service Kits,</b>	
	34013-229	<b>Axle Clamp Collar Service Kit, One Side</b> Includes Key Nos. 30-33			60961-884	Axle Set, Includes Kit Nos. 60961-882 and -883	
		*Axle Collar			60961-882	Left Hand, Includes Key Nos. 62, 64-66	
30		Non Threaded	4		60961-883	Right Hand, Includes Key Nos. 63-66	
31		Threaded	4			Tie Rod End, Includes Key No. 64	
32	78887-001	Axle Seat Liner	2	62	79366-001	Left Hand	1
				63	79366-002	Right Hand	1
				64		*7/8"-14 UNF-2A Castle Nut	2
				65	17800-004	Cotter Pin	2
				66	22962-002	7/8" Flat Washer	2

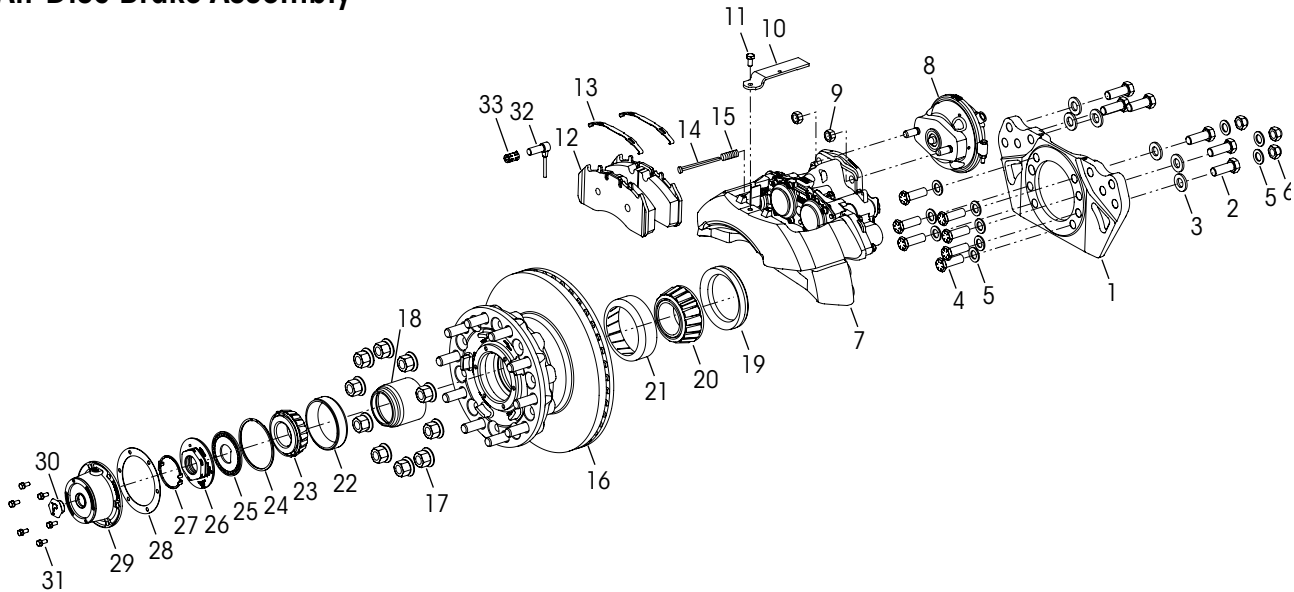
**NOTE:** \* Item included in kit/assembly only, part not sold separately.

**Table 1 Axle and Tie Rod Arm Assembly**

Wheelbase	STEERTEK NXT	Tie Rod Arm Assembly	
	Axle Assembly Key No. 34	Left Hand Key No. 56	Right Hand Key No. 57
140-170"	91844-002	77244-057	77244-058
171-200"	91844-004	77244-059	77244-060
201-230"	91844-006	77244-061	77244-062
231-270"	91844-008	77244-063	77244-064



**Air Disc Brake Assembly**

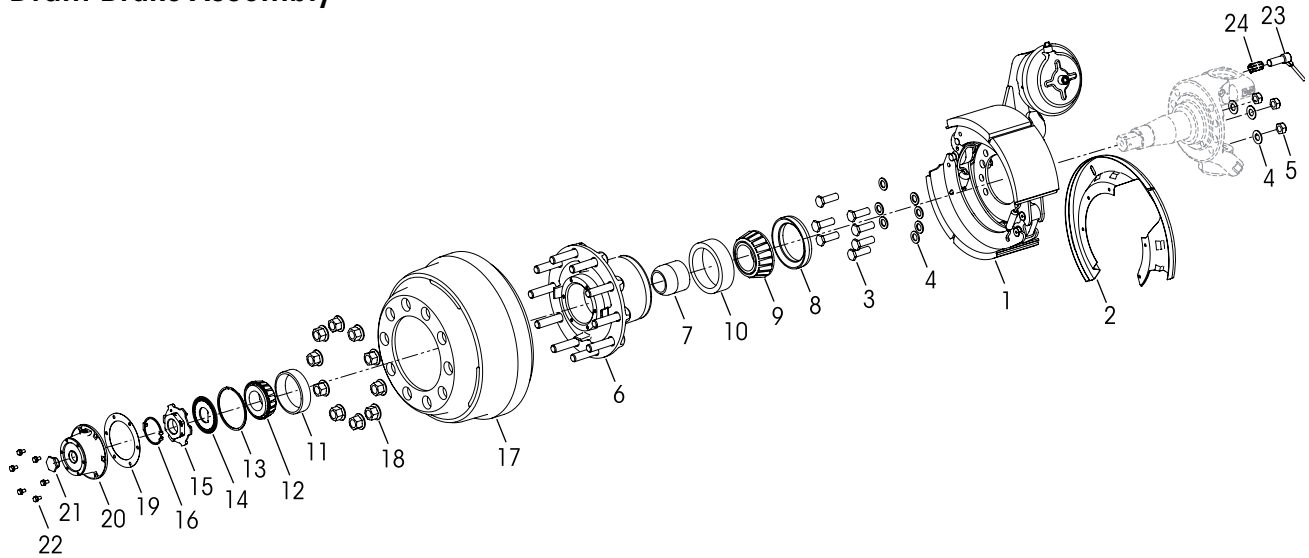


KEY NO.	PART NO.	DESCRIPTION	VEHICLE QTY.
1		*Meritor Torque Plate Assembly Left Hand, Part No. 3215-F-1878 Right Hand, Part No. 3215-E-1877	1 1
2	69781-002	M20 x 55 mm Hex Head Bolt	12
3	58246-039	M20 Flat Washer	12
4	80345-004	3/4"-16 UNC x 2 1/4" Low Profile Hex Head Bolt	14
5	22962-001	3/4" Flat Washer	20
6	80691-001	3/4"-16 UNC Hex Nut	6
7		*Meritor Air Disc Brake Caliper Assembly, Includes Key Nos. 10-11, 14-15 Left Hand, Part No. EX225H202XX000S Right Hand, Part No. EX225H201XX000S	1 1
8		*WABCO Air Brake Chamber MGM T24L, Includes K80131-001 Key No. 9 Left Hand, Part No. 423 506 1340 Right Hand, Part No. 423 506 1350	1 1
9		*Hex Nut *Meritor Disc Pad Retainer Kit No. 22510, Includes Key Nos. 10-11	4
10		*Pad Retainer	
11		*Pad Retainer Bolt *Meritor Air Disc Brake Pad Kit No. 2252H2CG, Includes Key Nos 12-13	
12		*Air Disc Brake Pad	
13		*ADB Pad Spring *Meritor Wear Indicator Kit No. 225255, Includes Key Nos. 14-15	
14		*Wear Indicator	
15		*Wear Indicator Spring	

KEY NO.	PART NO.	DESCRIPTION	VEHICLE QTY.
16		*Conmet Hub and Rotor Assembly Part No. 10083224, Includes Bearings and Seals *Conmet Brake Rotor Replacement Kit No. 10082181, One Wheel End, Includes Rotor and 10 of each Cap Screws and Washers	2
17		**M22 x 1.5 Two-piece Wheel Nut *Conmet Hub Bearing Rebuild Kit No. 10081728, One Wheel End, Includes Key Nos. 18-23 *Conmet Wheel Seal Kit No. 10081519, One Wheel End, Includes Key Nos. 18-19	20
18		*Bearing Spacer Part No. 10034342	
19		*Wheel Seal Part No. 10045883	
20		*Inner Bearing Cone Part No. 10041922	
21		*Inner Bearing Cup Part No. 10041921	
22		*Outer Bearing Cup Part No. 10041923	
23		*Outer Bearing Cone Part No. 10041924 *Conmet Preset Plus FL Nut Assembly Kit No. 10036550, Includes Key Nos. 24-27	
24		*Snap Ring - Double Wind Part No. 10033288	
25		*Spindle Nut Lockwasher Part No. 10031171	
26		*Outer Spindle Nut Part No. 10031170	
27		*Snap Ring Retainer Part No. 10031172	
28		*Federal-Mogul Hub Cap Gasket No. G-3009	2
29		*Federal-Mogul Hub Cap Part No. 343-009, Includes Key No. 30	2
30		*Rubber Plug	
31	64545-002	5/16"-18 UNC x 3/4" Hex Bolt with Retained Washer	12
32		*WABCO ABS Sensor Part No. 441-032-900-0	2
33	64550-000	ABS Sensor Clip	2



## Drum Brake Assembly



KEY NO.	PART NO.	DESCRIPTION	VEHICLE QTY.	KEY NO.	PART NO.	DESCRIPTION	VEHICLE QTY.
1		*Meritor Drum Brake Foundation Kit, Includes Key No. 2 Left Hand, Part No. QP4-1656-2323 Right Hand, Part No. QP4-1656-2324	1 1	10		*Inner Bearing Cup Part No. 10041921	
2		*Dust Shield	2	11		*Outer Bearing Cup Part No. 10041923	
3	80345-004	3/4"-16 x 2 1/4" Low Profile Hex Head Bolt	14	12		*Outer Bearing Cone Part No. 10041924	
4	22962-001	3/4" Flat Washer	20			*Conmet Preset Plus FL Nut Assembly Kit No. 10036550, Includes Key Nos. 13-16	
5	80691-001	3/4"-16 UNC - 2B Nut	6	13		*Snap Ring - Double Wind Part No. 10033288	
		*Conmet Preset Plus FL Hub Assembly Part No. 10081313, Includes Key Nos. 6-16	2	14		*Spindle Nut Lockwasher Part No. 10031171	
6		*Hub Part No. 10033316		15		*Outer Spindle Nut Part No. 10031170	
		*Conmet Hub Bearing Rebuild Kit No. 10081728, One Wheel End, Includes Key Nos. 7-12		16		*Snap Ring Retainer Part No. 10031172	
		*Conmet Wheel Seal Kit No. 10081519, One Wheel End, Includes Key Nos. 7-8		17		*Conmet Drum 16.5 x 6 Part No. 10033071	
7		*Bearing Spacer Part No. 10034342		18		**M22 x 1.5 Two-piece Wheel Nut	20
8		*Wheel Seal Part No. 10045883		19		*Federal-Mogul Hub Cap Gasket No. G-3009	2
9		*Inner Bearing Cone Part No. 10041922		20		*Federal-Mogul Hub Cap Part No. 343-009, Includes Key No. 21	2
				21		*Rubber Plug	
				22	64545-002	5/16"-18 UNC x 3/4" Hex Bolt with Retained Washer	12
				23		*WABCO ABS Sensor Part No. 441-032-900-0	2
				24	64550-000	ABS Sensor Clip	2

**NOTES:** \* Not supplied by Hendrickson for aftermarket service purposes. Description and part number listed for reference only. For more information and assistance with service, maintenance and rebuild instructions on these components see below component manufacturers:

- Conmet technical and parts support 800.547.9473 and for technical support: [aftermarket.conmetwheelends.com/hub-selection](http://aftermarket.conmetwheelends.com/hub-selection)
- Federal Mogul Technical and Part Support 800.325.8886 or online at [www.fme-cat.com](http://www.fme-cat.com)
- Meritor Technical and Part Support 888.725.9355, or online for parts: [www.meritorpartsexpress.com](http://www.meritorpartsexpress.com) and for technical support: [www.meritorbullpen.com](http://www.meritorbullpen.com)
- WABCO Technical and Part Support 855.228.3203 or online at [www.wabco-auto.com/aftermarket-services/inform-product-catalog](http://www.wabco-auto.com/aftermarket-services/inform-product-catalog)

\*\* Not supplied by Hendrickson, used for reference only. Contact the vehicle manufacturer for more information.



■ Selection Guide

Table 2 Leaf Spring Assembly and Components

Capacity	Ride Height	Leaf Spring and Clamp Group Assembly	Clamp Group Service Kit	Leaf Spring Assembly Key No. 26	1" Hex Bolt Key No. 21		Washer Key No. 22	Leaf Spring Spacer Key No. 28		
					Part No.	Length		Part No.	Qty	Thickness
18K	8"	91843-001	34013-278	82698-000	7"	64107-002	N/A	N/A		
	9"	91843-002	34013-397		8"	64107-001		1	1"	79814-000
	10"	91843-003	34013-312		9"	64107-003		2		
20K	8"	91843-101	34013-278	82699-000	7"	64107-002	N/A	N/A		
	9"	91843-102	34013-397		8"	64107-001		1	1"	79814-000
	10"	91843-103	34013-312		9"	64107-003		2		
22K	8"	91843-201	34013-278	82700-000	7"	64107-002	N/A	N/A		
	9"	91843-202	34013-397		8"	64107-001		1	1"	79814-000
	10"	91843-203	34013-312		9"	64107-003		2		
24K	8"	91843-301	34013-254	82701-000	7.5"	64107-000	22962-051	N/A		
	9"	91843-302	34013-255		8.5"	64107-006		1	1"	79814-000
	10"	91843-303	34013-314		9.5"	64107-007		2		

**⚠ WARNING**

USE 1" FLAT WASHERS (PART NO. 22962-051) ONLY AS SPECIFIED IN TABLE 2 (LEAF SPRING AND CLAMP GROUP ASSEMBLY). THE TABLE LISTS DIFFERENT CONFIGURATIONS FOR THIS ASSEMBLY. FOR CERTAIN CONFIGURATIONS THE CLAMP GROUP REQUIRES THE USE OF 1" FLAT WASHERS (PART NO. 22962-051) WITH THE SPECIFIED 1" HEX BOLT LENGTH, BUT NOT IN OTHER CONFIGURATION SPECIFICATIONS IN TABLE 2 CAN RESULT IN IMPROPER CLAMP FORCE IN THE LEAF SPRING AND CLAMP GROUP ASSEMBLY, IMPROPER SEATING AND COMPONENT DAMAGE, WHICH CAN CAUSE LOSS OF VEHICLE CONTROL, ADVERSE VEHICLE HANDLING, PROPERTY DAMAGE AND PERSONAL INJURY.

■ Special Tool

**KINGPIN BUSHING TOOL – ADJUSTABLE STRAIGHT FLUTE REAMER – HIGH CAPACITY**



The dimension of cutting diameter must facilitate a range of **2.00"-2.01"**

This is a general parts list to provide directional information. Components may vary by model. Questions in regards to parts, contact Hendrickson Truck Parts at 1.866.755.5968 (Toll-free U.S. and Canada), 630.910.2800 (Outside U.S. and Canada) or e-mail: truckparts@hendrickson-intl.com. Actual product performance may vary depending upon vehicle configuration, operation, service and other factors. All applications must comply with applicable Hendrickson specifications and must be approved by the respective vehicle manufacturer with the vehicle in its original, as-built configuration. Contact Hendrickson for additional details regarding specifications, applications, capacities, and operation, service and maintenance instructions.

Call Hendrickson at **1.866.755.5968** (toll-free) or **1.630.910.2800** for additional information.



www.hendrickson-intl.com

**TRUCK COMMERCIAL VEHICLE SYSTEMS**  
 800 South Frontage Road  
 Woodridge, IL 60517-4904 USA  
 1.866.755.5968 (Toll-free U.S. and Canada)  
 1.630.910.2800 (Outside U.S. and Canada)  
 Fax 1.630.910.2899

SP-335 Rev A 05-20

© 2020 Hendrickson USA, L.L.C. All Rights Reserved. All trademarks shown are owned by Hendrickson USA, L.L.C., or one of the affiliates, in one or more countries. Information contained in this literature was accurate at the time of publication. Product changes may have been made after the copyright date that are not reflected.

Printed in United States of America