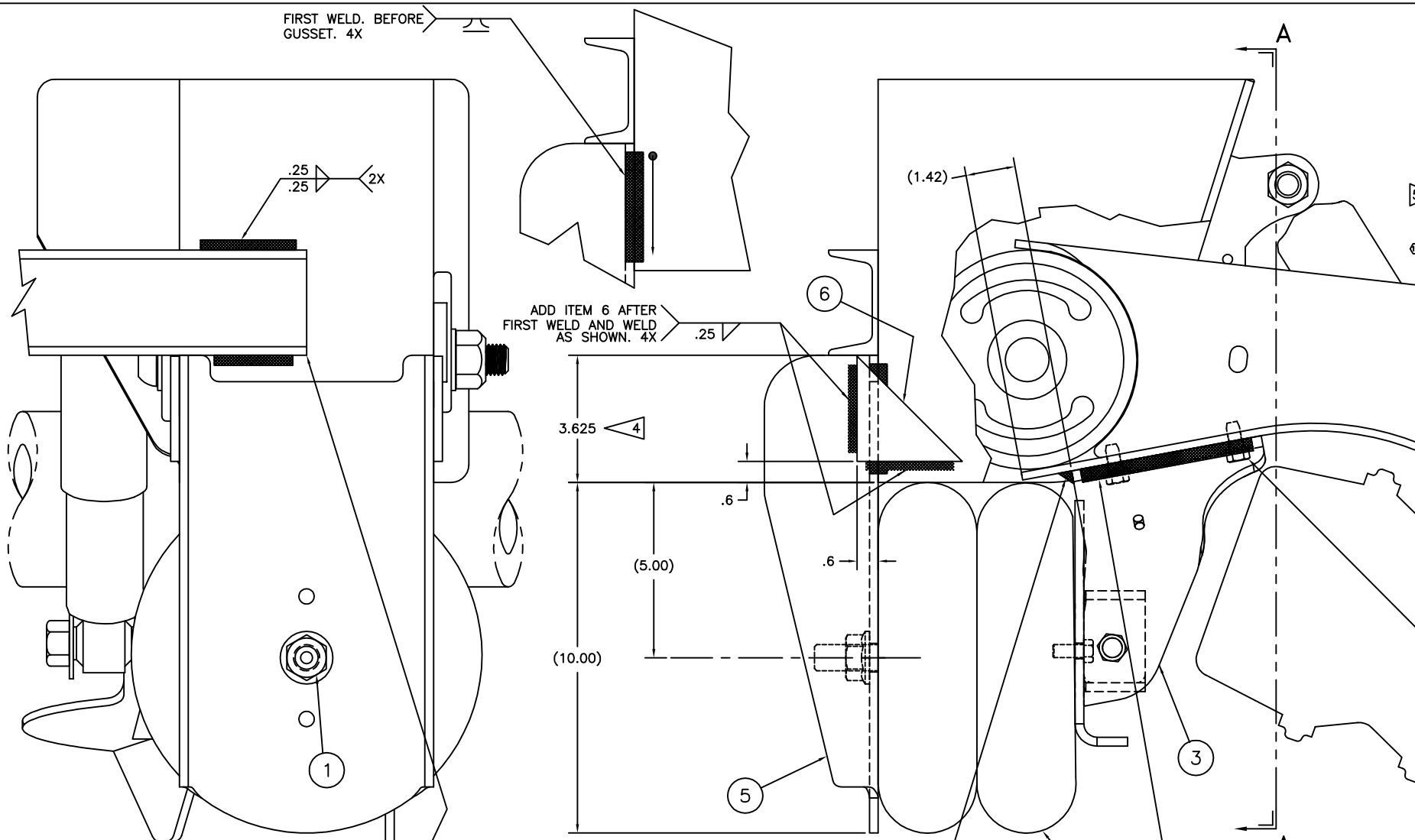
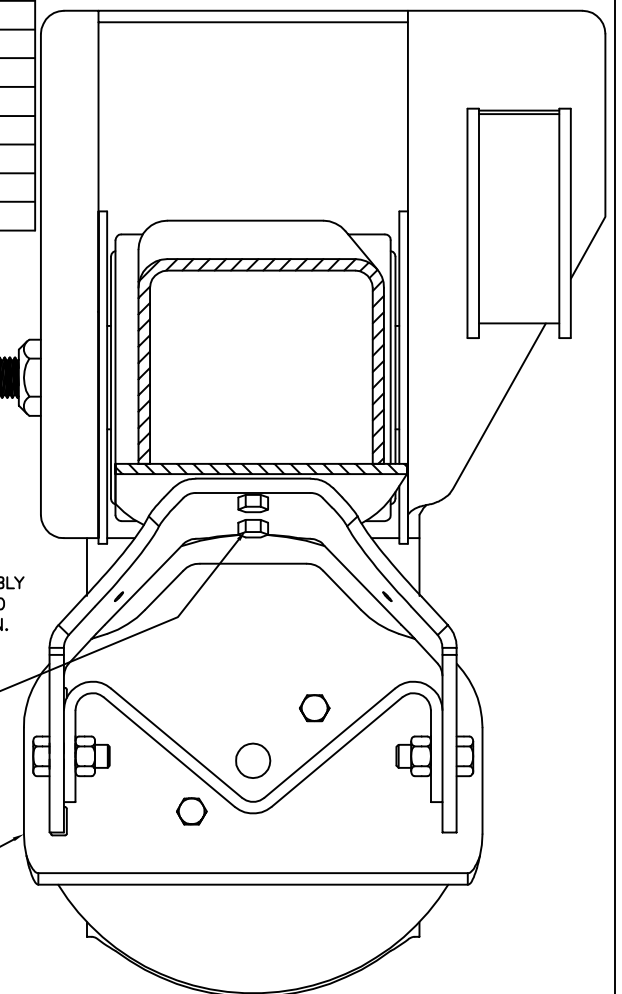


FIRST WELD. BEFORE GUSSET. 4X



ITEM	PART NO.	DESCRIPTION	QTY.
1	A-24614	LIFT ASSEMBLY BOLT KIT	1
2	C-23114	AIR SPRING	2
3	C-28537C	LIFT BRACKET	2
4	B-27945	BEAM PLATE ASS'Y	2
5	D-24658C	HANGER SUPPORT, LIFT	2
6	B-2901-37	.25 GUSSET	4
7	*DWG D-28866	UBL-003 DRAWING	1
8	*A-27214	1-WAY CHECK VALVE ASSEMBLY	1
9	*DWG C-30435	LIFT AXLE CONTROL DRAWING	1
10	*T91001	UBL HARDWARE KIT INFORMATION	1

SECTION AA



\* NOT SHOWN  
 NOTES:  
 1. 12 RIDE HEIGHT SHOWN, INSTALLATION IS SAME FOR ALL RIDE HEIGHTS.  
 2. WEIGHT: 64.90 LB.  
 INCLUDES .58 LB FOR 65.79 INCHES OF .25 WELD.  
 3. IF GAP EXISTS BETWEEN LIFT BRACKET (ITEM 3) AND BEAM PLATE ASS'Y (ITEM 4), USE A C-CLAMP TO COMPRESS LEGS OF LIFT BRACKET TO ALLOW BEAM PLATE ASSEMBLY TO FIT.  
 4. WELD:  
 28.5 VOLTS, 400 IPM, 275-300 AMPS,  
 35 CFH (GAS FLOW), .045 WIRE  
 FILL ALL CRATERS AT END OF WELDS.  
 WELD DIRECTION:  
 STOP      START  
 5. UBL-003 LIFT KIT INCLUDES A 1-WAY CHECK VALVE ASSEMBLY FOR THE USE WITH A LIFT AXLE AIR CONTROL KIT. REFER TO THE LIFT AXLE CONTROL DRAWING FOR PROPER INSTALLATION.  
 6. UBL-003 INTENDED FOR USE WITH CARBON STEEL FRAME BRACKETS ONLY. USE UBL-301 OR UBL-302 FOR STAINLESS STEEL FRAME BRACKETS.

WARNING!

SELF TAPPING SCREWS ARE FOR LOCATION ONLY. LIFT BRACKET (ITEM 3) MUST BE WELDED AS SHOWN.  
 REAR SELF-TAPPING SCREW MAY NEED TO BE REMOVED AFTER WELDING OPERATION WHEN LONG STROKE BRAKE CHAMBERS ARE USED.

IMPORTANT!

REMOVE BEAM PLATE ASSEMBLIES (TWO 1/2 BOLTS) TO INSTALL OR REMOVE PARKING BRAKE CHAMBERS. DOES NOT APPLY TO SERVICE BRAKE CHAMBERS.

IMPORTANT!

IF CROSS CHANNEL IS REQUIRED INSTALL HANGER SUPPORT BRACKET (ITEM 5) FIRST, REST CHANNEL ON TOP OF BRACKET SURFACE AND WELD AS SHOWN.

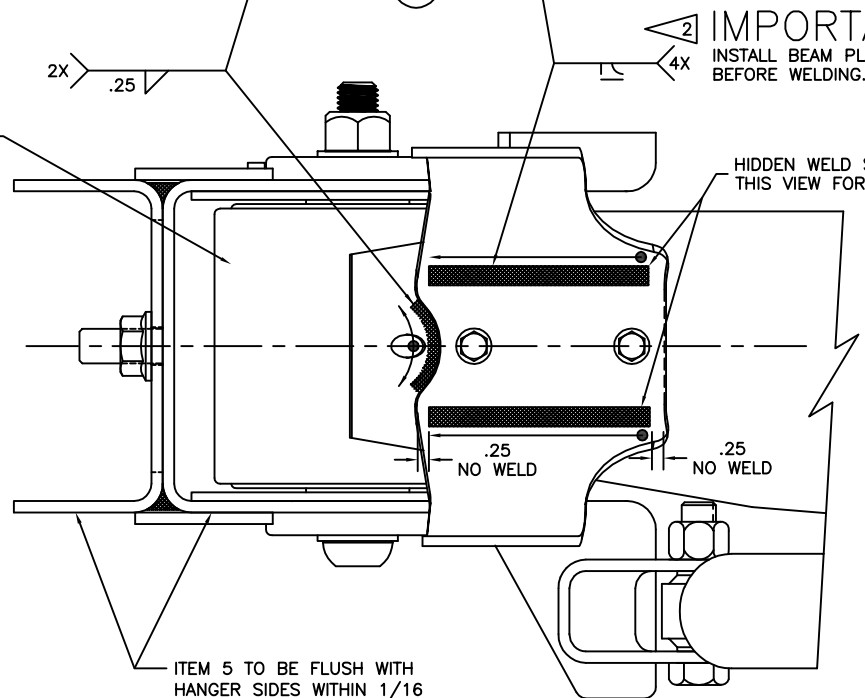
IF RETROFIT, TAKE OFF CHANNEL AND RELOCATE.

ASSEMBLY PROCEDURE:

- 1 LOCATE LIFT BRACKETS (ITEM 3) WITH SELF-TAPPING SCREWS.
- 2 INSTALL BEAM PLATE ASSEMBLIES (ITEM 4) TO LIMIT DISTORTION OF LIFT BRACKETS (ITEM 3) DURING WELDING.
3. WELD TO BEAMS AS SHOWN.
- 4 LOCATE TOP OF HANGER SUPPORT ASSEMBLY (ITEM 5) 3 5/8 FROM BOTTOM OF HANGERS AND WELD AS SHOWN.
- 5 LOCATE AND WELD "C" CHANNEL AS SHOWN IF REQUIRED.
- 6 IF PARKING BRAKES ARE REQUIRED, INSTALL AT THIS TIME.
7. INSTALL AIR SPRINGS (ITEM 2).

This Print remains the property of Hendrickson. All information contained thereon is confidential. It is loaned, subject to return on demand and on express condition that it is not to be copied or used directly or indirectly for any purpose other than the purpose for which it has been loaned to you.

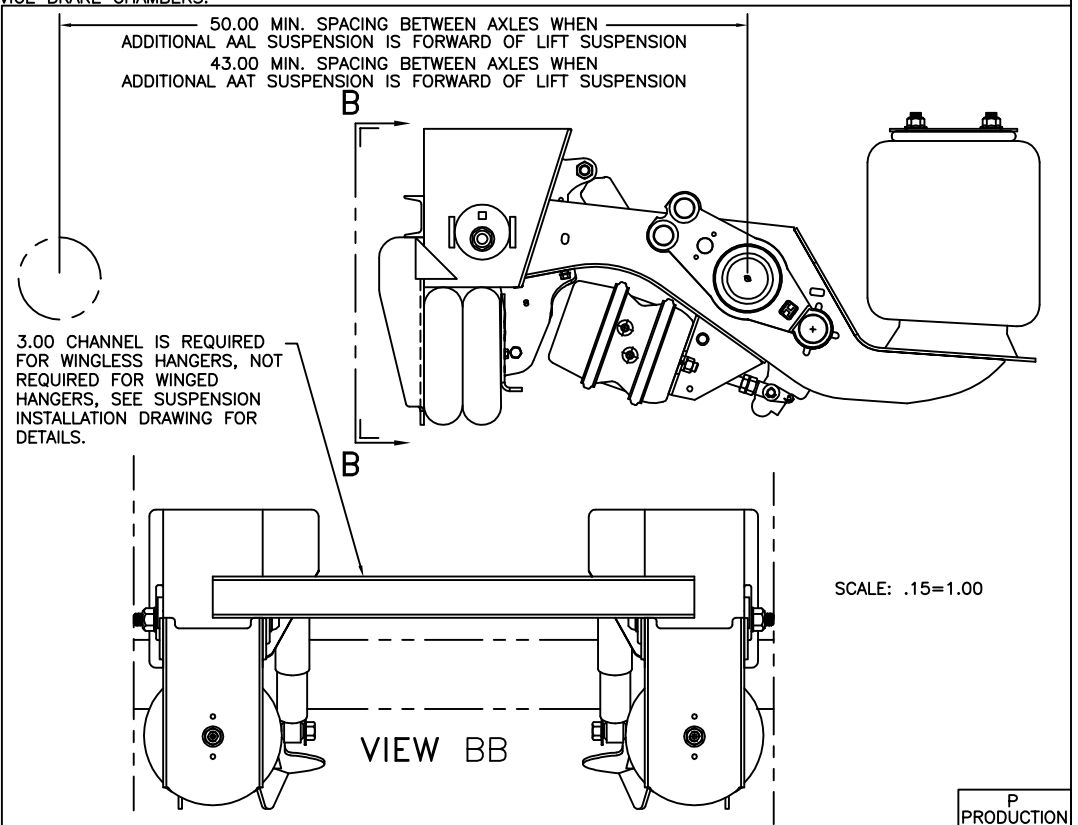
TORQUE SPECIFICATIONS		
DESCRIPTION	SIZE	TORQUE(FT-LB)
AIR SPRING BOLTS	3/8-16	25-35
AIR SPRING NUT	3/4-16	45-55
BEAM PLATE ASSEMBLY BOLTS	1/2-13	55-75
BRAKE CHAMBER MTG. NUTS	5/8-11	100-110
SELF TAPPING SCREWS	3/8	160-180 IN-LB



IMPORTANT!

INSTALL BEAM PLATE ASSEMBLIES BEFORE WELDING.

INTRAAAX AAL INSTALLATION



PART NUMBER	REV
UBL-003	10

**H. HENDRICKSON**  
 TRAILER COMMERCIAL VEHICLE SYSTEMS  
 2070 INDUSTRIAL PLACE SE., CANTON, OH 44707-2000 U.S.A.

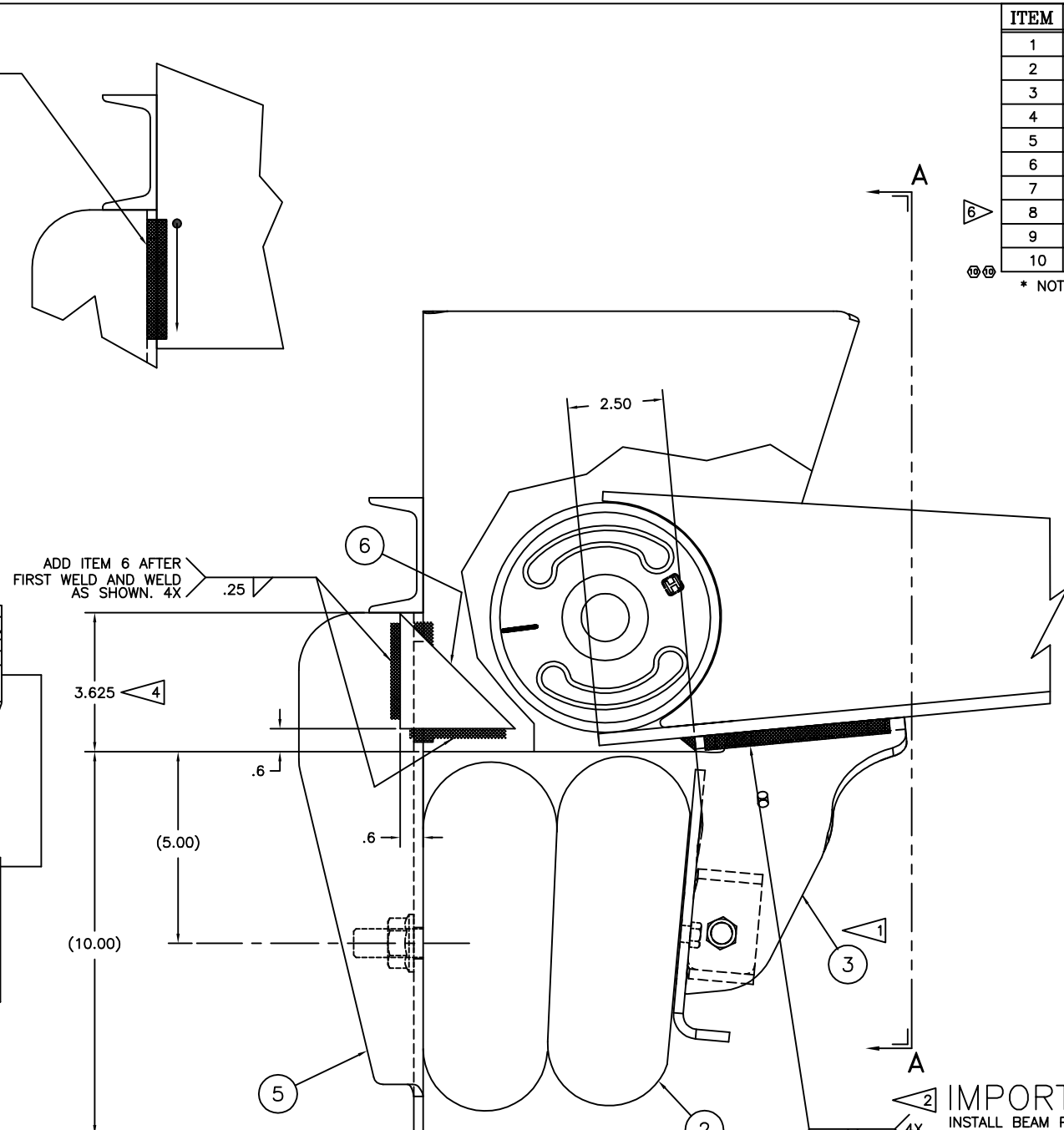
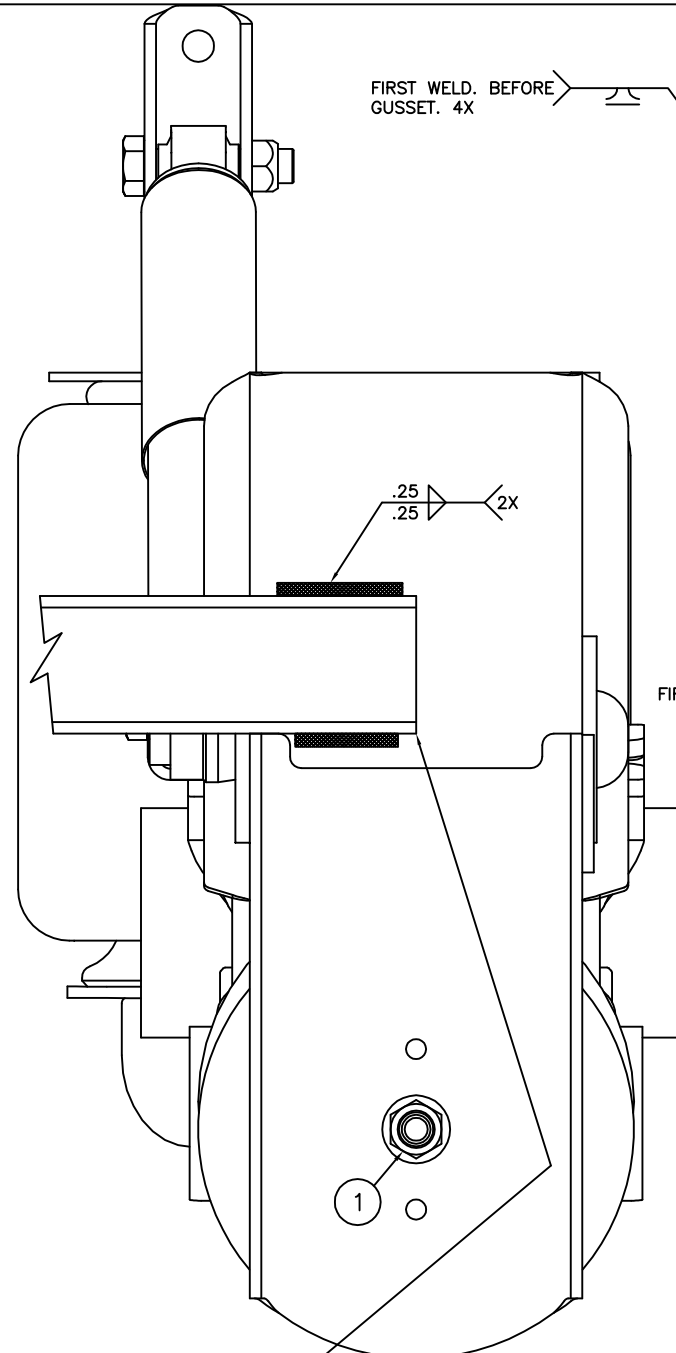
UNLESS OTHERWISE NOTED: DIMENSIONS ARE IN INCHES  
 X: ± .1  
 Y: ± .06  
 Z: ± .030  
 ANGULAR: ± 0.5°  
 DIMENSIONS ADHERE TO ANSI Y14.5M-1982

10 33569 JAR 3-6-20  
 9 37824 DLD 9-27-18  
 8 37583 DLD 6-28-18  
 7 20460 CDR 2/14/12

DESIGNED BY: K. GALIGHER  
 CHECKED BY: P. BILLMAN  
 APPROVED BY: R. GORE

11-1-05  
 11-3-05

SCALE: .50=1.00  
 SIZE: D  
 DRAWING NO.: UBL-003  
 SHEET: 1 OF 2  
 REV: D-28866

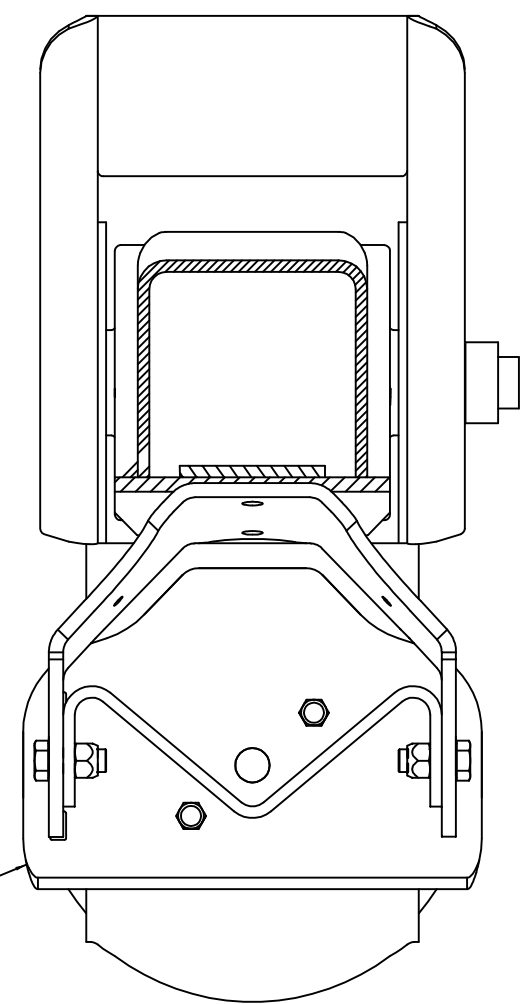


ITEM	PART NO.	DESCRIPTION	QTY.
1	A-24614	LIFT ASSEMBLY BOLT KIT	1
2	C-23114	AIR SPRING	2
3	C-28537C	LIFT BRACKET	2
4	B-27945	BEAM PLATE ASS'Y	2
5	D-24658C	HANGER SUPPORT, LIFT	2
6	B-2901-37	.25 GUSSET	4
7	*DWG D-28866	UBL-003 DRAWING	1
8	*A-27214	1-WAY CHECK VALVE ASSEMBLY	1
9	*DWG C-30435	LIFT AXLE CONTROL DRAWING	1
10	*T91001	UBL HARDWARE KIT INFORMATION	1

\* NOT SHOWN

- NOTES:
- 12 RIDE HEIGHT SHOWN, INSTALLATION IS SAME FOR ALL RIDE HEIGHTS.
  - WEIGHT: 64.90 LB  
INCLUDES .58 LB FOR 65.79 INCHES OF .25 WELD.
  - IF GAP EXISTS BETWEEN LIFT BRACKET (ITEM 3) AND BEAM PLATE ASS'Y (ITEM 4), USE A C-CLAMP TO COMPRESS LEGS OF LIFT BRACKET TO ALLOW BEAM PLATE ASSEMBLY TO FIT.
  - WELD:  
28.5 VOLTS, 400 IPM, 275-300 AMPS, 35 CFH (GAS FLOW), .045 WIRE  
FILL ALL CRATERS AT END OF WELDS.  
WELD DIRECTION:  
STOP → START ●
  - DO NOT USE THIS LIFT KIT WITH DUAL TIRE SELF-STEER AXLE.
  - UBL-003 LIFT KIT INCLUDES A 1-WAY CHECK VALVE ASSEMBLY FOR THE USE WITH A LIFT AXLE AIR CONTROL KIT. REFER TO THE LIFT AXLE CONTROL DRAWING FOR PROPER INSTALLATION.
  - UBL-003 INTENDED FOR USE WITH CARBON STEEL FRAME BRACKETS ONLY. USE UBL-301 OR UBL-302 FOR STAINLESS STEEL FRAME BRACKETS.

SECTION AA



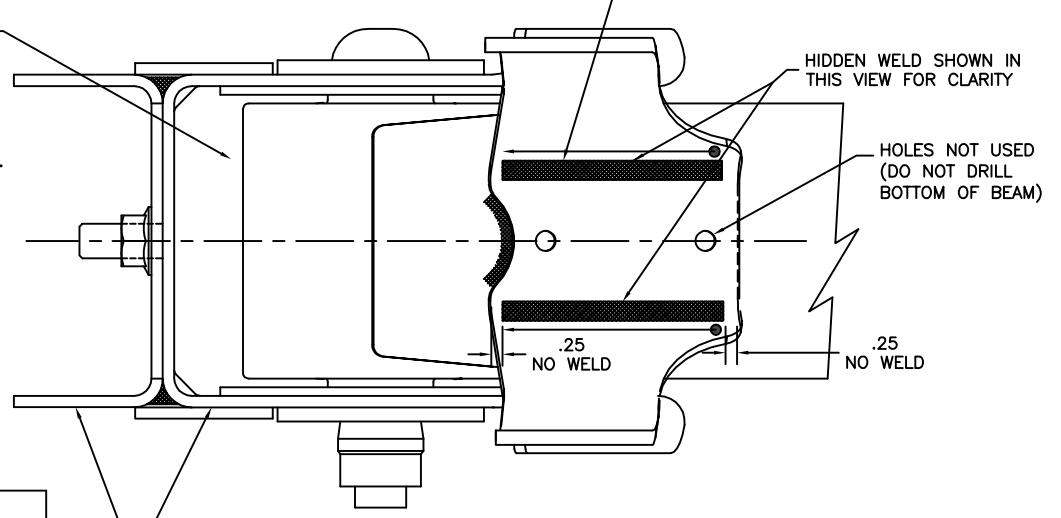
**IMPORTANT!**  
IF CROSS CHANNEL IS REQUIRED INSTALL HANGER SUPPORT BRACKET (ITEM 5) FIRST, REST CHANNEL ON TOP OF BRACKET SURFACE AND WELD AS SHOWN.

IF RETROFIT, TAKE OFF CHANNEL AND RELOCATE.

ASSEMBLY PROCEDURE:

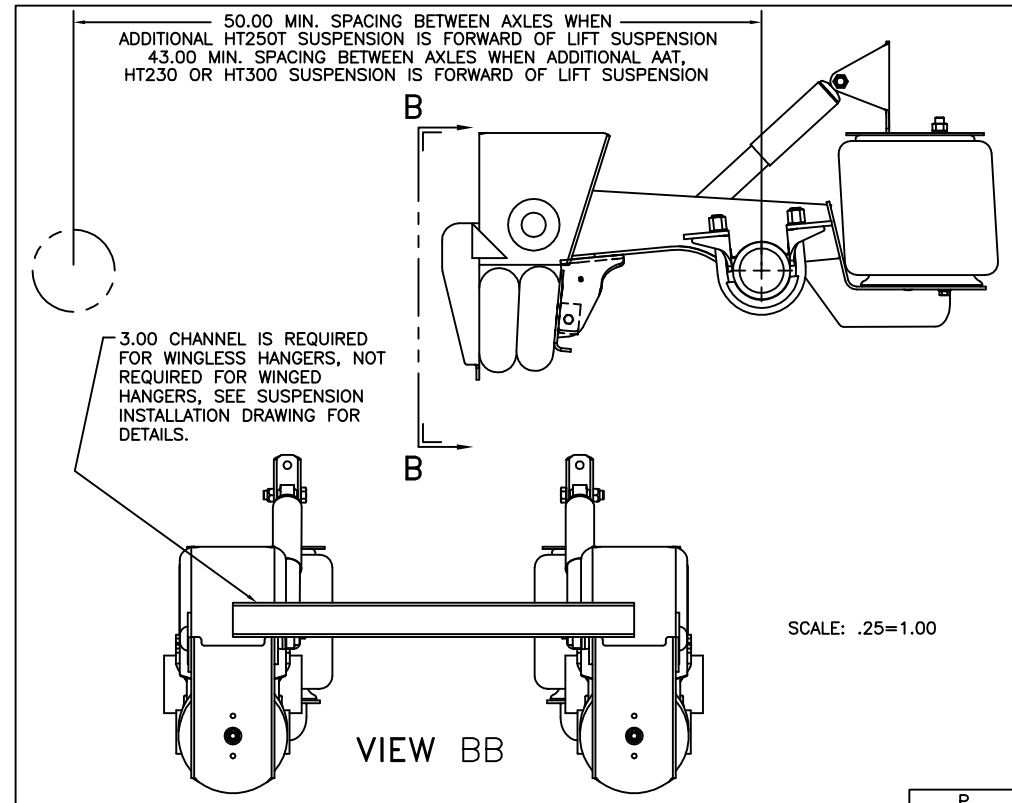
- 1 LOCATE LIFT BRACKETS (ITEM 3) AND CLAMP INTO PLACE. HOLES IN LIFT BRACKETS NOT USED (DO NOT DRILL BEAM).
- 2 INSTALL BEAM PLATE ASSEMBLIES (ITEM 4) TO LIMIT DISTORTION OF LIFT BRACKETS (ITEM 3) DURING WELDING.
3. WELD TO BEAMS AS SHOWN.
- 4 LOCATE TOP OF HANGER SUPPORT ASSEMBLY (ITEM 5) 3 5/8 FROM BOTTOM OF HANGERS AND WELD AS SHOWN.
- 5 LOCATE AND WELD "C" CHANNEL AS SHOWN IF REQUIRED.
6. INSTALL AIR SPRINGS (ITEM 2).

AIR SPRING NOT SHOWN FOR CLARITY



**IMPORTANT!**  
INSTALL BEAM PLATE ASSEMBLIES BEFORE WELDING.

HT250T INSTALLATION



TORQUE SPECIFICATIONS		
DESCRIPTION	SIZE	TORQUE(FT-LB)
AIR SPRING BOLTS	3/8-16	25-35
AIR SPRING NUT	3/4-16	45-55
BEAM PLATE ASSEMBLY BOLTS	1/2-13	55-75

This Print remains the property of Hendrickson. All information contained thereon is confidential. It is loaned, subject to return on demand and on express condition that it is not to be copied or used directly or indirectly for any purpose other than the purpose for which it has been loaned to you.