

H PARTS LIST

QUIK-DRAW® PNEUMATIC PIN-PULL MECHANISM

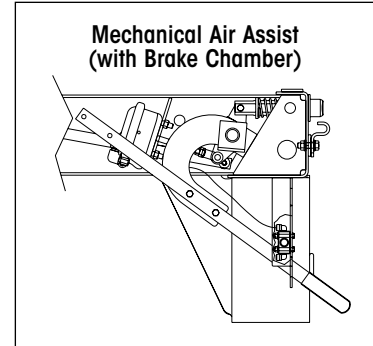
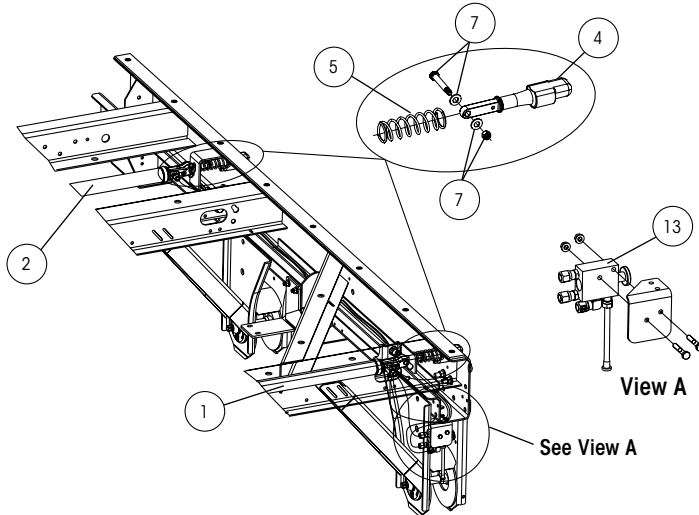
SUBJECT: Van and Platform Applications

LIT NO: L751

DATE: July 2019

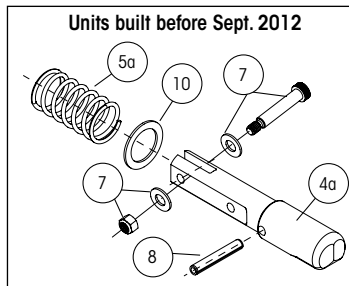
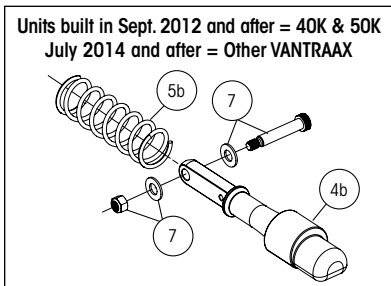
REVISION: G

VAN APPLICATIONS (VANTRAAK®, ULTRAA-K® and HK™ SERIES) — SEE PAGE 3 FOR PLATFORM APPLICATIONS (INTRAAK®-SP)

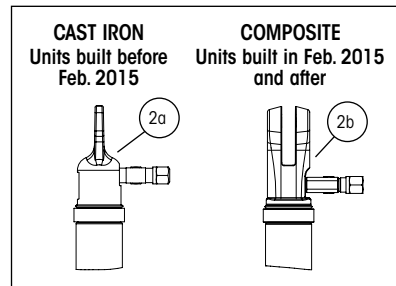


Lever arm actuated version is no longer available on production models. Contact Hendrickson for assistance.

SLIDER PINS



QUIK-DRAW® ACTUATOR ENDS



ITEM	DESCRIPTION	PART NO.	QTY.	NOTES
1	FRONT LINEAR ACTUATOR WITH FITTINGS			
	Cast Iron (Units built before Feb. 2015)			
	42-inch box	S-28061-1	1	Includes one T-fitting
	48- and 54-inch box	S-28061-2	1	Includes one T-fitting
	Composite (Units built in Feb. 2015 and after)			
	42-inch box	S-35294-1	1	Includes one T-fitting, clevis pin & hardware
48- and 54-inch box	S-35294-2	1	Includes one T-fitting, clevis pin & hardware	
2	REAR LINEAR ACTUATOR WITH FITTINGS			
	2a Cast Iron (Units built before Feb. 2015)			
	42-inch box	S-28062-1	1	Includes one straight air line fitting
	48- and 54-inch box	S-28062-2	1	Includes one straight air line fitting
	2b Composite (Units built in Feb. 2015 and after)			
	42-inch box	S-35295-1	1	Includes one straight air line fitting, clevis pin & hardware
48- and 54-inch box	S-35295-2	1	Includes one straight air line fitting, clevis pin & hardware	

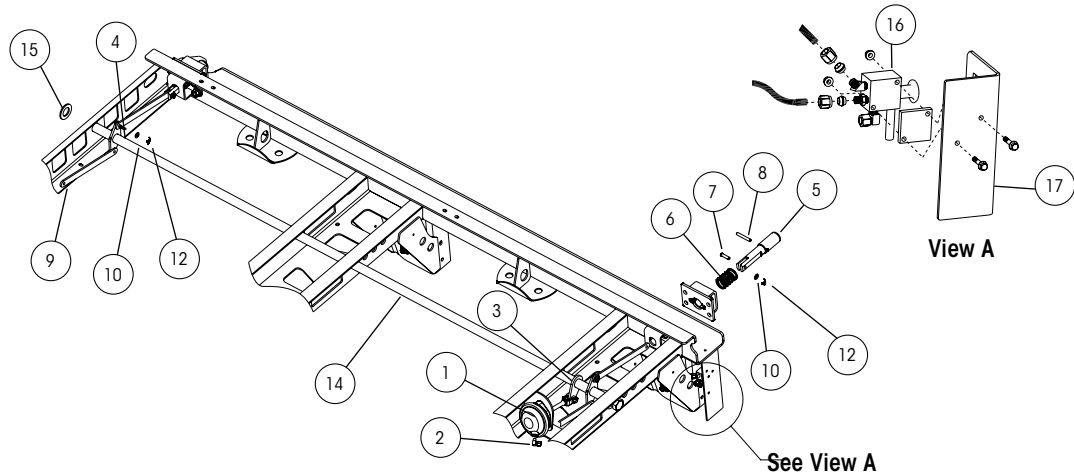
QUIK-DRAW® PARTS LIST



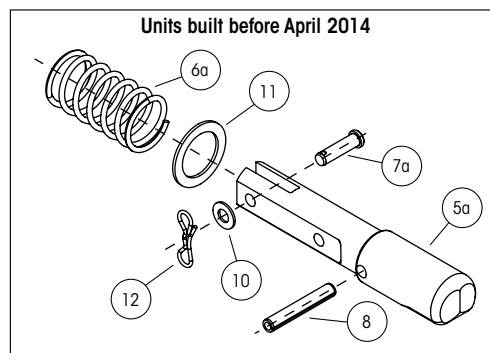
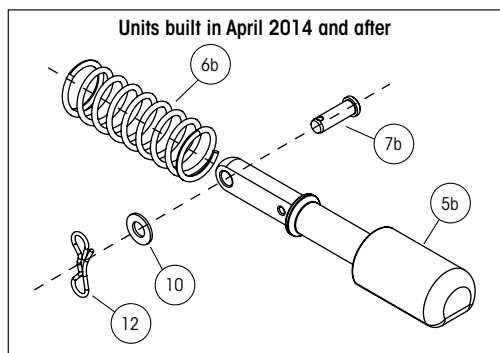
ITEM	DESCRIPTION	PART NO.	QTY.	NOTES
3	PIN EXTENSION FOR 54-INCH BOX (Not Shown)	S-32969	4	
4	LOCKING PIN			
	4a Units built before Sept. 2012			
	1.375" diameter pin	S-28290	4	4" (TTMA) and 6" body rail hole spacing
	1.625" diameter pin	S-28289	4	4" body rail hole spacing
	4b Units built in Sept. 2012 and after – 40K and 50K / July 2014 – Other VANTRAAX®			
	1.375" diameter pin	S-32389	4	4" (TTMA) and 6" body rail hole spacing
	1.625" diameter pin	S-32388	4	4" body rail hole spacing
5	LOCKING PIN SPRING			
	5a Units built before Sept. 2012			
	42-inch box	B-22000	4	3.8" spring
	48- and 54-inch box	B-28930	4	3.25" spring
	5b Units built in Sept. 2012 and after – 40K and 50K / July 2014 – Other VANTRAAX			
	42", 48" and 54" box with QUIK-DRAW®	B-32500	4	4.5" spring
6	CLEVIS PIN (Not Shown)			
	6a Clevis pin (units built before Sept. 2012)	SA-5200-6	4	3/8" × 1.380"
	6b Clevis pin (units built in Sept. 2012 and after - 40K and 50K / July 2014 - Other VANTRAAX)			
	Cast iron end	SA-5200-8	4	3/8" × 1.50"
	Composite end	SA-5200-10	4	3/8" × 1.813"
7	SLIDER PIN BOLT KIT	S-39880-1	1	Includes 4 - 1.75" shoulder bolts, 4 - 1" shoulder bolts, 8 washers and 4 nuts
8	SPRING PIN (units built before Sept. 2012)	SA-8100-4	4	3/8" × 2.5" roll pin
9	LOCKING PIN WASHER (Not Shown)	SA-1500-2	6	3/8" I.D. flat washer
10	PIN WASHER	S-30641	1	
11	LOCKING COTTER PIN (Not Shown)	A-29557	6	3/32" × 1" cotter pin
12	LOCKING PIN LINK (Not Shown)			
	42-inch box	S-32967-1	2	
	48-inch box	S-32967-2	2	
	54-inch box	S-32967-3	2	
13	QUIK-DRAW VALVE			
	Three-way auto reset valve	VS-25223	1	Valve with integral knob
	Three-way auto reset valve assembly	VS-25224	1	Valve with integral knob and fittings
14	QUIK-DRAW RETROFIT KIT (Not Shown)			Includes all retrofit components and installation instructions
	42-inch box	D-25430-2	1	
	48-inch box	D-25430-8	1	
	54-inch box	D-25430-4	1	



PLATFORM APPLICATIONS (INTRAAX®-SP) — SEE PAGE 1 FOR VAN APPLICATIONS



SLIDER PINS



ITEM	DESCRIPTION	PART NO.	QTY. ¹	NOTES
1	BRAKE CHAMBER ACTUATOR	A-23039	1	Type 12 modified
2	90° ELBOW FITTING	SA-4300-19	1	
3	BRAKE CHAMBER ACTUATOR CRANK ARM	S-26964	1	
4	CRANK ARM WELDMENT			
	Manual and customer supplied	B-26934	2	For front and rear of slider box
	Mechanical air assist	B-26934	1	For rear of slider box
5	LOCKING PIN			
	5a Units built before April 2014			
	1.375" diameter pin	S-28290	4	4" and 6" body rail hole spacing
	1.625" diameter pin	S-28289	4	4" body rail hole spacing
	5b Units built in April 2014 and after			
	1.375" diameter pin	S-32389	4	4" and 6" body rail hole spacing
	1.625" diameter pin	S-32388	4	4" body rail hole spacing
6	LOCKING PIN SPRING			
	6a Units built before April 2014			
	42-inch box	B-22000	4	3.25" spring
	48- and 54-inch box	B-28930	4	3.8" spring
	6b Units built in April 2014 and after			
	42", 48" and 54" box with QUIK-DRAW®	B-32500	4	4.5" spring
7	CLEVIS PIN			
	7a Units built before April 2014	SA-5200-6	4	3/8" × 1-3/8"
	7b Units built in April 2014 and after	SA-5200-3	4	3/8" × 1-1/5"
8	SPRING PIN	SA-8100-4	4	3/8" × 2-1/2" roll pin

1. Quantities may vary depending on model configuration.

