



Truck Commercial Vehicle Systems  
**POPULAR KITS  
& PARTS CATALOG**



# OUTSTANDING CUSTOMER SERVICE

Our customers demand and deserve quality service. The World Rides On Us® symbolizes our commitment to the customer. At Hendrickson that commitment begins early and runs deep.

It starts by providing OEMs advanced engineering services to assist in the design, development and testing of equipment specific to their applications.

We support our products through extensive technical support and training services to help ensure the proper installation, operation, service and maintenance of Hendrickson equipment and aftermarket components.

## CONTENTS

### FRONT SUSPENSIONS & AXLE SYSTEMS

- Height Control Valves 3
- Air Springs 4
- Shock Absorbers 4
- Leaf Spring Assemblies 4
- Kingpin Bushings & Thrust Bearings 5
- Tie Rods 6

### REAR SUSPENSIONS

- Air Springs 7
- Height Control Valves 7
- Shock Absorbers 8
- Main Support Members 8
- Slipper Pads • Spring Seats 9
- D-Pin Bushings 9
- QUIK-ALIGN® 10
- Load Springs • Bolster Springs 11
- Equalizing Beams & Components 12
- RT•RTE Spring Assemblies • Saddles 15
- RS™ Load Cushions and Bushings 16
- R•RS•RT•RTE Cross Tubes 16
- Popular Fasteners 16
- Torque Rod Bushings 17
- Torque Rods 18

# SERVICE

SUPPORT

GUIDE

RELATIONSHIP

ASSISTANCE

QUALITY

SOLUTION

HELP

TRUST



Toll-free U.S. and Canada | Outside U.S. and Canada  
1.866.755.5968 | 1.630.910.2800



1.630.910.2899



PARTS IDENTIFICATION  
truckparts@hendrickson-intl.com



TECHNICAL SUPPORT  
techservices@hendrickson-intl.com



Additional Hendrickson  
Product Information  
www.hendrickson-intl.com



Kit Shown 64089-000L

Volvo, Mack

**64089-000L 12K•12.5K**

**64094-000L 13.2K•14.6K**

Qty.	Contents
1	HCV Mounting Bracket
1	Height Control Valve
1	Height Control Valve Linkage
2	1/4" Flat Washer
2	1/4"-20 UNC Locknut
2	M8 Nut
2	M8 Hardened Washer
2	M8 Locknut
2	M8 Stud



Kit Shown 59427-019L

Freightliner/Western Star

**59427-019L LH with STEERTEK NXT**

**59427-034L RH with STEERTEK NXT**

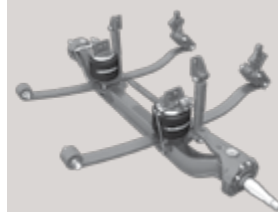
**59427-005L RH with STEERTEK**

Qty.	Contents
1	Height Control Valve
1	Height Control Valve Linkage
2	1/4" Flat Washer
2	1/4"-20 UNC Locknut
2	5/16"-18 UNC Nut
2	5/16" Hardened Washer
2	5/16"-18 UNC Locknut
2	5/16"-18 UNC Stud

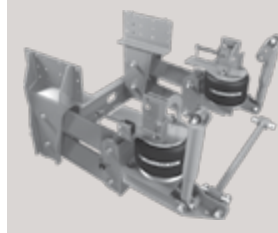
International Truck Vehicles

**59427-014L Right Hand**

Qty.	Contents
1	Height Control Valve
1	Height Control Valve Linkage
2	1/4" Flat Washer
2	1/4"-20 UNC Locknut
2	5/16"-18 UNC Nut
2	5/16" Hardened Washer
2	5/16"-18 UNC Locknut
2	5/16"-18 UNC Stud



**AIRTEK**



**PARASTEER HD**



Part No.	Model
59935-002L	Freightliner • Western Star 12K • Right Hand
59935-013L	12K • Left Hand

Part No.	Model
60501-000L	Volvo, Mack, Blue Bird 12K•12.5K, 13.2K•14.6K



PARASTEER HD  
**57977-000 Dump Valve**

Qty.	Contents
1	HCV Mounting Bracket
1	Height Control Valve
2	1/4" Hardened Washer
2	1/4"-20 UNC Locknut



AIRTEK for Blue Bird, PARASTEER  
**59013-000 Dump Valve**

Qty.	Contents
1	Height Control Valve
2	1/4" Hardened Washer
2	1/4"-20 UNC Locknut



AIRTEK



Part Shown 60716-002



Part Shown 66349-002L

Part No.	OEM
60961-182	*Volvo, Mack with Support Plate 13.2K • 14.6K
64075-002L	Blue Bird 10K
66349-002L	Volvo, Mack 12K•12.5K, Spartan Motorhome Chassis, 10.5K•12K
69116-002L	Freightliner, Western Star, Sterling - After 2010
69782-002L	Freightliner, Western Star, Sterling - Prior to 2010

Part No.	OEM
60716-002L	Volvo, Mack 13.2K • 14.6K
65790-002L	International Truck, Spartan Motorhome Chassis 12.6K•14.6K
67568-002	International IC Bus

\* Vehicles built between 03/05 and 06/07 equipped with dual height control valves MUST use air spring with support plate Service Kit No. 60961-182

## Shock Absorbers



Part Shown 58913-003L

Part No.	OEM
	Freightliner • Western Star
58913-003L	12K Prior to 2010
58913-012L	12K After 2010
	Volvo, Mack
64838-002L	12K•12.5K, 13.2K•14.6K
64838-003L	12K•12.5K, 13.2K•14.6K
65992-001L	International Truck 12K•12.35K

## Leaf Spring Assemblies



Part Shown 59930-021

Part No.	Model
	<b>AIRTEK</b>
	Freightliner • Western Star
59930-021	12K, Set Back
59930-023	12K LH, Coronado
59930-024	12K RH, Coronado
59930-029	12K LH, Century, Cascadia
59930-030	12K RH, Century, Cascadia
64772-000	Volvo, Mack 12K-14.6K
66420-000	International Truck 12K•12.35K
	<b>SOFTEK</b>
53597-000	International Truck Lonestar • Prostar
	Blue Bird Buses • Spartan
53626-000	14.6K
53624-000	10K



STEERTEK NXT

### 60961-629 One Wheel End – LH

Qty.	Contents
1	Upper Grease Cap Assembly
1	Lower Grease Cap Assembly
2	Kingpin Bushing
1	Composite Thrust Bearing
2	Kingpin Seal
2	5/8" Socket Head Cap Screw
1	Loctite Tube
1	Grease Zerk



STEERTEK NXT

### 60961-630 One Wheel End – RH

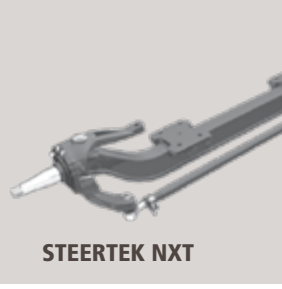
Qty.	Contents
1	Upper Grease Cap Assembly
1	Lower Grease Cap Assembly
2	Kingpin Bushing
1	Roller Thrust Bearing
2	Kingpin Seal
2	5/8" Socket Head Cap Screw
1	Loctite Tube
1	Grease Zerk



STEERTEK NXT

### 60961-628 Axle Set

Qty.	Contents
2	Upper Grease Cap Assembly
2	Lower Grease Cap Assembly
4	Kingpin Bushing
1	Composite Thrust Bearing
1	Roller Thrust Bearing
4	Kingpin Seal
4	5/8" Socket Head Cap Screw
2	Loctite Tube
2	Grease Zerk



STEERTEK NXT



STEERTEK



STEERTEK

### 60961-009 One Wheel End – LH

Qty.	Contents
2	Grease Cap Assembly
2	Retaining Ring
2	Kingpin Bushing
1	Composite Thrust Bearing
2	5/8" Socket Head Cap Screw
2	Kingpin Seal
1	Kingpin Shim 0.005" (Pack of 4)
1	Kingpin Shim 0.047"
1	Loctite Tube



STEERTEK

### 60961-039 One Wheel End – RH

Qty.	Contents
2	Grease Cap Assembly
2	Retaining Ring
2	Kingpin Bushing
1	Roller Thrust Bearing
2	5/8" Socket Head Cap Screw
2	Kingpin Seal
1	Kingpin Shim 0.005" (Pack of 4)
1	Kingpin Shim 0.047"
1	Loctite Tube



STEERTEK

### 60961-040 Axle Set

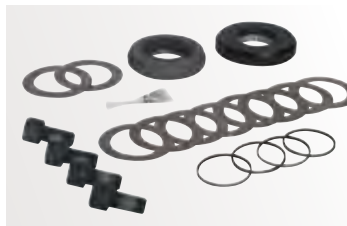
Qty.	Contents
4	Grease Cap Assembly
4	Retaining Ring
4	Kingpin Bushing
1	Composite Thrust Bearing
1	Roller Thrust Bearing
4	5/8" Socket Head Cap Screw
4	Kingpin Seal
2	Kingpin Shim 0.005" (Pack of 4)
2	Kingpin Shim 0.047"
1	Loctite Tube



STEERTEK NXT

### 60961-631 Axle Set, Thrust Bearing

Qty.	Contents
1	Composite Thrust Bearing
1	Roller Thrust Bearing
4	5/8" Socket Head Cap Screw
4	Kingpin Seal
2	Loctite Tube



STEERTEK

### 60961-043 Axle Set, Thrust Bearing

Qty.	Contents
1	Composite Thrust Bearing
1	Roller Thrust Bearing
4	5/8" Socket Head Cap Screw
4	Kingpin Seal
2	Kingpin Shim 0.005" (Pack of 4)
2	Kingpin Shim 0.047"
1	Loctite Tube



STEERTEK NXT



STEERTEK



Straight Tie Rods  
1 1/8" Threads

**60961-734 Axle Set**

Qty.	Contents
1	Left Hand Tie Rod End
1	Right Hand Tie Rod End
2	7/8" Hardened Washer
2	Cotter Pin

**60961-736 Left Hand**

Qty.	Contents
1	Left Hand Tie Rod End
1	7/8" Hardened Washer
1	Cotter Pin

**60961-741 Right Hand**

Qty.	Contents
1	Right Hand Tie Rod End
1	7/8" Hardened Washer
1	Cotter Pin



Straight Tie Rods  
1 1/4" Threads

**60961-735 Axle Set**

Qty.	Contents
1	Left Hand Tie Rod End
1	Right Hand Tie Rod End
2	7/8" Hardened Washer
2	Cotter Pin

**60961-742 Left Hand**

Qty.	Contents
1	Left Hand Tie Rod End
1	7/8" Hardened Washer
1	Cotter Pin

**60961-743 Right Hand**

Qty.	Contents
1	Right Hand Tie Rod End
1	7/8" Hardened Washer
1	Cotter Pin



Drop Tie Rods  
1 1/4" Threads

**60961-737 Axle Set**

Qty.	Contents
1	Left Hand Tie Rod End
1	Right Hand Tie Rod End
2	7/8" Hardened Washer
2	Cotter Pin

**60961-739 Left Hand**

Qty.	Contents
1	Left Hand Tie Rod End
1	7/8" Hardened Washer
1	Cotter Pin

**60961-740 Right Hand**

Qty.	Contents
1	Right Hand Tie Rod End
1	7/8" Hardened Washer
1	Cotter Pin



Straight Tie Rods  
1 1/4" Threads

**60961-011 Axle Set**

Qty.	Contents
1	Left Hand Tie Rod End
1	Right Hand Tie Rod End
2	7/8" Hardened Washer
2	Cotter Pin

**60961-027 Left Hand**

Qty.	Contents
1	Left Hand Tie Rod End
1	7/8" Hardened Washer
1	Cotter Pin

**60961-028 Right Hand**

Qty.	Contents
1	Right Hand Tie Rod End
1	7/8" Hardened Washer
1	Cotter Pin

**TIE ROD ASSEMBLIES**

**Straight Tie Rods**



1 1/8" Threads

**76877-002**

**76877-003**

**76877-006**

1 1/4" Threads

**76879-002**

**Drop Tie Rod**



1 1/4" Threads

**76878-001**

\*Refer to Tie Rod Technical Bulletin SEU-0223 for additional part number information.



Part Shown 49048-002L

Part No.	*Model
	<b>HAS</b>
49048-002L	36K•40K
	<b>PRIMAAX EX•FIREMAAX EX</b>
67391-002	23KT•46KT•69KT 26KST•52KST•78KST
	<b>PRIMAAX • FIREMAAX</b>
69153-002	260•520•780



Part Shown 50405-002L

Part No.	**Model
	<b>COMFORT AIR</b>
65086-002L	Hino
	<b>HAS</b>
50405-002L	46K
50898-002L	40K LH
50899-002L	21K•23K•40K•46K 40K LH with Mack Logo
56917-002L	Low Profile 15K•19K•21K•23K•40K
57122-002L	19K•21K•23K•40K•46K
57920-002L	Low Profile 12K
58520-002L	21K•23K•40K•46K 40K LH Metric Stud
64489-002	Metric Stud with Mack Logo
64651-002	with Mack Logo

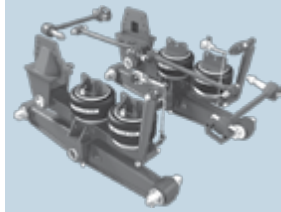


Part Shown 60271-002L

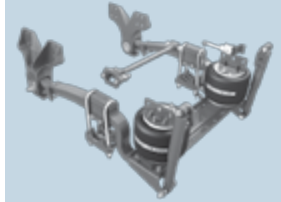
Part No.	*Model
	<b>HTB</b>
66643-002L	International Truck Vehicles, Spartan Motorhome Chassis
	<b>Maxair • AL 405</b>
64917-002L	with Hendrickson logo
	<b>PRIMAAX EX•FIREMAAX EX</b>
67247-002L	26K•52K•78K 26KS•52KS•78KS
	<b>PRIMAAX • FIREMAAX</b>
60271-002L	230•460•690

\* Air spring only.

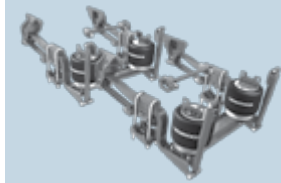
\*\* Includes upper air spring bracket and fasteners. Brackets may vary.



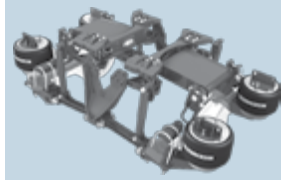
AR2



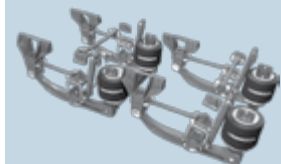
COMFORT AIR



HAS



HTB



PRIMAAX EX  
FIREMAAX EX

## Height Control Valves



AR2•FIREMAAX EX•HAS•HTB  
PRIMAAX EX

### 57977-000 Dump Valve

Qty.	Contents
1	HCV Mounting Bracket
1	Height Control Valve
2	1/4" Hardened Washer
2	1/4"-20 UNC Locknut



COMFORT AIR

### 59013-000 Dump Valve

Qty.	Contents
1	Height Control Valve
2	1/4" Hardened Washer
2	1/4"-20 UNC Locknut



Part No. Model

59899-000	HAS
59935-000	HAS
60501-000L	HAS•COMFORT AIR

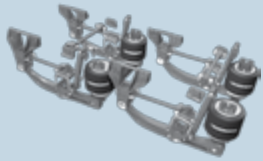


Universal Valve

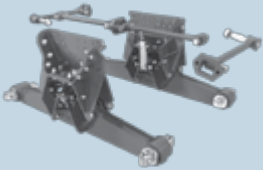
### 60826-000 Non-Dump Valve

Qty.	Contents
1	HCV Mounting Bracket
1	Height Control Valve
2	1/4" Flat Washer
2	1/4"-20 UNC Locknut
1	Locating Pin

**NOTE:** Replaces both the 50433-001 and 50433-002.



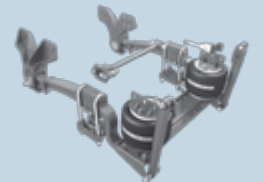
**PRIMAAX EX  
FIREMAAX EX**



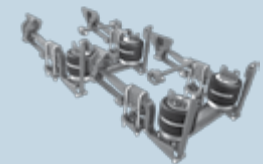
**HAULMAAX**



**HN**



**COMFORT AIR**



**HAS**



Part Shown 60675-001L

Part No.	Model
	<b>PRIMAAX EX • FIREMAAX EX</b>
	<b>PRIMAAX • FIREMAAX</b>
60657-003L	8½", 10" Ride Height
60657-005L	Kenworth Tridem
60657-007L	Volvo
60665-011	12½", 14¾", 15½" Ride Ht.
60665-015	Disc Brake Applications



Part Shown 60675-001L

Part No.	Model
	<b>HAS</b>
60670-003L	15K Low Profile
60670-005L	19K•46K
60670-006	19K•46K
60670-007L	40K•46K Inboard Standard
	<b>HAS HI-TORQUE™</b>
60675-001L	19K•23K•40K•46K Volvo/Mack
60675-002L	21K•40K•46K
60675-003L	19K•21K•23K
60675-005L	40K•46K
60675-006L	40K•46K, Inboard
	<b>COMFORT AIR</b>
60670-014	For Hino
60998-003	Blue Bird



Part Shown 60680-003L

Part No.	Model
57241-006L	AL405
60680-003L	HN
	<b>HAULMAAX</b>
60680-004L	16½" Saddle Ht.
60680-005L	17½"•18½" Saddle Ht.

## Main Support Members



Part Shown 58691-000

Part No.	Rear Model
58691-000	Left Hand AL405 / Maxair
58768-000	Right Hand AL405 / Maxair
60262-000	HAS 40LH Mack Only
60779-000	COMFORT AIR
65106-001	COMFORT AIR Hino

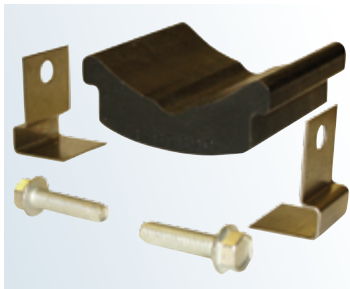


Part Shown 56946-000

Part No.	Model	Thickness
57217-000	HAS 40K LH	1.75"
56940-000	HAS 19K•36K	1.75"
56943-000	HAS 21K•40K	1.88"
56871-001	HAS 40K	1.88"
56946-000	HAS 23K•40K•46K	2.00"
56934-000	HAS 40K•46K LP	2.00"
48645-001	HAS 46K	2.38"
49175-024	HAS 46K Severe Service Kit	2.00"

\*Refer to Tie Rod Technical Bulletin SEU-0223 for additional part number information.





Kit Shown 56557-004

**56557-001** One Hanger

**56557-002** One Hanger

Qty.	Contents
1	Slipper Pad
2	Retainer Plate
4	3/8" Rolok Screw – 1 1/2"

**56557-004** One Hanger

Qty.	Contents
1	Slipper Pad
2	Retainer Clip
2	3/8" Rolok Screw – 1 1/2"

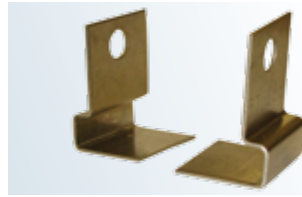
**56557-005** One Hanger

Qty.	Contents
1	Slipper Pad
2	Slipper Pad Lock Pin – 1"



Part Shown 56929-000

Part No.	Description
50612-000	Universal Frame Hanger
56929-000	Integrated



Part No.	Description
57566-000	HAS Retainer Clip



Part No.	Description
57989-000	HAS Rebound Roller

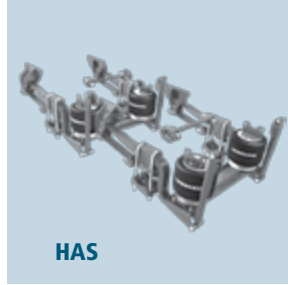


Part Shown 56563-000

Part No.	Description
56562-000	6" LH Front/LH Rear
56563-000	6" RH Front/RH Rear



Part No.	Description
48902-000	1" Spacer
48903-000	1.5" Spacer



HAS

## D-Pin Bushings



Single

**34013-117** 4 3/4" Bolt Length

**34013-107** 5" Bolt Length

**34013-116** 5 1/2" Bolt Length

Qty.	Contents
1	D-Pin Bushing Assembly
2	3/4"-16 UNF Bolt
4	3/4" Flat Washer
2	3/4"-16 UNF Locknut



Axle Set

**56659-012** 4 3/4" Bolt Length

**56659-009** 5" Bolt Length

**56659-013** 5 1/2" Bolt Length

Qty.	Contents
4	3/4"-16 UNF Bolt
8	3/4" Flat Washer
4	3/4"-16 UNF Locknut



PRIMAAX EX  
FIREMAAX EX



PRIMAAX EX  
FIREMAAX EX



COMFORT AIR

**PRIMAAX EX • FIREMAAX EX**



Kit Shown 60632-020

**60632-020 Axle Set**

**60961-720 One Wheel End**

Qty.	Contents
2	Eccentric Collar
2	Concentric Collar
2	1"-14 UNF x 7½" Bolt
4	1" Hardened Washer
2	1"-14 UNF Locknut
2	Pivot Bushing
2	P-80 Bushing Lubricant – 10 ml.



**60632-019 One Wheel End**

Qty.	Contents
1	Eccentric Collar
1	Concentric Collar
1	1"-14 UNF x 7½" Bolt
2	1" Hardened Washer
1	1"-14 UNF Locknut



**60632-018 One Wheel End**

Qty.	Contents
1	1"-14 UNF x 7½" Bolt
2	1" Hardened Washer
1	1"-14 UNF Locknut

**COMFORT AIR**



**60632-013 Axle Set**

Qty.	Contents
1	Eccentric Collar
3	Concentric Collar
2	7/8"-9 UNC x 7½" Bolt
4	7/8" Hardened Washer
2	7/8"-9 UNC Locknut



**34013-103 One Wheel End**

Qty.	Contents
1	Pivot Bushing
2	Plastic Isolator Puck
1	1"-14 UNF x 7½" Bolt
2	1" Hardened Washer
1	1"-14 UNF Locknut
1	P-80 Bushing Lubricant - 10 ml.



Part No.	Description
58648-000	Pivot Bushing



**HAULMAAX 40K•46K**

**60961-746** Weight Bias

Qty.	Contents
1	Progressive Load Spring
1	Auxiliary Load Spring
10	½"-13 UNC x 2¼" Flange Bolt
10	½"-13 UNC Flange Nut
2	Load Spring Shim – 0.25"



**HAULMAAX 40K•46K**

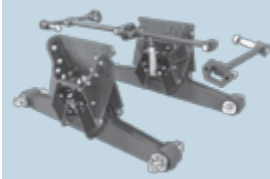
**60961-747** Tandem Set

Qty.	Contents
2	Progressive Load Spring
6	½"-13 UNC x 2¼" Flange Bolt
6	½"-13 UNC Flange Nut



**HN 40K•46K•52K**

Part No.	Model
60314-000	After Nov. 2000
58947-000	Sept. 1998 to Nov. 2000



**HAULMAAX**



**HN**

**60961-745** One Side

Qty.	Contents
1	Progressive Load Spring
3	½"-13 UNC x 2¼" Flange Bolt
3	½"-13 UNC Flange Nut

### REBOUND STRAP



**HAULMAAX 40K•46K**

Part No.	Model
60791-000	Load Spring Shim – 0.25"



**HAULMAAX 40K•46K – Prior to 7/14**

**64179-004** One Side

Qty.	Contents
1	Auxiliary Load Spring
3	½"-13 UNC x 2¼" Flange Bolt
3	½"-13 UNC Flange Nut



Part No.	Model
57878-003	HAULMAAX • HN

### BOLSTER SPRINGS



**HAULMAAX 40K•46K**

**60961-712** One Side

Qty.	Contents
2	Tie-bar Bolster Spring Kit
1	Progressive Load Spring Kit



**HAULMAAX 40K•46K**

**64179-048** One Set

Qty.	Contents
2	Tie-bar Bolster Springs
1	Tie-bar Bolster Spring Spacer
1	Wear Plate
1	½"-13 UNC x 10" Flange Bolt
9	½"-13 UNC Flange Nut
1	Tie-bar Assembly Instructions



**HN 40K•46K•52K**

Part No.	Model
60879-000L	One Set Vehicles Built 02/96 to Current

Part No.	Model
64718-000L	One Set Vehicles Built 11/88 to 02/96

Qty.	Contents
2	Bolster Springs



EQUALIZING BEAM & COMPONENTS

**BRONZE CENTER BUSHINGS**



Kit Shown 30437-000L

- 30436-000L** Two Beams, 34K
- 30437-000L** Two Beams, 38K-52K
- 45374-000** Two Beams, 65K

<b>Qty.</b>	<b>Contents</b>
2	Bronze Center Bushing
2	Beam Center Sleeve
4	Beam Center Seal
8	Thrust Washer
2	Grease Fitting



**34013-054L** One Beam, 38K-52K

<b>Qty.</b>	<b>Contents</b>
1	Bronze Center Bushing
1	Beam Center Sleeve
2	Beam Center Seal
4	Thrust Washer
1	Grease Fitting



**33742-000** One Beam, 52K

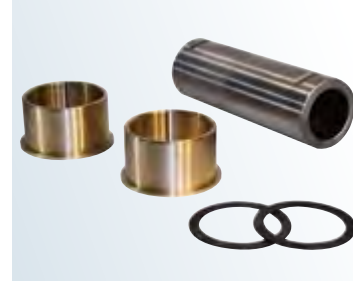
<b>Qty.</b>	<b>Contents</b>
1	Bronze Center Bushing
2	Beam Center Sleeve
4	Thrust Washer



<b>Part No.</b>	<b>Capacity</b>
30240-001	34K
30240-002L	38K-52K
30240-005	65K



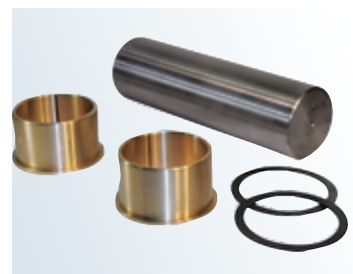
<b>Part No.</b>	<b>Capacity</b>
03415-000	60K



**34013-079** One Beam, 60K

- 4" I.D. Bushing 1/4" Lip - Hollow Sleeve

<b>Qty.</b>	<b>Contents</b>
2	Bronze Center Bushing
1	Beam Center Sleeve
2	Thrust Washer

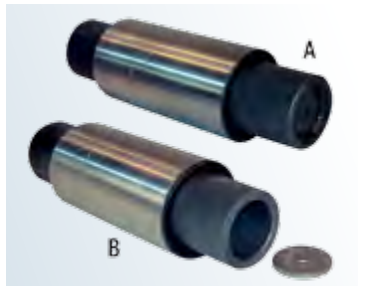


**34013-078** One Beam, 60K

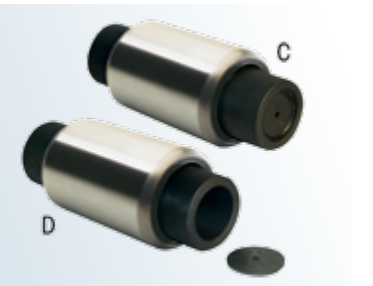
- 4" I.D. Bushing 1/4" Lip - Solid Sleeve

<b>Qty.</b>	<b>Contents</b>
2	Bronze Center Bushing
1	Beam Center Sleeve
2	Thrust Washer

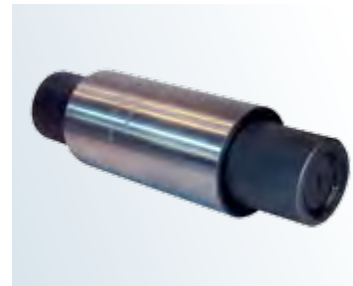
**RUBBER CENTER BUSHINGS**



<b>Part No.</b>	<b>Capacity</b>
<b>A:</b> 06664-000L	34K Welded Plug
05919-000L	38K Welded Plug
29483-005L	38K-52K Welded Plug
<b>B:</b> 22279-000L	34K Loose Plug
22282-000L	38K Loose Plug
34013-097L	38K-52K Loose Plug



<b>Part No.</b>	<b>High Confinement</b>
<b>C:</b> 49400-000L	40K Welded Plug
<b>D:</b> 49600-000L	40K Loose Plug



<b>Part No.</b>	<b>Capacity</b>
10366-000L	65K
15464-000	85K
14110-000L	100K
47420-000	HFS•E4

Refer to Equalizing Beam and Components Selection Guide 45745-147 for additional part number information.



### ADAPTER STYLE END BUSHINGS



Kit Shown 34013-049L

#### End Bushing and Adapter Kits One Wheel End

##### 34013-048L 34K

Qty.	Contents
1	06969-000 End Bushing
1	45000-013L Adapter Kit

##### 34013-049L 44K

Qty.	Contents
1	45900-000 End Bushing
1	45000-007L Adapter Kit

##### 34013-073L 46K

Qty.	Contents
1	45900-000 End Bushing
1	21140-034L Adapter Kit

##### 34013-050L 48K-52K

Qty.	Contents
1	29878-001 End Bushing
1	21140-034L Adapter Kit

##### 34013-051L 52K

Qty.	Contents
1	45407-000 End Bushing
1	21140-033L Adapter Kit



Part Shown 45900-000L

#### Rubber End Bushings

Part No.	Capacity	Length
47421-000	34K-60K	3 1/8"
06966-000L	28K	5 1/4"
06969-000L	34K	5 1/4"
45900-000L	46K	5 3/4"
29878-001L	48K-52K	5 3/4"
45407-000L	52K	6"
10363-000L	65K	6"
10364-000	85K	7"
15424-000L	100K	7 3/4"



Kit Shown 45000-007L

#### Adapter Kits One Wheel End

##### Kit No. Capacity Bolt Length

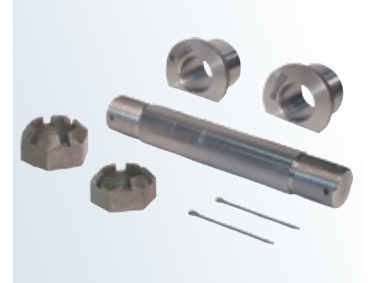
45000-013L 34K 6"

21140-034L 46K 10 1/2"

45000-007L 44K 6 1/2"

21140-033L 52K 11"

Qty.	Contents
2	Beam End Adapter
1	Adapter Tube
1	Bolt
2	Hardened Washer
1	Locknut



Kit Shown 21140-007

#### Adapter Kits One Wheel End

##### 21140-007 65K

##### 34013-052L 65K-85K • 6" Bushing

Qty.	Contents
2	Beam End Adapter
1	Beam End Shaft
2	1 7/8"-12 UNF Slotted Nut
2	Cotter Pin

##### 34013-110L 65K-85K • 7" Bushing

##### 21140-004 85K

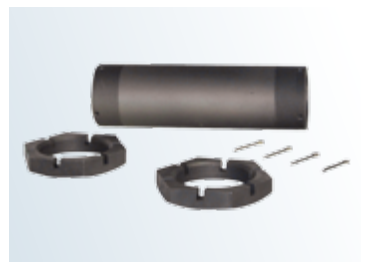
Qty.	Contents
2	Beam End Adapter
1	Beam End Shaft
2	1 7/8"-12 UNF Slotted Nut
2	Cotter Pin
1	Thrust Washer

##### 21140-027 65K

##### 21140-026 65K-85K

##### 21140-024 100K-120K

Qty.	Contents
2	Beam End Adapter
1	Beam End Shaft
2	1 7/8"-12 UNF Slotted Nut
2	Cotter Pin
1	Thrust Washer
1	Adapter Tube



Part Shown 21140-006

#### Tube and Nut Kits One Wheel End

##### 21140-006 65K

##### 34013-072 65K-70K • 6" Bushing

Qty.	Contents
1	Beam Hanger Tube
2	Beam Hanger Tube Nut
4	Cotter Pin

### EQUALIZING BEAM & COMPONENTS



Refer to Equalizing Beam and Components Selection Guide 45745-147 for additional part number information.



EQUALIZING BEAM COMPONENTS

**BAR PIN END BUSHINGS**



**34013-088L** One Beam End

Qty.	Contents
1	Bar Pin End Bushing (Shim)
2	Bar Pin Shim 0.25" x 0.12"
2	1"-8 UNC x 6" Hex Bolt
4	1" Hardened Washer
2	1"-8 UNC Locknut



**34013-188L** One Beam End

Qty.	Contents
1	Bar Pin End Bushing Rotating (Shim)
2	Bar Pin Shim 0.25" x 0.12"
2	1"-8 UNC x 6" Hex Bolt
4	1" Hardened Washer
2	1"-8 UNC Locknut



**34013-087L** One Beam End

Qty.	Contents
1	Bar Pin End Bushing (Non-Shim)
2	1"-8 UNC x 6" Hex Bolt
4	1" Hardened Washer
2	1"-8 UNC Locknut



**34013-104** One Beam End

**56659-005** Two Beam Ends

**56659-001** Vehicle Set

Qty.	Contents
2	1"-8 UNC x 6" Hex Bolt
4	1" Hardened Washer
2	1"-8 UNC Locknut



Part Shown 50131-000

**Bar Pin Shim**

Part No.	Model
50131-000	0.25" x 0.12"
50130-000	0.19" / 0.19"
57026-000	0.375" Flat Shim

**EQUALIZING BEAM WITH ROTATING BAR PIN BUSHINGS**



**HAULMAAX**

Production Part No.	Description	NEW Serv. Part No.
64846-001	54" with Shock Bracket	080225-001
64847-001 and 64847-004	54" without Shock Bracket	080226-001



**HN**

Production Part No.	Beam Width	NEW Serv. Part No.
58494-002	54"	080227-002
57889-008	52"	080228-008



**R•RS•RT•RTE with Bronze Center Bushing**

Production Part No.	Beam Width	NEW Serv. Part No.
50501-017	54"	080476-017
50501-015	52"	080476-015

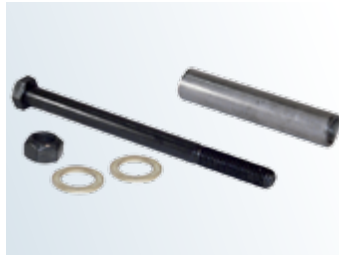
Refer to Equalizing Beam and Components Selection Guide 45745-147 for additional part number information.



Part Shown 47057-000

### Spring Assemblies

Part No.	Model
45027-000	RT 40K
47057-000	RT 46K-52K
02056-000	RT 65K
57961-000	RT 65K



Kit Shown 29828-023

### 29828-023 One Hanger, 34K-52K

### 29828-033 One Hanger, 65K-70K

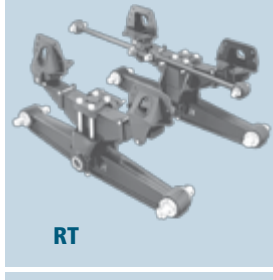
Qty.	Contents
1	Rebound Bolt Spacer
1	13 UNC 6½" Bolt
2	Hardened Washer
1	13 UNC Locknut



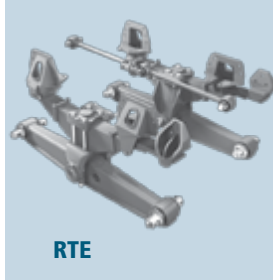
Kit Shown 29828-034L

### 29828-034 Vehicle Set, 34K-52K

Qty.	Contents
2	Rebound Bolt Spacer
2	Spring Hanger Pin
2	Grease Zerk
2	½"-13 UNC x 6½" Bolt
4	½"-13 UNC x 4" Bolt
12	½" Hardened Washer
6	½"-13 UNC Locknut



RT



RTE



Part Shown 45322-000

### Spring Assemblies

Part No.	Model
45121-000	RTE 40K
45322-000	RTE 46K•48K•50K



### 29828-035L One Hanger, 34K-52K

Qty.	Contents
2	½"-13 UNC x 4" Bolt
4	½" Hardened Washer
2	½"-13 UNC Locknut

### 29828-032 Vehicle Set, 65K-70K

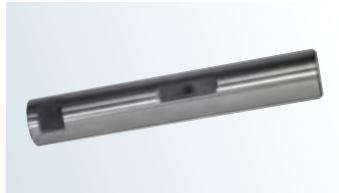
Qty.	Contents
2	Rebound Bolt Spacer
2	Spring Hanger Pin
2	Grease Zerk
2	¾-16 UNF x 6½" Hex Bolt
2	¾" Flat Washer
2	¾-16 UNF Locknut
4	½"-13 UNC x 4" Bolt
8	½" Hardened Washer
4	½"-13 UNC Locknut



Part Shown 30057-007L

### Spring Eye Bushings

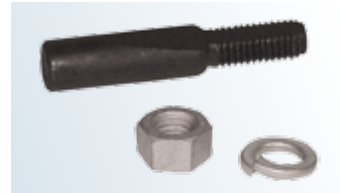
Part No.	Capacity	I.D.
30057-007L	34K	1¼"
30057-008L	40K-52K	1⅜"
22285-000	65K	1½"



Part Shown 43146-000L

### Spring Hanger Pins

Part No.	Capacity	Dia.
43146-000L	34K-52K Double Lock	1⅜"
45797-000	65K-70K Double Lock	1½"
00005-000	65K-70K Draw Key Lock	1½"



### 00062-001L One Hanger

Qty.	Contents
1	Spring Hanger Draw Key
1	½" Lockwasher
1	½"-13 UNC Hex Nut

## SADDLE ASSEMBLIES

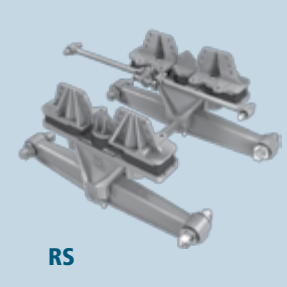


Part Shown 31017-096L

Part No.	Capacity	Height
31017-022L	34K•40K	6"
31017-109L	34K•40K	7⅜"
31017-096L	46K	6"
31017-110L	46K	7⅜"
31017-053	48K•52K – RT Only	6"
31017-077	48K•52K	7⅜"
31017-004	65K	7⅜"



Part No.	Description
06696-000	⅞" Saddle Cap Stud



RS

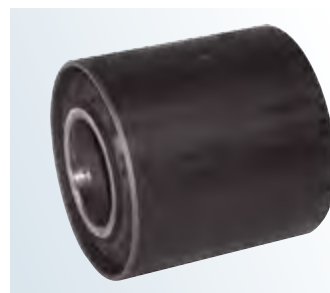


Part Shown 26953-000L

**Part No.**    **Capacity**  
26953-000L 46K-120K



**Part No.**    **Description**  
24209-000 Center Load Cushion



**Part No.**    **Description**  
19279-000L Vertical Drive Bushing

**REBOUND CONTROL STOP NUT KIT**



**31005-001** One Side

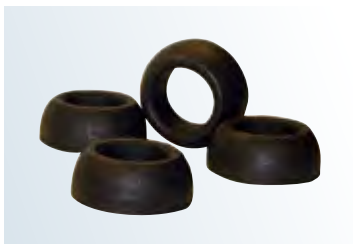
**31005-002** Both Sides

**R•RS•RT•RTE Cross Tubes**



Part No.	Capacity	Length
44642-022	34K	36½"
44643-009L	38K-52K	44⅞"
44642-008L	34K	44⅞"
10397-014	65K	40¾"
07622-003	52K	46"

**Popular Fasteners**



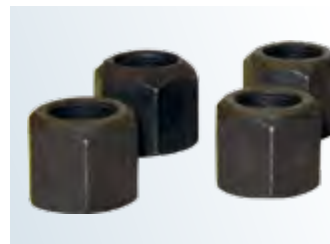
Part Shown 48574-000

**Part No.**    **Description**  
48574-000 ⅞" Spherical Washer  
10948-000 1"-14 UNS Saddle Cap Stud



Part Shown 22962-002

**Part No.**    **Description**  
22962-002 ⅞" Hardened Washer  
22962-006 1" Hardened Washer



Part Shown 08017-000

**Part No.**    **Description**  
50765-000 ⅞" -14 UNF Locknut  
08017-000 1"-14 UNS Locknut





### CONVENTIONAL

### BONDED

### XTRB®

#### STRADDLE



Part Shown 44695-000L

Part No.	Bushing O.D.	Hole Dia.	MTG Centers
44694-000L	2½"	⅝"	4¾"
44695-000L	2¾"	⅝"	4¾"
48304-000	3½"	7⁄8"	5¼"
49210-000L	2¾"	¾"	4¾"
57256-000	2½"	⅝"	4¾"



Part Shown 64400-002L

Part No.	Bushing O.D.	Hole Dia.	MTG Centers
47691-000L	2"	⅝"	4¾"
64400-002L	3¼"	⅝"	4¾"
64400-003L	3¼"	7⁄8"	5¼"
64400-005L	3¼"	¾"	4¾"
64400-009L	3¼"	¾"	5 1⁄16"
69210-000L	2"	¾"	4¾"
67746-000L	2"	7⁄8"	4¾"



Part Shown 66649-002L

Part No.	Bushing O.D.	Hole Dia.	MTG Centers
66649-002L	2"	⅝"	4¾"
66649-003L	2"	15⁄16"	5¼"
66649-005L	2"	13⁄16"	4¾"



ULTRA ROD PLUS



ULTRA ROD

#### TAPER BUSHINGS



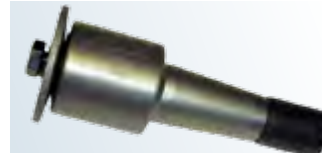
Part Shown 44697-000L

Part No.	Bushing O.D.	Taper Threads	Taper Length
44697-000L	2¾"	1¼"	3"
46735-000L	2¾"	1¼"	1 7⁄8"



Part Shown 64400-004L

Part No.	Bushing O.D.	Taper Threads	Taper Length
64400-004L	3¼"	1¼"	3"
64697-000L	2"	1¼"	3"



Part No.	Bushing O.D.	Taper Threads	Taper Length
66649-004L	2¾"	1¼"	3"

#### OFFSET STRADDLE



Part Shown 47699-001L

Part No.	Bushing O.D.	Hole Dia.	Length
46734-000L	2¾"	¾"	5 1⁄16"
47699-001L	3"	¾"	5 1⁄16"



Part No.	Bushing O.D.	Hole Dia.	Length
66734-000L	2"	¾"	5 1⁄16"

#### THRU HOLE



Part Shown 45477-000L

Part No.	Bushing O.D.	Hole Dia.	Length
24504-000L	2 7⁄8"	1 1⁄8"	3 3⁄4"
44993-000L	3 3⁄8"	1 1⁄8"	3 3⁄4"
45477-000L	3"	1 1⁄8"	3 3⁄4"
46736-000L	2 3⁄4"	1 1⁄8"	3 3⁄4"
47692-000L	2"	7⁄8"	3"
65477-000L	2"	1 1⁄8"	3 3⁄4"



Part No.	Bushing O.D.	Hole Dia.	Length
64400-010	3 1⁄4"	1 1⁄8"	3 3⁄4"

Refer to Torque Rod Selection Guide 45745-148 for additional part number information.



**TWO-PIECE**



**2-PIECE  
EMPTY HUB**



Straddle / Straddle Kits

**60218-000 ULTRA ROD®**  
Tube plus 22<sup>7</sup>/<sub>16</sub>" Spacer End

**60223-000 ULTRA ROD**  
Tube plus 30<sup>3</sup>/<sub>16</sub>" Spacer End

**65781-001 XTRB**  
Tube plus 30<sup>3</sup>/<sub>16</sub>" Spacer End



Straddle / Taper Kits

**60215-000 ULTRA ROD**  
Tube plus 22<sup>7</sup>/<sub>16</sub>" Spacer End

**60220-000 ULTRA ROD**  
Tube plus 22<sup>7</sup>/<sub>16</sub>" Spacer End

**65781-000 ULTRA ROD® PLUS™**  
Tube plus 30<sup>3</sup>/<sub>16</sub>" Spacer End

**65781-002 XTRB**  
Tube plus 30<sup>3</sup>/<sub>16</sub>" Spacer End



Empty Hubs

**ULTRA ROD PLUS**

Part No.	Length	I.D.
64473-000 Tube End		2 <sup>3</sup> / <sub>4</sub> "
64474-000 Spacer End	30"	2 <sup>3</sup> / <sub>4</sub> "



**2-PIECE WITH  
BUSHINGS**



Two-piece with bushings

**ULTRA ROD**

Part No.	Length	Bushing
<b>Tube End – Straddle</b>		
66610-000H		47691-000L
66767-000H		69210-000H
<b>Tube End – Taper</b>		
66620-000H		64809-000H
66630-000H		64697-000H
66640-000H		66734-000H
<b>Spacer End – Straddle</b>		
66660-000H	30 <sup>5</sup> / <sub>16</sub> "	47691-000L
66661-000H	22 <sup>7</sup> / <sub>16</sub> "	47691-000L
66701-000H	22 <sup>7</sup> / <sub>16</sub> "	65477-000H
<b>Spacer End – Taper</b>		
66671-000H	22 <sup>7</sup> / <sub>16</sub> "	64809-000H
66680-000H	30 <sup>5</sup> / <sub>16</sub> "	64697-000H
66681-000H	22 <sup>7</sup> / <sub>16</sub> "	64697-000H
66691-000H	22 <sup>7</sup> / <sub>16</sub> "	66735-000H



Two-piece with PLUS bushings

**ULTRA ROD PLUS**

Part No.	Length	Bushing
<b>Tube End – Straddle</b>		
46610-001		64400-002L
<b>Spacer End – Straddle</b>		
46661-001	30 <sup>3</sup> / <sub>16</sub> "	64400-002L
<b>Spacer End – Taper</b>		
46681-001	30 <sup>3</sup> / <sub>16</sub> "	64400-004L



Two-piece with XTRB bushings

**ULTRA ROD PLUS with XTRB**

Part No.	Length	Bushing
<b>Tube End – Straddle</b>		
46610-003		66649-002L
46661-002		66649-002L
<b>Spacer End – Taper</b>		
46681-002	30 <sup>3</sup> / <sub>16</sub> "	66649-004L

**TORQUE ROD SHIMS**



Part No.	Thickness
49689-000	1/16" COMFORT AIR, HAS, HTS, PRIMAAX EX, FIREMAAX EX
57856-000	1/32" HAS, HTB 175M
65640-001	1/32" HTB 400LT

**TORQUE ROD BRACKET**



Part No.	
22186-000	Straddle Mount, 5/8" Bolt Mounting

Refer to Torque Rod Selection Guide 45745-148 for additional part number information.



### ONE-PIECE



**ULTRA ROD** – Straddle / Straddle

Part No.	Length	Bushing
62007-365	14 <sup>3</sup> / <sub>8</sub> "	47691-000L
48411-006	14 <sup>7</sup> / <sub>16</sub> "	47691-000L
49681-001	14 <sup>7</sup> / <sub>16</sub> "	47691-000L
57950-007	14 <sup>7</sup> / <sub>16</sub> "	47691-000L
58757-005	21 <sup>1</sup> / <sub>2</sub> "	47691-000L
62000-560	22 <sup>1</sup> / <sub>16</sub> "	47691-000L
62000-565	22 <sup>1</sup> / <sub>4</sub> "	47691-000L
62001-580	22 <sup>3</sup> / <sub>16</sub> "	47691-000L
62700-570	22 <sup>7</sup> / <sub>16</sub> "	69210-000L
62000-565N	22 <sup>1</sup> / <sub>4</sub> "	*
58745-010	24 <sup>1</sup> / <sub>4</sub> "	*
62000-645N	25 <sup>3</sup> / <sub>8</sub> "	*

**ULTRA ROD** – Straddle / Taper

62650-505	19 <sup>7</sup> / <sub>8</sub> "	69210-000L 64697-000L
62650-535	21 <sup>1</sup> / <sub>16</sub> "	69210-000L 64697-000L
60827-605A	23 <sup>3</sup> / <sub>16</sub> "	69210-000L
60827-605B		47692-000L
60827-645A	25 <sup>3</sup> / <sub>8</sub> "	69210-000L
60827-645B		47692-000L
62350-615	24 <sup>3</sup> / <sub>16</sub> "	47691-000L 64697-000L
62350-635	25"	47691-000L 64697-000L

\* Torque rod bushings are non-serviceable.

\*\* Specify length in millimeter. Refer to Torque Rod Selection Guide Literature No. 45745-148 for additional part number information.



**ULTRA ROD PLUS** – Straddle / Straddle

Part No.	Length	Bushing
72000-XXXS	**	64400-002L
721XX-XXX	**	64400-003L

**ULTRA ROD PLUS** – Straddle / Taper

72350-XXX	**	64400-002L 64400-004L
72850-XXX	**	64400-003L 64400-006L
72950-XXX	**	64400-003L 64400-004L



**XTRB** – Straddle / Straddle

Part No.	Length	Bushing
92000-XXX	**	66649-002L

**XTRB** – Straddle / Taper

92350-XXX	**	66649-002L 66649-004L
-----------	----	--------------------------



**ULTRA ROD PLUS**



**TRAAX ROD**



Part Shown 77906-398

Part No.	Model
<b>Spartan Motorhome</b>	
78562-001	HTB 210 - Spartan
78562-002	HTB 210
78562-003	HTB 210
<b>International Truck</b>	
77906-398	HTB 400LT

### \*TRAAX ROD™ FABRICATED ONE-PIECE



**Heavy-duty** – Straddle / Straddle

**Part No.**  
\*\*824X-XXXX-XXX



**Heavy-duty** – Straddle / Taper

**Part No.**  
\*\*824X-XXXX-XXX

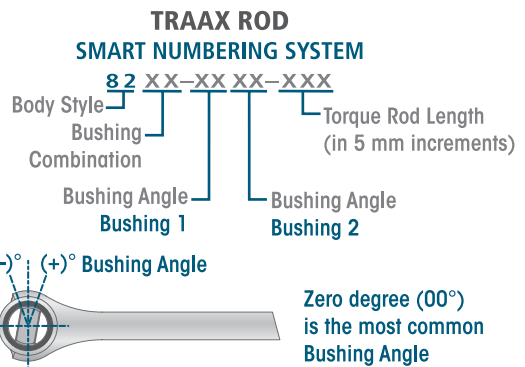
**Severe Duty** – Straddle / Straddle

**Part No.**  
\*\*823X-XXXX-XXX

**Severe Duty** – Straddle / Taper

**Part No.**  
\*\*823X-XXXX-XXX

\* TRAAX ROD torque rod bushings are non-serviceable.



\*\* The TRAAX ROD family uses the Smart Numbering System, in which each digit signifies the body style (heavy-duty or severe-duty), bushing combination, bushing hole diameter, bushing clocking angle and the torque rod length. Refer to TRAAX ROD Product Profile, Literature No. 45745-475 for additional part number information.



Truck Commercial Vehicle Systems  
 800 South Frontage Road  
 Woodridge, IL 60517-4904 USA

1.866.755.5968 (Toll-free U.S. and Canada)  
 630.910.2800 (Outside U.S. and Canada)  
 Fax 630.910.2899

© 2019 Hendrickson USA, L.L.C. All Rights Reserved. All trademarks shown are owned by Hendrickson USA, L.L.C., or one of the affiliates, in one or more countries.

Information contained in this literature was accurate at the time of publication. Product changes may have been made after the copyright date that are not reflected.

45745-035 Rev K 07-19  
 © 1997 – 2019 Hendrickson USA, L.L.C. All Rights Reserved



## Hendrickson PLUS+

"Parts Look Up System" is an online tool to help with your serviceable parts and cross reference needs. On the go? PLUS+ is compatible with mobile devices: smart phones and tablets, just open in browser: [www.hendrickson-intl.com/partsandservice](http://www.hendrickson-intl.com/partsandservice)

