

PARTS LIST

PRIMAAX[®] EX Rear Air Suspension for Freightliner • Western Star Vehicles

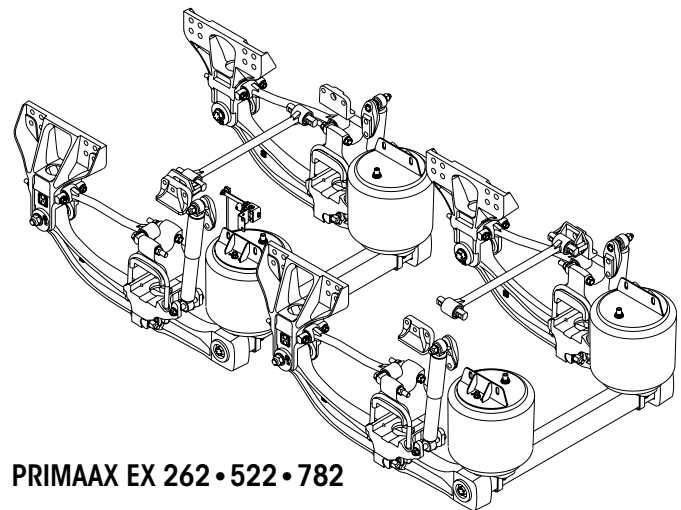
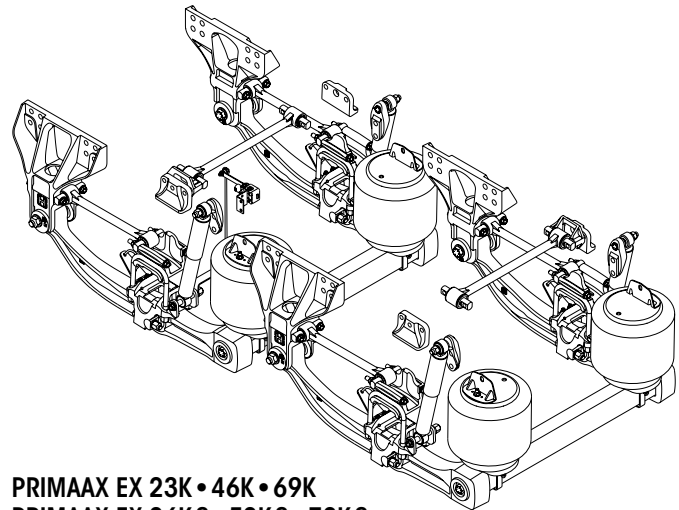
LIT NO: SP-230

DATE: March 2021

REVISION: B

CONTENTS

| Description | PAGE |
|---|------|
| Technical Notes | 2 |
| U-Beam Assembly Enhancement Aftermarket Service Kit | 2 |
| Notes | 2 |
| Selection Guides | |
| ■ PRIMAAX EX 23K • 46K • 69K PRIMAAX EX 26KS • 52KS • 78KS | 3 |
| ■ PRIMAAX EX 26K • 52K • 78K | 4-5 |
| Severe Service Kits | 5 |
| Parts Lists | |
| ■ PRIMAAX EX 23K • 46K • 69K PRIMAAX EX 26KS • 52KS • 78KS | 6 |
| ■ PRIMAAX EX 26K • 52K • 78K | 8 |
| Special Tools | 10 |



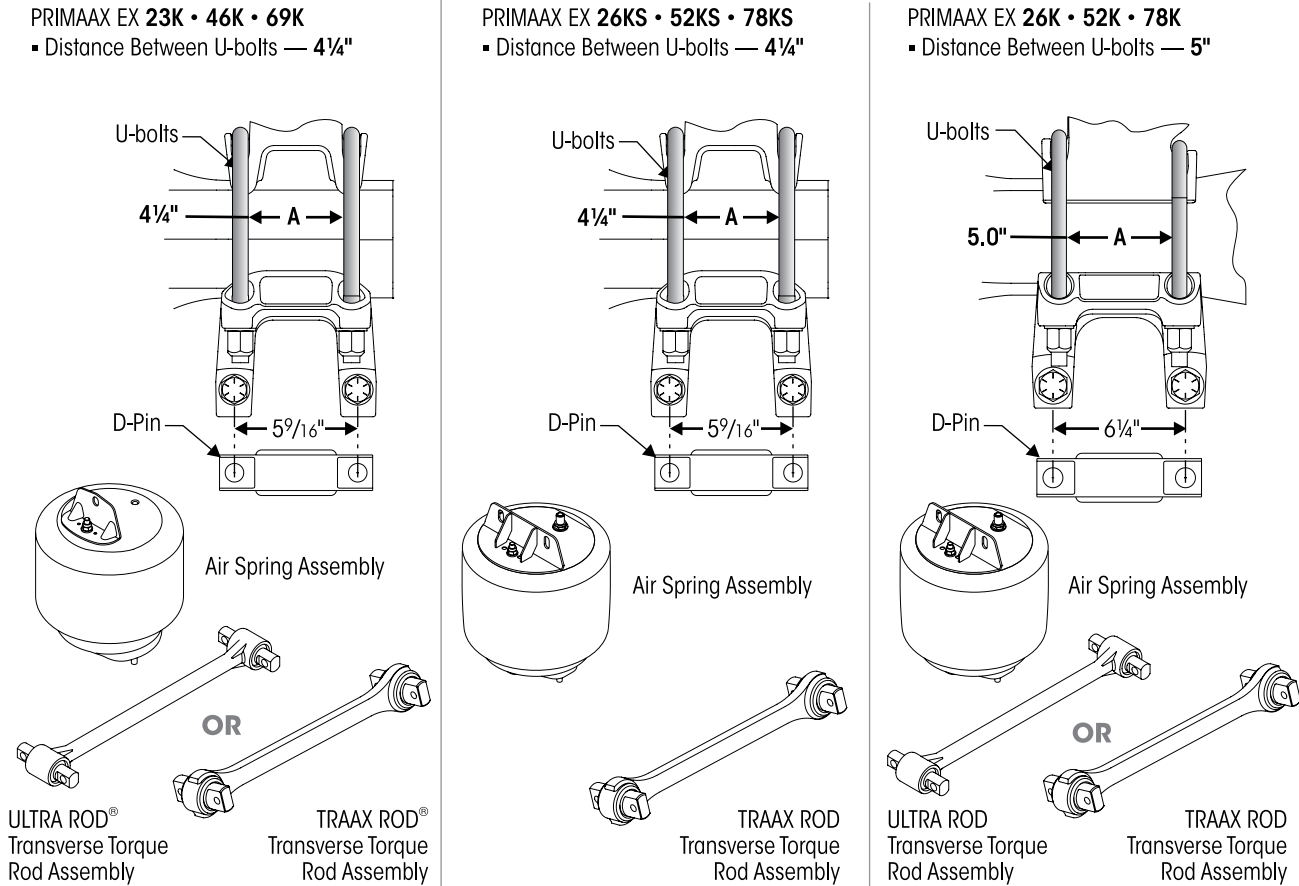


■ Technical Notes

To determine suspension rating/capacity, see Figure 1. Refer to Literature No. SP-164 for FIREMAAX EX, available online at www.hendrickson-intl.com.

FIGURE 1

SUSPENSION RATING / CAPACITY



■ U-Beam Assembly Enhancement Aftermarket Service Kit 69565-001, Axle Set

| PART NO. | DESCRIPTION | QTY. | COMMENTS |
|-----------|--|------|--|
| 69351-000 | Sikaflex 221 Polyurethane Sealant, 300 ml Tube | 1 | In the event any service to the suspension requiring disassembly of a U-Beam assembly equipped with integrated end caps, the Loctite 277, tamper resistant caps and Sikaflex 221 polyurethane sealant must be properly installed to ensure components function to their highest efficiency. The enhancement components can be purchased individually or as an aftermarket service kit. |
| 69570-000 | Loctite® 277 - 10 ml Bottle | 1 | |
| * | Tamper Resistant Cap | 2 | |
| * | ⅞"-9 UNC x 3¾" Hex Bolt | 2 | |
| * | ⅞" H-Coat Flat Washer | 2 | |

* Item included in assembly / kit only, part not sold separately.

NOTES Quantities specified are shown for a tandem suspension. Adjust quantities for single or tridem suspensions. Quantities of service kit components may vary from amount shown in lists.

* Item included in kit/assembly only, part not sold separately.

** Transverse Torque Rods are mandatory for the PRIMAAX EX suspensions regardless of axle spacing. See Literature Nos. 59310-004 and 59310-058 for more information. TRAAX ROD bushings are non-serviceable, the entire torque rod assembly requires replacement. Visit the TRAAX ROD website www.traaxrods.com for more information.

*** S-cam is not required for disc brakes.

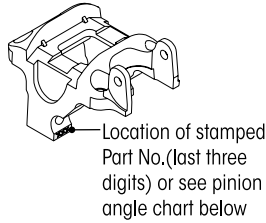
**** As originally equipped by the vehicle manufacturer.

***** Alternate configuration of the QUIK-ALIGN fasteners. The locknuts located inboard will allow additional clearance for wider tires or tires with chains. Tightening is still required **ONLY** on the locknut.

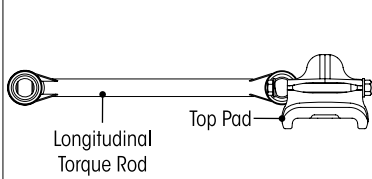


■ Bottom Cap • Longitudinal Torque Rod Assembly • Top Pad • Torque Rod Spacer Selection Guide

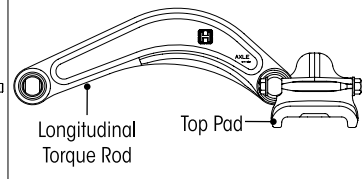
Bottom Cap



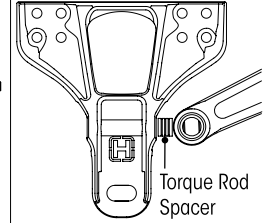
DRUM BRAKE Configuration



DISC BRAKE Configuration



Torque Rod Spacer



PRIMAAX EX 23K • 46K • 69K • 26KS • 52KS • 78KS

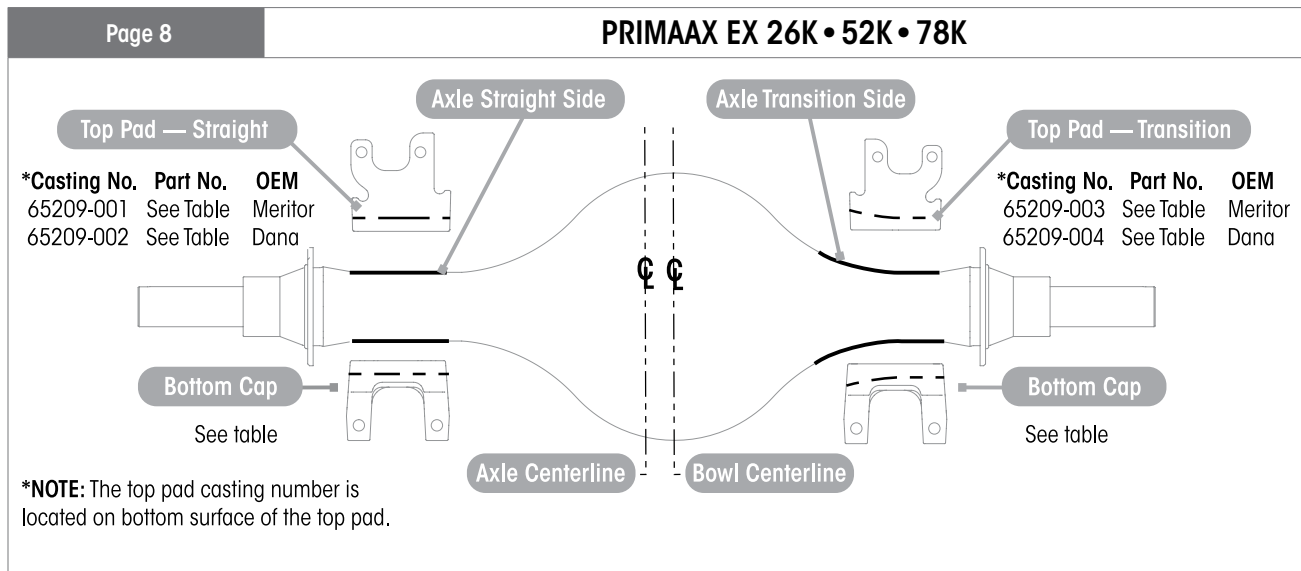
| Drum Brakes | Pinion Angle | D-Pin Bolt Length | Bottom Cap | *Longitudinal Torque Rod Assembly | Pinion Angle | D-Pin Bolt Length | Bottom Cap | *Longitudinal Torque Rod Assembly |
|-------------|--------------|-------------------|------------------------------------|------------------------------------|--------------|-------------------|------------------------------------|------------------------------------|
| | Front | | | | Rear | | | |
| | 1.5° | 5" | 60556-025 | 67428-425A (LH) 67428-425B (RH) | 6.5° | 5½" | 60556-065 | 67430-435A (LH) 67430-435B (RH) |
| 2.5° | 60556-025 | | 67428-430A (LH) 67428-430B (RH) | 8.0° | 4¾" | 60556-100 | 67430-465A (LH) 67430-465B (RH) | |
| 3.0° | 60556-030 | | 67428-435A (LH) 67428-435B (RH) | 8.5° | | 60556-105 | 67430-470A (LH) 67430-470B (RH) | |
| 3.5° | 60556-035 | 9.5° | | 60556-105 | | | | |
| 5.0° | 5½" | 60556-050 | 67428-475A (LH) 67428-475B (RH) | 10.0° | 5" | 60556-100 | | |
| | | | | 10.5° | | 60556-105 | | |
| | | | | 11.0° | | 60556-110 | | |
| | | | | 11.5° | | 60556-115 | | |
| | | | | 12.0° | | 60556-120 | | |

| Air Disc Brakes | Pinion Angle | D-Pin Bolt Length | Bottom Cap | *Longitudinal Torque Rod Assembly | **Torque Rod Pinion Spacer | Top Pad | | |
|-----------------|--------------|-------------------|------------|-----------------------------------|----------------------------|-----------|-----------|-------|
| | Front | | | | | | Left | Right |
| | 1.5° | 5" | 60556-525 | 68801-101 | 10.5 mm | 65289-001 | 65289-002 | |
| 3.0° | 60556-530 | | 16.5 mm | | | | | |
| 3.5° | 60556-535 | | | | | | | |
| 5.0° | 5½" | 60556-550 | 68801-205 | 15 mm | 65289-001 | 65289-002 | | |
| 6.5° | | 60556-565 | | | | | | |
| Rear | | | | | | | | |
| 8.0° | 4¾" | 60556-600 | 68801-205 | 4.5 mm | 65289-001 | 65289-002 | | |
| 8.5° | | 60556-605 | | | | | 10.5 mm | |
| 9.5° | | 60556-605 | | | | | | |
| 10.0° | 5" | 60556-600 | 68801-205 | 15 mm | 65289-001 | 65289-002 | | |
| 10.5° | | 60556-605 | | | | | | |
| 11.0° | | 60556-610 | | | | | | |
| 11.5° | 5" | 60556-615 | 68801-205 | 15 mm | 65289-001 | 65289-002 | | |
| 12.0° | | 60556-620 | | | | | | |

NOTES: ♦ Torque rod bushings are non-serviceable, replacement requires complete torque rod assembly with bushings.
 ♦♦ Not supplied by Hendrickson, used for reference only. Hendrickson is not responsible for components supplied by the vehicle manufacturer. For assistance with maintenance and rebuild instructions on these components see vehicle manufacturer.



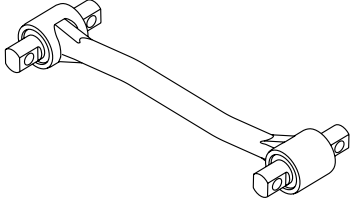
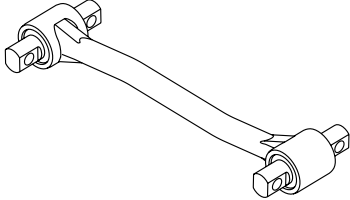
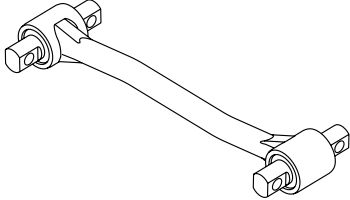
■ Selection Guide



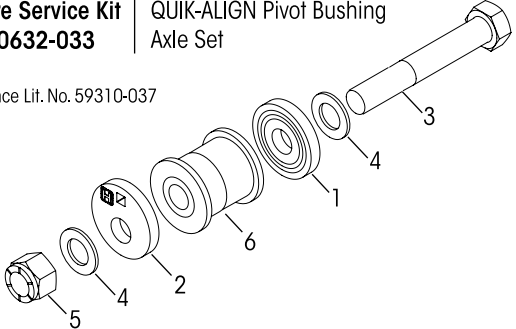
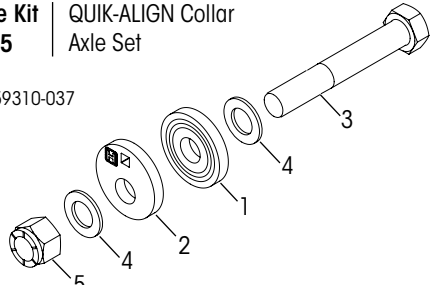
| Axle Manufacturer | Beam Spacing | Pinion Angle | Bottom Cap | | | | Top Pad | | | | |
|---|--------------|--------------|------------|------------|------------|------------|-----------|------------|------------|------------|-----------|
| | | | Left Side | | Right Side | | Left Side | | Right Side | | |
| | | | Straight | Transition | Straight | Transition | Straight | Transition | Straight | Transition | |
| SINGLE AXLE | | | | | | | | | | | |
| Meritor | 40 | 3.0° | | 65208-005 | 65208-001 | | | 65273-003 | 65210-001 | | |
| | | 5.0° | | | | | | | | | |
| | 40.5 | 3.0° | | 67913-005 | | | | | | | |
| | | 5.0° | | | | | | | | | |
| TANDEM FRONT • TRIDEM FRONT • TRIDEM MID | | | | | | | | | | | |
| Meritor | 40 | 1.5° | 65208-001 | | | 65208-006 | 65210-001 | | | 65210-003 | |
| | 40.3 | 3.5° | | | | | | | | 67913-006 | 65273-003 |
| | 40.5 | 1.5° | | | | | | | | | |
| | | 3.5° | | | | | | | | | |
| Dana | 40 | 3.5° | 65208-002 | | | 65208-008 | 65210-002 | | | 65210-004 | |
| | 40.5 | 2.5° | | | | | | | | 67913-008 | 65273-004 |
| TANDEM REAR • TRIDEM REAR | | | | | | | | | | | |
| Meritor | 40 | 12.0° | | 65208-009 | 65208-003 | | | 65210-003 | 65210-001 | | |
| | 40.3 | 11.5° | | | | | | | | | |
| | 40.5 | 12.0° | | | | | | | | | 67913-009 |
| 11.5° | | | | | | | | | | | |
| Dana | 40 | 11.5° | 65208-011 | 65208-004 | | | 65210-004 | 65210-002 | | | |
| | 40.5 | 10.0° | | | | | | | | | 67913-011 |



■ Selection Guide

| Page 8 | | PRIMAAX EX 26K • 52K • 78K | | | | |
|---|-------------------|----------------------------|--------------|-------------------------|------------|-------------------------|
| | Axle Manufacturer | Beam Spacing | Pinion Angle | Longitudinal Torque Rod | | Torque Rod Fastener Kit |
| | | | | Left Side | Right Side | |
| SINGLE AXLE | | | | | | |
|  | Meritor | 40 | 3.0° | 65302-470A | 65302-470B | 49176-032 |
| | | | 5.0° | 65302-475A | 65302-475B | |
| | | 40.5 | 3.0° | 65302-470A | 65302-470B | |
| | | | 5.0° | 65302-475A | 65302-475B | |
| TANDEM FRONT • TRIDEM FRONT • TRIDEM MID | | | | | | |
|  | Meritor | 40 | 1.5° | 65302-460A | 65302-460B | 49176-032 |
| | | 40.3 | 3.5° | 65302-470A | 65302-470B | 49176-028 |
| | | 40.5 | 1.5° | 65302-460A | 65302-460B | 49176-032 |
| | | | 3.5° | 65302-470A | 65302-470B | 49176-028 |
| Dana | 40 | 3.5° | 65302-470A | 65302-470B | 49176-028 | |
| | 40.5 | 2.5° | | | | |
| TANDEM REAR • TRIDEM REAR | | | | | | |
|  | Meritor | 40 | 12.0° | 65302-525A | 65302-525B | 49176-032 |
| | | 40.3 | 11.5° | 65302-520A | 65302-520B | 49176-028 |
| | | 40.5 | 12.0° | 65302-525A | 65302-525B | 49176-032 |
| | Dana | 40 | 11.5° | 65302-520A | 65302-520B | 49176-028 |
| 40.5 | | 10.0° | | | | |

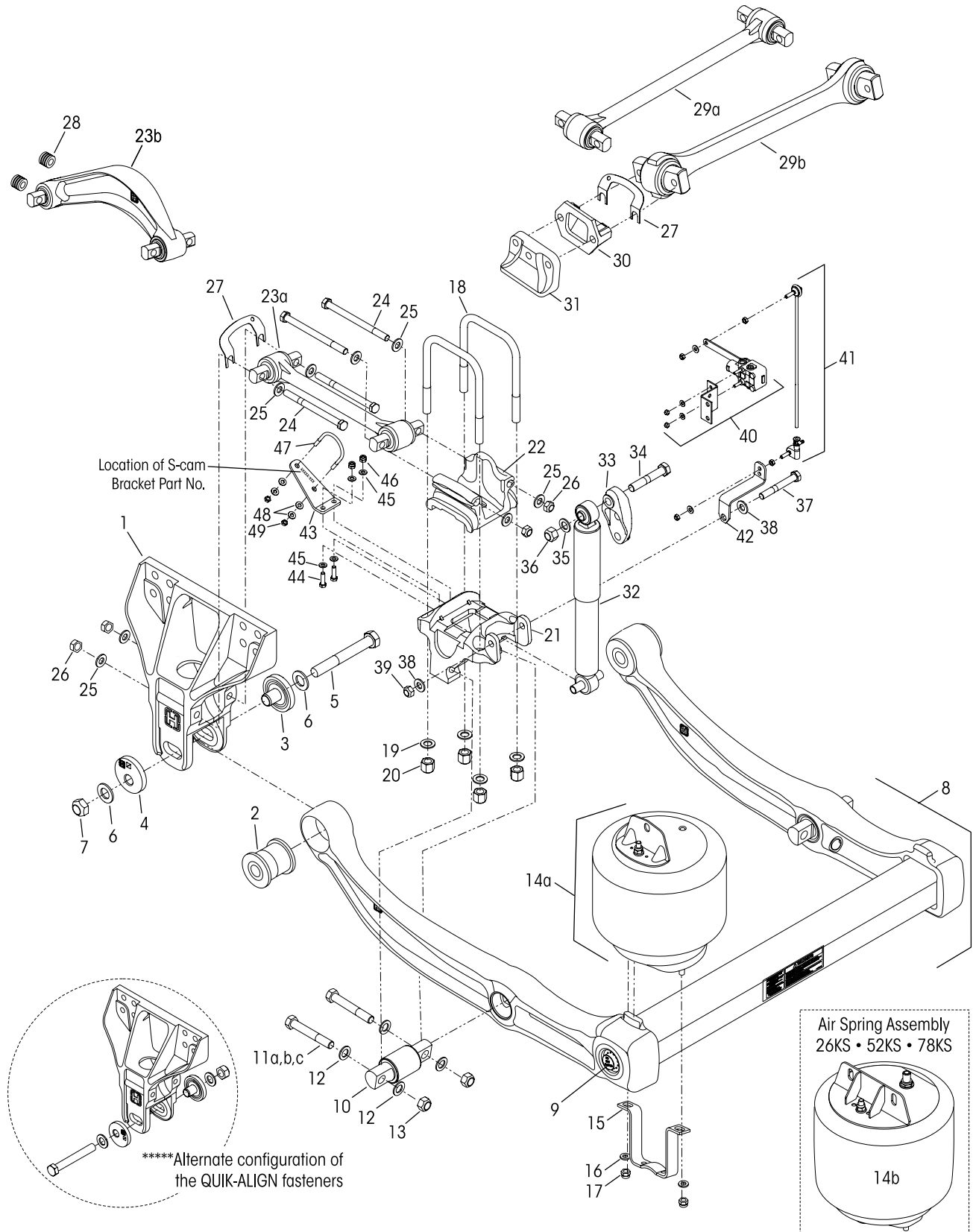
■ Severe Service Kits

| <p>Severe Service Kit No. 60632-033 QUIK-ALIGN Pivot Bushing Axle Set</p> <p>Reference Lit. No. 59310-037</p>  | <p>PRIMAAX EX – 10" Ride Height</p> <table border="1"> <thead> <tr> <th>KEY NO.</th> <th>CONTENTS</th> <th>QTY.</th> </tr> </thead> <tbody> <tr> <td>1</td> <td>QUIK-ALIGN Concentric Collar</td> <td>2</td> </tr> <tr> <td>2</td> <td>QUIK-ALIGN Eccentric Collar</td> <td>2</td> </tr> <tr> <td>3</td> <td>1 ¼"-12 UNF x 8" Bolt</td> <td>2</td> </tr> <tr> <td>4</td> <td>1 ¼" Hardened Washer</td> <td>4</td> </tr> <tr> <td>5</td> <td>1 ¼"-12 UNF Nylock Nut</td> <td>2</td> </tr> <tr> <td>6</td> <td>QUIK-ALIGN Pivot Bushing</td> <td>2</td> </tr> <tr> <td>7</td> <td>P-80 Bushing Lubricant - 10 ml</td> <td>2</td> </tr> </tbody> </table> | KEY NO. | CONTENTS | QTY. | 1 | QUIK-ALIGN Concentric Collar | 2 | 2 | QUIK-ALIGN Eccentric Collar | 2 | 3 | 1 ¼"-12 UNF x 8" Bolt | 2 | 4 | 1 ¼" Hardened Washer | 4 | 5 | 1 ¼"-12 UNF Nylock Nut | 2 | 6 | QUIK-ALIGN Pivot Bushing | 2 | 7 | P-80 Bushing Lubricant - 10 ml | 2 |
|--|---|---------|----------|------|---|------------------------------|---|---|-----------------------------|---|---|-----------------------|---|---|----------------------|---|---|------------------------|---|---|--------------------------|---|---|--------------------------------|---|
| KEY NO. | CONTENTS | QTY. | | | | | | | | | | | | | | | | | | | | | | | |
| 1 | QUIK-ALIGN Concentric Collar | 2 | | | | | | | | | | | | | | | | | | | | | | | |
| 2 | QUIK-ALIGN Eccentric Collar | 2 | | | | | | | | | | | | | | | | | | | | | | | |
| 3 | 1 ¼"-12 UNF x 8" Bolt | 2 | | | | | | | | | | | | | | | | | | | | | | | |
| 4 | 1 ¼" Hardened Washer | 4 | | | | | | | | | | | | | | | | | | | | | | | |
| 5 | 1 ¼"-12 UNF Nylock Nut | 2 | | | | | | | | | | | | | | | | | | | | | | | |
| 6 | QUIK-ALIGN Pivot Bushing | 2 | | | | | | | | | | | | | | | | | | | | | | | |
| 7 | P-80 Bushing Lubricant - 10 ml | 2 | | | | | | | | | | | | | | | | | | | | | | | |
| <p>Severe Service Kit No. 60632-015 QUIK-ALIGN Collar Axle Set</p> <p>Reference Lit. No. 59310-037</p>  | <p>PRIMAAX EX – 10" Ride Height</p> <table border="1"> <thead> <tr> <th>KEY NO.</th> <th>CONTENTS</th> <th>QTY.</th> </tr> </thead> <tbody> <tr> <td>1</td> <td>QUIK-ALIGN Concentric Collar</td> <td>2</td> </tr> <tr> <td>2</td> <td>QUIK-ALIGN Eccentric Collar</td> <td>2</td> </tr> <tr> <td>3</td> <td>1 ¼"-12 UNF x 8" Bolt</td> <td>2</td> </tr> <tr> <td>4</td> <td>1 ¼" Hardened Washer</td> <td>4</td> </tr> <tr> <td>5</td> <td>1 ¼"-12 UNF Nylock Nut</td> <td>2</td> </tr> </tbody> </table> | KEY NO. | CONTENTS | QTY. | 1 | QUIK-ALIGN Concentric Collar | 2 | 2 | QUIK-ALIGN Eccentric Collar | 2 | 3 | 1 ¼"-12 UNF x 8" Bolt | 2 | 4 | 1 ¼" Hardened Washer | 4 | 5 | 1 ¼"-12 UNF Nylock Nut | 2 | | | | | | |
| KEY NO. | CONTENTS | QTY. | | | | | | | | | | | | | | | | | | | | | | | |
| 1 | QUIK-ALIGN Concentric Collar | 2 | | | | | | | | | | | | | | | | | | | | | | | |
| 2 | QUIK-ALIGN Eccentric Collar | 2 | | | | | | | | | | | | | | | | | | | | | | | |
| 3 | 1 ¼"-12 UNF x 8" Bolt | 2 | | | | | | | | | | | | | | | | | | | | | | | |
| 4 | 1 ¼" Hardened Washer | 4 | | | | | | | | | | | | | | | | | | | | | | | |
| 5 | 1 ¼"-12 UNF Nylock Nut | 2 | | | | | | | | | | | | | | | | | | | | | | | |



23K • 46K • 69K Capacity
26KS • 52KS • 78KS Capacity

10" Ride Height
S – designates Small Clamp Group



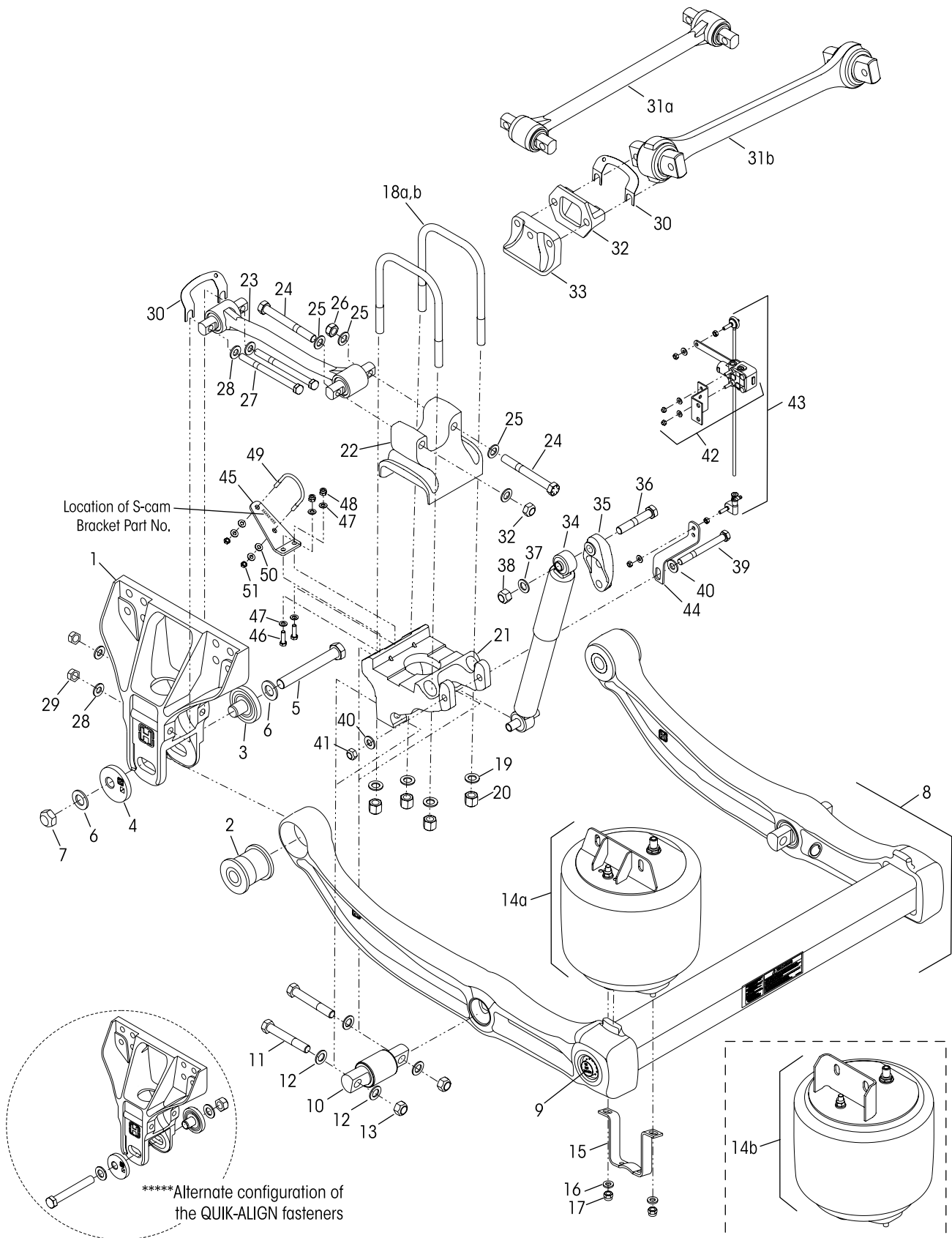


| | | | VEHICLE | | | | VEHICLE |
|---------|------------|---|---------|---------|---------------|--|---------------|
| KEY NO. | PART NO. | DESCRIPTION | QTY. | KEY NO. | PART NO. | DESCRIPTION | QTY. |
| 1 | 67706-000 | EX Frame Hanger | 4 | 21 | 60556-XXX | Bottom Cap - Front and Rear (Casting No. 60272-000), see Selection Guide on Page 3 | 4 |
| | | QUIK-ALIGN Pivot Bushing Service Kit, Includes Key Nos. 2-7, 50 | | 22 | 65289-000 | Top Pad for Drum Brakes Only, see Selection Guide on Page 3 for Air Disc Brake | 4 |
| | 60961-720 | One Wheel End | | 23 | | Longitudinal Torque Rod, see Selection Guide on Page 3 | 4 |
| | 60632-020 | Axle Set | | a | 67428-XXX | Drum Brakes | |
| | | QUIK-ALIGN Collar Service Kit, Includes Key Nos. 3-7 | | b | 68801-XXX | Air Disc Brakes | |
| | 60632-019 | One Wheel End | | | 49176-032 | Longitudinal Torque Rod Fastener Service Kit, One Torque Rod, Includes Key Nos. 24a-26 | |
| | 60632-021 | Axle Set | | 24 | | *5/8"-11 UNC Bolt | 16 |
| | 60632-018 | QUIK-ALIGN Fastener Service Kit, One Wheel End, Includes Key Nos. 5-7 | | a | | 8" Length | |
| 2 | | *QUIK-ALIGN Pivot Bushing | 4 | b | | 9" Length | |
| 3 | | *QUIK-ALIGN Concentric Collar | 4 | 25 | | *5/8" Flat Washer | 32 |
| 4 | | *QUIK-ALIGN Eccentric Collar | 4 | 26 | | *5/8"-11 UNC Locknut | 16 |
| 5 | | *1"-14 UNF x 7 1/2" Hex Bolt | 4 | 27 | 49689-000L | Shim | As required |
| 6 | | *1" Flat Washer | 8 | 28 | | Torque Rod Pinion Spacer, see Selection Guide on Page 3 | 8 |
| 7 | | *1"-14 UNF Locknut | 4 | 29 | | **Transverse Torque Rod Assembly, Includes Bushings, Specify length in mm | 2 |
| 8 | | U-Beam Assembly, Includes Key Nos. 2, 9-10 | 2 | a | 67428-XXX | ULTRA ROD with Non-serviceable Bushings | |
| | 67249-004 | • Front | | b | 8240-0000-XXX | TRAAX ROD®, Replaces 72000-XXXX and 72000-XXXX | |
| | 67249-012 | 34" Frame Width | | 30 | 22186-000 | Transverse Torque Rod Frame Bracket | 2 |
| | 67249-010 | 34 5/16" Frame Width | | 31 | 60593-000L | Axle Stop, Frame Mounted | 4 |
| | | 34 1/2" Frame Width | | 32 | | Shock Absorber | 4 |
| | 67249-003 | • Rear | | | 60657-003L | 23K • 46K • 69K | |
| | 67249-011 | 34" Frame Width | | | 60665-011 | 26KS • 52KS • 72KS | |
| | 67249-011 | 34 5/16" Frame Width | | 33 | 67463-002 | Upper Shock Frame Bracket | 4 |
| | 67249-009 | 34 1/2" Frame Width | | | | Single Shock Fastener Service Kits, Includes Key Nos. 34-39 | |
| 9 | 69565-001 | U-Beam Assembly Enhancement Aftermarket Service Kit, Axle Set, see Page 2 for contents | | | 50754-030 | 23K • 46K • 69K | |
| | | Single D-Pin Bushing Service Kit, Includes Key Nos. 10, 11a, 12-13 | | | 50754-029 | 26KS • 52KS • 72KS | |
| | 34013-107 | Includes Key Nos. 10, 11a, 12-13 | | 34 | | *3/4"-10 UNC x 4 1/4" Upper Shock Bolt | 4 |
| | 34013-117 | Includes Key Nos. 10, 11b, 12-13 | | 35 | | *3/4" Flat Washer | 4 |
| | 34013-201 | Includes Key Nos. 10, 11c, 12-13 | | 36 | | *3/4"-10 UNC Locknut | 4 |
| 10 | | *D-Pin Bushing | 4 | 37 | | *5/8"-11 UNC Lower Shock Bolt | 4 |
| | | D-Pin Fastener Service Kit, Axle Set, Includes Key Nos. 11a, 12-13 | | 38 | | *5/8" Flat Washer | 8 |
| | 56659-009 | Includes Key Nos. 11b, 12-13 | | 39 | | *5/8"-11 UNC-2B Locknut | 4 |
| | 56659-012 | Includes Key Nos. 11c, 12-13 | | | | Height Control Valve Assembly Service Kit, Includes Key Nos. 40-42 | |
| | 56659-014 | Includes Key Nos. 11c, 12-13 | | | 58525-019 | Single | |
| 11 | | *3/4"-16 UNF Bolt | 8 | | 58525-024 | Axle Set | |
| a | | Length 5" | | 40 | 57977-000 | ****Height Control Valve Assembly | |
| b | | Length 4 3/4" | | 41 | 58994-005L | ****HCV Linkage Assembly | |
| c | | Length 5 1/4" | | 42 | 60921-000 | ****Height Control Valve Linkage Bracket | |
| 12 | | *3/4" Flat Washer | 16 | 43 | 64508-XXX | ***S-cam Support Bracket See Part No. on Component | 4 |
| 13 | | *3/4"-16 UNF Locknut | 8 | | | ***S-cam Fastener Service Kit, Axle Set, Includes Key Nos. 44-49 | |
| | | Single Air Spring Service Kit, 23K • 46K • 69K, Includes Key Nos. 14a, 15-17 | | 44 | | *3/8"-16 UNC x 1 1/4" Hex Bolt | 8 |
| | 60961-230 | 26KS • 52KS • 72KS, Includes Key Nos. 14b, 15-17 | | 45 | | *3/8" Hardened Washer | 16 |
| | 60961-744 | | | 46 | | *3/8"-16 UNC Locknut | 8 |
| 14 | | Air Spring Assembly, Includes Upper Frame Bracket | | 47 | | *5/16" S-Cam U-bolt | 4 |
| a | 67043-002L | 23K • 46K • 69K | | 48 | | *5/16" Hardened Washer | 16 |
| b | 67247-002 | 26KS • 52KS • 72KS | | 49 | | *5/16"-18 UNC Locknut | 8 |
| | 49177-006 | Single Lower Air Spring Service Kit, Includes Key Nos. 16-17 | | 50 | 70867-001 | P-80 Lubricant - 10 ml (Not Shown) | Per Bushing 1 |
| 15 | 60911-002 | Lower Air Spring Mounting Bracket | 4 | | | | |
| 16 | | *1/2" Flat Washer | 8 | | | | |
| 17 | | *1/2"-13 UNC Locknut | 8 | | | | |
| | 48718-127 | U-bolt Service Kit, One Wheel End, Includes Key Nos. 18-20 | | | | | |
| 18 | | *3/4" Square U-bolt - Length 8 7/8" | 8 | | | | |
| 19 | | *3/4" Flat Washer | 16 | | | | |
| 20 | | *3/4"-16 UNF U-bolt Locknut | 16 | | | | |



PRIMAAX EX 26K • 52K • 78K

10" Ride Height



Location of S-cam
Bracket Part No.

****Alternate configuration of
the QUICK-ALIGN fasteners



| | | | VEHICLE | | | | VEHICLE |
|---------|-----------|--|---------|-----------|---------------|---|---------|
| KEY NO. | PART NO. | DESCRIPTION | QTY. | KEY NO. | PART NO. | DESCRIPTION | QTY. |
| 1 | 67706-000 | EX Frame Hanger | 4 | 19 | | *3/4" Flat Washer | 16 |
| | | QUIK-ALIGN Pivot Bushing Service Kit, Includes Key Nos. 2-7, 52 | | 20 | | *3/4"-16 UNF U-bolt Locknut | 16 |
| | 60961-720 | One Wheel End | | 21 | | Bottom Cap, <i>see Selection Guide on Page 4</i> | 4 |
| | 60632-020 | Axle Set | | 22 | | Top Pad, <i>see Illustration on Page 4</i> | 2 |
| | | QUIK-ALIGN Collar Service Kit, Includes Key Nos. 3-7 | | 23 | | Longitudinal Torque Rod, <i>see Selection Guide on Page 5</i> | 4 |
| | 60632-019 | One Wheel End | | | | Longitudinal Torque Rod Fastener Service Kit, Axle Set | |
| | 60632-021 | Axle Set | | 49176-031 | | Includes Key Nos. 24-29 | |
| | 60632-018 | QUIK-ALIGN Fastener Service Kit, One Wheel End, Includes Key Nos. 5-7 | | 49176-032 | | Includes Key Nos. 27-29 | |
| 2 | | *QUIK-ALIGN Pivot Bushing | 4 | 24 | | *3/4"-16 UNF x 6" Hex Bolt | 8 |
| 3 | | *QUIK-ALIGN Concentric Collar | 4 | 25 | | *3/4" Flat Washer | 16 |
| 4 | | *QUIK-ALIGN Eccentric Collar | 4 | 26 | | *3/4"-16 UNF Locknut | 8 |
| 5 | | *1"-14 UNF x 7 1/2" Hex Bolt | 4 | 27 | | *5/8"-11 UNF x 8" Hex Bolt | 8 |
| 6 | | *1" Flat Washer | 8 | 28 | | *5/8" Flat Washer | 16 |
| 7 | | *1"-14 UNF Locknut | 4 | 29 | | *5/8"-11 UNC Locknut | 8 |
| 8 | | U-Beam Assembly, Includes Key Nos. 2, 9-10 | 2 | 30 | 49689-000L | Shim (As Required) | |
| | | • Front | | 31 | | **Transverse Torque Rod Assembly, Includes Bushings, Specify length in mm | 2 |
| | 67249-006 | 34" Frame Width | | a | 67428-XXX | ULTRA ROD with Non-serviceable Bushings | |
| | 67249-014 | 34 5/16" Frame Width | | b | 8240-0000-XXX | TRAAX ROD, <i>Replaces 72000-XXXS</i> | |
| | 67249-016 | 34 1/2" Frame Width | | 32 | 22186-000 | Transverse Torque Rod Frame Bracket | 2 |
| | | • Rear | | 33 | 60593-000L | Axle Stop, Frame Mounted | 4 |
| | 67249-005 | 34" Frame Width | | 34 | 60665-013L | Shock Absorber | 4 |
| | 67249-013 | 34 5/16" Frame Width | | 35 | 67463-002 | Upper Shock Frame Bracket | 4 |
| | 67249-015 | 34 1/2" Frame Width | | | 50754-029 | Single Shock Absorber Fastener Service Kit, Includes Key Nos. 36-41 | |
| 9 | 69565-001 | U-Beam Assembly Enhancement Aftermarket Service Kit, Axle Set, <i>see Page 2 for contents</i> | | 36 | | *3/4"-10 UNC x 4 1/4" Upper Shock Bolt | 4 |
| | 34013-114 | Single D-Pin Bushing Service Kit, Includes Key Nos. 10-13 | | 37 | | *3/4" Flat Washer | 4 |
| 10 | | *D-Pin Bushing | 4 | 38 | | *3/4"-10 UNC Locknut | 4 |
| | 56659-010 | D-Pin Fastener Service Kit, Axle Set Includes Key Nos. 11-13 | | 39 | | *5/8"-11 UNC x 7" Lower Shock Bolt | 4 |
| 11 | | *7/8"-14 UNF x 5" Bolt | 8 | 40 | | *5/8" Flat Washer | 8 |
| 12 | | *7/8" Flat Washer | 16 | 41 | | *5/8"-11 UNC Locknut | 4 |
| 13 | | *7/8"-14 UNF Locknut | 8 | | | Height Control Valve Assembly Service Kit, Includes Key Nos. 42-44 | |
| | | Air Spring Service Kits | | 58525-019 | | Single | |
| | 60961-744 | Single, Upper and lower, Includes Key Nos. 14a, 15-17 | | 58525-024 | | Axle Set | |
| | 49177-033 | Axle Set, Lower, Includes Key Nos. 15-17 | | 42 | 57977-000 | *****Height Control Valve Assembly | |
| 14 | | Air Spring Assembly with Upper Frame Bracket | 4 | 43 | 58994-005L | *****HCV Linkage Assembly | |
| a | 67247-002 | Standard | | 44 | 60921-000 | *****Height Control Valve Linkage Bracket | |
| b | 68056-002 | Tridem 78K Only | | 45 | 64508-XXX | ***S-cam Support Bracket <i>See Part No. on Component</i> | 4 |
| 15 | 60911-002 | Lower Air Spring Mounting Bracket | 4 | | 58821-017 | ***S-cam Service Kit, Axle Set Includes Key Nos. 46-51 | |
| | 49177-006 | Single Lower Air Spring Fasteners Service Kit, Includes Key Nos. 16-17 | | 46 | | *3/8"-16 UNC x 1 1/4" Hex Bolt | 8 |
| 16 | | *1/2" Flat Washer | 4 | 47 | | *3/8" Hardened Washer | 16 |
| 17 | | *1/2"-13 UNC Locknut | 4 | 48 | | *3/8"-16 UNC Locknut | 8 |
| | | U-bolt Service Kit, Includes Key Nos. 18-20 | | 49 | | *5/16" S-Cam U-bolt | 4 |
| | 48718-120 | One Wheel End | | 50 | | *5/16" Hardened Washer | 16 |
| | 48718-117 | Axle Set | | 51 | | *5/16"-18 UNC Locknut | 8 |
| 18 | | *3/4" Square U-bolt | 4 | 52 | 70867-001 | P-80 Lubricant - 10 ml (Not Shown) Per Bushing 1 | |
| a | | 10", Outboard | | | | | |
| b | | 10 1/2", Inboard | | | | | |

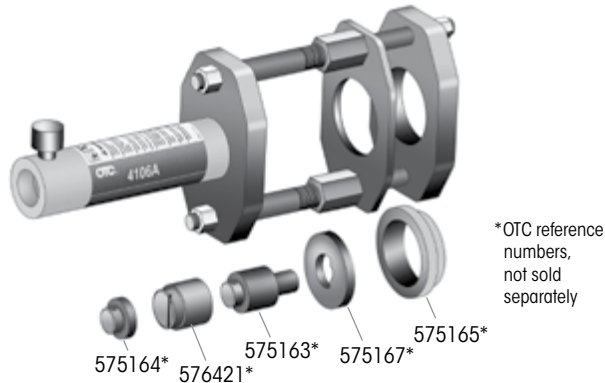


■ Special Tools

D-PIN / QUIK-ALIGN PIVOT BUSHING SERVICE TOOLS

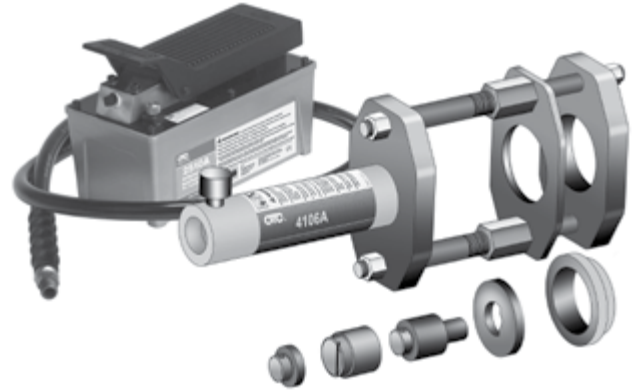
Hendrickson Part No. 66086-202

OTC Part No. 4246 Visit otctools.com



Hendrickson Part No. 66086-204

OTC Part No. 4247 Visit otctools.com



QUIK-ALIGN PIVOT BUSHING SERVICE TOOL

Hendrickson Part No. 66086-203L

Reference Literature No. 59310-061



QUIK-ALIGN SOCKET TOOL

Hendrickson Part No. 66086-200

OTC Part No. 1767

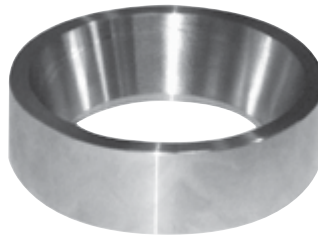
Visit otctools.com



TORQUE ROD BUSHING FUNNEL TOOL

ULTRA ROD PLUS

Hendrickson Part No. 66086-000L



This is a general parts list to provide directional information. Components may vary by model. Questions in regards to parts, contact Hendrickson Truck Parts at 1.866.755.5968 (Toll-free U.S. and Canada), 630.910.2800 (Outside U.S. and Canada) or email: truckparts@hendrickson-intl.com.
Actual product performance may vary depending upon vehicle configuration, operation, service and other factors.
All applications must comply with applicable Hendrickson specifications and must be approved by the respective vehicle manufacturer with the vehicle in its original, as-built configuration.
Contact Hendrickson for additional details regarding specifications, applications, capacities, and operation, service and maintenance instructions.

Call Hendrickson at **1.866.755.5968** (toll-free) or **1.630.910.2800** for additional information.



www.hendrickson-intl.com

TRUCK COMMERCIAL VEHICLE SYSTEMS
800 South Frontage Road
Woodridge, IL 60517-4904 USA
1.866.755.5968 (Toll-free U.S. and Canada)
1.630.910.2800 (Outside U.S. and Canada)
Fax 1.630.910.2899

SP-230 Rev B 03-21

© 2021-2017 Hendrickson USA, L.L.C. All Rights Reserved. All trademarks shown are owned by Hendrickson USA, L.L.C., or one of the affiliates, in one or more countries.
Information contained in this literature was accurate at the time of publication. Product changes may have been made after the copyright date that are not reflected.

Printed in United States of America