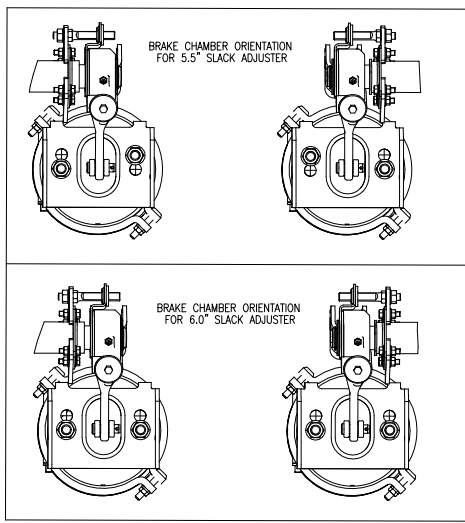
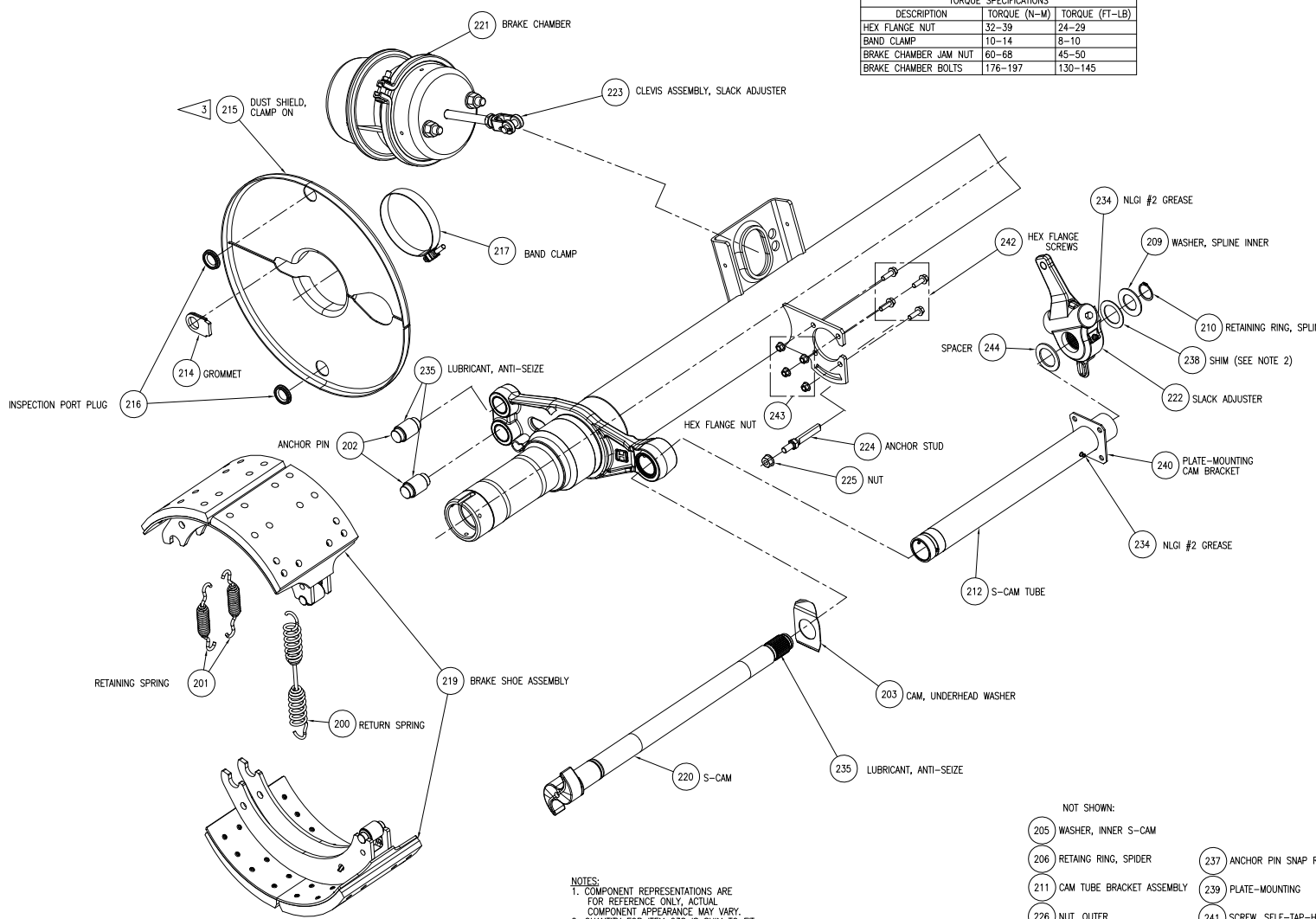
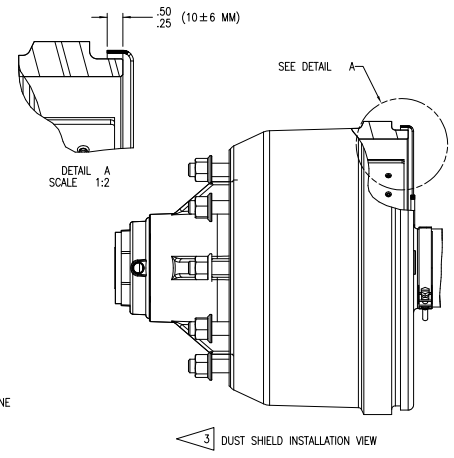


15	16
ITEM	DESCRIPTION
200-299	BRAKE COMPONENTS
	DRAWING
	B-30034

TORQUE SPECIFICATIONS		
DESCRIPTION	TORQUE (N-M)	TORQUE (FT-LB)
HEX FLANGE NUT	32-39	24-29
BAND CLAMP	10-14	8-10
BRAKE CHAMBER JAM NUT	60-68	45-50
BRAKE CHAMBER BOLTS	176-197	130-145



- NOT SHOWN:
- 205 WASHER, INNER S-CAM
 - 206 RETAINING RING, SPIDER
 - 211 CAM TUBE BRACKET ASSEMBLY
 - 226 NUT, OUTER
 - 227 SLEEVE, INNER
 - 236 ANCHOR PIN SPACER
 - 237 ANCHOR PIN SNAP RING
 - 239 PLATE-MOUNTING
 - 241 SCREW, SELF-TAP-HEX
 - 245 SNAP RING
 - 246 CAM TUBE DECAL

- NOTES:
- COMPONENT REPRESENTATIONS ARE FOR REFERENCE ONLY. ACTUAL COMPONENT APPEARANCE MAY VARY.
 - QUANTITY FOR ITEM 238 IS SHIM TO FIT, MINIMUM (1) SHIM PER S-CAM.
 - DUST SHIELD INSTALLATION INSTRUCTIONS:
 - OVERLAP EDGE OF SHIELD TO BRAKE DRUM PER DETAIL A.
 - SHIELD HALVES MAY BE HELD TOGETHER WITH A MAGNET DURING INSTALLATION.
 - CLAMP BAND SHOULD BE LOCATED .060" (1.5 MM) FROM EDGE OF DUST SHIELD.
 - CLAMP SHOWN IN PREFERRED POSITION BUT OTHER POSITIONS ARE ACCEPTABLE.
 - TORQUE CLAMP TO: 90-125 IN LB (10-14 N M).
 - MAKE SURE GROMMETS ARE SECURELY ATTACHED.
 - REFER TO DOCUMENT R-HSDS FOR MODEL DOCUMENTATION.
 - REFER TO DOCUMENT B-32596 FOR AFTERMARKET PARTS LIST.

This print remains the property of Hendrickson. All information contained herein is confidential. It is loaned, subject to return on demand, and on the express condition that it is not to be copied or used directly or indirectly for any purpose other than the purpose for which it has been loaned to you.

 TRAILER COMMERCIAL VEHICLE SYSTEMS	UNLESS OTHERWISE NOTED: DIMENSIONS ARE IN INCHES TOLERANCES ARE: .0005 ± .0005 .001 ± .001 .002 ± .002 .005 ± .005 .010 ± .010 .015 ± .015 .030 ± .030 .060 ± .060 .125 ± .125 .250 ± .250 .500 ± .500 1.000 ± 1.000 1.500 ± 1.500 2.000 ± 2.000 3.000 ± 3.000 4.000 ± 4.000 5.000 ± 5.000 6.000 ± 6.000 8.000 ± 8.000 10.000 ± 10.000 15.000 ± 15.000 20.000 ± 20.000 25.000 ± 25.000 30.000 ± 30.000 40.000 ± 40.000 50.000 ± 50.000 60.000 ± 60.000 80.000 ± 80.000 100.000 ± 100.000 DIMENSIONS REFER TO UNLESS OTHERWISE NOTED	DRAWN BY: M. GEZO CHECKED BY: C. ANDERSON APPROVED BY: M. OYSTER	DATE: B-29-11 SHEET: 1 OF 1 DRAWING NUMBER: D-32593
	HSDS BRAKE COMPONENTS		SIZE: 1:4 SHEET: 1 OF 1 DRAWING NUMBER: D-32593