

# **H** PARTS LIST

## STEERTEK™ NXT High Capacity Steer Axle System for Autocar® Vehicles

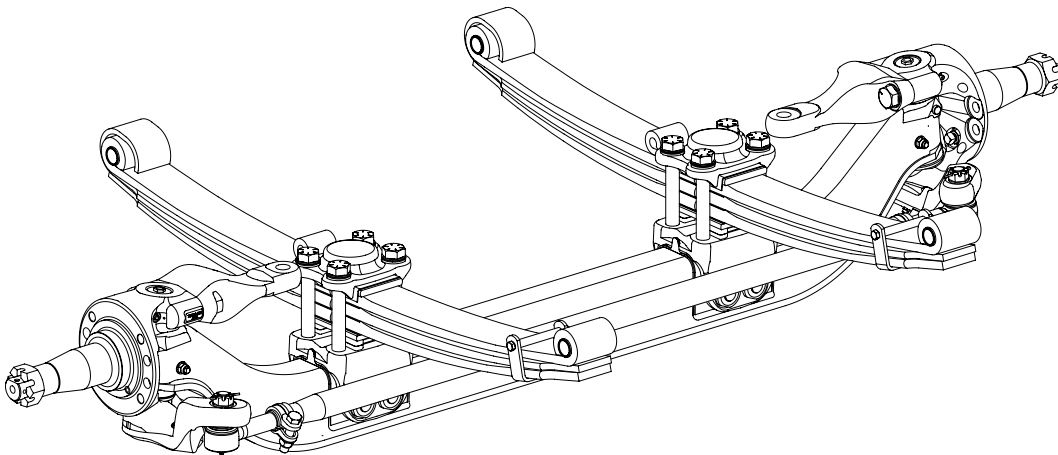
LIT NO: SP-297

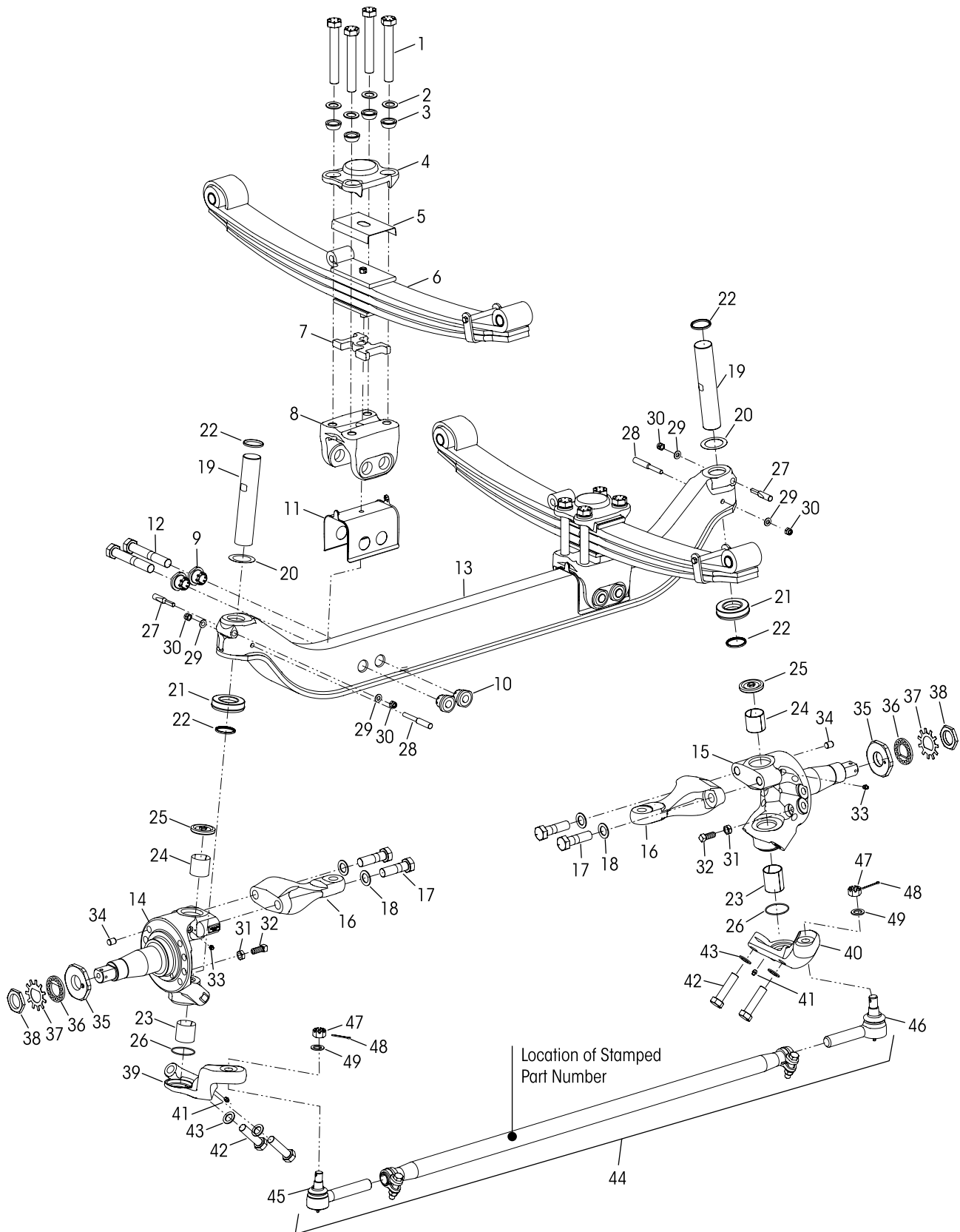
DATE: August 2020

REVISION: B

### CONTENTS

DESCRIPTION	PAGE
Parts List . . . . .	2
Selection Guides . . . . .	4-5
Special Tools . . . . .	6







# STEERTEK™ NXT High Capacity Axle for Autocar® Vehicles

KEY NO.	PART NO.	DESCRIPTION	VEHICLE QTY.	KEY NO.	PART NO.	DESCRIPTION	VEHICLE QTY.
		Clamp Group Assembly, Includes Key Nos. 1-12 <i>See Table 1 on Page 4</i>	2	21	75918-001	Thrust Bearing	2
	93061-XXX	ACX-XPEDITOR Vehicles, <i>Replaces 79272-XXX</i>		22	75966-001	Kingpin Seal	4
	79815-XXX	Legend Vehicles				Kingpin Bushing	
	34013-XXX	<b>Clamp Group Fasteners Service Kit, One Side</b> Includes Key Nos. 1-3, 5, <i>See Table 1 on Page 4</i>		23	75919-001	Lower - 2½" Length	2
1	64107-XXX	1"-8 UNC Hex Bolt, <i>See Table 1 on Page 4</i>	8	24	75919-002	Upper - 2" Length	2
2	22962-051	1" Flat Washer (if equipped) <i>See Table 1 on Page 4</i>		25	77209-001	Grease Cap	2
3	78356-002	1" Spherical Washer	8	26	68303-004	O-ring	2
4	78888-000	Top Pad with Jounce Stop	2			Kingpin Draw Key	
5	79273-001	Spring Liner	2	27	75925-001	Upper - 3¾" Length	2
6		Leaf Spring Assembly with Bushings, <i>See Table 1 on Page 4</i>	2	28	75925-002	Lower - 4¾" Length	2
		ACX-XPEDITOR Vehicles, <i>Replaces 53816-100</i>	2	29	22962-054	7/16" Flat Washer	4
		Legend Vehicles		30	17700-008	7/16"-14 UNC-2B Nut	4
7		Spring Spacer, <i>See Table 1 on Page 4</i>	2	31	17491-023	5/8"-11 UNC-2B Jam Nut	2
8	77232-000	Axle Seat	2	32	80183-000	5/8"-11 UNC x 1½" Set Screw	2
	34013-229	<b>Axle Clamp Service Kit, One Side</b> Includes Key Nos. 9-12		33	33117-000	Grease Zerk	2
		Axle Clamp		34	64246-000	ABS Sensor Sleeve	2
9		*Non Threaded	4	35	79367-000	Spindle Locknut	2
10		*Threaded	4	36	79368-000	Spindle Lock Washer	2
11	78887-001	Axle Seat Liner	2	37	79369-000	Spindle Washer	2
12		*1"-8 UNC x 6½" Hex Cap Bolt	4	38	79370-000	Spindle Nut	2
		STEERTEK NXT High Capacity Axle Assembly, Includes Key Nos. 13-49, <i>See Table 2 on Page 5</i>	1		60961-893	<b>**Aftermarket Tie Rod Arm and Tie Rod Assembly Fastener Service Kit</b> , Includes Key Nos. 26, 42-43, 48, <i>See Page 5</i>	
	77360-XXX	ACX-XPEDITOR Vehicles			77244-XXX	<b>***Tie Rod Arm Assembly</b> , Includes Key No. 41, <i>See Table 2 on Page 5</i>	
	79816-XXX	Legend Vehicles		39		Left Hand	1
13		Axle	1	40		Right Hand	1
	77284-006	ACX-XPEDITOR Vehicles		41	33117-000	Grease Zerk	2
	77284-007	Legend Vehicles		42	30418-014	7/8"-14 UNF x 3½" Hex Bolt	4
		Knuckle Assembly, Includes Key Nos. 22, 25, 31-34		43	22962-002	7/8" Flat Washer	4
14	77243-001	Left Hand	1	44	80721-XXX	<b>**Tie Rod Assembly, Straight</b> , Includes Key Nos. 44-46, <i>Replaces 76879-XXX</i> , <i>See Table 2 on Page 5</i>	1
15	77243-002	Right Hand	1		60961-890	<b>**Tie Rod End Service Kits, Straight</b> Axle Set, Includes Kit Nos. 60961-888 and -889	
16		Steering Arm, <i>See Table 2 on Page 5</i>	2		60961-889	Left Hand, Includes Key Nos. 44, 47-48	
17	30550-027	1"-14 UNF x 3½" Hex Bolt	4		60961-888	Right Hand, Includes Key Nos. 45, 47-48	
18	22962-051	1" Flat Washer	4			Tie Rod End, Includes Key No. 46	
	34013-230	<b>Kingpin Service Kit, One Side</b> Includes Key Nos. 18-29, 41-42		45	80745-001	Left Hand, <i>Replaces 76876-001</i>	1
19	75923-001	Kingpin	2	46	80745-002	Right Hand, <i>Replaces 76876-002</i>	1
20		Kingpin Shim (As needed for service)		47		*7/8" Castle Nut	2
	77241-002	0.01" Thickness	2	48	17800-004	Cotter Pin	2
	77241-003	0.02" Thickness	2	49	22962-002	7/8" Flat Washer	2

**NOTES:** \* Item included in kit/assembly only, part not sold separately.

\*\* Effective January 1, 2020, the new robust Straight Tie Rod Assembly 80721-XXX (Key No. 44) replaces 76879-XXX assembly and requires the replacement with the modified tie rod arms (Key No. 39 and 40). To verify which tie rod assembly is equipped on the vehicle, locate the part number on the tie rod tube (refer to the parts exploded view).

\*\*\* If one tie rod arm requires replacement, both tie rod arms must be replaced with the new modified tie rod arms. The new tie rod arms configures to the new tie rod assembly 80721-XXX and will no longer accept the previous 76879-XXX tie rod assembly.

Refer any questions to Hendrickson Truck Parts at truckparts@hendrickson-intl.com or Tech Services at techservices@hendrickson-intl.com.



■ Selection Guide

TABLE 1 Leaf Spring Assembly and Components

Model	Ride Height	Leaf Spring & Clamp Group Assembly	Leaf Spring Offset	Clamp Group Service Kit	Leaf Spring Assembly	Spring Spacer	1" Hex Bolt		1" Flat Washer (Use only as specified)
					Key No. 6	Key No. 7	Key No. 1		Key No. 2
					Part Number	Part Number	Length	Part Number	Part Number
ACX-XPEDITOR 20K	9.5"	93061-001 93061-002		34013-418	82720-100 82720-200	77458-001	7"	64107-002	---
LEGEND 20K	11"	79815-001	4"	34013-256	82342-000	79814-000	9"	64107-003	22962-051
	10"	79815-002		34013-419	82342-000	79814-000	8"	64107-001	
	9"	79815-003		34013-228	82342-000	---	7"	64107-002	
	11"	79815-201	34013-256	82544-000	79814-000	9½"	64107-007		
	10"	79815-202	34013-420	82544-000	79814-000	8½"	64107-006		
	9"	79815-203	34013-228	82544-000	---	7½"	64107-000		
LEGEND 18K	11"	79815-101	3¾"	34013-256	82364-000	79814-000	9"	64107-003	22962-051
	10"	79815-102		34013-419	82364-000	79814-000	8"	64107-001	
	9"	79815-103		34013-228	82364-000	---	7"	64107-002	
	11.3"	79815-301	34013-256	82365-000	79814-000	9½"	64107-007		
	10.3"	79815-302	34013-420	82365-000	79814-000	8½"	64107-006		
	9.3"	79815-303	34013-228	82365-000	---	7½"	64107-000		



**WARNING**

USE 1" FLAT WASHERS (PART NO. 22962-051) ONLY AS SPECIFIED IN TABLE 1 ABOVE (LEAF SPRING AND CLAMP GROUP ASSEMBLY). TABLE 1 LISTS DIFFERENT CONFIGURATIONS FOR THIS ASSEMBLY. IN CERTAIN CONFIGURATIONS, THE CLAMP GROUP REQUIRES THE USE OF 1" FLAT WASHERS (PART NO. 22962-051) WITH THE SPECIFIED 1" HEX BOLT LENGTH, BUT NOT IN OTHER CONFIGURATIONS. IMPROPER CLAMP FORCE IN THE LEAF SPRING AND CLAMP GROUP ASSEMBLY, IMPROPER SEATING, AND COMPONENT DAMAGE CAN CAUSE LOSS OF VEHICLE CONTROL, ADVERSE VEHICLE HANDLING, PROPERTY DAMAGE, AND PERSONAL INJURY.



■ Selection Guide

TABLE 2 Axle Assembly • Steering Arm • Tie Rod Arm • Tie Rod Assembly

Model	Wheel Base	STEERTEK NXT High Capacity Axle Assembly	Steering Arm Key No. 16	***Tie Rod Arm Assembly		**20K Straight Tie Rod Assembly Key No. 44	**Tie Rod Arm and Tie Rod Assembly Fastener Service Kit
				Left Hand Key No. 39	Right Hand Key No. 40		
ACX-XPEDITOR	> 200"	77360-001	77337-001	77244-001	77244-002	80721-001	60961-893
		77360-002		77244-003	77244-004	80721-002	
		77360-003		77244-005	77244-006	80721-003	
		77360-004		77244-007	77244-008	80721-002	
		77360-005		77244-009	77244-010	80721-003	
		77360-006		77244-011	77244-012	80721-003	
LEGEND	225"	79816-001	77337-006	77244-029	77244-030	80721-003	60961-893
	250"	79816-002		77244-005	77244-006		
	282"	79816-003		77244-025	77244-026		
	225"	79816-004	77337-007	77244-029	77244-030		
	250"	79816-005		77244-005	77244-006		
	282"	79816-006		77244-025	77244-026		
	225"	79816-007	77337-006	77244-023	77244-024		
	250"	79816-008		77244-011	77244-012		
	282"	79816-009		77244-027	77244-028		
	225"	79816-010	77337-007	77244-023	77244-024		
	250"	79816-011		77244-011	77244-012		
	282"	79816-012		77244-027	77244-028		
	225"	79816-013	79685-002	77244-029	77244-030		
	250"	79816-014		77244-005	77244-006		
	282"	79816-015		77244-025	77244-026		
	225"	79816-016		77244-023	77244-024		
	250"	79816-017		77244-011	77244-012		
	282"	79816-018		77244-027	77244-028		

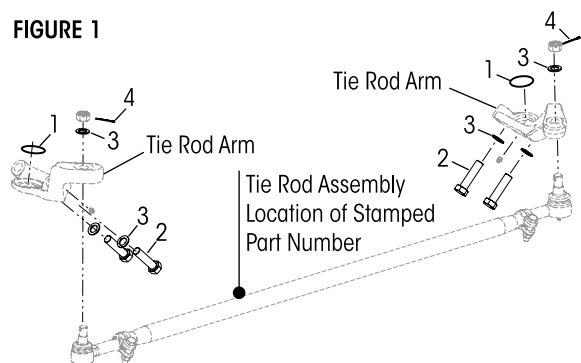
Aftermarket Tie Rod Arm and Straight Tie Rod Assembly Fastener Service Kit

Needed to Complete Conversion to 80721-XXX Tie Rod Assembly and Revised Tie Rod Arm

KEY NO.	PART NO.	DESCRIPTION	VEHICLE QTY.
	60961-893	Aftermarket Straight Tie Rod Arm and Tie Rod Assembly Fastener Service Kit, Includes Key Nos. 1-4	
1	68303-004	O-ring	2
2	30418-014	7/8"-1.4 UNF x 3 1/2" Hex Bolt	4
3	22962-002	7/8" Flat Washer	6
4	17800-004	Cotter Pin	2

**NOTE:** Locate the tie rod assembly number on the tie rod tube as shown in Figure 1 to verify if equipped with Part No. 76879-XXX. If so, then a new tie rod assembly (Part No. 80721-XXX) and both left and right updated tie rod arms require replacement. See Table 2 to order applicable tie rod arms, tie rod assembly, and this Fastener Service Kit to complete the conversion.

FIGURE 1





## ■ Special Tools

**KINGPIN BUSHING TOOL**

**ADJUSTABLE STRAIGHT FLUTE REAMER**

The dimension of cutting diameter must facilitate a range of **2.00"-2.01"**



This is a general parts list to provide directional information. Components may vary by model. Questions in regards to parts, contact Hendrickson Truck Parts at 1.866.755.5968 (Toll-free U.S. and Canada), 630.910.2800 (Outside U.S. and Canada) or e-mail: [truckparts@hendrickson-intl.com](mailto:truckparts@hendrickson-intl.com).

Actual product performance may vary depending upon vehicle configuration, operation, service and other factors.

All applications must comply with applicable Hendrickson specifications and must be approved by the respective vehicle manufacturer with the vehicle in its original, as-built configuration.

Contact Hendrickson for additional details regarding specifications, applications, capacities, and operation, service and maintenance instructions.

**Call Hendrickson at 1.866.755.5968 (toll-free) or 1.630.910.2800 for additional information.**



[www.hendrickson-intl.com](http://www.hendrickson-intl.com)

### TRUCK COMMERCIAL VEHICLE SYSTEMS

800 South Frontage Road  
Woodridge, IL 60517-4904 USA  
1.866.755.5968 (Toll-free U.S. and Canada)  
1.630.910.2800 (Outside U.S. and Canada)  
Fax 1.630.910.2899

SP-297 Rev B 08-20

© 2017-2020 Hendrickson USA, L.L.C. All Rights Reserved. All trademarks shown are owned by Hendrickson USA, L.L.C., or one of the affiliates, in one or more countries.

Information contained in this literature was accurate at the time of publication. Product changes may have been made after the copyright date that are not reflected.

Printed in United States of America