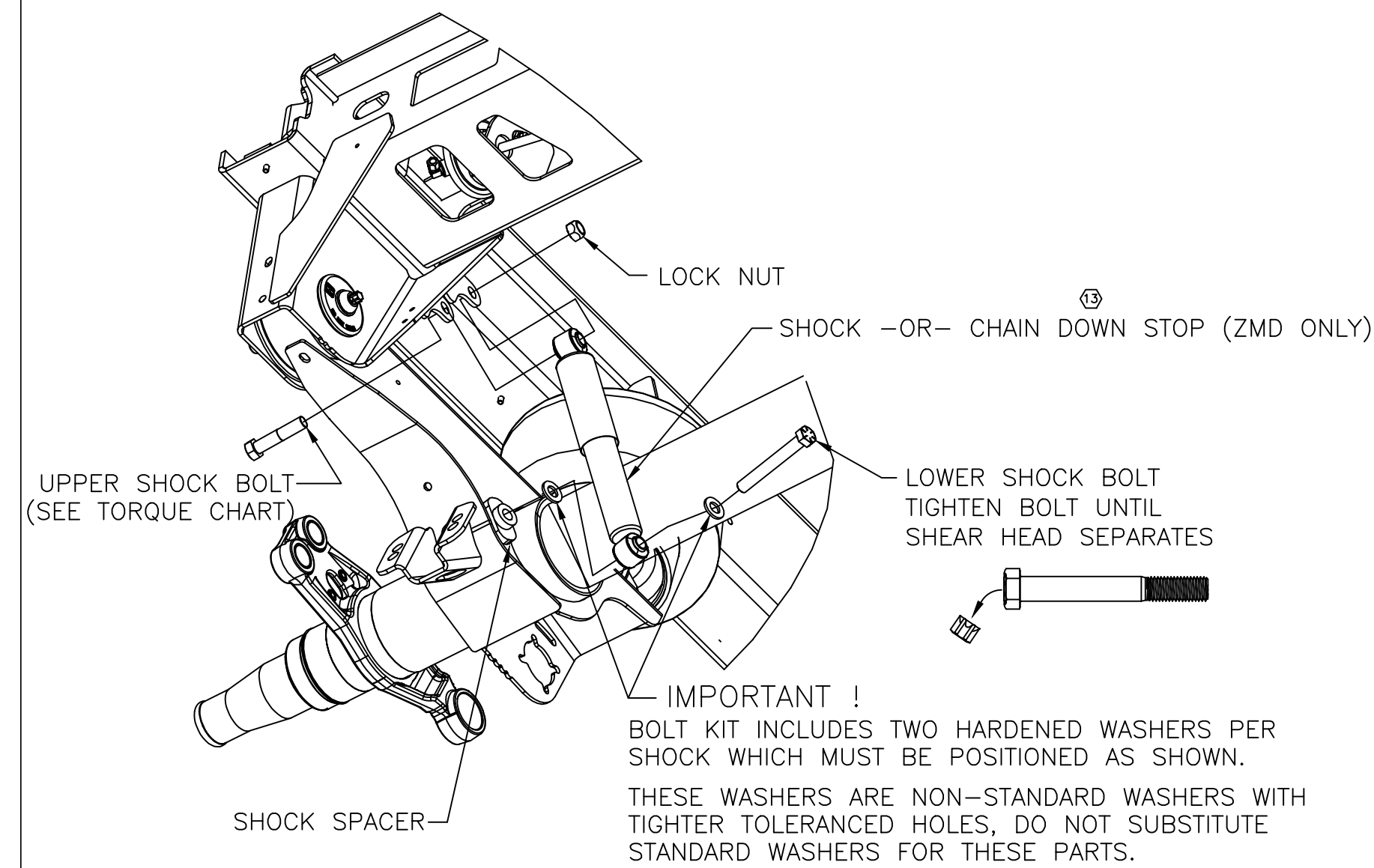


SHOCK INSTALLATION

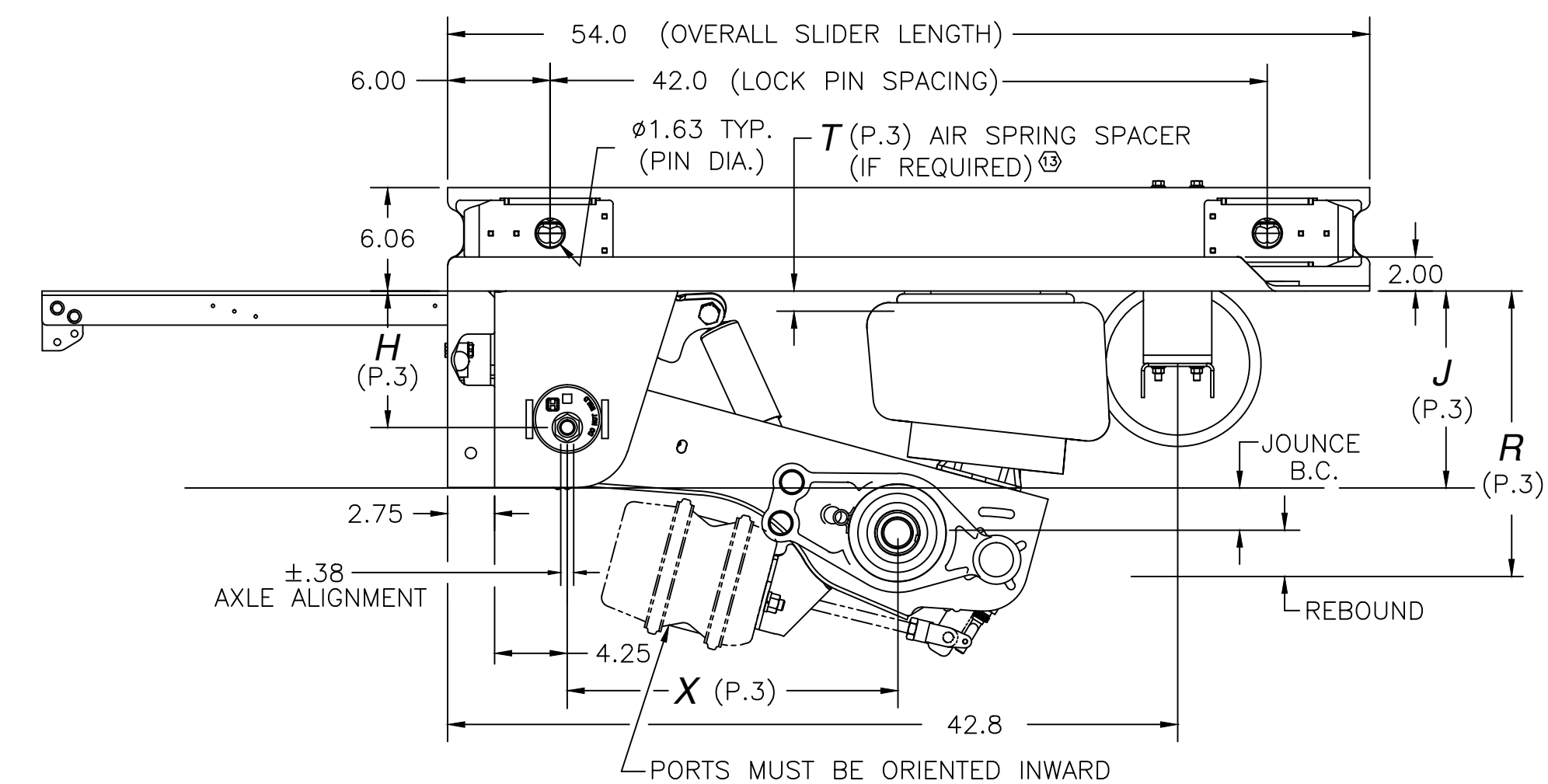
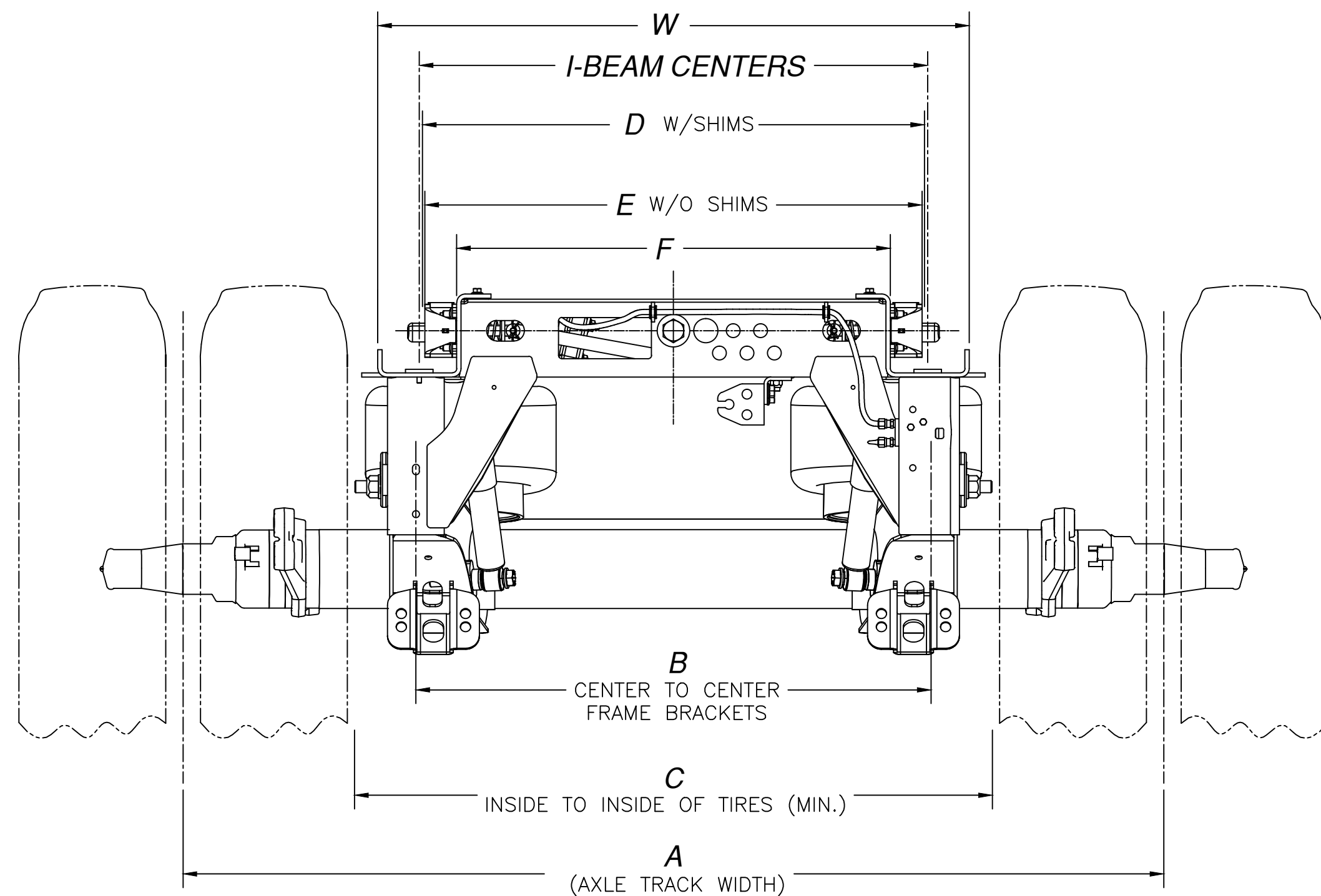
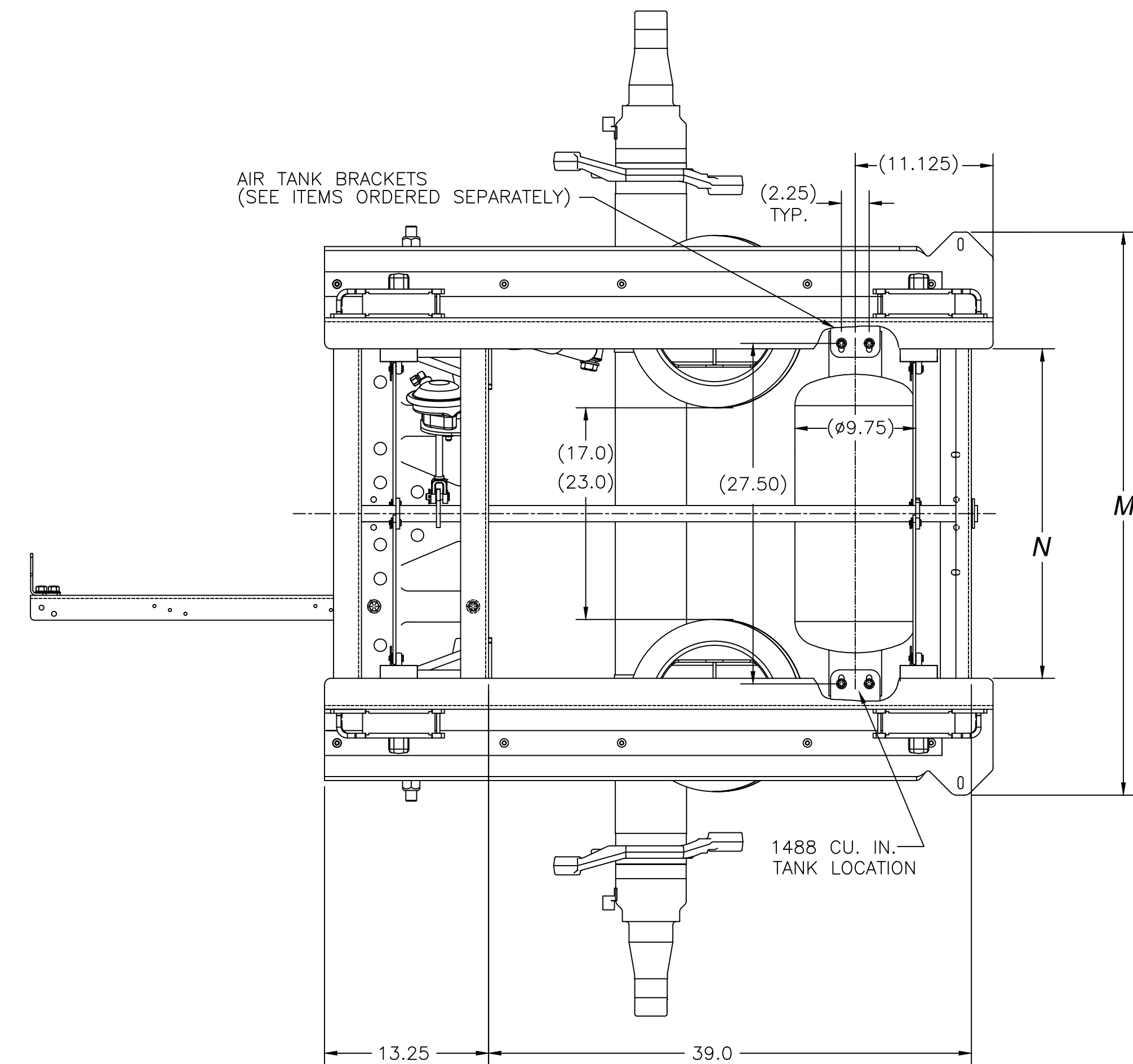


ITEMS ORDERED SEPARATELY, SHIPPED LOOSE

1. **SPRAY GUARD MOUNTING ANGLE KIT:**
 P/N S-22428-2 (37" & 38" I-BEAM CENTERS)
 P/N S-22428-8 (43" & 44" I-BEAM CENTERS)
2. **AIR TANK MOUNTING BRACKET KITS: (SEE PAGE 2)**
 P/N S-27011-1 2800 CU. IN. TANK, (37" & 38" I-BEAM CENTERS)
 P/N S-27011-2 2800 CU. IN. TANK, (43" & 44" I-BEAM CENTERS)
 P/N S-27011-3 1488 CU. IN. TANK, (37" & 38" I-BEAM CENTERS)
 P/N S-27011-4 1488 CU. IN. TANK, (43" & 44" I-BEAM CENTERS)
3. **STINGER:**
 S-27028-1 23.75 INCH (SHOWN PAGE 2)
4. **SLIDER LOCATING BAR:**
 LOCATING BAR NOT AVAILABLE FROM HENDRICKSON

- NOTES:**
1. SEE L-341 INTRAAX® INSTALLATION INSTRUCTIONS FOR INFORMATION ON ASSEMBLY, WELDING PROCEDURE, AND ALIGNMENT.
 2. SEE SERVICE MANUAL FOR INFORMATION CONCERNING MAINTENANCE PROCEDURE.
 3. SEE L-1182 FOR HEIGHT CONTROL KIT OPTIONS.
 4. DO NOT WELD ON AXLE TUBE.
 5. DO NOT WELD ON SLIDER BOX.
 6. IT IS THE RESPONSIBILITY OF THE INSTALLER TO ENSURE PROPER VEHICLE FRAME DESIGN IN THE AREA OF SLIDER ATTACHMENT.
 7. SEE AKSS001 FOR HENDRICKSON RECOMMENDED PLUMBING PROCEDURE.

- CLEARANCE SPECIFICATIONS:**
- a) 1.0 INCH MINIMUM CLEARANCE REQUIRED BETWEEN TOP OF TIRE AND BOTTOM OF TRAILER STRUCTURE WHEN AXLE IS AT FULL JOUNCE.
 - b) 2.0 INCHES MINIMUM CLEARANCE REQUIRED BETWEEN INSIDE OF TIRE AND TRAILER STRUCTURE FOR TIRE AND LATERAL MOVEMENT.
 - c) .75 INCH MINIMUM CLEARANCE MUST BE MAINTAINED AROUND AIR SPRING WHEN IT IS AT MAXIMUM DIAMETER.



I-BEAM CENTERS	SLIDER/ SUSPENSION WIDTH DIMENSIONS (INCHES)								
	A	B	C	D	E	F	M	N	W
37"	71.5	37.5	46.50	36.61	36.25	31.63	45.50	26.63	43.13
38"	71.5	37.5	46.50	37.61	37.25	32.63	46.50	27.63	44.13
43"	77.5	43.5	52.50	42.61	42.25	37.63	51.50	32.63	49.13
44"	77.5	43.5	52.50	43.61	43.25	38.63	52.50	33.63	50.13

NOTE:
 THE INSTALLATION OF THE SINGLE AXLE AAZNT SLIDER DOES NOT CONTRIBUTE TO RESISTING LATERAL BENDING OR PARALLELOGRAMING OF THE TRAILER FRAME. A WIDESPREAD SUSPENSION CAN INDUCE THESE FORCES. THIS ACTION NEEDS TO BE CONSIDERED IN THE DESIGN OF THE TRAILER AND/OR INSTALLATION OF THE ADJACENT SUSPENSION. HENDRICKSON ENGINEERING IS AVAILABLE FOR ASSISTANCE UPON REQUEST.

This Print remains the property of Hendrickson. All information contained thereon is confidential. It is loaned, subject to return on demand and on express condition that it is not to be copied or used directly or indirectly for any purpose other than the purpose for which it has been loaned to you.

<p>HENDRICKSON TRAILER COMMERCIAL VEHICLE SYSTEMS 2070 INDUSTRIAL PLACE S.E., CANTON, OH 44707-2600 U.S.A.</p>	UNLESS OTHERWISE NOTED: TOLERANCES ARE: .X: ± .1 .XX: ± .06 .XXX: ± .030 ANGULAR: ± 0.5° DIMENSIONS ADHERE TO ANSI Y14.5M-1982	DIMENSIONS ARE: INCHES: 12 32211 J.E.W 02-08-19 11 24103 J.E.W 03-25-15 10 19695 CDR 5-18-11	13 34089 JMD 08-19-20 12 32211 J.E.W 02-08-19 11 24103 J.E.W 03-25-15 10 19695 CDR 5-18-11	DRAWN BY: C. ANDERSON CHG'D BY: 2-20-04 K. GALIGHER APP'D BY: T. HESS	2-20-04 THIS DRAWING IS THE CONFIDENTIAL PROPERTY OF HENDRICKSON	*DWG PART NUMBER REVISION MUST MATCH REVISION OF DOCUMENT SCALE: 1:125=1.000 DRAWING NO.:	P PRODUCTION D 1 OF 3 D-27452
--	--	--	---	---	---	---	---

PIN CAGE PLACEMENT

NOTE:

1. PIN CAGES HAVE A THICK SPACER PLATE AND A THIN SPACER PLATE:

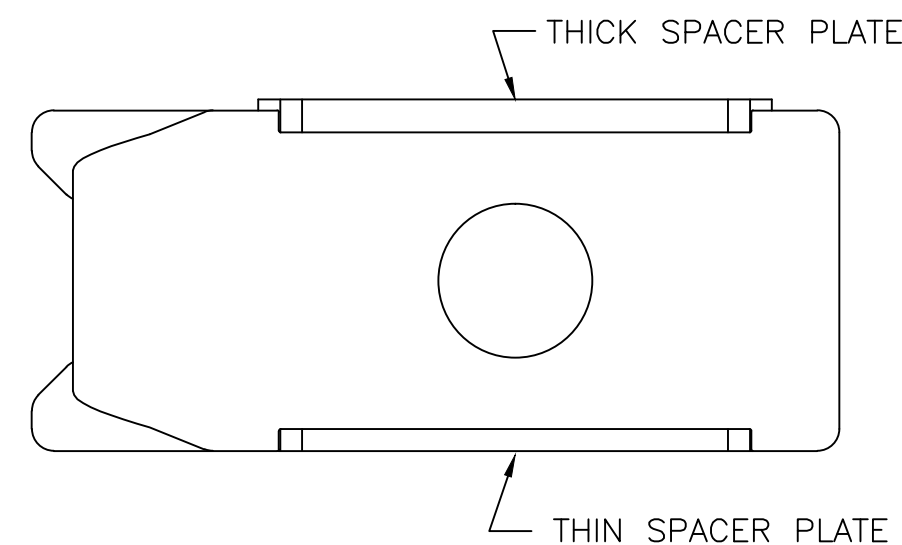
THE THICK SPACER PLATE MUST BE DOWN WHEN BOTTOM FLANGE OF TRAILER I-BEAM IS .500 THK. OR LESS.

THE THIN SPACER PLATE MUST BE DOWN WHEN BOTTOM FLANGE OF TRAILER I-BEAM IS GREATER THAN .500 THK. BUT DOES NOT EXCEED .750 THK.

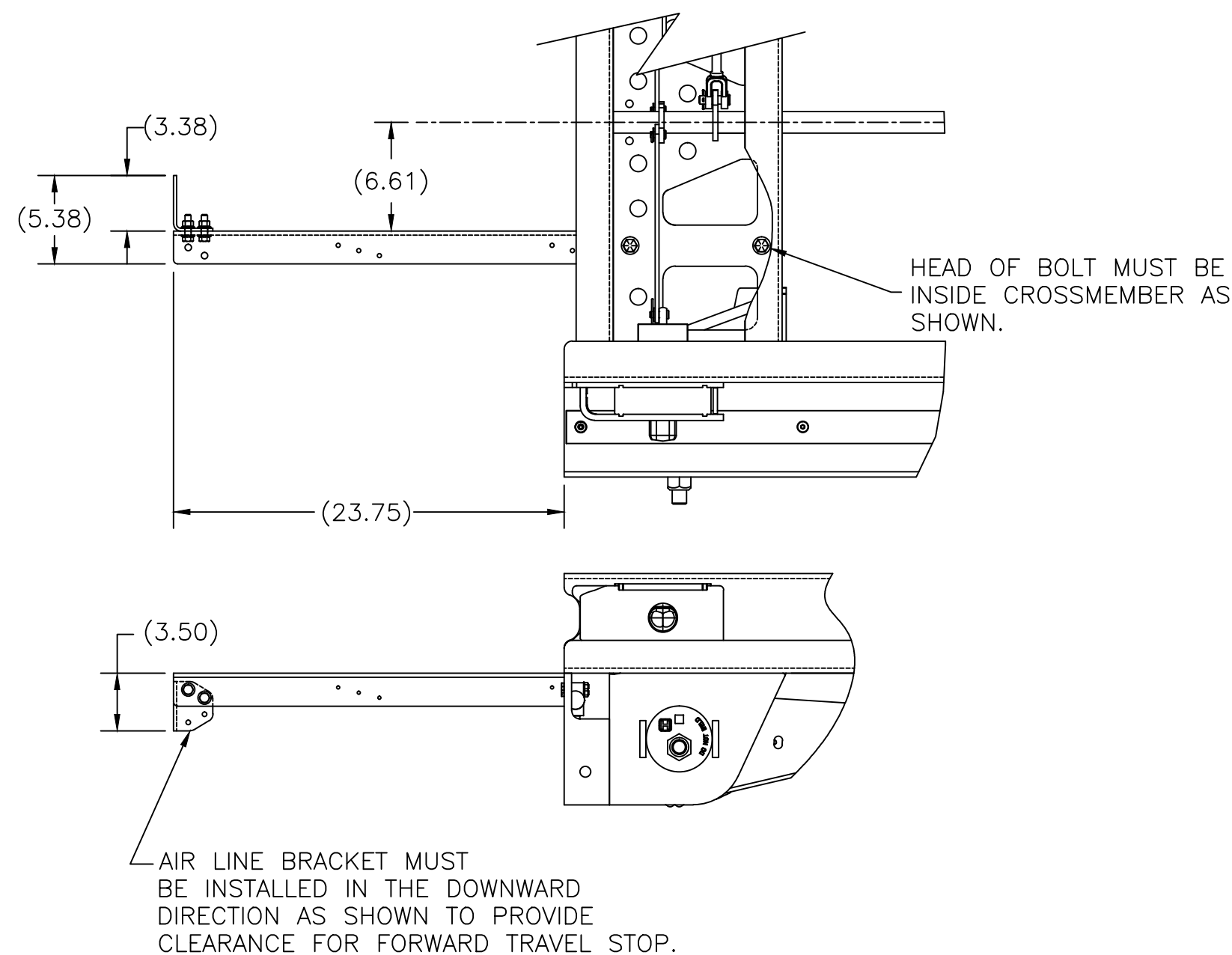
2. IF NEEDED AND PIN CAGES NEED FLIPPED.

WHEN GOING FROM ONE THICKNESS TO THE OTHER, THE FRONT PIN CAGE IS FLIP AND MOVED TO THE REAR PIN CAGE LOCATION.

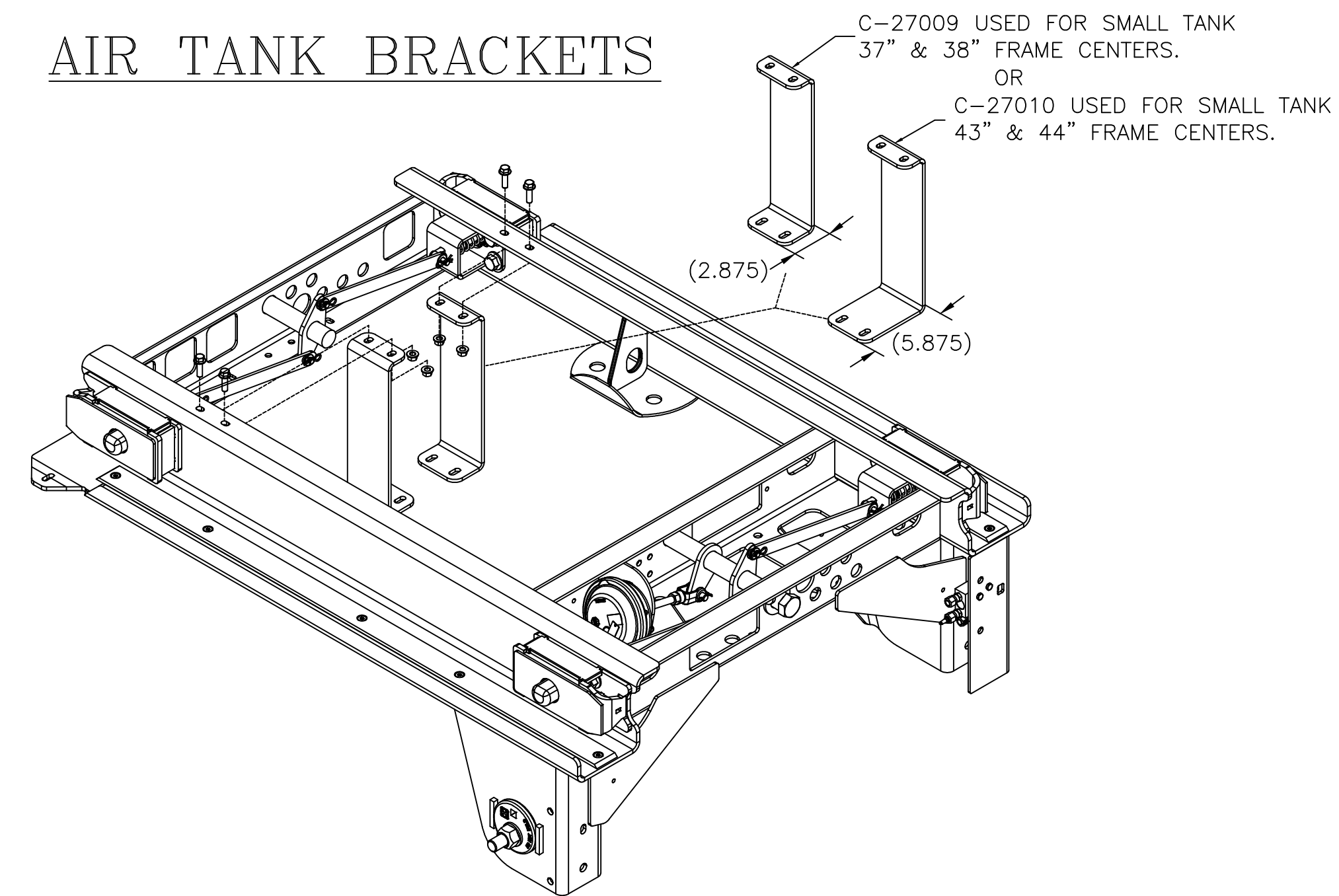
THE REAR PIN CAGE IS FLIPPED AND MOVED TO THE FRONT PIN CAGE LOCATION.



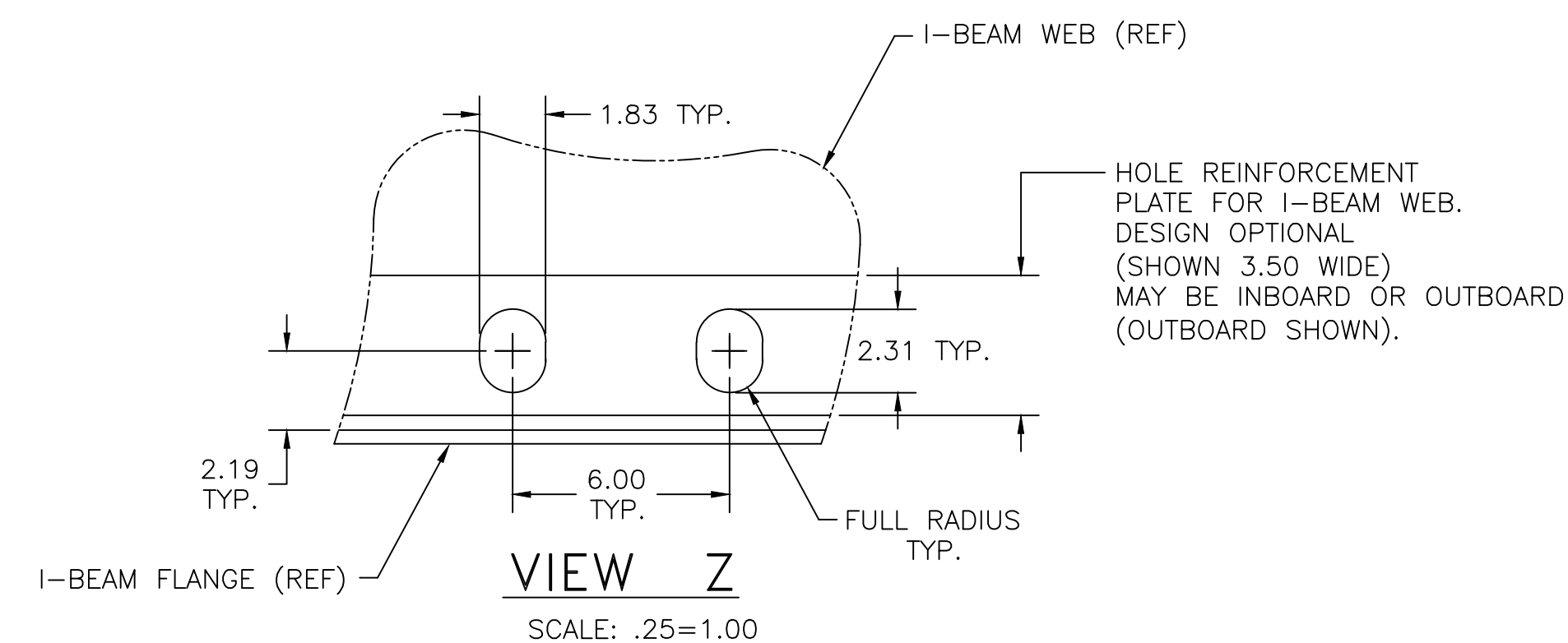
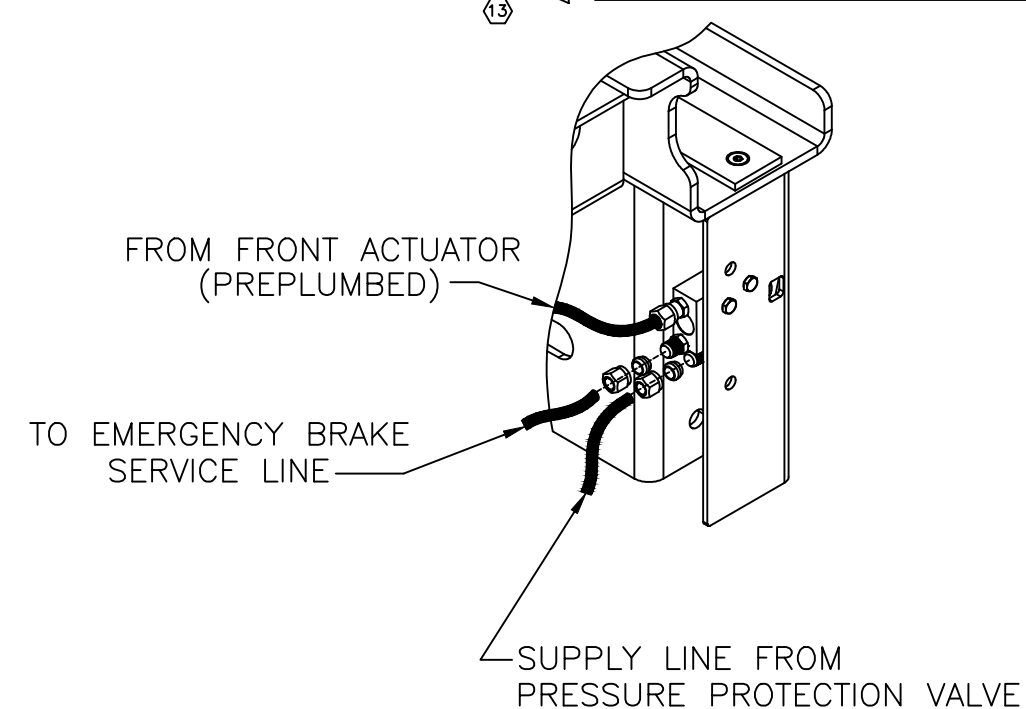
STINGER INSTALLATION



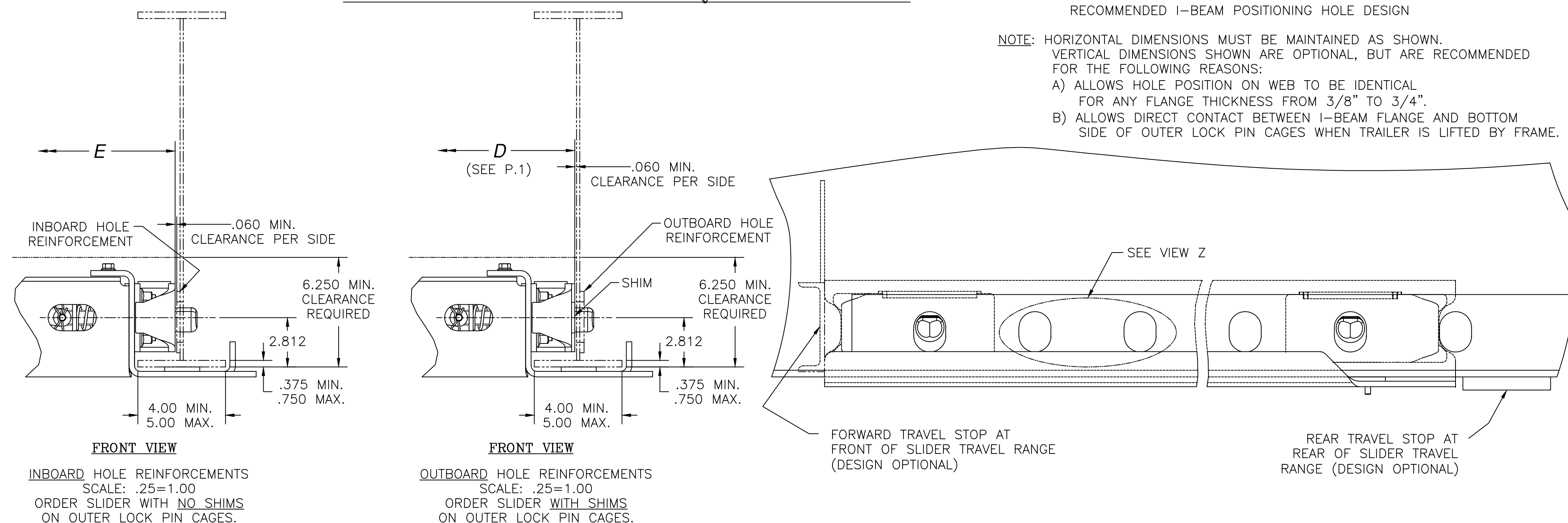
AIR TANK BRACKETS



PLUMBING DETAIL



TRAILER FRAME REQUIREMENTS



RECOMMENDED I-BEAM POSITIONING HOLE DESIGN

NOTE: HORIZONTAL DIMENSIONS MUST BE MAINTAINED AS SHOWN. VERTICAL DIMENSIONS SHOWN ARE OPTIONAL, BUT ARE RECOMMENDED FOR THE FOLLOWING REASONS:

A) ALLOWS HOLE POSITION ON WEB TO BE IDENTICAL FOR ANY FLANGE THICKNESS FROM 3/8" TO 3/4".

B) ALLOWS DIRECT CONTACT BETWEEN I-BEAM FLANGE AND BOTTOM SIDE OF OUTER LOCK PIN CAGES WHEN TRAILER IS LIFTED BY FRAME.

This Print remains the property of Hendrickson. All information contained thereon is confidential. It is loaned, subject to return on demand and on express condition that it is not to be copied or used directly or indirectly for any purpose other than the purpose for which it has been loaned to you.

13

HENDRICKSON

TRAILER COMMERCIAL VEHICLE SYSTEMS
2070 INDUSTRIAL PLACE S.E., CANTON, OH 44707-2600 U.S.A.

UNLESS OTHERWISE NOTED, TOLERANCES ARE:	1.3	34089	JMD	08-19-20	DRAWN BY	C. ANDERSON	2-20-04
DIMENSIONS ARE:	12	32211	JLW	02-08-19	CHKD BY	2-20-04 K. GALIGHER	
INCHES:	11	24103	JLW	03-25-15	APPD BY	T. HESS	
MM:	10	19695	CDR	5-18-11			
ANGULAR:							
± 0.5°							
3RD ANGLE PROJECTION							
DIMENSIONS ADHERE TO ANSI Y14.5M-1982	REV.	ECN NO.	BY	DATE			

THIS DRAWING IS THE CONFIDENTIAL PROPERTY OF HENDRICKSON

AAZNT INSTALLATION DRAWING
SINGLE SLIDER

PART NO.	REV	PRODUCTION
DWG D-27452	13	
SCALE	SIZE	PAGE
.125=1.000	D	2 OF 3
DRAWING NO.		
D-27452		

**** OPTION WEIGHT ADDITION (LB)		
OPTIONAL COMPONENT	I-BEAM CENTERS	
	37" & 38"	43" & 44"
SHIMS ON BOX (FOR EXTERNAL WEB HOLE REINFORCEMENT)	5.72	
16.5" X 7" HXS BRAKES	4.04	
16.5" X 8.625" HXS BRAKES	15.60	
EXTENDED SERVICE/HIGH-DAMPING SHOCKS	2.70	
LOW-PRESSURE AIR SPRINGS	7.60	
SEALED CLAMP-ON DUST SHIELDS	14.60	
SHOCK STRAPS	.90	
HALDEX BRAKE CHAMBERS (STD. STROKE)	40.70	
HALDEX BRAKE CHAMBERS (LONG STROKE)	44.08	
HALDEX BRAKE CHAMBERS (LONG STROKE, EXTENDED WARRANTY)	44.34	
HALDEX SLACK ADJUSTERS (5.5"OR 6.0" LG.)	14.04	
AKH0270-3 HCV KIT (BOLTED LINK)	3.06	
STINGER KIT (23.75" LG)	10.02	
MUD FLAP MTG. ANGLE KIT	23.80	25.30
AIR TANK BRACKET KIT (2800 C.I. TANK)	7.54	8.80
AIR TANK BRACKET KIT (1488 C.I. TANK)	7.74	9.32

TORQUE SPECIFICATIONS		
DESCRIPTION	SIZE	TORQUE (FT-LB)
SHOCK BOLT, UPPER	3/4-10	210-235
SHOCK BOLT, LOWER	3/4-10	210-235
AIR SPRING NUTS, UPPER	3/4-16	80-100
AIR SPRING NUT, LOWER	1/2-13	55-60
S-CAM BEARING BOLTS	3/8-16	35-45
BRAKE CHAMBER MTG. NUTS	5/8-11	100-110
AIR ACTUATOR VALVE MTG. BOLTS	1/4-20	9-13
SPRAY GUARD BRACKET BOLTS	3/8-16	35-45
LOCK PIN BOX BOLTS	5/8-11	200-220
AIR ASSIST CHAMBER MTG. BOLTS	7/16-14	32-38
ACTUATOR AIR LINE FITTINGS	-----	25 MAX.
STINGER MTG. BOLTS	1/2-13	70-80
STINGER AIR LINE BRACKET	3/8-16	35-45
AIR TANK BRACKET BOLTS	3/8-16	35-45
AIR ASSIST CHAMBER JAM NUT	1/2-13	20-30

RIDE HEIGHT	JOUNCE	REBOUND	BUMPER CONTACT	CHAIN ENGAGEMENT	T	H	X	J	R	**SUSPENSION WEIGHT (LB)
STANDARD TRAVEL										
13.5	3.1	5.5	2.5	---	---	8.0	19.5	10.4	19.1 ⁽³⁾	178.68 ⁽³⁾
14.0	3.6	5.0	3.0	---	---	8.0	19.4	10.4	19.1 ⁽³⁾	178.68 ⁽³⁾
15.0	3.6	4.0	3.0	---	---	8.0	19.1	11.4	19.1 ⁽³⁾	180.80 ⁽³⁾
16.0	3.6	4.9	3.1	---	---	10.0	19.4	12.4	20.9	181.64 ⁽³⁾
17.0	3.7	3.9	3.1	---	1.125	10.0	19.1	13.3	20.9	185.40 ⁽³⁾
ZMD TRAVEL ⁽³⁾										
13.5	2.8	5.0	2.5	2.9	---	8.0	19.5	10.7	18.3	192.60
14.0	3.3	4.6	3.0	2.4	---	8.0	19.4	10.5	18.3	192.60
15.0	3.3	4.7	3.0	2.6	---	8.0	19.1	11.5	19.5	194.92
16.0	2.9	5.4	2.6	3.3	1.875	10.0	19.4	11.1	19.4	198.80
17.0	3.4	4.4	3.0	2.3	1.125	10.0	19.1	12.3	20.1	199.52

* SLIDER BOX WEIGHT (LB)				
RIDE HEIGHT	SINGLE AXLE			
	I-BEAM CENTERS			
	37"	38"	43"	44"
13.5				
14.0	345.61 ⁽³⁾	347.79 ⁽³⁾	358.81 ⁽³⁾	361.00 ⁽³⁾
15.0				
16.0	352.73 ⁽³⁾	354.91 ⁽³⁾	365.93 ⁽³⁾	368.12 ⁽³⁾
17.0				

*** AXLE WEIGHT (LB)			
I-BEAM CENTERS	AXLE WALL	STANDARD	
	37" & 38"	43" & 44"	
SPINDLE TYPE	HN	252.48	261.76
	HP	256.94	266.26

*BOX WEIGHT INCLUDES: SLIDER BOX WELDMENT WITH FRAME BRACKETS, LOCK PINS AND ALL PIN PULL COMPONENTS (INCLUDING ACTUATOR VALVE, FITTINGS, ETC.), AND NO SHIMS (FOR TRAILERS WITH INTERNAL WEB REINFORCEMENT AT LOCK PIN HOLES).

** SUSPENSION WEIGHT INCLUDES: BEAMS, BUSHINGS, AXLE WRAPS, PIVOT CONNECTION COMPONENTS, AIR SPRING COMPONENTS, AND SHOCK ABSORBER COMPONENTS. WEIGHT IS TOTAL FOR ONE SUSPENSION.

*** AXLE WEIGHT INCLUDES: AXLE TUBE, SPINDLES, SPIDERS, STANDARD 16.5" X 7" BRAKE COMPONENTS, AND AXLE NUT KIT (BRAKE CHAMBERS AND SLACK ADJUSTERS NOT INCLUDED). WEIGHT IS TOTAL FOR ONE AXLE.

**** OPTION WEIGHT TABLE IS NOT ALL-INCLUSIVE; MANY ADDITIONAL OPTIONS ARE AVAILABLE. CONTACT HENDRICKSON ENGINEERING FOR WEIGHTS OF OPTIONS NOT LISTED IN CHART.

NOTES:

- TO OBTAIN TOTAL SYSTEM WEIGHT, ADD ONE ITEM EACH FROM SLIDER BOX, SUSPENSION & AXLE WEIGHT TABLES, PLUS ALL APPLICABLE OPTION WEIGHTS FROM OPTION WEIGHT TABLE.
- CONTACT HENDRICKSON FOR ALLOWABLE RIDE HEIGHT RANGES.
- JOUNCE AND REBOUND DIMENSIONS CHANGE AS THE RIDE HEIGHT CHANGES FROM THE NORMAL POSITION.
- DIMENSIONS "J" & "R" WILL REMAIN CONSTANT REGARDLESS OF RIDE HEIGHT VARIATION FROM NOMINAL POSITION.

This Print remains the property of Hendrickson. All information contained thereon is confidential. It is loaned, subject to return on demand and on express condition that it is not to be copied or used directly or indirectly for any purpose other than the purpose for which it has been loaned to you.

(3)

	UNLESS OTHERWISE NOTED:	1.3	34089	JMD	08-19-20	DRAWN BY	C. ANDERSON	2-20-04	THIS DRAWING IS THE CONFIDENTIAL PROPERTY OF HENDRICKSON
	TOLERANCES ARE:	INCHES	12	32211	JLW	02-08-19	CHK'D BY	2-20-04 K. GALIGHER	
	ANGULAR:		11	24103	JLW	03-25-15	APP'D BY	T. HESS	
			10	19695	CDR	5-18-11			

TRAILER COMMERCIAL VEHICLE SYSTEMS
2070 INDUSTRIAL PLACE S.E., CANTON, OH 44707-2600 U.S.A.

DIMENSIONS ADHERE TO ANSI Y14.5M-1982

REV. ECN NO. BY DATE

PART NO. # REV. PRODUCTION
DWG D-27452 13
SCALE .25=1.00 SIZE D PAGE 3 OF 3

AAZNT INSTALLATION DRAWING
SINGLE SLIDER
D-27452