

H PARTS LIST

STEERTEK™ NXT/STEERTEK™ Axle and SOFTEK® • AIRTEK® Systems for International Truck Vehicles

LIT NO: SP-182

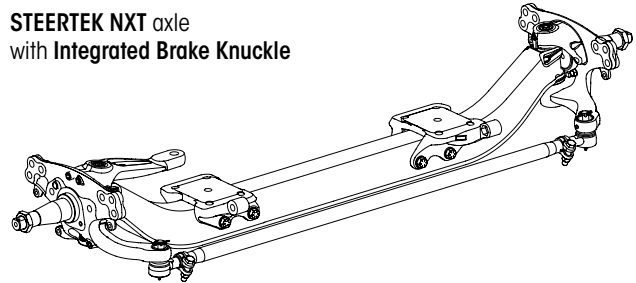
DATE: August 2019

REVISION: I

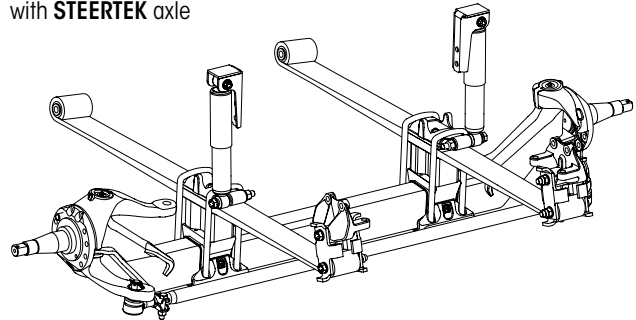
CONTENTS

DESCRIPTION	PAGE
Parts Lists	
■ STEERTEK™ NXT Axle Cross Caster	2
■ STEERTEK™ Axle Vehicles built prior to August 1, 2011	8
■ SOFTEK® Monoleaf vehicles built with STEERTEK Axle prior to June 2014	10
■ AIRTEK® New Engine Configuration (NEC) Vehicles built between September 2006 and November 2010	12
■ AIRTEK prior to New Engine Configuration (PEC). Vehicles built prior to September 2006	14
Selection Guides	
STEERTEK NXT Axle	
■ Medium-duty for MV Series	4
■ Standard-duty for LT Series • Prostar	4
■ Standard-duty for LS Series • Lonestar	6
■ Standard-duty for RH Series • Transtar	7
STEERTEK Axle	
■ T Series • Prostar	9
■ RH Series • 8600 • Transtar	9
■ LS Series • Lonestar	9
■ 9200/9400	9
Tie Rod Selection Guide	17
Special Tool	18

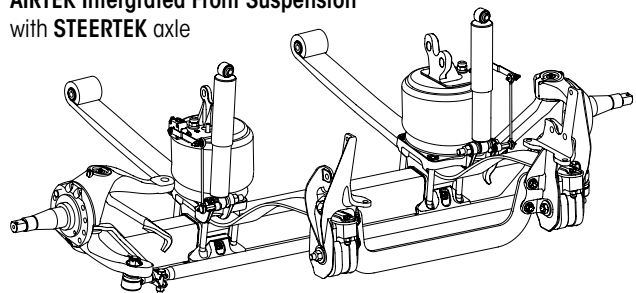
STEERTEK NXT axle
with Integrated Brake Knuckle



SOFTEK Monoleaf Intergrated Front Suspension
with STEERTEK axle



AIRTEK Intergrated Front Suspension
with STEERTEK axle

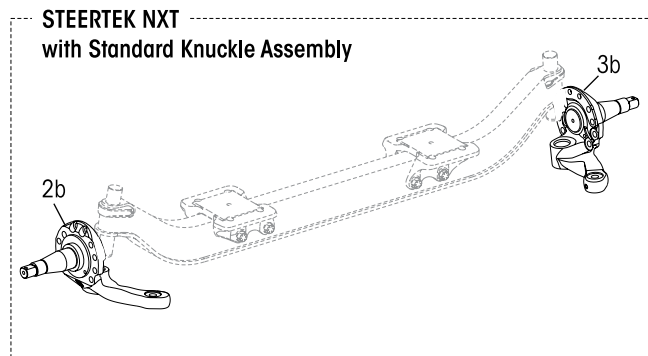
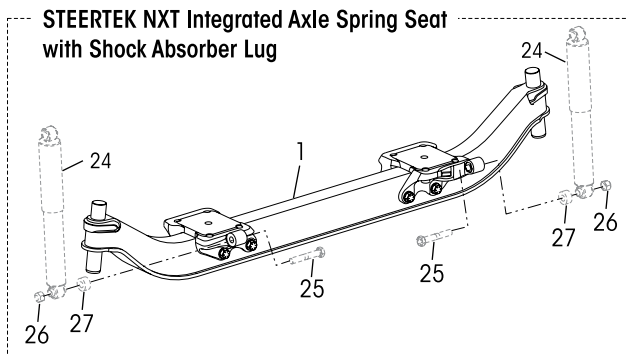
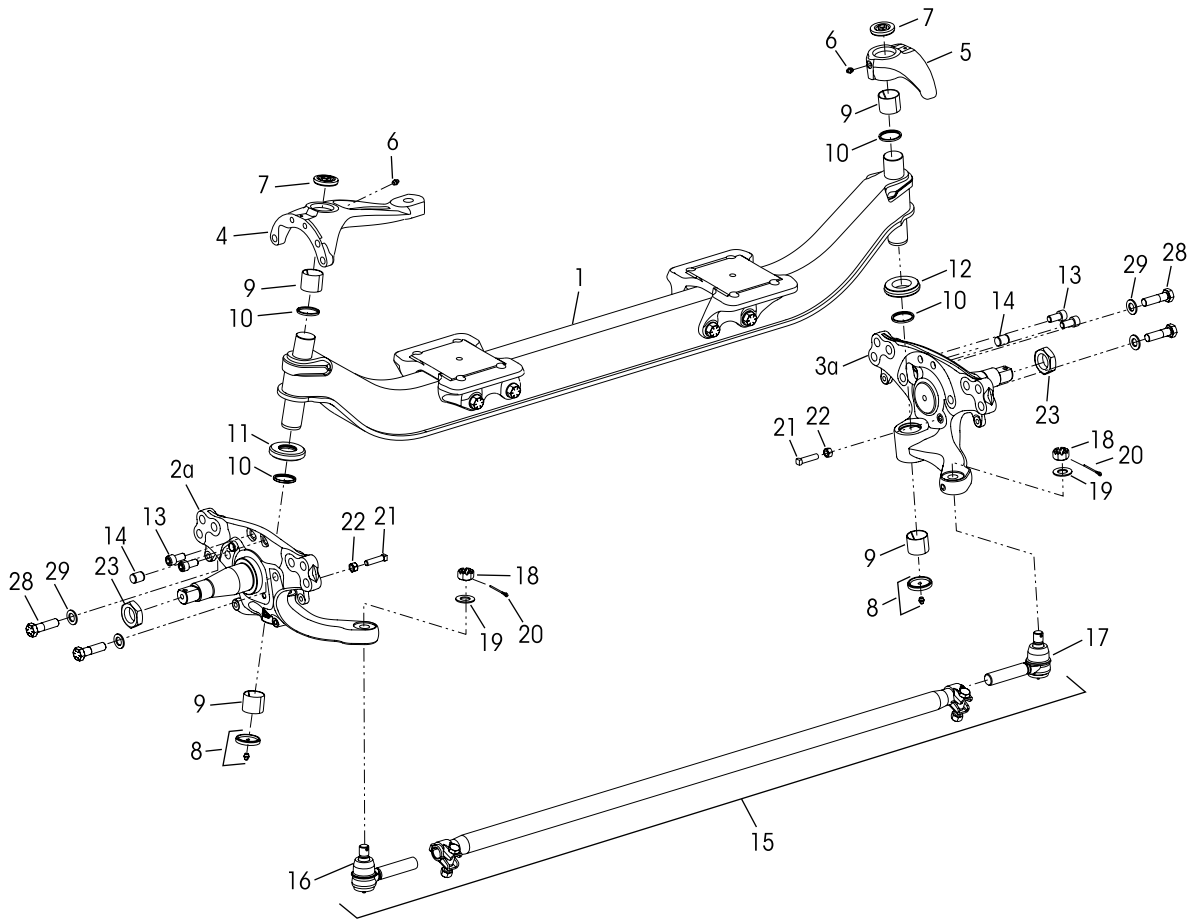




STEERTEK NXT Axle Cross Caster

- Medium-duty with Standard Brake Knuckle
- Standard-duty with Standard Brake Knuckle | Integrated Brake Knuckle (IBK)

ProStar (LT Series) 12K, 12.35K, 13.2K, 14K, 14.6K • TranStar (RH Series) 12K, 12.35K, 14K
 LoneStar (LS Series) 12.35K, 13.2K, 14K, 14.6K





STEERTEK™ NXT Axle for International Truck Vehicles

KEY NO.	PART NO.	DESCRIPTION	VEHICLE QTY.	KEY NO.	PART NO.	DESCRIPTION	VEHICLE QTY.
		STEERTEK NXT Cross Caster Axle Assembly, <i>See Selection Guide on Page 4</i>	1			Thrust Bearing Service Kits,	
	79487-XXX	Medium-duty • 10K, 12K w/Standard Brake Knuckle, Includes Key Nos. 1-10, 12-23			60961-631	Axle Set, Includes Kit Nos. 60961-632 & -633	
	92997-XXX	*****Standard-duty, <i>Replaces 68997-XXX</i> • 12K, 12.35K, 13.2K 14K, 14.6K w/Standard Brake Knuckle, Includes Key Nos. 1-23 • 12K, 12.35K, 13.2K w/Integrated Brake Knuckle (IBK), Includes Key Nos. 1-23, 28-29			60961-632	**** Left Hand Composite Thrust Bearing, Includes Key Nos. 10-11, 13 & Loctite, for 92997-XXX Axle	
1		***Axle & Kingpin Assembly, Cross Caster <i>See Selection Guide on Page 4</i>	1		60961-633	Roller Thrust Bearing, Includes Key Nos. 10, 12-13 & Loctite	
	79486-XXXM	10K, 12K Medium-duty		10	68731-000	Kingpin Seal	4
	92996-XXXM	*****12K, 12.35K, 13.2K, 14K, 14.6K Standard-duty, <i>Replaces 68996-XXXM</i>		11	59828-000	****Left Hand Composite Thrust Bearing	1
		Lower Steering Knuckle Assembly, Includes Key Nos. 8-10, 14, 21-22, <i>See Selection Guide on Page 4</i>		12	64256-000L	****Roller Thrust Bearing	1
a	80029-XXX	• with Integrated Brake Knuckle Assembly		13	60236-001	5/8"-11 UNC Socket Head Cap Screw	4
b	58900-XXX	• with Standard Brake Knuckle Assembly		Not Shown	60937-000	Loctite® (Red) Compound Tube	1
2		Left Hand	1	14	64246-000	ABS Sensor Sleeve	2
3		Right Hand	1	15		Tie Rod Assembly, Includes Key Nos. 16-18 <i>See Selection Guide on Page 17</i>	1
		Upper Steering Knuckle Assembly, Includes Key Nos. 6-7, 9-10, <i>See Selection Guide on Page 4</i>				Tie Rod End Service Kits, See Selection Guide on Page 17	
4	60903-XXX	Left Hand	1			Axle Set, Includes Left Hand & Right Hand Kits	
5	60904-XXX	Right Hand	1			Left Hand, Includes Key Nos. 16, 18-20	
		Kingpin Bushing and Bearing Service Kits,				Right Hand, Includes Key Nos. 17-20	
	60961-628	Axle Set, Includes Kit Nos. 60961-629 & -630				Tie Rod End, Includes Key No. 18, <i>See Selection Guide on Page 17</i>	
	60961-629	Left Hand Composite Thrust Bearing, Includes Key Nos. 6-11, 13, Loctite		16		Left Hand	1
	60961-630	Roller Thrust Bearing, Includes Key Nos. 6-10, 12-13, Loctite		17		Right Hand	1
6	33117-000	Grease Zerk	2	18		**7/8" Castle Nut	2
7	68687-003	Upper Grease Cap Assembly	2	19	22962-007	7/8" Flat Washer	2
8	68687-002	Lower Grease Cap Assembly	2	20	17800-004	Tie Rod Nut Cotter Pin	2
9	58909-001	Kingpin Bushing	4		60961-069	Stop Bolt Service Kit, One Side, Includes Key Nos. 21-22	
				21	60238-001	1/2"-13 UNC Square Head Bolt	2
				22	60240-000	1/2"-13 UNC Hex Jam Nut	2
				23	64578-000	1 1/2"-12 UNF Spindle Nut	2
				24		*Shock Absorber	2
				25		*3/4"-10 UNC x 5" Lower Shock Flange Bolt	2
				26		*3/4"-10 UNC Lower Shock Hex Flange Locknut	2
				27		*Shock Spacer (if equipped)	2
				28		**3/4"-16 UNF x 2 3/4" Bolt (IBK)	4
				29		**3/4" Flat Washer (IBK)	4

NOTES: * Not supplied by Hendrickson, used for reference only. Hendrickson is not responsible for components supplied by the vehicle manufacturer. For assistance with maintenance and rebuild instructions on these components see vehicle manufacturer.

** Item included in kit/assembly only, part not sold separately.

*** Axle spring seats come assembled with the axle beam and are not serviceable.

**** Effective January 2019, vehicles equipped with Hendrickson STEERTEK NXT/STEERTEK with the exception of 79487-XXX axle, will be installed with a left hand **composite** bearing and a right hand **roller** bearing configuration to replace the previous roller/roller bearing configuration for production and aftermarket.

***** Effective May 2019, the STEERTEK NXT cross caster axle assemblies replaced the non-cross caster axle assemblies (92997-XXX series replaced the 68997-XXX series and the 92996-XXX series replaced the 68996-XXX series).



■ Medium-duty Cross Caster with Standard Brake Knuckle Selection Guide

	Capacity	Mounting Fasteners	Wheel Base	KPI	STEERTEK NXT Assembly	Axle & Kingpin Assembly Key No. 1	Part Number			
							Lower Steering Knuckle Assembly		Upper Steering Knuckle Assembly	
							Left Hand Key No. 2	Right Hand Key No. 3	Left Hand Key No. 4	Right Hand Key No. 5
MV SERIES	10K	5/8"	< 200"	69.0"	79487-001	79486-002M	58900-293	58900-294	60903-279	60904-234
			> 200"		79487-002		58900-273	58900-274	60903-279	60904-234
		3/4"	< 200"	79487-003	58900-493		58900-494	60903-479	60904-432	
			> 200"	79487-004	58900-473		58900-474	60903-479	60904-432	
	12K	5/8"	< 200"	69.0"	79487-005	79486-004M	58900-293	58900-294	60903-279	60904-234
			> 200"		79487-006		58900-273	58900-274	60903-279	60904-234
		3/4"	< 200"	79487-007	58900-493		58900-494	60903-479	60904-432	
			> 200"	79487-008	58900-473		58900-474	60903-479	60904-432	

■ Standard-duty Cross Caster with Integrated Brake Knuckle (IBK) Selection Guide

LT SERIES • PROSTAR	12K	3/4"	< 200"	70.9"	*92997-503	*92996-001M	80029-093	80029-094	60903-463	60904-432
			> 200"		*92997-504		80029-073	80029-074		
		3/4"	< 200"	*92997-547	80029-093		80029-094			
			> 200"	*92997-548	80029-073		80029-074			
	12.35K	3/4"	< 200"	70.9"	*92997-543	*92996-001M	80029-093	80029-094		
			> 200"		*92997-544		80029-073	80029-074		
		3/4"	< 200"	*92997-559	80029-093		80029-094			
			> 200"	*92997-560	80029-073		80029-074			
	13.2K	3/4"	< 200"	70.9"	*92997-617	*92996-009M	80029-093	80029-094		
			> 200"		*92997-618		80029-073	80029-074		
		3/4"	< 200"	*92997-627	80029-093		80029-094			
			> 200"	*92997-628	80029-073		80029-074			

■ Standard-duty Cross Caster with Standard Brake Knuckle built after August 1, 2011 Selection Guide

LT SERIES • PROSTAR	12K	3/4"	< 200"	69.0"	*92997-001	*92996-002M	58900-493	58900-494	60903-462	60904-432
			> 200"		*92997-002		58900-473	58900-474		
			3/4"	< 200"	*92997-003		58900-493	58900-494		
				> 200"	*92997-004		58900-473	58900-474		
		3/4"	69.0"	< 200"	*92997-045	*92996-006M	58900-493	58900-494	60903-462	
				> 200"	*92997-046	58900-473	58900-474			
			70.9"	< 200"	*92997-047	*92996-005M	58900-493	58900-494	60903-463	
				> 200"	*92997-048	58900-473	58900-474			
	5/8"	69.0"	< 200"	*92997-061	*92996-002M	58900-293	58900-294	60903-262		
			> 200"	*92997-062	58900-273	58900-274				
		70.9"	< 200"	*92997-063	*92996-001M	58900-293	58900-294	60903-263		
			> 200"	*92997-064	58900-273	58900-274				
	5/8"	69.0"	< 200"	*92997-097	*92996-006M	58900-293	58900-294	60903-262		
			> 200"	*92997-098	58900-273	58900-274				
		70.9"	< 200"	*92997-099	*92996-005M	58900-293	58900-294	60903-263		
			> 200"	*92997-100	58900-273	58900-274				

See notes on Page 7

Continued on Next Page



■ Standard-duty Cross Caster with Standard Brake Knuckle built after August 1, 2011 Selection Guide

Capacity	Mounting Fasteners	Wheel Base	KPI	Part Number						
				STEERTEK NXT Assembly	Axle & Kingpin Assembly Key No. 1	Lower Steering Knuckle Assembly		Upper Steering Knuckle Assembly		
						Left Hand Key No. 2	Right Hand Key No. 3	Left Hand Key No. 4	Right Hand Key No. 5	
12.35K	¾"	< 200"	69.0"	*92997-005	*92996-002M	58900-493	58900-494	60903-462	60904-432	
		> 200"		*92997-006		58900-473	58900-474			
		< 200"	70.9"	*92997-043	*92996-001M	58900-493	58900-494	60903-463		
		> 200"		*92997-044		58900-473	58900-474			
	¾"	< 200"	69.0"	*92997-049	*92996-006M	58900-493	58900-494	60903-462	60904-432	
		> 200"		*92997-050		58900-473	58900-474			
		< 200"	70.9"	*92997-059	*92996-005M	58900-493	58900-494	60903-463		
		> 200"		*92997-060		58900-473	58900-474			
	⅝"	< 200"	69.0"	*92997-065	*92996-002M	58900-293	58900-294	60903-262	60904-232	
		> 200"		*92997-066		58900-273	58900-274			
		< 200"	70.9"	*92997-095	*92996-001M	58900-293	58900-294	60903-263		
		> 200"		*92997-096		58900-273	58900-274			
	⅝"	< 200"	69.0"	*92997-101	*92996-006M	58900-293	58900-294	60903-262	60904-232	
		> 200"		*92997-102		58900-273	58900-274			
		< 200"	70.9"	*92997-111	*92996-005M	58900-293	58900-294	60903-263		
		> 200"		*92997-112		58900-273	58900-274			
	13.2K	¾"	< 200"	70.9"	*92997-007	*92996-009M	58900-493	58900-494	60903-463	60904-432
			> 200"		*92997-008		58900-473	58900-474		
			< 200"	69.0"	*92997-009	*92996-010M	58900-493	58900-494	60903-462	
			> 200"		*92997-010		58900-473	58900-474		
¾"		< 200"	70.9"	*92997-051	*92996-011M	58900-493	58900-494	60903-463	60904-432	
		> 200"		*92997-052		58900-473	58900-474			
		< 200"	69.0"	*92997-053	*92996-012M	58900-493	58900-494	60903-462		
		> 200"		*92997-054		58900-473	58900-474			
⅝"		< 200"	70.9"	*92997-067	*92996-009M	58900-293	58900-294	60903-263	60904-232	
		> 200"		*92997-068		58900-273	58900-274			
		< 200"	69.0"	*92997-069	*92996-010M	58900-293	58900-294	60903-262		
		> 200"		*92997-070		58900-273	58900-274			
⅝"		< 200"	70.9"	*92997-103	*92996-011M	58900-293	58900-294	60903-263	60904-232	
		> 200"		*92997-104		58900-273	58900-274			
		< 200"	69.0"	*92997-105	*92996-012M	58900-293	58900-294	60903-262		
		> 200"		*92997-106		58900-273	58900-274			
14K	¾"	< 200"	69.0"	92997-011	92996-004M	58900-493	58900-494	60903-462	60904-432	
		> 200"		92997-012		58900-473	58900-474			
	¾"	< 200"	69.0"	92997-055	92996-008M	58900-493	58900-494	60903-462	60904-432	
		> 200"		92997-056		58900-473	58900-474			
	¾"	< 200"	70.9"	92997-113	92996-007M	58900-493	58900-494	60903-463	60904-432	
		> 200"		92997-114		58900-473	58900-474			

See notes on Page 7

Continued on Next Page



■ Standard-duty Cross Caster with Standard Brake Knuckle built after August 1, 2011 Selection Guide

				Part Number							
Capacity	Mounting Fasteners	Wheel Base	KPI	STEERTEK NXT Assembly	Axle & Kingpin Assembly Key No. 1	Lower Steering Knuckle Assembly		Upper Steering Knuckle Assembly			
						Left Hand Key No. 2	Right Hand Key No. 3	Left Hand Key No. 4	Right Hand Key No. 5		
LT SERIES • PROSTAR	14K	5/8"	< 200"	69.0"	92997-071	92996-004M	58900-293	58900-294	60903-262	60904-232	
			> 200"		92997-072		58900-273	58900-274			
		5/8"	< 200"	69.0"	92997-107	92996-008M	58900-293	58900-294	60903-262	60904-232	
			> 200"		92997-108		58900-273	58900-274			
		5/8"	< 200"	70.9"	92997-115	92996-007M	58900-293	58900-294	60903-263	60904-232	
			> 200"		92997-116		58900-273	58900-274			
	14.6K	3/4"	< 200"	69.0"	92997-013	92996-004M	58900-493	58900-494	60903-462	60904-432	
			> 200"		92997-014		58900-473	58900-474			
			3/4"	< 200"	69.0"	92997-057	92996-008M	58900-493	58900-494	60903-462	60904-432
				> 200"		92997-058		58900-473	58900-474		
		5/8"	< 200"	69.0"	92997-073	92996-004M	58900-293	58900-294	60903-262	60904-232	
			> 200"		92997-074		58900-273	58900-274			
5/8"			< 200"	69.0"	92997-109	92996-008M	58900-293	58900-294	60903-262	60904-232	
			> 200"		92997-110		58900-273	58900-274			
LS SERIES • LONESTAR	12.35K	3/4"	< 200"	70.9"	*92997-015	*92996-001M	58900-493	58900-494	60903-468	60904-432	
			> 200"		*92997-016		58900-473	58900-474			
		5/8"	< 200"	70.9"	*92997-075	*92996-001M	58900-293	58900-294	60903-268	60904-232	
			> 200"		*92997-076		58900-273	58900-274			
	13.2K	3/4"	< 200"	70.9"	*92997-017	*92996-009M	58900-493	58900-494	60903-468	60904-432	
			> 200"		*92997-018		58900-473	58900-474			
			3/4"	< 200"	69.0"	*92997-019	*92996-010M	58900-493	58900-494	60903-465	60904-432
				> 200"		*92997-020		58900-473	58900-474		
		5/8"	< 200"	70.9"	*92997-077	*92996-009M	58900-293	58900-294	60903-268	60904-232	
			> 200"		*92997-078		58900-273	58900-274			
			5/8"	< 200"	69.0"	*92997-079	*92996-010M	58900-293	58900-294	60903-265	60904-232
				> 200"		*92997-080		58900-273	58900-274		
14K	3/4"	< 200"	70.9"	92997-021	92996-003M	58900-493	58900-494	60903-469	60904-432		
		> 200"		92997-022		58900-473	58900-474				
		3/4"	< 200"	69.0"	92997-023	92996-004M	58900-493	58900-494	60903-466	60904-432	
			> 200"		92997-024		58900-473	58900-474			
	5/8"	< 200"	70.9"	92997-081	92996-003M	58900-293	58900-294	60903-269	60904-232		
		> 200"		92997-082		58900-273	58900-274				
		5/8"	< 200"	69.0"	92997-083	92996-004M	58900-293	58900-294	60903-266	60904-232	
			> 200"		92997-084		58900-273	58900-274			
14.6K	3/4"	< 200"	69.0"	92997-025	92996-004M	58900-493	58900-494	60903-466	60904-432		
		> 200"		92997-026		58900-473	58900-474				
	5/8"	< 200"	69.0"	92997-085	92996-004M	58900-293	58900-294	60903-266	60904-232		
		> 200"		92997-086		58900-273	58900-274				

See notes on Page 7

Continued on Next Page



■ Standard-duty Cross Caster with Standard Brake Knuckle built after August 1, 2011 Selection Guide

	Capacity	Mounting Fasteners	Wheel Base	KPI	Part Number					
					STEERTEK NXT Assembly	Axle & Kingpin Assembly Key No. 1	Lower Steering Knuckle Assembly		Upper Steering Knuckle Assembly	
							Left Hand Key No. 2	Right Hand Key No. 3	Left Hand Key No. 4	Right Hand Key No. 5
RH SERIES • TRANSTAR	12K	3/4"	< 200"	70.9"	*92997-029	*92996-001M	58900-493	58900-494	60903-467	60904-432
			> 200"		*92997-030		58900-473	58900-474		
		3/4"	< 200"	69.0"	*92997-033	*92996-002M	58900-493	58900-494	60903-464	60904-432
			> 200"		*92997-034		58900-473	58900-474		
		5/8"	< 200"	70.9"	*92997-087	*92996-001M	58900-293	58900-294	60903-267	60904-232
			> 200"		*92997-088		58900-273	58900-274		
	5/8"	< 200"	69.0"	*92997-089	*92996-002M	58900-293	58900-294	60903-264	60904-232	
		> 200"		*92997-090		58900-273	58900-274			
	13K	3/4"	< 200"	70.9"	*92997-037	*92996-003M	58900-493	58900-494	60903-467	60904-432
			> 200"	70.9"	*92997-038		58900-473	58900-474		
		5/8"	< 200"	70.9"	*92997-091	*92996-003M	58900-293	58900-294	60903-267	60904-232
			> 200"	70.9"	*92997-092		58900-273	58900-274		
14K	3/4"	< 200"	70.9"	92997-041	92996-003M	58900-493	58900-494	60903-467	60904-432	
		> 200"	70.9"	92997-042		58900-473	58900-474			
	5/8"	< 200"	70.9"	92997-093	92996-003M	58900-293	58900-294	60903-267	60904-232	
		> 200"	70.9"	92997-094		58900-273	58900-274			

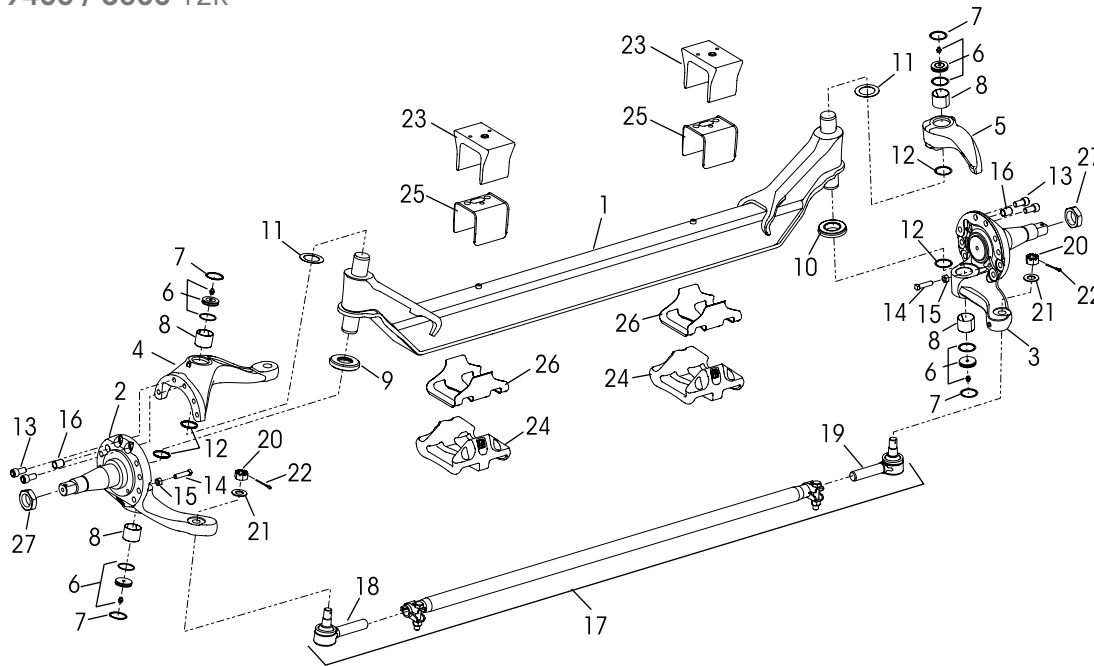
NOTE: Items shown in light gray denotes STEERTEK NXT integrated axle spring seat **without** shock absorber lug.

* Effective May 2019, the STEERTEK NXT cross caster axle assemblies replaced the non-cross caster axle assemblies (92997-XXX series replaced the 68997-XXX series and the 92996-XXX series replaced the 68996-XXX series)



Vehicles built with STEERTEK Axle PRIOR TO August 1, 2011

ProStar 12K, 12.35K, 13.2K, 14K, 14.6K • TranStar 12K, 13K, 14K • LoneStar 12.35K, 13.2K, 14K, 14.6K • 9200 / 9400 / 8600 12K



KEY NO.	PART NO.	DESCRIPTION	VEHICLE QTY.
	70952-XXX	STEERTEK Axle Assembly , Includes Key Nos. 1-13, 16-27, <i>See Selection Guide on Page 9</i>	1
1		Axle & Kingpin Assembly	1
	64905-001	LoneStar • TranStar • 9200 / 9400 Models-12K	
	64905-002	ProStar Model -12K, 12.35K	
	64905-005	TranStar Model -13K, 14K	
	64905-006	ProStar • LoneStar Models -13.2K, 14K, 14.6K	
		Lower Steering Knuckle Assembly , Includes Key Nos. 8, 12, 16, <i>See Selection Guide on Page 9</i>	
2		Left Hand	1
3		Right Hand	1
		Upper Steering Knuckle Assembly , Includes Key Nos. 8, 12	
4		Left Hand, <i>See Selection Guide on Page 9</i>	1
5	60904-034	Right Hand	1
		Kingpin Bushing and Bearing Service Kits	
	60961-040	Axle Set , Includes Kit Nos. 60961-009 & -039	
	60961-009	Left Hand with Composite Thrust Bearing , Includes Key Nos. 6-9, 11-13, Loctite	
	60961-039	Right Hand with Roller Thrust Bearing , Includes Key Nos. 6-8, 10-13, Loctite	
6	59156-000	Grease Cap Assembly	4
7	58937-000	Retaining Ring	4
8	58909-000	Kingpin Bushing	4
		Thrust Bearing Service Kits	
	60961-043	Axle Set , Includes Kit Nos. 60961-041 & -042	
	60961-041	Left Hand Composite Thrust Bearing , Includes Key Nos. 9, 11-13, Loctite	
	60961-042	Right Hand Roller Thrust Bearing , Includes Key Nos. 10-13, Loctite	
9	59828-000	*Left Hand Composite Thrust Bearing	1

KEY NO.	PART NO.	DESCRIPTION	VEHICLE QTY.
10	64256-000L	*Right Hand Roller Thrust Bearing	1
11		Kingpin Shim	As Req.
	60259-001X	0.005" Thickness (Pack of 4)	
	60259-002	0.047" Thickness	
12	58910-001	Kingpin Seal, <i>Replaces 58910-000</i>	4
13	60236-001	5/8"-11 UNC Socket Head Cap Screw	4
Not Shown	60937-000	Loctite® (Red) Compound Tube	1
	60961-069	Stop Bolt Service Kit, One Side , Includes Key Nos. 14-15	
14	60238-001	1/2"-13 UNC Square Head Bolt	2
15	60240-000	1/2"-13 UNC Hex Jam Nut	2
16	64246-000	ABS Sensor Sleeve	2
17		Tie Rod Assembly, Includes Key Nos. 18-20 <i>See Selection Guide on Page 17</i>	1
		Tie Rod End Service Kits , <i>See Selection Guide on Page 17</i>	
		Axle Set , Includes Left Hand & Right Hand Kits	
		Left Hand , Includes Key Nos. 18, 20-22	
		Right Hand , Includes Key Nos. 19-22	
		Tie Rod End, Includes Key No. 20, <i>See Selection Guide on Page 17</i>	
18		Left Hand	1
19		Right Hand	1
20		**7/8" Castle Nut	2
21	22962-007	7/8" Flat Washer	2
22	17800-004	Tie Rod Nut Cotter Pin	2
23		Top Axle Wrap, <i>See Selection Guide on Page 9</i>	2
24	64722-003	Bottom Axle Wrap	2
25	65757-000	Top Axle Wrap Liner	2
26	59845-000	Bottom Axle Wrap Liner	2
27	64578-000	1 1/2"-12 UNF Spindle Nut	2

NOTES: * Effective January 2019, vehicles equipped with Hendrickson STEERTEK axle will be installed with a left hand **composite** bearing and a right hand **roller** bearing configuration to replace the previous roller/roller bearing configuration for production and aftermarket.

** Item included in kit/assembly only, part not sold separately.



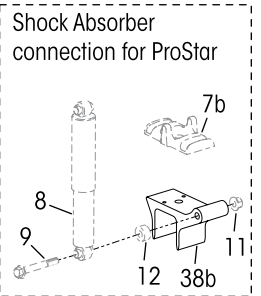
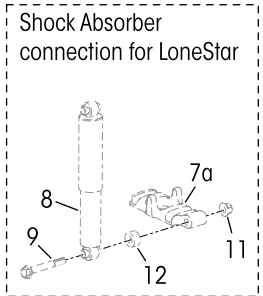
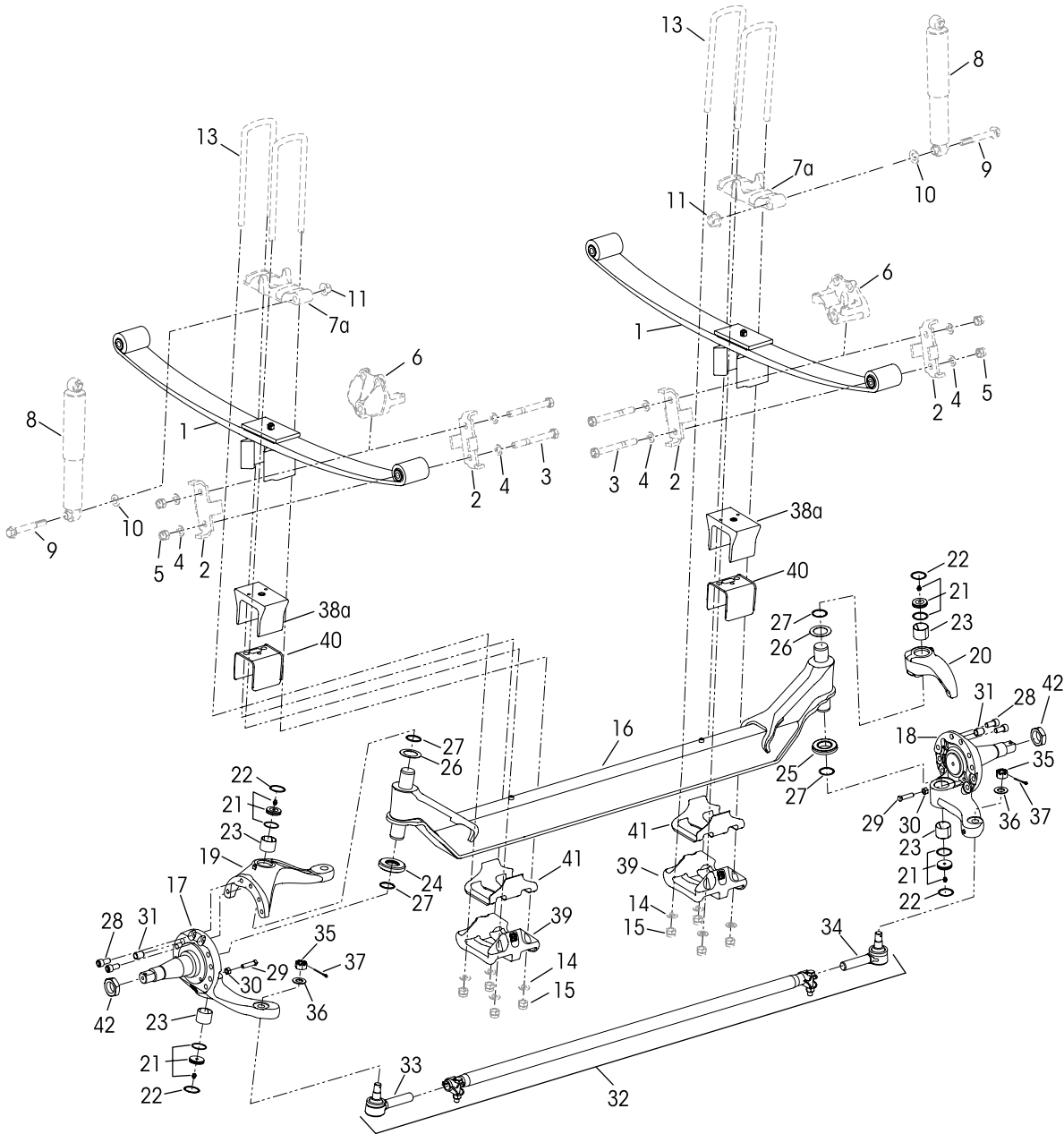
■ Vehicles built with STEERTEK axle prior to 1, 2011 Selection Guide

	Capacity	Wheel Base	KPI	Part Number						
				STEERTEK Axle Assembly	Lower Steering Knuckle Assembly		Upper Steering Knuckle Assembly Left Hand Key No. 4	Top Axle Wrap Key No. 23		
					Left Hand Key No. 2	Right Hand Key No. 3				
LT SERIES • PROSTAR	12K	< 200"	69.0"	70952-351	58900-075	58900-076	60903-042	59952-032		
		> 200"		70952-352	58900-073	58900-074				
	12.35K	< 200"		70952-353	58900-075	58900-076				
		> 200"		70952-354	58900-073	58900-074				
	13.2K	< 200"	70.9"	70952-355	58900-075	58900-076				
		> 200"		70952-356	58900-073	58900-074				
		< 200"	69.0"	70952-357	58900-075	58900-076				
	> 200"	70952-358		58900-073	58900-074					
	14K	< 200"		70952-359	58900-075	58900-076				
		> 200"		70952-390	58900-073	58900-074				
14.6K	< 200"	70952-391	58900-075	58900-076						
	> 200"	70952-392	58900-073	58900-074						
RH SERIES/8600 • TRANSTAR	12K	< 200"	70.9"	70952-281	58900-075	58900-076	60903-044	59952-023		
		> 200"		70952-280	58900-073	58900-074		59952-032		
		< 200"		70952-335	58900-093	58900-094				
		> 200"		70952-336	58900-091	58900-092				
	13K	< 200"	69.0"	70952-339	58900-093	58900-094	60903-061	59952-032		
		> 200"		70952-341	58900-093	58900-094				
		< 200"	70.9"	70952-342	58900-091	58900-092	60903-056	59952-023		
		> 200"		70952-343	58900-093	58900-094				
		< 200"		70952-344	58900-091	58900-092		59952-032		
		> 200"		70952-346	58900-091	58900-092				
		14K		> 200"	70.9"	70952-347	58900-093	58900-094	60903-061	59952-023
				< 200"		70952-348	58900-091	58900-092		59952-032
> 200"										
< 200"										
LS SERIES • LONESTAR	12.35K	< 200"	70.9"	70952-310	58900-075	58900-076	60903-056	59952-023		
		> 200"		70952-311	58900-073	58900-074				
	13.2K	< 200"		70952-393	58900-075	58900-076		59952-034		
		> 200"		70952-394	58900-073	58900-074				
		< 200"	69.0"	70952-395	58900-075	58900-076		59952-023		
		> 200"		70952-396	58900-073	58900-074				
	14K	< 200"	70.9"	70952-397	58900-075	58900-076		59952-034		
		> 200"		70952-398	58900-073	58900-074				
		< 200"	69.0"	70952-399	58900-075	58900-076		59952-023		
		> 200"		70952-400	58900-073	58900-074				
14.6K	< 200"	70952-401	58900-075	58900-076						
	> 200"	70952-402	58900-073	58900-074						
9200/9400	12K	< 200"	70.9"	70952-279	58900-075	58900-076	60903-042	59952-023		
		> 200"		70952-278	58900-073	58900-074				



Vehicles built with STEERTEK Axle PRIOR TO June 2014

LoneStar 12.35K • ProStar 12K, 12.35K • TranStar 12K • 9200 / 9400 / 8600 12K





SOFTEK® Monoleaf for International Truck Vehicles

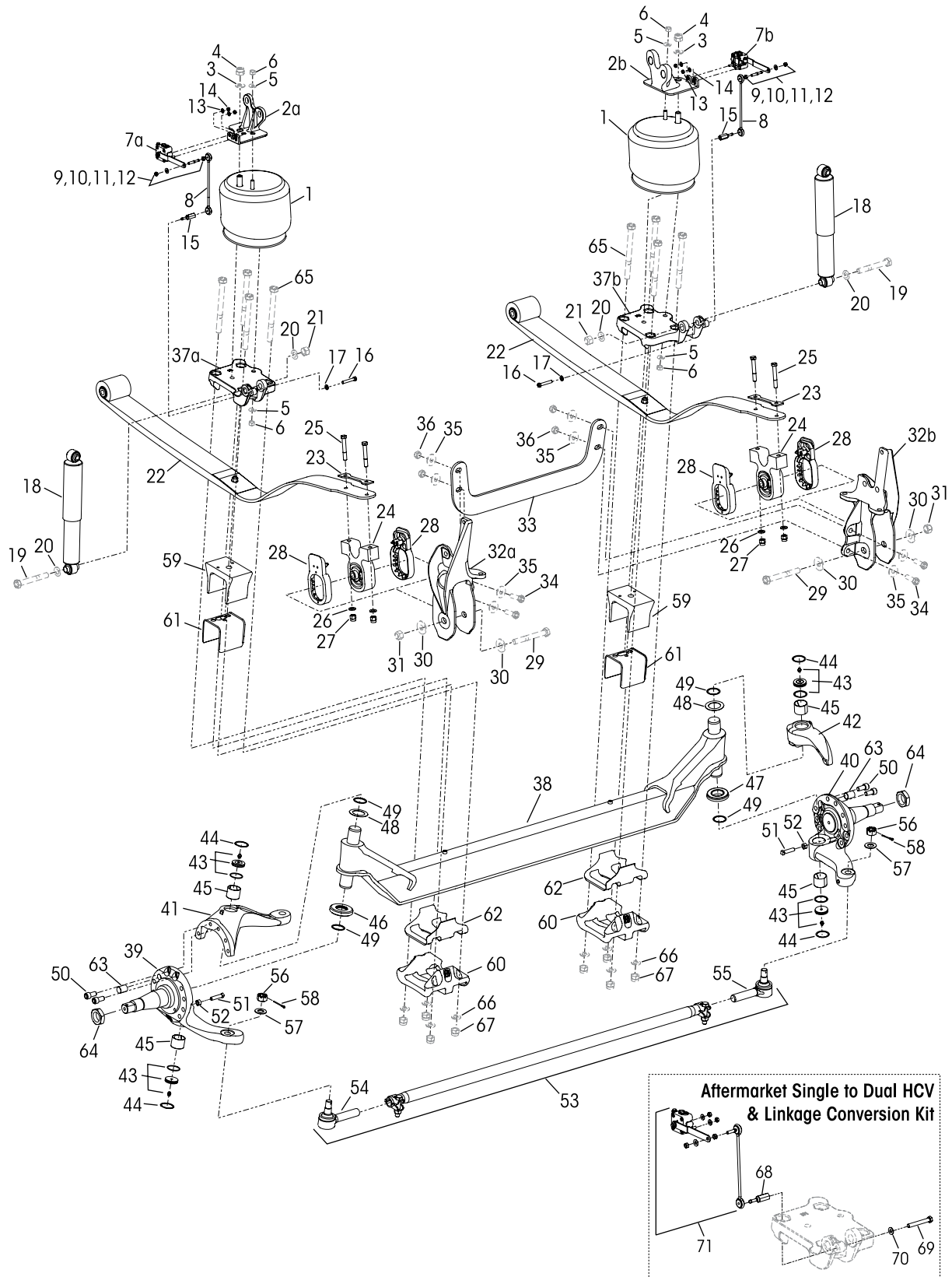
KEY NO.	PART NO.	DESCRIPTION	VEHICLE QTY.	KEY NO.	PART NO.	DESCRIPTION	VEHICLE QTY.
1	53597-000	Monoleaf Spring Assembly, Includes Bushings LoneStar • ProStar • 9200/9400 Models <i>Replaces 53297-000, 67399-001, 66347-001, 53497-000</i>	2	20	60904-034	Right Hand Upper Steering Knuckle Assembly, Includes Key Nos. 23, 27	1
	53598-000	TranStar • 8600 Models <i>Replaces 53298-000, 67399-002, 66347-002, 53498-000</i>				Kingpin Bushing and Bearing Service Kits	
2		*Shackle Plate	4		60961-040	Axle Set , Includes Kit Nos. 60961-009 & -039	
3		*¾" -16 UNF x 6½" Bolt	4		60961-009	Left Hand with Composite Thrust Bearing , Includes Key Nos. 21-24, 26-28 & Loctite	
4		*¾" Flat Washer	8		60961-039	Right Hand with Roller Thrust Bearing , Includes Key Nos. 21-23, 25-28 & Loctite	
5		*¾" -16 UNF Locknut	4	21	59156-000	Grease Cap Assembly	4
6		*Rear Spring Mount	2	22	58937-000	Retaining Ring	4
7		*Top Pad	2	23	58909-000	Kingpin Bushing	4
a		LoneStar • TranStar • 9200/9400/8600 Models				Thrust Bearing Service Kits	
b		ProStar Model			60961-043	Axle Set , Includes Kit Nos. 60961-041 & -042	
8		*Shock Absorber	2		60961-041	Left Hand Composite Thrust Bearing , Includes Key Nos. 24, 26-28 & Loctite	
9		*¾" -10 UNC x 5" Lower Shock Flange Bolt	2		60961-042	Right Hand Roller Thrust Bearing , Includes Key Nos. 25-28 & Loctite	
10		*¾" Lower Shock Hardened Washer	2	24	59828-000	Left Hand Composite Thrust Bearing	1
11		*¾" -10 UNC Lower Shock Flange Locknut	2	25	64256-000L	Right Hand Roller Thrust Bearing	1
12		*Shock Spacer - 19 mm	2	26		Kingpin Shim	As Req.
13		*¾" -16 UNF U-bolt 7.75" Ride Height - 13" Long 7.00" Ride Height - 12¼" Long	4		60259-001X	0.005" Thickness (Pack of 4)	
14		*¾" Flat Washer	8		60259-002	0.047" Thickness	
15		*¾" -16 UNF Locknut	8	27	58910-001	Kingpin Seal, <i>Replaces 58910-000</i>	4
		STEERTEK Axle Assembly , Includes Key Nos. 16-42	1	28	60236-001	¾"-11 UNC Socket Head Cap Screw	4
	70952-311	12.35K, LoneStar Model		Not Shown	60937-000	Loctite® (Red) Compound Tube	1
	70952-310	Above 200" Wheel Base Below 200" Wheel Base			60961-069	Stop Bolt Service Kit, One Side , Includes Key Nos. 29-30	
	70952-313	12K, 12.35K, ProStar Model		29	60238-001	½"-13 UNC Square Head Bolt	2
	70952-312	Above 200" Wheel Base Below 200" Wheel Base		30	60240-000	½"-13 UNC Hex Jam Nut	2
	70952-278	12K, 9200/9400 Models		31	64246-000	ABS Sensor Sleeve	2
	70952-279	Above 200" Wheel Base Below 200" Wheel Base		32		Tie Rod Assembly, Includes Key Nos. 33-35 <i>See Selection Guide on Page 17</i>	1
	70952-280	12K, TranStar • 8600 Models				Tie Rod End Service Kits , <i>See Selection Guide on Page 17</i>	
	70952-281	Above 200" Wheel Base Below 200" Wheel Base				Axle Set , Includes Left Hand & Right Hand Kits	
16	64905-001	Axle & Kingpin Assembly	1			Left Hand , Includes Key Nos. 33, 35-37	
17		Left Hand Lower Steering Knuckle Assembly, Includes Key Nos. 23, 27, 31	1			Right Hand , Includes Key Nos. 34-37	
	58900-073	Above 200" Wheel Base				Tie Rod End, Includes Key No. 32, <i>See Selection Guide on Page 17</i>	
	58900-075	Below 200" Wheel Base		33		Left Hand	1
18		Right Hand Lower Steering Knuckle Assembly, Includes Key Nos. 23, 27, 31	1	34		Right Hand	1
	58900-074	Above 200" Wheel Base		35		**7/8" Castle Nut	2
	58900-076	Below 200" Wheel Base		36	22962-007	7/8" Flat Washer	2
19		Left Hand Upper Steering Knuckle Assembly, Includes Key Nos. 23, 27	1	37	17800-004	Tie Rod Nut Cotter Pin	2
	60903-056	LoneStar Model		38		Top Axle Wrap	2
	60903-042	ProStar • 9200/9400 Models		a	59952-023	LoneStar • TranStar • 9200/9400/8600 Models	
	60903-044	TranStar • 8600 Models		b	59952-032	ProStar Model	
				39	64722-003	Bottom Axle Wrap	2
				40	65757-000	Top Axle Wrap Liner	2
				41	59845-000	Bottom Axle Wrap Liner	2
				42	64578-000	1½"-12 UNF Spindle Nut	2

NOTES: * Not supplied by Hendrickson, used for reference only. Hendrickson is not responsible for components supplied by the vehicle manufacturer. For assistance with maintenance and rebuild instructions on these components see vehicle manufacturer.

** Item included in kit/assembly only, part not sold separately.

International Truck New Engine Configuration (NEC) with STEERTEK Axle

Vehicles built between September 2006 and November 2010 – 9200 / 9400 Models

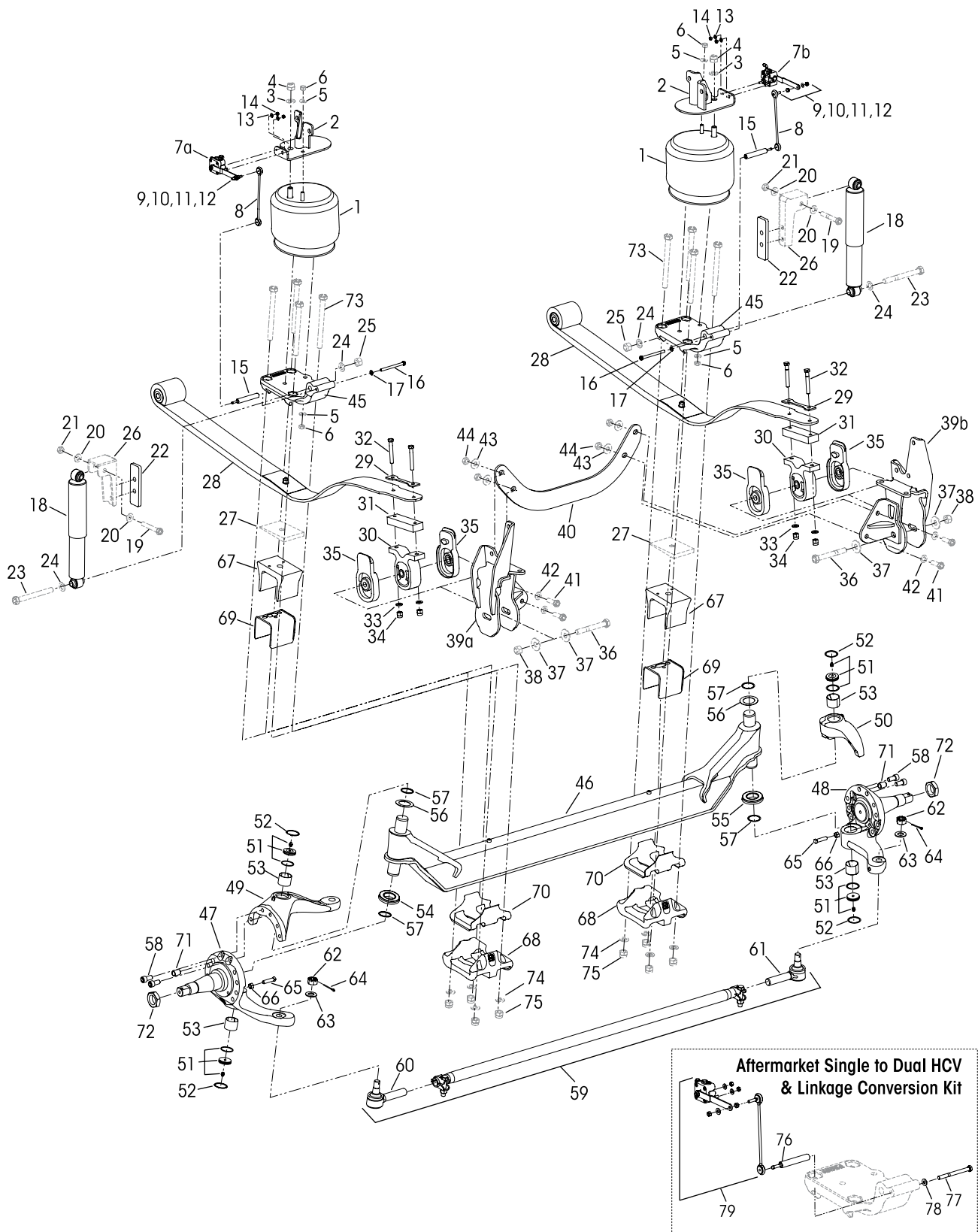




			VEHICLE				VEHICLE
KEY NO.	PART NO.	DESCRIPTION	QTY.	KEY NO.	PART NO.	DESCRIPTION	QTY.
1	65790-002L	Air Spring	2	40		Right Hand Lower Steering Knuckle Assembly Includes Key Nos. 45, 49, 63	
2		Air Spring Bracket			58900-074	Above 200" Wheel Base	1
a	66775-000	Left Hand	1		58900-076	Below 200" Wheel Base	
b	66776-000	Right Hand	1			Upper Steering Knuckle Assembly Includes Key Nos. 45, 49	
3		*3/4" Flat Washer	2	41	60903-041	Left Hand	1
4		*3/4"-16 UNF Nylocknut	2	42	60904-034	Right Hand	1
5		*1/2" Hardened Washer	4			Kingpin Bushing and Bearing Service Kits Axle Set , Includes Kit Nos. 60961-009 & -039 Left Hand with Composite Thrust Bearing , Includes Key Nos. 43-46, 48-50, Loctite Right Hand with Roller Thrust Bearing , Includes Key Nos. 43-45, 47-50, Loctite	
6		*1/2"-13 UNC Nylocknut	4		60961-040		
		HCV & Linkage Assembly			60961-009		
	59427-013L	Left Hand, Includes Key Nos. 7a-14		43	59156-000	Grease Cap Assembly	4
	59427-014L	Right Hand, Includes Key Nos. 7b-14		44	58937-000	Retaining Ring	4
7		*****Height Control Valve		45	58909-000	Kingpin Bushing	4
a	59935-011L	Left Hand	1			Thrust Bearing Service Kits Axle Set , Includes Kit Nos. 60961-041 & -042 Left Hand Composite Thrust Bearing , Includes Key Nos. 46, 48-50 and Loctite Right Hand Roller Thrust Bearing , Includes Key Nos. 47-50 and Loctite	
b	59935-018L	Right Hand	1	46	59828-000	Left Hand Composite Thrust Bearing	1
8	59428-004	HCV Linkage	2	47	64256-000L	Right Hand Roller Thrust Bearing	1
9	59169-000	5/16"-18 UNC Stud	2	48		Kingpin Shim	As Req.
10	17491-011	5/16"-18 UNC Nut	2		60259-001X	0.005" Thickness (Pack of 4)	
11	22962-029	5/16" Hardened Washer	2		60259-002	0.047" Thickness	
12	59016-000	5/16"-18 UNC Locknut	2	49	58910-001	Kingpin Seal, <i>Replaces 58910-000</i>	4
13	22962-028	1/4" Hardened Washer	4	50	60236-001	5/8"-11 UNC Socket Head Cap Screw	4
14	49983-000	1/4"-20 UNC Locknut	4	Not Shown	60937-000	Loctite® (Red) Compound Tube	1
	60961-154	Lower Link Mount Service Kit, One Side , Includes Key Nos. 15-17			60961-069	Stop Bolt Service Kit, One Side , Includes Key Nos. 51-52	
15	59429-003	Lower Link Mount	2	51	60238-001	1/2"-13 UNC Square Head Bolt	2
16	58035-002	3/8"-16 UNC x 1.38" Hex Bolt	2	52	60240-000	1/2"-13 UNC Hex Jam Nut	2
17	22962-015	3/8" Flat Washer	2	53		Tie Rod Assembly, Includes Key Nos. 54-56 <i>See Selection Guide on Page 17</i>	1
18		Shock Absorber	2			Tie Rod End Service Kits , <i>See Selection Guide on Page 17</i> Axle Set , Includes Left Hand & Right Hand Kits Left Hand , Includes Key Nos. 54, 56-58 Right Hand , Includes Key Nos. 55-58 Tie Rod End, Includes Key No. 56, <i>See Selection Guide on Page 17</i>	
	65992-001L	Sleeper		54		Left Hand	1
	65992-002L	Day Cab		55		Right Hand	1
19		*3/4"-10 UNC x 5" Lower Shock Bolt	2	56		**7/8" Castle Nut	2
20		*3/4" Lower Shock Hardened Washer	4	57	22962-007	7/8" Flat Washer	2
21		*3/4"-10 UNC Lower Shock Hex Locknut	2	58	17800-004	Tie Rod Nut Cotter Pin	2
22	66420-000	Leaf Spring Assembly Includes Spring Eye Bushing	2	59	59952-023	Top Axle Wrap	2
	60961-158	Rear Spring Mount Service Kit, One Side , Includes Key Nos. 23-27		60	64722-003	Bottom Axle Wrap	2
23	58920-000	Spring End Plate	2	61	65757-000	Top Axle Wrap Liner	2
24		**Rear Spring Mount	2	62	59845-000	Bottom Axle Wrap Liner	2
25	30970-001	1/2"-20 UNF x 3 1/2" Bolt	4	63	64246-000	ABS Sensor Sleeve	2
26	22962-014	1/2" Hardened Washer	4	64	64578-000	1 1/2"-12 UNF Spindle Nut	2
27	17700-034	1/2"-20 UNF Nylocknut	4	65		*3/4"-10 UNC x 8 1/2" Hex Bolt	8
28	66779-000	Thrust Washer	4	66		*3/4" Flat Washer	8
29		*3/4"-10 UNC x 6 1/2" Hex Bolt	2	67		*3/4"-10 UNC-2B Nylocknut	8
30		*3/4" Flat Washer	4		60961-155	Aftermarket Dual HCV & Linkage Conversion Kit Includes key Nos. 68-71	
31		*3/4"-10 UNC Locknut	2	68	59429-003	Lower Link Mount	1
32		Rear Hanger		69	58035-002	3/8"-16 UNC x 1 3/8" Hex Bolt	1
a	66382-001	Left Hand	1	70	22962-015	3/8" Flat Washer	1
b	66382-002	Right Hand	1	71	59427-013L	Left Hand HCV & Linkage Assembly	1
33	66419-000	Belly Band	1				
34		*5/8"-11 UNC x 2" Hex Bolt	4				
35		*5/8" Hardened Washer - O.D. 1 3/4"	8				
36		*5/8"-11 UNC Hex Locknut	4				
37		Top Pad					
a	68318-001	Left Hand	1				
b	68318-002	Right Hand	1				
	70952-0XX	STEERTEK Axle Assembly , Includes Key Nos. 38-64, <i>Contact Hendrickson Truck Parts for part number</i>	1				
38	64905-001	Axle & Kingpin Assembly	1				
39		Left Hand Lower Steering Knuckle Assembly Includes Key Nos. 45, 49, 63					
	58900-073	Above 200" Wheel Base	1				
	58900-075	Below 200" Wheel Base					

Prior to International Truck New Engine Configuration (PEC) with STEERTEK Axle

Vehicles built prior to September 2006 – 9200 / 9400 Models





				VEHICLE					VEHICLE
KEY NO.	PART NO.	DESCRIPTION	QTY.		KEY NO.	PART NO.	DESCRIPTION	QTY.	
1	65790-002L	Air Spring	2		47		Left Hand Lower Steering Knuckle Assembly Includes Key Nos. 53, 57, 71		
2		*****Air Spring Bracket, <i>See Replacement Guide on Page 16</i>	2			58900-071	250 Ackermann - Long Wheel Base	1	
3		*3/4" Flat Washer	2			58900-073	200 Ackermann - Short Wheel Base		
4		*3/4"-16 UNC Nylocknut	2		48		Right Hand Lower Steering Knuckle Assembly Includes Key Nos. 53, 57, 71		
5		*1/2" Hardened Washer	2			58900-072	250 Ackermann - Long Wheel Base	1	
6		*1/2"-13 UNC Nylocknut	2			58900-074	200 Ackermann - Short Wheel Base		
		HCV & Linkage Assembly					Upper Steering Knuckle Assembly Includes Key Nos. 53, 57		
	59427-013L	Left Hand, If equipped, Includes Key Nos. 7a-14	1		49	60903-041	Left Hand	1	
	59427-014L	Right Hand, Includes Key Nos. 7b-14	1		50	60904-034	Right Hand	1	
7		*****Height Control Valve					Kingpin Bushing and Bearing Service Kits		
a	59935-011L	Left Hand, If equipped	1			60961-040	Axle Set , Includes Kit Nos. 60961-009 & -039		
b	59935-018L	Right Hand, <i>Replaces 59935-010</i>	1			60961-009	Left Hand with Composite Thrust Bearing , Includes Key Nos. 51-54, 56-58, Loctite		
8	59428-004	HCV Linkage	2			60961-039	Right Hand with Roller Thrust Bearing , Includes Key Nos. 51-53, 55-58, Loctite		
9	59169-000	5/16"-18 UNC Stud	2		51	59156-000	Grease Cap Assembly	4	
10	17491-011	5/16"-18 UNC Nut	2		52	58937-000	Retaining Ring	4	
11	22962-029	5/16" Hardened Washer	2		53	58909-000	Kingpin Bushing	4	
12	59016-000	5/16"-18 UNC Locknut	2				Thrust Bearing Service Kits		
13	22962-028	1/4" Hardened Washer	4			60961-043	Axle Set , Includes Kit Nos. 60961-041 & -042		
14	49983-000	1/4"-20 UNC Locknut	4			60961-041	Left Hand Composite Thrust Bearing , Includes Key Nos. 54, 56-58 and Loctite		
	60961-071	Lower Link Mount Service Kit, One Side , Includes Key Nos. 15-17				60961-042	Right Hand Roller Thrust Bearing , Includes Key Nos. 55-58 and Loctite		
15	59429-002	Lower Link Mount	2		54	59828-000	Left Hand Composite Thrust Bearing,	1	
16	58035-006	3/8"-16 UNC x 3 1/2" Hex Bolt	2		55	64256-000L	Right Hand Roller Thrust Bearing	1	
17	22962-015	3/8" Flat Washer	2		56		Kingpin Shim	As Req.	
18		Shock Absorber	2			60259-001X	0.005" Thickness (Pack of 4)		
	65992-001L	Sleeper				60259-002	0.047" Thickness		
	65992-002L	Day Cab			57	58910-001	Kingpin Seal, <i>Replaces 58910-000</i>	4	
19		*5/8"-11 UNC x 4" Upper Shock Bolt	2		58	60236-001	5/8"-11 UNC Socket Head Cap Screw	4	
20		*5/8" Upper Shock Washer	4		Not Shown	60937-000	Loctite (Red) Compound Tube	1	
21		*5/8"-11 UNC Upper Shock Locknut	2		59		Tie Rod Assembly, Includes Key Nos. 60-62 <i>See Selection Guide on Page 17</i>	1	
22	59946-001	Shock Spacer	2				Tie Rod End Service Kits, See Selection Guide on Page 17		
23		*3/4"-10 UNC x 8" Lower Shock Bolt	2				Axle Set , Includes Left Hand & Right Hand Kits		
24		*3/4" Lower Shock Hardened Washer	4				Left Hand , Includes Key Nos. 60, 62-64		
25		*3/4"-10 UNC Lower Shock Hex Locknut	2				Right Hand , Includes Key Nos. 61-64		
26		*Shock Bracket	2				Tie Rod End, Includes Key No. 62, <i>See Selection Guide on Page 17</i>		
27		*Caster Wedge	2		60		Left Hand	1	
28		*****Leaf Spring Assembly with Bushing Replace 65771-000 with Kit No. 60961-134, <i>See Replacement Guide on Page 16</i>	2		61		Right Hand	1	
	60961-109	Rear Spring Mount Service Kit (One Side) Includes Key Nos. 29-34			62		**7/8" Castle Nut	2	
29	58920-000	Spring End Plate	2		63	22962-007	7/8" Flat Washer	2	
30	58918-000	Rear Spring Mount	2		64	17800-004	Tie Rod Nut Cotter Pin	2	
31	65772-000	Rear Mount Spacer	2			60961-069	Stop Bolt Service Kit, One Side , Includes Key Nos. 65-66		
32	30970-001	1/2"-20 UNF x 3 1/2" Bolt	4		65	60238-001	1/2"-13 UNC Square Head Bolt	2	
33	22962-014	1/2" Hardened Washer	4		66	60240-000	1/2"-13 UNC Hex Jam Nut	2	
34	17700-034	1/2"-20 UNF Nylocknut	4		67	59952-023	Top Axle Wrap	2	
35	65856-000	Thrust Washer	4		68	64722-003	Bottom Axle Wrap	2	
36		*3/4"-10 UNC x 6" Hex Bolt	2		69	65757-000	Top Axle Wrap Liner	2	
37		*3/4" Flat Washer	4		70	59845-000	Bottom Axle Wrap Liner	2	
38		*3/4"-10 UNC Locknut	2		71	64246-000	ABS Sensor Sleeve	2	
39		Rear Hanger			72	64578-000	1 1/2"-12 UNF Spindle Nut	2	
a	68317-001	Left Hand	1		73		*3/4"-10 UNC x 8 1/2" Hex Bolt	8	
b	68317-002	Right Hand	1		74		*3/4" Flat Washer	8	
40	66019-000	Belly Band (For Service Only)	1		75		*3/4"-10 UNC-2B Nylocknut	8	
41		*5/8"-11 UNC x 2" Hex Bolt	4			60961-116	Aftermarket Dual HCV & Linkage Conversion Kit Includes key Nos. 76-79		
42		*5/8" Hardened Washer - O.D. 1.3"	4		76	59429-002	Lower Link Mount	1	
43		*5/8" Hardened Washer - O.D. 1.75"	4		77	58035-006	3/8"-16 UNC x 3 1/2" Hex Bolt	1	
44		*5/8"-11 UNC Hex Locknut	4		78	22962-015	3/8" Flat Washer	1	
45		*****Top Pad, <i>See Replacement Guide on Page 16</i>	2		79	59427-013L	Left Hand HCV & Linkage Assembly	1	
	70952-0XX	STEERTEK Axle Assembly , Includes Key Nos. 46-72, <i>Contact Hendrickson Truck Parts for part number</i>	1						
46	64905-001	Axle & Kingpin Assembly	1						



AIRTEK • Prior to New Engine Configuration (*PEC) Component Replacement Guide

Description	Current Part No. (*PEC)	Replacement Part Number	Comments
Air Spring Bracket	64583-000 (LH) 64586-000 (RH)	**66775-000 (LH) **66776-000 (RH)	Requires the replacement of both air spring brackets, both top pads, lower link mount(s) with the **NEC design and the elimination of both upper shock bracket spacers. Contact Hendrickson Engineering for more information.
Lower Link Mount	59429-002	59429-002	Will continue to be serviced with the *PEC design in the aftermarket.
Spacer for Upper Shock Bracket	59946-001	See Comments	No longer required when the top pad is replaced with the **NEC design.
Leaf Spring Assembly	65771-000	66420-000	Requires the replacement of both leaf springs along with the removal of the caster wedge (if equipped), replace with Service Kit 60961-134, see below for contents.
Top Pad	64580-000	**68318-001 (LH) **68318-002 (RH)	Requires the replacement of both top pads, both air spring brackets, lower link mount(s) with the **NEC design and removal of both upper shock bracket spacers. Contact Hendrickson Engineering for more information.
<p>*PEC: Prior to New Engine Configuration, vehicles built prior to 9/2006 **NEC: New Engine Configuration, vehicles built after 9/2006</p>			

AIRTEK *PEC Replacement Service Kit Contents

PART NO.	DESCRIPTION	QTY.
60961-134	Leaf Spring Assembly Replacement Kit, Axle Set	
66420-000	Leaf Spring Assembly, Pre-assembled with Spring End Plate, Thrust washers, Rear Spring Mount, Rear Spring Mount Spacer, and Fasteners	
58917-016	3/4"-10 UNC x 8 1/2" Hex Bolt (Clamp Group)	10
22962-001	3/4" Flat Washer	8
17700-033	3/4"-10 UNC-2B Nylocknut	8
58917-008	3/4"-10 UNC x 6" Hex Bolt (Rear Hanger)	2
22962-033	3/4" Flat Washer	8
49842-000	3/4"-10 UNC-2B Nylocknut	4

NOTES:

- * Not supplied by Hendrickson, used for reference only. Hendrickson is not responsible for components supplied by the vehicle manufacturer. For assistance with maintenance and rebuild instructions on these components see vehicle manufacturer.
- ** Item included in kit/assembly only, part not sold separately.
- *** Axle spring seats come assembled with the axle beam and are not serviceable.
- **** Effective January 2019, vehicles equipped with Hendrickson STEERTEK NXT/STEERTEK axle will be installed with a left hand **composite** bearing and a right hand **roller** bearing configuration to replace the previous roller/roller bearing configuration for production and aftermarket.
- ***** The recommendation of the vehicle manufacturer is that dual height control valves are only to be installed on the front suspension when the rear suspension is equipped with a single height control valve system. This arrangement is best suited to keep the vehicle level versus having dual height control systems on both the front and rear suspensions.
- ***** No longer available for service, see Replacement Guide on Page 16.

Hendrickson **AIRTEK Ride Height Gauge for International Truck Vehicles** Literature number 45745-251 can be obtained online at www.hendrickson-intl.com/Litform

■ Tie Rod Selection Guide

		Axle Model	Wheel Base	KPI	Tie Rod Assembly Part Number	Tie Rod End Part Number	Tie Rod End Service Kit No.	
12K - 12.35K	1 1/4" Threads	Vehicles built after January 2014						
		STEERTEK NXT	<200"	69.0"	76877-004	70995-001 (LH) 70995-002 (RH)	60961-734 (Axle Set) 60961-736 (LH) 60961-741 (RH)	
			>200"		76877-005			
			<200"	70.8"	76877-005			
			>200"		76877-002			
		Vehicles built between August 2011 and January 2014						Tie Rod Assembly Replacement Part No.
		STEERTEK NXT STEERTEK	<200"	69.0"	60239-004	♦ Tie rod end kits are no longer available for these assembly numbers, requires complete tie rod assembly replacement.	76877-004	
			>200"		60239-005		76877-005	
	<200"		70.8"	60239-005	76877-005			
	>200"			60239-002	76877-002			
	Vehicles built prior to August 2011						Tie Rod Assembly Replacement Part No.	
	STEERTEK	<200"	69.0"	60239-004	♦ Tie rod end kits are no longer available for these assembly numbers, requires complete tie rod assembly replacement.	76877-004		
		>200"		60239-005		76877-005		
		<200"	70.8"	60239-001		76877-001		
		>200"		60239-002		76877-002		

13.2K - 14.6K	1 1/8" Threads	Vehicles built after January 2014					
		STEERTEK NXT	<200"	69.0"	76879-001	76876-001 (LH) 76876-002 (RH)	60961-735 (Axle Set) 60961-742 (LH) 60961-743 (RH)
			>200"		76879-001		
			<200"	70.8"	76879-001		
			>200"		76879-002		
		Vehicles built prior to January 2014					
		STEERTEK NXT STEERTEK	<200"	69.0"	64006-001	64002-001 (LH) 64002-002 (RH)	60961-011 (Axle Set) 60961-027 (LH) 60961-028 (RH)
			>200"		64006-001		
<200"	70.8"		64006-001				
>200"			64006-002				

NOTE: ♦ Hendrickson supplies various tie rod assemblies. Locate the tie rod assembly part number on the tie rod tube to help determine the tie rod end kit or complete tie rod assembly replacement needed for service as shown in this Tie Rod Selection Guide.

■ Special Tool

KINGPIN BUSHING TOOL – ADJUSTABLE STRAIGHT FLUTE REAMER

The dimension of cutting diameter must
facilitate a range of 1.802" – 1.812"



This is a general parts list to provide directional information. Components may vary by model. Questions in regards to parts, contact Hendrickson Truck Parts at 1.866.755.5968 (Toll-free U.S. and Canada), 630.910.2800 (Outside U.S. and Canada) or e-mail: truckparts@hendrickson-intl.com.
Actual product performance may vary depending upon vehicle configuration, operation, service and other factors.
All applications must comply with applicable Hendrickson specifications and must be approved by the respective vehicle manufacturer with the vehicle in its original, as-built configuration.
Contact Hendrickson for additional details regarding specifications, applications, capacities, and operation, service and maintenance instructions.

Call Hendrickson at 1.866.755.5968 (toll-free) or 1.630.910.2800 for additional information.



www.hendrickson-intl.com

TRUCK COMMERCIAL VEHICLE SYSTEMS
800 South Frontage Road
Woodridge, IL 60517-4904 USA
1.866.755.5968 (Toll-free U.S. and Canada)
1.630.910.2800 (Outside U.S. and Canada)
Fax 1.630.910.2899

SP-182 Rev I 08-19

© 2006-2019 Hendrickson USA, L.L.C. All Rights Reserved. All trademarks shown are owned by Hendrickson USA, L.L.C., or one of the affiliates, in one or more countries.
Information contained in this literature was accurate at the time of publication. Product changes may have been made after the copyright date that are not reflected.

Printed in United States of America