

H PARTS LIST

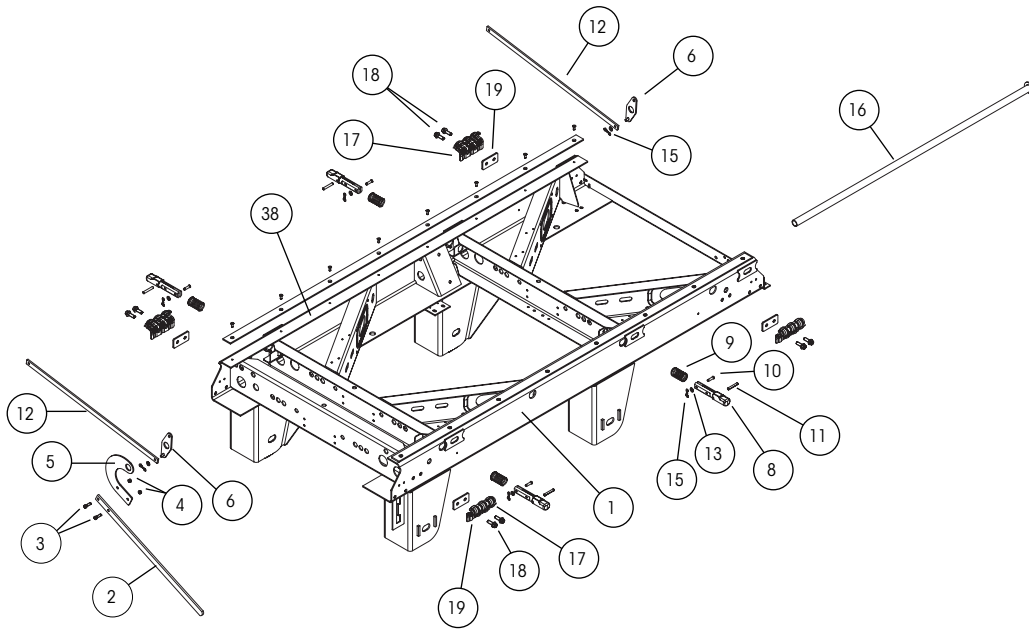
HK190 / 230 (K-2® SLIDER
WITH HT SUSPENSIONS)

LIT NO: L536

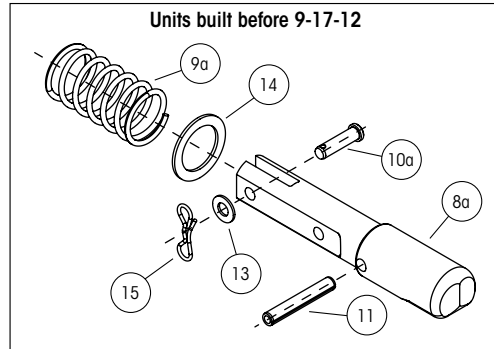
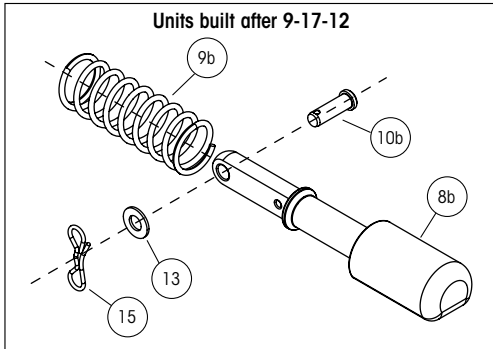
DATE: June 2019

REVISION: F

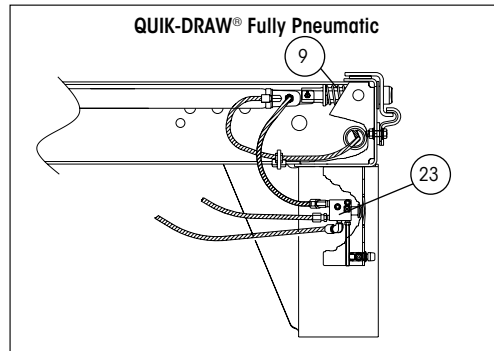
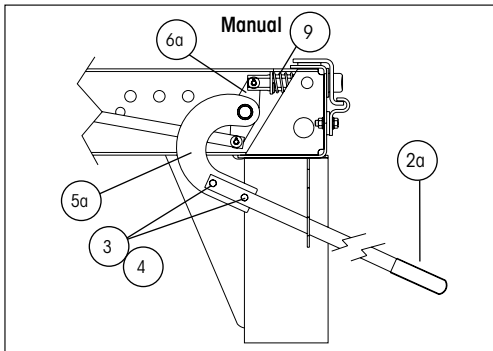




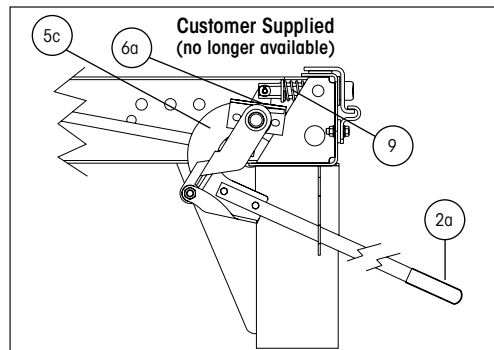
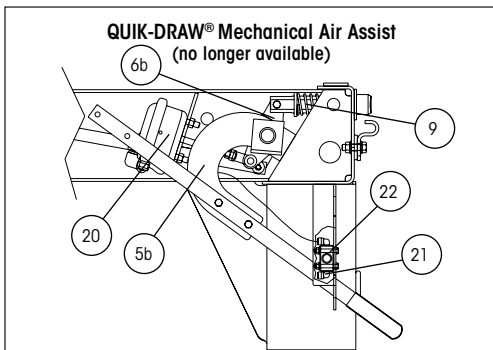
SLIDER PINS



CURRENT RELEASE MECHANISMS



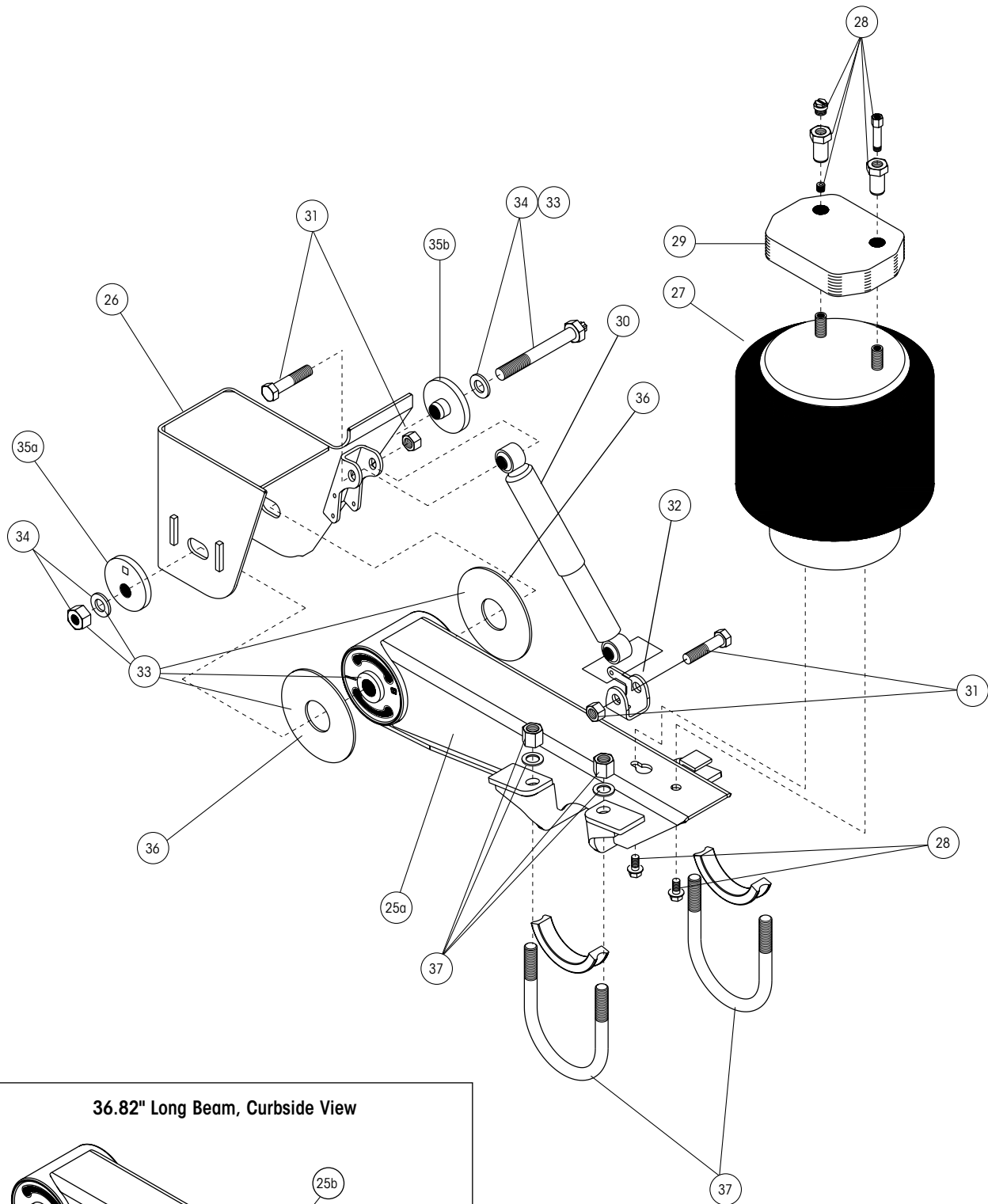
NO LONGER AVAILABLE ON PRODUCTION MODELS OR BOX REPLACEMENTS — PARTS FOR THESE MECHANISMS ARE STILL AVAILABLE



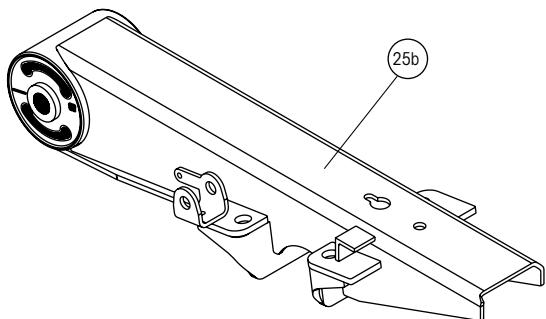


HK190T / 230 SLIDER BOX COMPONENTS

ITEM	DESCRIPTION	PART NO.	SYSTEM QTY.	NOTE
1	AFTERMARKET BOX REPLACEMENT	AMBOX.###	1	Please contact Hendrickson for assistance
2	HANDLE			
	2a Manual and customer supplied	S-25592	1	Handle and grip assembly
3	HANDLE BOLT	SA-1100-10	2	3/8"-16 x 1 1/4" hex head bolt, grade 5
4	HANDLE NUT	SA-9000-5	2	3/8"-16 lock nut, grade B
5	HANDLE MOUNT			
	5a Manual	C-21275	1	
	5b QUIK-DRAW® mechanical air assist	C-23231	1	
	5c Customer supplied	S-23534	1	Includes crank arm bolt kit
6	CRANK ARM WELDMENT			
	6a Manual and customer supplied	B-33010	2	For front and rear of slider box
	6b Mechanical air assist	B-33010	1	For rear of slider box
7	CRANK ARM BOLT KIT (not shown)	A-22041	1	Includes bolt, flat washer, lock washer and nut
8a	LOCKING PIN (Units built before 9-17-12)			
	1.375" diameter pin	S-28290	4	4" Body rail hole spacing (TTMA)
	1.375" diameter pin	S-28290	4	6" Body rail hole spacing
	1.625" diameter pin	S-28289	4	4" Body rail hole spacing
8b	LOCKING PIN (Units built after 9-17-12)			
	1.375" diameter pin	S-32389	4	4" Body rail hole spacing (TTMA)
	1.375" diameter pin	S-32389	4	6" Body rail hole spacing
	1.625" diameter pin	S-32388		4" Body rail hole spacing
9a	LOCKING PIN SPRING (Units built before 9-17-12)			
	42" box with manual or mechanical air assist	B-28930	4	3.25" Spring
	48" box with manual, QUIK-DRAW or mechanical air assist	B-28930	4	3.25" Spring
	42" box with QUIK-DRAW	B-22000	4	3.8" Spring
	42" and 48" box with customer supplied spring mechanism	B-22000	4	3.8" Spring
9b	LOCKING PIN SPRING (Units built after 9-17-12)			
	42", 48" and 54" box with QUIK-DRAW	B-32500	4	
10a	CLEVIS PIN (Units built before 9-17-12)	SA-5200-6	4	3/8" x 1 3/8"
10b	CLEVIS PIN (Units built after 9-17-12)	SA-5200-8	4	3/8" x 1 1/5"
11	SPRING PIN	SA-8100-4	4	3/8" x 2 1/2" roll pin
12	LOCKING PIN LINK			
	12a 42" box	S-32967-1	2	
	12b 48" box	S-32967-2	2	
	12c 54" box	S-32967-3	2	
13	LOCKING PIN WASHER	SA-1500-2	6	3/8" I.D. flat washer
14	PIN WASHER	S-30641	1	
15	LOCKING PIN LINK COTTER PIN	SA-1700-12	6	3/32" x 1" cotter pin
16	PIPE WELDMENT			
	16a Manual and customer supplied	S-21433	1	
	16b QUIK-DRAW (chamber actuated)	S-21433-1	1	
17	BODY RAIL CLIP			
	17a 3.4" clip height	S-24459	4	Use with 4" hole centers and 1.625" locking pin
	17b 3.8" clip height	S-24460	4	Use with 6" hole centers and 1.375" locking pin
	17c Universal 2" spacer - 4" or 6" height	S-22366	4	Hole centers measure 2"
18	BODY RAIL BOLT	SA-6900-2	8	1/2"-13 x 1 1/2" flanged bolt, grade 8
19	BODY RAIL CLIP SPACER	A-22367	4	Hole centers measure 2"
20	AIR ACTUATOR CHAMBER	A-23039	1	Type 12 modified
21	AIR VALVE	VS-23224	1	Air valve with fittings
22	VALVE CAP	A-22977	1	
23	QUIK-DRAW II VALVE	VS-25224		3-way auto reset valve with fittings
		VS-25223		3-way auto reset valve without fittings



36.82" Long Beam, Curbside View





HK190T / 230 SUSPENSION COMPONENTS

ITEM	DESCRIPTION	PART NO.	SYSTEM QTY.	NOTE
24	VALVE KNOB KIT (not shown)	VS-25849		For old style valve with plastic knob
25	BEAM ASSEMBLY¹			
	25a Front or rear, overall length is 32.65"			
	Roadside	S-20000-1		
	Curbside	S-20000-2		
	25b Rear, overall length is 36.82" (For units with SURELOK®)			
	Roadside	S-21736-1		
	Curbside	S-21736-2		
26	FRAME BRACKET			Contact Hendrickson for assistance
	26a 16" ride height			
	Roadside	S-21291-1	2	
	Curbside	S-21291-2	2	
	26b 16.5" ride height			
	Roadside	D-22386-1	2	
	Curbside	D-22386-2	2	
	26c 17" ride height			
	Roadside	S-21497-1	2	
	Curbside	S-21497-2	2	
	26d 18" ride height			
	Roadside	S-21802-1	2	
	Curbside	S-21802-2	2	
	26e 19" ride height			
	Roadside	D-21803-1	2	
	Curbside	D-21803-1	2	
27	AIR SPRING			
	27a HK190T sliders	S-22045	4	
	27b HK230 sliders	S-22046	4	
28	AIR SPRING MOUNTING KITS			
	28a 16" ride height / no spacer (Per air spring)	S-22907/2	4	Includes (1) 1/4"-18 NPFT plug, (2) 1/2"-13 flanged screw and (2) 3/4"-16 flanged nut
	28b 16 1/2" and 17" ride height / 3/4" Thick spacer (Per air spring)	S-22908/2	4	Includes (1) 1/4"-18 NPFT plug, (2) extension nuts, .65" and (2) 1/2"-13 flanged screw
	28c 18" ride height / 1 7/8" thick spacer (Per air spring)	S-22909/2	4	Includes (1) 1/4"-18 NPFT plug, (1) air fitting, 2.10", (2) extension nuts, 1.73", (2) 1/2"-13 flanged screw and (1) plug
	28d 19" ride height / 3 1/8" thick spacer (Per air spring)	S-22910/2	4	Includes (1) 1/4"-18 NPFT plug, (1) air fitting, 3.10", (2) extension nuts, 2.65", (2) 1/2"-13 flanged screw and (1) plug
29	AIR SPRING SPACER			
	29a 3/4" thick spacer	B-22510-4	4	16 1/2" and 17" ride height
	29b 1 7/8" thick spacer	B-22510-2	4	18" ride height
	29c 3 1/8" thick spacer	B-22510-3	4	19" ride height
30	SHOCK ABSORBER	S-21292	4	
31	SHOCK ABSORBER BOLT KIT	S-20031/2	4	
32	LOWER SHOCK CLEVIS	S-20069	4	
33	TRI-FUNCTIONAL® BUSHING KIT²	S-24691	4	Includes bushing, pivot bolt kit, wear pads and lube

¹Measure beam assembly before ordering. Some models have 32.65" beam assemblies for both the front and rear; others have 32.65" beam assemblies on the front and 36.82" beam assemblies on the rear. Units with 36.82" beam assemblies on the rear are designed to accommodate SURELOK®. Units with the 32.65" beam assemblies on the rear require the addition of a weld-on beam extension to accommodate SURELOK.



²Bushing tool S-21307 is required to properly re-bush the suspension.

ITEM	DESCRIPTION	PART NO.	QTY.	NOTE
34	QUIK-ALIGN® Pivot Bolt Kit (Per Hanger)	S-24679	4	Includes (1) 10" shear type bolt, (1) torque heavy hex nut and (2) hardened steel washers
35	ALIGNMENT COLLARS			
	35a Eccentric (Outer)	S-20925	4	Pivot bolt hole is offset from center of collar
	35b Concentric (Inner)	S-20924	4	Pivot bolt hole is in center of collar
36	BUSHING TUBE SPACERS	S-21099	8	
37	U-BOLT KIT	S-21140		Order S-21140/4 for a single U-Bolt, nut and washer. Kit includes: (4) U-Bolt, cornered radius, (8) nuts, and (8) washers
38	SLIDER WEAR PAD KIT	S-14342-3	2	Includes (1) slider wear pad and (8) screws



HK190T / 230 SUSPENSION COMPONENTS

NOTES:

Lined area for notes with horizontal ruling lines.

*Actual product performance may vary depending upon vehicle configuration, operation, service and other factors.
All applications must comply with applicable Hendrickson specifications and must be approved by the respective vehicle manufacturer with the vehicle in its original, as-built configuration.
Contact Hendrickson for additional details regarding specifications, applications, capacities, and operation, service and maintenance instructions.*

Call Hendrickson at 330.489.0045 or 866.RIDEAIR (743.3247) for additional information.



www.hendrickson-intl.com

TRAILER COMMERCIAL VEHICLE SYSTEMS

2070 Industrial Place SE
Canton, OH 44707-2641 USA
866.RIDEAIR (743.3247)
330.489.0045 • Fax 800.696.4416

Hendrickson Canada

250 Chrysler Drive, Unit #3
Brampton, ON Canada L6S 6B6
800.668.5360
905.789.1030 • Fax 905.789.1033

Hendrickson Mexicana

Circuito El Marqués Sur #29
Parque Industrial El Marqués
Pob. El Colorado, Municipio El Marqués,
Querétaro, México C.P. 76246
+52 (442) 296.3600 • Fax +52 (442) 296.3601

L536 Rev F 06-19

© 1998 – 2019 Hendrickson USA, L.L.C. All Rights Reserved. All trademarks shown are owned by Hendrickson USA, L.L.C., or one of its affiliates, in one or more countries.
Information contained in this literature was accurate at the time of publication. Product changes may have been made after the copyright date that are not reflected.

Printed in United States of America