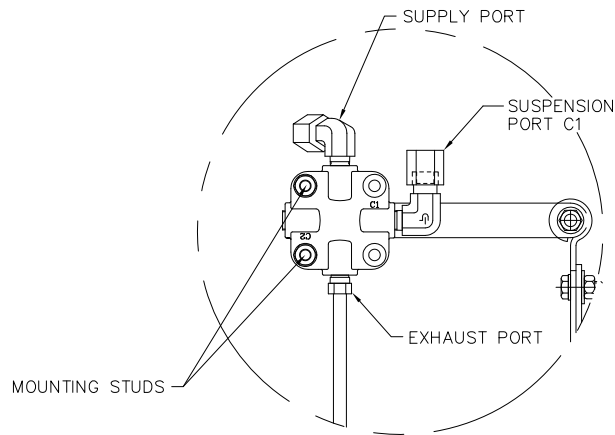
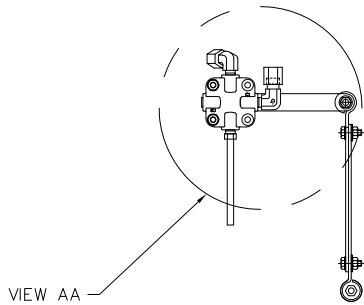
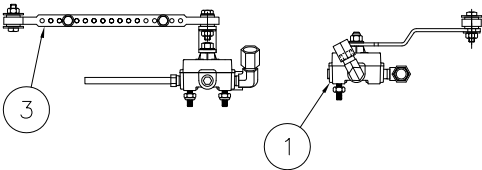
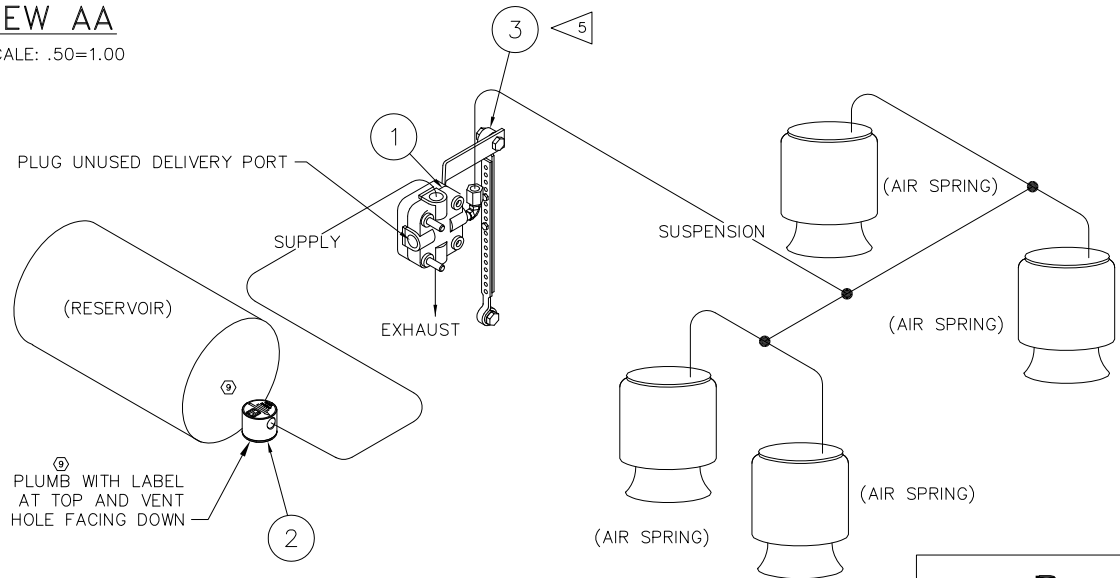


This Print remains the property of Hendrickson. All information contained thereon is confidential. It is loaned, subject to return on demand and on express condition that it is not to be copied or used directly or indirectly for any purpose other than the purpose for which it has been loaned to you.



VIEW AA

SCALE: .50=1.00



BILL OF MATERIALS				
HCV WITHOUT DUMP			AKH-134-3	AKH-134B-3
		REVISION	8	7
ITEM	PART NO.	DESCRIPTION	QTY.	QTY.
1	A-28648	HCV - VALVE ONLY	1	1
2	B-38941	PRESSURE PROTECTION VALVE	1	-
3	A-14187	LINK ASSEMBLY - BOLTED	1	1
*4	L-668	INSTALLATION INSTRUCTIONS	1	1
*5	DWG C-24789	NON DELAY HCV KIT FOR HT & HS SUSPENSIONS	1	1
*6	A-29870	HCV SUB-KIT (#1)	1	1
* NOT SHOWN			WEIGHT:	1.60 1.43

NOTES:

- DO NOT ADD LUBRICATION TO AIR SYSTEM.
- ALL CONNECTIONS MUST BE LEAK PROOF.
- AVOID BENDS IN AIR LINES.
- AIR LINE FITTINGS AND LINES TO BE FURNISHED BY INSTALLER. 3/8" O.D. POLYIMIDE TUBING RECOMMENDED.
- TRIM & BOLT LINKS AS REQ'D TO HOLD HEIGHT CONTROL VALVE IN NEUTRAL POSITION WHEN SUSPENSION IS AT RIDE HEIGHT.
- DO NOT OVER TIGHTEN LINK MOUNTING BOLTS. THE LINK SHOULD PIVOT FREELY ABOUT THE BOLT. THE LINK, WHEN PROPERLY INSTALLED, SHOULD APPEAR VERTICAL WHEN VIEWING IT FROM THE FRONT OF THE SUSPENSION.
- TO MAKE FINE ADJUSTMENTS IN RIDE HEIGHT LOOSEN MOUNTING NUTS AND ROTATE VALVE BODY.
- USE AKH-227 HEIGHT CONTROL VALVE KIT FOR T MODEL SUSPENSIONS.
- ALL ITEMS SHIPPED UNASSEMBLED. FITTINGS, NUTS AND BOLTS TO BE PLACED IN A PLASTIC BAG.

OPERATION:

VALVE ARM HORIZONTAL

FRAME IS AT PRESET HEIGHT
NO AIR FLOW OCCURRING.

VALVE ARM DOWN

FRAME IS HIGH, AIR SPRINGS
ARE EXHAUSTED UNTIL ARM
IS HORIZONTAL.

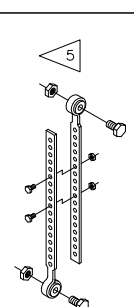
VALVE ARM UP

FRAME IS LOW, AIR SPRINGS
ARE INFLATED UNTIL ARM
IS HORIZONTAL.

FUNCTION:

AUTOMATIC HEIGHT CONTROL.

P
PRODUCTION



H. HENDRICKSON

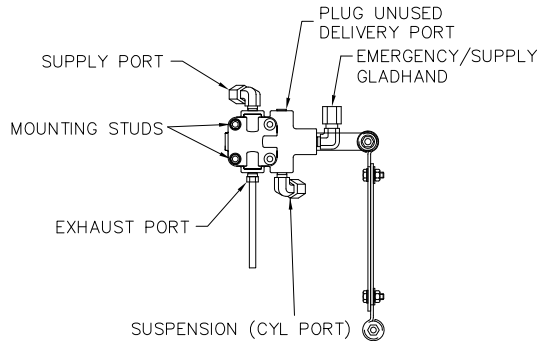
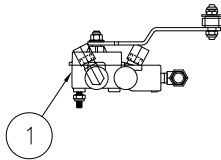
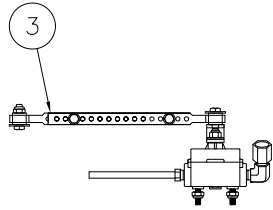
TRAILER COMMERCIAL VEHICLE SYSTEMS
2070 INDUSTRIAL PLACE S.E., CANTON, OH 44707-2600 U.S.A.

UNLESS OTHERWISE NOTED:		9	32402	BLM	02-25-19	DRAWN BY	L. WILSON	DATE	1-27-99
TOLERANCES ARE:		DIMENSIONS ARE:		70	25944	SRP	11-07-16	CHKD BY	2-11-99 G. SHENKLE
.X: ± .1	.XX: ± .06	INCHES		7	16040	PSD	10-12-07	APPD BY	J. CERVANTEZ
.XXX: ± .030	ANGULAR: ± 0.5°	6	15594	CDR	06-05-07				
DIMENSIONS ADHERE TO ANSI Y14.5M-1982		REV.	ECN NO.	BY	DATE				

NON DELAY HCV KIT FOR
HT & HS SUSPENSIONS

SCALE	NTS	PAGE	1 OF 2
(SIZE)		DRAWING No.	
		C-24789	

This Print remains the property of Hendrickson. All information contained thereon is confidential. It is loaned, subject to return on demand and on express condition that it is not to be copied or used directly or indirectly for any purpose other than the purpose for which it has been loaned to you.



NOTES:

1. DO NOT ADD LUBRICATION TO AIR SYSTEM.
2. ALL CONNECTIONS MUST BE LEAK PROOF.
3. AVOID BENDS IN AIR LINES.
4. AIR LINE FITTINGS AND LINES TO BE FURNISHED BY INSTALLER. 3/8" O.D. POLYIMIDE TUBING RECOMMENDED.
5. TRIM & BOLT LINKS AS REQ'D TO HOLD HEIGHT CONTROL VALVE IN NEUTRAL POSITION WHEN SUSPENSION IS AT RIDE HEIGHT.
6. DO NOT OVER TIGHTEN LINK MOUNTING BOLTS. THE LINK SHOULD PIVOT FREELY ABOUT THE BOLT. THE LINK, WHEN PROPERLY INSTALLED, SHOULD APPEAR VERTICAL WHEN VIEWING IT FROM THE FRONT OF THE SUSPENSION.
7. TO MAKE FINE ADJUSTMENTS IN RIDE HEIGHT LOOSEN MOUNTING NUTS AND ROTATE VALVE BODY.
8. USE AKH-227 HEIGHT CONTROL VALVE KIT FOR T MODEL SUSPENSIONS.
9. ALL ITEMS SHIPPED UNASSEMBLED. FITTINGS, NUTS AND BOLTS TO BE PLACED IN A PLASTIC BAG.

OPERATION:

VALVE ARM HORIZONTAL
FRAME IS AT PRESET HEIGHT
NO AIR FLOW OCCURRING.

VALVE ARM DOWN
FRAME IS HIGH, AIR SPRINGS
ARE EXHAUSTED UNTIL ARM
IS HORIZONTAL.

VALVE ARM UP
FRAME IS LOW, AIR SPRINGS
ARE INFLATED UNTIL ARM
IS HORIZONTAL.

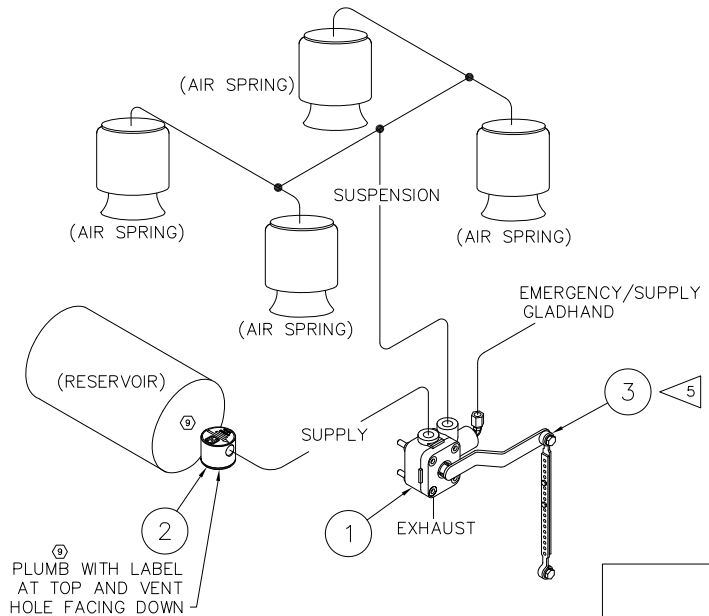
FUNCTION:

AUTOMATIC HEIGHT CONTROL.
AUTOMATIC SUSPENSION DUMP.

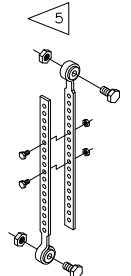
BILL OF MATERIALS			
HCV WITH DUMP			AKHD-195-3
			REVISION 8
ITEM	PART NO.	DESCRIPTION	QTY.
1	A-29393	HCV W/DUMP	1
2	B-38941	PRESSURE PROTECTION VALVE	1
3	A-14187	LINK ASSEMBLY - BOLTED	1
*4	L-373	CAUTION STICKER	1
*5	DWG C-24789	NON DELAY HCV KIT FOR HT & HS SUSPENSIONS	1
*6	L-668	INSTALLATION INSTRUCTIONS	1
*7	A-29871	HCV SUB-KIT (#2)	1
*8	A-29874	HCV SUB-KIT (#5)	1

* NOT SHOWN

WEIGHT: 2.01



P
PRODUCTION



H. HENDRICKSON

TRAILER COMMERCIAL VEHICLE SYSTEMS
2070 INDUSTRIAL PLACE S.E., CANTON, OH 44707-2600 U.S.A.

UNLESS OTHERWISE NOTED:		9	32402	BLM	02-25-19	DRAWN BY	L. WILSON	DATE	1-27-99
TOLERANCES ARE:		70	25944	SRP	11-07-16	CHKD BY	G. SHENKLE		
.X: ± .1	DIMENSIONS ARE:	7	16040	PSD	10-12-07	APPR BY	J. CERVANTEZ		
.XX: ± .06	INCHES	6	15594	CDR	06-05-07				
.XXX: ± .030									
ANGULAR: ± 0.5°									
3RD ANGLE PROJECTION									
DIMENSIONS ADHERE TO ANSI Y14.5M-1982		REV.	ECN NO.	BY	DATE				

NON DELAY HCV KIT FOR
HT & HS SUSPENSIONS

SCALE	NTS	PAGE	2 OF 2
(SIZE)		DRAWING NO.	C-24789