

H PARTS LIST

HAULMAAX® EX 40K • 46K • 52K
Rear Rubber Suspension

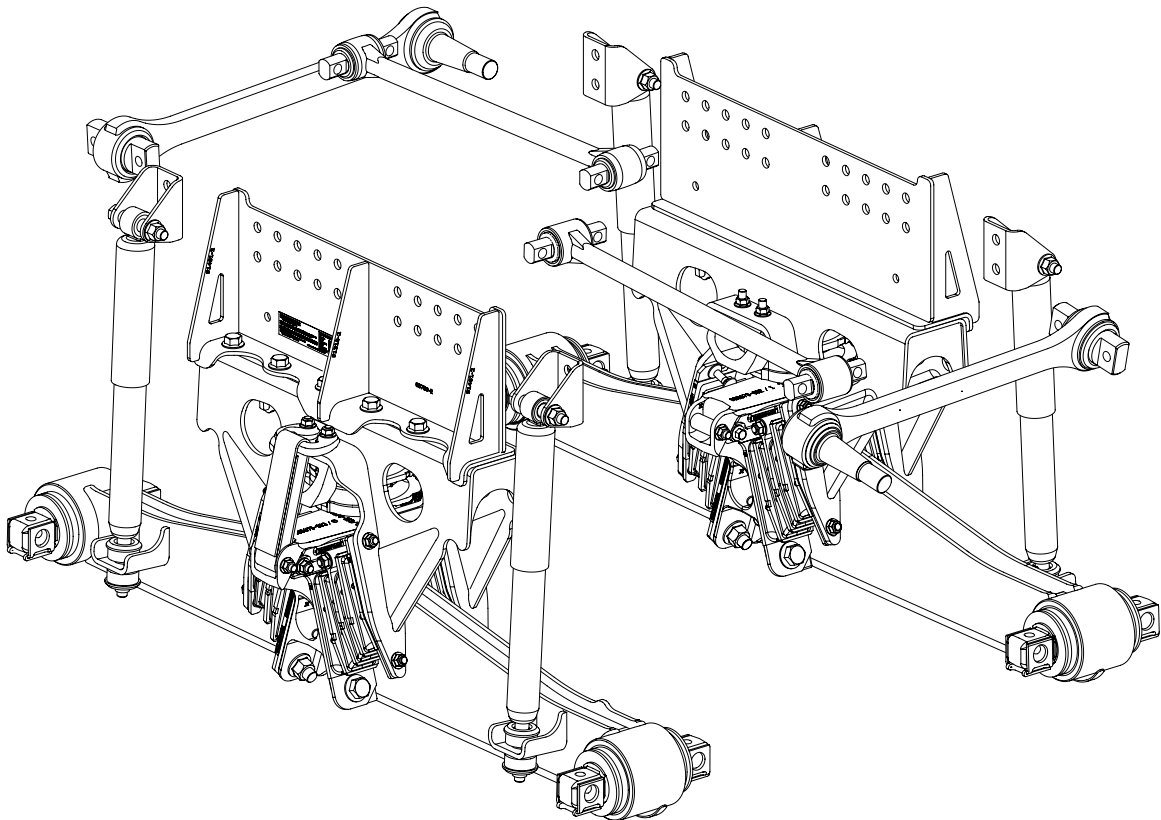
LIT NO: SP-328

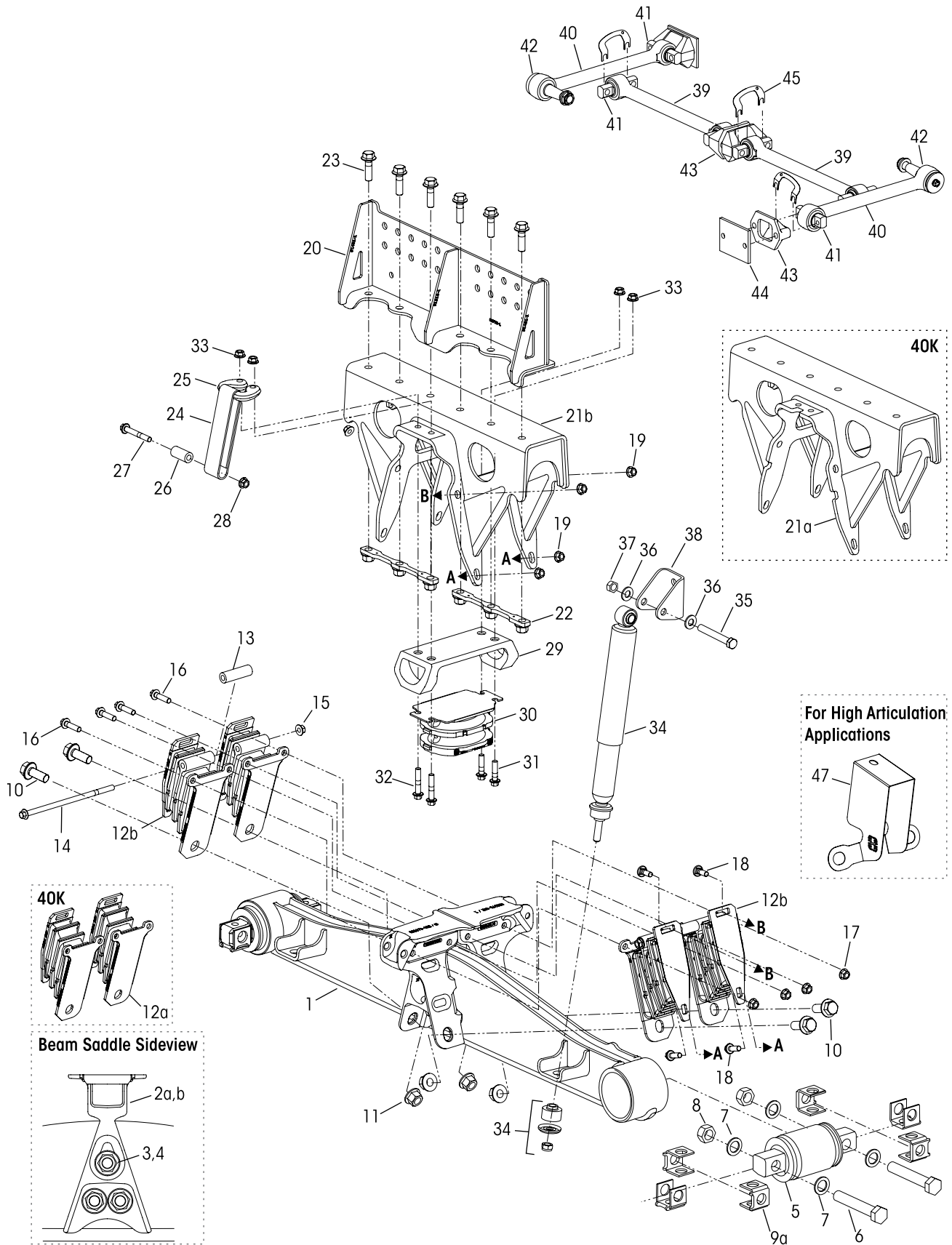
DATE: October 2020

REVISION: C

CONTENTS

DESCRIPTION	PAGE
Parts List	2
Selection Guides	4
Special Tools	8







			VEHICLE				VEHICLE
KEY NO.	PART NO.	DESCRIPTION	QTY.	KEY NO.	PART NO.	DESCRIPTION	QTY.
1		Equalizing Beam Assembly with Beam Saddle, Includes Key No. 5, <i>See Aftermarket Equalizing Beam with Rotatable Bar Pin Selection Guide on Page 5</i>	2			**Rebound Strap Service Kits, See Page 6 One Side, 40K•46K Vehicles Originally equipped with One Strap	
	34013-417	Single Equalizing Beam Saddle Service Kit, Includes Key Nos. 2a, 2b, 3-4			34013-354	One Side, 52K Vehicles Originally equipped with Dual Straps	
2		*Inboard & Outboard Equalizing Beam Saddle	2		34013-363	Aftermarket Dual Strap Enhancement	
a		Inboard		24		*Rebound Strap	
b		Outboard		25		*Rebound Bracket	
3		*M20 x 1.5 x 110 mm Heavy Hex Flange Screw	6	26		*Rebound Spacer	
4		*M20 x 1.5 Flange Nut	6	27		*M12 x 1.75-6G x 90 mm Flange Bolt	
		Bar Pin End Bushing Service Kit, One Wheel End, Includes Key Nos. 5-9a		28		*M12 x 1.75 Flange Nut	2
	34013-088L	Shim Type		29	77234-090	Jounce Stop	2
	34013-188L	Rotating, Shim Type				Single Progressive Load Spring Service Kit Originally equipped with One Strap, Includes Key Nos. 30-33	
5		*Bar Pin End Bushing	4		34013-358	Originally equipped with Dual Straps, Includes Key Nos. 30, 32-33	
	34013-104	Bar Pin End Bushing Fastener Kit, One Wheel End, Includes Key Nos. 6-8		30	80329-070	Progressive Load Spring	2
6		*1"-8 UNC x 6" Hex Bolt	8	31		*M12 x 1.75-6G x 50 mm Flange Bolt	
7		*1" Hardened Washer	16	32		*M12 x 1.75-6G x 65 mm Flange Bolt	
8		*1"-8 UNC Locknut	8	33		*M12 x 1.75 Flange Nut	
9		Bar Pin Shim	8			Single Shock Absorber Service Kit, (if equipped) 1 6/2" Saddle Height, Includes Key Nos. 34a-37 1 7/2" Saddle Height, Includes Key Nos. 34b-37 1 8/4" & 1 8/2" Saddle Height, Includes Key Nos. 34c-37 20 1/2" Saddle Height, Includes Key Nos. 34d-37	
a	50131-000	0.25"/0.12" Standard			64178-005		
b	50130-000	0.19"/0.19" Optional			64178-006		
c	57026-000	0.375" Optional flat shim			64178-035		
		Bolster Spring Service Kits			64178-036		
	34013-356	Two Bolster Set, Includes Key Nos. 10-11, 12a, 16-19				Aftermarket Shock Absorber Kit, for vehicles built with equalizing beams without shock absorber mounts, see Page 5	
	34013-357	Tie Bar Bolsters Set, Includes Key Nos. 10-11, 12b, 13-19		34		Shock Absorber (if equipped) <i>For Saddle Height see Figure 1 on Page 7</i>	4
10	67749-050	M20 x 1.5-6G x 50 mm Flange Bolt	8	a	60680-004L	1 6/2" Saddle Height	
11	67745-000	M20 x 1.5 Flange Nut	8	b	60680-005L	1 7/2" Saddle Height	
12		*Bolster Springs	8	c	60680-009L	1 8/4" & 1 8/2" Saddle Height	
a		40K One Pair		d	60680-010L	20 1/2" Saddle Height	
b		46K • 52K Tie-Bar Set		35		*5/8"-11 UNC x 4 1/2" Hex Bolt (if equipped)	4
13		*Tie-Bar Bolster Spring Spacer	4	36		*5/8" Hardened Washer (if equipped)	8
14		*M12 x 1.75-6G x 270 mm Flange Bolt	4	37		*5/8"-11 UNC Locknut (if equipped)	4
15		*M12 x 1.75 Flange Nut	4	38	60304-000	Upper Shock Bracket (if equipped)	4
16	68973-050	M12 x 1.75-6G x 50 mm Flange Bolt	8	39		One-piece Longitudinal Torque Rod Assembly, Straddle/Straddle, Specify Length in mm	2
17	68974-000	M12 x 1.75 Flange Nut	8		6200X-XXX	ULTRA ROD®, Includes Key No. 41	
18	78875-035	M12 x 1.75-6G x 35 mm Round Head Square Neck Bolt	16		82XX-XXXX-XXX	***TRAAX ROD® (Optional)	
19	68974-000	M12 x 1.75 Flange Nut	16	40		***One-piece Transverse Torque Rod Assembly, Straddle/Taper	2
20		Frame Hanger, <i>See Selection Guide on Page 4 and for Saddle Height see Figure 1 on Page 7</i>	2		62350-XXX	40K Only - ULTRA ROD, Includes Key Nos. 41-42	
		Frame Saddle Service Kits, One Side			82XX-XXXX-XXX	****46K • 52K - TRAAX ROD, Specify Length in mm	
	34013-359	40K Includes Key Nos. 18, 19, 21a, 22-23, 31-33		41	47691-000L	Straddle Bushing	6
	34013-360	46K•52K, Includes Key Nos. 18, 19, 21b, 22-23, 31-33		42	64697-000L	Taper Bushing	2
	34013-361	52K, Includes Key Nos. 18, 19, 21b, 22-23, 32-33		43	22186-000	Torque Rod Frame Bracket	4
21		*Frame Saddle	2	44	45045-003	Back-up Plate (for Torque Rod)	4
a		40K		45	49689-000L	Torque Rod Shim	As Req.
b		46K•52K		46	70867-001	P-80 Lubricant - 10 ml (Not Shown) per Bushing	1
	34013-362	Frame Saddle to Hanger Fastener Service Kit, One Side, Includes Key Nos. 22-23			34013-413	Aftermarket Shield Plate Service Kit, for High Articulation Applications, see Page 7	
22		*Saddle Fastener Plate	4	47	75977-002	Shield Plate	4
23		*M16 x 1.5 -6G x 50 mm Flange Bolt	12				

NOTES: * Item included in assembly or service kit only, part not sold separately.

** The HAULMAAX EX 52K capacity suspensions are equipped with dual rebound straps per equalizing beam, while the 40K•46K capacity suspensions have a single rebound strap.

*** Transverse torque rods are mandatory for the HAULMAAX EX suspensions regardless of axle spacing, see Hendrickson Literature Nos. 59310-004 and 59310-058 for more information.

*** TRAAX ROD bushings are non-serviceable, the entire torque rod assembly requires replacement, visit www.traaxrods.com for more information.

Hendrickson Lit. No. 48422-624 – HAULMAAX EX Gauge Card can be obtained on-line at www.hendrickson-intl.com/Litform.



■ Frame Hanger Selection Guide

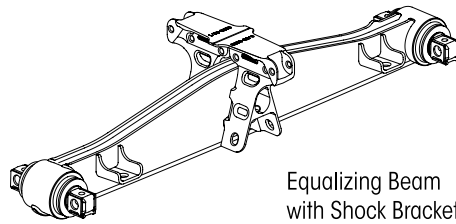
Key No. 20		Saddle to Frame Hanger Fastener Service Kit 34013-362 is used for all configurations below.				
OEM	Capacity	Frame Width	Ride Height	*Saddle Height	Axle Drop	Frame Hanger Part Number
INTERNATIONAL TRUCK	40K	34.25"	8.5"	15.5"	7"	91742-020
		34.50"				91742-220
		34.80"				91742-420
	40K • 46K	34.25"	9.5"	16.5"		91742-040
			13.25"	20.5"		91744-120
		34.50"	9.5"	16.5"		91742-240
			13.25"	20.5"		91744-320
	46K	34.80"	9.5"	16.5"		91744-520
	52K	34.80"	10.5"	17.5"		91742-440
		34.25"				91744-060
		34.50"				91744-260
			34.80"			
FREIGHTLINER	40K	34.31"	8.5"	15.5"	91816-204	
			13.5"	20.5"	91818-209	
		34.56"	8.5"	15.5"	91816-304	
			13.5"	20.5"	91818-309	
	40K•46K	34.31"	9.5"	16.5"	91816-205	
			10.5"	17.5"	91816-206	
		34.56"	9.5"	16.5"	91816-305	
			10.5"	17.5"	91816-306	
	46K	34.31"	11.5"	18.5"	91816-208	
		34.56"			91816-308	
	52K	34.31"	10.5"	17.5"	91818-206	
				18.25"	7.75"	91818-207
		17.5"		7"	91818-306	
		18.25"		7.75"	91818-307	
KENWORTH PETERBILT	40K•46K	34"	8.5"	15.5"	91738-020	
			9.5"	16.5"	91738-040	
			10.5"	17.5"	91738-060	
			11.5"	18.5"	91738-080	
			13.5"	20.25"	91738-115	
			15.5"	22.5"	91738-160	
	46K	34.75"	11.5"	18.5"	91738-280	
	52K	34"	9.5"	16.5"	91740-040	
			10.5"	17.5"	91740-060	
			11.5"	18.5"	91740-080	
WESTERN STAR	40K • 46K • 52K	851 mm	460 mm	638 mm	91750-001	
			490 mm	658 mm	91750-002	
		864 mm	460 mm	638 mm	91750-101	
			490 mm	658 mm	91750-102	
	52K	851 mm	490 mm	658 mm	197 mm	91752-002
				687 mm	197 mm	91752-003
		864 mm		658 mm	178 mm	91752-102
				687 mm	197 mm	91752-103

* To determine saddle height dimension, see Figure 1 on Page 7.

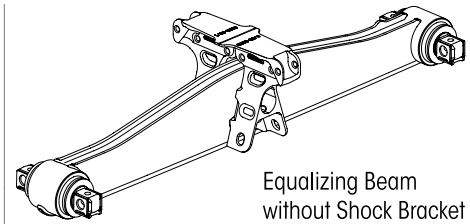


■ Aftermarket Equalizing Beam Assemblies with Rotatable Bar Pin End Bushings

Single Equalizing Beam
Saddle Service Kit
34013-417



Equalizing Beam with Shock Bracket



Equalizing Beam without Shock Bracket

Key No. 1			
Capacity	Beam Length	Part Number with Rotatable Bar Pins	Part Number with Rotatable Bar Pins
40K • 46K	52"	91373-520R	91373-521R
	54"	91373-540R	91373-541R
	60"	91373-600R	91373-601R
46K	72.5"	91373-725R	91373-726R
52K	52"	91383-520R	91383-521R
	54"	91383-540R	91383-541R
	60"	91383-600R	91383-601R

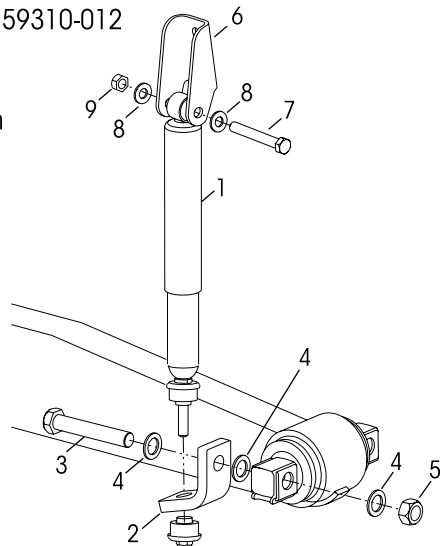
■ Aftermarket Service Kits

Aftermarket Shock Absorber Service Kits

Service Kit Nos.	Saddle Ht.	Tandem Set
64178-003	16½"	For equalizing beams not equipped with lower shock mount
64178-004	17½"•18½"	
64178-032	18¼"	
64178-033	20½"	
64178-009	16½" Mack	

Reference Lit. No. 59310-012

NOTE:
Not available with
315 mm tires

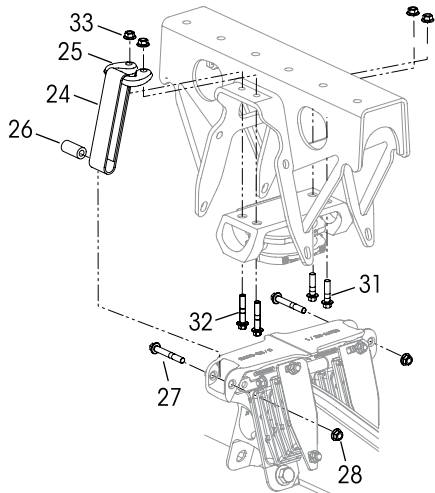


KEY NO.	PART NO.	DESCRIPTION	KIT QTY.
Shock Absorber Service Kit, Tandem Set <i>For Saddle Height see Figure 1 on Page 7</i>			
	64178-003	16½" Saddle Height, Includes Key Nos. 1a, 2a-b, 3-9	
	64178-004	17½"/18½" Saddle Height, Includes Key Nos. 1b, 2a-b, 3-9	
	64178-009	16½" Saddle Height - Mack Only, Includes Key Nos. 1c, 2c, 3-9	
	64178-032	18¼" Saddle Height, Includes Key Nos. 1d, 2a-b, 3-9	
	64178-033	20½" Saddle Height, Includes Key Nos. 1e, 2a-b, 3-9	
1		Shock Absorber Assembly	4
a	60680-004L	16½" Saddle Height	
b	60680-005L	17½" Saddle Height	
c	60680-006L	16½" Saddle Height, Mack Only	
d	60680-009L	18¼" Saddle Height,	
e	60680-010L	20½" Saddle Height	
2		Lower Shock Bracket	
a	64148-001	Front	2
b	64148-002	Rear (Not Shown)	2
c	64835-000	Mack Only, Front and Rear (Not Shown)	4
	34013-323	Lower Shock Bracket Fastener Kit, One Beam Includes Key Nos. 3-5	
3		*1"-8 UNC x 7" Hex Bolt,	4
4		*1" Hardened Washer	12
5		*1"-8 UNC Locknut	4
6	64146-000	Upper Shock Bracket	4
	50754-023	Upper Shock Bracket Fastener Kit, One Beam Includes Key Nos. 7-9	
7		*5/8"-11 UNC x 4½" Hex Bolt	4
8		*5/8" Hardened Washer	8
9		*5/8"-11 UNC Locknut	4



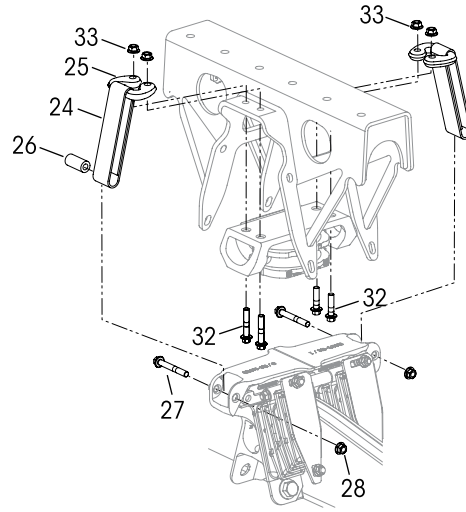
■ Single and Dual Rebound Straps

Service Kit No. 34013-354 | One Side, 40K•46K
Single Rebound Strap for vehicles originally equipped with one rebound strap



Key Nos.	Quantity Per Vehicle	Quantity Per Kit
24-28	2	1
31	4	2
32	4	2
33	8	4

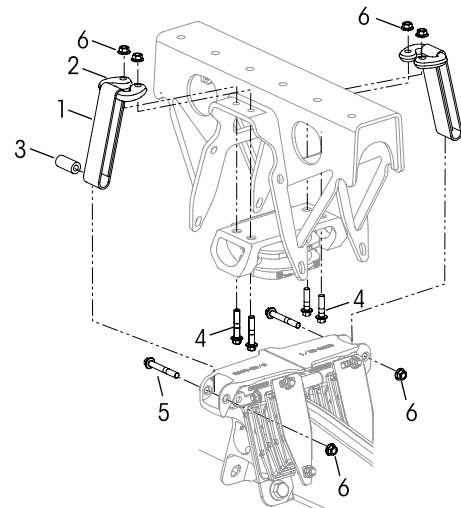
Service Kit No. 34013-355 | One Side, 52K
Dual Rebound Straps for vehicles originally equipped with dual rebound straps



Key Nos.	Quantity Per Vehicle	Quantity Per Kit
24-28	4	2
32	8	4
33	8	4

Aftermarket Dual Rebound Strap Enhancement Kit

Service Kit No. 34013-363 | Aftermarket Dual Rebound Strap Conversion Vehicle Set



KEY NO.	PART NO.	DESCRIPTION	KIT QTY.
	34013-363	Aftermarket Dual Rebound Strap Enhancement Kit, Tandem Set, Includes Key Nos. 1-6	
1		*Rebound Strap	4
2		*Rebound Bracket	4
3		*Rebound Spacer	4
4		*M12 x 175-6G x 65 mm Flange Bolt	8
5		*M12 x 175-6G x 90 mm Flange Bolt	4
6		*M12 x 175 Flange Nut	10



Aftermarket Shield Plate Service Kit

Service Kit No. 34013-413 | Aftermarket Shield Plate for High Articulation Applications

KEY NO.	PART NO.	DESCRIPTION	KIT QTY.
	34013-413	Aftermarket Shield Plate Service Kit, Tandem Set for High Articulation Applications, Includes Key Nos. 1-3	
1		*Shield Plate	4
2		*M20 x 1.5-6G x 50 mm Flange Bolt	8
3		*M20 x 1.5 Flange Nut	8

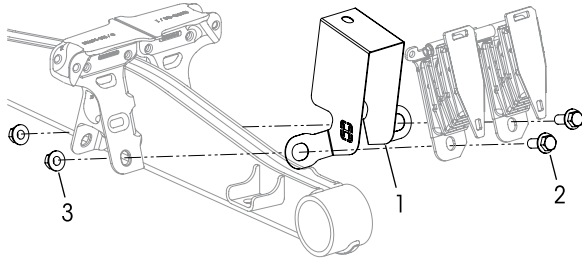
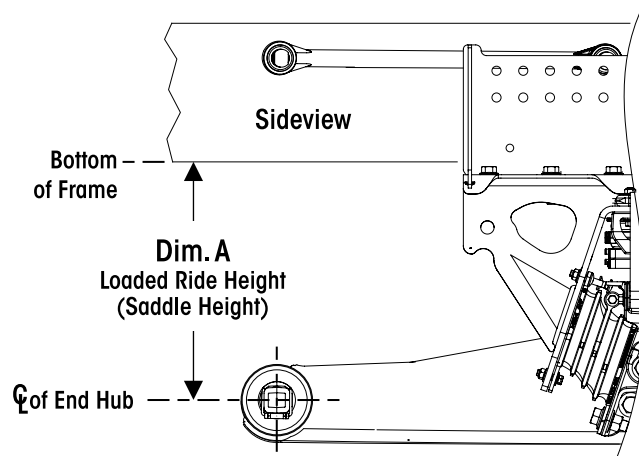


FIGURE 1



■ Special Tools

BAR PIN END BUSHING TOOLS

INSTALLATION TOOLS

Hendrickson Part No. 66086-103

OTC Part No. 1757 Visit otctools.com

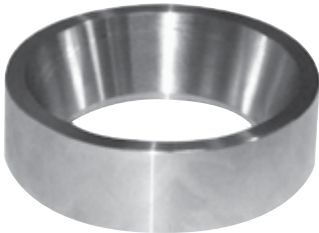


Special tooling is required to service the bar pin end bushings. Hendrickson part number 66086-103 tool is used with the equalizing beam removed from the truck, and in conjunction with OTC No. 51100 press plate and a 100-ton hydraulic shop press.

TORQUE ROD FUNNEL TOOL

ULTRA ROD

Hendrickson Part No. 66086-001L



REMOVAL TOOLS

Hendrickson Part No. 66086-104

OTC Part No. 206457 Visit otctools.com



Hendrickson Part No. 66086-105

OTC Part No. 302030 Visit otctools.com



This is a general parts list to provide directional information. Components may vary by model. Questions in regards to parts, contact Hendrickson Truck Parts at 1.866.755.5968 (Toll-free U.S. and Canada), 630.910.2800 (Outside U.S. and Canada) or email: truckparts@hendrickson-intl.com.

Actual product performance may vary depending upon vehicle configuration, operation, service and other factors.

All applications must comply with applicable Hendrickson specifications and must be approved by the respective vehicle manufacturer with the vehicle in its original, as-built configuration.

Contact Hendrickson for additional details regarding specifications, applications, capacities, and operation, service and maintenance instructions.

Call your truck dealer or Hendrickson at 1.866.755.5968 (toll-free) or 1.630.910.2800 for additional information.



www.hendrickson-intl.com

SP-328 Rev C 10-20

© 2020 Hendrickson USA, L.L.C. All Rights Reserved. All trademarks shown are owned by Hendrickson USA, L.L.C., or one of the affiliates, in one or more countries.

Information contained in this literature was accurate at the time of publication. Product changes may have been made after the copyright date that are not reflected.

TRUCK COMMERCIAL VEHICLE SYSTEMS
800 South Frontage Road
Woodridge, IL 60517-4904 USA
1.866.755.5968 (Toll-free U.S. and Canada)
1.630.910.2800 (Outside U.S. and Canada)
Fax 1.630.910.2899

Printed in United States of America