

# PARTS LIST

## STEERTEK™ NXT High Capacity Steer Axle System for Sutphen Fire/Rescue Vehicles

LIT NO: SP-306

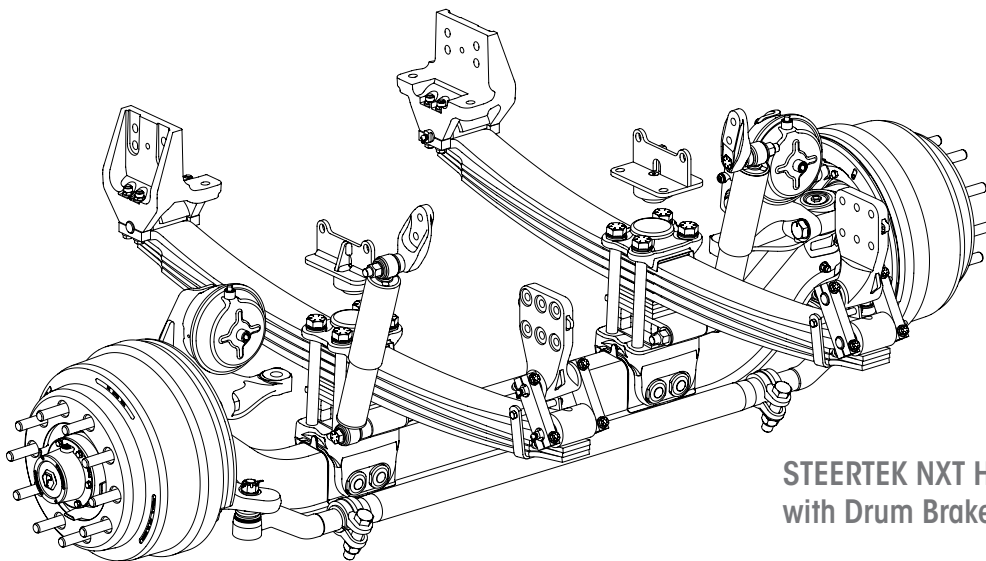
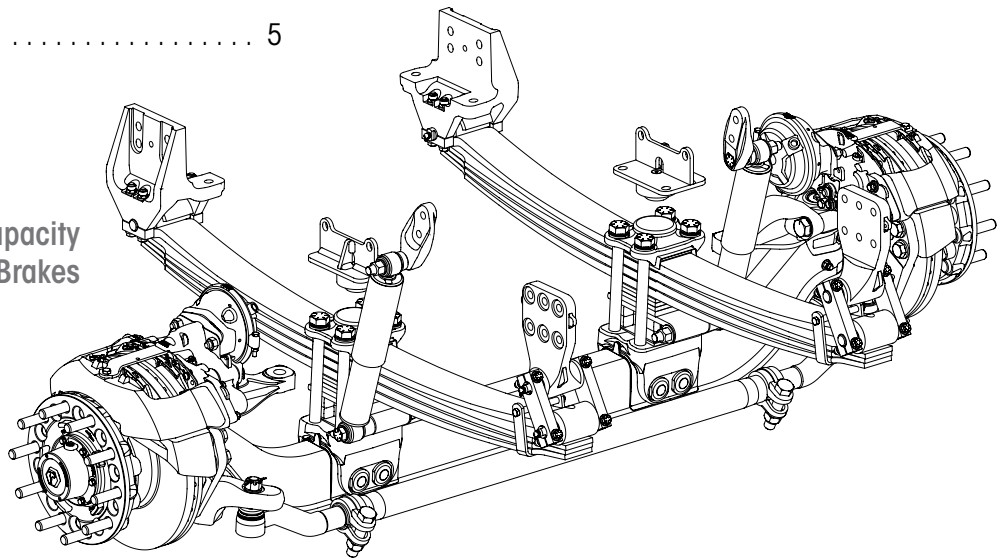
DATE: April 2020

REVISION: B

### CONTENTS

DESCRIPTION	PAGE	DESCRIPTION	PAGE
Parts Lists		Selection Guides . . . . .	6
■ Suspension • Axle • Clamp Group Assembly	2	Special Tool . . . . .	6
■ Disc Brake Assembly . . . . .	4		
■ Drum Brake Assembly . . . . .	5		

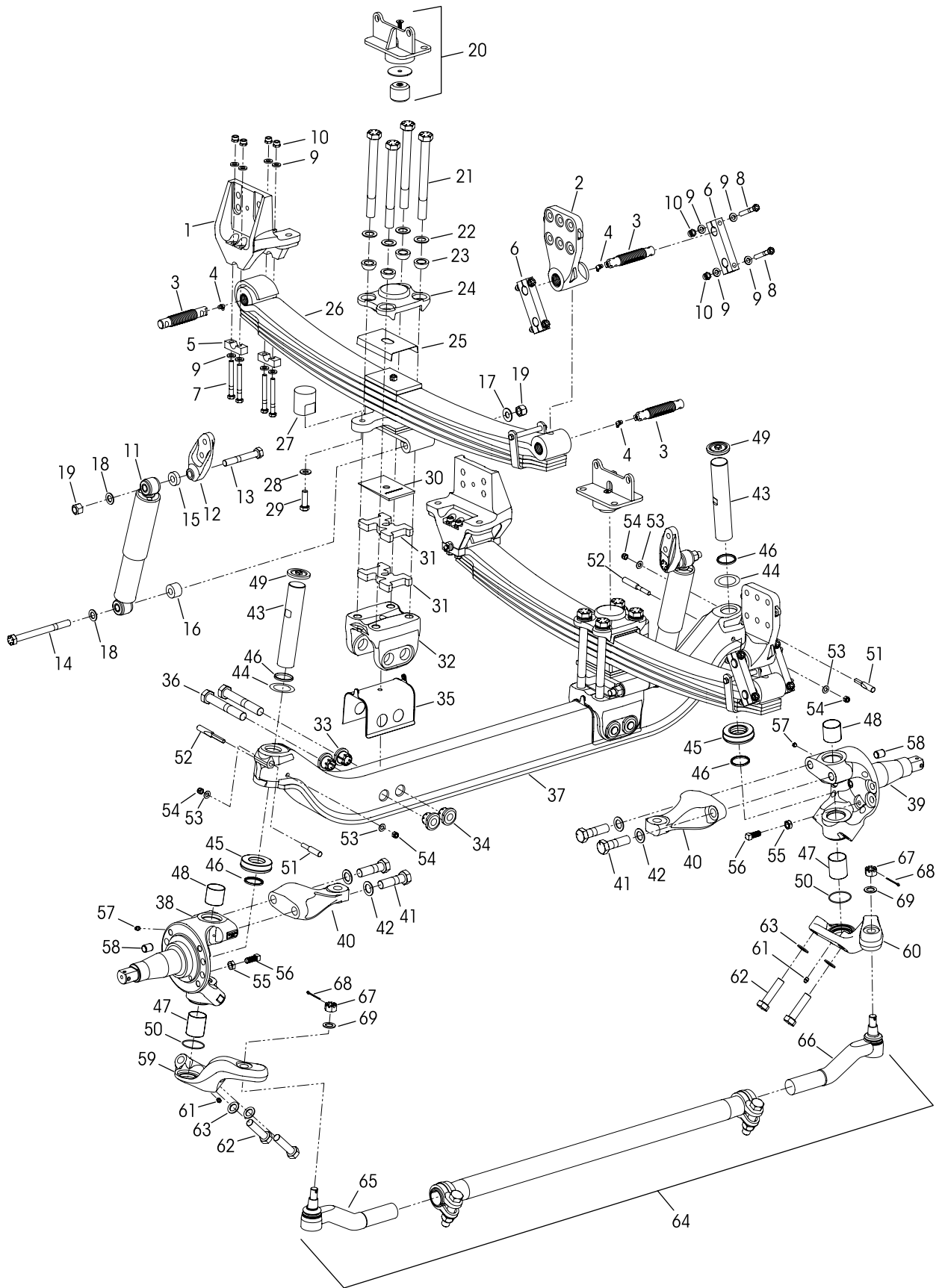
STEERTEK NXT High Capacity  
with Air Disc Brakes



STEERTEK NXT High Capacity  
with Drum Brakes



Suspension • Clamp Group • Axle Assembly





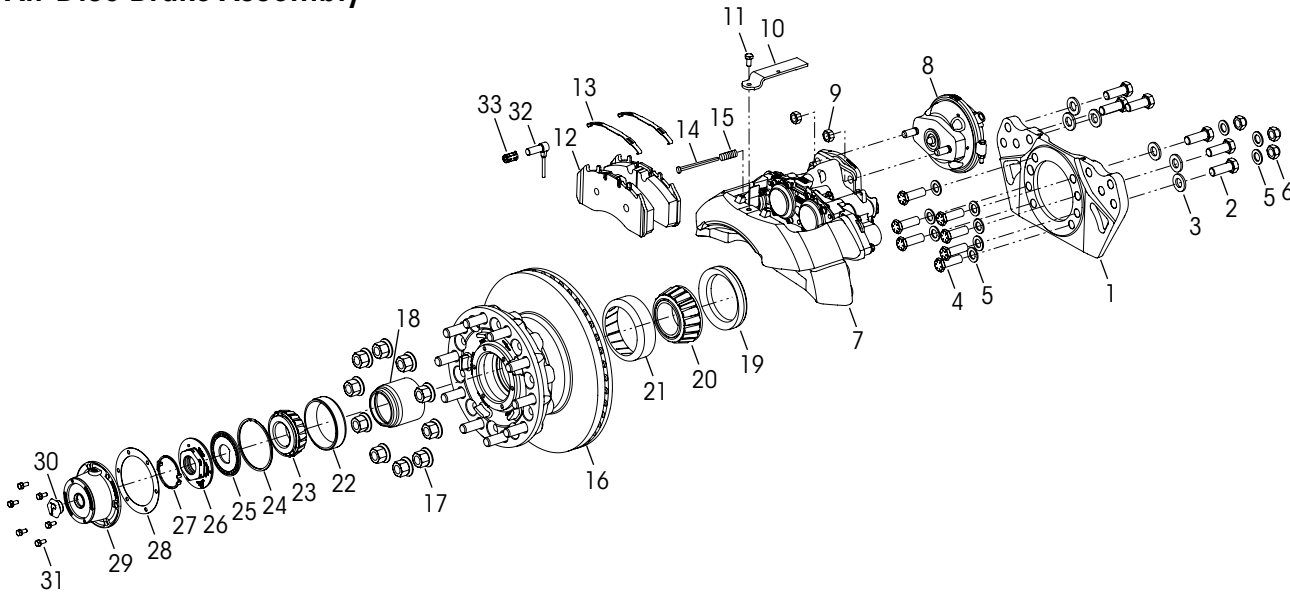
# STEERTEK™ NXT High Capacity Steer Axle System for Sutphen Vehicles

KEY NO.	PART NO.	DESCRIPTION	VEHICLE QTY.	KEY NO.	PART NO.	DESCRIPTION	VEHICLE QTY.
1	79894-003	Frame Hanger Assembly Front	2	35	78887-001	Axle Seat Liner	2
2	80159-001	Rear with Bushing	2	36		*1"-8 UNC x 6½" Hex Thru Bolt	4
		<b>Frame Hanger Fastener Service Kit, One Side</b>		37	91365-XXX	STEERTEK NXT Axle Fire and Rescue, Includes Key Nos. 38-69, See Table 2 on Page 6	1
	34013-247	Front, Includes Key Nos. 5, 7, 9-10			77243-XXX	Knuckle Assembly, Includes Key Nos. 46, 55-58, See Table 2 on Page 6	
	34013-248	Rear, Includes Key Nos. 3-4, 6, 8-10		38		Left Hand	1
	34013-249	<b>Single Threaded Pin and Grease Zerk Service Kit, Includes Key Nos. 3-4</b>		39		Right Hand	1
3		*Threaded Pin	6	40	77337-XXX	Steering Arm, See Table 2 on Page 6	2
4		*Grease Zerk	6	41	30550-027	1"-14 UNF x 3½" Hex Bolt	4
5	79843-000	Front Hanger Bottom Cap	4	42	22962-051	1" Flat Washer	4
6	79888-001	Rear Shackles	4		34013-230	<b>Kingpin Service Kit, One Side</b> Includes Key Nos. 43, 44a, 45-54, 62-63	
7	80362-001	½"-20 UNC x 4½" Hex Bolt	8	43	75923-001	Kingpin	2
8	80362-002	½"-20 UNC x 3¼" Shackle Hex Bolt	8	44		Kingpin Shim (As needed for service)	2
9	22962-014	½" Flat Washer	32	a	77241-002	0.01" Thickness	
10	17700-034	½"-20 UNC Nut	16	b	77241-003	0.02" Thickness	
11	80606-001L	Shock Absorber	2	45	75918-001	Thrust Bearing	2
12	78250-002	Shock Bracket	2	46	75966-001	Kingpin Seal	4
13	50764-008	¾"-10 UNC x 5" Upper Shock Hex Bolt	2			Kingpin Bushing	
14	50764-014	¾"-10 UNC x 8½" Lower Shock Hex Bolt	2	47	75919-001	Lower, 2½" Length	2
		Shock Spacer		48	75919-002	Upper, 2" Length	2
15	59946-006	Upper, 13.2 mm Thick	2	49	77209-001	Grease Cap	2
16	59946-015	Lower Outboard, 28 mm Thick	2	50	68303-004	O-Ring	2
17	59946-005	Lower Inboard, 3 mm Thick	2			Kingpin Draw Key	
18	22962-001	¾" Flat Washer	4	51	75925-001	Upper, 3¾" Length	2
19	49842-000	¾"-10 UNC Nut	4	52	75925-002	Lower, 4¾" Length	2
20	79854-000	Jounce Stop Assembly	2	53	22962-054	7/16" Flat Washer	4
	91367-XXX	Leaf Spring & Clamp Group Assembly, Includes Key Nos. 21-36, See Table 1 on Page 6	2	54	17700-008	7/16"-14 UNC-2B Nut	4
	34013-XXX	<b>Clamp Group Service Kit, One Side, Includes Key Nos. 21-23, 25, See Table 1 on Page 6</b>		55	17491-023	5/8"-11 UNC-2B Jam Nut	2
21	64107-XXX	1"-8 UNC Hex Bolt, See Table 1 on Page 6	8	56	80183-000	5/8"-11 UNC x 1½" Set Screw	2
22	22962-051	1" Flat Washer	8	57	33117-000	Grease Zerk	2
23	78356-002	1" Spherical Washer	8	58	64246-000	ABS Sensor Sleeve	2
24	78888-000	Top Pad	2		77244-XXX	Tie Rod Arm Assembly, Includes Key No. 61 See Table 2 on Page 6	
25	79273-001	Spring Liner	2	59		Left Hand	1
26		Leaf Spring Assembly, See Table 1 on Page 6	2	60		Right Hand	1
27	91432-000	Lockout Spacer 24K, 11.2125" Ride Height only See Table 1 on Page 6	2	61	33117-000	Grease Zerk	2
28	22962-004	5/8" Flat Washer	2	62	30418-014	7/8"-14 UNF x 3½" Hex Bolt	4
29	32043-006	5/8"-11 UNC-2A x 2" Hex Bolt, Replaces 32043-010	2	63	22962-002	7/8" Flat Washer	4
30	80143-001	Caster Wedge - 2°	2	64	79365-001	Tie Rod Assembly, 20K Drop, Includes Key Nos. 65-67	1
31		Leaf Spring Spacer (if equipped) See Table 1 on Page 6	4			<b>Tie Rod End Service Kits,</b>	
32	77232-000	Axle Seat	2		60961-884	Axle Set, Includes Kit Nos. 60961-882 and -883	
	34013-229	<b>Axle Clamp Collar Service Kit, One Side</b> Includes Key Nos. 33-36			60961-882	Left Hand, Includes Key Nos. 65, 67-69	
		*Axle Collar			60961-883	Right Hand, Includes Key Nos. 66-69	
33		Non Threaded	4			Tie Rod End, Includes Key No. 67	
34		Threaded	4	65	79366-001	Left Hand	1
				66	79366-002	Right Hand	1
				67		*7/8"-14 UNF-2A Castle Nut	2
				68	17800-004	Cotter Pin	2
				69	22962-002	7/8" Flat Washer	2

**NOTE:** \* Item included in kit/assembly only, part not sold separately.



**Air Disc Brake Assembly**

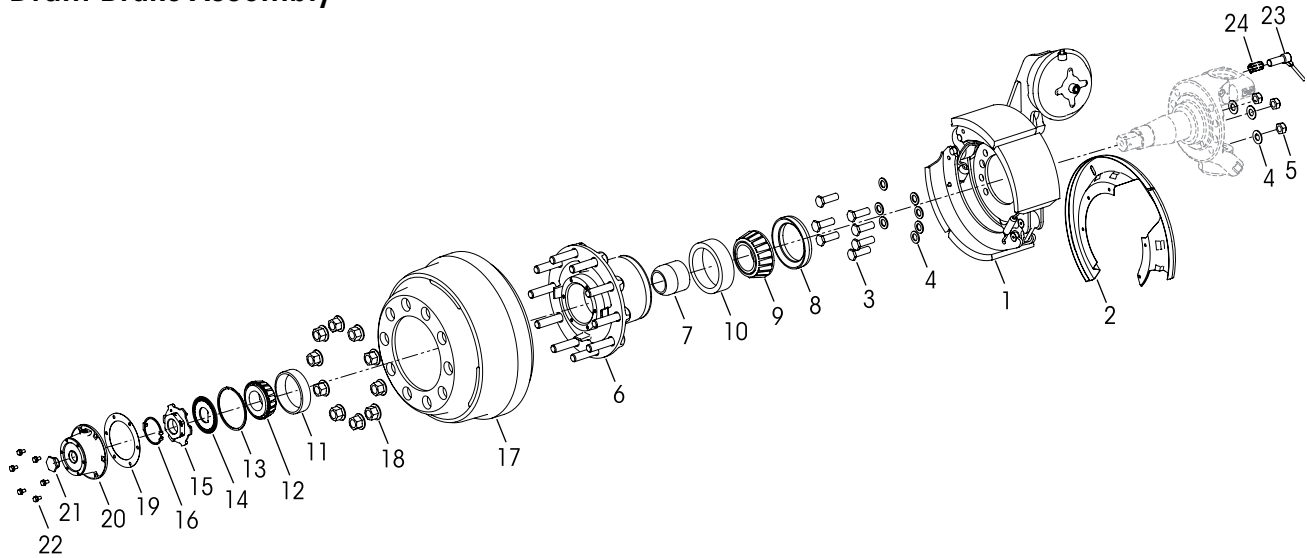


KEY NO.	PART NO.	DESCRIPTION	VEHICLE QTY.
1		*Meritor Torque Plate Assembly Left Hand, Part No. 3215-F-1878 Right Hand, Part No. 3215-E-1877	1 1
2	69781-002	M20 x 55 mm Hex Head Bolt	12
3	58246-039	M20 Flat Washer	12
4	80345-004	3/4"-16 UNC x 2 1/4" Low Profile Hex Head Bolt	14
5	22962-001	3/4" Flat Washer	20
6	80691-001	3/4"-16 UNC Hex Nut	6
7		*Meritor Air Disc Brake Caliper Assembly, Includes Key Nos. 10-11, 14-15 Left Hand, Part No. EX225H202XX000S Right Hand, Part No. EX225H201XX000S	1 1
8		*WABCO Air Brake Chamber MGM T24L, Includes K80131-001 Key No. 9 Left Hand, Part No. 423 506 1340 Right Hand, Part No. 423 506 1350	1 1
9		*Hex Nut *Meritor Disc Pad Retainer Kit No. 22510, Includes Key Nos. 10-11	4
10		*Pad Retainer	
11		*Pad Retainer Bolt *Meritor Air Disc Brake Pad Kit No. 2252H2CG, Includes Key Nos 12-13	
12		*Air Disc Brake Pad	
13		*ADB Pad Spring *Meritor Wear Indicator Kit No. 225255, Includes Key Nos. 14-15	
14		*Wear Indicator	
15		*Wear Indicator Spring	

KEY NO.	PART NO.	DESCRIPTION	VEHICLE QTY.
16		*Conmet Hub and Rotor Assembly Part No. 10083224, Includes Bearings and Seals *Conmet Brake Rotor Replacement Kit No. 10082181, One Wheel End, Includes Rotor and 10 of each Cap Screws and Washers	2
17		**M22 x 1.5 Two-piece Wheel Nut *Conmet Hub Bearing Rebuild Kit No. 10081728, One Wheel End, Includes Key Nos. 18-23 *Conmet Wheel Seal Kit No. 10081519, One Wheel End, Includes Key Nos. 18-19	20
18		*Bearing Spacer Part No. 10034342	
19		*Wheel Seal Part No. 10045883	
20		*Inner Bearing Cone Part No. 10041922	
21		*Inner Bearing Cup Part No. 10041921	
22		*Outer Bearing Cup Part No. 10041923	
23		*Outer Bearing Cone Part No. 10041924 *Conmet Preset Plus FL Nut Assembly Kit No. 10036550, Includes Key Nos. 24-27	
24		*Snap Ring - Double Wind Part No. 10033288	
25		*Spindle Nut Lockwasher Part No. 10031171	
26		*Outer Spindle Nut Part No. 10031170	
27		*Snap Ring Retainer Part No. 10031172	
28		*Federal-Mogul Hub Cap Gasket No. G-3009	2
29		*Federal-Mogul Hub Cap Part No. 343-009, Includes Key No. 30	2
30		*Rubber Plug	
31	64545-002	5/16"-18 UNC x 3/4" Hex Bolt with Retained Washer	12
32		*WABCO ABS Sensor Part No. 441-032-900-0	2
33	64550-000	ABS Sensor Clip	2



## Drum Brake Assembly



KEY NO.	PART NO.	DESCRIPTION	VEHICLE QTY.	KEY NO.	PART NO.	DESCRIPTION	VEHICLE QTY.
1		*Meritor Drum Brake Foundation Kit, Includes Key No. 2 Left Hand, Part No. QP4-1656-2125 Right Hand, Part No. QP4-1656-2126	1 1	10		*Inner Bearing Cup Part No. 10041921	
2		*Dust Shield	2	11		*Outer Bearing Cup Part No. 10041923	
3	80345-004	3/4"-16 x 2 1/4" Low Profile Hex Head Bolt	14	12		*Outer Bearing Cone Part No. 10041924	
4	22962-001	3/4" Flat Washer	20			*Conmet Preset Plus FL Nut Assembly Kit No. 10036550, Includes Key Nos. 13-16	
5	80691-001	3/4"-16 UNC - 2B Nut	6	13		*Snap Ring - Double Wind Part No. 10033288	
6		*Conmet Preset Plus FL Hub Assembly Part No. 10081313, Includes Key Nos. 6-16 *Hub Part No. 10033316 *Conmet Hub Bearing Rebuild Kit No. 10081728, One Wheel End, Includes Key Nos. 7-12 *Conmet Wheel Seal Kit No. 10081519, One Wheel End, Includes Key Nos. 7-8	2	14		*Spindle Nut Lockwasher Part No. 10031171	
7		*Bearing Spacer Part No. 10034342		15		*Outer Spindle Nut Part No. 10031170	
8		*Wheel Seal Part No. 10045883		16		*Snap Ring Retainer Part No. 10031172	
9		*Inner Bearing Cone Part No. 10041922		17		*Conmet Drum 16.5 x 6 Part No. 10033071	
				18		**M22 x 1.5 Two-piece Wheel Nut	20
				19		*Federal-Mogul Hub Cap Gasket No. G-3009	2
				20		*Federal-Mogul Hub Cap Part No. 343-009, Includes Key No. 21	2
				21		*Rubber Plug	
				22	64545-002	5/16"-18 UNC x 3/4" Hex Bolt with Retained Washer	12
				23		*WABCO ABS Sensor Part No. 441-032-900-0	2
				24	64550-000	ABS Sensor Clip	2

**NOTES:** \* Not supplied by Hendrickson for aftermarket service purposes. Description and part number listed for reference only. For more information and assistance with service, maintenance and rebuild instructions on these components see below component manufacturers:

- Conmet technical and parts support 800.547.9473 and for technical support: [www.conmet.com/general/literature](http://www.conmet.com/general/literature), go to Wheel End Literature, scroll down to Service Manual, Lit No. 10084476
- Federal Mogul Technical and Part Support 800.325.8886 or online at [www.fme-cat.com](http://www.fme-cat.com)
- Meritor Technical and Part Support 888.725.9355, or online for parts: [www.meritorpartsexpress.com](http://www.meritorpartsexpress.com) and for technical support: [www.meritorbullpen.com](http://www.meritorbullpen.com)
- WABCO Technical and Part Support 855.228.3203 or online at [www.wabco-auto.com/aftermarket-services/inform-product-catalog](http://www.wabco-auto.com/aftermarket-services/inform-product-catalog)

\*\* Not supplied by Hendrickson, used for reference only. Contact the vehicle manufacturer for more information.



■ Selection Guides

Table 1 Leaf Spring Assembly and Components

Capacity	Ride Height	Leaf Spring and Clamp Group Assembly	Clamp Group Service Kit	Leaf Spring Assembly Key No. 26	1" Hex Bolt Key No. 21		1" Leaf Spring Spacer Key No. 31		Right & Left Hand Lockout Spacer Key No. 27	
					Length	Part No.	Qty	Part No.		
19K	8	91367-002	34013-254	82726-000	7.5	64107-000	--	--		
	10.1125"	91367-001	34013-314	82613-000	9.5	64107-007				
20K	8.2	91367-102	34013-254	82728-000	7.5	64107-000				
	10.1125"	91367-101	34013-314	82614-000	9.5	64107-007				
24K	9.2125"	91367-201	34013-255	82615-000	8.5	64107-006	4	79814-000	91432-000	
	11.2125"	91367-202	34013-315		82641-000	10.5				64107-009
		91367-301 (LH)		82642-000						
		91367-302 (RH)								

Table 2 Axle, Knuckle, Tie Rod Arm Assembly and Steering Arm

Wheelbase	Capacity	STEERTEK NXT	Knuckle Assembly		Tie Rod Arm Assembly		Steering Arm	
		Axle Assembly Key No. 37	Left Hand Key No. 38	Right Hand Key No. 39	Left Hand Key No. 59	Right Hand Key No. 60	Left Hand Key No. 40	Right Hand Key No. 40
170-195"	19K	91365-001	77243-001	77243-102	77244-059	77244-060	*77337-009	--
	20K	91365-006		77243-002			*77337-009	
196-220"	19K	91365-002		77243-102	77244-031	77244-032	*77337-009	--
		91365-003		*77337-009				
221-250"	24K	91365-004		77243-002	77244-063	77244-064	77337-009	
251-280"		91365-005	77244-065		77244-066			

\* Replaces 77337-003

■ Special Tool

**KINGPIN BUSHING TOOL – ADJUSTABLE STRAIGHT FLUTE REAMER – HIGH CAPACITY**



The dimension of cutting diameter must facilitate a range of **2.00"-2.01"**

This is a general parts list to provide directional information. Components may vary by model. Questions in regards to parts, contact Hendrickson Truck Parts at 1.866.755.5968 (Toll-free U.S. and Canada), 630.910.2800 (Outside U.S. and Canada) or e-mail: truckparts@hendrickson-intl.com.  
 Actual product performance may vary depending upon vehicle configuration, operation, service and other factors.  
 All applications must comply with applicable Hendrickson specifications and must be approved by the respective vehicle manufacturer with the vehicle in its original, as-built configuration.  
 Contact Hendrickson for additional details regarding specifications, applications, capacities, and operation, service and maintenance instructions.

**Call Hendrickson at 1.866.755.5968 (toll-free) or 1.630.910.2800 for additional information.**



www.hendrickson-intl.com

**TRUCK COMMERCIAL VEHICLE SYSTEMS**  
 800 South Frontage Road  
 Woodridge, IL 60517-4904 USA  
 1.866.755.5968 (Toll-free U.S. and Canada)  
 1.630.910.2800 (Outside U.S. and Canada)  
 Fax 1.630.910.2899

SP-306 Rev B 04-20

© 2019 – 2020 Hendrickson USA, L.L.C. All Rights Reserved. All trademarks shown are owned by Hendrickson USA, L.L.C., or one of the affiliates, in one or more countries.

Information contained in this literature was accurate at the time of publication. Product changes may have been made after the copyright date that are not reflected.

Printed in United States of America