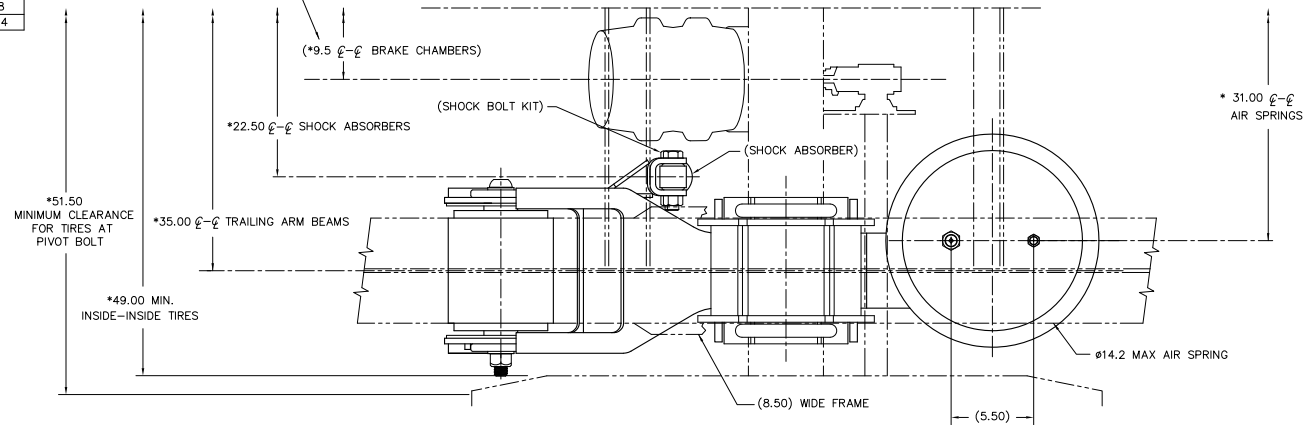


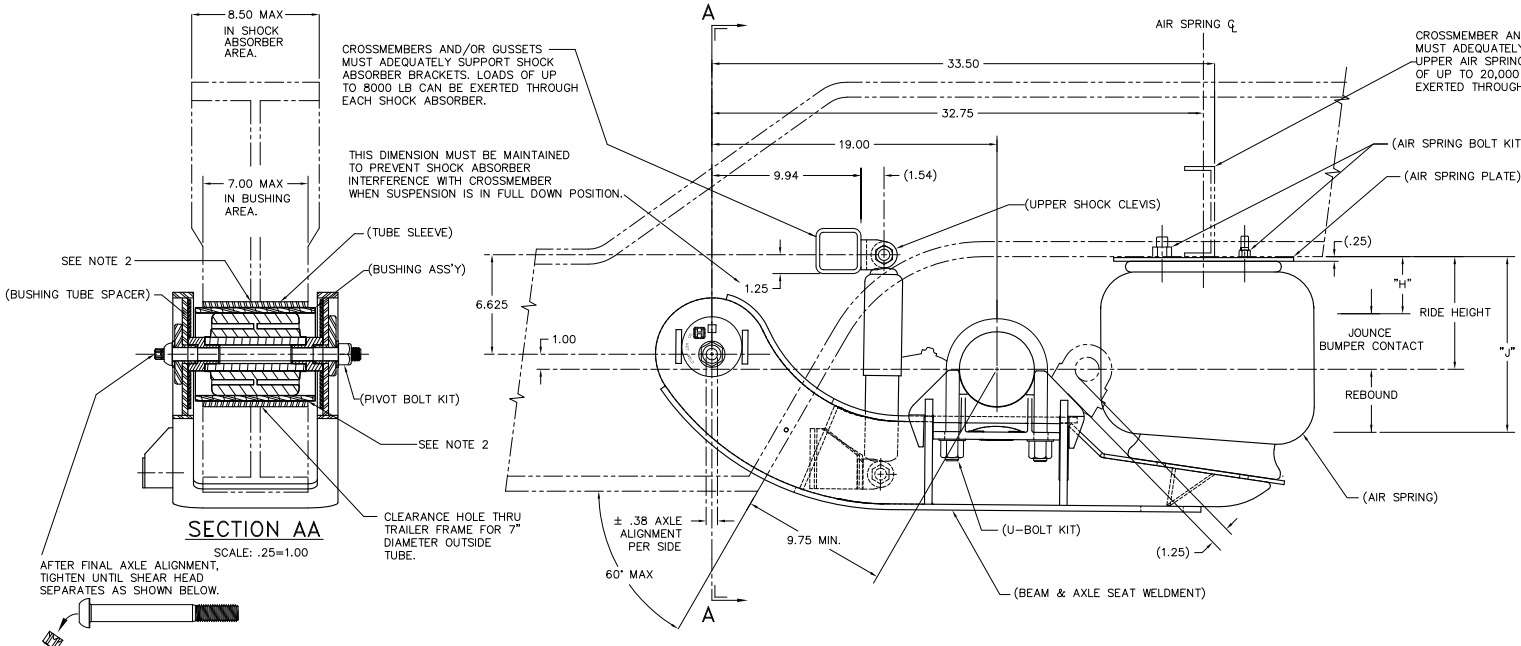
STANDARD TRAVEL DIMENSIONS (IN)	
DESCRIPTION	TRAVEL HEIGHT
JOUNCE	7.5" 9.0"
BUMPER CONTACT	3.3 4.2
REBOUND	2.8 3.6
"H"	5.4 5.4
"J"	4.2 4.8
"J"	12.9 14.4

BRAKE CHAMBER LOCATIONS	
ROCKWELL	DANA
*8.71	*9.50



- NOTES:**
- SUGGESTED CROSSMEMBER LOCATIONS ARE SHOWN. ACTUAL SIZE AND SHAPE MAY VARY WITH TRAILER DESIGN. IT IS THE RESPONSIBILITY OF THE SUSPENSION INSTALLER TO ENSURE STRUCTURAL ADEQUACY OF TRAILER FRAME AND CROSSMEMBER.
  - REFER TO THE AXLE/Y-BEAM INSTALLATION SECTION OF L577 (HT INSTALLATION PROCEDURES) FOR INSTRUCTION ON INSTALLING THE PIVOT BUSHING TUBE SLEEVES AND ASSEMBLIES INTO THE TRAILER FRAME.
  - \* SYMBOL DENOTES TO ADD 6.0 INCHES FOR 102.0 INCH WIDE TRAILERS.
  - LOAD CAPACITY: 30,000 LB AT GROUND.
  - SEE L579, ALIGNMENT PROCEDURES, FOR QUIK-ALIGN® PIVOT CONNECTION ASSEMBLY.
  - RECOMMENDED BRAKE CAMSHAFT AND BRAKE CHAMBER LOCATIONS MAY VARY SLIGHTLY BASED ON AXLE MANUFACTURERS RECOMMENDATIONS.
  - IT IS RECOMMENDED THAT THIS SUSPENSION BE USED IN CONJUNCTION WITH HT300UB

- CLEARANCE SPECIFICATIONS:**
- 1.0 INCH MINIMUM REQUIRED BETWEEN TOP OF THE TIRE AND BOTTOM OF TRAILER STRUCTURE WHEN AXLE IS AT FULL JOUNCE.
  - 2.0 INCHES MINIMUM REQUIRED BETWEEN INSIDE OF TIRE AND TRAILER STRUCTURE FOR LATERAL MOVEMENT.
  - 1.0 INCH MINIMUM CLEARANCE MUST BE MAINTAINED AROUND AIR SPRING WHEN IT IS AT MAXIMUM DIAMETER.
  - ALLOW 1.5 INCHES AROUND FORWARD SECTION OF BEAM ASSEMBLY FOR SUSPENSION MOVEMENT.



This Print remains the property of Hendrickson. All information contained thereon is confidential. It is loaned, subject to return on demand and on express condition that it is not to be copied or used directly or indirectly for any purpose other than the purpose for which it has been loaned to you.

TORQUE SPECIFICATIONS		
DESCRIPTION	SIZE	TORQUE (FT-LB)
SHOCK BOLTS, UPPER	3/4-10	210-235
SHOCK BOLTS, LOWER	3/4-16	210-235
AIR SPRING NUTS, UPPER	1/2-13	40-50
AIR SPRING NUTS, UPPER	3/4-16	80-100
AIR SPRING BOLTS, LOWER	1/2-13	40-50
U-BOLTS	7/8-14	475-525



 <b>HENDRICKSON</b> TRAILER SUSPENSION SYSTEMS	UNLESS OTHERWISE NOTED, DIMENSIONS ARE IN INCHES.	DRAWN BY: K. ERMANN	DATE: 11-12-09	SCALE: .25=1.00	SHEET: D	PAGE: 1 OF 1
	TRAILER SUSPENSION SYSTEMS	DIMENSIONS ARE IN INCHES.	CHECK BY: C. RADCLIFF	THIS DRAWING IS THE PROPERTY OF HENDRICKSON.	<b>HT300YB SUSPENSION INSTALLATION</b>	
2700 WASHINGTON PLACE SE., CANTON, OH 44705-4001, U.S.A.	ANGULAR: $\pm .05^\circ$	DATE: 11-16-09	DRAWN BY: S. BATES	<b>D-31384</b>		