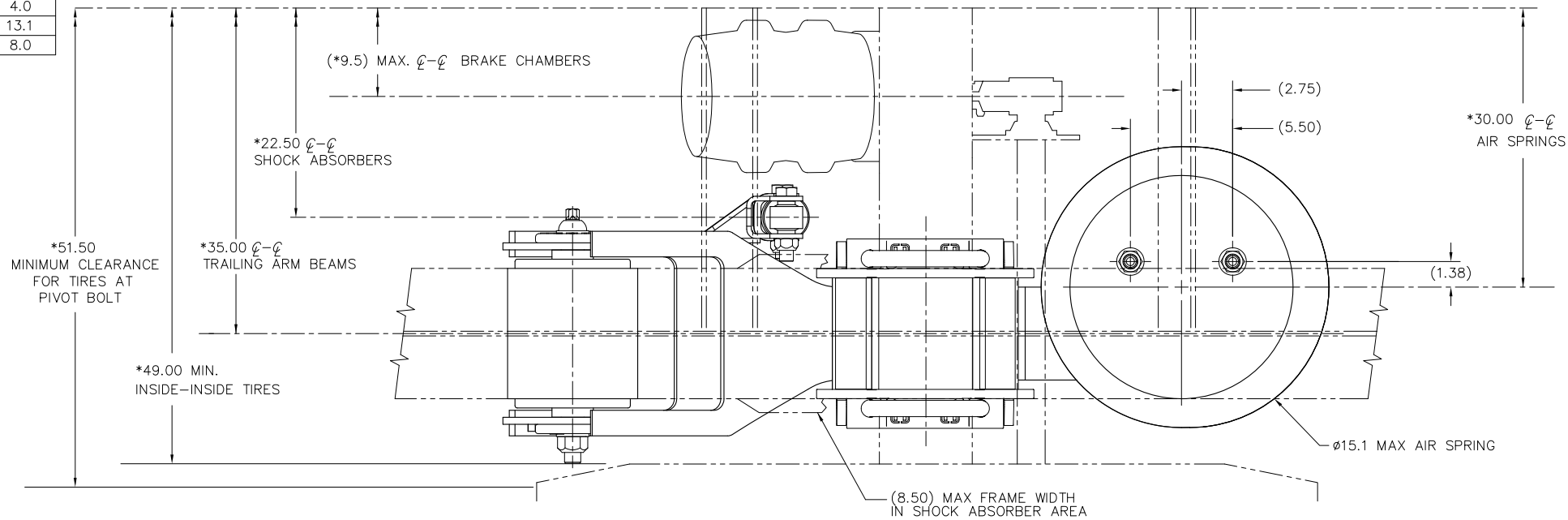
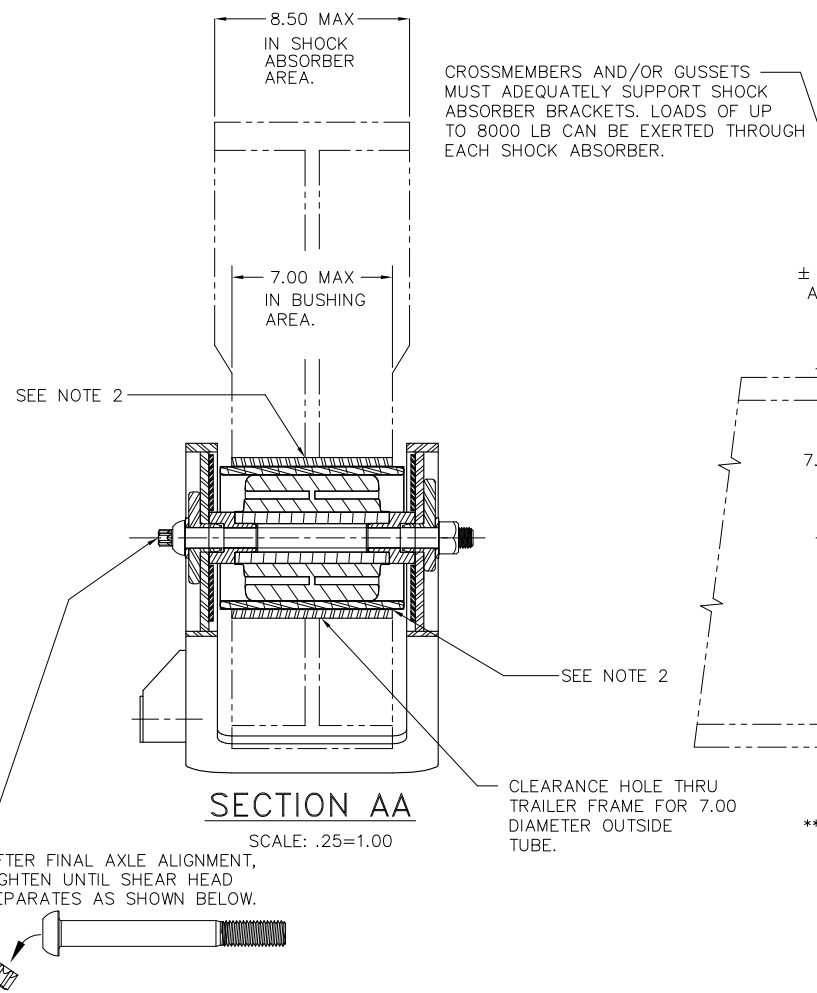


DESCRIPTION	RIDE HEIGHT		
	6.5"	7.5"	9.0"
JOUNCE	3.6	4.2	5.0
BUMPER CONTACT	3.1	3.6	4.5
REBOUND	4.1	4.1	4.1
"H"	2.9	3.3	4.0
"J"	10.6	11.6	13.1
"E"	5.5	6.5	8.0



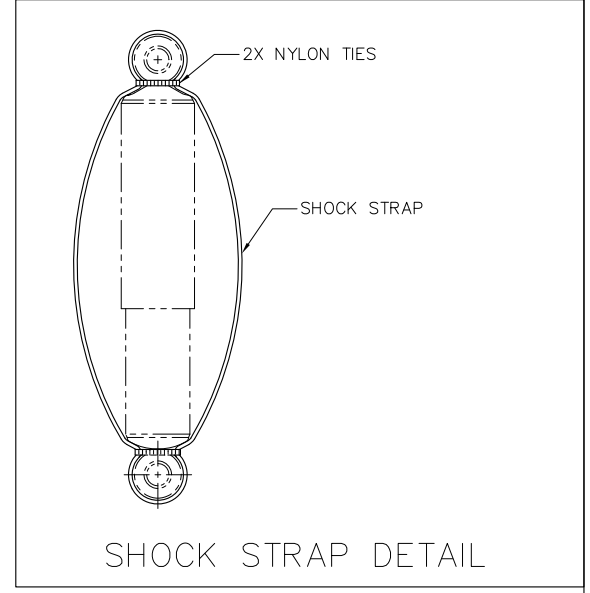
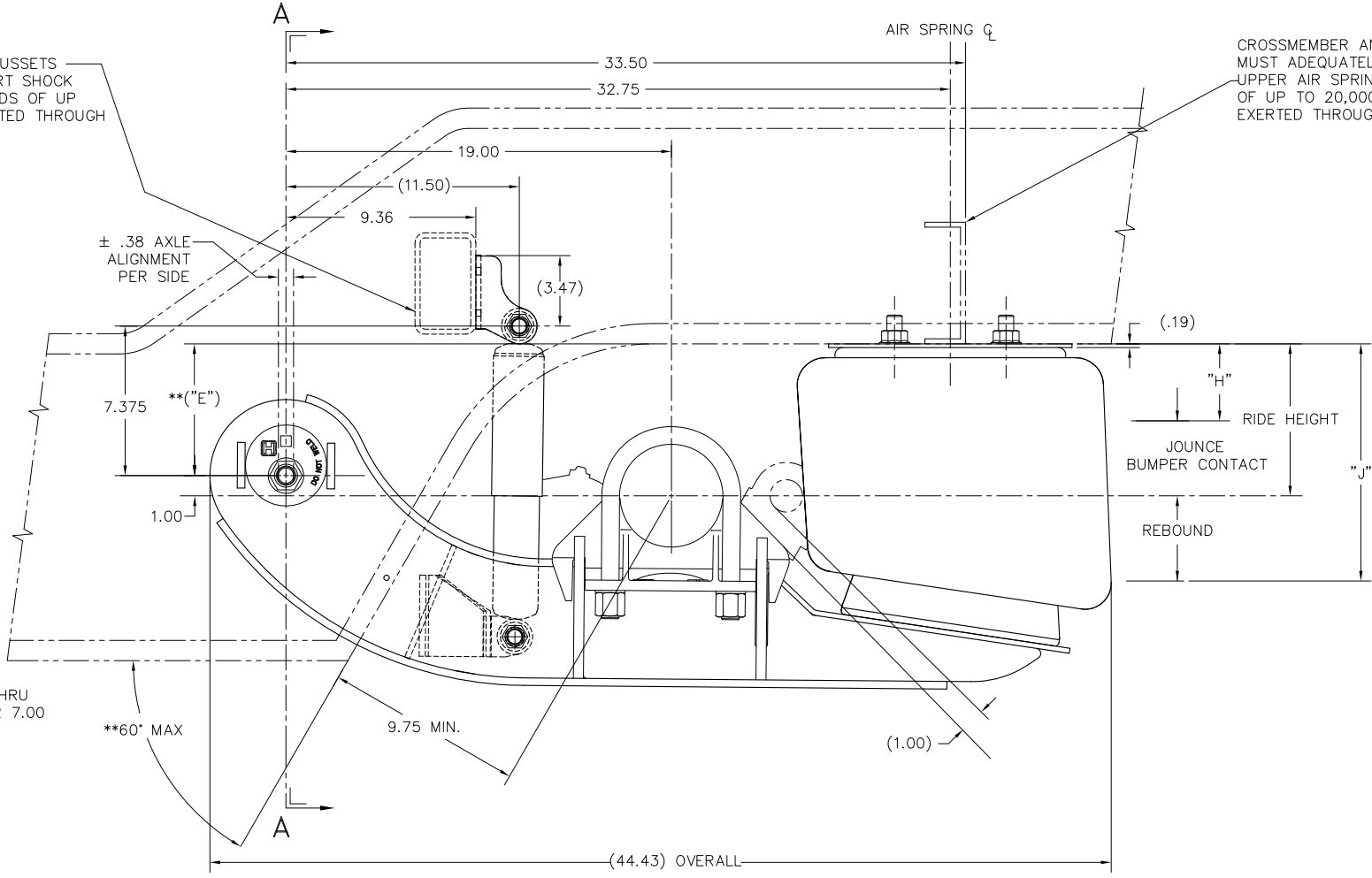
- NOTES:
- SUGGESTED CROSSMEMBER LOCATIONS ARE SHOWN. ACTUAL SIZE AND SHAPE MAY VARY WITH TRAILER DESIGN. IT IS THE RESPONSIBILITY OF THE SUSPENSION INSTALLER TO ENSURE STRUCTURAL ADEQUACY OF TRAILER FRAME AND CROSSMEMBER.
 - REFER TO THE AXLE/Y-BEAM INSTALLATION SECTION OF L577 (HT INSTALLATION PROCEDURES) FOR INSTRUCTION ON INSTALLING THE PIVOT BUSHING TUBE SLEEVES AND ASSEMBLIES INTO THE TRAILER FRAME.
 - * SYMBOL DENOTES TO ADD 6.0 INCHES FOR 102.0 INCH WIDE TRAILERS.
 - SUSPENSION CAPACITY: 30,000 LB AT GROUND.
 - SEE L579, ALIGNMENT PROCEDURES, FOR QUIK-ALIGN[®] PIVOT CONNECTION ASSEMBLY.
 - RECOMMENDED BRAKE CAMSHAFT AND BRAKE CHAMBER LOCATIONS MAY VARY SLIGHTLY BASED ON AXLE MANUFACTURERS RECOMMENDATIONS.
 - IT IS RECOMMENDED THAT THIS SUSPENSION BE USED IN CONJUNCTION WITH HT300US

- CLEARANCE SPECIFICATIONS:
- 1.0 INCH MINIMUM REQUIRED BETWEEN TOP OF THE TIRE AND BOTTOM OF TRAILER STRUCTURE WHEN AXLE IS AT FULL JOUNCE.
 - 2.0 INCHES MINIMUM REQUIRED BETWEEN INSIDE OF TIRE AND TRAILER STRUCTURE FOR LATERAL MOVEMENT.
 - 1.0 INCH MINIMUM CLEARANCE MUST BE MAINTAINED AROUND AIR SPRING WHEN IT IS AT MAXIMUM DIAMETER.
 - ALLOW 1.5 INCHES AROUND FORWARD SECTION OF BEAM ASSEMBLY FOR SUSPENSION MOVEMENT.



CROSSMEMBERS AND/OR GUSSETS MUST ADEQUATELY SUPPORT SHOCK ABSORBER BRACKETS. LOADS OF UP TO 8000 LB CAN BE EXERTED THROUGH EACH SHOCK ABSORBER.

CROSSMEMBER AND/OR GUSSETS MUST ADEQUATELY SUPPORT UPPER AIR SPRING PLATE. LOADS OF UP TO 20,000 LB CAN BE EXERTED THROUGH AIR SPRING BUMPER.



FORWARD

TORQUE SPECIFICATIONS		
DESCRIPTION	SIZE	TORQUE (FT-LB)
SHOCK BOLTS, UPPER	3/4-10	210-235
SHOCK BOLTS, LOWER	3/4-16	210-235
AIR SPRING NUTS, UPPER	3/4-16	80-100
AIR SPRING BOLTS, LOWER	1/2-13	25-35
U-BOLTS	7/8-14	475-525

HT300YB.XXX PART NUMBERS FOR USE WITH HT300US SUSPENSIONS ONLY

This Print remains the property of Hendrickson. All information contained thereon is confidential. It is loaned, subject to return on demand and on express condition that it is not to be copied or used directly or indirectly for any purpose other than the purpose for which it has been loaned to you.

UNLESS OTHERWISE NOTED: TOLERANCES ARE IN INCHES

XX: ± .1	XXX: ± .06	XXXX: ± .030	ANGULAR: ± 0.5°
----------	------------	--------------	-----------------

3RD ANGLE PROJECTION

DRAWN BY: J. HOFER 01-29-15

CHKD BY: C. RADCLIFF

APP'D BY: K. ERDMANN

HT300YB SUSPENSION INSTALLATION

D-35072

SCALE: .25=1.00

PAGE: 1 OF 1