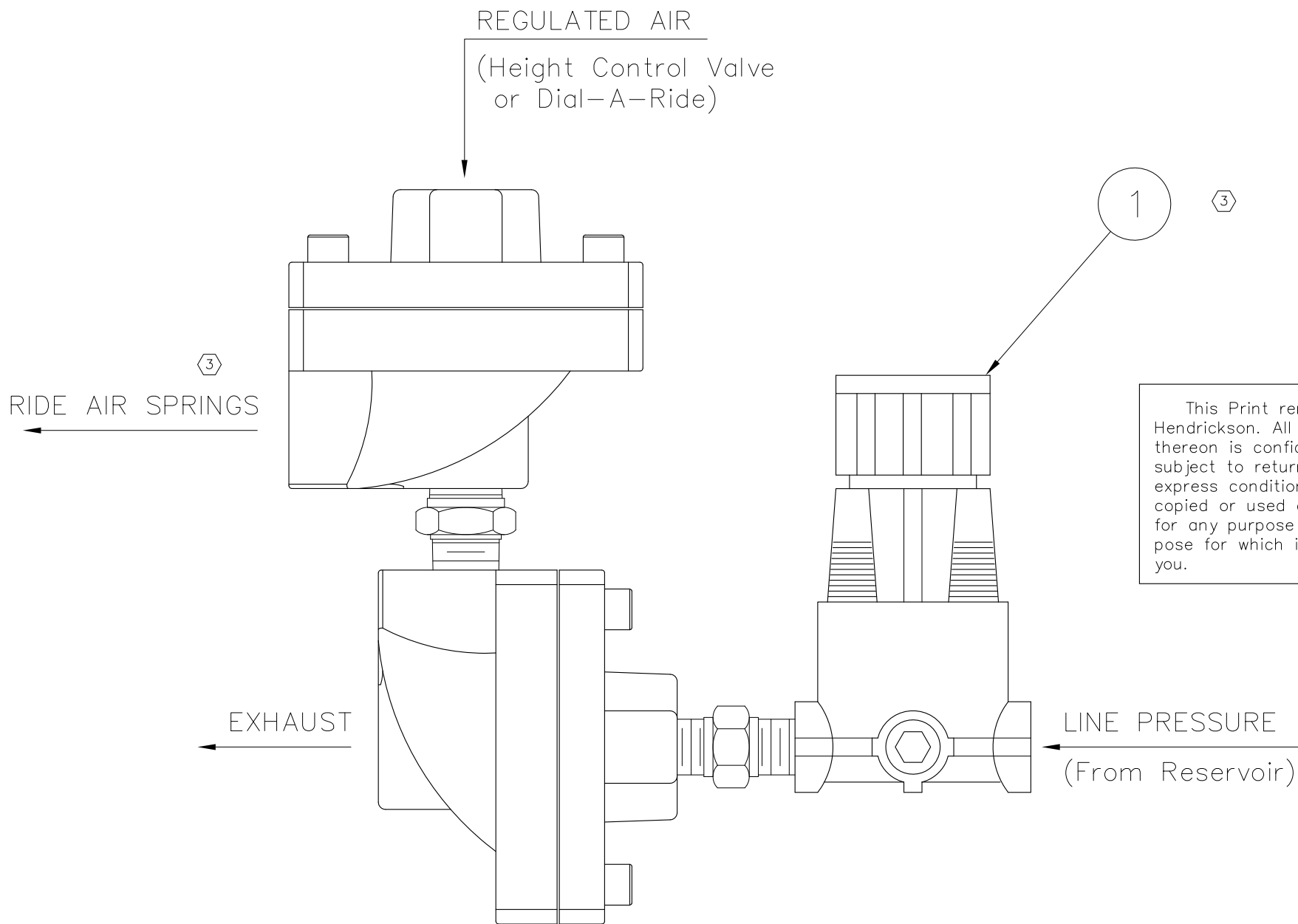


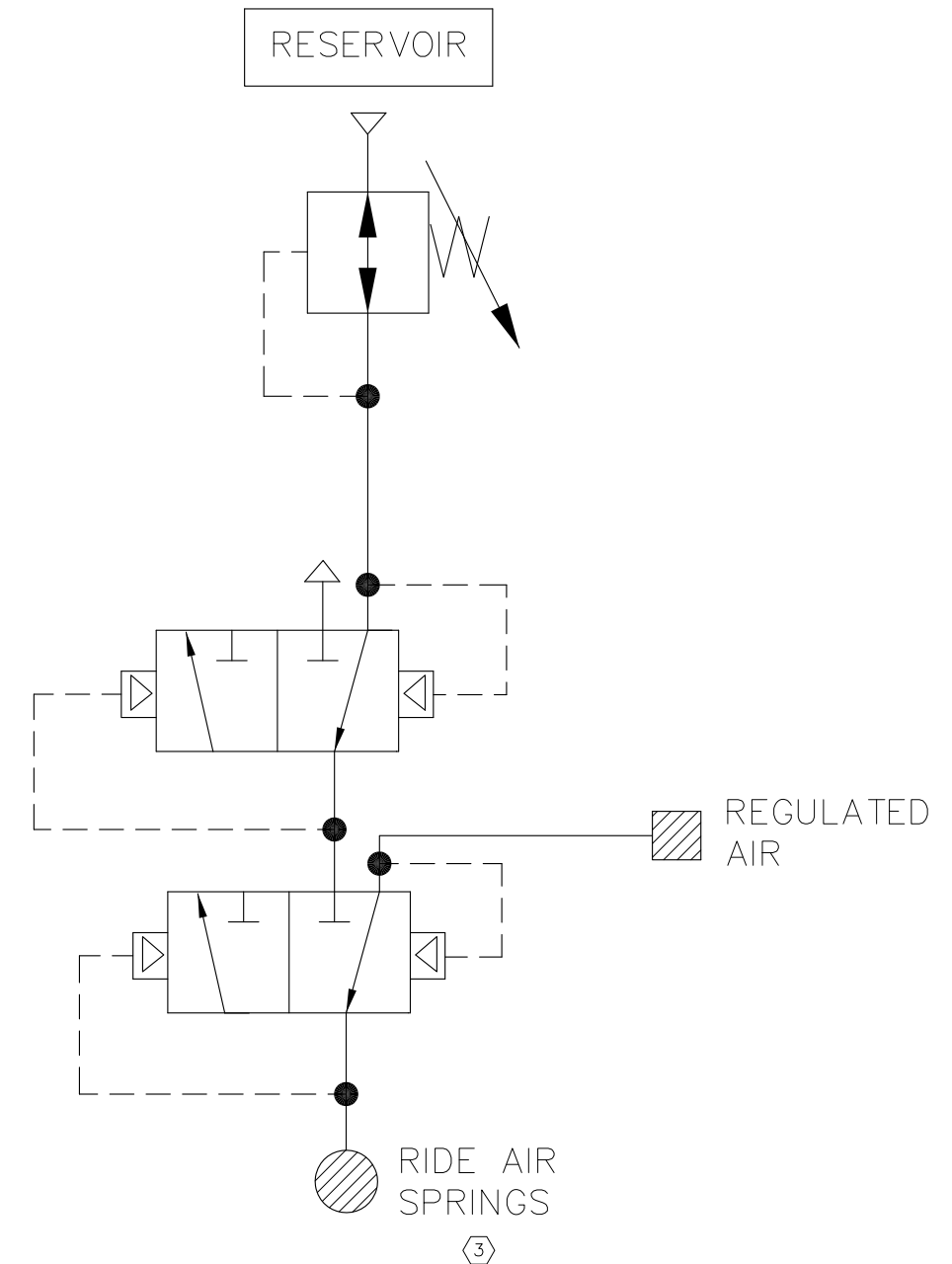
NOTES:

1. EXHAUST AIR SPRINGS COMPLETELY.
2. INSTALL PLUMBING PER DRAWING.
3. INFLATE AIR SPRINGS BY ADJUSTING YELLOW KNOB ON REGULATOR UNTIL AIR SPRINGS JUST BEGIN TO INFLATE.
4. ENERGIZE AIR CONTROL SYSTEM TO INFLATE AIR SPRINGS.
5. DE-ENERGIZE SYSTEM (EXHAUST AIR SPRINGS). AIR SPRINGS SHOULD DEFLATE AND LOWER COMPLETELY BUT NOT COLLAPSE.
6. IF AIR PRESSURE IS TOO HIGH OR LOW, IN EXHAUST MODE, REPEAT PROCEDURE FROM STEP #3.
7. AFTER DESIRED EXHAUST PRESSURE IS ACCOMPLISHED, LOCK THE REGULATOR BY PUSHING DOWN ON YELLOW KNOB.
8. THE SYSTEM IS NOW INSTALLED AND NO FURTHER ADJUSTMENTS OR MAINTENANCE SHOULD BE REQUIRED.

ITEM	PART NO.	DESCRIPTION <sup>③</sup>	QTY.
1	B-14945	AIR PRESSURE RETAINING KIT	1
2	DWG B-12458	AK-136-1 AIR KIT DRAWING	1



This Print remains the property of Hendrickson. All information contained thereon is confidential. It is loaned, subject to return on demand and on express condition that it is not to be copied or used directly or indirectly for any purpose other than the purpose for which it has been loaned to you.



UNLESS OTHERWISE NOTED:  
TOLERANCES ARE: DIMENSIONS ARE: INCHES

.X: ± .1	3	7369	CLA	5-11-98
.XX: ± .06	2	5820	CLA	7-1-96
.XXX: ± .030	1	4878	LLL	11-15-94
ANGULAR: ± 0.5°	3RD ANGLE PROJECTION			
DIMENSIONS ADHERE TO ANSI Y14.5M-1982				

REV.	ECN NO.	BY	DATE
3		CLA	5-11-98
2		CLA	7-1-96
1		LLL	11-15-94

DRAWN BY	L. LARKE	DATE	1-7-90
CHK'D BY	J. SUKOSD		
APP'D BY:	R. FRANKS		

THIS DRAWING IS THE CONFIDENTIAL PROPERTY OF HENDRICKSON