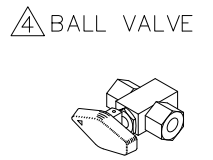
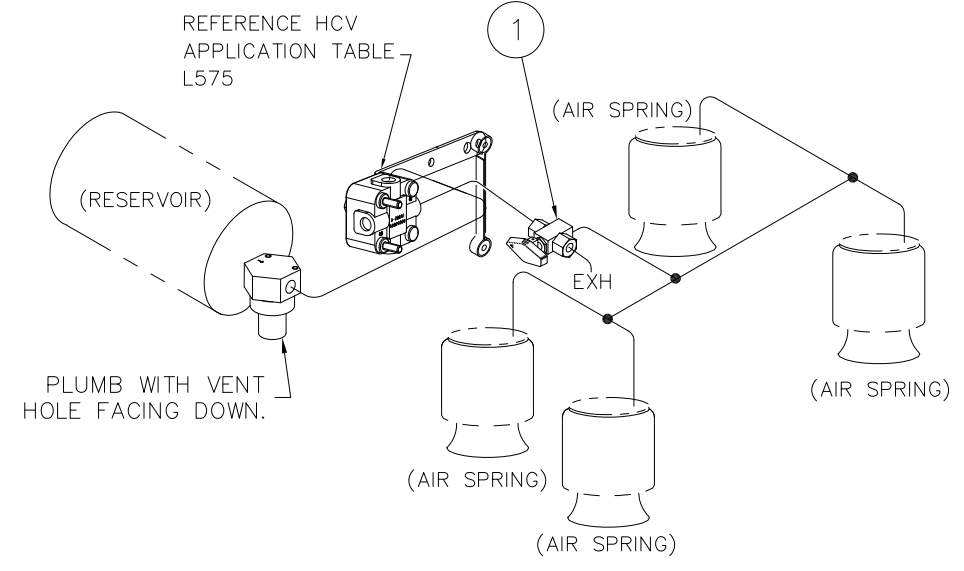
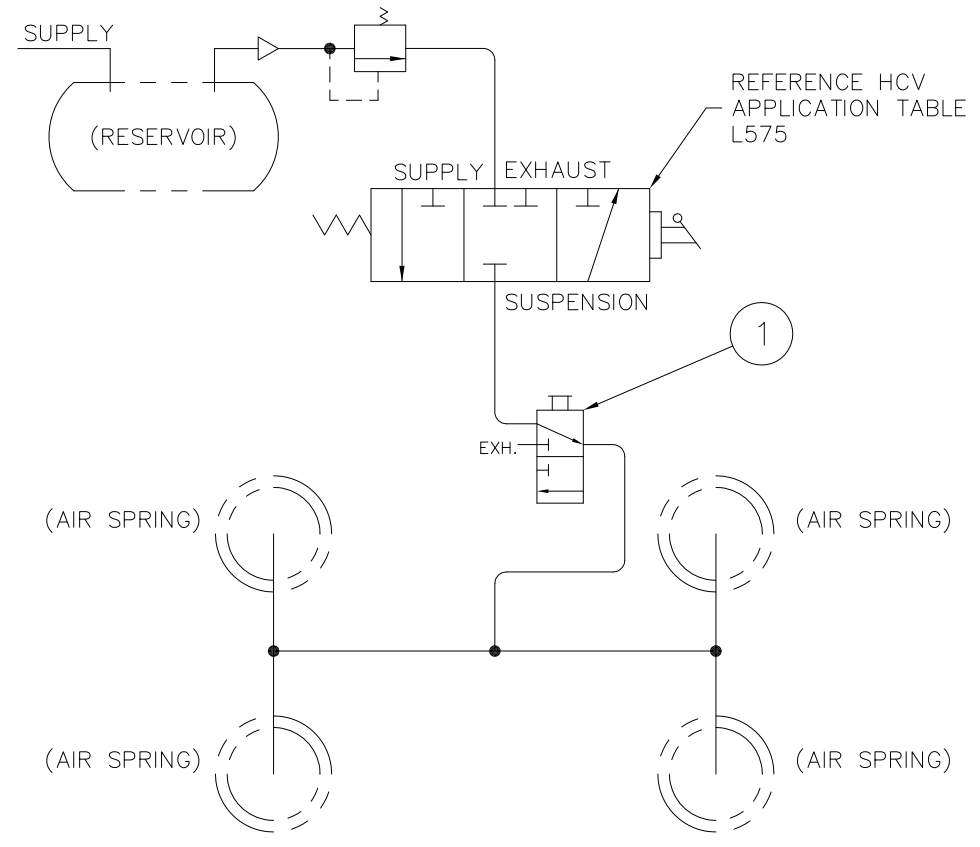



ITEM #1


AK-147-1			
QTY	ITEM	PART NO.	DESCRIPTION
1	1	A-22535	BALL VALVE 3-WAY
1	2	DWG C-14153	AK-147 KIT DRAWING



**NOTES:**


1. AIR LINE FITTINGS AND LINES TO BE FURNISHED BY INSTALLER. 3/8" O.D. POLYIMIDE TUBING
  2. MOUNT HEIGHT CONTROL VALVE ON REAR MOST AXLE OF TANDEM OR CENTER AXLE OF TRIAXLE.
  3. KEEP ALL AIR LINES AS SHORT AS POSSIBLE, MINIMIZING BENDS AND 90° FITTINGS.
-  TO DUMP AIR SPRING TURN POINTER ON VALVE KNOB TOWARD EXH., BALL VALVE DOES NOT HAVE PORTING DESIGNATION. PLUMB AS SHOWN IN ISOMETRIC VIEW.

**OPERATION:**

ALL AXLES ARE NORMALLY CONTROLLED BY THE SINGLE HEIGHT CONTROL VALVE, MAINTAINING CONSTANT RIDE HEIGHT REGARDLESS OF LOAD.

THE MANUAL EXHAUST VALVE WILL EXHAUST AIR FROM ALL AIR SPRINGS AND THE VEHICLE WILL DROP DOWN ONTO THE AIR SPRING RUBBER BUMPERS.

This Print remains the property of Hendrickson. All information contained thereon is confidential. It is loaned, subject to return on demand and on express condition that it is not to be copied or used directly or indirectly for any purpose other than the purpose for which it has been loaned to you.

 TRAILER SUSPENSION SYSTEMS 2070 INDUSTRIAL PLACE S.E., CANTON, OH 44707-2600 U.S.A.	UNLESS OTHERWISE NOTED: TOLERANCES ARE:	DIMENSIONS ARE: INCHES	8 19105 7 17642 6 16959 4a 13038	PSO 9-7-10 PSO 4-21-09 PSO 8-28-08 CLA 3-4-04	DRN'D BY: J. BURGESS CHK'D BY: G. SHENKLE APP'D BY: J. CERVANTEZ	DATE: 1-8-93 7-15-98	THIS DRAWING IS THE CONFIDENTIAL PROPERTY OF HENDRICKSON	SCALE: .25=1.00 (SIZE)	PAGE: 1 OF 1 DRAWING No.
	AIR CONTROL KIT AK-147							C-14153	