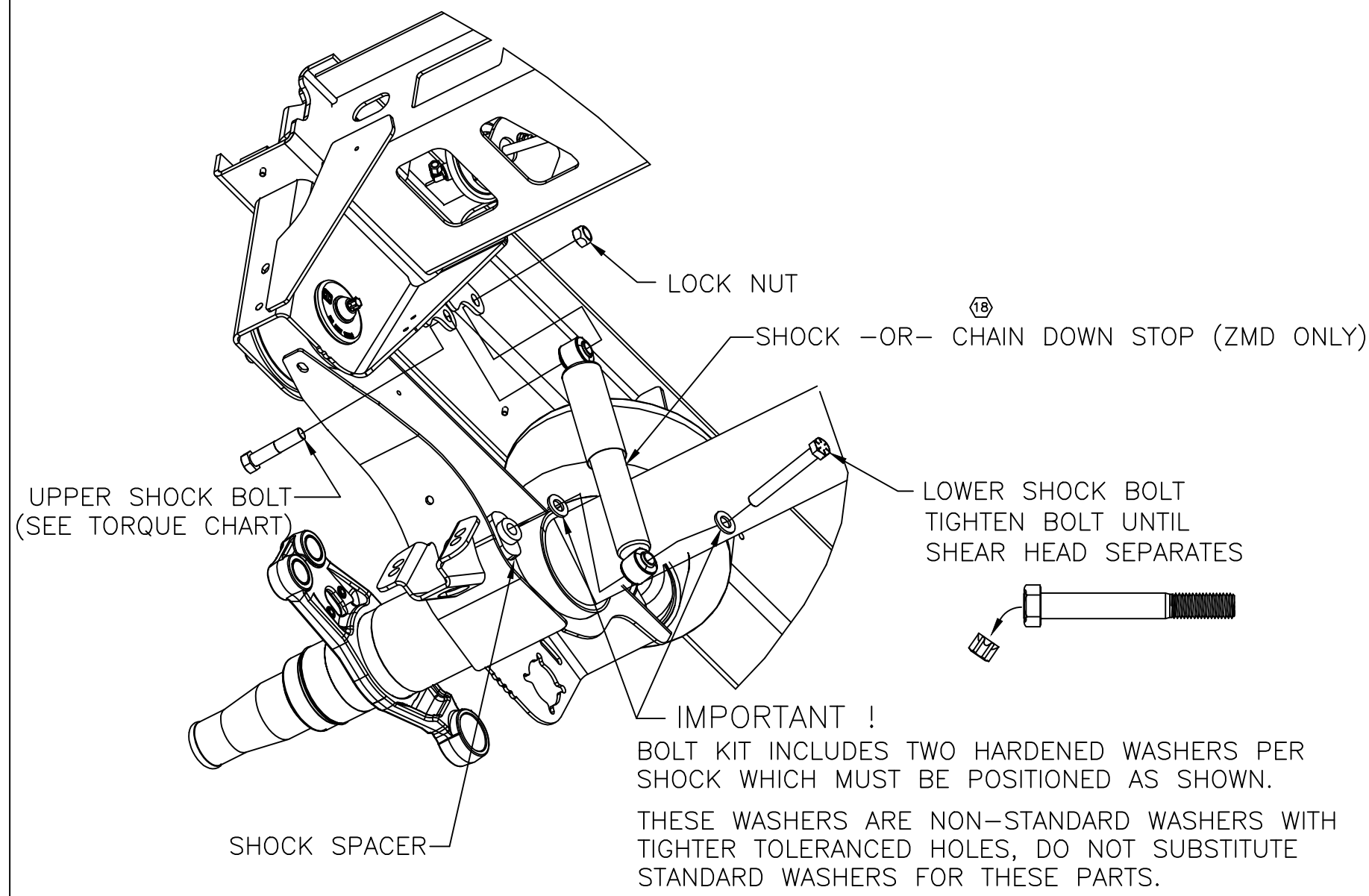


SHOCK INSTALLATION



ITEMS ORDERED SEPARATELY, SHIPPED LOOSE

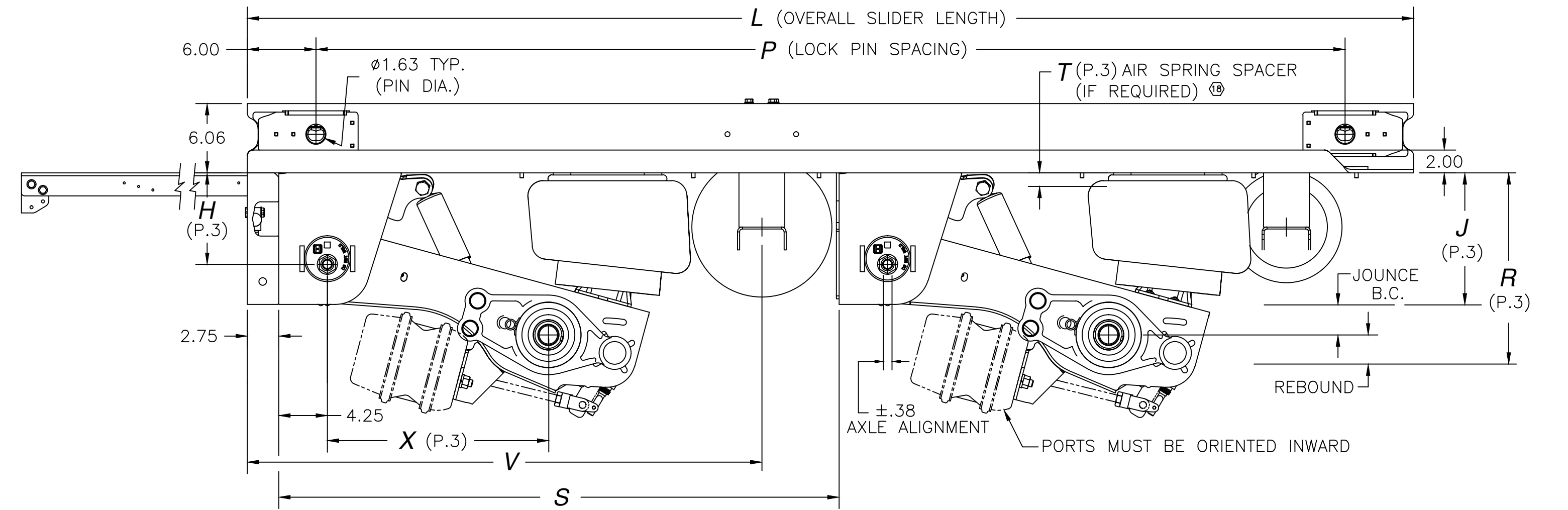
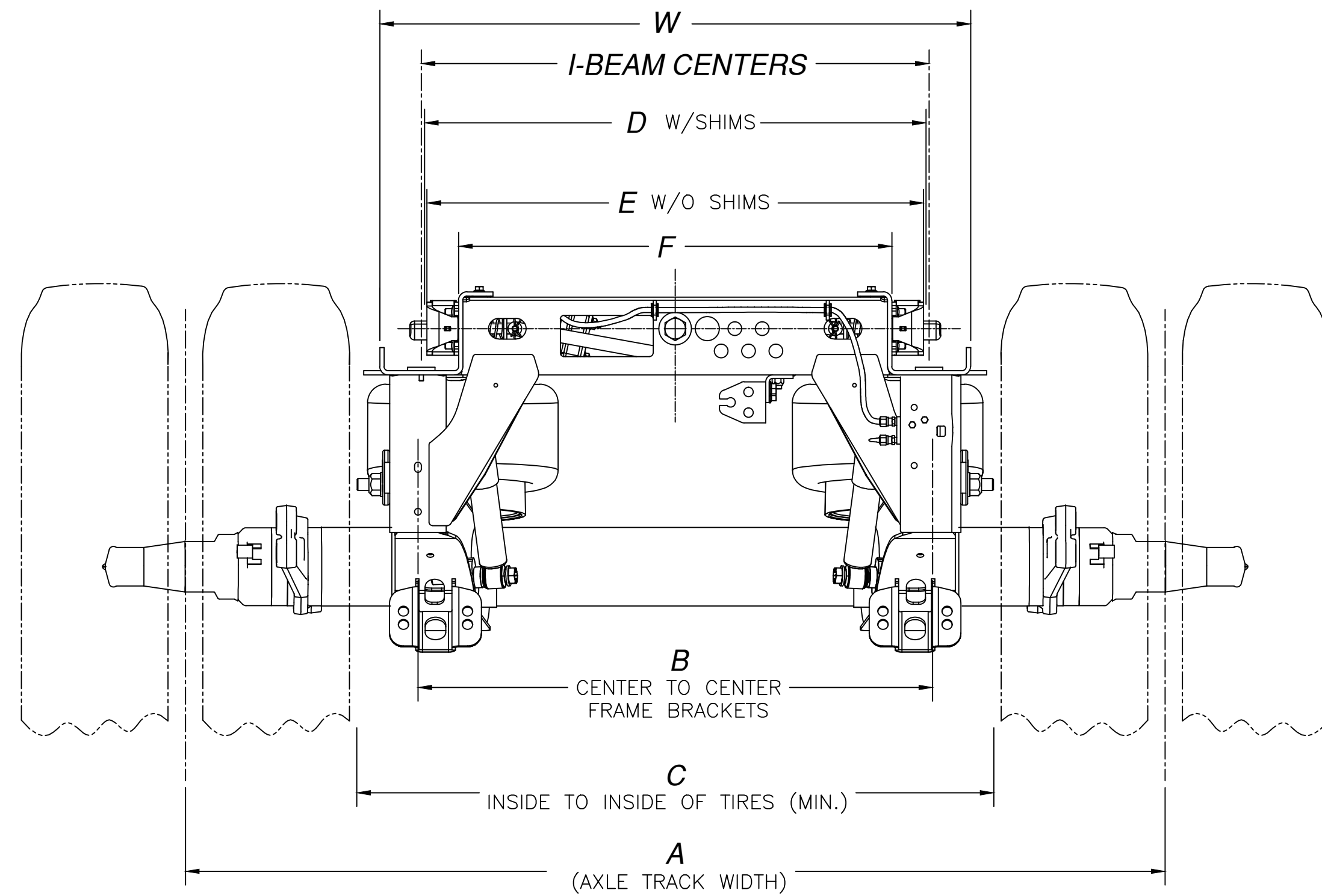
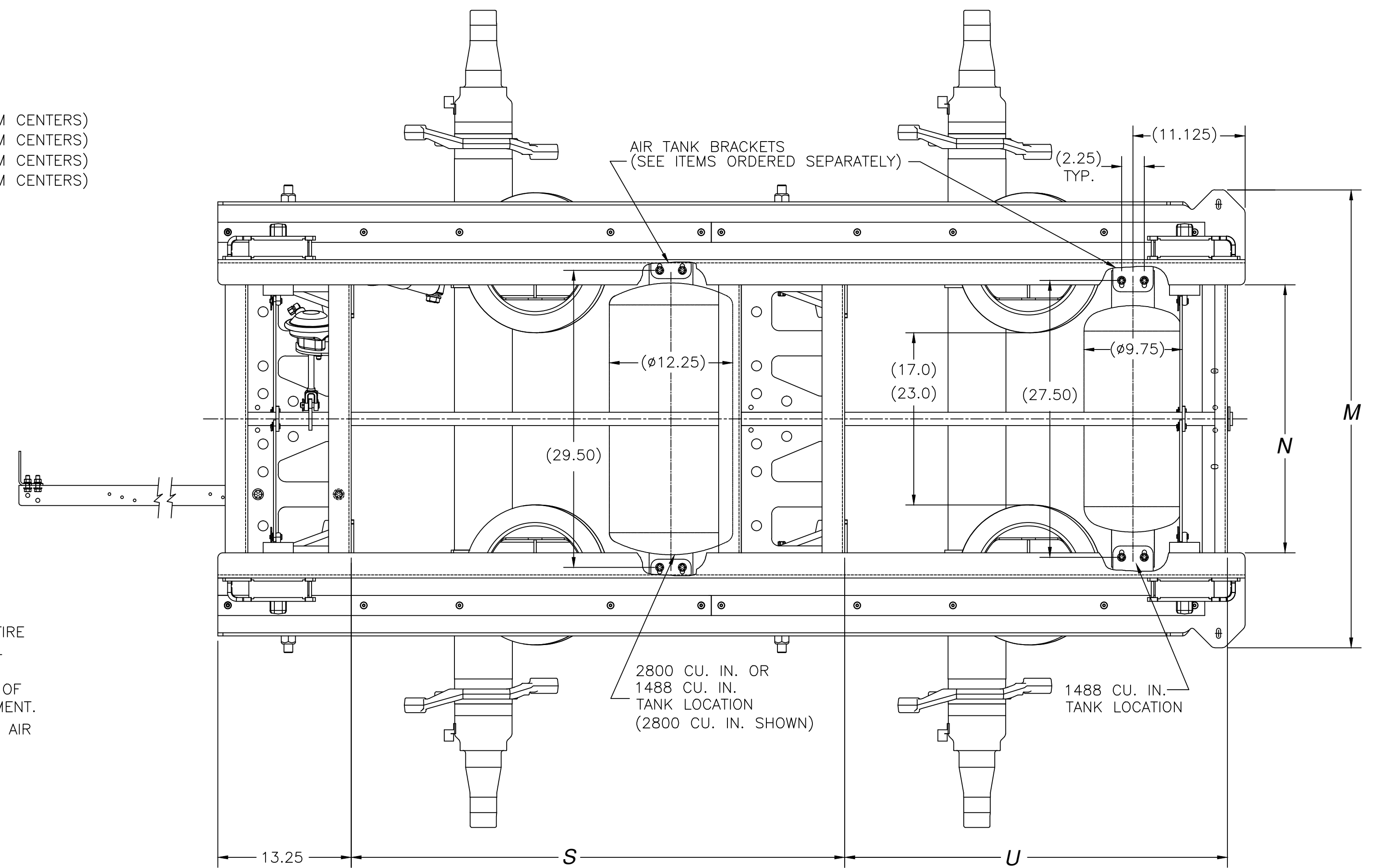
- 1. SPRAY GUARD MOUNTING ANGLE KIT:**
P/N S-22428-2 (37" & 38" I-BEAM CENTERS)
P/N S-22428-8 (43" & 44" I-BEAM CENTERS)
- 2. AIR TANK MOUNTING BRACKET KITS: (SEE PAGE 2)**
P/N S-27011-1 2800 CU. IN. TANK, (37" & 38" I-BEAM CENTERS)
P/N S-27011-2 2800 CU. IN. TANK, (43" & 44" I-BEAM CENTERS)
P/N S-27011-3 1488 CU. IN. TANK, (37" & 38" I-BEAM CENTERS)
P/N S-27011-4 1488 CU. IN. TANK, (43" & 44" I-BEAM CENTERS)
- 3. STINGER:**
S-27028-1 23.75 INCH (SHOWN PAGE 2)
- 4. SLIDER LOCATING BAR:**
LOCATING BAR NOT AVAILABLE FROM HENDRICKSON

NOTES:

1. SEE L-341 INTRAAX® INSTALLATION INSTRUCTIONS FOR INFORMATION ON ASSEMBLY, WELDING PROCEDURE, AND ALIGNMENT.
2. SEE SERVICE MANUAL FOR INFORMATION CONCERNING MAINTENANCE PROCEDURE.
3. SEE L-1182 FOR HEIGHT CONTROL KIT OPTIONS.
4. DO NOT WELD ON AXLE TUBE.
5. DO NOT WELD ON SLIDER BOX.
6. IT IS THE RESPONSIBILITY OF THE INSTALLER TO ENSURE PROPER VEHICLE FRAME DESIGN IN THE AREA OF SLIDER ATTACHMENT.

CLEARANCE SPECIFICATIONS:

- 1.0 INCH MINIMUM CLEARANCE REQUIRED BETWEEN TOP OF TIRE AND BOTTOM OF TRAILER STRUCTURE WHEN AXLE IS AT FULL JOUNCE.
- 2.0 INCHES MINIMUM CLEARANCE REQUIRED BETWEEN INSIDE OF TIRE AND TRAILER STRUCTURE FOR TIRE AND LATERAL MOVEMENT.
- .75 INCH MINIMUM CLEARANCE MUST BE MAINTAINED AROUND AIR SPRING WHEN IT IS AT MAXIMUM DIAMETER.



I-BEAM CENTERS	SLIDER/ SUSPENSION WIDTH DIMENSIONS (INCHES)								
	A	B	C	D	E	F	M	N	W
37"	71.5	37.5	46.50	36.61	36.25	31.63	45.50	26.63	43.13
38"	71.5	37.5	46.50	37.61	37.25	32.63	46.50	27.63	44.13
43"	77.5	43.5	52.50	42.61	42.25	37.63	51.50	32.63	49.13
44"	77.5	43.5	52.50	43.61	43.25	38.63	52.50	33.63	50.13

AXLE SPACING	SLIDER LENGTH DIMENSIONS (INCHES)				
	L	P	S	U	V
49"	102.0	90.0	49.0	38.0	45.0
60"	114.0	102.0	60.0	39.0	56.0
72"	126.0	114.0	72.0	39.0	63.0

This Print remains the property of Hendrickson. All information contained thereon is confidential. It is loaned, subject to return on demand and on express condition that it is not to be copied or used directly or indirectly for any purpose other than the purpose for which it has been loaned to you.

18



TRAILER COMMERCIAL VEHICLE SYSTEMS
2070 INDUSTRIAL PLACE S.E., CANTON, OH 44707-3000 U.S.A.

UNLESS OTHERWISE NOTED: TOLERANCES ARE: .XX: ± .01, .XXX: ± .030, ANGULAR: ± 0.2°. DIMENSIONS ARE IN INCHES. THIRD ANGLE PROJECTION. DIMENSIONS ADHERE TO ANSI Y14.5M-1982 REV. ECN NO. BY DATE

18	34089	JMD	08-19-20	DRAWN BY	K. GALIGHER
17	32211	J.E.W.	02-08-19	CHK'D BY	P. BILLMAN
16	24103	J.E.W.	03-25-15	APP'D BY	G. COPELAND
15	19695	CDP	5/18/11		

6-11-02
THIS DRAWING IS THE CONFIDENTIAL PROPERTY OF HENDRICKSON

AAZNT INSTALLATION DRAWING
TANDEM SLIDERS

*DRAWING PART NUMBER REVISION MUST MATCH REVISION OF DOCUMENT

PART NO.	DWG-D-27108	18	REV		P	PRODUCTION
SCALE	.125=1.000	SIZE	D	PAGE	1	OF 3
DRAWING NO.						D-27108

**** OPTION WEIGHT ADDITION (LB)		
OPTIONAL COMPONENT	I-BEAM CENTERS	
	37" & 38"	43" & 44"
SHIMS ON BOX (FOR EXTERNAL WEB HOLE REINFORCEMENT)	5.72	
16.5" X 7" HXS BRAKES	8.08	
16.5" X 8.625" HXS BRAKES	31.20	
EXTENDED SERVICE/HIGH-DAMPING SHOCKS	5.40	
LOW-PRESSURE AIR SPRINGS	15.20	
SEALED CLAMP-ON DUST SHIELDS	29.20	
SHOCK STRAPS	1.80	
HALDEX BRAKE CHAMBERS (STD. STROKE)	81.40	
HALDEX BRAKE CHAMBERS (LONG STROKE)	88.16	
HALDEX BRAKE CHAMBERS (LONG STROKE, EXTENDED WARRANTY)	88.68	
HALDEX SLACK ADJUSTERS (5.5"OR 6.0" LG.)	28.08	
AKH0270-3 HCV KIT (BOLTED LINK)	3.06	
STINGER KIT (23.75" LG)	10.02	
MUD FLAP MTG. ANGLE KIT	23.80	25.30
AIR TANK BRACKET KIT (2800 C.I. TANK)	7.54	8.80
AIR TANK BRACKET KIT (1488 C.I. TANK)	7.74	9.32

TORQUE SPECIFICATIONS		
DESCRIPTION	SIZE	TORQUE (FT-LB)
SHOCK BOLT, UPPER	3/4-10	210-235
SHOCK BOLT, LOWER	3/4-10	210-235
AIR SPRING NUTS, UPPER	3/4-16	80-100
AIR SPRING NUT, LOWER	1/2-13	55-60
S-CAM BEARING BOLTS	3/8-16	35-45
BRAKE CHAMBER MTG. NUTS	5/8-11	100-110
AIR ACTUATOR VALVE MTG. BOLTS	1/4-20	9-13
SPRAY GUARD BRACKET BOLTS	3/8-16	35-45
LOCK PIN BOX BOLTS	5/8-11	200-220
AIR ASSIST CHAMBER MTG. BOLTS	7/16-14	32-38
ACTUATOR AIR LINE FITTINGS	-----	25 MAX.
STINGER MTG. BOLTS	1/2-13	70-80
STINGER AIR LINE BRACKET	3/8-16	35-45
AIR TANK BRACKET BOLTS	3/8-16	35-45
AIR ASSIST CHAMBER JAM NUT	1/2-13	20-30

RIDE HEIGHT	JOUNCE	REBOUND	BUMPER CONTACT	CHAIN ENGAGEMENT	T	H	X	J	R	**SUSPENSION WEIGHT (LB)	
										STANDARD TRAVEL	
13.5	3.1	5.5	2.5	---	---	8.0	19.5	10.4	19.1 ^(B)	357.35 ^(B)	
14.0	3.6	5.0	3.0	---	---	8.0	19.4	10.4	19.1 ^(B)	357.35 ^(B)	
15.0	3.6	4.0	3.0	---	---	8.0	19.1	11.4	19.1 ^(B)	361.59 ^(B)	
16.0	3.6	4.9	3.1	---	---	10.0	19.4	12.4	20.9	363.29 ^(B)	
17.0	3.7	3.9	3.1	---	1.125	10.0	19.1	13.3	20.9	370.81 ^(B)	
ZMD TRAVEL ^(B)											
13.5	2.8	5.0	2.5	2.9	---	8.0	19.5	10.7	18.3	385.19	
14.0	3.3	4.6	3.0	2.4	---	8.0	19.4	10.5	18.3	385.19	
15.0	3.3	4.7	3.0	2.6	---	8.0	19.1	11.5	19.5	389.83	
16.0	2.9	5.4	2.6	3.3	1.875	10.0	19.4	11.1	19.4	397.61	
17.0	3.4	4.4	3.0	2.3	1.125	10.0	19.1	12.3	20.1	399.05	

*** AXLE WEIGHT (LB)			
I-BEAM CENTERS	STANDARD		SPINDLE TYPE
	37" & 38"	43" & 44"	
HN	504.96	523.52	HP
	513.88	532.52	

RIDE HEIGHT	* SLIDER BOX WEIGHT (LB)											
	49" TANDEM				60" TANDEM				72" TANDEM			
	I-BEAM CENTERS				I-BEAM CENTERS				I-BEAM CENTERS			
	37"	38"	43"	44"	37"	38"	43"	44"	37"	38"	43"	44"
13.5	^(B)	^(B)	^(B)	^(B)	^(B)	^(B)	^(B)	^(B)	^(B)	^(B)	^(B)	^(B)
14.0	583.27	587.07	606.24	610.06	616.79	620.59	639.76	643.58	650.33	654.13	673.30	677.12
15.0	^(B)	^(B)	^(B)	^(B)	^(B)	^(B)	^(B)	^(B)	^(B)	^(B)	^(B)	^(B)
16.0	597.51	601.31	620.48	624.30	631.03	634.83	654.00	657.82	664.57	668.37	687.54	691.36
17.0	^(B)	^(B)	^(B)	^(B)	^(B)	^(B)	^(B)	^(B)	^(B)	^(B)	^(B)	^(B)

*BOX WEIGHT INCLUDES: SLIDER BOX WELDMENT WITH FRAME BRACKETS, LOCK PINS AND ALL PIN PULL COMPONENTS (INCLUDING ACTUATOR VALVE, FITTINGS, ETC.), AND NO SHIMS (FOR TRAILERS WITH INTERNAL WEB REINFORCEMENT AT LOCK PIN HOLES).

** SUSPENSION WEIGHT INCLUDES: BEAMS, BUSHINGS, AXLE WRAPS, PIVOT CONNECTION COMPONENTS, AIR SPRING COMPONENTS, AND SHOCK ABSORBER COMPONENTS. WEIGHT IS TOTAL FOR TWO SUSPENSIONS.

*** AXLE WEIGHT INCLUDES: AXLE TUBE, SPINDLES, SPIDERS, STANDARD 16.5" X 7" BRAKE COMPONENTS, AND AXLE NUT KIT (BRAKE CHAMBERS AND SLACK ADJUSTERS NOT INCLUDED). WEIGHT IS TOTAL FOR TWO AXLES.

**** OPTION WEIGHT TABLE IS NOT ALL-INCLUSIVE; MANY ADDITIONAL OPTIONS ARE AVAILABLE. CONTACT HENDRICKSON ENGINEERING FOR WEIGHTS OF OPTIONS NOT LISTED IN CHART.

NOTES:

- TO OBTAIN TOTAL SYSTEM WEIGHT, ADD ONE ITEM EACH FROM SLIDER BOX, SUSPENSION & AXLE WEIGHT TABLES, PLUS ALL APPLICABLE OPTION WEIGHTS FROM OPTION WEIGHT TABLE.
- CONTACT HENDRICKSON FOR ALLOWABLE RIDE HEIGHT RANGES.
- JOUNCE AND REBOUND DIMENSIONS CHANGE AS THE RIDE HEIGHT CHANGES FROM THE NORMAL POSITION.
- DIMENSIONS "J" & "R" WILL REMAIN CONSTANT REGARDLESS OF RIDE HEIGHT VARIATION FROM NOMINAL POSITION.

This Print remains the property of Hendrickson. All information contained thereon is confidential. It is loaned, subject to return on demand and on express condition that it is not to be copied or used directly or indirectly for any purpose other than the purpose for which it has been loaned to you.

^(B)



UNLESS OTHERWISE NOTED, TOLERANCES ARE:	18	J4089	JMD	08-19-20	DRAWN BY	K.GALLIGHER	6-11-02
±	17	32211	JLW	02-08-19	CHK'D BY	S-9-02 P. BILLMAN	
±	16	24103	JLW	03-25-15	APP'D BY	G. COPELAND	
±	15	19695	CDR	5/18/11			

SCALE	1/8"	1/4"	3/8"	1/2"	3/4"	1"	1 1/2"	2"	3"	4"	6"	12"
SCALE	.25=1.00											
DWG NO.	D-27108											
REV	18											

AAZNT INSTALLATION DRAWING
TANDEM SLIDERS

PART NO.	# REV	P	
DWG D-27108	18	PRODUCTION	
SCALE	SIZE	PAGE	
.25=1.00	D	3 OF 3	
DRAWING NO.	D-27108		