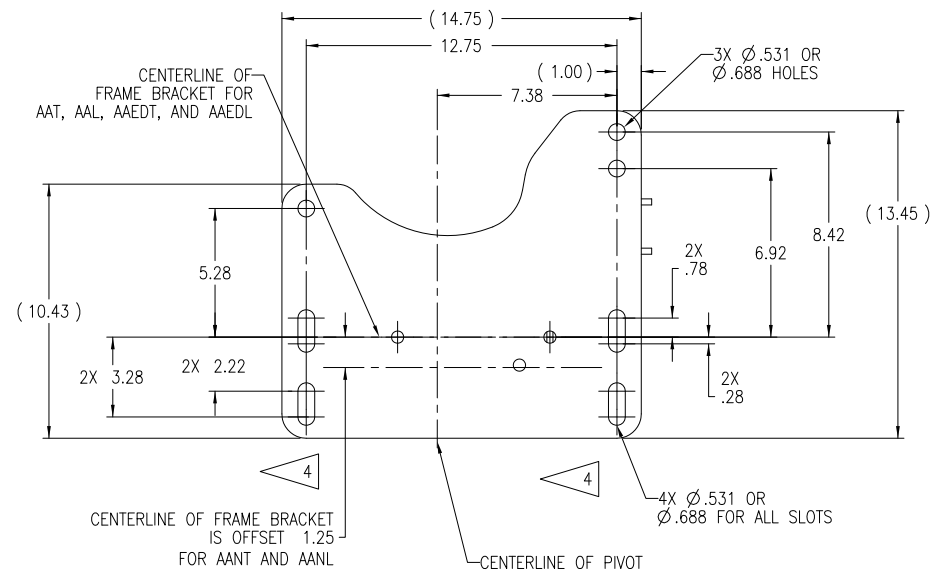
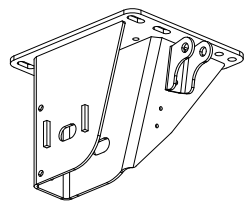
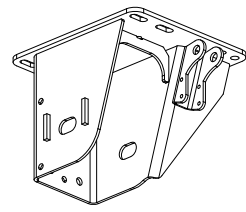


12" - 19" RIDE HEIGHT
STANDARD BOLT PATTERN
AND BOLT PATTERN 1, 2, AND 3
(ALL USE THE SAME MOUNTING PLATE)

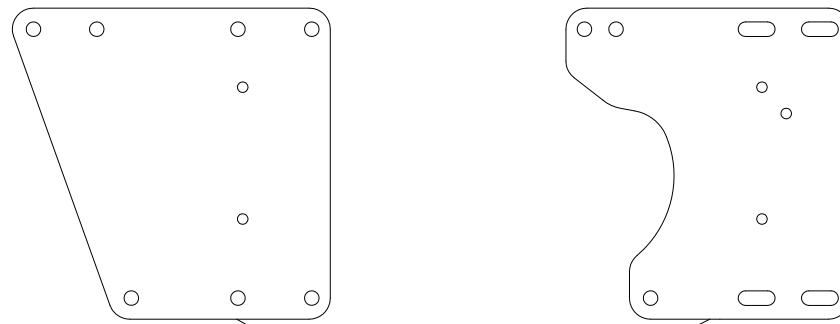


		HOLE SIZE / PATTERN	
SUSPENSION	RIDE HEIGHT	ϕ .53	ϕ .69
AAT, AAL, AAEDT, AAEDL	12" - 19"	STD	STD, P1, P3
AANT, AANL	12" - 19"	STD, P1, P2, P3	STD, P1, P2, P3
MOUNTING PLATE PART NUMBER:		C-32415-2/-4	C-32415-1/-3

AFTERMARKET CONVERSION AND GENERAL INSTALLATION INSTRUCTIONS

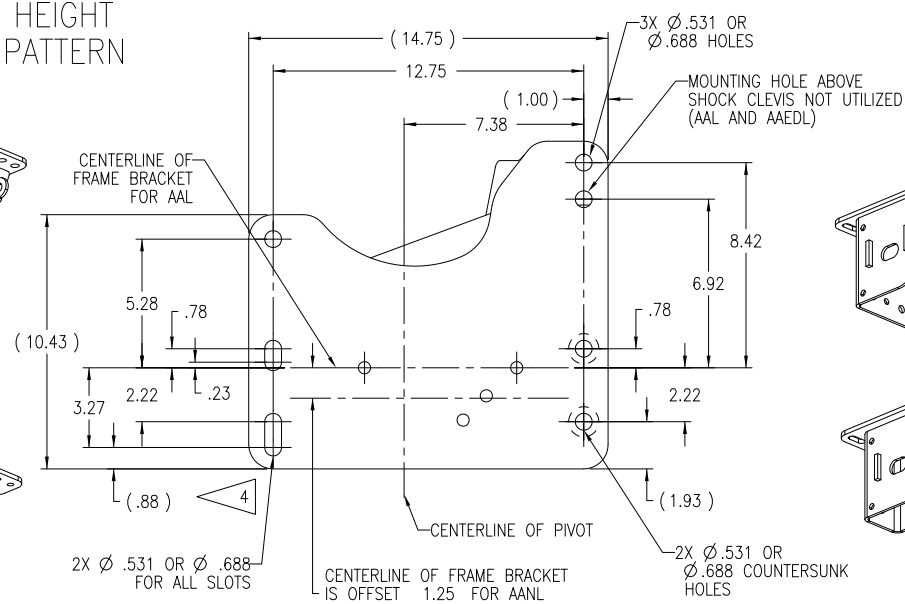
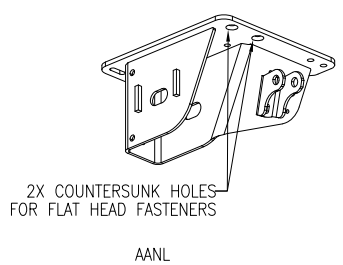
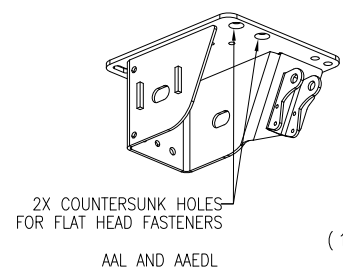
PREVIOUS

CURRENT



- HOLE A IS NO LONGER INCLUDED IN THE MOUNTING PLATES
 - MINIMUM OF 6 BOLTS REQUIRED TO FASTEN MOUNTING PLATE TO FRAME. HOLE B OR HOLE C CAN BE LEFT EMPTY. ALL OTHER HOLE OR SLOT LOCATIONS MUST BE USED.
 - HOLE C IS INACCESSIBLE ON AAL OR AAEDL, 6.5" THRU 9.0" RIDE HEIGHT MODELS, REQUIRING THE USE OF HOLE B
- *IMPORTANT: FAILURE TO USE HOLE B WHEN HOLE C IS NOT USED COULD RESULT IN BROKEN BOLTS AND DAMAGE TO FRAME BRACKETS AND TRAILER FRAME.
- 4 HARDENED WASHERS (PER ASTM F436) ARE REQUIRED FOR ALL SLOTTED HOLE LOCATIONS.
- HOLE A IN TRAILER FRAME IS NOT NEEDED. IF PRESENT, HENDRICKSON RECOMMENDS FILLING WITH A BOLT

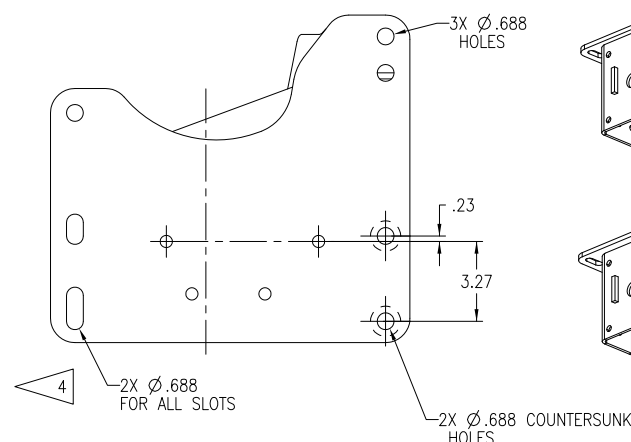
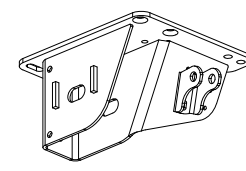
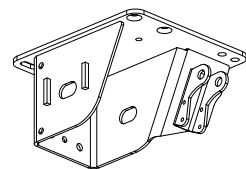
6.5" - 9" RIDE HEIGHT
STANDARD BOLT PATTERN



		HOLE SIZE / PATTERN	
SUSPENSION	RIDE HEIGHT	ϕ .53	ϕ .69
AAL, AAEDL	6.5" - 9"	STD	STD
AANL	6.5" - 9"	STD	STD
MOUNTING PLATE PART NUMBER:		C-32476-3/-4	C-32476-1/-2

6.5" - 9" RIDE HEIGHT
BOLT PATTERN 1

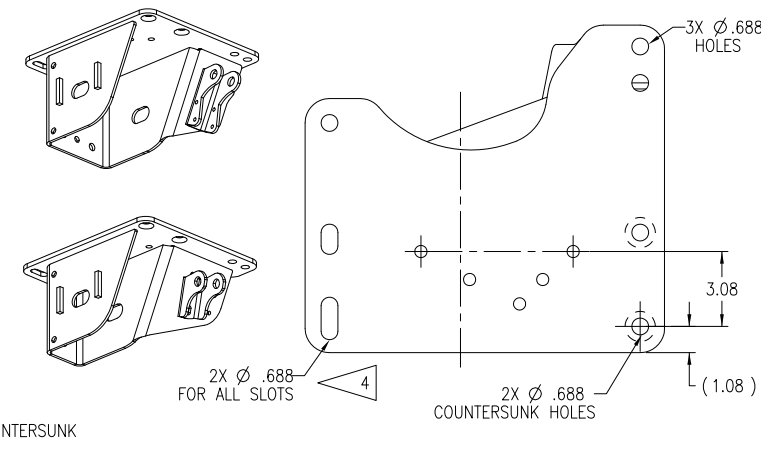
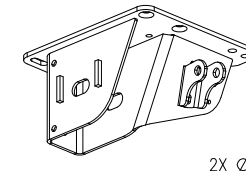
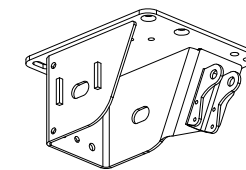
(ALL DIMENSIONS AND FEATURES SAME AS STANDARD PATTERN EXCEPT AS SHOWN)



		HOLE SIZE / PATTERN	
SUSPENSION	RIDE HEIGHT	ϕ .53	ϕ .69
AAL, AAEDL	6.5" - 9"	-	P1
AANL	6.5" - 9"	-	P1
MOUNTING PLATE PART NUMBER:		-	C-32488-1/-2

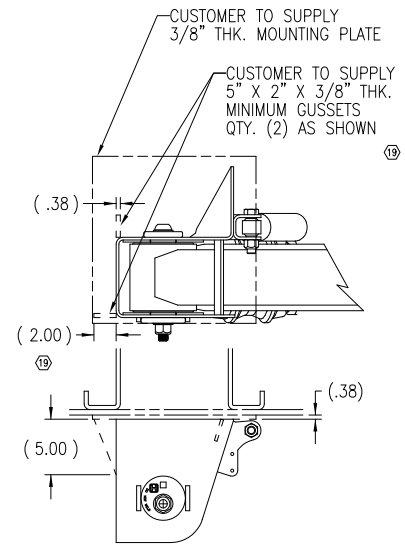
6.5" - 9" RIDE HEIGHT
BOLT PATTERN 3

(ALL DIMENSIONS AND FEATURES SAME AS STANDARD PATTERN EXCEPT AS SHOWN)



		HOLE SIZE / PATTERN	
SUSPENSION	RIDE HEIGHT	ϕ .53	ϕ .69
AAL, AAEDL	6.5" - 9"	-	P3
AANL	6.5" - 9"	-	P3
MOUNTING PLATE PART NUMBER:		-	C-32489-1/-2

CUSTOMER SUPPLIED
MOUNTING PLATE
AND GUSSETS



PRODUCTION

This print remains the property of Hendrickson. All information contained hereon is confidential, it is loaned, subject to return on demand, and on the express condition that it is not to be copied or used directly or indirectly for any purpose other than the purpose for which it has been loaned to you.

HENDRICKSON
TRAILER COMMERCIAL VEHICLE SYSTEMS
2070 INDUSTRIAL PLACE S.E. CANTON, OH 44707-2600 U.S.A.

UNLESS OTHERWISE NOTED:
TOLERANCES ARE:
X: ±
XX: ±
XXX: ±
ANGULAR: ±

19 32075 CDR 1/2/19
18 26252 ZAG 1/30/17
17 24910 RML 1/4/16
16 17420 CDR 2/17/09

DATE: 6-11-01
DRAWN BY: P. BILLMAN
CHECKED BY: G. SHENKLE
APPROVED BY: T. HESS

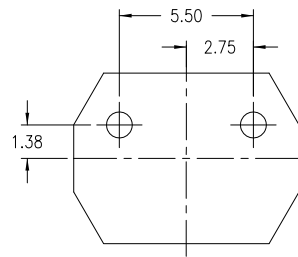
THIS DRAWING IS THE CONFIDENTIAL PROPERTY OF HENDRICKSON

INTRAAX[®] BOLT-ON MOUNTING DRAWING

SCALE: NTS
PAGE: 1 OF 3
D-26651

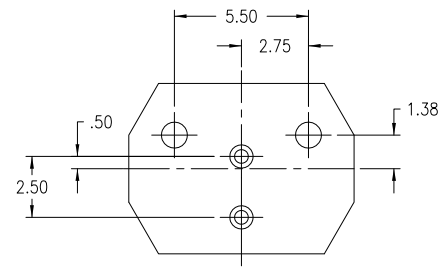
AIR SPRING MOUNTING INFORMATION

STANDARD WELD ON

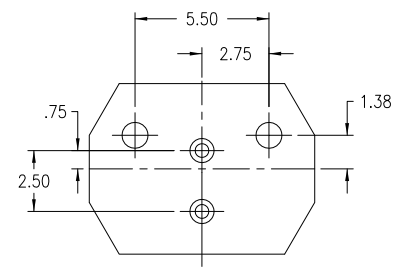


OCTAGONAL PLATE

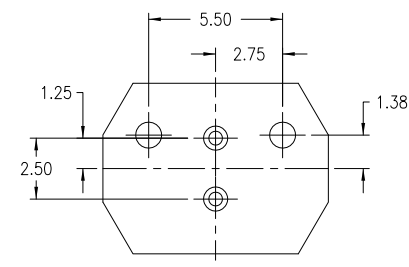
STANDARD BOLT-ON



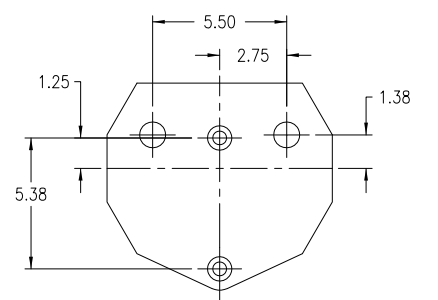
PATTERN 1 BOLT-ON



PATTERN 2 BOLT-ON



PATTERN 3 BOLT-ON



AIR SPRING PLATE SHAPE	AIR SPRING MOUNTING PATTERN	
	OCTAGONAL	ROUND
AAT, AAL, AANT, AANL, AANLS	STD	STD
AAEDT, AAEDL	STD	STD
PLATE PART NUMBER:	B-20905	B-23294
STEEL SPACER PART NUMBER:	C-22302	D-27049

AIR SPRING PLATE SHAPE	AIR SPRING MOUNTING PATTERN	
	OCTAGONAL	ROUND
AAT, AAL, AANT, AANL	STD	STD
AAEDT, AAEDL	STD	STD
PLATE PART NUMBER:	B-21145	B-24813
STEEL SPACER PART NUMBER:	-	-

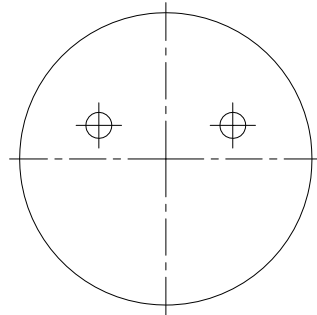
AIR SPRING PLATE SHAPE	AIR SPRING MOUNTING PATTERN	
	OCTAGONAL	ROUND
AAT, AAL, AANT, AANL	P1	P1
AAEDT, AAEDL	-	-
PLATE PART NUMBER:	B-21715	-
STEEL SPACER PART NUMBER:	-	D-26977 (PATTERN 1)

AIR SPRING PLATE SHAPE	AIR SPRING MOUNTING PATTERN	
	OCTAGONAL	ROUND
AAT, AAL, AANT, AANL	P2	P2
AAEDT, AAEDL	P2	P2
PLATE PART NUMBER:	B-22390	B-24812
STEEL SPACER PART NUMBER:	-	D-26977 (PATTERN 2)

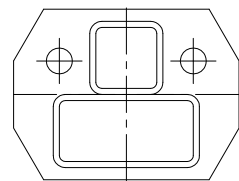
AIR SPRING PLATE SHAPE	AIR SPRING MOUNTING PATTERN	
	OCTAGONAL	ROUND
AAT, AAL, AANT, AANL	P3	P3
AAEDT, AAEDL	P3	P3
PLATE PART NUMBER:	B-27264	B-27781
STEEL SPACER PART NUMBER:	-	C-27772

19 SIDE MOUNT BOLT-ON MOUNTING INFORMATION

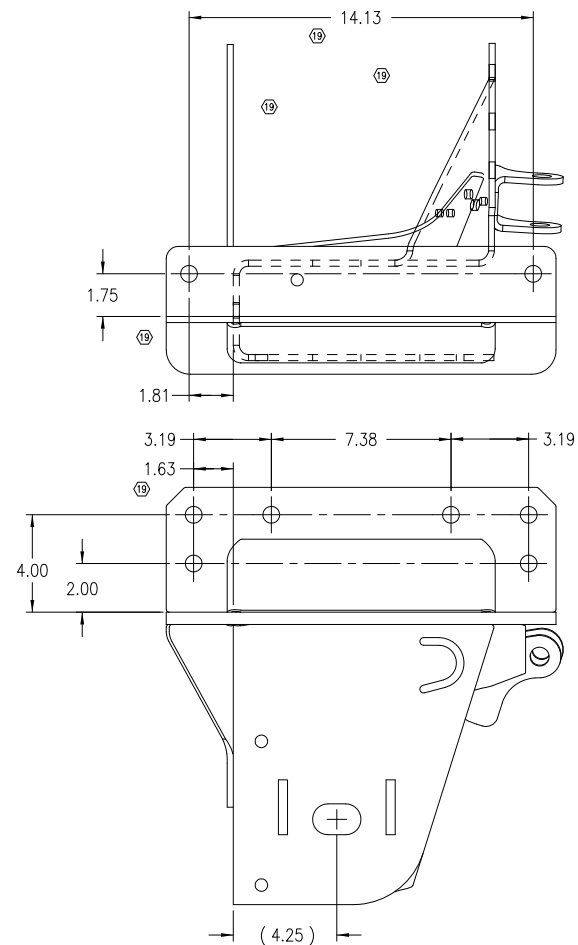
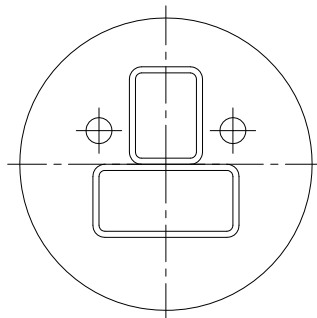
ROUND PLATE



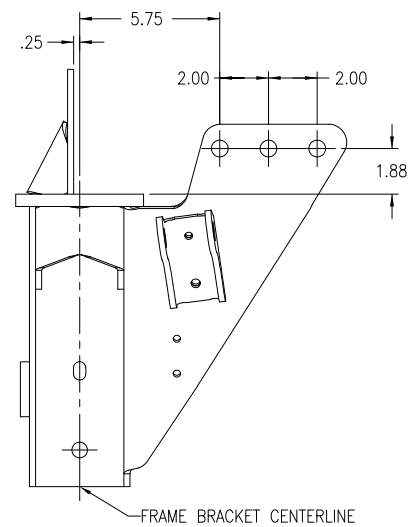
OCTAGONAL STEEL SPACER



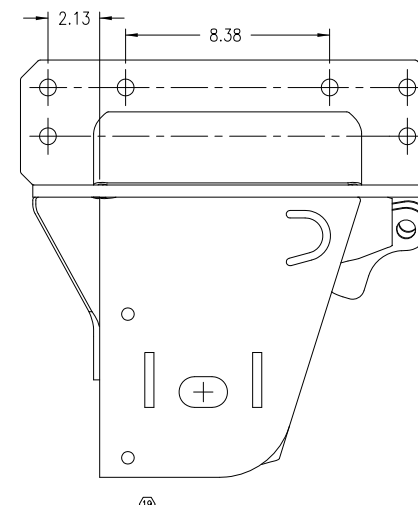
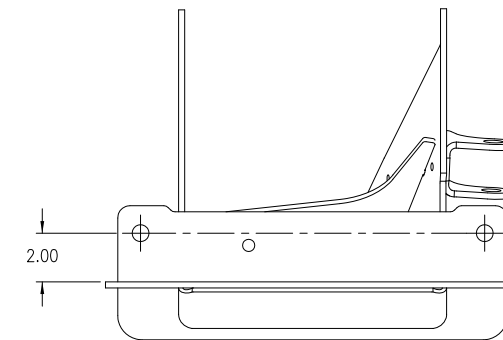
ROUND STEEL SPACER



STANDARD MOUNTING PATTERN

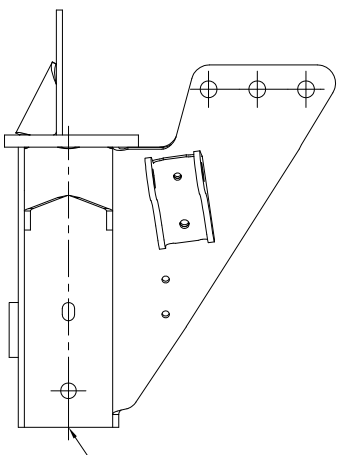
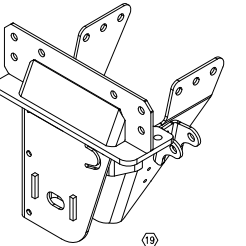


FRAME BRACKET CENTERLINE



MOUNTING PATTERN 1

(ALL DIMENSIONS AND FEATURES SAME AS STANDARD PATTERN EXCEPT AS SHOWN)



FRAME BRACKET CENTERLINE

This print remains the property of Hendrickson. All information contained hereon is confidential. It is loaned, subject to return on demand, and on the express condition that it is not to be copied or used directly or indirectly for any purpose other than the purpose for which it has been loaned to you.

HENDRICKSON
TRAILER COMMERCIAL VEHICLE SYSTEMS
2070 INDUSTRIAL PLACE S.E. CANTON, OH 44707-2600 U.S.A.

UNLESS OTHERWISE NOTED:		DIMENSIONS ARE:		INCHES/MILL	
TOLERANCES ARE:	19	32075	CDR	1/2/19	DRAWN BY: C. ANDERSON
XX: ±	18	26252	ZAG	1/30/17	CHECKED BY: K. GAUGHER
XXX: ±	17	24910	RML	1/4/16	APPROVED BY: W. SCHNEIDER
ANGULAR: ±	16	17420	CDR	2/17/09	
	REV.	ECN NO.	BY	DATE	

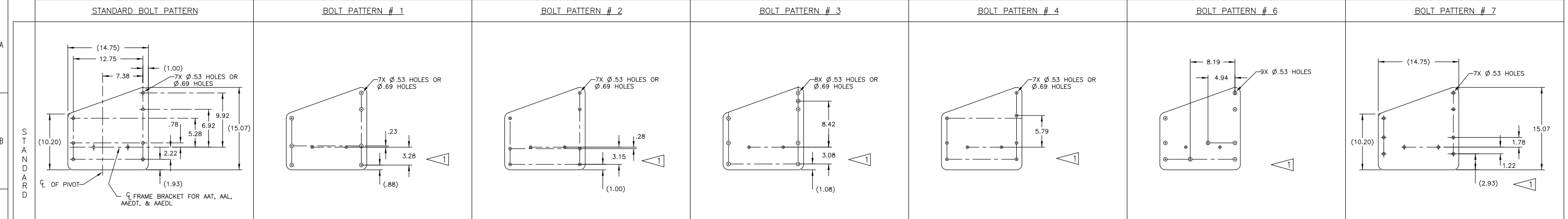
DATE: 5-2-02
THIS DRAWING IS THE CONFIDENTIAL PROPERTY OF HENDRICKSON

INTRAAX® BOLT-ON MOUNTING DRAWING

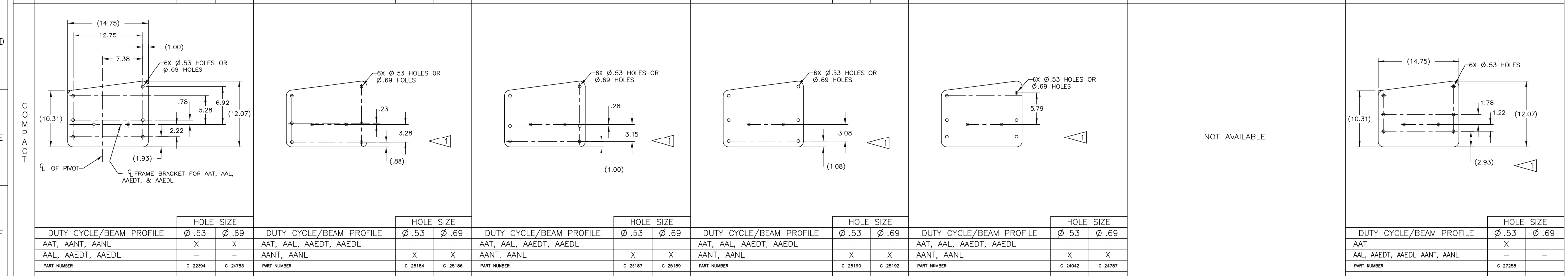
SCALE:	PAGE:
NTS	2 OF 3
D	D-26651

P PRODUCTION

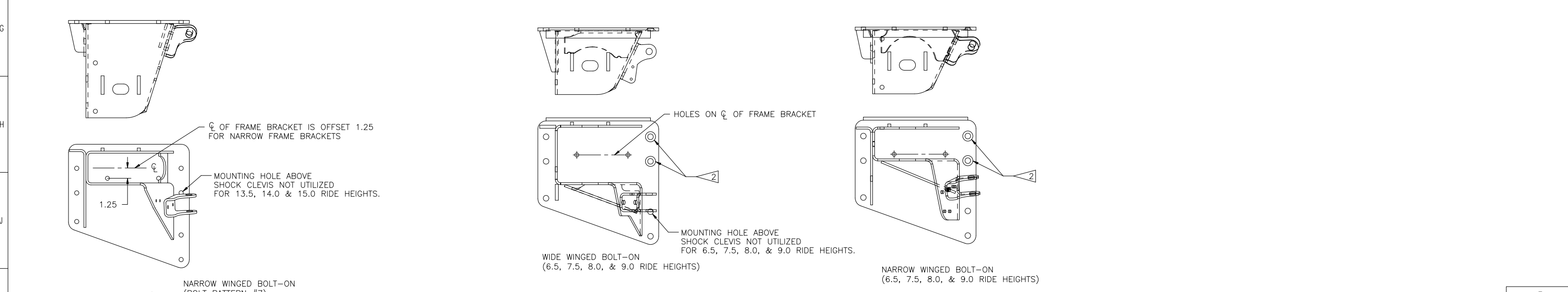
LEGACY BOLT PATTERNS – NOT AVAILABLE FOR CURRENT PRODUCTION



DUTY CYCLE/BEAM PROFILE	HOLE SIZE		DUTY CYCLE/BEAM PROFILE	HOLE SIZE		DUTY CYCLE/BEAM PROFILE	HOLE SIZE		DUTY CYCLE/BEAM PROFILE	HOLE SIZE		DUTY CYCLE/BEAM PROFILE	HOLE SIZE		DUTY CYCLE/BEAM PROFILE	HOLE SIZE	
	Ø .53	Ø .69		Ø .53	Ø .69		Ø .53	Ø .69		Ø .53	Ø .69		Ø .53	Ø .69		Ø .53	Ø .69
AAT, AAL, AAEDT, AAEDL	X	X	AAT, AAL, AAEDT, AAEDL	-	X	AAT, AAL, AAEDT, AAEDL	-	X	AAT, AAL, AAEDT, AAEDL	-	X	AAT, AAL, AAEDT, AAEDL	-	-	AAT	X	-
AANT, AANL	X	X	AANT, AANL	X	X	AANT, AANL	X	X	AANT, AANL	X	X	AANT, AANL	-	-	AAEDT	-	-
PART NUMBER	C-21092	C-24777	PART NUMBER	C-24775	C-21414	PART NUMBER	C-23245	C-24933	PART NUMBER	C-24778	C-15205	PART NUMBER	C-25181	C-25183	PART NUMBER	C-27644	C-24498
PART NUMBER W/ COUNTERSUNK HOLES	2		PART NUMBER W/ COUNTERSUNK HOLES	2		PART NUMBER W/ COUNTERSUNK HOLES	2		PART NUMBER W/ COUNTERSUNK HOLES	2		PART NUMBER W/ COUNTERSUNK HOLES	2		PART NUMBER W/ COUNTERSUNK HOLES	2	



DUTY CYCLE/BEAM PROFILE	HOLE SIZE		DUTY CYCLE/BEAM PROFILE	HOLE SIZE		DUTY CYCLE/BEAM PROFILE	HOLE SIZE		DUTY CYCLE/BEAM PROFILE	HOLE SIZE		DUTY CYCLE/BEAM PROFILE	HOLE SIZE	
	Ø .53	Ø .69		Ø .53	Ø .69		Ø .53	Ø .69		Ø .53	Ø .69		Ø .53	Ø .69
AAT, AANT, AANL	X	X	AAT, AAL, AAEDT, AAEDL	-	-	AAT, AAL, AAEDT, AAEDL	-	-	AAT, AAL, AAEDT, AAEDL	-	-	AAT, AAL, AAEDT, AAEDL	-	-
AAL, AAEDT, AAEDL	-	-	AANT, AANL	X	X	AANT, AANL	X	X	AANT, AANL	X	X	AANT, AANL	X	X
PART NUMBER	C-22394	C-24783	PART NUMBER	C-25184	C-25186	PART NUMBER	C-25187	C-25189	PART NUMBER	C-25190	C-25192	PART NUMBER	C-24042	C-24787



This print remains the property of Hendrickson. All information contained hereon is confidential, it is loaned, subject to return on demand, and on the express condition that it is not to be copied or used directly or indirectly for any purpose other than the purpose for which it has been loaned to you.

1 ALL MISSING DIMENSIONS ARE THE SAME AS STANDARD.

2 TWO COUNTERSUNK HOLES FOR FLAT HEAD FASTENERS. (AAL & AANL 6.5, 7.5, 8.0 & 9.0 RIDE HEIGHTS ONLY)

P
PRODUCTION

HENDRICKSON

TRAILER COMMERCIAL VEHICLE SYSTEMS
2070 INDUSTRIAL PLACE S.E. CANTON, OH 44707-2600 USA

UNLESS OTHERWISE NOTED:
TOLERANCES ARE:
X: ± .005
XX: ± .010
XXX: ± .015
ANGULAR: ± .010

3RD ANGLE PROJECTION

DRAWN BY: C. RADCLIFF
CHECKED BY: E. FABRIS
APPROVED BY: D. BALL

DATE: 2-Jan-19

THIS DRAWING IS THE CONFIDENTIAL PROPERTY OF HENDRICKSON

SCALE: NTS
PAGE: 3 OF 3

D-26651