

# H PARTS LIST

## PRIMAAX® EX / PRIMAAX® Rear Air Suspension for International Truck Vehicles

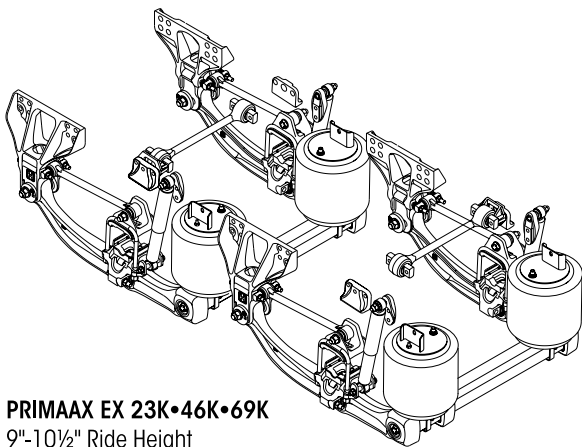
LIT NO: SP-233

DATE: December 2017

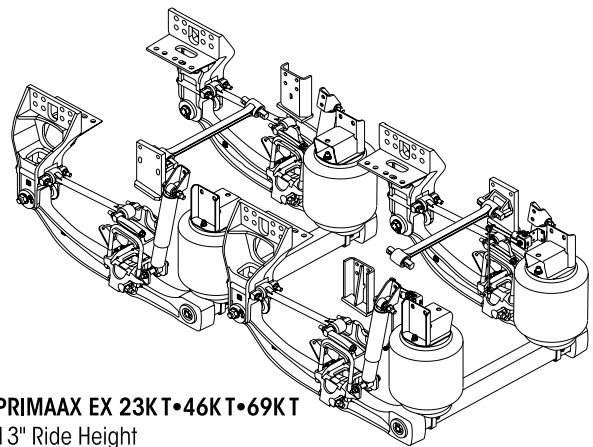
REVISION: C

### CONTENTS

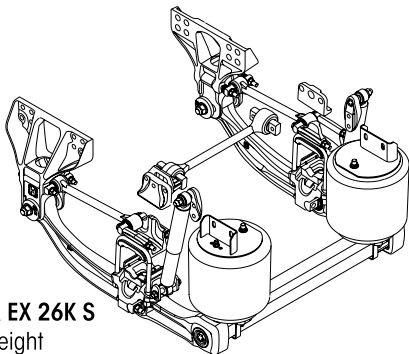
DESCRIPTION	PAGE	DESCRIPTION	PAGE
Technical Notes . . . . .	2	PRIMAAX	
Selection Guides . . . . .	3	■ 230 • 460 • 690 . . . . .	12
<b>PRIMAAX® EX</b>		Severe Service Kits . . . . .	14
■ 23K • 46K • 69K   26K S . . . . .	6	Notes . . . . .	14
■ 23K T • 46K T • 69K T . . . . .	8	Special Tools . . . . .	15
■ 26K • 52K • 78K . . . . .	10		



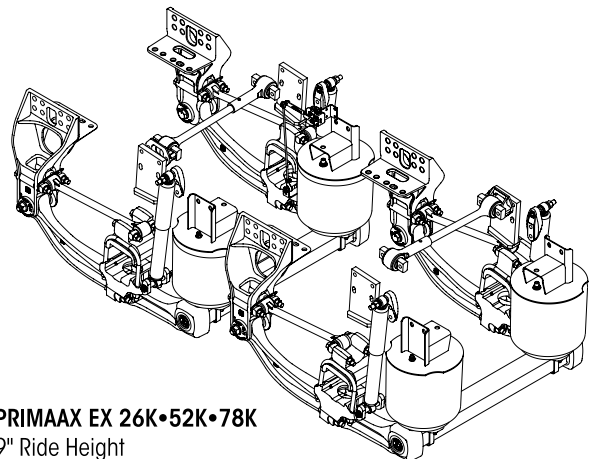
**PRIMAAX EX 23K•46K•69K**  
9"-10½" Ride Height



**PRIMAAX EX 23KT•46KT•69KT**  
13" Ride Height



**PRIMAAX EX 26K S**  
9" Ride Height



**PRIMAAX EX 26K•52K•78K**  
9" Ride Height



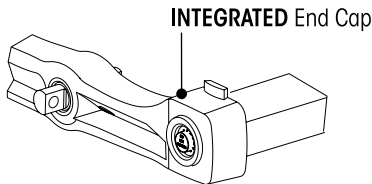
## Technical Notes

The following information is intended to assist in determining which suspension is equipped on the vehicle. As an example, in Figure 1, the end cap / frame hanger helps identify whether the suspension is the current model PRIMAAX EX or the previous production model PRIMAAX. Figure 2 identifies the ride height.

FIGURE 1

PRIMAAX EX • PRIMAAX

**PRIMAAX EX** | Enhanced U-beam Assembly with Integrated End Cap



**PRIMAAX** | Support Beam with Detachable End Cap

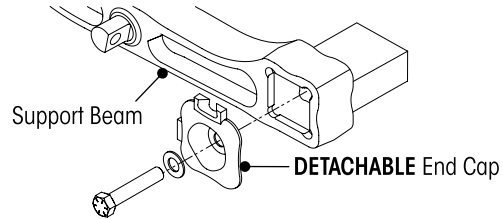
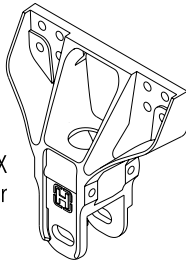


FIGURE 2

RIDE HEIGHT

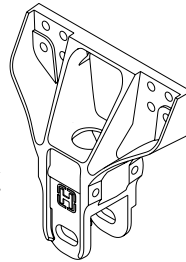
9" Ride Height

PRIMAAX EX / PRIMAAX  
Frame Hanger



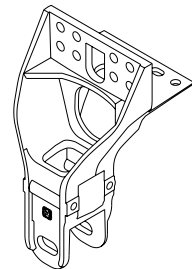
10½" Ride Height

PRIMAAX EX  
Frame Hanger

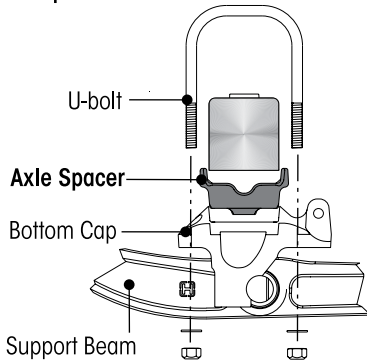


13" Ride Height

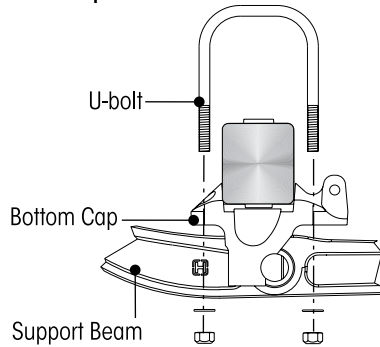
PRIMAAX EX  
Frame Hanger



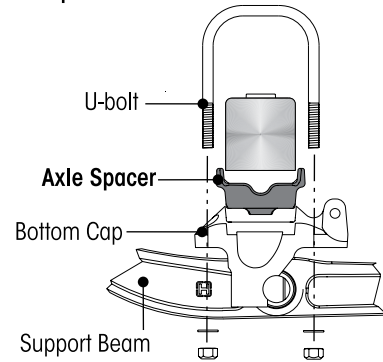
**AND**  
Axle Spacer



**AND**  
No Axle Spacer

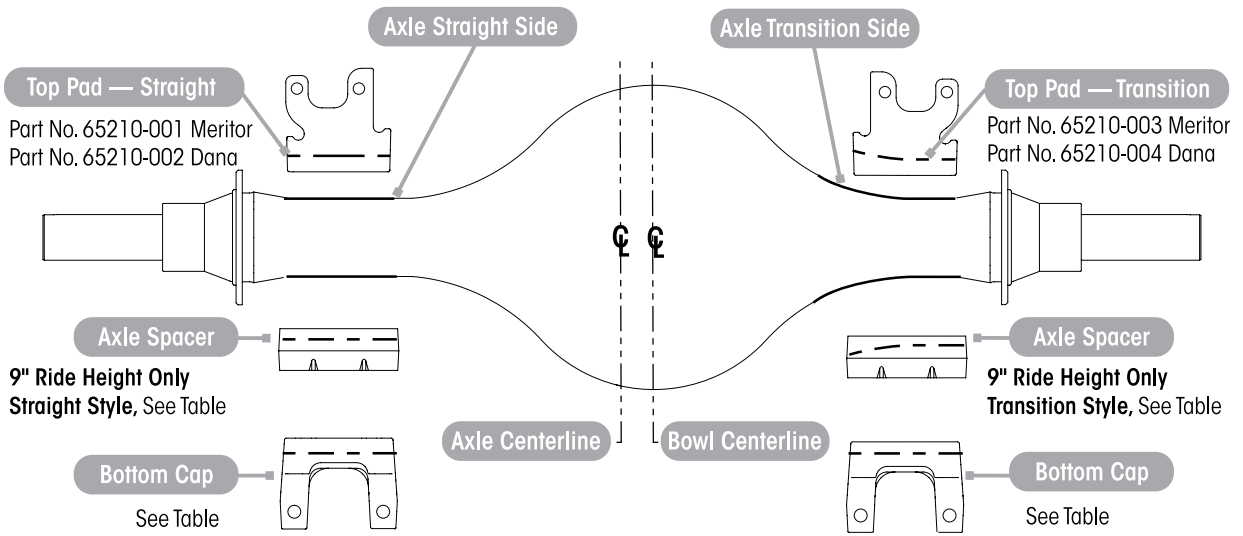


**AND**  
Axle Spacer





**Bottom Cap • Axle Spacer • Top Pad • Longitudinal Torque Rod**



Page 10		PRIMAAX EX 26K • 52K • 78K							
Axle Manufacturer	Beam Centers	Bottom Cap Part Number				Axle Spacer Part Number			
		Straight Side		Transition Side		Straight Side		Transition Side	
		FRONT	REAR	FRONT	REAR	FRONT	REAR	FRONT	REAR
MERITOR	40.0"	65208-001	65208-003	See Axle Spacer	65276-000		65277-000		
	40.5"				—		67973-004		
DANA	40.0"	65208-002	65208-004		65274-000		65275-000		
	40.5"				—		67973-002		



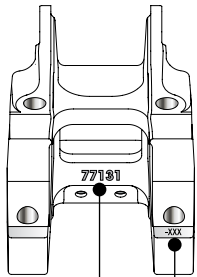
## Bottom Cap, Longitudinal Torque Rod and Top Pad Assembly

Page 6  
Page 8  
Page 12

PRIMAAX EX 23K • 46K • 69K | 26K S ■ 9", 10½" Ride Heights  
PRIMAAX EX 23KT • 46KT • 69KT ■ 13" Ride Height  
PRIMAAX 230 • 460 • 690 ■ 9" Ride Height

### DRUM BRAKES

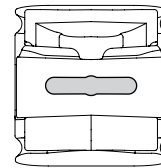
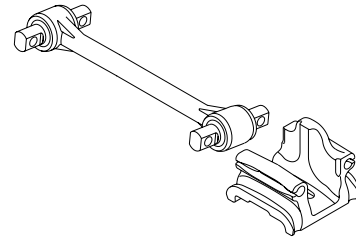
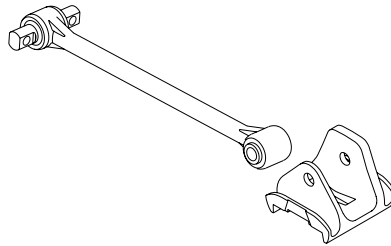
Pinion Angle	Bottom Cap Part No.*	Thru Bolt Style		Bar Pin Style	
		Longitudinal Torque Rod**	Top Pad	Longitudinal Torque Rod	Top Pad
2.5	60556-025	67274-510 67274-515 67274-540	65290-001	62000-640N	65289-000 65289-008
3.0	60556-030			62000-645N	
3.5	60556-035			62035-475N	
5.5	60556-055			62039-440N	
10.0	60556-100			62040-475N	
10.5	60556-105			62040-490N	
11.0	60556-110			62043-430N	



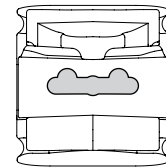
Casting No. Location

Location of etched last 3 digits of Part No. 60556-XXX

Bottom View



Part Number  
65289-000



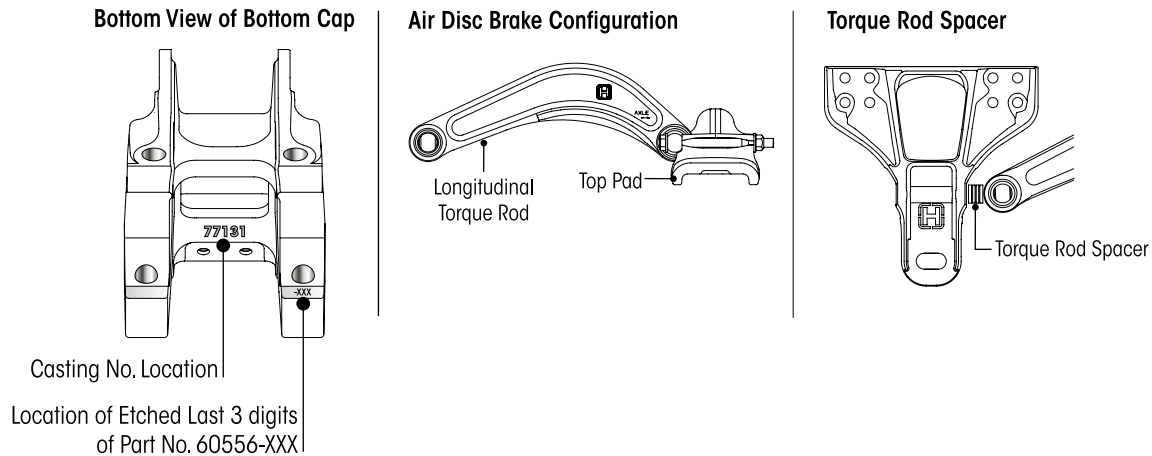
Part Number  
65289-008

Top View

- ◆ For specific part numbers see last three (3) digits etched on the bottom of the bottom cap as shown in the illustration above.
- ◆◆ Non-serviceable torque rod bushings, requires replacement of complete torque rod assembly with bushings.



### Bottom Cap, Longitudinal Torque Rod and Torque Rod Spacer



Page 6 PRIMAAX EX 23K • 46K • 69K | 26K S ■ 9" Ride Height

AIR DISC BRAKES							
Forward Rear			Rear Rear			Torque Rod Spacer	
Pinion Angle	Bottom Cap Part No.*	Longitudinal Torque Rod**	Pinion Angle	Bottom Cap Part No.*	Longitudinal Torque Rod**	Length in mm	Part No.
3.3	60556-025	67219-435	11.26	60556-100	67219-475	0	
3.86	60556-030		11.7	60556-105		0	
4.2	60556-035		12.15	60556-110		0	
4.36	60556-025		12.28	60556-100		6.35	67045-072
4.92	60556-030		12.73	60556-105		6.35	67045-072
5.26	60556-035		13.17	60556-110		6.35	67045-072
5.42	60556-025		13.29	60556-100		12.7	67045-071
5.97	60556-030		13.74	60556-105		12.7	67045-071
5.98	60556-055		13.96	60556-055		0	
6.32	60556-035		14.19	60556-110		12.7	67045-071
6.46	60556-025		14.3	60556-100	19.05	67045-070	
7.02	60556-030				19.05	67045-070	
7.04	60556-055				6.35	67045-072	
7.36	60556-035				19.05	67045-070	
7.5	60556-025				25.4	67045-069	
8.05	60556-030				25.4	67045-069	
8.09	60556-055				12.7	67045-071	
8.4	60556-035				25.4	67045-069	
9.13	60556-055				19.05	67045-070	
10.17	60556-055				25.4	67045-069	

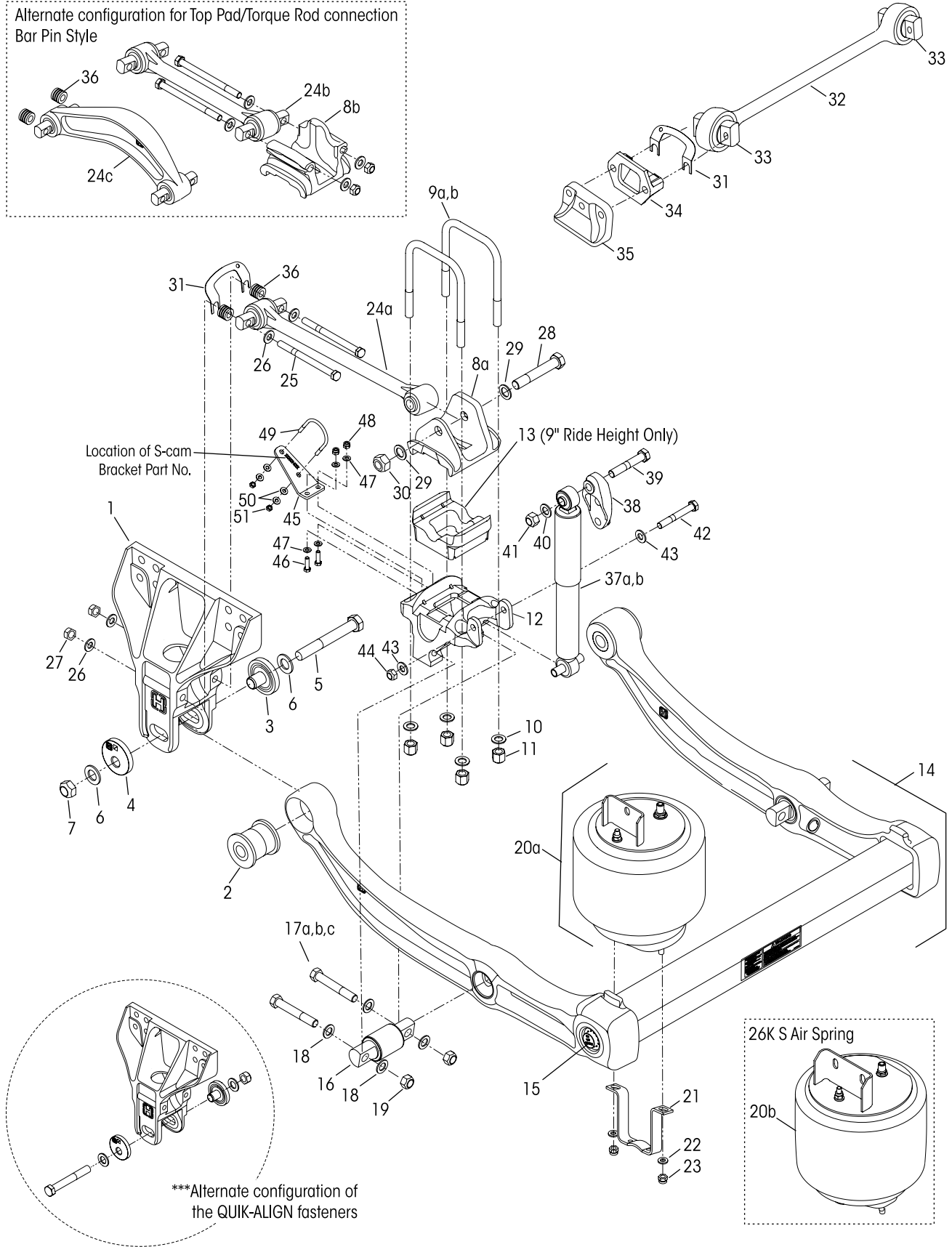
◆ For specific part numbers see last 3 digits etched on the bottom of the bottom cap as shown in the illustration above.  
 ◆◆ Non-serviceable torque rod bushings, requires replacement of complete torque rod assembly with bushings.



PRIMAAX EX 23K•46K•69K - 9", 10½" Ride Height

PRIMAAX EX 26K S - 9" Ride Height - (S – designates Small Clamp Group)

Alternate configuration for Top Pad/Torque Rod connection  
Bar Pin Style





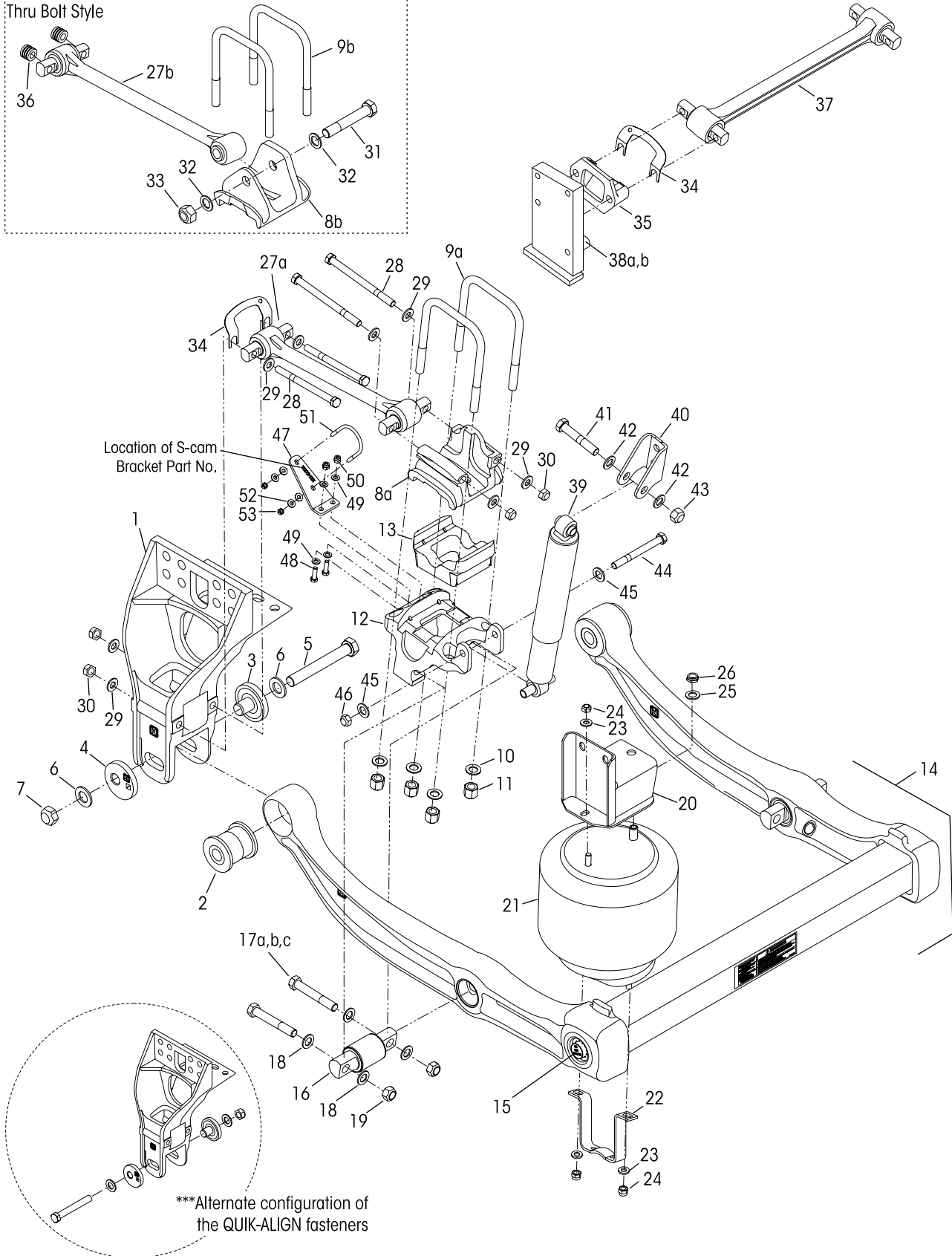
# PRIMAAX® EX 23K•46K•69K•26K S for International Truck Vehicles

			VEHICLE				VEHICLE
KEY NO.	PART NO.	DESCRIPTION	QTY.	KEY NO.	PART NO.	DESCRIPTION	QTY.
1	67706-000	Frame Hanger	4	20		Air Spring Assembly with Upper Frame Bracket	4
		<b>QUIK-ALIGN® Pivot Bushing Service Kits,</b>		a	67234-002L	23K•46K•69K	
	60961-720	Includes Key Nos. 2-7, 52		b	68056-002L	26K S	
	60632-020	One Wheel End		21	60911-002	Lower Air Spring Mounting Bracket	4
		Axle Set			49177-006	<b>Lower Air Spring Fastener Service Kit, Single,</b>	
		<b>QUIK-ALIGN Collar Service Kit, Includes Key Nos. 3-7</b>				Includes Key Nos. 22-23	
	60632-019	One Wheel End, Replaces 60632-006		22		*1/2" Flat Washer	8
	60632-021	Axle Set		23		*1/2"-13 UNC Locknut	8
	60632-018	<b>QUIK-ALIGN Fastener Service Kit, One Wheel End,</b>		24		Longitudinal Torque Rod Assembly,	4
		Includes Key Nos. 5-7, Replaces 60632-005				See Selection Guide on Page 4 and 5	
2		*Pivot Bushing	4	a	67274-XXX	Thru Bolt Style	
3		*Concentric Collar	4	b	620XX-XXXN	Bar Pin Style	
4		*Eccentric Collar	4	c	67219-XXX	Air Disc Brake	
5		*1"-1 1/4 UNF-2A x 7 1/2" H-Coat Hex Bolt	4			<b>Single Longitudinal Torque Rod Fastener Kit</b>	
6		*1" H-Coat Flat Washer	8		49176-026	Thru Bolt and Bar Pin Connection,	
7		*1"-1 1/4 UNF-2B H-Coat Locknut	4			Includes Key Nos. 25-30	
8		Top Pad, See Selection Guide on Page 4	4		58821-012	Rear Thru Bolt Connection Only, Includes	
a	65290-XXX	Thru Bolt Style				Key Nos. 28-30	
b	65289-XXX	Bar Pin Style, Air Disc Brake		25		*5/8"-11 UNC-2B x 8" Bolt	8
		<b>U-bolt Service Kit, One Wheel End,</b>		26		*5/8" Flat Washer	16
	48718-108	Includes Key Nos. 9a, 10-11		27		*5/8"-11 UNC-2A Locknut	8
	48718-125	Includes Key Nos. 9b, 10-11 (Thru Bolt Style)		28		*7/8"-1 1/4 UNF-2A x 5 1/2" Hex Bolt	4
	48718-130	Includes Key Nos. 9c, 10-11 (Bar Pin Style)		29		*7/8" H-Coat Flat Washer	8
9		*3/4" Square U-bolt		30		*7/8"-1 1/4 UNF-2B Locknut	4
a		8 7/8" Length - 10 1/2" Ride Height	8	31	49689-000L	Shim	As Req.
b		10 3/8" Length - 9" Ride Height	8	32	72000-XXXS	**ULTRA ROD® PLUS™ Transverse Torque Rod	2
c		10 3/8" Length - 9" Ride Height	8			Assembly, Includes Key No. 33, Specify	
10		*3/4" Flat Washer	16			length in mm	
11		*3/4"-16 UNF U-bolt Locknut	16	33	64400-002L	Bushing - Straddle Bar Pin (5/8" Holes)	4
12	60556-XXX	Bottom Cap - Front and Rear,	4	34	22186-000	Transverse Torque Rod Frame Bracket	2
		See Selection Guide on Page 4 and 5		35	60593-000L	Axle Stop, Frame Mounted	4
13	65139-003	Axle Spacer, 9" Ride Height Only	4	36	67045-XXX	Torque Rod Spacer,	
14		U-beam Assembly, Includes Key Nos. 2, 16	2			See Selection Guide on Page 5	
		• Front Frame Width		37a	60657-003L	Shock Absorber	4
	67249-012	34.3"		b	70807-001	Heavy-duty Shock Absorber, Optional	4
	67249-010	34.5"		c	60665-011	Shock Absorber - 26K S	2
	67249-024	34.8"		38	67463-002	Upper Shock Frame Bracket	4
		• Rear Frame Width			50754-030	<b>Single Shock Fastener Service Kit,</b>	
	67249-011	34.3"				Includes Key Nos. 39-44	
	67249-009	34.5"		39		*3/4"-10 UNC x 4 1/4" Upper Shock Bolt	4
	67249-023	34.8"		40		*3/4" Flat Washer	4
15	69565-001	<b>U-beam Assembly Enhancement Aftermarket</b>		41		*3/4"-10 UNC Locknut	4
		<b>Service Kit, Axle Set, See Page 14 for contents</b>		42		*5/8"-11 UNC x 6" Lower Shock Bolt	4
		<b>Single D-Pin Bushing Service Kit,</b>		43		*5/8" Flat Washer	8
	34013-107	Includes Key Nos. 16, 17a, 18-19		44		*5/8"-11 UNC-2B Locknut	4
	34013-116	Includes Key Nos. 16, 17b, 18-19				<b>NOTE</b>	
	34013-117	Includes Key Nos. 16, 17c, 18-19				<b>Key Nos. 45-51</b> are not required if equipped	
16		*D-Pin Bushing	4			with 24c and Air Disc Brake	
		<b>D-Pin Fastener Service Kit, Axle Set,</b>		45	64508-XXX	S-cam Support Bracket,	4
	56659-009	Includes Key Nos. 17a, 18-19				Locate part number on component	
	56659-013	Includes Key Nos. 17b, 18-19			58821-017	<b>S-cam Fastener Service Kit, Axle Set,</b>	
	56659-012	Includes Key Nos. 17c, 18-19				Includes Key Nos. 46-51	
17		*3/4"-16 UNF Bolt	8	46		*3/8"-16 UNC x 1 1/4" Hex Bolt	8
a		5" Length		47		*3/8" Hardened Washer	16
b		5 1/2" Length		48		*3/8"-16 UNC Locknut	8
c		4 3/4" Length		49		*5/16" S-cam U-bolt	4
18		*3/4" Flat Washer	16	50		*5/16" Hardened Washer	16
19		*3/4"-16 UNF Locknut	8	51		*5/16"-18 UNC Locknut	8
		<b>Single Air Spring Service Kit,</b>		52	70867-001	P-80 Lubricant - 10 ml (Not Shown)	per Bushing 1
	60961-664	Includes Key Nos. 20a-23					
	60961-665	Includes Key Nos. 20b-23					



23KT•46KT•69KT - 13" Ride Height (T – designates Tall Ride Height)

Alternate configuration for Top Pad/Torque Rod connection  
Thru Bolt Style





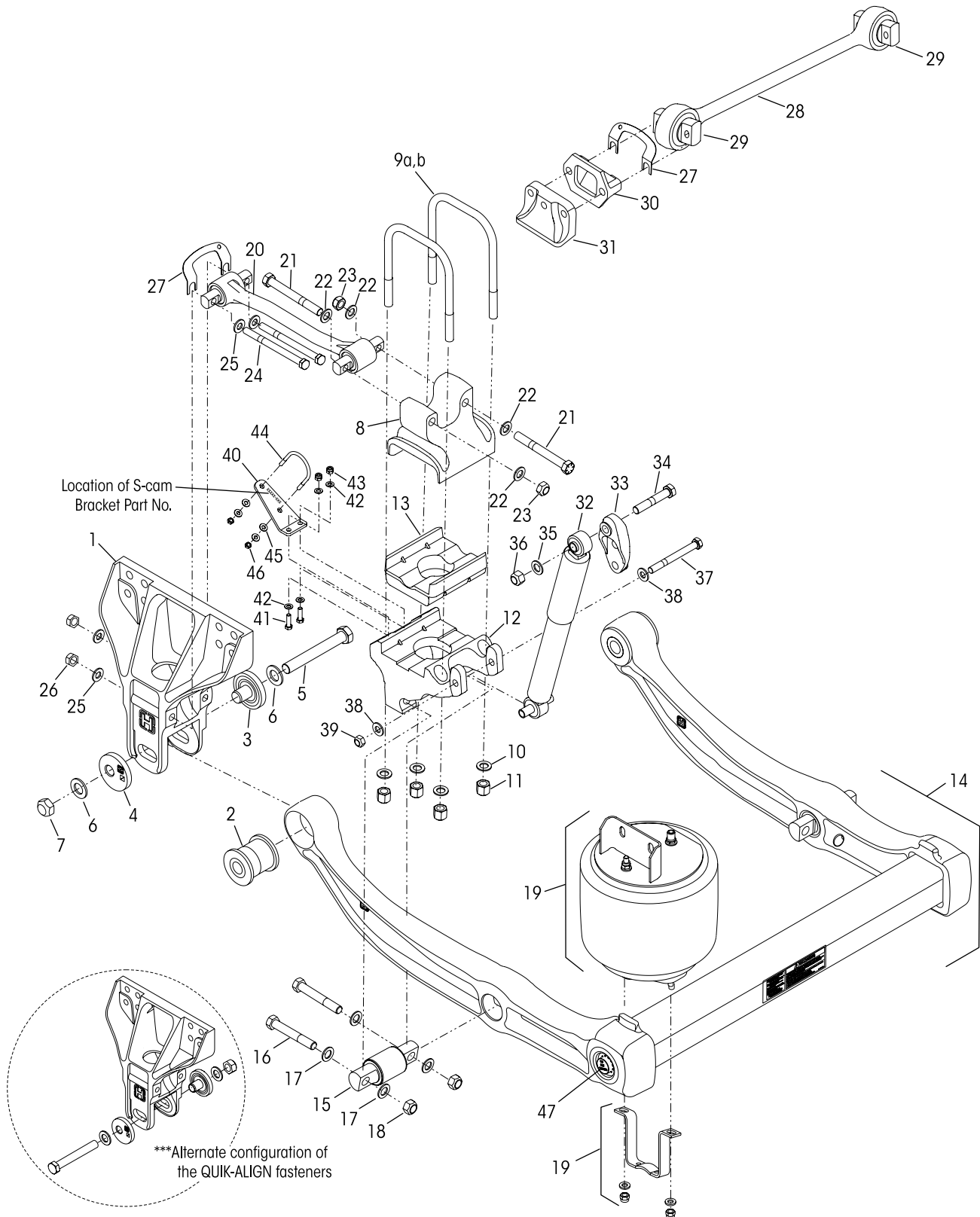


# PRIMAAX® EX 23K•46K•69K for International Truck Vehicles

			VEHICLE				VEHICLE
KEY NO.	PART NO.	DESCRIPTION	QTY.	KEY NO.	PART NO.	DESCRIPTION	QTY.
1		Frame Hanger			67923-002	Air Spring Assembly, Includes Key Nos. 20-21, 23-26	4
	67299-001	Left Hand	2	20	65031-001	Upper Air Spring Bracket Assembly	4
	67299-002	Right Hand	2		60961-724	<b>Single Air Spring Service Kit,</b> Includes Key Nos. 21-26	
		<b>QUIK-ALIGN® Pivot Bushing Service Kit,</b> Includes Key Nos. 2-7, 54		21	68070-002L	Air Spring	4
	60961-720	One Wheel End		22	60911-002	Lower Air Spring Mounting Bracket	4
	60632-020	Axle Set				<b>Air Spring Fastener Service Kit, Single</b> Lower, Includes Key Nos. 23-24	
		<b>QUIK-ALIGN Collar Service Kit,</b> Includes Key Nos. 3-7			49177-006	Upper/Lower, Includes Key Nos. 23-26	
	60632-019	One Wheel End, <i>Replaces 60632-006</i>		23		*1/2" Flat Washer	12
	60632-021	Axle Set		24		*1/2"-13 UNC Locknut	12
	60632-018	<b>QUIK-ALIGN Pivot Bolt Service Kit, One Wheel End,</b> Includes Key Nos. 5-7, <i>Replaces 60632-005</i>		25		*3/4" Flat Washer	4
2		*Pivot Bushing	4	26		*3/4"-16 UNF Locknut	4
3		*Concentric Collar	4	27 a,b		Longitudinal Torque Rod Assembly, Includes Bushings. Specify length in mm, See <i>Selection Guide on Page 4 and 5</i>	4
4		*Eccentric Collar	4			<b>Single Longitudinal Torque Rod Fastener Kit</b> Thru Bolt and Bar Pin Connection, Includes Key Nos. 28-33	
5		*1"-14 UNF-2A x 7 1/2" H-Coat Hex Bolt	4		49176-026	2-Bar Pin Connections, Includes Key Nos. 28-30	
6		*1" H-Coat Flat Washer	8		49176-032	Rear Thru Bolt Connection Only, Includes Key Nos. 31-33	
7		*1"-14 UNF-2B H-Coat Locknut	4		58821-012	Key Nos. 31-33	
8		Top Pad, <i>see Selection Guide on Page 4</i>	4	28		*5/8"-11 UNC-2B x 8" Bolt	16
a	65289-XXX	Bar Pin Style		29		*5/8" Flat Washer	32
b	65290-XXX	Thru Bolt Style		30		*5/8"-11 UNC-2A Locknut	16
		<b>U-bolt Service Kit, One Wheel End,</b> Includes Key Nos. 9a, 10-11 (Bar Pin Style)		31		*7/8"-14 UNF-2A x 5 1/2" Hex Bolt	4
	48718-130	Includes Key Nos. 9b, 10-11 (Thru Bolt Style)		32		*7/8" H-Coat Flat Washer	8
	48718-125	Includes Key Nos. 9b, 10-11 (Thru Bolt Style)		33		*7/8"-14 UNF-2B Locknut	4
9		*3/4" Square U-bolt	8	34	49689-000L	Shim	As Req.
a		10 3/8" Length, Bar Pin Style		35	22186-000	Transverse Torque Rod Frame Bracket	2
b		10 3/8" Length, Thru Bolt Style		36	67045-XXX	Torque Rod Spacer, <i>See Selection Guide on Page 5</i>	
10		*3/4" Flat Washer	16	37	62011-XXXN	**Transverse Torque Rod Assembly, Includes Key No. 38, Specify length in mm	2
11		*3/4"-16 UNF U-bolt Locknut	16	38		Axle Stop, Frame Mounted	4
12	60556-XXX	Bottom Cap, <i>See Selection Guide on Page 4 and 5</i>	4	a	65510-001	0° Axle Tower	
13	65139-003	Axle Spacer (required)	4	b	65510-002	20° Axle Tower	
14		U-beam Assembly, Includes Key Nos. 2, 16	2	39	60665-011	Shock Absorber	4
		• Front Frame Width		40	59423-001	Upper Shock Frame Bracket	4
	67249-012	34.3"			50754-030	<b>Single Shock Fastener Service Kit,</b> Includes Key Nos. 41-46	
	67249-010	34.5"		41		*3/4"-10 UNC x 4 1/4" Upper Shock Bolt	4
	67249-024	34.8"		42		*3/4" Flat Washer	8
		• Rear Frame Width		43		*3/4"-10 UNC Locknut	4
	67249-011	34.3"		44		*5/8"-11 UNC x 6" Lower Shock Bolt	4
	67249-009	34.5"		45		*5/8" Flat Washer	8
	67249-023	34.8"		46		*5/8"-11 UNC-2B Locknut	4
15	69565-001	<b>U-beam Assembly Enhancement Aftermarket Service Kit, Axle Set, See Page 14 for contents</b>				<b>NOTE</b> Key Nos. 47-53 are not required if equipped with 24c and Air Disc Brake	
		<b>Single D-Pin Bushing Service Kit,</b> Includes Key Nos. 16, 17a, 18-19		47	64508-XXX	S-cam Support Bracket, <i>Locate part number on component</i>	4
	34013-107	Includes Key Nos. 16, 17b, 18-19			58821-017	<b>S-cam Fastener Service Kit, Axle Set,</b> Includes Key Nos. 48-53	
	34013-116	Includes Key Nos. 16, 17c, 18-19		48		*3/8"-16 UNC x 1 1/4" Hex Bolt	8
	34013-117	Includes Key Nos. 16, 17c, 18-19		49		*3/8" Hardened Washer	16
16		*D-Pin Bushing	4	50		*3/8"-16 UNC Locknut	8
		<b>D-Pin Fastener Service Kit, Axle Set,</b> Includes Key Nos. 17a, 18-19		51		*5/16" S-cam U-bolt	4
	56659-009	Includes Key Nos. 17b, 18-19		52		*5/16" Hardened Washer	16
	56659-013	Includes Key Nos. 17b, 18-19		53		*5/16"-18 UNC Locknut	8
	56659-012	Includes Key Nos. 17c, 18-19		54	70867-001	P-80 Lubricant - 10 ml (Not Shown) per Bushing 1	
17		*3/4"-16 UNF Bolt	8				
a		5" Length					
b		5 1/2" Length					
c		4 3/4" Length					
18		*3/4" Flat Washer	16				
19		*3/4"-16 UNF Locknut	8				



PRIMAAX EX 26K • 52K • 78K - 9" Ride Height



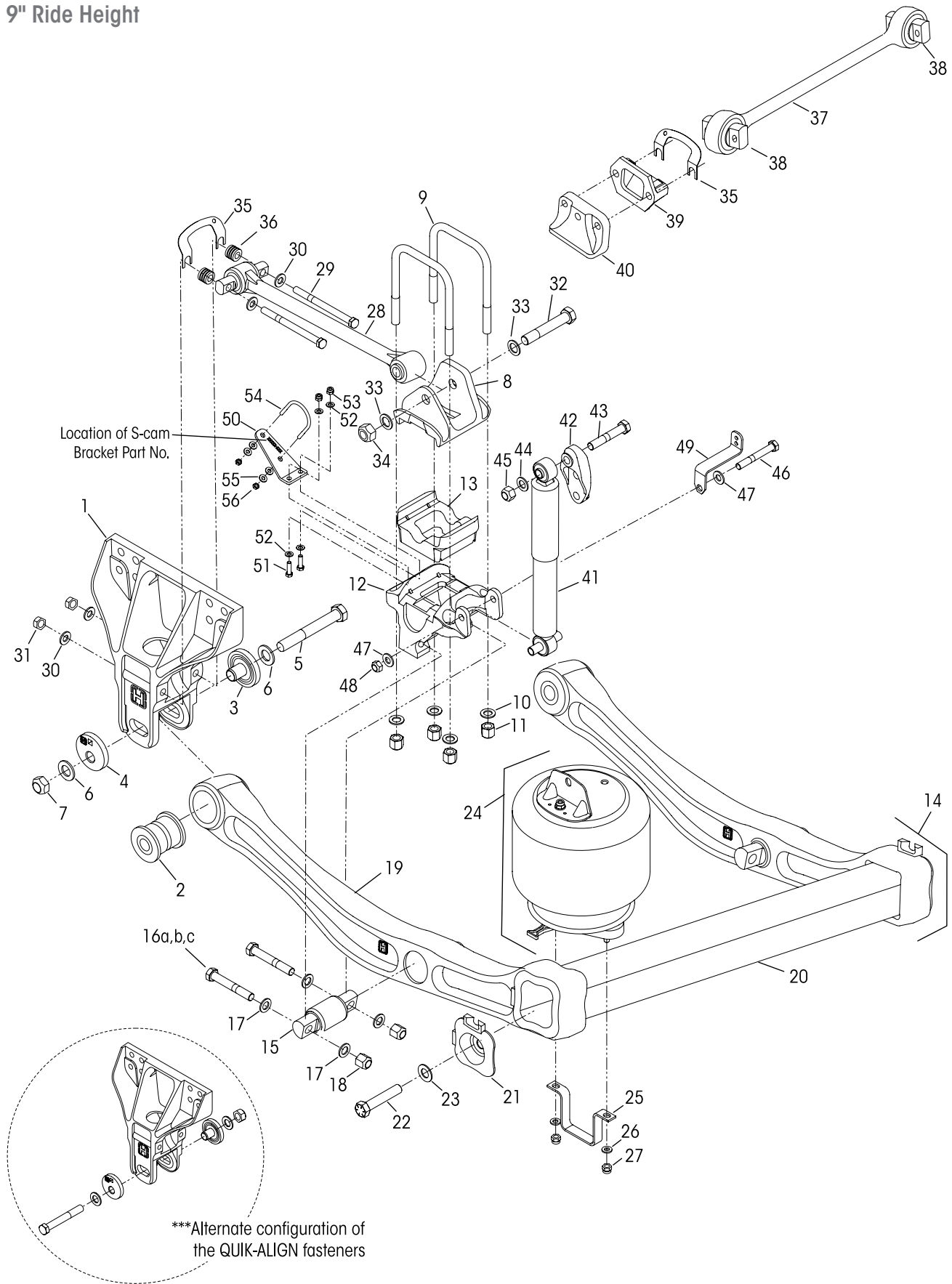


# PRIMAAX® EX 26K•52K•78K for International Truck Vehicles

KEY NO.	PART NO.	DESCRIPTION	VEHICLE QTY.	KEY NO.	PART NO.	DESCRIPTION	VEHICLE QTY.
1	67706-000	EX Frame Hanger	4	20		Longitudinal Torque Rod Assembly, Specify Length in mm. Contact Hendrickson Truck Parts for specific part number	4
	60961-720	One Wheel End		65302-470A		Left Front	
	60632-020	Axle Set		65302-470B		Right Front	
		<b>QUIK-ALIGN Collar Service Kit</b> , Includes Key Nos. 3-7		65302-520A		Left Rear	
	60632-019	One Wheel End, <i>Replaces 60632-006</i>		65302-520B		Right Rear	
	60632-021	Axle Set		65302-530A		Left Rear	
	60632-018	<b>QUIK-ALIGN Fastener Service Kit, One Wheel End</b> , Includes Key Nos. 5-7, <i>Replaces 60632-005</i>		65302-530B		Right Rear	
2		*QUIK-ALIGN Pivot Bushing	4			<b>Longitudinal Torque Rod Fastener Service Kit</b> , Axle Set, Includes Key Nos. 21-26 Axle Set, Includes Key Nos. 24-26	
3		*QUIK-ALIGN Concentric Collar	4	21		*3/4"-16 UNF x 6" Hex Bolt	8
4		*QUIK-ALIGN Eccentric Collar	4	22		*3/4" Flat Washer	16
5		*1"-14 UNF-2A x 7 1/2" H-Coat Hex Bolt	4	23		*3/4"-16 UNF Locknut	8
6		*1" H-Coat Flat Washer	8	24		*5/8"-11 UNC-2B x 8" Bolt	8
7		*1"-14 UNF-2B H-Coat Locknut	4	25		*5/8" Flat Washer	16
8		Top Pad, <i>See illustration on page 3</i>	4	26		*5/8"-11 UNC-2A Locknut	8
	48718-118	<b>U-bolt Service Kit, Axle Set</b> Includes Key Nos. 9a-9b, 10-11		27	49689-000L	Shim	As Req.
9		*3/4" Square U-bolt	8	28	72000-XXS	**ULTRA ROD PLUS Transverse Torque Rod Assembly, Includes Bushings, Specify length in mm	2
a		1 1/2", Outboard		29	64400-002L	Bushing - Straddle Bar Pin - 5/8" Holes	4
b		12", Inboard		30	22186-000	Transverse Torque Rod Frame Bracket	2
10		*3/4" Flat Washer	16	31	60593-000L	Axle Stop, Frame Mounted	4
11		*3/4"-16 UNF U-bolt Locknut	16	32	60665-013L	Shock Absorber	4
12		Bottom Cap - Front and Rear <i>See Selection Guide on page 3</i>	4	33	67463-002	Upper Shock Frame Bracket	4
13		Axle Spacer - Front and Rear <i>See Selection Guide on page 3</i>	4		50754-036	<b>Shock Absorber Fastener Service Kit</b> One Wheel End, Includes Key Nos. 34-39	
14		U-beam Assembly, Includes Key Nos. 2, 15	2	34		*3/4"-10 UNC x 4 1/2" Upper Shock Bolt	4
	67249-014	• Front 34.3" Frame Width		35		*3/4" Flat Washer	As Req.
	67249-016	34.5" Frame Width		36		*3/4"-10 UNC Locknut	4
	67249-026	34.8" Frame Width		37		*5/8"-11 UNC x 7" Lower Shock Bolt	4
	67249-013	• Rear 34.3" Frame Width		38		*5/8" Flat Washer	8
	67249-015	34.5" Frame Width		39		*5/8"-11 UNC-2B Locknut	4
	67249-025	34.8" Frame Width		40	64508-XXX	S-cam Support Bracket, <i>Locate part number on component</i>	4
	34013-114	<b>Single D-pin Bushing Service Kit</b> , Includes Key Nos. 15-18			58821-017	<b>S-cam Fastener Service Kit, Axle Set</b> , Includes Key Nos. 41-46	
15		*D-pin Bushing	4	41		*3/8"-16 UNC x 1 1/4" Hex Bolt	8
	56659-010	<b>D-pin Fastener Service Kit, Axle Set</b> Includes Key Nos. 16-18		42		*3/8" Hardened Washer	16
16		*7/8"-14 UNF x 5" Bolt	8	43		*3/8"-16 UNC Locknut	8
17		*7/8" Flat Washer	16	44		*5/16" S-Cam U-bolt	4
18		*7/8"-14 UNF Locknut	8	45		*5/16" Hardened Washer	16
19	68056-002	Air Spring Assembly with Upper Frame Bracket	4	46		*5/16"-18 UNC Locknut	8
				47	69565-001	<b>U-beam Assembly Enhancement Aftermarket Service Kit, Axle Set</b> , <i>See page 14 for contents</i>	
				48	70867-001	P-80 Lubricant - 10 ml (Not Shown) per Bushing	1



9" Ride Height





# PRIMAAX® 230•460•690 for International Truck Vehicles

KEY NO.	PART NO.	DESCRIPTION	VEHICLE QTY.	KEY NO.	PART NO.	DESCRIPTION	VEHICLE QTY.
1	67706-000	Frame Hanger, <i>Replaces 65891-000</i>	4				
		<b>QUIK-ALIGN® Pivot Bushing Service Kit,</b> Includes Key Nos. 2-7, 57					
	60961-720	One Wheel End		60961-062	<b>Single Air Spring Service Kit,</b> Includes Key Nos. 24-27		
	60632-020	Axle Set		24	60271-002L	Air Spring Assembly with Upper Frame Bracket	4
		<b>QUIK-ALIGN Collar Service Kit,</b> Includes Key Nos. 3-7		25	60911-002	Lower Air Spring Mounting Bracket	4
	60632-019	One Wheel End, <i>Replaces 60632-006</i>			49177-006	<b>Lower Air Spring Fastener Service Kit, Single,</b> Includes Key Nos. 26-27	
	60632-021	Axle Set		26		*1/2" Flat Washer	8
	60632-018	<b>QUIK-ALIGN Pivot Bolt Service Kit, One Wheel End,</b> Includes Key Nos. 5-7, <i>Replaces 60632-005</i>		27		*1/2"-13 UNC Locknut	8
2		*Pivot Bushing	4	28		Longitudinal Torque Rod Assembly, <i>See Selection Guide on Page 4 and 5</i>	4
3		*Concentric Collar	4		49176-026	<b>Single Longitudinal Torque Rod Fastener Kit</b> Thru Bolt and Bar Pin Connection, Includes Key Nos. 29-34	
4		*Eccentric Collar	4		58821-012	Rear Thru Bolt Connection Only, Includes Key Nos. 32-34	
5		*1"-14 UNF-2A x 7 1/2" H-Coat Hex Bolt	4	29		*5/8"-11 UNC-2B x 8" Bolt	8
6		*1" H-Coat Flat Washer	8	30		*5/8" Flat Washer	16
7		*1"-14 UNF-2B H-Coat Locknut	4	31		*5/8"-11 UNC-2A Locknut	8
8	65290-001	Top Pad	4	32		*7/8"-14 UNF-2A x 5 1/2" Hex Bolt	4
	48718-125	<b>U-bolt Service Kit, One Wheel End,</b> Includes Key Nos. 9-11		33		*7/8" H-Coat Flat Washer	8
9		*3/4" Square U-bolt, 10 3/8" Length	8	34		*7/8"-14 UNF-2B Locknut	4
10		*3/4" Flat Washer	16	35	49689-000L	Shim	As Req.
11		*3/4"-16 UNF U-bolt Locknut	16	36	67045-XXX	Torque Rod Spacer, <i>See Selection Guide on Page 5</i>	
12	60556-XXX	Bottom Cap - Front and Rear, <i>See Selection Guide on Page 4 and 5</i>	4	37	72000-XXXS	**ULTRA ROD® PLUS™ Transverse Torque Rod Assembly, Includes Key No. 38, Specify length in mm	2
13	65139-003	Axle Spacer	4	38	64400-002L	Bushing - Straddle Bar Pin (5/8" Holes)	4
14		****U-beam Assembly, Includes Key Nos. 2, 15 <i>(Replaces previous U-beam assembly, support beam and cross tube assembly, See Replacement Guide below)</i>	2	39	22186-000	Transverse Torque Rod Frame Bracket	2
		<b>Single D-Pin Bushing Service Kit,</b>		40	60593-000L	Axle Stop, Frame Mounted	4
	34013-107	Includes Key Nos. 15, 16a, 17-18		41	60657-003L	Shock Absorber	4
	34013-116	Includes Key Nos. 15, 16b, 17-18		42	67463-002	Upper Shock Frame Bracket, <i>Replaces 65000-002</i>	4
	34013-117	Includes Key Nos. 15, 16c, 17-18			50754-030	<b>Single Shock Fastener Service Kit,</b> Includes Key Nos. 43-48	
15		*D-Pin Bushing	4	43		*3/4"-10 UNC x 4 1/4" Upper Shock Bolt	4
		<b>D-Pin Fastener Service Kit, Axle Set,</b>		44		*3/4" Flat Washer	4
	56659-009	Includes Key Nos. 16a, 17-18		45		*3/4"-10 UNC Locknut	4
	56659-013	Includes Key Nos. 16b, 17-18		46		*5/8"-11 UNC x 6" Lower Shock Bolt	4
	56659-012	Includes Key Nos. 16c, 17-18		47		*5/8" Flat Washer	8
16		*3/4"-16 UNF Bolt	8	48		*5/8"-11 UNC-2B Locknut	4
a		5" Length		49	60921-000	Height Control Valve Linkage Bracket	2
b		5 1/2" Length		50	64508-XXX	S-cam Support Bracket, <i>Locate part number on component</i>	4
c		4 3/4" Length			58821-017	<b>S-cam Fastener Service Kit, Axle Set,</b> Includes Key Nos. 51-56	
17		*3/4" Flat Washer	16	51		*3/8"-16 UNC x 1 1/4" Hex Bolt	8
18		*3/4"-16 UNF Locknut	8	52		*3/8" Hardened Washer	16
19		****Support Beam Assembly ( <i>66435-xxx, See Replacement Guide below</i> )		53		*3/8"-16 UNC Locknut	8
20		****Cross Tube ( <i>60912-xxx, See Replacement Guide below</i> )		54		*5/16" S-cam U-bolt	4
	46772-001	<b>End Cap and Fastener Kit, Axle Set,</b> Includes Key Nos. 21-23		55		*5/16" Hardened Washer	16
21		*End Cap	4	56		*5/16"-18 UNC Locknut	8
22		*7/8"-9 UNC x 3 1/2" Hex Bolt	4	57	70867-001	P-80 Lubricant - 10 ml (Not Shown) per Bushing 1	
23		*7/8" H-Coat Flat Washer	4				

## Support Beam and Cross Tube Replacement Guide

Key Nos. 19, 20	DISCONTINUED May 2010				NEW		
	Support Beam Assembly Part Number				Cross Tube Part No.	U-beam Assembly Service Kit No.	
	60831-00X • 66435-00X				60912-XXX	60961-XXX	
*Frame Width (Inches)	LH Forward	LH Rear	RH Forward	RH Rear	Forward	Rear	
34.3					-003	-261	-262
34.5	-003	-001	-004	-002	-002	-263	-264
34.8					-009	-243	-244

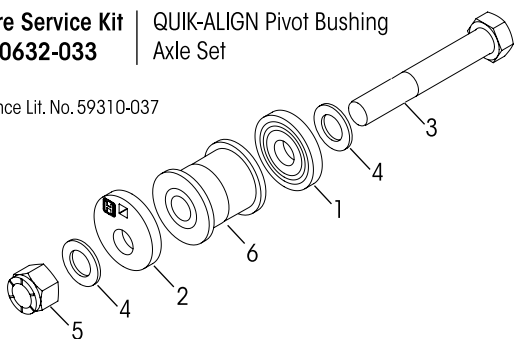
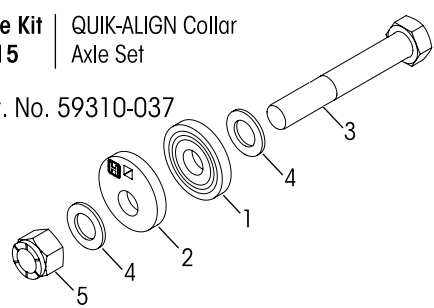
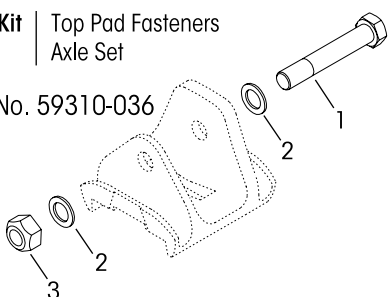
**NOTE:** \*Contact vehicle manufacturer to verify frame width.



## U-beam Assembly Aftermarket Service Kit

Service Kit No. 69565-001, Axle Set			
PART NO.	DESCRIPTION	QTY.	COMMENTS
69351-000	Sikaflex 221 Polyurethane Sealant, 300 ml Tube	1	In the event any service to the suspension requiring disassembly of a U-beam assembly equipped with integrated end caps, the Loctite 277, tamper resistant caps and Sikaflex 221 polyurethane sealant must be properly installed to ensure components function to their highest efficiency.
69570-000	Loctite® 277 - 10 ml Bottle	1	
*	Tamper Resistant Cap	2	
*	7/8"-9 UNC x 3 3/4" Hex Bolt	2	
*	7/8" H-Coat Flat Washer	2	

## Severe Service Kits

<p><b>Severe Service Kit No. 60632-033</b>   QUIK-ALIGN Pivot Bushing Axle Set</p> <p>Reference Lit. No. 59310-037</p> 	<p><b>KIT NO. 60632-033</b> PRIMAAX EX, PRIMAAX – 9", 10½", 13" Ride Height</p> <table border="1"> <thead> <tr> <th>KEY NO.</th> <th>CONTENTS</th> <th>KIT QTY.</th> </tr> </thead> <tbody> <tr> <td>1</td> <td>QUIK-ALIGN Concentric Collar</td> <td>2</td> </tr> <tr> <td>2</td> <td>QUIK-ALIGN Eccentric Collar</td> <td>2</td> </tr> <tr> <td>3</td> <td>1 ¼"-12 UNF Bolt - 8"</td> <td>2</td> </tr> <tr> <td>4</td> <td>1 ¼" Hardened Washer</td> <td>4</td> </tr> <tr> <td>5</td> <td>1 ¼"-12 UNF Nylocknut</td> <td>2</td> </tr> <tr> <td>6</td> <td>QUIK-ALIGN Pivot Bushing</td> <td>2</td> </tr> <tr> <td>7</td> <td>P-80 Bushing Lubricant - 10 ml.</td> <td>per Bushing 1</td> </tr> </tbody> </table>	KEY NO.	CONTENTS	KIT QTY.	1	QUIK-ALIGN Concentric Collar	2	2	QUIK-ALIGN Eccentric Collar	2	3	1 ¼"-12 UNF Bolt - 8"	2	4	1 ¼" Hardened Washer	4	5	1 ¼"-12 UNF Nylocknut	2	6	QUIK-ALIGN Pivot Bushing	2	7	P-80 Bushing Lubricant - 10 ml.	per Bushing 1
KEY NO.	CONTENTS	KIT QTY.																							
1	QUIK-ALIGN Concentric Collar	2																							
2	QUIK-ALIGN Eccentric Collar	2																							
3	1 ¼"-12 UNF Bolt - 8"	2																							
4	1 ¼" Hardened Washer	4																							
5	1 ¼"-12 UNF Nylocknut	2																							
6	QUIK-ALIGN Pivot Bushing	2																							
7	P-80 Bushing Lubricant - 10 ml.	per Bushing 1																							
<p><b>Severe Service Kit No. 60632-015</b>   QUIK-ALIGN Collar Axle Set</p> <p>Reference Lit. No. 59310-037</p> 	<p><b>KIT NO. 60632-015</b> PRIMAAX EX, PRIMAAX – 9", 10½", 13" Ride Height</p> <table border="1"> <thead> <tr> <th>KEY NO.</th> <th>CONTENTS</th> <th>KIT QTY.</th> </tr> </thead> <tbody> <tr> <td>1</td> <td>QUIK-ALIGN Concentric Collar</td> <td>2</td> </tr> <tr> <td>2</td> <td>QUIK-ALIGN Eccentric Collar</td> <td>2</td> </tr> <tr> <td>3</td> <td>1 ¼"-12 UNF Bolt - 8"</td> <td>2</td> </tr> <tr> <td>4</td> <td>1 ¼" Hardened Washer</td> <td>4</td> </tr> <tr> <td>5</td> <td>1 ¼"-12 UNF Nylocknut</td> <td>2</td> </tr> </tbody> </table>	KEY NO.	CONTENTS	KIT QTY.	1	QUIK-ALIGN Concentric Collar	2	2	QUIK-ALIGN Eccentric Collar	2	3	1 ¼"-12 UNF Bolt - 8"	2	4	1 ¼" Hardened Washer	4	5	1 ¼"-12 UNF Nylocknut	2						
KEY NO.	CONTENTS	KIT QTY.																							
1	QUIK-ALIGN Concentric Collar	2																							
2	QUIK-ALIGN Eccentric Collar	2																							
3	1 ¼"-12 UNF Bolt - 8"	2																							
4	1 ¼" Hardened Washer	4																							
5	1 ¼"-12 UNF Nylocknut	2																							
<p><b>Severe Service Kit No. 58821-026</b>   Top Pad Fasteners Axle Set</p> <p>Reference Lit. No. 59310-036</p> 	<p><b>KIT NO. 58821-026</b> Top Pad Thru Bolt Style Only Does Not Include Top Pad</p> <table border="1"> <thead> <tr> <th>KEY NO.</th> <th>CONTENTS</th> <th>KIT QTY.</th> </tr> </thead> <tbody> <tr> <td>1</td> <td>M24 x 3.0-6G H-coat Hex Bolt</td> <td>2</td> </tr> <tr> <td>2</td> <td>M24 Hardened Washer</td> <td>4</td> </tr> <tr> <td>3</td> <td>M24 x 3.0-6H Locknuts</td> <td>2</td> </tr> </tbody> </table>	KEY NO.	CONTENTS	KIT QTY.	1	M24 x 3.0-6G H-coat Hex Bolt	2	2	M24 Hardened Washer	4	3	M24 x 3.0-6H Locknuts	2												
KEY NO.	CONTENTS	KIT QTY.																							
1	M24 x 3.0-6G H-coat Hex Bolt	2																							
2	M24 Hardened Washer	4																							
3	M24 x 3.0-6H Locknuts	2																							

**NOTES:** Quantities specified are shown for a tandem suspension. Adjust quantities for single or tridem suspensions. Quantities of service kit components may vary from amount shown in lists.

\* Item included in assembly / kit only, part not sold separately.

\*\* Transverse Rods are mandatory for the PRIMAAX EX • PRIMAAX suspensions regardless of axle spacing, see Literature No. 59310-004 and 59310-058 for more information.

\*\*\* Alternate configuration of the QUIK-ALIGN fasteners. The locknuts located inboard will allow additional clearance for wider tires or tires with chains. Tightening is still required ONLY on the locknut.

\*\*\*\* No longer available for service, See Replacement Guide on Page 13. For more information, refer to Hendrickson Technical Bulletin Literature No. SEU-0229 or contact Hendrickson Tech Services.

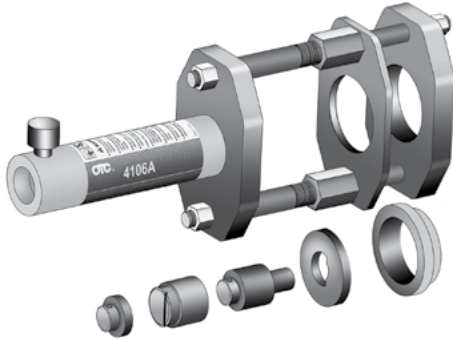


### Special Tools

#### D-PIN / QUIK-ALIGN PIVOT BUSHING SERVICE TOOLS

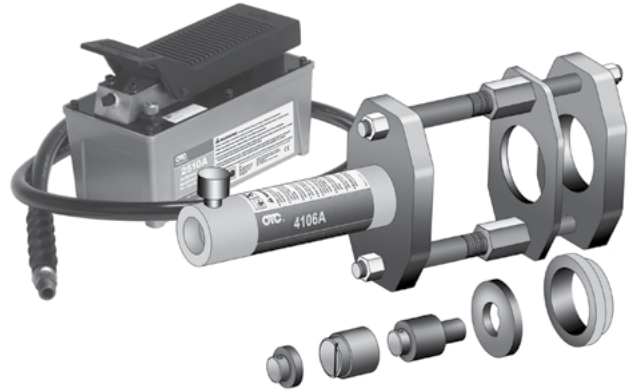
Hendrickson Part No. 66086-202

OTC Part No. 4246 Visit [otctools.com](http://otctools.com)



Hendrickson Part No. 66086-204

OTC Part No. 4247 Visit [otctools.com](http://otctools.com)

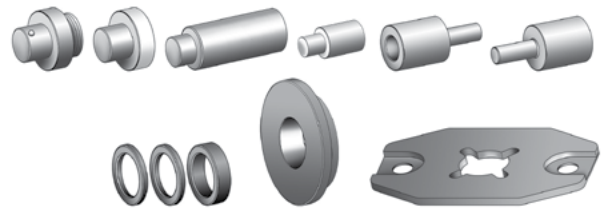


Hendrickson Part No. 66086-205

OTC Part No. 4254

Visit [otctools.com](http://otctools.com)

**NOTE:** In conjunction with Hendrickson Part No. 66086-204 (OTC 4247) this additional adapter tool kit is available to purchase to be used on Hendrickson SOFTEK NXT suspension (not needed for this suspension).



#### QUIK-ALIGN PIVOT BUSHING SERVICE TOOL

Hendrickson Part No. 66086-203L

Reference Literature No. 59310-061



#### QUIK-ALIGN SOCKET TOOL

Hendrickson Part No. 66086-200

OTC Part No. 1767

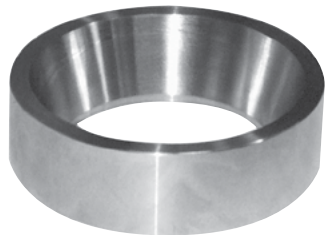
Visit [otctools.com](http://otctools.com)



#### TORQUE ROD BUSHING FUNNEL TOOL

ULTRA ROD PLUS

Hendrickson Part No. 66086-000



#### QUIK-WRENCH TOOL

Hendrickson Part No. 66086-201

OTC Part No. 1768

Visit [otctools.com](http://otctools.com)



This is a general parts list to provide directional information. Components may vary by model. Questions in regards to parts, contact Hendrickson Truck Parts at 1.866.755.5968 (Toll-free U.S. and Canada), 1.630.910.2800 (Outside U.S. and Canada) or e-mail: [truckparts@hendrickson-intl.com](mailto:truckparts@hendrickson-intl.com).

---

[www.hendrickson-intl.com](http://www.hendrickson-intl.com)



Truck Commercial Vehicle Systems  
800 South Frontage Road  
Woodridge, IL 60517-4904 USA

1.866.755.5968 (Toll-free U.S. and Canada)  
1.630.910.2800 (Outside U.S. and Canada)  
Fax 1.630.910.2899