

# EUROPE

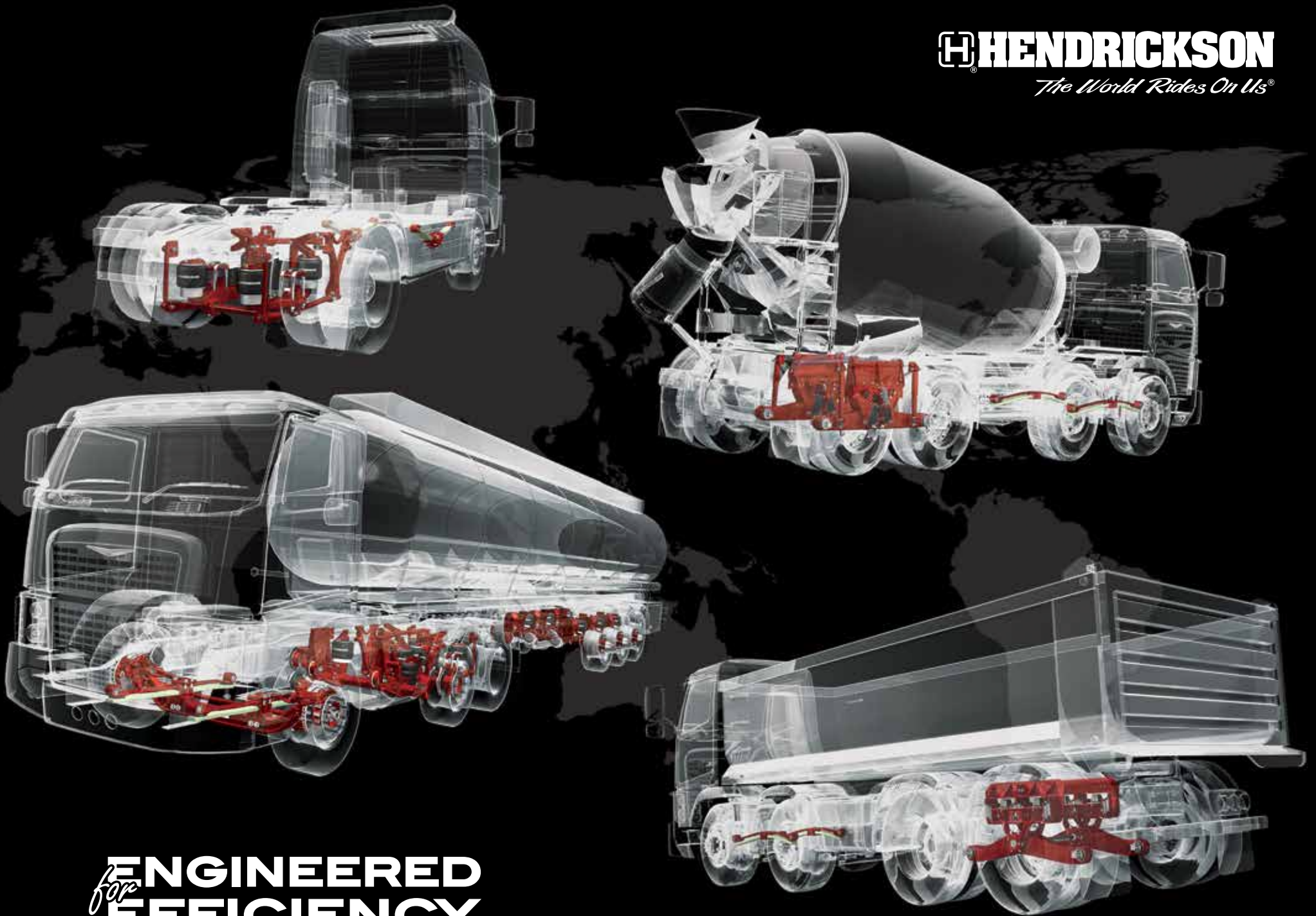
COMMERCIAL VEHICLE SYSTEMS



**HENDRICKSON**  
*The World Rides On Us®*



**HENDRICKSON**  
*The World Rides On Us®*



*for* **ENGINEERED  
EFFICIENCY™**

# CONTENTS

## **Hendrickson Europe History** 1

### **On-Highway / Bus**

STEERTEK™ NXT	3
SOFTEK® NXT	3
AIRTEK® NXT	3
Front Air Assist	3
HA4™	4
HAS™ Series	4
COMFORT AIR®	4
MLA® 2	4
MLA® 3	4
PRIMAAX® EX	5
COMFORTLINER™	5
LUXAIR™	5
HWS™	5
H-TAS™	5
PARASTEER™	5
SOFTEK®	6
AIRTEK®	6
COMFORT AIR®	6

### **Vocational / Off-Highway / Lifiable**

ULTIMAAX®	7
R™ / RS™	7
HAULMAAX®	7
HAULMAAX® EX	7
HAS™ (402, 460)	8
PRIMAAX® EX	8
HPAS™	8
AIRTEK® NXT	8
ROADMAAX™	8
RT™ / RTE™	9
PARASTEER™ HD	9
6 ROD	9
STEERTEK™ NXT	9

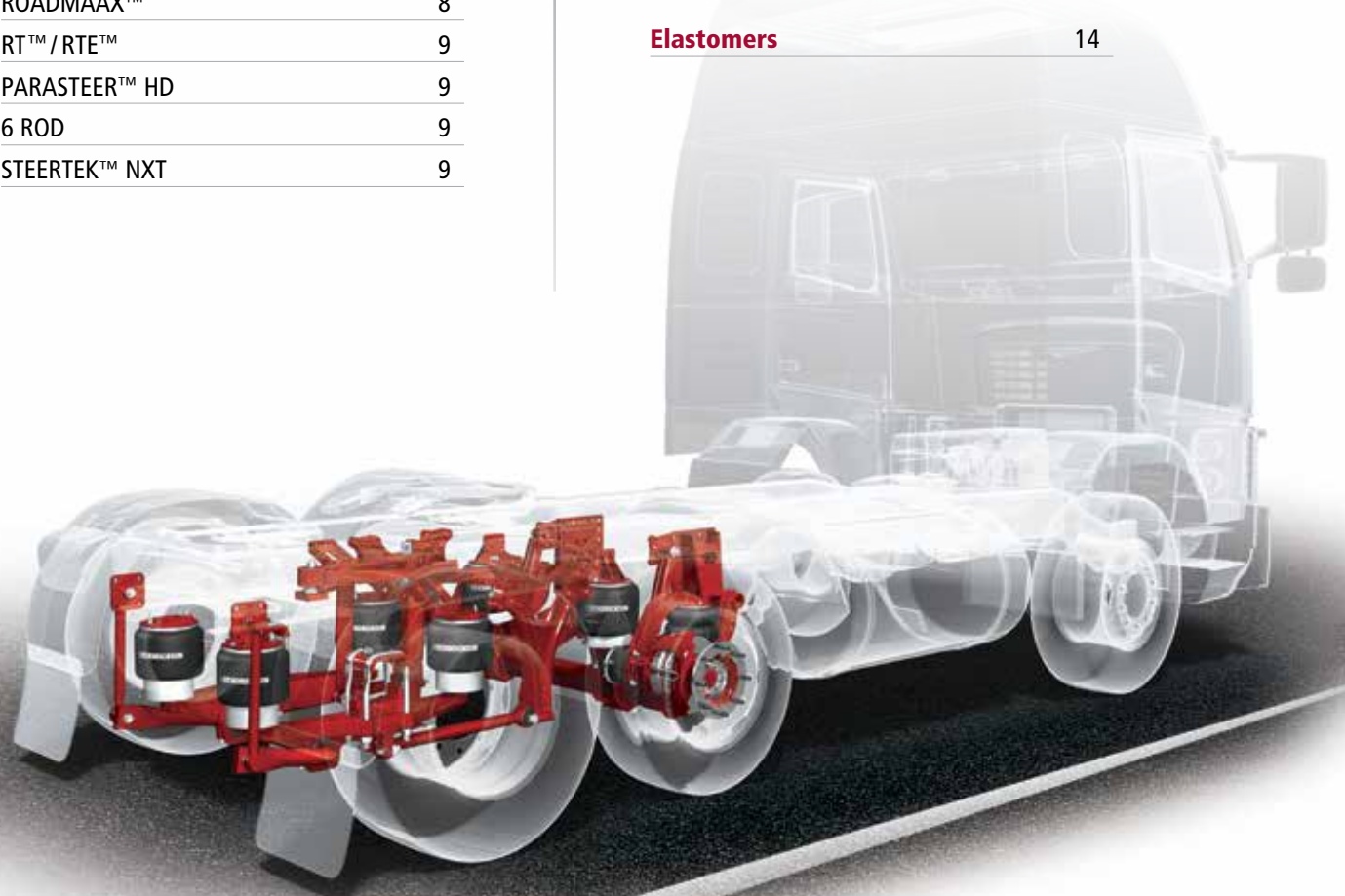
### **Springs / Snake Spring** 10

### **Composites** 11

### **Stabilisers / U-Bolts / Fasteners** 12

### **Torque Rods / Bushings** 13

### **Elastomers** 14





# HENDRICKSON EUROPE HISTORY

In 1913 Magnus Hendrickson, a Swedish immigrant, started manufacturing commercial trucks in Chicago, Illinois. To meet the demand for robust, durable suspensions Hendrickson introduced the first tandem walking-beam suspension in 1926 and pioneered load equalisation principles between truck axles.

Hendrickson's pioneering spirit led to a series of valuable "firsts" that have changed the industry and inspired growth. This growth began with the production of our first tandem suspension in 1926 to the innovative designs of today's HAULMAAX® EX, a heavy-duty lightweight durable tandem rubber suspension, PRIMAAAX®, a severe-duty air suspension and AIRTEK®, an integrated front air suspension and axle for trucks and tractors.

This innovation enabled Hendrickson to design and manufacture new product lines and expand into new global markets. Hendrickson extended the company's global reach by acquiring an English company, Norde Suspensions, Ltd., in 1985.

After the purchase of Norde Suspensions, Ltd., the company was renamed Hendrickson-Norde becoming the headquarters for Hendrickson's European operations, the name was changed to Hendrickson Europe Ltd., in 1989.

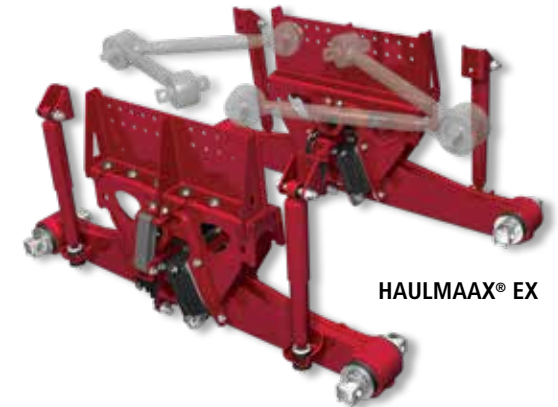


Magnus with son and successor Robert (Bob) Hendrickson and grandson William (Bill) Hendrickson.

Since the purchase of Norde Suspensions, Hendrickson Europe has been focused on the development of smart characteristics for suspensions and components as intelligent vehicles emerge in the heavy-duty trucking industry. Lightweight solutions – rubber tandem suspensions, air suspensions and lift axle systems from the Hendrickson range have been the mainstay on many European trucks as OE fitment ever since. Elements such as brakes and electronics hold tremendous promise for tomorrow's OEM, fleet and owner operator. Engaging and energizing the global trucking community, Hendrickson remains at the forefront in the development of superior and unique components for a new breed of trucks, tractors and trailers.



Hendrickson's invention of the first tandem "walking beam" suspension established the company as an innovator.



HAULMAAX® EX



PRIMAAAX® EX

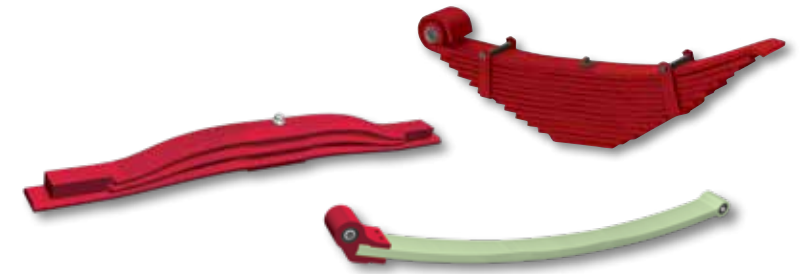


In 2015, Hendrickson extended their global reach even further by acquiring four spring and stabiliser manufacturing plants, increasing footprint size in Europe.

Since 2016 Hendrickson Commercial Vehicle Systems Europe in Austria is responsible for all European locations and product segments.

Hendrickson also acquired a U-bolt, pin and screw manufacturing facility in 2018 and expanded their product range.

Today, Hendrickson has research and development facilities and five plants located in England, Germany, Austria, France (two locations), Romania and Poland providing state-of-the-art leaf spring, stabiliser and U-bolt solutions for the European OEMs.





# ON-HIGHWAY / LIFTABLE SUSPENSION SYSTEMS

## STEERTEK™ NXT

*Fabricated steer axle for on-highway applications*

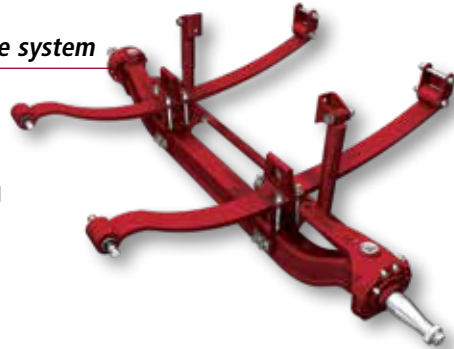
- Designed as a platform for OEM proprietary and next generation front axle / suspension systems
- Fabricated axle assembly for lightweight design
- Saves up to 12.7kg vs. traditional forged I-beam axles
- Box shaped cross-section is more rigid than traditional I-beam axles
- Two-piece knuckle reduces maintenance and downtime
- Compatible with drum and disc brakes
- Capacity up to 6.6t



## SOFTEK® NXT

*Integrated monoleaf suspension and steer axle system*

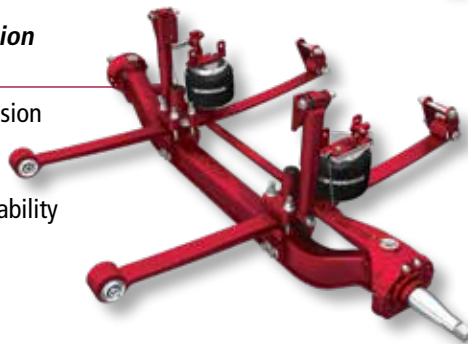
- Combines STEERTEK™ NXT axle and monoleaf technology with an advanced integrated clamp group design
- Saves over 52.6kg vs. traditional two-leaf spring and I-beam axle systems
- Capacities of 5.7 to 6t



## AIRTEK® NXT

*Next generation integrated front air suspension and fabricated steer axle system*

- Combines STEERTEK™ NXT axle and air suspension technology with an advanced integrated clamp group design
- Provides superb ride, driver comfort and roll stability
- Up to 29.5kg weight savings
- Compatible with drum and disc brakes
- Capacities of 5.7 to 6t



## Front Air Assist

*Heavy-duty front air truck suspension system*

- Lightweight with high durability and low maintenance
- Low part count in a compact package with up to 52 degrees of wheel cut
- Excellent ride comfort, raise and lower capability with up to 200mm travel
- Non-torque reactive with optimised steering geometry results in very low caster change
- Capacity up to 8t



## HA4™

### Four-bag, drive-axle air suspension system

- Suitable for medium- and heavy-duty truck applications
- Non-torque reactive suspension maintains driveline pinion angles
- Excellent ride quality with load supported by air springs, protecting the load and body from road shocks
- High suspension travel with raise / lower capability
- Compatible with air disc or drum brakes
- Capacity up to 13t



## HAS™ Series

### Axle air suspension

- Suitable for on-highway applications that require up to 25 percent off-highway travel
- Excellent ride quality
- Lightweight design
- Capacity of 5.4 and 10.5t (single) / 18 and 21t (tandem)



## COMFORT AIR®

### Rear air suspension designed for passenger and driver comfort in various on-highway applications

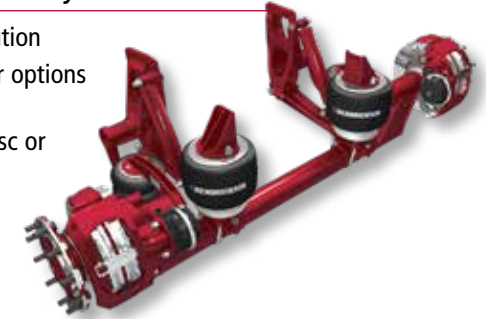
- Main support member designed for optimised roll stiffness and handling
- Air springs adjust to changing road conditions to deliver superior ride quality
- Featuring TRAAX ROD™ torque rods for exceptional performance life
- Capacity ranging from 6.8 to 10.4t



## MLA® 2

### Lightweight mid-lift axle and air suspension system

- The European industry standard 6×2 solution
- Significant weight savings over twin-steer options with greatly reduced operating costs
- Wheel sizes 22.5, 19.5 and 17.5-in. on disc or drum brake axle applications
- Rated up to 8t



## MLA® 3

### Revolutionary 'Next Generation' lifting pusher axle and suspension design for the European market

- Advanced manufacturing processes
  - No direct welding to axle beam
  - Ultra-light-weight fabricated trailing arm suspension
  - No clamp group to service
- Additional weight savings compared to current lift axle systems
- Tuned pivot bushing for optimal roll stability and steering performance
- Increased payload and optimised vehicle efficiency
- Increased chassis packaging space for fuel tanks and auxiliary equipment
- 17.5- and 22.5-inch wheel size options with 4.8 and 7.5t capacities
  - 44 tonnes gvw (6 axles combination) on all variants





# ON-HIGHWAY / BUS

## SUSPENSION SYSTEMS

### PRIMAAX® EX

#### Revolutionary air suspension system

- Suitable for tractor and rigid applications
- Non-reactive to brake and acceleration torque
- Roll-resistant design simplifies installation and maintenance
- Superior ride and handling provide enhanced driver comfort and protection to vehicle loads and body
- Single-axle capacities up to 11.8t



### COMFORTLINER™

#### Premium drive axle air suspension for transit and coach bus applications

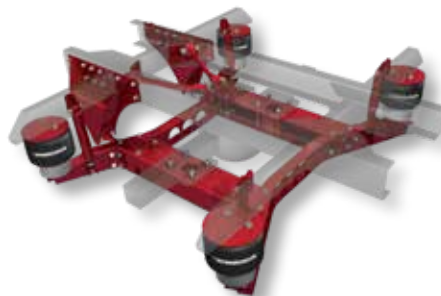
- Fabricated u-beam assembly improves stability, ride and handling
- Air springs adjust to changing road conditions to deliver superior ride quality
- D-pin axle connection lowers axle stress for reduced maintenance
- QUIK-ALIGN® axle alignment system simplifies axle alignment
- Capacities up to 11t



### LUXAIR™

#### Premium lightweight drive axle air suspension for transit and coach bus applications

- Robust fabricated construction for exceptional reliability in various road conditions
- Multiple shock and air spring combinations available
- Non-reactive to brake and drive torque
- High volume air springs provide outstanding level of passenger comfort
- Capacities up to 14t



### HWS™

#### Lightweight, two-bag, drive-axle, air suspension system

- Suitable for medium-duty rigid and tractor unit applications
- Reduced weight, incorporating new technologies and materials
- Optional stabiliser bar for additional roll control in demanding applications
- QUIK-ALIGN® axle alignment system simplifies axle alignment
- Capacities up to 6.5t



### H-TAS™

#### Lightweight, two-bag, drive-axle, air suspension system

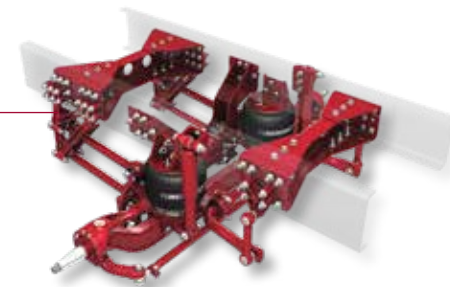
- Suitable for medium-duty tractor and rigid applications
- Rubber pivot bushings provide quiet operation and require no lubrication
- Fewer components, easier assembly
- QUIK-ALIGN® axle alignment system simplifies axle alignment
- Capacities up to 9.5t



### PARASTEER™

#### Front axle air suspension system designed specifically for bus applications

- Four-bar parallelogram linkage provides outstanding ride, steering and handling qualities
- Rubber bushings require no lubrication
- Capacity up to 7t



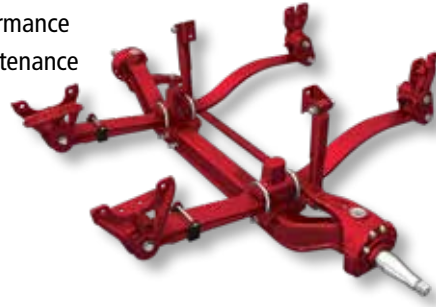




## **SOFTEK®**

*Integrated front mechanical suspension and steer axle system designed for passenger and driver comfort*

- Highly engineered for optimised ride and performance
- Robust design for high durability and low maintenance
- Efficient design contributes to a smooth and quiet ride
- Optimised steering performance delivers up to 55 degrees of wheel cut
- Capacities ranging from 3.6 to 6.6t



## **AIRTEK®**

*Integrated front air suspension and steer axle system designed for comfort and improved performance*

- High-volume air springs provide superb ride and driver comfort
- Low maintenance design helps keep trucks and buses on the road
- Up to 55 degrees of wheel cut greatly improves manoeuvrability
- Capacities ranging from 4.5 to 6.6t



## **AIRTEK® for low floor buses**

*Integrated front air suspension and steer axle system designed for transit bus applications*

- High-volume air springs provide superb ride along with passenger and driver comfort
- Unique integrated system design achieves lower ride heights to ease passenger entry and exit
- Capacities ranging from 7.5 to 8t



## **COMFORT AIR®**

*Single-axle, rear air suspension designed specifically for cut-away and speciality vehicles*

- Optimised configuration provides improved driver feel for increased handling and confidence when performing manoeuvres
- Designed to achieve 90mm of kneel
- Designed to reduce roll forward during kneeling operation
- Capacity up to 4.5t



## **COMFORT AIR®**

*Single-axle, rear air suspension designed for passenger and driver comfort in various medium-duty truck and bus applications*

- Wide footprint of frame hanger reduces stress to the frame
- Suspension geometry improves ride and handling
- Capacities ranging from 6.8 to 11.8t



# VOCATIONAL / HEAVY-HAUL SUSPENSION SYSTEMS

## ULTIMAAX®

### Advanced severe-duty rubber suspension

- Weight saving up to 250kg for higher payload
- Reduced maintenance – no lubrication points
- Progressive roll stability – in most cases no stabiliser bar required



- Capacities up to 29t

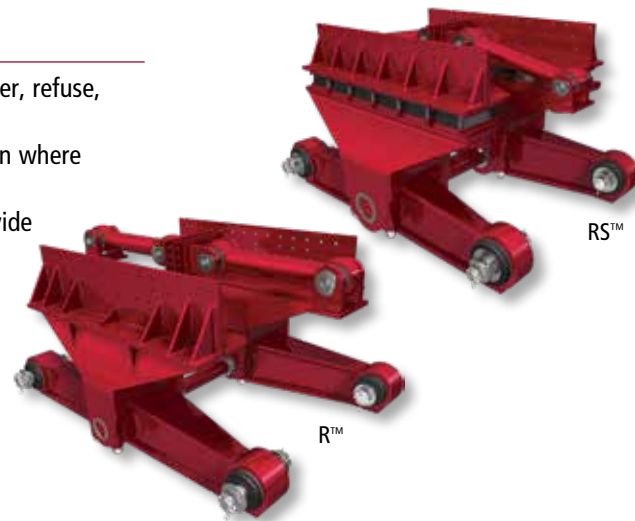


- Capacities up to 48t

## R™ / RS™

### Severe-service, walking-beam suspensions

- Exceptional performance in mining, oil field, mixer, refuse, logging and other specialty applications
- R™ solid mount is an extra heavy-duty suspension where maximum roll stability is essential
- RS™ rubber load cushions absorb shock and provide high stability for severe-service applications
- Capacities up to 54.5t



## HAULMAAX®

### Heavy-duty lightweight rubber suspension

- Weight saving up to 210kg for higher payload
- Progressive roll stability – in most cases no stabiliser bar required
- Up to 432mm of diagonal articulation for greater mobility

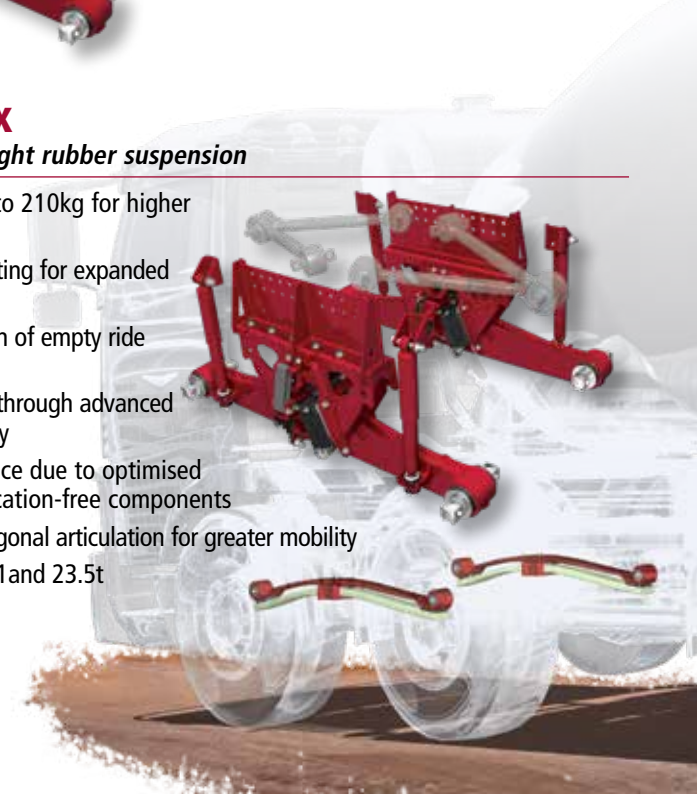


- Recommended for on-highway tractors and straight trucks
- Capacities of 21 and 26t

## HAULMAAX® EX

### Heavy-duty lightweight rubber suspension

- Weight savings up to 210kg for higher payload
- Increased job site rating for expanded applications
- Superior combination of empty ride and laden stability
- Improved durability through advanced elastomer technology
- Reduced maintenance due to optimised geometry and lubrication-free components
- Up to 432mm of diagonal articulation for greater mobility
- Capacities of 18, 21 and 23.5t







## PRIMAAX® EX

### Revolutionary air suspension system

- Suitable for tractor and rigid applications
- Non-reactive to brake and acceleration torque
- Roll-resistant design simplifies installation and maintenance
- Superior ride and handling provide enhanced driver comfort and protection to vehicle loads and body
- Single-axle capacities up to 11.8t (single) and 23t (tandem)



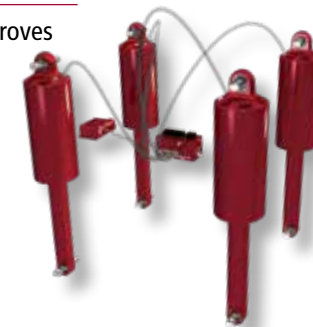
- 170kg of weight savings compared to 4-air spring tandem systems



## HPAS™

### High performance air suspension for truck crane applications

- Complete ride height with spring damper control system, improves vehicle handling and increases roll stability
- Reduced packaging size and easy vehicle retrofit packages
- Debris and environmental resistance
- Provides raising and lowering capability
- Multiple ride height capability
- Adaptable to multiple load range requirements, increasing payload capability while maintaining ride quality at all load ranges and multiple axle combinations
- Capacity up to 13.6t per axle



## AIRTEK® NXT

### Integrated front air suspension and fabricated steer axle system for truck and crane applications

- Single or twin front steer featuring STEERTEK™ NXT
- Trailing or leading arm configuration
- Up to 1321mm axle spacing
- Capacities up to 11.6 t (single axle) and 23.2t (tandem axle)



## ROADMAX™

### Rear air suspension system for truck crane applications

- Up to 1829mm axle spacing
- Eliminates torque rods for lower maintenance
- Capacities up to 13.6t (single axle) and 27t (tandem axle)





# VOCATIONAL / HEAVY-HAUL

## SUSPENSION SYSTEMS

### RT™/RTE™

*Durable steel leaf spring, walking-beam suspensions*

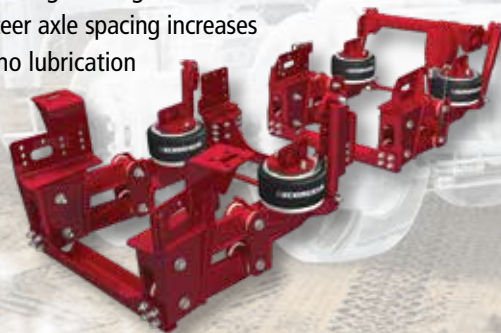
- Well suited for dump, refuse, mixer and mining applications
- Proven reliability for over 85 years
- RTE™ features extended leaf spring for improved unladen ride quality and laden stability
- RT™ capacities up to 29.5t and RTE capacities up to 23t



### PARASTEER™ HD

*Single-, twin- and tri-steer axle air suspension*

- Applications include crane, concrete, oil field and specialty
- No fixed steer axle spacing constraints, providing excellent axle spacing flexibility
- Air springs equally support one hundred percent of the vertical load for excellent ride quality
- Kneeling capability for improved driver ingress / egress
- System weight remains constant as steer axle spacing increases
- Heavy-duty rubber bushings require no lubrication
- Capacities of 6.6 - 9t per axle



### 6 ROD

*Premium double-drive suspension system*

- Suitable for tractors and rigid trucks in on- and off-highway applications
- Provides very high articulation and superb traction on all wheels
- High roll resistance and lower ride frequency with rubber bolsters and long-life, heavy-duty 'V' links and torque rods
- Rated at 26 - 29t and 32 - 48t
- 48t model is available for heavy-duty construction and mining applications



### COMFORT AIR®

*Heavy-duty air suspension*

- Main support member designed for optimised roll stiffness and handling
- Air springs adjust to changing road conditions to deliver superior ride quality
- Featuring TRAAX ROD™ torque rods for exceptional performance life
- Capacities ranging from 9 to 13t



### STEERTEK™ NXT

*Fabricated front steer axle for heavy-duty applications*

- Designed as a platform for OEM proprietary and next generation front axle and suspension systems
- Fabricated axle assembly for lightweight design
- Box shaped cross-section is more rigid than traditional I-beam axles
- Withstands increased brake torque requirements resulting from 2011 F.M.V.S.S. stopping distance regulations
- Compatible with drum and disc brakes
- Capacities ranging from 7 - 11t





# SPRINGS / SNAKE SPRING

## Committed to Advancing Global Leaf Spring Technology

As a leader in the industry, we are committed to advancing global leaf spring technology. In proprietary, state-of-the-art research and design centers, our engineers develop products for today and ride solutions for future generations. Advanced Hendrickson proprietary processing allows us to achieve optimum hardness in springs, for extended fatigue life and higher strength to withstand demanding braking requirements. We've reduced the number of leaves required for many of our spring products, leading to lower cost and weight; benefits that customers come to expect.

We continue vertical integration by manufacturing many of our own spring bushings. This gives us better quality control of the entire spring assembly and ensures overall performance. Hendrickson engineers work with vehicle manufacturers to design and model innovative leaf spring assemblies and conduct rigorous testing in the lab and in real-world conditions; providing you with smart, efficient and cost-effective solutions.

## A Leaf Spring for Every Need

Hendrickson offers a wide range of leaf springs from monoleaf to multi-leaf springs to customised solutions. We design springs for light- through heavy-duty commercial vehicles, with spring thicknesses ranging up to 63mm and a maximum length of 2400mm. Hendrickson manufactures springs weighing from 7 to 400kg. Our weight-saving solutions can save up to 100kg per truckload; we understand every kilogramme counts in the transportation industry. Whatever the end user requires – reliability, durability, weight reduction or innovative designs – Hendrickson is the world's spring provider for your transportation needs.

### 8t Monoleaf



### Heavy-Duty Parabolic Leaf Spring



### Heavy-Duty Multileaf



### V-Shaped 3D Airlinks



### 3D Airlinks



### Superlight Monoleaf



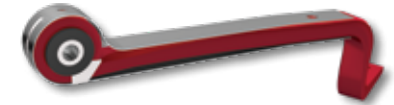
### V-Shaped Bogie Parabolic



### V-Shaped Bogie Parabolic



### Multi-Kicked Monoleaf Airlink



### Monoleaf Airlinks



### Bogie Parabolic Spring



## SNAKE SPRING

Hendrickson's innovative Snake spring technology is based on the combination of horizontal and vertical axis inputs built into a single leaf Snake spring system.

This design offers substantial advantages.

- High comfort at low load and high stability at high loads by using a single leaf design
- Weight reduction up to 20% on system level compared to multi leaf systems
- Less and lighter parts serving the same function than standard systems



# COMPOSITES



## Composite Springs for Light Weight Solutions

Our innovative products are currently produced for major North American and European OEMs as well as multiple automotive and large truck and trailer applications in Asia. Composite advantages are simple – less weight, increased durability, improved ride and enhanced performance. *It's a clear choice!*

### Automotive

Hendrickson composite springs for the passenger and light truck segments enjoy many unique benefits over steel suspension systems. Among them are weight reduction for improved range, improved ride and comfort versus steel springs and corrosion and sag resistance. Our springs offer manufacturers better packaging with systems that require less space. This allows for lower hood lines, elimination of coil towers and oftentimes lower drag coefficients. It can also provide for larger interior space and/or the addition of more passenger amenities without adding to the overall vehicle weight.





# STABILISERS / U-BOLTS



## Refining Vehicle Stability, Handling and Comfort

More than 30 years of expertise in stabiliser design allows Hendrickson to further enhance commercial vehicle stability, handling and comfort. Stabilisers play a key role in truck and bus suspension designs and are becoming increasingly important in weight-critical applications for the next generation of trucks.

## Stabiliser Design and Testing

Each customised component is designed, prototyped and tested by our engineers to meet both vehicle manufacturer requirements and Hendrickson stringent criteria. Each stabiliser design is tested in our lab and in real-world conditions, providing the end user with innovative and cost-effective solutions. These proprietary competencies enable us to continuously improve our manufacturing quality and production processes for all our components and suspension systems.

## Lighter and Value Added

Hendrickson tube stabilisers are up to 45 percent lighter than solid stabilisers and enable significant reduction in both unsprung and total weight savings. Our stabilisers help the end user meet today's fuel consumption challenge and the expectations of higher payloads.

Our expertise lies in medium- to large-diameter stabilisers. Hendrickson delivers state-of-the-art tube stabilisers with diameters up to 65mm and a wall thickness of 10mm. In addition, our advanced two-stage coating line ensures anti-corrosion surface protection, resulting in superior durability and added value for the end users.

**Whatever your spring or stabiliser requirements are, Hendrickson holds the solution for your transportation needs. Hendrickson has over 100 years of experience in the global heavy-duty commercial vehicle industry, that's why . . . *The World Rides On Us*<sup>®</sup>.**

## Bus Welded Stabiliser



## Heavy-Duty Welded Stabiliser



## Tube Stabiliser



## IFS Stabiliser Bar



## Solid Rear Stabiliser



## U-BOLTS & FASTENERS

*Europe's leader in the production of U-bolts*

Hendrickson produces suspension U-bolts, wheel studs and threaded bolts using advanced technologies, especially in the key manufacturing processes of thread rolling, heat treatment, bending and GEOMET anti-corrosion protection. Our design and quality standards meet or exceed the strict OEM customer requirements. Our dedicated, highly-qualified employees and the most advanced technologies ensure these standards are met. We are continuously advancing our manufacturing technologies to increase the quality we provide and to expand our selection of U-bolts. Decades of experience and technical expertise enable us to design, test and produce tough and durable component solutions.



# TORQUE RODS / TORQUE ROD BUSHINGS

Through unrelenting pursuit of innovation and quality for the past century, Hendrickson remains a pioneer in the commercial vehicle industry. Our leadership in the advancement of suspension and component technology has been further enhanced as a result of more than sixty years of elastomer development and over twenty years of elastomer manufacturing experience. These accomplishments allow us to fully integrate systems, modules and components that meet commercial vehicle demands for durability, weight savings and low life cycle costs.

## TRAAX ROD™ – Family of Torque Rods

- **Extended Life**  
Advanced bushings and flat rod body construction work together to provide up to 5 times\* longer life than competitive torque rods and conventional double shot bushing assemblies.
- **Flexibility**  
Available with straddle or taper pin bushing design.
- **Broad Application**  
Bushing and rod bodies specifically designed for each capacity and application criteria.
- **Weight Efficiency with High Strength**  
No castings needed. Manufactured using high-strength materials utilising Hendrickson's expertise in robotically-welded fabrications.
- **Packaging**  
Available in a variety of lengths and hub sizes.
- **Durability**  
Rod body and bushing designs meet rigorous testing parameters required for all Hendrickson products.

\* Based on internal testing of bushing walkout, retention and durability. Actual product performance may vary depending on component and vehicle configuration, operation, service and other factors.

## TRAAX ROD™ Torque Rod Bushings

Offering a wide variety of bushing designs to meet global application or attachment requirements. From light-duty on-highway to demanding vocational applications, our designs are tailored solutions to deliver extended performance and restrict walk out. Whatever the application requires – reliability, outstanding durability, articulation, innovative designs – we are pushing the boundaries of torque rod performance for your transport needs.



## Additional Torque Rod offerings

### ULTRA ROD® and ULTRA ROD® PLUS Torque Rods

Forged or cast rod body construction with unique bonded bushings. Both forged and cast rod bodies provide structural integrity, while the unique bonded bushing reduces the friction and heat that can damage ordinary bushings – providing longer life and greater payload.





# ELASTOMERS



**Hendrickson's unique elastomer design capabilities result in higher performing, more durable maintenance-free components.**

## Why use rubber in heavy truck suspensions?

- Reduce overall suspension weight
- Lower component costs
- Increase durability in harsh operating environments
- Ease of service and replacement
- Reduce maintenance – requires no lubrication
- Provides isolation and damping through energy absorption
- Add system compliance for greater articulation and mobility

## Spring Eye Bushings

Spring eye bushings are designed as a system providing enhanced spring performance in the areas of roll stability, ride and durability.



**Thru Bolt**



**Rate Ring Cartridge**



**Bar Pin**



## Rubber Springs

Our advanced components have redefined the way rubber spring suspensions perform. The innovative, high grade rubber designs withstand heavy loads in rugged applications.



**Shear Spring (ULTIMAAX®)**



**Progressive Spring (ULTIMAAX® 40T)**



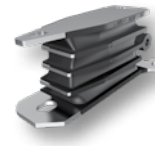
**Progressive Spring (ULTIMAAX® 32T)**



**Progressive Spring (ULTIMAAX® 460/600)**



**Progressive Spring (HUV®)**



**Bolster Spring (HAULMAAX® EX)**



**Progressive Spring (HAULMAAX® EX)**



## Beam Bushings

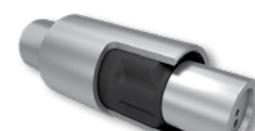
Premium rubber beam end bushings provide enhanced flexibility between the beam and the axle to absorb braking and accelerating forces and provide designed articulation / compliance to help ensure high-mobility demands. Equalising beam center bushings are designed for specific types of Hendrickson walking beam suspension capacities and configurations to maximise system performance.



**Rate Ring End Bushing**



**Spherical End Bushing**



**Voided Center Bushing**





## Europe

### Hendrickson Commercial Vehicle Systems Europe

Hendrickson Austria GmbH  
Gussstahlwerkstraße 21  
8750 Judenburg, Austria  
+43 3572 44011 400

Hendrickson Germany GmbH  
Hans-Böckler-Str. 3  
47877 Willich, Germany

Hendrickson Romania S.R.L.  
Str. Forjorilor, Nr. 22  
550233 Sibiu, Romania

Hendrickson France S.A.S.  
Avenue des Forges  
90700 Chateinois-les-Forges, France

Hendrickson France S.A.S.  
201 rue de Sin Le Noble  
59503 Douai Cedex, France

Hendrickson Poland Sp. z o.o.  
ul. Na Zapleczu 25  
87-100 Toruń, Poland

### Hendrickson Commercial Vehicle Systems UK

1-9 Booth Drive  
Park Farm Industrial Estate  
Wellingborough, NN8 6GR, England

Hendrickson Turkey  
Sirketi Türkiye Subesi  
10016 Sokak, No: 8  
A.O.S.B. Cigli, 35620  
Izmir, Turkey

## Asia Pacific

### Hendrickson Commercial Vehicle Systems Oceania

Hendrickson Australia  
32-44 Letcon Drive  
Dandenong South, Victoria, 3175, Australia  
+61 3 8792 3600

Hendrickson New Zealand  
Unit P, 24 Allright Place  
Mt Wellington, Auckland, 1006  
+64 9 570 4721

Watson & Chalin Korea  
4ma 502-1ho, Sihwa Industrial Complex,  
Seonggok-dong, Danwon-gu,  
Ansan-si, Korea, 425-836  
+82 31 434 1730

### Hendrickson Commercial Vehicle Systems China

No. 1668  
North Section of Chunbo Road,  
East New Dist of Jinan High-Tech  
Industrial Development Zone,  
Jinan City, Shandong Province, China, 250104  
+86 531 8880 9055

### Hendrickson Commercial Vehicle Systems India

Plot No. 4 & 5, Gat. No. 679/2  
Behind Hotel Gandharva  
Alandi Kuruli Road, Kuruli (Chakan)  
Taluka Khed, Pune 410501, India  
+91 2135 662600

### TATA AutoComp Hendrickson

Gate 431,1 Medankarwadi  
Chackan - Alandi Road  
Taluka Khed, Pune 410 501, India  
+91 2135 670600

### Sales and Distribution

Hendrickson Japan +81 90 6464 3069  
Hendrickson South Africa +61 455 600 646  
Hendrickson Thailand +66 81 341 6765

## North & South America

### Hendrickson Truck Commercial Vehicle Systems

800 South Frontage Road  
Woodridge, Illinois 60517-4904 USA  
630.910.2800  
Fax 630.910.2899

655 Hendrickson Drive  
Lebanon, KY 40033-9178 USA

101 South Progress Drive West  
Kendallville, IN 46755-3262 USA

532 Romeo Street South  
Stratford, Ontario  
Canada N5A 4V4

Ave. Rassini #801  
Colonia Nicolas Bravo  
C.P. 26030

Piedras Negras, Coahuila Mexico

### Hendrickson Trailer Commercial Vehicle Systems

2070 Industrial Place SE  
Canton, Ohio 44707-2641 USA  
330.456.7288 • 866.RIDEAIR (743.3247)  
Fax 330.456.0105

5701 Airport Road  
Mitchell, SD 57301-6273 USA

180 Mount Zion Road  
Lebanon, IN 46052-8186 USA

151 International Boulevard  
Clarksville, TN 37040-5304 USA

565 Pin Oak Drive  
Somerset, KY 42503-7501 USA

940 North Black Branch Road  
Elizabethtown, KY 42701-9800 USA

4770 Navarre Road SW  
Canton, OH 44706-2339 USA

### Hendrickson Canada

250 Chrysler Drive, Unit#3  
Brampton, Ontario  
Canada L6S 6B6  
905.789.1030 • 800.668.5360  
Fax 905.789.1033

### Hendrickson Mexicana

Circuito El Marqués Sur #29  
Parque Industrial El Marqués  
Pob. El Colorado, Municipio El Marqués,  
Querétaro, México C.P. 76246  
+52 (442) 296 3600  
Fax: +52 (442) 296 3601

### Hendrickson Specialty Products

#### Hendrickson Auxiliary Axle Systems

277 North High Street  
Hebron, Ohio 43025-8008 USA  
740.929.5600 • 800.660.2829  
Fax 740.929.5601

#### Hendrickson Bumper and Trim

501 Caton Farm Road  
Crest Hill, Illinois 60403 USA  
815.727.4031  
Fax 815.727.9697

#### Watson & Chalin

725 E. University Dr.  
McKinney, Texas 75069-2325 USA  
972.547.6020 • 800.445.0736

### Sales and Distribution

Hendrickson Latin America  
U.S. +1 305.677.9070  
Colombia +57 318 366 1369





*for* **ENGINEERED**  
**EFFICIENCY**™



**Hendrickson is a leading global manufacturer and supplier of medium- and heavy-duty mechanical, elastomeric and air suspensions; Hendrickson is a leading global manufacturer and supplier of medium- and heavy-duty mechanical, elastomeric and air suspensions; integrated and non-integrated axle and brake systems; tyre pressure control systems; auxiliary lift axle systems; parabolic and multi-leaf springs; stabilisers; bumpers; and components to the global commercial transportation industry.**



**Hendrickson Commercial Vehicle Systems Europe GmbH**

**Gussstahlwerkstraße 21**

**8750 Judenburg, Austria**

**+43 664 889 88 763**

**office-europe@hendrickson-intl.com**

**[www.eu.hendrickson-intl.com](http://www.eu.hendrickson-intl.com)**

Weights and rated capacities in this publication are listed in metric tons (t).

Actual product performance may vary depending upon vehicle configuration, operation, service and other factors.

All applications must comply with applicable Hendrickson specifications and must be approved by the respective vehicle manufacturer with the vehicle in its original, as-built configuration.

Contact Hendrickson for additional details regarding specifications, applications, capacities, operation, service and maintenance instructions.

Information contained in this literature was accurate at the time of publication.

Product changes may have been made after copyright date that are not reflected.

All trademarks shown are owned by Hendrickson USA, L.L.C., or one of its affiliates, in one or more countries.